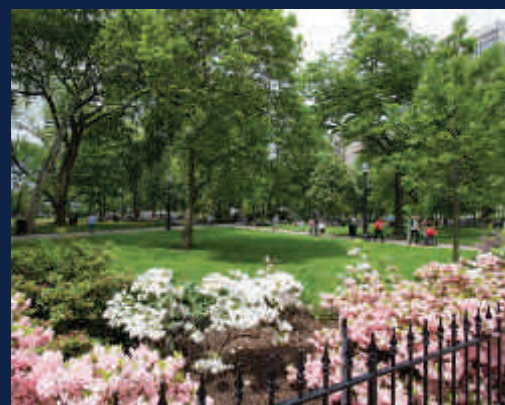


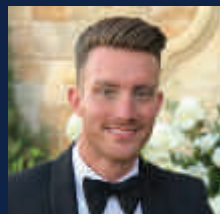
Where modern luxury meets historic elegance.
Discover what it's like to LIVE here.
Live Historic. Live Bold. Live Philadelphia.



Kurfiss 
Sotheby's
INTERNATIONAL REALTY

JASON KRAVITZ

Top Real Estate Agent at Kurfiss Sotheby's Philadelphia
c. 267.324.4141 | o.215.735.2225
www.RealtorJK.com | RealtorJK@Gmail.com
1631 Locust Street Suite 300, Philadelphia, PA 19103
Each office is independently owned & operated



JUNE 2018
THE COMPLETE GUIDE TO GO®

Philadelphia where

wheretraveler.com

Welcome Summer

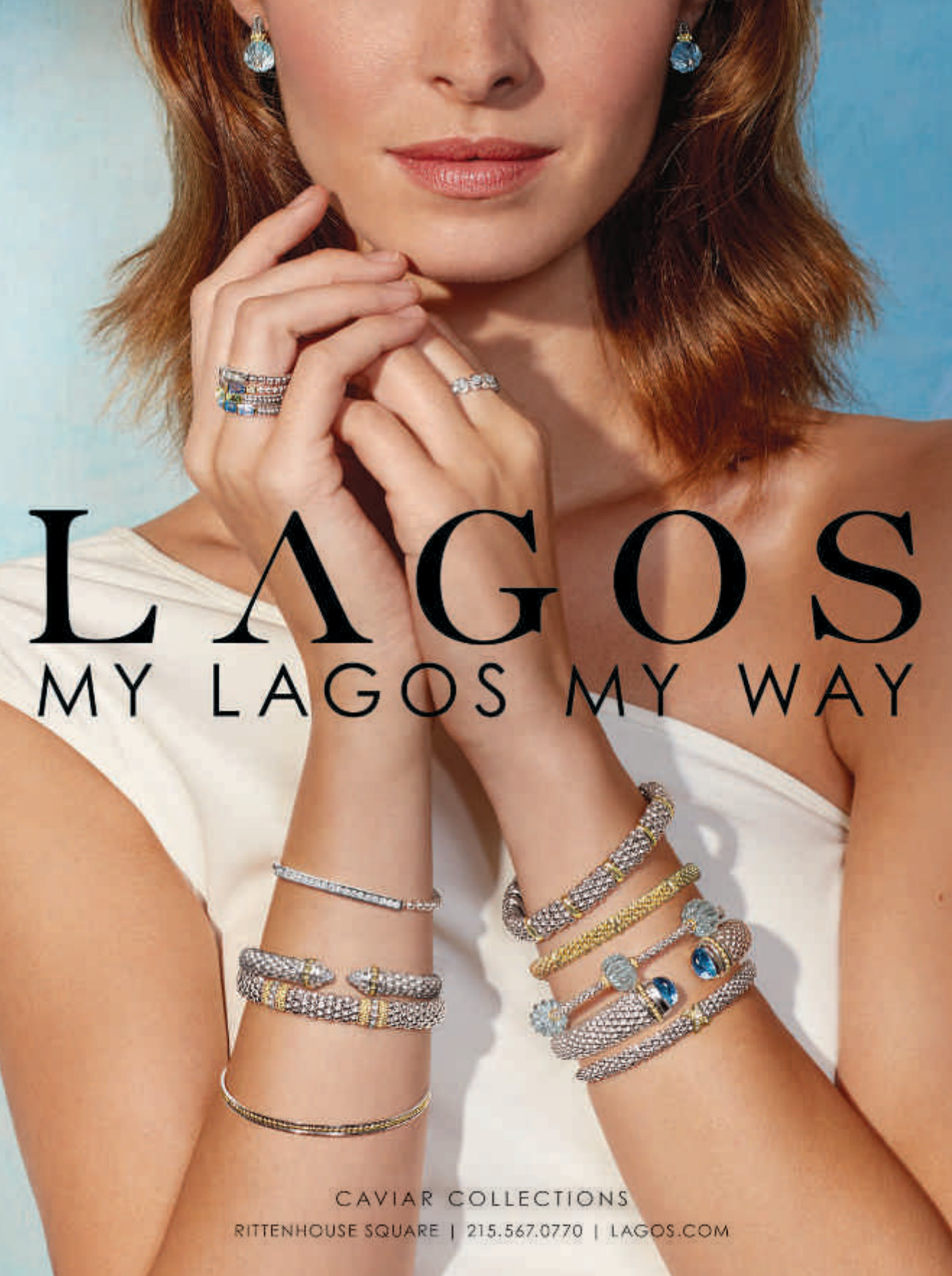
INSIDE

AN ARTS
SHOW-STOPPER
RETURNS
.....

RAISE A
GLASS TO
BEER WEEK



Celebrate
Flag Fest at the
Betsy Ross House
June 10-16
PROMOTION



LAGOS

MY LAGOS MY WAY

CAVIAR COLLECTIONS

RITTENHOUSE SQUARE | 215.567.0770 | LAGOS.COM

CONTENTS

SEE MORE OF PHILADELPHIA AT WHERETRAVELER.COM

the plan

02 Editor's Itinerary

The essential things to see and do in Philadelphia, plus a 90-minute visit to a family-friendly riverside attraction.

04 Where Calendar Hot Dates This Month

Top things to do in June.



40 Philadelphia Your Way

Our picks for seeing the city with the guys, Zen seekers, the LGBTQ crowd—or all three.



ON THE COVER

The birthplace of the American flag brings the sights and sounds of the 18th century back to life. ©J. FUSCO

CONNECT WITH US



READ US ON MAGZTR

the guide

12 SHOPPING

Top spots to shop, from department stores to independent boutiques

18 GALLERIES & ANTIQUES

Paintings, photography, sculptures, antiques, plus exhibitions to see now

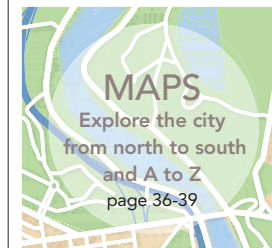
21 DINING

Tasty Philly restaurants, from fine dining to fast casual, in more than a dozen neighborhoods



28 ENTERTAINMENT

Fun bars, hip lounges, world-class theater and many more ways to enjoy the arts



10

Yards Brewing Company



8

Philadelphia International Festival of the Arts "Doggie Hamlet"

where now

8 Show Stoppers

The Philadelphia International Festival of the Arts returns with its signature jaw-dropping acts. Don't know what to see? Check out our guide to the top shows. **BY AMY GORDON**

10 Cheers to Beer

June in Philadelphia means Philly Beer Week. Raise a glass to the city's craft suds at spots all around town, from friendly local watering holes to roaming beer gardens.

(CLOCKWISE FROM LEFT) ©J. FUSCO/VISIT PHILADELPHIA; ©R. KENNEDY/VISIT PHILADELPHIA; COURTESY DOUBLE KNOT; ©KELLY FLETCHER

NEWS TO TRAVEL BY

Essential Philadelphia



School's out, so naturally, our thoughts turn to summer-time diversions. Luckily, we don't have to go far to enjoy all that the season has to offer. The Philadelphia International Festival of the Arts returns with tons of jaw-dropping acts like a 24-hour, nonstop show. Not sure what to see? Refer to our top picks on page 8. June also highlights Philly Beer Week, a popular time in this brew-loving town. We show you how to make the most of it on page 10. Tight on time? Here's a quick guide to one of the city's most popular family-friendly riverside attractions.

90 MINUTES IN: Independence Seaport Museum

This site founded by J. Welles Henderson has been offering an insightful look at the region's waterways since 1960, when it was known as the Philadelphia Maritime Museum. In 1995, the museum took its current name and moved to its current location at Penn's Landing on the Delaware Waterfront.

Start inside at the exhibition "Patriots and Pirates," which tells the story of the U.S. Navy (and its encounters with buccaneers). From here, check out key artifacts, like the bridge from the U.S.S. Lawrence, which was built in Camden, New Jersey, just across the river. For something a little more hands-on, climb aboard Diligence, a 102-foot full-size model of the 1797 original schooner, and glimpse 18th-century life at sea.

Outside, you'll find the Cruiser Olympia and Submarine Becuna (pictured), National Historic Landmark



ships that have been berthed at the museum since 1996.

Launched in 1892, the Cruiser Olympia is the oldest surviving American naval warship from its era and the oldest floating steel warship. It served as Commodore Dewey's flagship when he won the Battle of Manila Bay in the Spanish-American War.

In her heyday, the Subma-

rine Becuna (aka "Becky"), a WWII and Cold War-era submersible, patrolled the Pacific and Atlantic oceans, sinking 3.5 Japanese merchant ships and "eavesdropping" on Soviet submarines.

Correction: The Family Fun Guide incorrectly lists information for the museum. Admission prices are \$17; seniors/students/military \$12; children under 3 free. Historic ships are open Th-Sa, 10 am-8 pm through Labor Day.

W Get going! Explore the city at wheretraveler.com.

where® in the world

Where is an international network of magazines first published in 1936 and distributed in over 4,000 leading hotels in more than 50 places around the world. Look for us when you visit any of the following cities, or plan ahead for your next trip by visiting us online at wheretraveler.com.

UNITED STATES Alaska, Atlanta, Baltimore, Boston, Charleston, Charlotte, Chicago, Dallas, Indianapolis, Jacksonville/St. Augustine/Amelia Island, Las Vegas, Los Angeles, Maui, Miami, Minneapolis/St. Paul, New Orleans, New York, Oahu, Orange County (CA), Orlando, Philadelphia, Phoenix/Scottsdale, San Diego, San Francisco, Seattle, St. Louis, Tampa, Tucson, Washington, D.C. **ASIA** Hong Kong, Macau, Singapore **AUSTRALIA** Brisbane, Gold Coast, Melbourne, Sydney **CANADA** Calgary, Canadian Rockies, Edmonton, Halifax, Muskoka/Parry Sound, Ottawa, Toronto, Vancouver, Victoria, Whistler, Winnipeg **EUROPE** Berlin, Budapest, Istanbul, London, Madrid, Milan, Moscow, Paris, Rome, St. Petersburg

Where Tradition Meets Invention

Authentic Indian Cuisine,
Craft Cocktails &
Contemporary Atmosphere

Lunch: 11:30 AM - 2:30 PM
Dinner: 5:00 PM - 10:00 PM

Happy Hour

Mon - Fri: 5:00 PM - 7:00 PM
Sat - Sun: 6:00 PM - 8:00 PM

1920 Chestnut St.
Philadelphia, PA 19103
267-519-2001

www.vedaphilly.com

Veda

(FROM TOP) ©ANNE KIM-DANNIBALE; ©M. FISCHETT/ISTITUT PHILADELPHIA®

YOUR TRAVELING COMPANION SINCE 1936®

where®
PHILADELPHIA

Member of the Morris Media Network

EDITOR **Anne Kim-Dannibale**
EDITORIAL ASSISTANT **Alexander Oliveira**

ADVERTISING & CIRCULATION
ASSOCIATE PUBLISHER **Brenda Mendte**
CIRCULATION AND COMMUNICATIONS MANAGER
Zach Santo

EDITORIAL & DESIGN
ART DIRECTOR **Dusty Martin**
MORRIS VISITOR PUBLICATIONS

MVP | EXECUTIVE
PRESIDENT **Donna W. Kessler**
CHIEF FINANCIAL OFFICER **Dennis Kelly**
VICE PRESIDENT, OPERATIONS **Angela E. Allen**
HEAD OF DIGITAL **Richard H. Brashear II**
DIRECTOR OF CIRCULATION **Scott Ferguson**

MVP | CREATIVE
CHIEF CREATIVE OFFICER **Haines Wilkerson**
EDITORIAL DIRECTOR **Margaret Martin**
DIRECTOR OF PHOTOGRAPHY **Isaac Arjonilla**
CREATIVE COORDINATOR **Beverly Mandelblatt**

MVP | PUBLICATION SERVICES
PUBLICATION SERVICES DIRECTOR **Karen Fralick**
PUBLICATION SERVICES MANAGER **Cher Wheeler**
DIGITAL IMAGING **Erik Lewis**

MVP | MANUFACTURING & TECHNOLOGY
DIRECTOR OF MANUFACTURING **Donald Horton**

E-mails for all of the above except contributors:
firstname.lastname@morris.com

MVP

Morris Visitor Publications

MVP | PHILADELPHIA
1455 Pennsylvania Ave. NW, Suite 457,
Washington, DC 20004, 202.349.9858

MORRIS COMMUNICATIONS
CHAIRMAN **William S. Morris III**
PRESIDENT & CEO **William S. Morris IV**

wheretraveler.com

Where® magazine is produced by Morris Visitor Publications (MVP), a division of Morris Communications Co., LLC, 725 Broad St., Augusta, GA 30901, morrismedianetwork.com. Where magazine and the where® logo are registered trademarks of Morris Visitor Publications. Where makes every effort to ensure the accuracy of the information it publishes, but cannot be held responsible for any consequences arising from errors or omissions. All rights reserved. Reproduction in whole or in part strictly prohibited.



FISHTOWN HOPS

WELCOME TO PHILLY'S BEER GARDEN

Fishtown Hops is an experience complete with a delicious food menu, craft beers, cocktails, games, live entertainment and more.

Join us for happy hour, a bite to eat with a view or a fun night out catching up with friends.

Located on the river at SugarHouse Casino, where parking is always free.

POWERED BY SUGAR HOUSE CASINO

FISHTOWNHOPS.COM

FREE SELF-PARKING ON N. DELAWARE AVE. 1 MILE NORTH OF THE BEN FRANKLIN BRIDGE.

Persons under 21 are not permitted inside the casino.

GAMBLING PROBLEM? CALL 1-800-GAMBLER.



HOT DATES

ALL MONTH: Spruce Street Harbor Park

As the weather warms up, locals flock to the banks of the Delaware River, where summer kicks into high gear. All season long, the area channels a seaside carnival, complete with a lively boardwalk with games like shuffleboard and bocce, and the Oasis with floating gardens. After getting your fill of all the action, snag a comfy hammock and watch the lights on the trees change colors and sparkle when the sun dips down. *Free admission. Daily. Delaware River Waterfront, 301 S. Christopher Columbus Blvd. at Spruce Street, 215.922.2386, www.delawareriverwaterfront.com*



6 Great Things Not to Be Missed

1 BALLETX POP-UP > JUNE 3

The modern troupe dances among art. Free. 1 pm. Brandywine River Museum, 1 Hoffman Mill's Road, Chadds Ford, Pa., 610.388.2700, balletx.org

2 PRIDE DAY > JUNE 10

Margaret Cho headlines this year's festival. Parade free; festival \$15. 11:30 am. 13th and Locust sts., 215.875.9288, phillygaypride.org

3 AN INCONCEIVABLE EVENING WITH CARY ELWES > JUNE 15

The actor tells all about the making of "The Princess Bride." \$34-\$129. 8 pm. Merriam Theater, 250 S. Broad St., 215.893.1999, kimmelcenter.com

4 BLOOMSDAY > JUNE 16

Toast James Joyce with a daylong reading of "Ulysses" featuring local celebs, plus music and food. Free. 11 am-8 pm. The Rosenbach, 2008-2010 Delancey Place, 215.732.1600, rosenbach.org

5 NIGHT MARKET > JUNE 21

Food trucks and local mom-and-pops tempt at this popular street food fest. Free admission. 7-11 pm. 13th and Locust sts., thefoodtrust.org/night-market

6 MANAYUNK ARTS FESTIVAL > JUNE 23-24

Hundreds of national and international artists bring their works to picturesque Manayunk. Free admission. 7-11 pm. 13th and Locust sts., thefoodtrust.org/night-market

TOP SPOTS

The summer music season heats up with top acts, from rock stars to rappers.

JUNE 2

ROOTS PICNIC

Comedian Dave Chapelle presides over acts like 2 Chainz, The Diplomats and DJ Kid Capri. From \$56. See website for times. Festival Pier, Columbus Blvd. and Spring Garden St., 800.745.3000, rootspicnic.com/philly

JUNE 8

KENDRICK LAMAR

The Pulitzer Prize-winning musician joins SZA and Schoolboy Q for a night of head-bobbing hip-hop. From \$45. 7:30 pm. BB&T Pavilion, 1 Harbour Blvd., Camden, N.J., 856.365.1300, bbt pavilion.org

JUNE 11

DEF LEPPARD WITH JOURNEY

Rock and power ballads hit high notes at this joint show by two '80s big-hitters. From \$49.50. 7 pm. Wells Fargo Center, 3601 S. Broad St., 215.336.3600, wells fargocenterphilly.com

JUNE 13-14

U2

Bono and crew bring high-tech magic to their Experience & Innocence tour. From \$41. 8 pm. Wells Fargo Center, 3601 S. Broad St., 215.336.3600, wells fargo centerphilly.com

JUNE 22

RAY LAMONTAGNE

The Grammy-winning singer/songwriter brings his vintage sound to Penn's Landing. From \$20. 7:30 pm. Festival Pier, Columbus Blvd. and Spring Garden St., 800.745.3000, festival pierphilly.com

(FROM TOP) © M. FISCHETT/IVISIT PHILADELPHIA; COURTESY THE KIMMEL CENTER; © J. FUSCO/IVISIT PHILADELPHIA

W For a full calendar of events, go to wheretraveler.com/philadelphia/local-events

EASTERN STATE PENITENTIARY

Save \$2
Use code WHERE18 at
www.EasternState.org

Explore America's Most Historic Prison

A haunting world of crumbling cellblocks and empty guard towers

Tours include the cellblocks, Al Capone's Cell, artist installations, and an audio tour narrated by actor Steve Buscemi.

Open Every Day 10 am to 5 pm • (215) 236-3300 • www.EasternState.org
2027 Fairmount Avenue, Philadelphia, PA • Just five blocks from the Philadelphia Museum of Art



How to Eat Like a Local

PRESENTED BY PAT'S KING OF STEAKS

● No visit to Philadelphia would be complete without a visit to the birthplace of the cheese steak sandwich, Pat's King of Steaks®. Sure, there are lots of places in Philly to get a cheesesteak, but only Pat's gives you the authentic experience that locals have lined up for since 1930.

1237 E. PASSYUNK AVENUE (AT 9TH & WHARTON)
PATSKINGOFSTEAKS.COM • #ORIGINATOR

LOCATIONS: CHEESESTEAK (FRANKIE OLIVERI) SPRAYGARD PHOTOGRAPHY



ADVERTISEMENT

How to Order Like a Local

DON'T SAY DO SAY

Good afternoon, I would like the sandwich that you are most famous for, the one with steak and Cheez Whiz and onions. Can I please have one of those?

Whiz Wit

Would it be at all possible to have that without onions?

Whiz Wit-Out

I'll take a cheesesteak, without the cheese, but with onions.

Plain Wit

On second thought, no onions.

Plain Wit-Out

Hmmm...I'd like a cheesesteak with...um, hmmm...which cheese do I want?

"Provolone Wit" or "Provolone Wit-Out" or "American Wit" or "American Wit-Out" or "Pizza Wit" or "Pizza Wit-Out"

Chef and third generation Pat's owner Frankie Oliveri, as seen on Food Network, Travel Channel, Spike and more



● Want mushrooms and/or peppers? Want to try our Roast Pork, Hot Dogs or Fish Cakes? Just ask any way you want! Pay with cash, grab your sandwich, then step to the other window for fries and drinks. Got it? Great! You're now an honorary local. See you at Pat's!

Philadelphia where now

The savvy traveler's guide to the City of Brotherly Love



Philadelphia

For more information
wheretraveler.com



CENTER STAGE

**Show
Stoppers**
The Philadelphia
International Festival of
the Arts returns with its
signature high-flying acts.

BY AMY GORDON



Taylor Mac: A 24-Decade
History of Popular Music

Wild & Wonderful

The Philadelphia International Festival of the Arts (PIFA) presents works so unique and over the top that the festival happens only once every two years. This year doesn't disappoint. Through June 10, The Kimmel Center production showcases more than 50 events that defy characterization. Don't miss these top picks.

TAYLOR MAC: A 24-DECADE HISTORY OF POPULAR MUSIC

The MacArthur "genius grant" recipient explores 240 years of history in a 24-hour, decade-by-decade tour de force performance with more than 200 local performers, ranging from a marching band to burlesque dancers. The audience even gets era-specific foods, courtesy of Garces Catering.

CRISTAL PALACE

PIFA brings spectacles audiences won't see anywhere else, like this act set in Fairmount Park. This year, the high-flying event brings back Transe Express, the renowned street artist troupe that dazzled onlookers during PIFA 2011 by playing music and performing feats while suspended in the air. This time, the awe-inspiring aerialists create a human chandelier towering high above the crowd (opposite). Meanwhile, back on solid ground, the crowd is encouraged to dance and move around the immersive installation.

THE PLANETS

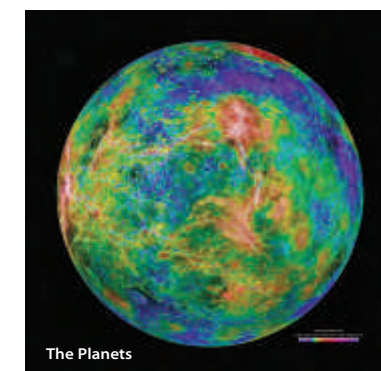
In this multi-sensory, mind-expanding experience, the Jazz Orchestra of Philadelphia performs a world-premiere arrangement (with the help of a 19-year-old local musician) of Gustav Holst's "The Planets." The music is accompanied by a mesmerizing film from NASA and Jet Propulsion Laboratories presenting unforgettable footage of our solar system, planet by planet, as seen from space.

DOGGIE HAMLET

Thirty sheep, five dancers and a trio of dogs compose the cast of this thought-provoking performance, set outdoors at the Belmont Plateau in Fairmount Park, where the audience sits on bales of hay. Through dance, music, living props and visual elements, the production examines the relationship between the city of Philadelphia and the surrounding agricultural land that supports it. The hour-long piece has three performances throughout PIFA.

PIFA STREET FAIR

A hallmark of the arts festival, the free block party once again spills out across Broad Street from City Hall to South Street, with carnival-style rides, some of Philly's favorite food vendors, and loads of fun taking full advantage of longer daytime hours this time of year.



The Planets

(FROM TOP) ©TEDDY WOLFF; COURTESY THE KIMMEL CENTER; (OPPOSITE) ©COURTESY TRANSE EXPRESS

SIP + SAVOR

Cheers to the City's Beer Scene



Monk's Cafe

PHILLY BEER WEEK

In a city where founding fathers gathered in local pubs some 300 years ago after a long day of hashing out the birth of this nation, it's no wonder that Philadelphia is home to one of the largest and most diverse beer cultures around. From June 1 to 10, Philly becomes the ultimate place to raise a pint thanks to **Philly Beer Week**. During this annual suds-soaked celebration, hundreds of events—including meet-the-brewer nights, themed tours and even beer dinners—draw the world's top brewers and tipplers. Philly Beer Week is the biggest beer festival of its kind, showcasing the talent of local breweries like Yards, Victory, Dock Street, Free Will Brewing Company and so many more. Not in town for the festivities? No need to fret. Every neighborhood in this brew-loving town is home to remarkable beer halls, ensuring there's always somewhere welcoming to stop in for lip-smacking suds, local color and plenty of that Philly Brotherly Love. See right for a few of our favorite watering holes. *See all beer week events at phillylovesbeer.org*

Hop to It

With passionate drinkers, dedicated bar owners, smart importers and upstart breweries, Philly is one of the best beer cities in the country. Here, a few top places to quench your thirst.

• **FRANKFORD HALL** Stephen Starr recalls a traditional German "biergarten" but with a modern spin. Counter service, long communal tables and alfresco ping-pong create a lively atmosphere, with huge steins of traditional German and craft beers. Fill up on casual fare like schnitzel and bratwurst. 1210 Frankford Ave., 215.634.3338, frankfordhall.com



Independence Beer Garden

• **INDEPENDENCE BEER GARDEN** This sprawling outdoor space overlooks the Liberty Bell Center and Independence National Historical Park. Two bars pour local and domestic craft brews with a menu offering snacks and plates, from seasoned popcorn to mahi-mahi tacos and fried chicken. 100 S. Independence Mall West, 215.922.7100, philbeergarden.com

The two come together perfectly here. With a beer list that reads like a phone book, there's something here for everyone at this casual, centrally located local favorite. 263 S. 15th St., 215.545.4101, josepistolas.com

• **MONK'S CAFE** It's worth the wait for a seat at this Center City hotspot; the beer selection is one of the best in America. Order a pot of mussels and a beer you've never heard of—you won't be disappointed. 264 S. 16th St., 215.545.7005, monkscafe.com



Standard Tap

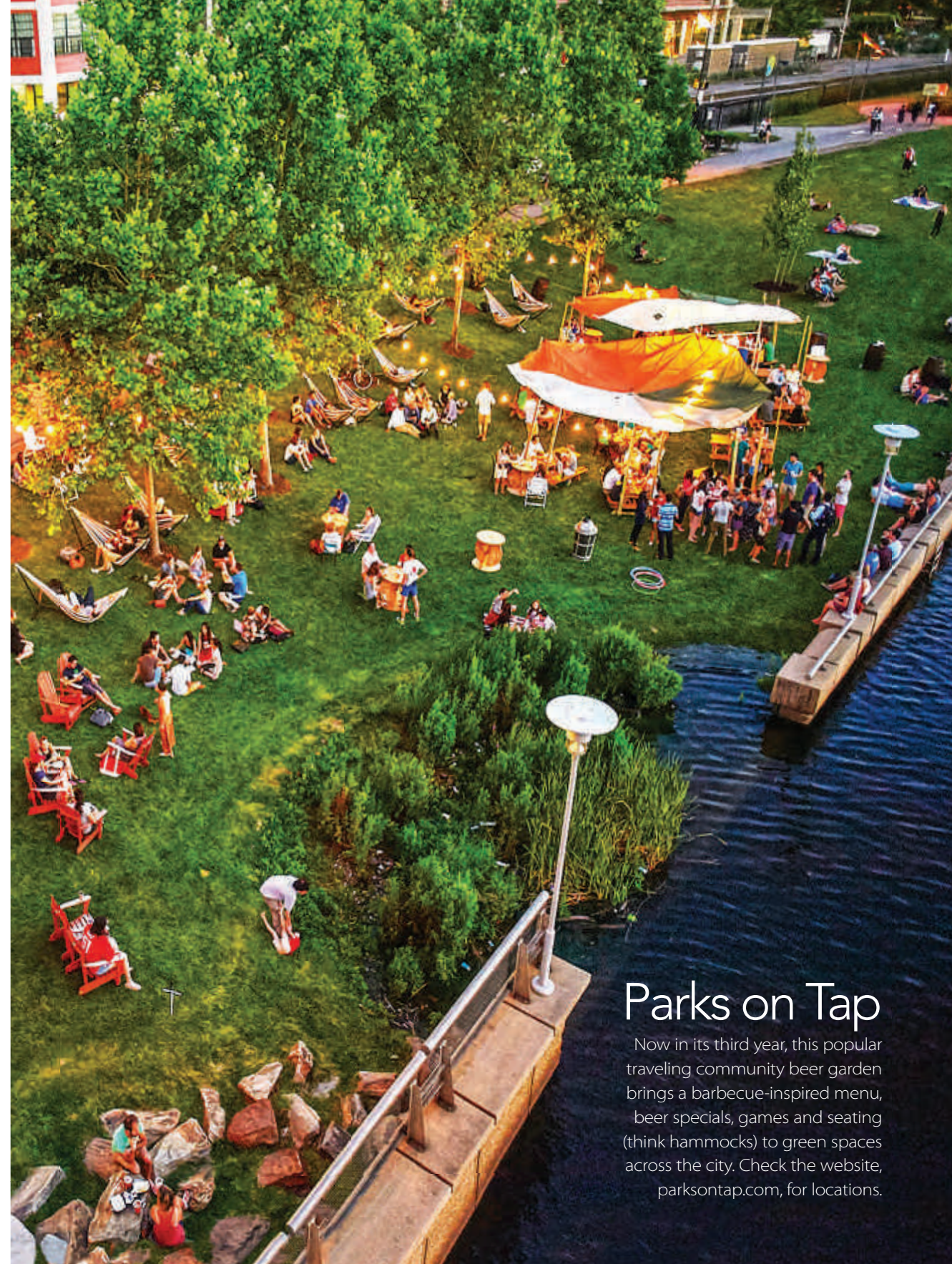
• **JOSE PISTOLA'S** Few things are more comforting than great beer and well-made Mexican food.

• **STANDARD TAP** From the all-local beer list featuring standout breweries like Stoudt's and Tröegs, to its scrumptious menu (duck confit salad), this Northern Liberties joint offers a quintessential Philly gastropub experience. 901 N. Second St., 215.238.0630, standardtap.com



Frankford Hall

(CLOCKWISE FROM LEFT) ©J. SMITH/VISIT PHILADELPHIA®; ©M. FISCHETTI/VISIT PHILADELPHIA® (2); ©G. WIDMAN/VISIT PHILADELPHIA™; (OPPOSITE) ©ALBERT YEE

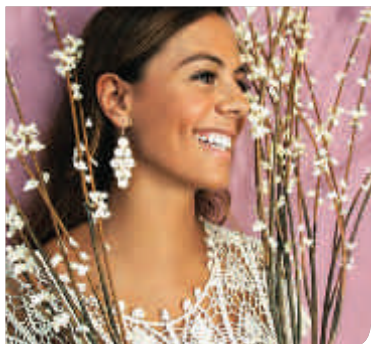


Parks on Tap

Now in its third year, this popular traveling community beer garden brings a barbecue-inspired menu, beer specials, games and seating (think hammocks) to green spaces across the city. Check the website, parksontap.com, for locations.

the where guide

Shopping | June



Lou Lou Boutique

Located in Midtown Village, this small popular chain offers an affordable selection of on-trend jewelry, hats, sunglasses and other accessories in a boutique setting. And since prices are affordable, splurging here won't break the bank. www.loulouboutiques.com. 143 S. 13th St., 267.538.1267. **Map 1, I5**



Dudes Boutique

Despite its name, this Center City shop carries clothing and accessories for both men and women. The store specializes in pieces made with exotic skins, but also stocks items made with fabric, plus edgy and out-of-the-box shoes, belt buckles and even watches. www.dudesboutiqueonline.com. 646 South St., 215.928.0661. **Map 1, J7**



Lush Cosmetics and Spa

Yes, this popular international cosmetics store is well known for its balms and body butters handmade with natural ingredients. But this location also has one of the company's few signature spas, where shoppers indulge in uplifting therapies. www.lushusa.com. 1525 Walnut St., 215.546.5874. **Map 1, H5**

Apparel-Men

COMMONWEALTH PROPER—Expert style consultants work with individuals to create not only custom suits, but also shirts and even casual pieces designed to fit like a glove. By appt. only M-F 10 am-6 pm, Sa-Su 10 am-4 pm. www.commonwealthproper.com. 1839 Chestnut St., second floor, 267.319.1741. **Map 1, G5**

DAMARI SAVILE—Eagles safety Malcolm Jenkins and entrepreneur Jay Amin's menswear shop appeals to sharp dressers looking for a bit more detail in their outfits. Their 3,000-square-foot space offers ready-to-wear looks, but also a made-to-measure shop for custom pieces. A whiskey cellar, conference room and kitchen let gents host sartorially inclined events, too. M, Th, Su by appointment. Tu-W, F 10 am-7 pm, Sa 11 am-6 pm. www.damarisavile.com. 709 Walnut St., 267.218.5760. **Map 1, J5**

DISTANTE—Since 1983, this boutique has been offering the latest in business attire and upscale looks, plus custom outfits made in Naples, Italy. By appt. only. Call to reserve. www.distantelclothing.com. 1510 Sansom St., 215.545.2850. **Map 1, H5**

HENRY A. DAVIDSEN—This tailor and custom clothier located one block from Rittenhouse Square also offers image consulting and ready-to-wear selections, including cufflinks, pocket squares and rounds, ties and more. By appointment only. www.henrydavidsen.com. 1701 Spruce St., 215.310.0219. **Map 1, G6**

P'S & Q'S—Scope out the hand-picked, premium items at this family-owned and operated menswear shop, which carries a large inventory of casual and work-ready looks by in-demand brands including Patagonia, Norse Projects, Kikkerland and Herschel Supply Co. M-Sa noon-7 pm, Su noon-6 pm. www.psandqs.com. 820 South St., 215.592.0888. **Map 1, I7**

Apparel-Men & Women

323 ARCH STREET FASHION COLLECTIVE—This "work/shop" concept is run by designers who create items in house. Shoppers browse a collection of locally made women's clothing, accessories and jewelry, all within view of the studio. Tu-Sa noon-5 pm. www.323arch.com. 323 Arch St., 215.546.5975. **Map 2, D2**

BOYDS PHILADELPHIA—Boyd's is one of the country's largest men's stores and the city's largest designer women's store, showcasing the likes of T By Alexander Wang, Gucci Fragrance, Pashma, Manolo Blahnik and Zac Zac Posen. Amenities include free custom alterations and free valet parking. M-Sa 9:30 am-6 pm, W 9:30 am-8 pm. www.boydsphila.com. 1818 Chestnut St., 215.564.9000. **Map 1, G5**

BARBOUR—Now more than 100 years old, Barbour is a fourth-generation, family-owned company that has developed a clothing line that embodies the country life. Shop the biker-inspired Barbour International or classic Barbour Countryside collections for men and women. M-Th 10 am-7 pm, F-Sa 10 am-8 pm, Su 11 am-6 pm. www.barbour.com. 1517 Walnut St., 215.255.8420. **Map 1, H5**

CHARLIE'S JEANS—Owner Sebastian McCall's "Best of Philly 2011" (Philadelphia Magazine) shop is stocked with sought-after lines of designer denim. M-W 11 am-7 pm, Th-Sa till 8 pm, Su 11 am-6 pm. www.charliesjeans.net. 233 Market St., 215.923.9681. **Map 1, K5**

CRASH BANG BOOM—This indie shop just off of South Street features punk rock clothing and accessories for guys and gals alike. Find leather jackets, plaid pants and rock T-shirts from brands including Lip Service, Tripp NYC and Switchblade plus studded jewelry, edgy shoes and rock memorabilia. M-Tu, noon-7 pm, W-Th, noon-8 pm; F-Sa, noon-9 pm; Su, noon-6 pm. www.crashbangboomonline.com. 528 S. Fourth St., 215.928.1123. **Map 1, K7**

HATS IN THE BELFRY—This local chain offers a large selection of men's and women's dress and casual toppers from brands including Stetson, Giovannio and styles from the hat company's own line. M-Sa 10 am-7 pm, W 10 am-8 pm, Su 11 am-6 pm. www.hatsinthebelfry.com. 1824 Chestnut St., 215.922.0303. **Map 1, G5**

SUGARCUBE—Locally owned, beautifully spacious and always inviting, Sugarcube is known for inspired fashion for men and women by independent designers and vintage styles. You might find such labels as A.P.C., Dunderdon, Frenzii, Kim Schalk, Steven Alan, Pendleton and True Grit. M 11 am-7 pm, Tu-Sa noon-7 pm, Su noon-5 pm. www.sugarcube.us. 124 N. Third St., 215.238.0825. **Map 1, K4**

VINCE—This chic luxury apparel store is committed to producing everyday basics with enduring style and quality for both men and women. Shop the iconic essentials collection or the vast selection of ready-to-wear clothing and accessories. Open M-W 10 am-6 pm, Th-Sa 10 am-7 pm, Su noon-5 pm. www.vince.com. 1701 Walnut St., 215.220.4965. **Map 1, G5**

Apparel-Women

ELLELAURI—Located in the heart of the fashionable Rittenhouse Square neighborhood, this chic women's clothing brand is known for offering modern looks in elegant silhouettes and a sophisticated color palette at affordable prices. M-Sa 10 am-7 pm, Su noon-5 pm. www.ellelauri.com. 114 S. 19th St., 267.457.5939. **Map 1, G5**

THE GEISHA HOUSE—This chic Old City boutique carries a wide range of brands, among them Australian labels, including Faithful+the Brand, Knot Sisters and The Fifth Label. Whether you're looking for edgy, bohemian or feminine pieces, knowledgeable and friendly shop owner Cortney Cohen helps steer shoppers in the right direction. Su-M noon-5 pm, Tu-F 11 am-7 pm, Sa 11:30 am-7 pm. www.hellogeisha.com. 149 N. Third St., 267.886.8110. **Map 1, K4**

MOON + ARROW—Shoppers could spend hours browsing through this Queen Village boutique, stocked to the rafters with interesting finds like hand-made statement jewelry, refinished antique furniture and vintage duds—all with a focus on ethical sourcing. Look for workshops and events, and don't miss the shop's newest addition, Little Moon, a children's shop located just down the street. Tu-Sa 11 am-7 pm, Su till 5 pm. www.moonandarrow.com. 754 S. Fourth St., 215.469.1448.

SHOP SIXTY FIVE—Former New York City stylist Linda LaRosa hand-picks pieces from designers like Elizabeth & James, Rag & Bone and RTA, creating an edgy assortment of luxury knitwear, designer denim, occasion dresses and distinctive jewelry with a downtown vibe. M-Sa 11 am-7 pm, Su till 5 pm. www.shopsixtyfive.com. 128 S. 17th St., 267.239.5488. **Map 1, G5**

SOPHY CURSON—This salon-like spot carries a well-curated collection of gowns, day-into-evening looks, jewelry and accessories by Blumarine, Edward Achour and Tom and Linda Platt. M-F 9:30 am-5:30 pm, Sa 9:30 am-5 pm. www.sophycurson.com. 19th and Sansom streets, 215.567.4662. **Map 1, G5**

STEEL PONY—Longtime fashion insiders Joanne Litz and Dennis Wolk offer eco-friendly boho fashions and accessories that you can see being hand-dyed and sewn right in the store. Many items are one-of-a-kind and all are made in Philly with sustainable, locally sourced materials. Visit www.steelpony.com for store hours. www.steelpony.com. 758 S. Fourth St., 215.467.6065. **Map 1, K7**

VAGABOND BOUTIQUE—Located in Old City, this boutique and yarn shop highlights hand-knit sweaters, jump suits and crop tops with a bohemian vibe, plus a chic assortment of accessories. M-Sa 11 am-7 pm, Su till 5 pm. www.vagabondboutique.com. 37 N. Third St., 267.671.0737. **Map 1, K4**

Bath & Beauty

BLUEMERCURY—This East Coast company carries high-end cosmetics, skincare, haircare and fragrances with wise counsel by staff in a pressure-free environment. The brand's Tropicana location in Atlantic City has a full spa offering treatments like crystal facials, aromatherapy massages, detoxifying sea salt scrubs and more. M-Sa 10 am-7 pm, Su 11-6 pm. Spa Hours: M-Sa 10 am-7 pm, Su 11-6 pm. www.bluemercury.com. 1707 Walnut St., 215.569.3100. **Map 1, G5**

DUROSS & LANGEL—Proprietors Steve Duross and James Langel combine old family recipes and modern science to create a signature line of natural soaps, salts, lotions and potions in their colorful, contemporary apothecary. Ask about classes and workshops. Tu 11 am-7 pm, W-Th 11 am-8 pm, F-Sa 10 am-7 pm, Su noon-5 pm. Check for salon hours. www.durossandlangel.com. 117 S. 13th St., 215.592.7627. **Map 1, I5**

KIEHL'S—This renowned company uses the finest ingredients and unique formulations in their skin, hair and body care products. Stop by the shop at the Shops at Liberty Place. M-Sa 10 am-7 pm, Su noon-6 pm. www.kiehls.com. 1625 Chestnut St., 215.636.9936. **Map 1, G5**

L'OCCITANE—Francophiles and other stylish shoppers will enjoy L'Occitane's luxury beauty, bath and body products, which draw inspiration from the fragrances and culture of Provence. M-Sa 10 am-7 pm, Su, 11 am-6 pm. www.loccitane.com. 1606 Walnut St., 215.985.0279. **Map 1, H5**

Books & Music

ATOMIC CITY COMICS—This funky shop carries a wide selection of comics, graphic novels, back issues, manga and T-shirts, plus movies, toys and games. Look for frequent in-store events, too, including book signings. M-Tu noon-9 pm, W-Sa, 11 am-11 pm, Su 11 am-9 pm. www.bestphillycomics.com. 638 South St., 215.625.9613. **Map 1, J7**

BOOK CORNER—Browse more than 50,000 titles at this welcoming shop, located directly behind Philadelphia's Central Library near the Benjamin Franklin Parkway. Find new, rare and gently used

titles in all genres, whether your taste runs contemporary or classic. M-Sa 10 am-6 pm. www.facebook.com/Book-Corner-22079624193/. 311 N. 20th St., 215.567.0527. **Map 1, G3**

HEAD HOUSE BOOKS—Books covering every surface and a friendly staff make Head House Books help create an inviting space for browsing. Enjoy a free cup of coffee and settle in for a few hours. M-Sa 10 am-7 pm, Su 10 am-5 pm. www.headhousebooks.com. 619 S. Second St., 215.923.9525. **Map 1, K7**

JOSEPH FOX BOOKS—This charming spot in Center City offers an array of selections from architecture and non-fiction to literature and poetry. Open M-Sa 9:30 am-6 pm, W 9:30 am-7 pm. www.foxbookshop.com. 1724 Sansom St., 215.563.4184. **Map 1, G5**

UNIVERSITY OF PENNSYLVANIA BOOKSTORE—This giant book superstore carries over 80,000 titles, plus school supplies, gifts and UPenn apparel. M-F 8:30 am-9:30 pm, Sa 10 am-9:30 pm, Su 10 am-8 pm. www.upenn.bncollege.com. 3601 Walnut St., 215.898.7595. **Map 1, C5**

VINTAGE INSTRUMENTS—Since 1974, Vintage Instruments has focused on fine acoustic instruments, featuring a wide selection of C.F. Martin & Co. guitars for everyone from weekend pickers to seasoned professionals. Plenty of treasures abound in this 19th-century architectural treasure, from ukuleles to banjos and mandolins. Accessories include cases, strings, straps and much more. M-F 10 am-5 pm. www.pickamartin.com. 507 S. Broad St., 215.545.1000. **Map 1, H6**

Children's

BORN YESTERDAY—This boutique on Rittenhouse Square carries clothing and toys for infants and children from a wide range of European and domestic designers. M-Sa 10 am-6 pm, Su 11 am-5 pm. www.bornyesterdaykids.com. 1901 Walnut St., 215.568.6556. **Map 1, G5**

MOMO'S TREE HOUSE—Wrangling kids into this Old City boutique won't be a hassle—Momo's not only provides toys from hard-to-find specialty makers, but encourages kids to test them out on the spot. M-Th 11 am-6 pm, F 11 am-7 pm, Sa 10 am-7 pm, Su noon-5 pm. Fitter Square hours vary. www.momostreehouse.com. 205 Arch St., 267.457.2803. **Map 1, K4**

Crafts

BEADWORKS—A large selection of beads, gemstones, tools and notions helps DIYers create their own jewelry with the help of knowledgeable staff. Su-W, F noon-6 pm, Th, Sa noon-7 pm. www.beadworkphiladelphia.com. 619 E. Passyunk Ave., 215.413.2323. **Map 1, K7**

LOOP—This colorful store offers natural fiber, hand-painted and luxury yarns for knitting and crocheting. The shop also carries a full range of patterns, needles and notions and offers classes for all skill levels. M-F 11 am-6 pm, Sa-Su 11 am-5 pm. www.loopyarn.com. 1914 South St., 215.893.9939. **Map 1, G7**

PENNSYLVANIA GUILD OF CRAFTSMEN—One of the nation's largest and most recognized craft guilds offers a variety of classes from sketching to blacksmithing, and organizes several craft shows, including the annual Rittenhouse Square Fine



THE GUIDE

Craft show. www.pacrafts.org. 335 N. Queen St., Lancaster, Pa., 717.431.8706.

RITTENHOUSE NEEDLEPOINT—With 1,100 square feet of space, this shop carries all manner of tools and notions for needlepoint, including hand-painted canvases, top-quality fibers, accessories, books and even finished items. M-Sa 10:30 am-5:30 pm, W until 7 pm. www.rittenhouseneedlepoint.com. 1216 Arch St., second floor, 877.764.6880. **Map 1, G5**

Gifts & Decor

AIA BOOKSTORE & DESIGN CENTER—Located inside the Philadelphia Center for Architecture + Design, this store stocks tomes on architecture as well as distinctive gifts and design products for home and office. M-Sa 10 am-6 pm. www.aia bookstore.com. 1218 Arch St., 215.569.3186. **Map 1, I4**

THE ART SHOP AT MOORE COLLEGE OF ART & DESIGN—Within this formidable arts-education institution is an excellent shop dealing in jewelry, scarves and accessories, as well as prints, and greeting cards. The art and design pieces are created by Moore's emerging and established alumni in addition to current students. M-Sa 10 am-6 pm. www.moore.myshopify.com. 1916 Race St., 215.965.8586. **Map 1, G4**

ART STAR—Admire handmade clothes, jewelry and accessories, plus dolls, ceramics and prints at this gallery-style boutique in Northern Liberties. Tu-Sa 11 am-7 pm, Su noon-6 pm. www.artstarphilly.com. 623 N. Second St., 215.238.1557. **Map 1, K2**

BLENDO—This charming collection of vintage and modern day gifts includes everything from handbags, to stationary and pottery. M-Sa 11 am-6 pm, Su 11 am-5:30 pm. www.shopblendo.com. 1002 Pine St., 215.351.9260. **Map 1, I6**

CONTESSA'S FRENCH LINENS—Find lovely imported tablecloths and tea towels from Provence, Brittany and other French regions, plus one-of-a-kind aprons, jewelry and rosemary baskets at this shop in the historic Reading Terminal Market. M-Sa 10 am-6 pm, Su 10 am-3:30 pm. www.conteassafrenchlinens.com. 51 N. 12th St. in Reading Terminal Market, 610.306.4507. **Map 1, I4**

HELLO WORLD—Fans of mid-century modern head to this University City storefront for retro furnishings, funky fittings and accessories like vintage dominoes, plus gifts under \$25. M-F 10 am-7 pm, Sa-Su 11 am-5 pm. www.shophelloworld.com. 3610 Sansom St., 215.382.5207. **Map 1, C5**

THE MUSEUM STORE AT PAFA—The academy's gift shop stocks items inspired by exhibitions, plus accessories, jewelry, stationery and handcrafted decorative objects. Tu-Sa 9:30 am-5:30 pm, Su 11 am-5:30 pm. www.pafa.org/store. 128 N. Broad St., 215.972.2075 **Map 1, H4**

THE MUSEUM STORE AT THE PHILADELPHIA MUSEUM OF ART—At the museum's gift shop, find items inspired by past and current exhibitions, including posters, prints, jewelry, music and DVDs, toys, housewares, clothing and accessories. Tu-Su 10 am-5 pm; W, F until 8:45 pm. www.philamuseum.org/shopping. 2600 Benjamin Franklin Parkway, 215.684.7376. **Map 1, E2**

OLC—For more than 25 years, OLC has been providing the finest in contemporary European lighting and furniture. Based in Old City, this shop showcases furniture from the likes of Cassina and B&B Italia, lighting by Flos and Ingo Maurer. Tu-Sa

10 am-5 pm. www.olc152.com. 152 N. Third St., 215.923.6085. **Map 1, K4**

THE PAPERY—This Old City stationery mecca carries an upscale collection of paper goods and distinctive gifts, whether the occasion calls for classy or kitschy. Browse the wide selection of greeting cards, Italian leather albums, wax initial stamps and organizers. M-F 11 am-7 pm, W 11 am-8 pm, Sa 10 am-6 pm. www.paperyofphilly.com. 1219 Locust St., 215.922.1500. **Map 1, K4**

PHILADELPHIA INDEPENDENTS—At this Old City gift shop, you won't find the usual Phillies T-shirts and Liberty Bell snow globes. Philadelphia Independents stocks only handmade items by local makers, including jewelry, ceramics, accessories, home decor, artwork and baby gifts. M-Sa 11 am-7 pm, Su 11 am-5 pm. www.philadelphiaindependents.com. 35 N. Third St., 267.773.7316. **Map 1, K4**

RIKUMO—This local retailer stocks household goods from decor to kitchen essentials, beauty and stationery. Products found here are sourced directly from artisans and craftsmen in Japan, who practice ancient techniques. By connecting these traditional creators with a modern international public, store founders Kaz and Yuka Morihata aim to sustain the character and artistry of Japanese craftsmanship. M-Sa 11-7 pm, Su 11 am-5 pm. www.rikumo.com. 1216 Walnut St., 215.609.4972. **Map 1, I5**

SCARLETT ALLEY—This charming gift boutique is a gal's dream, offering a selection of beautiful jewelry, handbags, leather goods, fragrances, locations, stationery and home accessories. M noon-5 pm, Tu-F 11 am-7 pm, Sa 10 am-6 pm, Su noon-5 pm. www.scarlettalley.com. 241 Race St., 215.592.7898. **Map 1, K4**

TOWNHOME—This sophisticated shop carries stylish gifts for him, her, baby and home. The carefully edited selection includes cool note cards, hip coffee table books, candles, jewelry, home accents and adorable baby clothes and toys. M-Sa, 10 am-6 pm. www.townhomeonline.com. 1616 Walnut St., 215.972.5100. **Map 1, H5**

TRIBAL HOME—Tribal Home's cozy interior is artfully decorated with ritual art and African artifacts. M 11 am-5 pm, Tu-Fr 11 am-7 pm, Sa 11 am-5 pm. www.thetribalhome.com. 56 N. Third St., 215.592.4215. **Map 1, K4**

URBAN JUNGLE—Plant lovers rejoice! This nursery housed inside a former garage inspires with ideas, advice and the greenery to create gardens in the city. Workshops include lessons on topics like creating terrariums. M-Th 10 am-7 pm, F till 8 pm, Sa 9 am-8 pm, Su 9 am-6 pm. www.urbanjunglephila.com. 1526 E. Passyunk Ave., 215.952.0811. **Map 1, I8**

URBAN PRINCESS BOUTIQUE—This store is often recognized as a top spot for one-of-a-kind, affordable clothing and gifts. Inside, shop products by local artisans, like organic soaps and beauty products, jewelry, handbags and clothing. New inventory arrives almost daily. M-Sa noon-7 pm, Su noon-5 pm. www.urbanprincessboutique.com. 620 S. Fourth St., 267.909.8317. **Map 1, K7**

VERDE—A wide variety of colorful jewelry, accessories, perfume and whimsical gifts fill this shop. Head to the rear to watch chocolatiers make Marcie Blaine artisanal truffles, then select a few treats to take home. M-Sa 11 am-8 pm, Su noon-6 pm. www.verdephiladelphia.com. 108 S. 13th St., 215.546.8700. **Map 1, I5**

WORKSHOP UNDERGROUND—Taking queues from his previous gig at the Metropolitan Museum of Art, owner Ruben Luna sets up his shop like a museum. High-end artistic pieces seamlessly mix in with affordable knick-knacks. Come here for jewelry, apparel, home decor and gifts. W-Th noon-7 pm, F-Sa 11 am-8 pm, Su 11 am-5 pm. www.workshopunderground.com. 1544 South St., 215.987.3534. **Map 1, H6**

Gourmet & Specialty Foods

DI BRUNO BROTHERS—The original Italian Market outpost of this Philly mecca for world-class cheese bustles day and night. At the Chestnut Street location, find a gourmet food emporium with takeout panini, gelato and additional specialty items. Hours vary by location. www.dibruno.com. The Market at Comcast Center, 1701 JFK Blvd., 215.531.5666. **Map 1, G4**; 1730 Chestnut St., 215.665.9220. **Map 1, G5**; Italian Market location: 930 S. Ninth St., 215.922.2876. **Map 1, J8**; The Franklin, 834 Chestnut St., 267.519.3115.

GREEN AISLE GROCERY—A teeny tiny grocery store with an ambitious stock of products, including small-batch artisan goods from local and regional purveyors. Don't miss the hummus from Zahav, a local restaurant run by a James Beard Award-winning chef. M-F noon-8 pm, Sa 11 am-8 pm, Su noon-7 pm. www.greenaislegrocery.com. 1618 E. Passyunk Ave., 215.465.1411.

IOVINE BROTHERS PRODUCE—This urban market was founded more than 15 years ago in the historic Reading Terminal Market, and continues to provide a wonderful selection of local, domestic and international goods. M-Sa 8 am-6 pm, Su 9 am-5 pm. www.iovine.com. Reading Terminal Market, 1136 Arch St., 215.928.4366. **Map 1, I4**

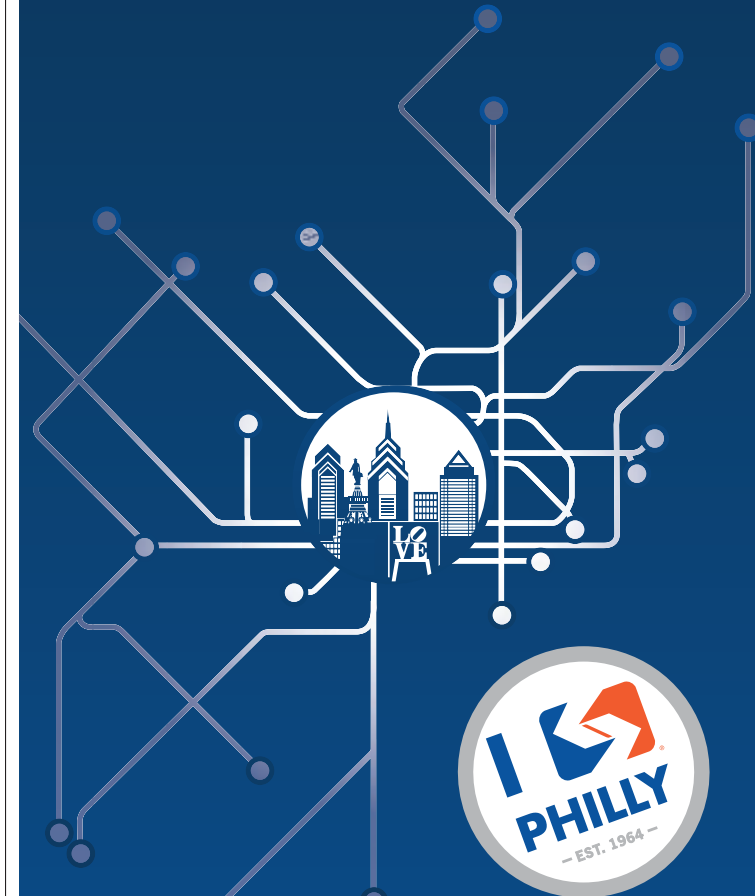
LORE'S CHOCOLATES—While in the historic district, indulge your sweet tooth with this candy shop's peanut butter balls, vanilla caramels and Liberty Bell-shaped chocolates among other tasty selections. M-F 9 am-5:30 pm, Sa 10 am-4 pm. www.loreschocolates.com. 34 S. Seventh St., 215.627.3233. **Map 1, J5**

MOM'S ORGANIC MARKET—This East Coast-based family-run chain started in 1987 and now counts stores in four states, plus Washington, D.C. The outpost in Philly stocks the grocer's namesake organic foods, plus a vegetarian eatery, a beekeeping section and a beer growler filling station. Daily 8 am-9 pm. www.momsorganicmarket.com. 34 S. 11th St., 215.709.0022. **Map 1, I5**

ROCKET FIZZ—Feed your nostalgia at this retro candy shop, offering everything from candy dots and whirly pops to bulk salt water taffy, plus, a variety of soda selections in flavors like bacon, s'mores and mud pie. M-Th 11 am-7 pm, F-Sa 11 am-9 pm, Su 11 am-6 pm. www.rocketfizz.com. 302 Arch St., 215.650.3163. **Map 1, K4**

TEUSCHER CHOCOLATES OF SWITZERLAND—A bright, beautiful store featuring gorgeous handmade Swiss chocolates and exquisite champagne truffles. Fantasy packages, gift wrapping, shipping and custom orders available. M-Sa 10 am-6 pm, Su noon-5 pm. www.teuscherphiladelphia.com. The Shops at The Bellevue, 200 S. Broad St., 215.546.7600. **Map 1, H5**

PHILADELPHIA ISN'T JUST A DESTINATION. IT'S A STARTING POINT.



With over 450 miles of track, SEPTA makes it easy to go from the hustle of the city to the charm of the suburbs. Expand your horizons with a shopping trip, history tour, nature hike, dinner date, or movie matinee. Wherever you stop, start with SEPTA.

LEARN MORE AT **ISEPTAPHILLY.COM**

SHOPPING



Jewelry

ADORNAMENTI—This warm and inviting shop on Antique Row carries a beautiful array of distinctive jewelry, from delicate pieces crafted with finely wrought silver to opulent necklaces with semiprecious stones, M, W-Sa noon-6 pm, Su noon-5 pm. 1106 Pine St., 215.922.2722. **Map 1, I6**

BELLA TURKA—The local owners of this jewelry shop regularly travel around the world in search of chic baubles, like gold coin necklaces, cocktail rings and chunky stone cuffs, and also offer funky items from select domestic designers. M-Sa 11 am-8 pm, Su noon-6 pm. www.bellaturka.com. 113 S. 13th St., 215.560.8733 **Map 1, I5**; 1700 Sansom St., 215.560.8734. **Map 1, G5**

CALEB MEYER—Visit this shop for exquisite, hand-crafted gold and platinum jewelry and fine American crafts. Caleb Meyer offers custom jewelry and gem buying for setting in their original designs. Tu-F 10 am-5:30 pm, Sa 10 am-5 pm. www.calebmeyer.com. 8520 Germantown Ave., 215.248.9250.

LAGOS—Philadelphia-based jeweler Lagos' one-and-only flagship store has been a fixture, located just steps from Rittenhouse Square. This jewel-box shop features award-winning collections in sterling silver and 18-kt. gold. Steven Lagos has been designing beautiful pieces accented with gemstones, diamonds and pearls for 40 years. Friendly and knowledgeable staff makes the shopping experience a pleasure. M-Sa 10 am-7 pm, Su noon-6 pm. www.lagos.com. 1735 Walnut St., 215.567.0770. **Map 1, G5**

MARYANNES. RITTER JEWELERS—Open since 1909, this store's experts create custom designs for fine diamonds and gemstones, and offer quality jewelry at affordable prices. Look for a large selection of cultured freshwater and saltwater pearls. M-Tu and Th-F 10 am-5 pm, W 10 am-6 pm, Sa noon-5 pm. www.maryannesritterjewelers.com. 704 Sansom St., 215.701.6255. **Map 1, J5**

TOURNEAU—This international brand offers more than 100 watch brands, including Cartier, Ferragamo, Gucci, Movado and 8,000 unique styles for men and women. M-Sa 10 am-9 pm, Su 11 am-6 pm. www.tourneau.com. Plaza at King of Prussia Mall, 160 N. Gulph Road, King of Prussia, Pa., 610.491.8801. **Map 4, A3**

Salons & Spas

FLOTATION PHILLY—This high-tech spa takes relaxation to another level. Enter the sensory-deprivation tanks—enclosed chambers filled with 10 inches of Epsom-salt water—and float for at least an hour. Have no fear—you can choose whether to float with the lights off or on (dimly). Memberships from \$39/month. Drop-ins from \$59. Hours vary by appointment. Reserve online. www.flotationphilly.com. 534 E. Girard Ave., 609.923.1913.

JUJU SPA & ORGANICS—A short stroll from South Street, this inviting spa specializes in all-natural skin care products, non-toxic manis-pedis, spa treatments and other pampering services. W, F 10 am-7 pm, Th 10 am-8 pm, Sa 10 am-6 pm, Su noon-7 pm. www.jujusalon.com. Salon, 713 S. Fourth St., 215.238.6080. **Map 1, K7**

MI CUMBIA ORGANICA—This top-rated nail salon operated by a husband-and-wife team offers water- and soy-based products for mani-pedis, foot massages and Brazilian waxing. By appoint-



THE GUIDE

ment. M-Tu, F-Sa 10 am-6 pm, W-Th 11 am-7 pm, Su 10 am-4 pm. www.micumbia.com. 328 S. 17th St., 215.735.7980. **Map 1, G6**

RESCUE SPA—This upscale European-style, contemporary space specializes in massage therapy, detoxification and microdermabrasion. M-F 9 am-8 pm, Sa 9 am-7 pm, select Su 10-5 pm. www.rescuespa.net/philadelphia. 1601 Walnut St., third floor, 215.772.2766. **Map 1, H5**

Shoes

BENJAMIN LOVELL SHOES—Style and comfort converge in casual and dress shoes from designers including Mephisto and UGG at two convenient locations. Rittenhouse hours: M-Sa 10 am-8 pm, Su 11 am-6 pm; Old City hours: M-Sa 11 am-7 pm, Su noon-6 pm. www.benjaminlovelleshoes.com. 1728 Chestnut St., 215.564.4655. **Map 1, G5; 60 N. Third St., 215.238.1969. Map 1, K4**

BUS STOP BOUTIQUE—British-born Elena Brennan has turned her Queen Village shop into a destination for fashionable shoes for both men and women. On historic Fabric Row, this hip shoe haven carries unique and comfy styles from hard-to-find designers. M-Sa 11 am-6 pm, F 11 am-7 pm, Su noon-5 pm. www.busstopboutique.com. 727 S. Fourth St., 215.627.2357. **Map 1, K7**

HEAD START SHOES—This luxury shoe store in Center City stocks the finest designers, including Fiorentini + Baker, Del Carlo and Vic Matie. M-Tu 10 am-6 pm, W-Sa 10 am-7 pm, Su 11 am-5 pm. www.headstartshoes.com. 126 S. 17th St., 215.567.3247. **Map 1, G5**

LAPSTONE & HAMMER—Kate Rohrer designed this only-in-Philadelphia haven for sneakerheads. While the store's collection of well-tailored menswear, grooming products and accessories have received rave reviews, what truly commands attention in this 4,000 square-foot space is its extensive sneaker collection. M-Sa 10 am-7 pm, Su noon-5 pm. www.lapstoneandhammer.com. 1106 Chestnut St., 215.592.9166. **Map 1, I5**

TOBOX SHOES—This chic local men's shop caters to the stylish and sophisticated gentleman with a great selection of shoes, accessories and leather goods. Shop the hippest brands you can't find anywhere else like John Lobb, Carmina, and Rancourt. M-Sa 9:30 am-7 pm, W till 8 pm. 1822 Chestnut St., 215.644.9435. **Map 1, G5**

UBIQ—This trendy sneaker boutique features shoes by Puma and Nike SB, plus racks of skater-inspired threads from Stüssy. Open M-Sa 10 am-8 pm, Su noon-6 pm. www.ubiqlife.com. 1509 Walnut St., 215.988.0194. **Map 1, H5**

Shopping Centers

KING OF PRUSSIA MALL—The East Coast's largest retail shopping complex includes seven world-class department stores including Bloomingdale's, Lord & Taylor and Nordstrom, plus 400 specialty shops like Tournearu and restaurants. The mall is easily accessible from Routes 202, Interstate 76 and the Pennsylvania Turnpike. M-Sa 10 am-9 pm, Su 11 am-6 pm. www.kingofprussia mall.com. 160 N. Gulph Road, King of Prussia, Pa., 610.265.5727. **Map 4, A3**

SHOP PENN—On the University of Pennsylvania campus in University City, find more than 75 national and independent retailers (Urban Outfitters,



Piazza Sempione
Blumarine
Fabiana Fillipi
Tom & Linda Platt
Catherine Regehr
Wolford
Planet by Lauren G
Up Pants
Sizes 2-18

Daytime to Evening
Summer 2018

Sophy Curson

19th & Sansom Streets 215.567.4662



Where to Eat, Shop, Play and Stay Is Just a Touch Away

Put the power of Where® in the palm of your hand. Our **Where Traveler City Guide** app gives you instant access to thousands of hand-picked recommendations for things to do and places to go in destinations all over the world. Download it today for iPhone and Android.

GET IT ON
Google play

Download on the
App Store

Contessa's French Linens



Now selling machine washable
linens made, designed and
sewn in the South of France

- Authentic French tablecloth business
- One-of-a-kind, stain resistant linens
- Quimper Products
- Authentic French Jewelry
- Polish Pottery



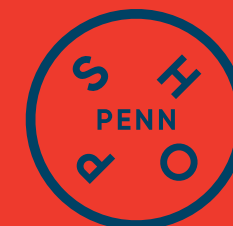
Reading Terminal Market
12 & Arch Streets, 3rd Ave., Row B
610.306.4507 • contessasfrenchlinens.com

Calling all Readers Leaders + Eaters

With more than 30 shops,
40 restaurants, and
15 sports and culture venues,
a day at Penn could take
you anywhere.

Shop smarter.
Shop Penn.

#SHOPPENN
@SHOPSATPENN



SHOPSATPENN.COM

SHOPPING



United By Blue, Amazon and Penn Bookstore), plus top-notch dining choices, art galleries and hotels. Hours vary by location. www.shopsatpenn.com. 34th through 38th streets, Chestnut to Spruce streets. **Map 1, C5 to D6**

THE SHOPS AT LIBERTY PLACE—This indoor, Center City shopping complex for fashion, jewelry, housewares and more has 55 specialty boutiques and international eateries. Retailers include Bloomingdale's The Outlet Store, ALDO Shoes and J. Crew. Take in Philadelphia from new attraction, One Liberty Observation Deck. M-Sa 9:30 am-7 pm, Su noon-6 pm. www.shopsatliberty.com. 1625 Chestnut St., between Liberty I and Liberty II office towers, 215.851.9055. **Map 1, H5**

Specialty

EYESITE—Located near Rittenhouse Square, this gallery-style optical shop offers "museum-quality" prescription eyewear and sunglasses by independent makers around the world. Find frames made of wood, horn, even leather and stone. Custom work also available. Tu-F 10 am-6 pm, Sa till 5 pm. www.eyesite-phil.com. 111 S. 18th St., 215.557.0757. **Map 1, G5**

PHILLY AIDS THRIFT—This nonprofit founded in 2005 sells an eclectic collection of donated items with proceeds going to local organizations involved in the fight against HIV/AIDS. M-Th 11 am-8 pm, F-Sa 11 am-9 pm, Su 11 am-7 pm. www.phillyaidsthrift.com. 710 S. Fifth St., 215.922.3186. **Map 1, K7**

PLEASURE CHEST—Located off Rittenhouse Square since 1974, this adult boutique offers intimate toys and products for men and women including lingerie, lubricants, bachelorette goodies, harnesses, rabbits, and sensual novelties. The staff is discreet, knowledgeable and friendly and will customize every shopping experience. Tu-Sa 11 am-7 pm. www.pleasurechestphilly.com. 2039 Walnut St., 215.561.7480. **Map 1, G5**

Sporting Goods & Apparel

MITCHELL & NESS—The flagship store of this world-renowned sports-gear provider offers more than 1,600 authentic styles of vintage jerseys, hats, warm-ups, jackets and so much more. Sports fans should take a turn through the store just to see the museum-quality memorabilia. M-Sa 10 am-7 pm, Su 11 am-5 pm. www.mitchellandness.com. 1201 Chestnut St., 267.273.7622. **Map 1, I5**

NOCTURNAL SKATE SHOP—One of the Philadelphia skate scene's go-to supply stops and hangouts, opened in 2000 by X Games gold medalist Kerry Getz. Skaters will find clothes, shoes, decks, trucks, wheels and every manner of skate accessory. M-Th noon-8 pm, F noon-9 pm, Sa 11 am-9 pm, Su noon-6 pm. www.nocturnalskateshop.com. 533 South St., 215.922.3177. **Map 1, J7**

SHIBE VINTAGE SPORTS—Founded by local sports enthusiasts, this store features retro-style shirts and hats appealing to the fashion-forward sports fan. The retailer's Originals line utilizes the talents of local artists and screen printers. Worldwide shipping available. www.shibevintagesports.com. 137 S. 13th St., 215.566.2511. **Map 1, I5**



Galleries+Antiques | June



The Clay Studio

This gallery and educational facility promotes the craft of ceramic arts by providing artist residencies, studio spaces, a gift shop, educational and outreach programs and a permanent collection. But visitors to this supportive space find works by artists at all levels, both emerging and expert. This month, the annual "The Clay Studio

National" showcases the best of today's ceramic art from across the country. Also this month, "Time Capsule" highlights 14 young artists participating in the studio's work exchange program, whose pieces reflect the present, while envisioning the future of ceramic art. www.theclaystudio.org. 137-139 N. Second St., 215.925.3453. Map 2, E3



Bridgette Mayer Gallery

Established in 2001, this 3,000-sq.-ft. sleek, minimalist space offers contemporary work by artists living in the U.S. and abroad. Find paintings, sculptures and photography with an emphasis on beauty, technology and culture in regularly rotating exhibitions. www.bridgettemayergallery.com. 709 Walnut St., 215.413.8893. Map 1, J5

Antiques Shops

ANASTACIA'S ANTIQUES—Anastacia's is brimming with affordably priced antiques and quirky collectibles of all kinds, from furnishings and lamps to dolls, books and jewelry. Staff occasionally takes shopping trips for merchandise during store hours so call in advance. Th-Sa noon-6:30 pm, Su noon-5 pm. www.anastaciasantiques.com. 617 Bainbridge St., 215.928.9111. Map 1, J7

ANTIQUE SHOWCASE—Find fine European furniture, lighting accessories and objets d'art at this charming antique shop located in the ritzy Rittenhouse neighborhood. M-Sa 10 am-6 pm. www.antiquesthowspace.com. 1625 Pine St., 215.545.0860. Map 1, H6

ARCHITECTURAL ANTIQUES EXCHANGE—Across 30,000 square feet of space in the Northern Liberties neighborhood, this vast warehouse stocks a range of architectural antiques, from the late 1700s through the 1930s. Exciting items have been reclaimed from French castles and churches; others include mantels, doors, beds, carved furniture and ironwork. M-Sa 10 am-5 pm. www.architecturalantiques.com. 715 N. Second St., 215.922.3669. Map 1, K2

FREEMAN'S—One of the premier auction houses for fine arts and antiques is also the nation's oldest. M-Th 9 am-5 pm, F 9 am-3 pm, special office hours during auction exhibitions. www.freemansauction.com. 1808 Chestnut St., 215.563.9275. Map 1, G5

GARDEN GATE ANTIQUES—Another stop in Chestnut Hill, this two-story shop features a wide range of items from West African art to Steiff animals, including but not limited to vintage and antique furnishings, clothing, jewelry and books. M-Sa 11 am-5 pm, Su noon-5 pm. www.bowmanch.com/property/gardengate. 8139 Germantown Ave., 215.248.5190. Map 3, B/C3

GEORGE T. HOBE ANTIQUES & FINE ART—Art and artifacts from the 18th through the 20th centuries fill this cozy space to the brim. Objects sometimes even spill out onto the sidewalk for the casual passerby to admire. Tu-Th 7 am-2 pm or by appointment. 8407 Germantown Ave., 215.247.5733.

KOHN & KOHN ANTIQUES—Kohn & Kohn Antiques has been known for fine antiques in Philadelphia since 1932. Its inventory is broad with an emphasis on glass, furniture, porcelain and silver. Also check out the tobacciana collection, which includes cigarette cases, cigar cutters and elegant lighters. Open by appointment and by chance. www.kohnandkohnantiques.com. 1112 Pine St., 215.923.0432. Map 1, I6

M. FINKEL & DAUGHTER—Opened in 1947 in an 1840s building on beautiful Antique Row, family-owned M. Finkel & Daughter continues to sell period antiques, 18th- and 19th-century furniture, and a highly acclaimed collection of

needlework and silk embroideries spanning the 17th to mid-19th centuries. Call for an appointment. www.samlings.com. 936 Pine St., 215.627.7797. Map 1, I6

NIEDERKORN ANTIQUE SILVER—For more than 25 years, Niederkorn Antique Silver has been focusing on 19th- and 20th-century fine silver. Located just off Rittenhouse Square, this tiny store brims with sterling Christmas ornaments, jewelry, tea sets and napkin rings, Judaica, desk accessories and books on the art of silversmithing. Tu-Th 11:30 am-7 pm, F-Sa 11:30 am-5:30 pm. www.niederkornsilver.com. 244 South 22nd St., 215.567.2606. Map 1, G6

THE PHILADELPHIA PRINT SHOP—Pore over the impressive collection of more than 20,000 historical prints and antique maps from the 16th through the early-20th centuries. Those looking for an affordable piece of fine art will have luck here—many prints are priced under \$100. M-Sa 10 am-5 pm. www.philaprintshop.com. 8441 Germantown Ave., 215.242.4750. Map 3, B2

Art Galleries

3RD STREET GALLERY—In the heart of Old City's gallery district, 3rd Street Gallery features a diverse mix of artists working in various media. In operation since 1978, this artist-run cooperative is devoted to presenting a quality experience of visual arts, all the while encouraging risk and experimentation in their artists' works. W-Su

There's a lot more going on this June. Visit us online: wheretotraveler.com

Stephen Cimini
Sand Dollar
18 x 8, Mixed Media

Bluestone Fine Art Gallery
72 North 2nd Street • Philadelphia
856.979.7588 • bluestone-gallery.com
Complimentary Shipping
within the United States

DISCOVER THE EXCITEMENT OF ARENA FOOTBALL WITH PHILLY'S BACK-2-BACK CHAMPIONS!

TICKETS START AS LOW AS \$15

JOIN US IN JUNE!
SUNDAY, JUNE 10TH AT 4PM VS. THE WASHINGTON VALOR
SATURDAY, JUNE 30TH AT 7PM VS. THE BALTIMORE BRIGADE

FOR TICKETS: VISIT THE WEBS FARGO CENTER BOX OFFICE ON GAME DAYS OR FOR DISCOUNTED TICKETS VISIT PHILADELPHIASOUL.COM/WHERE 888-789-SOUL TICKETS@PHILADELPHIASOUL.COM

noon-5 pm. www.3rdstreetgallery.com. 45 N. Second St., 215.625.0993. Map 1, K4

THE BAZEMORE GALLERY—Located in Manayunk, this gallery features an array of artists inside a space whose design is based on the five elements of Feng Shui. Find pop imagery, abstract landscapes, glass blown artwork and more, plus, rotating exhibits and The Living Wall, an indoor sustainable planting panel. W-Su noon-7 pm. www.thebazemoregallery.com. 4339 Main St., 215.482.1119.

BLUESTONE FINE ART GALLERY—This gallery features original works by contemporary and traditional artists in a range of mediums, including painting, ceramics and sculptures. See the work of well-known and emerging local artists. Each month new exhibitions kick off during Philadelphia's First Fridays, which draws hundreds of art lovers to the neighborhood. Tu-F 10 am-5 pm, Sa noon-4 pm. www.bluestone-gallery.com. 72 N. Second St., 856.979.7588. Map 1, K4

BORRELLI'S CHESTNUT HILL GALLERY—Representing 40 local, national and international artists, this gallery and custom framing shop offers a diverse collection of landscapes, cityscapes and still lifes from many schools of painting. Regular, rotating exhibitions feature represented artists. The custom framing center offers everything from restoration to museum-quality looks. Tu-F 10 am-5:30 pm, Sa 10 am-5 pm, Su noon-4 pm. www.chestnuthillgallery.com. 1 East Gravers Lane, 215.248.2549.

CALDERWOOD GALLERY—Owners Gary and Janet Calderwood showcase their personal art collection of 20th-century design and fine photography across 30,000 square feet of space. Find museum-quality French Art Deco by Ruhlmann, Arbus, Dufrene and others, Mid-century Modern decorative arts and more. Gary Calderwood's photography presents a visual history of the 20th century. Ships internationally. M-F 11 am-5 pm, Sa-Su by appointment. www.calderwoodgallery.com. 242 Geiger Road, 215.546.5357.

CARRÉ D'ARTISTES—This art gallery is a leader in affordable, contemporary art, selling world-class, original paintings and specializing in a wide variety of artistic styles, from figurative and abstract to landscape, Pop and street art, all created by a vast collection of internationally known artists. Framing services available. Daily 11 am-8 pm, extended hours on First Fridays. www.carredartistesphilly.com. 104 S. 13th St., 215.735.2800. Map 1, I5

THE CENTER FOR ART IN WOOD—This not-for-profit museum, gallery and research center focuses on woodworks, showcasing all methods of wood art-making including turned and carved sculptures by renowned artists and craftsmen. Tu-Sa 10 am-5 pm. www.centerforartinwood.org. 141 N. Third St., 215.923.8000. Map 1, K4

THE CENTER FOR EMERGING VISUAL ARTISTS—This local resource fosters the development and careers of visual artists, among them Lori Banks, Colette Fu and Jack McGovern. Open M-F 11 am-5 pm, or by appointment. www.cfeva.org. The Barclay, 237 S. 18th St., suite 3A, 215.546.7775. Map 1, G6

CERULEAN ARTS GALLERY & STUDIO—Located just off of North Broad Street, the gallery exhibits eclectic decorative and fine art while the studio



offers art instruction and weekend workshops. In addition to the displayed works of more than 100 artists, the gallery also proffers handmade wares from an additional 100 artisans. W-F 10 am-6 pm, Sa-Su noon-6 pm. www.ceruleanarts.com. 1355 Ridge Ave., 267.514.8647. Map 1, H2

DA VINCI ART ALLIANCE—Founded in 1931, this South Philly-based nonprofit organization holds programs year-round in order to support regional artists. Programs include juried exhibitions, solo exhibitions and collaborations with other nonprofit art organizations. Most events are free and open to the public. W 6-8 pm, Sa-Su 1-5 pm. www.davinciartalliance.org. 704 Catharine St., 215.550.1446. Map 1, J7

EAST FALLS GLASSWORKS—It's worth the trek out to the East Falls neighborhood to visit this hidden treasure, where Philadelphia artists work with hot molten glass to create beautiful works of art. The teaching studio's on-site gallery displays and sells a small collection of works by area artists. Class schedule online. M-F 10 am-6 pm, Sa-Su by appointment. www.eastfallsglass.com. 3510 Scotts Lane, 215.908.7924.

F.A.N. GALLERY—Located in a 1700's Colonial building in Old City, this gallery features emerging and established artists in the classic tradition of American painting. The first floor features a different artist each month, with many from right here in Philadelphia. The second floor displays group exhibitions, ranging from figurative to landscape and still-life. W-Su noon-6 pm. www.thefangallery.com. 221 Arch St., 215.922.5155. Map 1, K4

FLEISHER ART MEMORIAL—In addition to offering a rotating display of wide-ranging works by local artists, this gallery also hosts an extensive catalog of inexpensive workshops and free classes for all skill levels. M-F 10 am-5 pm. www.fleisher.org. 719 Catharine St., 215.922.3456. Map 1, J7

FLEISHER/OLLMAN GALLERY—Founded in 1952, Fleisher/Ollman Gallery earned its reputation as a premier source of self-taught artists, and today it exhibits contemporary artists who reflect the influence of the self-taught, including Martin Ramirez, Bill Traylor and Tristin Lowe. Tu-F 10:30 am-5:30 pm, Sa noon-5 pm. www.fleisher-ollmangallery.com. 1216 Arch St., Suite 5A, 215.545.7562. Map 1, H6

GALLERY 51—This antique textile art and oriental rugs gallery features works from all over the world, spanning the last 2,000 years. Find tribal carpets from Central Asia, Ancient Coptic ethnographic textiles and work by contemporary artists, including Alan Magee, Bo Young Moon and Christopher Windle. Tu-F 11 am-6 pm, Sa noon-5 pm, Su-M by appointment. www.gallery51.net. 51 N. Second St., 215.413.3191. Map 1, K4

GALLERY 1401—Part of the University of the Arts, this gallery on the 14th floor of Terra Hall showcases photography exhibitions by professionals in collaboration with the University. Exhibitions feature established and emerging photographers from all over the world. M-F 10 am-4 pm, Sa-Su by appointment. www.uarts.edu. The University of the Arts, 211 S. Broad St., 14th floor, 215.717.6300. Map 1, H6



TGIF! On the first Friday of every month, art galleries and shops in the Old City neighborhood stay open late, hosting new exhibits and special events.

(FROM LEFT) COURTESY EACH COMPANY



GERSHMAN GALLERY—Collectors and art lovers here find innovative works celebrating Jewish culture, as well as a showcase of fine art photography. Located inside the Gershman Y. M-F 9 am-5 pm. www.gershmany.org. 401 S. Broad St., 215.545.4400. **Map 1, H6**

GRAVERS LANE GALLERY—Located in Chestnut Hill, this edgy, contemporary art gallery exhibits works by both established and emerging artists from around the world. Its media spectrum is broad, including painting, sculpture, fiber and paper. M-Sa 10 am-6 pm, Su noon-5 pm. www.graverslanegallery.com. 8405 Germantown Ave., 215.247.1603. **Map 3, B2**

GROSS MCCLEAF GALLERY—Representing local and national artists with a focus on contemporary art, this gallery has been active in the Philadelphia arts community for more than 40 years. Advising collectors and placing art in museums throughout the region, Gross McCleaf also features monthly rotating exhibitions in two main galleries, as well as special events, artist talks and an extensive inventory. T-Sa 10 am-5 pm. www.grossmccleaf.com. 127 S. 16th St., 215.665.8138.

INLIQUID ART & DESIGN—This educational resource and exhibition gallery represents a seamless combination of art and the Internet. Go to their website to see the portfolios of over 330 artists, then visit their Fishtown gallery to the work of those artists on display throughout the year. www.inliquid.org. 1400 N. American St., 215.235.3405.

JAMES OLIVER GALLERY—This unique, contemporary loft-style gallery, nestled in the heart of the Historic District, features local, national and international artists in the disciplines of painting, mixed media, photography and installation works that have been recognized by notables such as NPR and Huffington Post. W-F 5 pm-8 pm, Sa 1 pm-8 pm or by appointment. www.jamesolivergallery.com. 723 Chestnut St., 4th floor, 267.918.7432. **Map 1, J5**

KAMIN GALLERY—Housing books and objects commemorating the lives of noted Philadelphians including Benjamin Franklin, Marian Anderson and Tom Phillips, this repository also offers a fascinating gallery on the University of Pennsylvania campus, inside the Van Pelt-Dietrich Library. M-F 9 am-5 pm, Sa-Su by appointment. www.library.upenn.edu. 3420 Walnut St., 1st floor, 215.898.7555. **Map 1, D5**

KHMER ART GALLERY—Philadelphia's resident outpost for Cambodian art, Khmer's cavernous space houses an extensive selection, from ancient works to commissioned pieces, at a broad array of price points. Find stone and wood sculpture, works in copper, pottery, textiles, painting and jewelry. W and F-Sa 11 am-4 pm, and by appointment. www.khmerartgallery.com. 319 N. 11th St., 215.922.5600. **Map 1, I3**

THE LEONARD PEARLSTEIN GALLERY—Located in the Westphal College of Media Arts and Design at Drexel University, this gallery exhibits work across many disciplines, from architecture to fashion. National and international artists are featured, as well as Westphal professors. Open Tu-Su 11 am-6 pm. www.drexel.edu/westphal/resources/LeonardPearlsteinGallery. 3401 Filbert St., 215.895.2548. **Map 1, D5**

LOCKS GALLERY—This elegant gallery overlooking Washington Square features critically acclaimed regional, national and international contemporary artists. Open Tu-Sa 10 am-6 pm. www.locksgallery.com. 600 Washington Square South, 215.629.1000. **Map 1, J6**

MODE MODERNE—This modern styled gallery features furniture and the artwork from a variety of artists from the 20th and 21st centuries. Select from vintage furniture, colorful knickknacks and decor pieces by well-known artisans. Th-Sa noon-6 pm. www.modemoderne.com. 159 N. 3rd St., 215.627.0299. **Map 1, K4**

MODERNE GALLERY—Twenty-thousand square feet across five floors offers ample space in this historic Old City building to showcase high-quality, vintage 20th-century furniture, lighting and decorative accessories. Find French and American Art Deco and French 1940s-1950s pieces, work by George Nakashima and Wharton Esherick, and other studio crafts by Wendell Castle, David Ebner, Toshiko Takaezu, to name a few. Daily noon-5 pm. www.modernegallery.com. 111 N. 3rd St., 215.923.8536. **Map 1, K4**

MOUNT AIRY COUNTRY—Husband-and-wife artists Colin Keefe and Andrea Wohl Keefe run this charming exhibition space in the carriage house behind their residence. Here, find not only their own works, but also those of other artists in the region. Call for hours. www.mountairycontemporary.com. 25 W. Mt. Airy Ave., 267.270.2787

MUSE GALLERY—This artist-run Old City gallery encompasses a range of styles including abstract, conceptual and representational. Each month, the gallery highlights a different artist's work in varying disciplines, creating a new experience for each visit. W-Su noon-5 pm. www.musegalleryphiladelphia.com. 52 N. Second St., 215.627.5310. **Map 1, K4**

PAINTED BRIDE ART CENTER—This funky, interdisciplinary Old City venue features experimental theater, dance, music and visual arts by some of the world's cutting-edge artists. www.paintedbride.org. 230 Vine St., 215.925.9914. **Map 1, K3**

PENNSYLVANIA GUILD OF CRAFTSMEN—One of the nation's largest and most recognized craft guilds offers a variety of classes from sketching to blacksmithing, and organizes several craft shows, including the annual Rittenhouse Square Fine Craft show. www.pacrafts.org. 335 N. Queen St., Lancaster, Pa., 717.431.8706.

PENTIMENTI GALLERY—Discover content-driven work that challenges traditional use of materials and aesthetics at this Old City gallery. Some unconventional materials used in past displayed works include packaging tape, marine vinyl and embroidered x-rays. W-F 11 am-5 pm, Sa noon-5 pm, Tu by appointment. www.pentimenti.com. 145 N. Second St., 215.625.9990. **Map 1, K4**

PHILADELPHIA ART ALLIANCE—Established in 1915, the oldest multidisciplinary arts center in the nation joined with the University of the Arts. The Alliance exhibits a wide range of contemporary fine art and crafts, with frequent lectures, recitals and reading groups. Free. Tu-Su noon-6 pm. www.philartalliance.org. 251 S. 18th St., 215.545.4302. **Map 1, G6**

PHILADELPHIA PHOTO ARTS CENTER—A nonprofit organization devoted to the study, practice and appreciation of photography, the PPAC offers educational programs, photographic exhibitions and lectures by practicing artists within the Crane Arts complex. Open Tu-Sa 10 am-6 pm. www.philaphotoarts.org. 1400 N. American St., Suite 103, 215.232.5678.

THE PHILADELPHIA SKETCH CLUB—Founded in 1860 by six former students of the Pennsylvania Academy of the Fine Arts, this is America's oldest artists club. See exhibits by established and emerging artists in the main gallery of the historic building. W and F-Su 1 pm-5 pm. www.sketchclub.org. 235 S. Camac St., 215.545.9298. **Map 1, I6**

THE PLASTIC CLUB ART GALLERY—Since 1897, this gallery has been devoted to the promotion and preservation of the visual (plastic) arts in Philadelphia. Open during workshop hours or by appointment. www.plasticclub.org. 247 S. Camac St., 215.545.9324. **Map 1, I6**

THE PRINT CENTER—Founded in 1915, this nonprofit gallery was one of the very first venues in the country dedicated to prints. The center continues to support printmaking and photography as vital contemporary arts with regularly scheduled exhibitions, plus it has a gallery store. Tu-Sa 11 am-6 pm. www.printcenter.org. 1614 Latimer St., 215.735.6090. **Map 1, H6**

SCHWARZ GALLERY—For more than 75 years, the Schwarz family has been a leading source of fine European and American paintings for serious collectors and museums. Located just off Rittenhouse Square. Tu-F 10 am-6 pm, Sa by appointment. www.schwarzgallery.com. 1806 Chestnut St., 215.563.4887. **Map 1, G5**

SERAPHIN GALLERY—This gallery reps modern and contemporary painters, sculptors and photographers and advances the careers of emerging artists, particularly locals. W-Su 10 am-5 pm, and by appointment. www.seraphin.squarespace.com. 1108 Pine St., 215.923.7000. **Map 1, I6**

SNYDERMAN-WORKS GALLERIES—The acclaimed Works Gallery, founded in 1965, is a contemporary studio crafts gallery. The Snyderman Gallery, opened in 1983, features paintings, prints, photos and sculptures. Tu-Sa 10 am-6 pm. www.snyderman-works.com. 303 Cherry St. 215.238.9576. **Map 1, K4**

TWENTY-TWO GALLERY—Admire beautiful paintings, sculptures, photography and mixed-media works by local and national artists at this 22-member gallery. W-Su noon-6 pm, or by appointment. www.twentytwogallery.com. 236 S. 22nd St., 215.772.1911. **Map 1, F6**

VOX POPULI—For more than a quarter century, this nonprofit collective has specialized in contemporary works by under-represented artists. Offerings include monthly exhibitions, gallery talks and other programming. The Blackbox Gallery, is home to a curated video program (regular hours) and a live arts program (after hours). W-Su noon-6 pm. www.voxpopuligallery.org. 319 N. 11th St., third floor, 215.238.1236. **Map 1, I3**

WEXLER GALLERY—Find innovative functional and nonfunctional pieces by master craftsmen and emerging artists in a variety of media here. Tu-Sa 10 am-6 pm, M by appointment. www.wexlrgallery.com. 201 N. Third St., 215.923.7030. **Map 1, K4**

Dining



Vernick Food & Drink

Refinement and perfection are the hallmarks of this husband-and-wife operation in Rittenhouse Square. James Beard Award-winning chef Greg Vernick's thoughtful global menu showcases techniques honed while working in kitchens around the world. www.vernickphilly.com. 2031 Walnut St., 267.639.6644. **Map 1, G5**

Avenue of the Arts

AQIMERO—New Latin. Inside the lobby of the iconic Ritz-Carlton Philadelphia, across from City Hall, acclaimed chef Richard Sandoval serves up everything from sushi and ceviche to sustainably caught seafood creations with a Latin accent. B, D (daily), L (M-F), Br (Sa-Su). www.aqimero.com. 10 Avenue of the Arts, 215.523.8200. \$\$\$ **Map 1, H5**

JET WINE BAR—Wine Bar. This smart wine bar offers an intriguing list of more than two dozen global vintages by the glass. Find Hungarian somlo and German pinot noir. Pair your choice with tasty bites such as ahi poke wontons, roasted scallion labneh or an artisanal cheese plate. D (daily), Br (Sa-Su). www.jetwinebar.com. 1525 South St., 215.735.1116. \$\$ **Map 1, H7**

MCCORMICK & SCHMICK'S—Seafood. This bustling 290-seat establishment brings the flavors of the Pacific Northwest to Philadelphia, plus draft beers, single malts and Northwest wines. For a more intimate meal, head upstairs to cozy booths. L, D (daily). www.mccormickandschmicks.com. 1 S. Broad St., 215.568.6888. \$\$\$ **Map 1, H5**

MORTON'S, THE STEAKHOUSE—Steak. An extensive wine selection is just a bonus of this signature Chicago steakhouse experience. Wet-aged prime beef broiled Midwestern-style makes for hearty, large portions, but also try pork, lamb and veal chops, as well as tasty seafood offerings. D (daily). www.mortons.com. 1411 Walnut St., 215.557.0724. \$\$\$ **Map 1, H5**



Double Knot

In Midtown Village, this tri-level spot offers tasty surprises. On the main floor, sip coffee and tuck into pastries plus fast-casual Vietnamese. When the sun goes down, head upstairs to the full-service bar. In the basement? A Japanese izakaya serving duck scrapple bao buns. www.doubleknotphilly.com. 120 S. 13th St., 215.631.3868. **Map 1, I5**



Bar Bombon

In the bustling Avenue of the Arts area, this restaurant from the folks behind HipCityVeg serves vegan food with Latin flavors, like Puerto Rican empanadas and Venezuelan arepas. If time is tight, order from the convenient takeout window. www.barbombon.com. 133 S. 18th St., 267.606.6612. **Map 1, G6**

SO CREPE—French. French owners Frederic Elmalek and Fabrice Goutte batter up authentic sweet and savory crepe varieties and make everything in house, from the whipped cream to the salted butter caramel. B, L (M-Sa), D (daily), Br (Su). www.socrepe.com. 1506 South St., 267.761.9310. \$ **Map 1, H7**

TAVERN ON BROAD—American. Head beneath the Bellevue building for burgers and beers, plus the game on one of the restaurant's 34 high-definition TVs. Space for private parties available. L, D (daily). www.tavernonbroad.com. The Bellevue, 200 S. Broad St., 215.546.2290. \$\$ **Map 1, H5**

VALANNI—Mediterranean. Sleek yet laid-back, this neighborhood spot is a few blocks from the Avenue of the Arts. Tuck into modern Mediterranean entrées and appetizers like spicy pulled chicken empanadas, lamb sliders and paella. D (daily), Br (Su). www.valanni.com. 1229 Spruce St., 215.790.9494. \$\$\$ **Map 1, I6**

VOLVER—American. Volver is Spanish for "to return," and with this high-class restaurant, chef Jose Garces does just that, revisiting his favorite culinary experiences from around the world. The diverse, seasonal, and often locally sourced menu features some of the most innovative dishes in the city. D (Tu-Sa). www.volverrestaurant.com. 300 S. Broad St., 215.670.2302. **Map 1, H6**

There's a lot more going on this June. Visit us online: wheretotraveler.com

XIX (NINETEEN)—American. For a special evening, take the elevator to the 19th floor of the Hyatt Philadelphia at The Bellevue. Settle in beneath the restaurant's spectacular pearl chandelier, or enjoy your meal in the more relaxed cafe space. B, L (M-Sa), D (daily), Br (Su). www.nineteenrestaurant.com. Hyatt Philadelphia at The Bellevue, 19th floor, Broad and Walnut sts, 215.790.1919. \$\$\$ **Map 1, H5**

Center City & Rittenhouse

24—Italian/Pizza. Antipasti, pizza and pasta dishes are the focus at this chef Jose Garces eatery along the Schuylkill Banks. Classic pizza options are served alongside more unusual choices including lamb sausage or clam pizzas. Apart from the wood-fired fare, diners will be treated to an extensive Italian wine list. The "Aperitivo" happy hour occurs daily with drink specials, snacks and small plates. L (M-F), D (daily), brunch (Sa-Su). www.24philly.com. 2401 Walnut St., 215.333.3331. \$\$

BAOLOGY—Taiwanese. Husband-and-wife team, Judy Ni and Andy Tessier's first restaurant serves up fast-casual street food with a roster of ingredients that changes with the season. On the menu, find Ni's childhood favorites the way her grandmother made: Berkshire pork, shrimp and spinach potstickers; Taiwanese free-range fried chicken; wild-caught shrimp ruen bings (like a mini burrito). L (M-Sa), D (M-F). www.baoology.com. 1829 John F. Kennedy Blvd., 215.999.2263. \$ **Map 1, G4**





BLUESTONE LANE—Coffee House. This Australian-style cafe pours caffeinated drinks, plus a signature avocado “smash” on multigrain toast with sunflowers and a pepita-seed pesto, goat cheese and an optional organic poached egg. B, L (daily). Hours and meals vary by location. www.bluestonelany.com. 1701 Locust St., 718.374.6858. **\$ Map 1, G6**; 160 N. Gulph Road, 267.758.5915.

BUTCHER AND SINGER—Steak. This stunning steak and chop house from Stephen Starr has a modern supper-club vibe, thanks to 28-foot-high ceilings, seductive leather booths, bold draperies and two magnificent chandeliers. It’s a glam setting for tucking into Starr’s top-notch steaks and chops. L (M-F), D (daily). www.butcherandsinger.com. 1500 Walnut St., 215.732.4444. **\$\$\$ Map 1, H5**

DAVIO’S NORTHERN ITALIAN STEAKHOUSE—Steak. On the second floor of the historic Provident Bank Building, Davio’s serves prime natural-aged steaks as well as veal chops and seafood beneath soaring 24-foot ceilings. B, L (M-F), D (daily), Br (Su). www.davios.com. 111 S. 17th St., 215.563.4810. **\$\$\$ Map 1, G5**

DEL FRISCO’S DOUBLE EAGLE STEAK HOUSE—Steakhouse. Enjoy top-quality steaks in an elegant booth or drink up at one of a handful of bars located within the sweeping former First Pennsylvania Bank building. Patrons can dine in the Vault Room (a former bank vault) or below the restaurant’s extravagant three-story wine tower. L (M-F), D (Daily), Br (Su). www.delfriscos.com. 1426 Chestnut St., 215.246.0533. **\$\$\$ Map 1, H5**

DIZENGOFF—Israeli. Hummus is key at this quick-service establishment. The menu is simple: five variations of hummus rotate daily—think lamb, cabbage, chicken and beets—and come with pita, Israeli salad and pickles. Inside, picnic tables fill the cozy space, while outside, prime seats along Sansom Street make for great people watching in good weather. L, D (daily). www.dizengoffphilly.com. 1625 Sansom St., 215.867.8181. **\$ Map 1, H5**; Whole Foods, 2101 Pennsylvania Ave., **Map 1, G3**

ELIXR COFFEE—Coffee. Founded in 2010, this roaster started as an idea between friends. Today, in addition to roasting, the shop sources, prepares and delivers delicious light-roast brews. In the mood for a side of art with your coffee? Elixr also hosts a top-notch rotating series of murals and installations. M-Sa 7 am-8 pm, Su 8 am-7 pm. www.elixrcoffee.com. 207 S. Sydenham St., 239.404.1730. **\$ Map 1, H5**

ERAWAN THAI CUISINE—Thai. This inviting BYOB offers tasty and authentic dishes with fresh ingredients. A friendly staff helps guests select spices to fit specific tastes. BYOB. L, D (Tu-Su). www.erawanthaiphillly.com. 123 S. 23rd St., 215.567.2542. **\$ Map 1, F5**

FINE PALATE—Global American. This fine-dining establishment focuses on globally inspired fare using high-quality ingredients. Enjoy fried oysters at brunch and pork belly, quail and black truffle mac and cheese at dinner. D (Tu-Sa), Br (Sa-Su). www.finepalategroup.com. 231 S. 15th St., 267.318.7971. **\$\$\$-\$\$\$ Map 1, H6**

GOLDIE—Middle Eastern. From James Beard Award-winner Michael Solomonov and Steve Cook, owners of lauded Zahav, comes this fast-casual concept with a simple menu: falafel, fries and tehina shakes. Located above Rooster Soup Company. L, D (daily). www.goldiefalafel.com.

1526 Sansom St., 267.239.0777. **\$ Map 1, H5**; 2101 Pennsylvania Ave., 215.557.0015.

HARP & CROWN—American. Upstairs, a vintage-wallpapered 140-seat dining room provides Old World-style ambiance, while downstairs, a bar and two-lane, reservations-only bowling alley called Elbow Lane keep revelers entertained. For sustenance, find wood-fired pizza, charcuterie and New American entrees, plus a distinctive cocktail list. D (daily), Br (Sa-Su). www.harpcrown.com. 1525 Sansom St., 215.330.2800. **\$\$ Map 1, H5**

JAMES—American. This restaurant aims to blend a cozy dining experience with modern American cuisine, like bacon wrapped meatloaf and Moroccan-spiced wings. The restaurant’s signature cocktails are the efforts of a team of veteran mixologists, crafted with local spirits and fresh-squeezed juices. L (M-F), D (daily), Br (Sa-Su). www.jamesphiladelphia.com. 1835 Arch St., 267.324.5005. **\$\$\$**

JOE COFFEE—Coffee. Founded in 2003 in New York City’s West Village, Joe has made its way to Philadelphia with locations in University City and Rittenhouse Square. With a commitment to fair trade and quality, this cafe aims to make a cup of coffee that’s satisfying in more ways than one. Hours vary by location. www.joeneuwork.com. 1845 Walnut St., 215.278.2454. **Map 1, G5**; 3200 Chestnut St., 215.240.4577. **Map 1, D5**

KAYU—American. Healthy grain bowls, soups, sandwiches and DIY salads greet folks at this bright and friendly spot inside the 3 Logan Square building. B, L (M-F). www.kayufoods.com. 1717 Arch St., 267.639.9949. **Map 1, G4**

LA COLOMBE—Coffeshop. Founded by locals, this Euro-style cafe pours top-notch coffee following five principles: fairness, longevity, opportunity, water and strict earth consciousness. The Fishtown HQ offers a hip, warehouse-like vibe and friendly staff for relaxing with a cuppa and tucking into tasty pastries. B, L, D (daily). www.lacolombe.com. 130 S. 19th St., 215.563.0860. **\$ Map 1, G5**; 1414 S. Penn Square, 215.977.7770. **Map 1, G5**; 1335 Frankford Ave., 267.479.1600; 100 S. Independence Mall W., 267.479.1650.

LACROIX—French. Featuring sumptuous cuisine, a top-notch wine list and inviting decor, Lacroix has rightfully earned its reputation as one of the city’s best dining destinations. Reservations suggested. B, L, D, Br (daily). www.lacroixrestaurant.com. 210 W. Rittenhouse Square, 215.790.2533. **\$\$\$ Map 1, G6**

LE CHERI—Classic French. Pierre and Charlotte Calmels’ elegant Art Alliance restaurant offers Old World traditions in dishes like lamb osso bucco, poached halibut and a classic onion soup gratinée. Reservations are required for the dining rooms, but the 14-seat bar is walk-in only. D (W-Su), Br (F-Su). www.lecheriphilly.com. 251 S. 18th St., 215.546.7700. **\$\$\$-\$\$\$\$ Map 1, G6**

THE LOVE—American. Aimee Olexy and James Beard Award-winner Stephen Starr’s venture gives ample reason for falling in love, from the tasty fare to the cozy bar and dimly lit dining room. Stop in for a cocktail with clever names like “A Very Good Bourbon Drink,” mixing Jim Beam Black with Gran Classico Bitter, Iris vermouth and apple cider. Move on to dinner with approachable, yet creative dishes like whole smoked trout with kale, maple farro and spicy pecans. Groups of up to 20 spread

the good vibes around a country-style communal table in the upstairs loft. L (M-F), D (daily), Br (Sa-Su). www.theloverestaurant.com. 130 S. 18th St., 215.433.1555. **\$\$\$ Map 1, G5**

MARATHON GRILL—American. Popular with the downtown work crowd, families and ladies who lunch, this casual spot features all day breakfast, “Control Freak” salads, great grilled items, burgers and smoothies. Hours vary by location. www.marathongrill.com. 121 S. 16th St., 215.569.3278. **\$\$ Map 1, H5**; 1818 Market St., 215.561.1818. **Map 1, G5**; 1839 Spruce St., 215.731.0800. **\$\$ Map 1, G6**

OCEAN PRIME—Seafood & Steak. Most of the dishes on the seafood-forward menu at this splashy outpost from restaurateur Cameron Mitchell are made from scratch. Don’t miss the restaurant’s famous 10-layer carrot cake or something from the Wine Spectator Award-winning wine collection and signature cocktail list. D (daily). www.ocean-prime.com. 124 S. 15th St., 215.563.0163. **\$\$\$\$ Map 1, H5**

PARC—French. From Philly restaurateur Stephen Starr comes this see-and-be-seen brasserie overlooking Rittenhouse Square. Classic fare, decor (a zinc bar, vintage photos), lively sidewalk tables and a chic crowd give this spacious restaurant endless appeal. B, L, D (daily), Br (Sa-Su). www.parc-restaurant.com. 227 S. 18th St., 215.545.2262. **\$\$ Map 1, G6**

PLENTY CAFE—Cafe, Restaurant & Bar. This “Best of Philly” European-style spot offers a Pinterest-worthy backdrop for tucking into a menu that trots the globe. Dishes include Spanish frittata and shakshuka, plus breakfast all day. Caffeine fiends will be pleased to find a java program that partners with Square One Coffee, pouring single-origin nitros, cold brews and even a seasonal coffee soda on tap. Beer, wine, cocktails. B, L, D (daily). www.plentyphiladelphia.com. 1602 Spruce St., 215.560.8684. **\$-\$\$ Map 1, H6**; 1710 E. Passyunk Ave., 267.909.8033; 705 S. Fifth St., 267.758.6791.

POI DOG—Hawaiian. This former food truck now calls a brick-and-mortar storefront home for serving Hawaiian comfort foods with a modern twist. Dig into lighter fare like tuna poke with macadamia nuts and Spam musubi, or stick-to-your-bones plates of kalua pig, mochi nori fried chicken or pork belly adobo with macaroni salad and white rice. Sweet endings include bibinka (Filipino coconut cake with guava caramel), andagi (Okinawan donuts) and butter mochi. L, D (M-Sa). www.poidogphilly.com. 102 S. 21st St., 215.279.7015. **\$ Map 1, F5**

THE PRIME RIB—Steak. This “civilized” supper club serves acclaimed USDA prime cuts, seafood that’s flown in daily and wines from a top-notch list. The sophisticated dining room takes diners back to the 1940s, with live piano nightly in the romantic, dimly lit lounge. D (daily). www.theprimrib.com. 1701 Locust St., 215.772.1701. **\$\$\$ Map 1, G6**

PUB & KITCHEN—Contemporary European. Opened in 2008, Pub & Kitchen combines the sophistication of contemporary European cuisine with the comfort and warmth of an authentic neighborhood tavern. With a frequently changing menu and an extensive list of spirits, beer and wine, Pub & Kitchen is a casual and energetic space where well-crafted food and drink go hand-in-hand. D (daily), Br (Sa-Su). [# THIS IS HOW IT’S DONE](http://www.thepuband</p></div><div data-bbox=)



Jim's South St.
PHILADELPHIA

STEAKS & HOAGIES

215.928.1911 • 4TH & SOUTH ST. • PHILADELPHIA • JIMSSOUTHSTREET.COM

JIMSSOUTHSTREET @JIMSSOUTHSTREET #JIMSSOUTHSTREET

OPEN EVERY DAY ‘TIL LATE

READING TERMINAL MARKET
12th & Arch Streets
Philadelphia, PA 19107
125 YEARS
SHOP LOCAL
A PHILADELPHIA TRADITION
Discover the diversity of fresh and prepared foods available at the Market. From Amish made breakfasts to international cuisines- we've got something for everyone's appetite.
Diverse. Charming. Inspiring. Delicious.
Shop Reading Terminal Market. All under one roof.
Open Every Day from 8 AM - 6 PM
215-922-2317 • ReadingTerminalMarket.org
 RdtTerminalMkt #LoveRTM #RTMeat



kitchen.com. 1946 Lombard St., 215.545.0350. **\$\$\$ Map 1, G6**

R2L—American. Located on the 37th floor of Two Liberty Place, chef Daniel Stern’s restaurant offers modern twists on traditional American flavors. The stunning skyline views make this spot one of Philly’s most spectacular dining destinations. D (daily). www.r2lrestaurant.com. 50 S. 16th St., 37th floor, 215.564.5337. **\$ Map 1, H5**

SCARPETTA—Modern Italian. The Rittenhouse Hotel’s James Beard-nominated restaurant offers a sophisticated wine cellar-like dining room for indulging in upscale Italian cuisine made with local ingredients. Expect house-made pastas, like the restaurant’s signature, tomato and basil spaghetti, plus dishes like Niman Ranch porterhouse lamb. Extensive wine list, distilled spirits, cocktails and beer. D (daily). www.scarpettarestaurants.com/philadelphia. 210 W. Rittenhouse Square, 215.558.4199. **\$\$\$-\$\$\$\$ Map 1, G6**

SEAFOOD UNLIMITED—Seafood. Located just off of Rittenhouse Square, this intimate neighborhood favorite specializes in simply prepared fresh fish and seafood selections. D (M-Sa). www.seafoodunlimited.com. 270 S. 20th St., 215.732.3663. **\$\$\$ Map 1, G6**

SNAP KITCHEN—American. This Texas-based fast-casual spot offers healthy takes on favorites, with most entrees under 500 calories. Also here, a full line of cold-pressed juices and snacks. B, L, D (daily). www.snapkitchen.com. 1901 Chestnut St., 215.845.0002. **\$ Map 1, G5**; 601 S. 10th St., 215.845.0027. **Map 1, I7**; 1325 Frankford Ave., 267.838.6590; 243 Market St., 215.845.0004. **Map 2, D5**

SOUTH—American. Diners here can choose from three distinct areas: an elegant dining hall, a convivial bar/lounge and a lively jazz parlor hosting top acts six nights a week. As the name suggests, the menu tips its hat to the American South, but with modern flair in dishes like Cajun shrimp deviled eggs, fried catfish and grits and a veggie jamabala. D (Tu-Su), Br (Su). www.southrestaurant.net. 600 N. Broad St., 215.600.0220. **\$\$\$ Map 1, H2**

SQUARE 1682—International. Chef Bobby Surdam serves up creative, flavorful combinations at Square 1682, located adjacent to the stylish Hotel Palomar. You’ll find shareable plates and a vibe that blends casual and cosmopolitan into a distinctly cool dining experience. And when you’re on the go, try the seasonal lunch menu with express options that are quick and delicious. B, L (M-F), D (daily), Br (Sa-Su). www.square1682.com. 121 S. 17th St., 215.563.5008. **\$ Map 1, G5**

SQUARE ONE COFFEE—Coffee. This award-winning micro-roaster based out of Lancaster now has two retail locations in the city. The small, family-owned business takes pride in taking a small batch, handcrafted approach to roasting, and it shows in the coffeehouses offerings. Hours vary by location. www.squareonecoffee.com. 1811 John F. Kennedy Blvd., 267.930.8654. **\$ Map 1, G4**; 249 S. 13th St., 267.758.6352. **Map 1, I6**

SUGA BY SUSANNA FOO—Chinese. Two-time James Beard Award-winning chef Susanna Foo’s venture uses farm-fresh ingredients with fine-dining techniques in dishes like tea-smoked Peking duck breast with farro risotto and Mandarin pork pasta. L, D (daily), Br (Sa-Su). www.sugabyfoo.com. 1720



Sansom St., 215.717.8968. \$\$\$-\$\$\$\$
Map 1, G5

URBAN FARMER—Steak House. On historic Logan Square, this modern steakhouse takes pride in using locally sourced ingredients in straightforward preparations. B, L, D (daily), brunch (Sa-Su). www.urbanfarmerphiladelphia.com. 1850 Benjamin Franklin Parkway, 215.963.2788. \$\$\$\$ Map 1, G4

VEDA—Indian. This dining room sets an elegant tone for a menu of Northern Indian food with a modern, bistro touch. The menu includes small plates like masala crab cakes and scallops dressed in a roasted pepper chutney. Mains include familiar favorites, plus out-of-the-box options like a curry with tofu and peas. A selection of tandoori meats and roti breads rounds out the tasty offerings, with a full bar pouring wine, beer and craft cocktails. L (M-F), D (daily) Br (Sa-Su). www.vedaphilly.com. 1920 Chestnut St., 267.519.2001. \$ Map 1, G5

VIC SUSHI—Sushi. This no-frills BYOB plates classic crowd-pleasers like Philadelphia and California rolls, along with inventive house specials and delicious tuna dumplings. L, D (M-Sa). www.vic-sushi.com. 2035 Sansom St., 215.564.4339. \$ Map 1, G5

Chinatown

NAN ZHOU HAND DRAWN NOODLE HOUSE—Chinese. As the name suggests, folks come here for the handmade noodles in savory soups, but the restaurant also dishes out plenty of other delicious dishes from freshly made dumplings to mapo tofu, making it a must-stop in Chinatown. BYOB. Cash only. L, D (daily). www.nanzhounoodlehouse.com. 1022 Race St., 215.923.1550. \$ Map 1, J4

SANG KEE PEKING DUCK HOUSE—Chinese. Since 1980, Sang Kee has been a destination for authentic Hong Kong-style Chinese cuisine, including Peking duck and spot-on wonton soup. Three floors of seating ensure any wait for a table will be minimal. L & D (daily). www.sangkeechinatown.com. 238 N. Ninth St., 215.925.7532. \$\$\$ Map 1, I4

VIETNAM RESTAURANT—Vietnamese. This beloved hole-in-the-wall eatery located in the heart of Chinatown serves authentic Vietnamese dishes at accessible prices. On the third floor is Bar Saigon, modeled after 1930s Saigon dance clubs, where guests can sing karaoke and sample delicious cocktails. L, D (daily). www.eatatvietnam.com. 221 N. 11th St., 215.592.1163. \$ Map 1, I4

Convention Center

HARD ROCK CAFE—American. Philly's outpost of the international phenomenon is located in the historic Reading Terminal train station, steps from the Convention Center and a few blocks from the historic district. Inside, the restaurant is filled with its trademark rock memorabilia, plus a gift shop of Hard Rock-branded souvenirs. On the menu, find favorites like "Legendary Burgers," steaks, salads and sandwiches. L, D (daily). www.hardrock.com. 1113-31 Market St., 215.238.1000. \$ Map 1, I4

MOLLY MALLOY'S—Pub/Bar. Nestled in the heart of the historic Reading Terminal Market, this airy gastropub from the folks behind Iovine Brothers produce serves seasonal fare from chef Bobby Fisher and pours craft beers, 35 of which are on draft. B, L, D (daily). www.mollymalloyshilly.com. Reading Terminal Market, 1136 Arch St., 267.525.1001. \$ Map 1, I4

READING TERMINAL MARKET—International. Founded in 1893, Reading Terminal Market has evolved into one of Philadelphia's major food meccas, where visitors can sample international and local specialties, including cheesesteaks and Pennsylvania Dutch treats. B, L, D (daily). www.readingterminalmarket.org. 12th and Arch streets, 215.922.2317. \$ Map 1, I4

East Passyunk Avenue

BING BING DIM SUM—Dim Sum. This spot brings a new, modern spin on the classic dim sum. Look for traditional soup dumplings alongside roast pork bao filled with sharp provolone and long hots, plus crispy lamb rolls and congee made with chicken sausage. Pair all that goodness with a shareable pitcher of cocktails. L (F-Su), D (daily). www.bingbingdimsum.com. 1648 E. Passyunk Ave., 215.279.7702. \$-\$\$

CHHAYA CAFÉ—Coffee House. This community gathering place dishes up wholesome and tasty breakfast and lunch fare, and pours some of the best brews (coffee and tea) in town. Worker bees need not worry—laptops are welcome here. B, L (daily, kitchen closes at 3 pm). www.chhayacafe.com. 1819 E. Passyunk Ave., 215.465.1000. \$

FOND—American. This intimate contemporary American restaurant is flecked with touches of chef Lee Styer's classic French training. The refined, seasonal menu might include such gems as Thai curry escargot, seared foie gras with cranberries or the delicious Beef Short Ribs with Bordelaise sauce. D (Tu-Su), Br (Su). www.fondphilly.com. 1537 S. 11th St., 215.551.5000. \$\$\$

NOORD—American. This classic BYOB bistro with a Northern European focus features locally farmed produce and meats, served in a relaxed and friendly atmosphere. Breads and desserts are made in-house, as are the smoked and cured fish and meats. All you have to do is bring the wine. D (W-Su), Br (Su). www.noordphilly.com. 1046 Tasker St., 267.909.9704. \$\$\$

PARADISO—Italian. As a key player in the burgeoning East Passyunk Avenue dining scene, Paradiso brings fresh ingredients to mouth-watering dishes. Expect hand-rolled gnocchi, Hudson Valley duck breast and whole-roasted branzino. L (Tu-F), D (Tu-Su). Sundays BYOB with no corkage fee. www.paradisophilly.com. 1627 E. Passyunk Ave., 215.271.2066. \$\$\$

STARGAZY—British. The lunch and supper (read: early dinner) crowd digs into hearty, regional British cuisine here. Pie and mash is a staple of the menu, and flavors run the gamut from traditional beef and onion to daily specials. Other house-made noshes include sausage rolls, Cornish pasties and banoffee pie. L, D (Tu-Sa), Br (Su). 1838 E. Passyunk Ave., 215.309.2761. \$\$\$

TOWNSEND—French. From broiled oysters to sauteed sweetbreads and seared duck breast, wine and food offerings follow the seasons at chef-owner Townsend Wentz's eponymous fine-dining spot, which is also known for masterful food and wine pairings. If you can't get a table, try the bar, where the full dinner menu is also available. D (W-M). www.townsendrestaurant.com. 1623 E. Passyunk Ave., 267.639.3203. \$\$\$

Manayunk

BOURBON BLUE—American. This hotspot features New American cuisine with a New Orleans accent. Dig into favorites like Southern fried chicken, jambalaya and country-style ribs. On weekends, the Canal Lounge offers live entertainment. D (daily), Br (Sa-Su). www.bourbonblue.com. Two Rector St., 215.508.3360. \$\$

JAKE'S RESTAURANT AND COOPER'S WINE BAR—American. Jake's and Cooper's are upscale-yet-comfortable spots to enjoy high-quality food and carefully selected wines. At Jake's, dig into delicious dishes like crab cakes, chicken breast stuffed with mushrooms duxelle, duck a l'orange, made with organic, locally grown ingredients. Pair entrees with wines from Cooper's top-notch collection. L, D (daily), Br (Su). www.jakesrestaurant.com. 4365 Main St., 215.483.0444. \$\$

THE JUICE MERCHANT—Health Food. Using 100 percent organic ingredients, The Juice Merchant is the go-to place for the health conscious. Looking to make health food convenient, the shop has a full menu of cold-pressed juices, smoothies and vegan salads and sandwiches. B, L, D (daily). www.thejuicemerchant.com. 4330 Main St., 215.483.8888. \$

MANAYUNK BREWERY & RESTAURANT—Pub/Bar. Start your meal with one of the brewery's hand-crafted beers made on site. The eclectic menu features stone-oven pizzas, sushi, grilled steaks, fresh salads and classic burgers. Live music daily. L, D (daily), Br (Su). www.manayunkbrewery.com. 4120 Main St., 215.482.8220. \$\$

OLD EAGLE TAVERN—Tavern. One of the best-kept secrets in Manayunk, this old world-style tavern specializes in reinvented bar fare and an extensive beer collection, including excellent crafts, 11 rotating drafts and 60-plus bottles. D (daily), Br (Sa, Su). www.oldeagletavern.com. 177 Markle St., 215.483.5535. \$\$

Midtown Village

BARBUZZO—Mediterranean. The rustic furnishings here set a cozy vibe for the Mediterranean-influenced dishes and well-stocked bar. Reserve a table for simple, yet flavorful fare, including roasted bone marrow and grilled fresh fish. L (M-Sa), D (daily). www.barbuzzo.com. 110 S. 13th St., 215.546.9300. \$\$\$ Map 1, I5

BRÜ CRAFT & WURST—German. This indoor bierhall and wursthaus serves up delicious Bavarian/American cuisine, including pork belly, weiner schnitzel, and, of course, assorted wurst. The bierhall features 39 German domestic and imported drafts on tap. For \$5, purchase a Haus key from a server or bartender and pour your own beer from a self-serve, iPad-controlled bier wall, where brews cost as little as 30 cents per ounce. L, D (daily). www.bruphilly.com. 1318 Chestnut St., 215.800.1079. \$\$\$ Map 1, I5

CAPOGIRO GELATO CAFE—Sweets. Find fine artisanal gelato and sorbetto in flavors like champagne mango, burnt sugar or Fior di Latte (made with milk sourced from a single herd in Lancaster County), plus coffee, sandwiches, soups and salads. B, L, D (daily). www.capogirogelato.com. 119 S. 13th St., 215.351.0900. \$ Map 1, I5; 117 S. 20th St., 215.636.9250. Map 1, G5; 233 Chestnut St., 215.897.9999. Map 1, B5; 1625 E. Passyunk Ave., 215.462.3790.

#EATLIKEALOCAL ...24 HOURS A DAY

GENO'S STEAKS

PHILADELPHIA ORIGINAL

WWW.GENOSSTEAKS.COM

1219 SOUTH 9TH STREET
SOUTH PHILADELPHIA

215.389.0659



ERAWAN THAI CUISINE

Celebrate
Father's Day with us
The First Thai Restaurant in Philadelphia
BYOB



3 COURSE LUNCH & DINNER
SPECIALS AVAILABLE

Dine in • Take out • Closed Monday
Free Delivery (Limited Area)

Order online, special promotions and make reservation online

123 S. 23rd Street
215.567.2542

See our website for special promotions:

www.erawanphilly.com

VIETNAM
RESTAURANT
Est. 1984

The Fine Art of
Vietnamese Home Cooking

Vietnam Restaurant
221 North 11th St.
Phila., PA 19107
215-592-1163

Vietnam Cafe
816 South 47th St.
Phila., PA 19143
215-792-0388

Ph-Sat 11 am - 10:30 pm
Sun-Thurs 11 am - 9:30 pm

Mon-Thurs 11:30 am - 8 pm
Fri 11:30 am - 9:30 pm
Sat 12 - 9:30 pm
Sun 12 - 9 pm

www.eatatvietnam.com
Delivery available through trycaviar.com

Instagram Facebook

CHEU NOODLE BAR—Asian. This cozy spot focuses on noodle bowls with a variety of ingredients. The miso ramen bowl is a favorite and comes with pork shoulder, a soft-boiled egg and black garlic. Small plates include creative (not to mention tasty) fare like black garlic wings and pork pizza dumplings. L, D (daily). www.chenoodlebar.com. 255 S. 10th St., 267.639.4136. \$-\$\$\$ Map 1, I6; 1416 Frankford Ave., 267.758.2269.

INDEBLUE—Indian. Take your taste buds on a journey at this neighborhood hot spot. Go for the maharaja cheese board, shrimp and crab moilee or try other traditional Indian dishes as well as brunch classics with an Indian spin. L (M-F), D (daily), Br (Sa-Su). www.indebluerestaurant.com. 205 S. 13th St., 215.545.4633. \$ Map 1, I5

NOMAD PIZZA—Pizza. This casual corner spot with an industrial vibe dishes up wood-fired pies with quality ingredients, many from local producers. Pair 'zas with wine or Italian sodas. Sweets fiends indulge in a Nutella pizza plus other desserts including ricotta cheesecake and artisanal sorbets. L F-Su, D (Tu-Su). www.nomadpizzaco.com. 611 S. 7th St., 215.238.0900. \$ Map 1, J7

NOMAD ROMAN—Pizza. As its name suggests, the cozier sister spot to Nomad Pizza dishes up thin-crust, Roman-style pies and highlights the same top-notch ingredients like nduja sausage, prosciutto di Parma, truffles and Castelvetro olives. For a spin on a regional classic, try the Trenton tomato pie, an "upside down pizza" twist. www.nomadpizzaco.com. 1305 Locust St., 215.644.9287. Map 1, H6

SAMPAN—Pan-Asian. This 95-seat gem showcases chef Michael Schulson's passion for Asian flavors and exquisite presentations. Mix and match from the array of reasonably priced small plates at dinner and happy hour. Head around back to the Graffiti Bar for cocktails. D (daily). www.sampanphilly.com. 124 S. 13th St., 215.732.3501. \$ Map 1, I5

STRANGELOVE'S—American. This 20-tap, two-floor restaurant craft beer destination serves up inspired vegetarian, vegan and omnivore-friendly fare. L, D (daily), Br (Sa-Su). www.strangelovesbeerbar.com. 216 S. 11th St., 215.873.0404. \$ Map 1, I5

TREDICI ENOTECA—Mediterranean. This lovely dining room focuses on small plates like bacon wrapped dates stuffed with manchego and blue cheese and chicken meatballs. Also on the menu find a raw bar plus spinach gnocchi with butternut squash and brown butter and Moroccan-spiced ribs in addition to an extensive wine list and housemade cocktails. L, D (daily). www.tredicienoteca.com. 114 S. 13th St., 267.928.2092. Map 1, I5

Northern Liberties & Fishtown

CAKE LIFE BAKE SHOP—Bakery. The duo behind this all-day cafe and bake shop claims a "Cupcake Wars" victory. In addition to top-notch cupcakes, look for sweet and savory pastries and cakes (by the slice). The cafe also serves Rival Bros. coffee and has a BYOB policy. B, L (Tu-Su), D (Tu-Sa). www.cakelifebakeshop.com. 1306 Frankford Ave., 215.278.2580. \$





FRANKFORD HALL—German. This open-air German beer garden may be the liveliest spot in Stephen Starr's empire. Counter service, long communal tables and alfresco ping-pong create a down-to-earth backdrop for enjoying huge steins of traditional German and craft beers. Fill up on casual fare like sauerkraut, schnitzel, spaetzle, bratwurst, weisswurst and käsekrainer. L (Sa-Su), D (daily). www.frankfordhall.com. 1210 Frankford Ave., 215.634.3338. \$ **Map 1, L1**

FRONT STREET CAFE—American. Health-conscious, on-trend dishes are on the menu at this light-filled, rustic-chic spot that aims to satisfy all needs with a sit-down restaurant, coffee shop, juice/smoothie bar, beer garden, outdoor terrace and even two full bars. Try acai breakfast bowls, turkey burgers, kale Caesar salads, tostada grain bowls, blackened culotte steak and spaghetti squash with lentil meatballs. B, L, D (daily). www.frontstreetcafe.net. 1253 N. Front St., 215.515.3073.

LOVE & HONEY FRIED CHICKEN—American. Todd and Laura Lyons' temple to fried chicken offers locally sourced, humanely raised and processed birds (read: no antibiotics or hormones). The result is back-to-basics good food with fixins' including mac and cheese, cornbread muffins and potato salad. Save room for pie (sweet potato, banana pudding, flavor of the month). L, D (W-Su). www.loveandhoneyfriedchicken.com. 1100 N. Front St., 215.789.7878. **Map 1, L1**

PIZZA BRAIN—Pizza. This socially and environmentally aware pizza shop is the world's first pizza museum and has a claim to fame in the Guinness Book of World Records with the largest stock of pizza memorabilia. The restaurant also features vegan options and delivery. L, D (daily). www.pizzabrain.org. 2313 Frankford Ave., 215.291.2965. \$

WM. MULHERIN'S SONS—Italian. Set in a restored 1890s whiskey blending and bottling facility, this well-regarded spot serves hearty Italian classics, wood-fired pizzas and strong drinks. The restaurant has three rustic, yet beautiful rooms: a bar, a dining room with a fireplace and a second dining room featuring an open kitchen with a wood-fired oven and grill, so you can watch the magic as you eat. D (daily), Br (Sa-Su). www.wmmulherinssons.com. 1355 N. Front St., 267.291.1355. \$\$\$

Old City

DINARDO'S FAMOUS SEAFOOD—Seafood. This family-owned seafood house is an Old City institution, serving up outstanding steamed hard-shell crabs and sautéed garlic crabs since 1976. Grilled steaks, chicken and fresh pasta are also featured. L (M-Sa), D (daily). www.dinardos.com. 312 Race St., 215.925.5115. \$\$\$ **Map 1, K4**

FEZZIWIG'S SWEET SHOPPE—American. This charming eatery located near all the sites combines an old fashioned ice cream parlor/sweet shop with a classic soda fountain and a modern cafe. In addition to delectable desserts and pastries, find savory treats including burgers, cheesesteaks and hand-cut fries. B, L, D (daily). www.fezziwigsphiladelphia.com. 267.457.3608. \$ **Map 2, D4**

FORK—American. One of Old City's original restaurant pioneers, Fork offers simple elegance with an open kitchen. Menu changes often. D (daily), Br (Su). www.forkrestaurant.com. 306 Market St., 215.625.9425. \$\$\$ **Map 1, K5**

take your best shot.



Specializing in California-style burritos
featuring fresh ingredients in sumptuous
portions at affordable prices.

Lunch and Dinner
BYOB

el fuego

723 Walnut Street • 215.592.1931
Facebook.com/elfuegoburritosphilly
www.elfuegophilly.com

HAN DYNASTY—Chinese. This neighborhood favorite never ceases to charm, either with its marketing wit or its spice-laden menu. Dishes here come with a spice-level point system from 1 (doable) to 10 (mind-blowingly hot). Locals know to take the owner's advice, whenever it's offered. L, D (daily). www.handydynasty.net. 123 Chestnut St., 215.922.1888. \$ **Map 1, L5; 3711** Market St., 215.222.3711. **Map 1, C5; 4356** Main St., 215.508.2066.

THE OLDE BAR—Seafood. This Jose Garces spot respects tradition with seafood and standouts like oyster po'boy and Olde Bar fries with crab, lobster butter and oyster stout-cheddar fondue. D (daily). www.theoldebar.com. 125 Walnut St., 215.253.3777. \$\$

ROYAL BOUCHERIE—French. "Top Chef" winner Nicholas Elmi's butchery fits right in with Old City's historical vibe. The cozy two-level space features two bars (one for drinks and the other for oysters) with exposed brick walls, a tin ceiling and antique furnishings. But the mood is anything but dusty. Diners dig into hearty dishes like lamb crepinette and steak au poivre in stick-to-your-ribs portions, while a feel-good soundtrack veers from Ella Fitzgerald to Stevie Wonder and Arcade Fire. Cocktail connoisseurs find classics and contemporary choices, while oenophiles look to a Euro-heavy list. D (daily). www.royalboucherie.com. 52 S. Second St., 267.606.6313. \$\$\$ **Map 1, K5**

ZAHAV—Middle Eastern. At his heralded restaurant perched above the street, James Beard Award-winning chef Michael Solomonov carefully prepares creative, contemporary Israeli food. A well-edited a la carte menu highlights small plates and salatim—a colorful collection of cold salads that traditionally start meals in Israel. The "Tayim" tasting option offers a good base for those new to the cuisine and includes Solomonov's famous hummus (we like the Turkish variety, which is served warm in its own mini cast-iron pan) and feather-light laffa bread. Heftier fare includes coal-fired kebabs and a hangar steak. Inventive cocktails; wine list with Israeli varietals. Reservations recommended. D (daily). www.zahavrestaurant.com. 237 St. James Place, 215.625.8800. \$\$ **Map 1, K6**

Penn's Landing & Waterfront

CHART HOUSE—Seafood. Waterfront views of Penn's Landing, the Delaware River and the Philadelphia skyline set a dramatic stage for updated classic steaks and seafood entrées, along with renowned prime rib specials. D (daily), Br (Su). www.chart-house.com. 555 S. Columbus Blvd., 215.625.8383. \$ **Map 1, L7**

HUGO'S FROG BAR AND CHOP HOUSE—Steakhouse. Treat yourself to an authentic Chicago dining experience, which includes USDA Gibsons Prime Angus Beef as well as other favorites like fresh fish and seafood, salads and sandwiches. An extensive wine list, waterfront views and live entertainment add to the special vibe. Inside Sugar House Casino. L, D (daily). www.sugarhousecasino.com/dining/hugo's-frog-bar-chop-house. 1001 N. Delaware Ave., 215.717.3900. \$\$\$\$ **Map 1, L1**

KEATING'S ROPE & ANCHOR, BAR + KITCHEN—Contemporary American. Spend an afternoon on the patio Hilton's Penn's Landing outpost, tucking into oak-smoked salmon or a New York

strip steak while gazing out at the Delaware River. Inside, a buzzy bar pours handcrafted cocktails to the tunes of a live band. B, L, D (daily). www.ropeandanchorkitchen.com. 201 S. Columbus Blvd., 215.521.6509. \$\$\$ **Map 1, L5**

LA PEG—French. This contemporary French brasserie and beer garden is located inside the FringeArts building along the Delaware River Waterfront. The crowd-pleasing menu features cauliflower steak and steak frites, butternut squash soup and cheeseburgers. D (daily), Br (Sa-Su). www.lapegbrasserie.com. 140 N. Columbus Blvd., 215.375.7744. \$ **Map 1, L4**

South Philly & Italian Market

AMERICAN SARDINE BAR—Pub/Bar. From the owners of the South Philly Tap Room comes ASB, a resto-bar with a menu that focuses on a selection of craft beers (16 on tap), hearty sandwiches and yummy pub grub. L, D (daily) Br (Su). www.americansardinebar.com. 1800 Federal St., 215.334.2337. \$

FEDERAL DONUTS—Sweets. James Beard Award-winner Michael Solomonov's little gem offers fresh cake donuts at 7 am, and then serves Korean-style fried chicken starting at 11 am until they run out. Hours vary by location. www.federaldonuts.com. 1219 S. Second St., 267.687.8258; 1632 Sansom St., 215.665.1101. **Map 1, H5**

GENO'S STEAKS—Cheesesteaks. Geno's serves up classic steaks with Philly flair. The inevitable line provides time to figure out what to order; when you get to the counter, make it fast and simple. Cash only. B, L, D (daily, 24 hours). www.genossteaks.com. 1219 S. Ninth St., 215.389.0659. \$

JIM'S SOUTH STREET—Cheesesteaks. Since 1976, visitors and locals alike have been flocking to this temple to cheesesteak inside an Art Deco storefront on lively South Street. Hoagies, too. L, D (daily). www.jimssouthstreet.com. 400 South St., 215.928.1911. \$ **Map 1, K7**

PAT'S KING OF STEAKS—Cheesesteaks. Billed as the originator of the cheesesteak sandwich, this shop is a favorite that attracts fans from around the world. Local tip: Order "Whiz wit." B, L, D (daily 24 hours). www.patskingofsteaks.com. 1237 E. Passyunk Ave., 215.468.1546. \$

South Street & Queen Village

BISTROT LA MINETTE—French. Chef/owner Peter Woolsey has created an authentic French bistro that reflects his passion for detail—even the original art and furnishings evoke the flavor of France's celebrated culinary regions. D (daily), L (Sa-Su) www.bistrotlaminette.com. 623 S. Sixth St., 215.925.8000. \$ **Map 1, J7**

BRAUHAUS SCHMITZ—German. This Philly original claims the largest selection of German beer in the city with 30 on draft and more than 80 bottles from 25 countries. Executive chef Jeremy Nolen prepares classic German fare like housemade bratwurst, schweinshaxen and schnitzel. L, D (daily). www.brauhauschmitz.com. 718 South St., 267.909.8814. \$-\$\$ **Map 1, J7**

ELA—American. The kitchen at this bar and restaurant is run by chef Jason Cichonski and features an inventive, rotating menu, an extensive wine and beer program and an inspired cocktail list. The modern yet rustic setting allows diners a comfortable place to enjoy seriously good food. D

(daily), Br (Su). www.elaphilly.com. 627 S. Third St., 267.687.8512. \$ **Map 1, K7**

LAS BUGAMBILIAS—Mexican. At this intimate, authentic Mexican restaurant, chef/owner Carlos Molina offers high-quality, freshly prepared food from three different regions in Mexico. Be sure to sample the imaginative array of margaritas and the homemade desserts. L (Tu-Su), D (daily), Br (Su). www.lasbugambiliaphilly.com. 148 South St., 215.922.3190. \$ **Map 1, L7**

THE TWISTED TAIL—American. A lively bourbon- and-blues emporium featuring a menu of charcoal-grilled fare, 40-plus bourbons and plenty of craft beer. Dine at rustic wooden table indoors or out, then climb the stairs for some rockin' live music. L (M-F), D (daily), Br (Sa-Su). www.thetwistedtail.com. 509 S. Second St., 215.558.2471. \$ **Map 1, K6**

University City

MARIGOLD KITCHEN—American. Located inside a traditional Victorian row house, this restaurant features the culinary alchemy of Andrew Kochan and Tim Lanza. Each build tasting menus meant to "surprise," with dishes drawing from the seasons, that are as beautiful to look at as they are tasty to eat. D (Tu-Sa). www.marigoldkitchenbyob.com. 501 S. 45th St., 215.222.3699. \$ **Map 1, A7**

VIETNAM CAFE—Vietnamese. With this small but sleek outpost of Chinatown's popular Vietnam Restaurant, owner Benny Lai has brought his beloved Vietnamese cuisine to the University City neighborhood. Expect savory noodle soups and dishes, seafood, rice platters and the chef's special barbecued appetizer sampler. L, D (daily). www.eatvietnam.com. 816 S. 47th St., 215.729.0260. \$\$

WHITE DOG CAFE—American. This homey, antiques-filled dining room is as well known for its food as it is for its social activism. Dine on classic dishes made from locally grown and organic ingredients, like chicken liver mousse, soups and sandwiches, and omelets made with cage-free eggs. L (M-F), D (daily), Br (Sa-Su). www.whitedog.com. 3420 Sansom St., 215.386.9224. \$-\$\$ **Map 1, D5**

Washington Square

AMIS—Italian. At this convivial trattoria (one of three Philadelphia eateries by celebrated Chef Marc Vetri), dig into tapas-style fare like bone-in strip steak, pork chop parmigiana and monkfish caciatiore. D (daily), Br (Su). www.amisphilly.com. 412 S. 13th St., 215.732.2647. \$\$\$ **Map 1, I6**

EL FUEGO—Mexican. This happening spot whips up tasty "California-style" burritos, along with tacos, quesadillas and soups. The lunch hour is particularly lively, so get there early. L, D (M-Sa). www.elfuegophilly.com/. 723 Walnut St., 215.592.1931. \$ **Map 1, J5**

VEDGE—Vegan. Husband-and-wife team Richard Landau and Kate Jacoby give vegan cuisine a good name at their inventive, modern bistro inside a handsome row house. In the chef's deft hands, roots and leaves become the stuff of haute cuisine in dishes like "seared maitake mushroom" with celery root fritter, smoked remoulade and leek ash vinaigrette. Cocktails with housemade syrups and bitters are also musts. Reservations required. D (M-Sa). www.vedgerestaurant.com. 1221 Locust St., 215.320.7500. \$\$\$ **Map 1, I6**





Entertainment | June



Time

This groovy three-in-one features a chandeliered lounge, a cozy whiskey bar and a dance club reminiscent of the absinthe-fueled hangouts of old Paris. Catch Trombo Piccolo with Chris Farrel and Company every Monday and Midtown Jazz Jam with Tim Brey every Sunday. www.timerestaurant.net. 1315 Sansom St., 215.985.4800. Map 1, H5



Bryn Mawr Film Institute

Located along the picturesque main drag in Bryn Mawr, the BMFI is a beloved theater showcasing independent movies in the Philadelphia area. Film screenings here range from documentary, international arthouse, classics and vintage flicks. www.brynmawrfilm.org. 824 W. Lancaster Ave., Bryn Mawr, Pa., 610.527.9898.



The Trestle Inn

At this lively club just north of Chinatown, partiers sip classic cocktails or a whiskey from a 60-bottle collection and nibble retro bar snacks before hitting the dance floor. Energetic go-go dancers keep the party going, shaking it to everything from soul and funk to disco. www.thetrestleinn.com. 339 N. 11th St., 267.239.0290. Map 1, I3

Bars & Lounges

ABBAYE—Locals will greet you with open arms in this homey Northern Liberties corner bar. Come for the music, cheesesteaks and fine Belgian beer. M-F 11:30 am-2 am, Sa-Su 10 am-2 am. www.theabbaye.net. 637 N. Third St., 215.627.6711. Map 1, K2

ASHTON CIGAR BAR—Enjoy the vast selection of 200 different cigars and an extensive bar list including wines, cordials and rare liquors at the only cigar bar open to the public in the city, complete with a state-of-the-art air purification system. Sa-Th 4 pm-2 am, F 2 pm-2 am. www.ashtoncigarbar.com. 1522 Walnut St., 2nd floor, 267.350.0000. Map 1, H6

BARBARY—Dance the night away with great DJs, cheap drinks and disco lights, or take a break from all the action in the bar's cozy photo booth. Daily 10 pm-2 am. www.barbarylive.com. 951 Frankford Ave., 215.634.7400. Map 1, L1

CONSHOHOCKEN BREWING COMPANY—This brewpub in the Main Line features 10 taps and one cask line. Grab a pint of the core brew, Conshohocken IPA, while munching on affordable bar snacks. M-W 4-10 pm, Th 3-10 pm, F 2 pm-midnight, Sa 11 am-midnight, Su 11 am-8 pm. www.conshohockenbrewing.com. 739 East Elm St., Suite B, Conshohocken, 610.897.8962.

FADO IRISH PUB—This comfortable pub offers an escape to Victorian-era Dublin with nooks that seat from two to 12 people, plus fine Irish and European

beers, a packed dance floor on the weekend and regular screenings of soccer matches. M-F 11:30 am-2 am. Times vary on weekends depending on matches; Sa until 2 am, Su until midnight. www.fadoirishpub.com/philadelphia. 1500 Locust St., 215.893.9700. Map 1, H6

THE FRANKLIN BAR—Venture into this subterranean speakeasy located inside the former Franklin Mortgage & Investment Co. (a front for one of the largest booze running rings during Prohibition) for carefully crafted cocktails mixed with premium, seasonal and homemade ingredients. Daily 5 pm-2 am. www.thefranklinbar.com. 112 S. 18th St., 267.467.3277.

THE GASLIGHT—This casual, comfortable bar and restaurant is located in Philadelphia's historic district, serving a sophisticated take on pub grub. Look for happy hour specials during the week and a tasty brunch (and live entertainment) on weekends. Extensive beer list. M-Th 4 pm-midnight, F 4 pm-2 am, Sa 10-2 am, Su 10 am-midnight. www.thegaslightphilly.com. 120 Market St., 215.925.7691. \$\$ Map 1, K5

GRACE TAVERN—This low-key neighborhood spot offers comfort foods like burgers, sandwiches and bar snacks (think chicken fingers), plus some vegan options. The beer list is wide with several ciders and sour ales, too. Daily 11:30 am-2 am. www.gracetavern.com. 2229 Grays Ferry Ave., 215.893.9580. Map 1, F7

There's a lot more going on this June. Visit us online: wheretraveler.com

JOLLY'S DUELING PIANO BAR—American. Founded by Jolly Weldon, this rollicking piano bar features, yes, two instruments with pianists duking it out with musical selections from rock, pop and more. Pizzas provide sustenance for all-night singalongs with craft beers and specialty cocktails fueling the fun. D (daily). www.jollysduelingpiano.com. 215.238.1333. \$\$ Map 2, E6

KHYBER PASS PUB—Settle in at one of the well-worn booths or at the bar in this no-frills pub for excellent Southern-style comfort food. The nearly 20 craft beers on tap rotate constantly and endless bottle choices hail from around the world. Daily 10 am-2 am. www.khyberpasspub.com. 56 S. Second St., 215.238.5888. Map 1, K5

KITE & KEY—This lively gastropub in the Fairmount neighborhood pours mostly local brews for a crowd of young professionals. Service here is fast and friendly. Daily 11 am-2 am. www.thekiteandkey.com. 1836 Callowhill St., 215.568.1818. Map 1, G3

LOCAL 44—Grab a drink at the 20-tap bar or a bite at the restaurant, and then shop more than 500 bottles of craft beer, including a well-stocked rare and limited edition library. M-F 11:30 am-2 am, Sa-Su 11 am-2 am. www.local44beerbar.com. 4333 Spruce St., 215.222.2337. Map 1, A6

LONDON GRILL—London Grill is a Fairmount institution, located steps from historic Eastern State Penitentiary. For years, its dark wood bar has hosted locals looking for sophisticated bar fare. Look for

(FROM LEFT) COURTESY VISIT PHILADELPHIA; ©BART EVERSON/FICKR; CREATIVE COMMONS; ©M. KENNEDY/VISIT PHILADELPHIA®

BIG BANDS & BIG HITS



Rock out to the hottest acts at the new Xcite Center.

Try your luck at any one of our 3,300 slots.

You'll have a night to remember at Parx.

The best is better than ever.

parxcasino.com

parx
casino

What a night!

Street Road Exit off I-95 or PA Turnpike

GAMBLING PROBLEM? CALL 1.800.GAMBLER



FUN LOVERS Can't get enough after-hours excitement? For more bars, clubs, live music shows and theater, visit www.wheretraveler.com/Philadelphia.



events, like weekly quiz nights. M 4 pm-2 am, Tu-F 11 am-2 am, Sa-Su 10 am-2 am. [www.londongrill.com](#). 2301 Fairmount Ave., 215.978.4545. **Map 1, F2**

MCGILLIN'S OLD ALE HOUSE—Opened in 1860, this historic taproom is Philly's oldest tavern and claims the city's first liquor license. Locals and visitors head here for the friendly crowd, hearty pub fare and 30 draft beers. Daily 11 am-2 am. [www.mcgillins.com](#). 1310 Drury St., 215.735.5562. **Map 1, I5**

THE NAUTI MERMAID CRAB HOUSE AND PIANO BAR—Jolly Weldon's sister spot to Jolly's Dueling Piano Bar combines all the rollicking singalong action with a classic Maryland crab house dining experience to boot. Dig into oysters, Maryland crab cakes, Chesapeake pan-roasted rockfish, "boardwalk" fries and more, then join in the live music fun every night starting at 8 pm. Open daily. [www.nautimermaidphilly.com](#). 110 Chestnut St., 215.238.0333. **Map 2, E6**

SOUTHWARK—For Old World style and some of the best classic cocktails in town, come to this gem of a bar right off of South Street. W-M 5 pm-2 am. [www.southwarkrestaurant.com](#). 701 S. Fourth St., 267.930.8538. **Map 1, K7**

STANDARD TAP—This old school two-story bar, built by a former Sam Adams brewmaster, has all the cozy pub charm with the full menu of a proper restaurant. A rotating roster of more than 20 locally produced beers and chalkboards dispersed throughout display the daily creations of chef Joel Mazigian, whose repertoire includes terrines, wild game entrees and decadent desserts. M-F 4 pm-2 am, Sa-Su 11 am-2 am. [www.standardtap.com](#). 901 N. Second St., 215.238.0630. **Map 1, K1**

TIR NA NOG—This lively spot brings Ireland to Philly with an ambience that evokes the Emerald Isle. Join locals for happy hour and watch European football on the big-screen, while sipping expertly poured Guinness, naturally. M-F 11 am-2 am, Sa-Su 8 am-2 am. [www.tirnanogphilly.com](#). 1600 Arch St., 267.514.1700. **Map 1, H4**

VESPER—The formerly private Vesper Club has reopened as a restaurant and lounge with a speakeasy vibe, serving up toasts, tastes and steak dinners. At the bar, classic cocktails are on the menu, from the negroni to the French 75. Live and local music command attention seven nights a week in the Skyline Room. M-F 3:30 pm-2 am, Sa 5 pm-2 am. [www.vesperphilly.com](#). 223 Sydenham St., 267.603.2468. **Map 1, H5**

VINTAGE—This gorgeous Midtown Village wine bar has an impressive list of reds, whites and everything in between. It's vino without the pretension. M-F 4 pm-2 am, Sa-Su noon-2 am. [www.vintage-philadelphia.com](#). 129 S. 13th St., 215.922.3095. **Map 1, I5**

XLOUNGE—This ultramodern spot is the jewel of the major expansion at sprawling Parx Casino in Bucks County. Cushy seating, luxury finishes and additional gaming opportunities occupy the airy space. Have a signature cocktail like the Amigas Paloma and a few of the small plates (think edamame truffle potato dumplings or fish tacos) before you head back to the tables. Th 4-10 pm, F 4 pm-2 am, Sa 2 pm-2 am, Su noon-9 pm. [www.parxcasino.com/xlounge](#). 2999 Street Road, Bensalem, Pa., 888.588.7279. **Map 4, C3**

Bowling

LUCKY STRIKE LANES—Hollywood's über-cool bowling lounge makes its way east. This stylish Center City spot features '50s décor, comfort food, delicious cocktails and plenty of lanes to roll. M-Th 11:30 am-midnight, F till 2 am, Sa noon-2 am, Su noon-midnight. [www.bowlluckystrike.com](#). 1336 Chestnut St., 215.545.2471. **Map 1, I5**

NORTH BOWL LOUNGE 'N' LANES—Northern Liberties catches onto the contemporary bowling craze with this retro alley. Bowl downstairs in the Pop-modern alley and then relax post pins with a drink in the second-floor lounge. North Bowl also offers billiards and classic arcade games. M-F 5 pm-2 am, Sa-Su noon-2 am. [www.northbowlphilly.com](#). 909 N. Second St., 215.238.2695. **Map 1, K1**

Casinos

PARX CASINO—Located about 20 miles north of Center City by way of Interstate 95 or the Pennsylvania Turnpike, Parx is worth the trip. This 150,000-sq.-ft. venue boasts 3,330 slot machines, 132 live table games, a 48-table poker room and a variety of restaurants and bars, plus thoroughbred horse racing at Parx Racing and a new 1,500-seat entertainment venue called Xcite Center. Complimentary parking. Daily 24 hours. [www.parxcasino.com](#). 2999 Street Road, Bensalem, Pa., 888.588.7279. **Map 4, C3**

SUGARHOUSE CASINO—Wager on having a fantastic time at this 45,000-square-foot casino on the Delaware River waterfront in the Fishtown neighborhood. The huge gaming floor offers slots, as well as live table games such as craps, blackjack and poker. On-site dining, free parking and valet available. Daily 24 hours. [www.sugarhousecasino.com](#). 1001 N. Delaware Ave., 877.477.3715. **Map 1, L1**

VALLEY FORGE CASINO—This casino about 30 minutes beyond Philly city limits boasts more than 600 slot machines, along with 50 table games, including blackjack, craps and roulette. On-site dining and nightlife options range from fine steak at Revolution Chop House to live entertainment at The Vault. Accessible from Routes 202, Interstate 76 and the Pennsylvania Turnpike. Daily 24 hours. [www.vfcasino.com](#). 1160 First Ave., King of Prussia, Pa., 610.354.8118.

Classical & Opera

KIMMEL CENTER FOR THE PERFORMING ARTS—

This elegant entertainment complex houses multiple stages in the hub of Philadelphia's Avenue of the Arts. This month: Philadelphia International Festival of the Arts, **June 1-10**; Philadelphia Youth Orchestra 78th Annual Festival Concert **June 10**. [www.kimmelcenter.org](#). 300 S. Broad Street, 215.670.2300. **Map 1, H6**

MANN CENTER FOR THE PERFORMING ARTS—

Located just outside downtown Philadelphia, during the summer this open-air theater hosts world-class performers of all genres. This month: "Jaws" in Concert with the Chamber Orchestra of Philadelphia, **June 2**. [www.manncenter.org](#). 5201 Parkside Ave., 215.878.0400. **Map 1, A3**

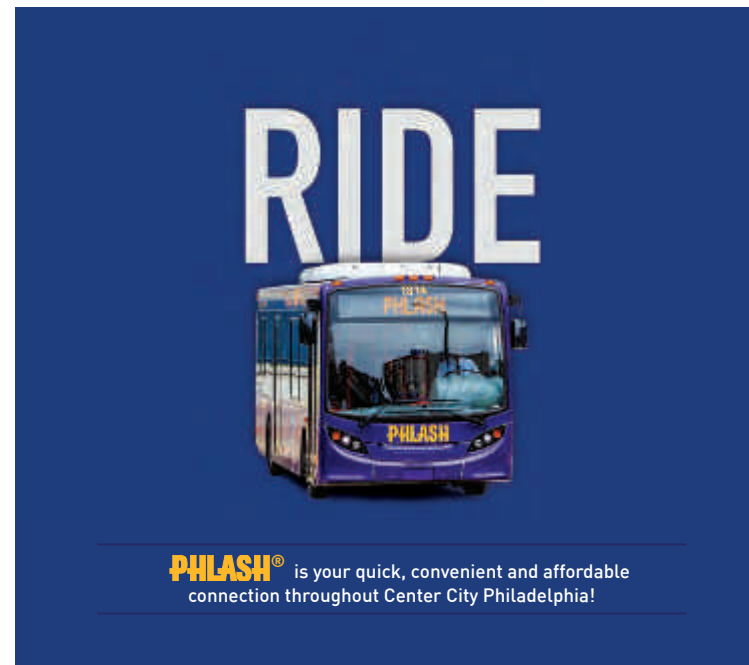
THE PHILADELPHIA ORCHESTRA—Founded in 1900, the Philadelphia Orchestra has distinguished itself as one of the leading orchestras in the world, and is led by dynamic music director Yannick Nézet-Séguin. This month: Tour of Europe and



This is not your grandfather's piano bar. It's a rockin', rollin', sing-a-long, drink-a-long helluva good time. So come on down to Jolly's and eat, drink, and (dare we say it?) be jolly!

215.238.1333
[jollysduelingpianobar.com](#)

110 Chestnut Street
Philadelphia, PA 19106



GET AN ALL-DAY PASS FOR ONLY \$5

or pay \$2 per ride. Purchase your pass on board a PHLASH® bus, at a Visitor Center location, or online. Visit [RidePhillyPHLASH.com](#) for more information.

2018 Service Schedule:

March 30 – April 29;
September 7 – November 18
Weekend Service (Runs Friday - Sunday)

May 1 – September 3;
November 23 – December 30*
Daily Service (Runs 7 days a week)

PHLASH® runs 10:00 a.m. – 6:00 p.m.

Service every 15 minutes

- Children 4 and under and Seniors ride FREE
- FREE with SEPTA Key, TrailPass, TransPass, one-day Independence Pass or Family one-day Independence Pass



The Philly PHLASH® Downtown Loop seasonal transit program is managed by the Independence Visitor Center Corporation (IVCC). PHLASH® vehicle service is provided by Krapf Group, Inc.



Israel, **June 1, 3-5**. [www.philorch.org](#). Kimmel Center for the Performing Arts, 300 S. Broad St., 215.893.1999. **Map 1, H6**

Comedy

COMEDYSPORTZ—For more than 25 years, this improvisational comedy troupe has been earning raves along with laughs. Two teams of funny guys and gals compete for points with a referee calling the action. Audience participation is encouraged. Arrive early, as seating is limited. \$20, \$15 students, seniors and military. Sa 7:30 pm and 10 pm. [www.comedysportzphilly.com](#). 2030 Sansom St., 484.450.8089. **Map 1, G5**

HELIUM COMEDY CLUB—Local talent and national headliners take the stage at this club, just off Ritzenhouse Square. This month: Tammy Pescatelli, **June 1**; Heather McDonald, **June 2-3**; Luenell, **June 7-10**; John Heffron, **June 14-16**; Greg Fitzsimmons, **June 22-24**; Trevor Moore, **June 28-30**. [www.heliumcomedy.com](#). 2031 Sansom St., 215.496.9001. **Map 1, G5**

KIMMEL CENTER FOR THE PERFORMING ARTS—

This elegant entertainment complex houses multiple stages in the hub of Philadelphia's Avenue of the Arts. This month: Philadelphia International Festival of the Arts, **June 1-10**; Bassem Youssef, **June 6**. [www.kimmelcenter.org](#). 300 S. Broad Street, 215.670.2300. **Map 1, H6**

PUNCH LINE PHILLY—A part of the thriving entertainment scene in Fishtown, this comedy club, restaurant and bar will send you laughing all the way home with new performances each week. The 300-seat venue features VIP seating and an outdoor patio. The bar offers local craft beers, cocktails and wines by the glass. This month: Jay Pharoah, **June 7-9**; Tom Rhodes, **June 28-30**. [www.punchlinephilly.com](#). 33 E. Laurel St., 215.606.6555.

Concert Venues

BB&T PAVILION—This amphitheater-style venue on the Camden, New Jersey, waterfront plays host to large concerts by the nation's most popular artists. Dead & Company, **June 1-2**; Kendrick Lamar, SZA and Schoolboy Q, **June 8**; Logic, NF and Kyle, **June 13**; Dave Matthews Band, **June 15-16**; 30 Seconds to Mars, Walk the Moon and Misterwives, **June 17**; Foreigner, **June 23**; John Fogerty and ZZ Top, **June 24**; Chris Stapleton, Marty Stuart and Brent Cobb, **June 29**; Radio 104.5's 11th Birthday Show: Imagine Dragons, Judah and the Lion AJR, Sir Sly and Missio, **June 30**. [www.waterfrontamphitheater.com](#). 1 Harbour Blvd., Camden, N.J., 800.745.3000. **Map 1, M6**

BORGATA EVENT CENTER—Located in casino-filled Atlantic City, where Philadelphia and Jersey residents go to gamble and party, the Borgata Events Center books acts by rock 'n' roll superstars, pop sensations and legendary crooners. Ringo Starr & His All Starr Band, **June 2**. [www.theborgata.com](#). One Borgata Way, Atlantic City, N.J., 866.900.4TIX.

FESTIVAL PIER—This outdoor venue at Penn's Landing offers beautiful views and a fantastic place to see concerts and events in warm weather. This month: Roots Picnic, **June 2**; Dirty Heads, **June 7**; Dropkick Murphys & Flogging Molly, **June 21**; Ray Lamontagne, **June 22**; Dr. Dog, **June 23**; Paramore, **June 24**. Ticket prices vary. [www.festivalpierphilly.com](#). Columbus Boulevard and Spring Garden Street, 215.629.3200. **Map 1, L2**



THE GUIDE

THE FILLMORE PHILADELPHIA—Fishtown's legendary Ajax Metal Factory has been transformed into a state-of-the-art 2,500 capacity venue, honoring the traditions of historic Fillmore music halls and weaving in some Philly flavor. On the top floor, The Foundry serves as a smaller venue where local bands and DJs take the stage. This month's highlights: Anthony Jeselnik: Funny Games, **June 3**; The Wonder Years, **June 8-9**; Night Riots, **June 15**; Eric Nam 2018 North American Tour, **June 22**; The Calling, **June 30**. www.thefillmorephilly.com. 29 E. Allen St., 215.309.0150. **Map 1, L1**

MANN CENTER FOR THE PERFORMING ARTS—Located just outside downtown Philadelphia, during the summer this open-air theater hosts world-class performers of all genres. This month: An Evening With Patti Lupone, **June 1**; Nathaniel Rateliff & The Night Sweats and the Head and the Heart with Brent Cowles, **June 6**; The Decemberists with M. Ward, **June 7**; Harry Connick Jr., **June 16**; Roger Daltrey Performs the Who's "Tommy," **June 19**; Barenaked Ladies Last Summer on Earth Tour with Better Than Ezra and KT Tunstall, **June 26**; WDAS Presents Summer Block Party with Jill Scott, Boyz II Men, DJ Jazzy Jeff and special guests, **June 30**. www.manncenter.org. 5201 Parkside Ave., 215.878.0400. **Map 1, A3**

THEATRE OF THE LIVING ARTS (TLA)—This former movie house is now a two-story music venue featuring popular touring bands and a funky boho vibe. This month: From Hallelujah to the Last Goodbye: Dave Lory Remembers Jeff Buckley,

June 1; Dope Shows presents Gunna, **June 3**; Sandra Bernhard, **June 7**; Femme Cyph Tour 2K18 Featuring Cupcakke, **June 8**; Booze & Tattoos: The Wildest Party on South Street, **June 9**; Haylet Kiyoko-Expectations North American Tour, **June 14**; Stephen Malkmus and the Jicks, **June 16**; Tito Nieves, **June 23**; Live Nation Presents Pouya-The Five Five Tour, **June 28**; Anthony Green: Avalon 10 Year Anniversary Tour, **June 30**. www.inphilly.com. 334 South St., 215.922.1011. **Map 1, K7**

UNION TRANSFER—Originally built as a luggage terminal in the early 1900s, this mid-size music hall now boasts towering arches, elegant chandeliers and stained glass for a dramatic yet intimate atmosphere. Separate bar area for the 21-plus crowd. This month: Red Aunts, **June 1**; The Stone-throwers, **June 2**; Japanese Breakfast, **June 3**; The Voidz, **June 4**; Men I Trust, **June 5**; Dance Gavin Dance, **June 6**; Chon, Jo Passed Dick Stusso, **June 7**; Parquet Courts, Bent Knee, **June 8**; Horse Feathers, Hot Snakes, **June 9**; Eels, **June 10**; The Voidz, **June 11**; Ben Harper & Charlie Musselwhite, **June 12**; American Aquarium, **June 13**; Eternal Summers, **June 14**; Cold Cave, **June 15**; The Voidz, **June 18**; Michigan Rattlers, **June 19**; Lower Wolves, **June 22**; Jeremy Enigk, **June 23**; The Voidz, **June 25**; The Lagoons, **June 27**; Pierce Brothers, **June 29**. www.utphilly.com. 1026 Spring Garden St., 215.232.2100. **Map 1, I2**

WELLS FARGO CENTER—The biggest names in music stop at this stadium arena and sports complex in South Philadelphia. Get there by car or take

SEPTA's Broad Street subway line to AT&T Station. This month: Justin Timberlake, **June 2**; Depeche Mode, **June 3**; Def Leppard with Journey, **June 11**; U2, **June 13-14**; Harry Styles, **June 15**; Paul Simon, **June 16**. www.wellsfargocenterphilly.com. 3601 S. Broad St., 215.336.3600. **Map 4, D4**

Gay & Lesbian Clubs

THE BIKE STOP—This longtime club offers four levels with different themes, like the Short Stop for sports fans with games on TV and the Pit Stop for leather fans. Other floors host dancing and cruising. M-Sa 4 pm-2 am, Su 2 pm-2 am. www.thebikestop.com. 206 S. Quince St., 215.627.1662. **Map 1, I6**

KNOCK RESTAURANT AND BAR—Known for its friendly scene and inspired cuisine, Knock draws a sophisticated gay clientele of all ages. Daily happy hour is 5 pm-7 pm. Daily 11 am-2 am. www.knockphilly.com. 225 S. 12th St., 215.925.1166. **Map 1, I6**

UBAR—With its large oval bar and mirrored walls, this Gayborhood institution regularly draws a lively crowd. Relax with a no-frills brew and some juke box tunes. Daily 11 am-2 am. www.ubarphilly.com. 1220 Locust St., 215.546.6660. **Map 1, I6**

Gentlemen's Club

DELILAH'S—"America's #1 Gentlemen's Club" features "The World's Most Beautiful Showgirls." Find a complimentary after-work buffet, happy-hour specials and free cover with hotel room key or game-day ticket stub. Free parking. M-Sa 11:30

Win A Trip To Marin County



Escape to the pristine wilderness of Tomales Bay on the Northern California coast, where you'll find miles of beaches, scenic hiking trails, artisan food and flourishing wildlife. Trip includes airfare for two, a two-night/three-day stay in a cozy seaside cottage at Nick's Cove, dinner at Nick's Cove Restaurant and Oyster Bar and a stand-up paddleboarding excursion.

Enter daily through June 30th at wheretraveler.com/contest



wheretraveler.com

SUMMER ON THE Waterfront

The destination for every summer mood

DelawareRiverWaterfront.com



THE GUIDE

am-2 am, Su 1 pm-2 am. www.delilahs.com. 100 Spring Garden St., 215.625.2800. **Map 1, L2**

Karaoke

THE HAPPY ROOSTER—On Thursday nights at 10 pm, this cheery restaurant welcomes karaoke lovers. Daily 11:30 am-2 am. www.thehappyrooster.com. 118 S. 16th St., 215.963.9311. **Map 1, H5**

YAKITORI BOY—This high-tech karaoke bar in Philly's Chinatown draws a fun crowd. Belt your favorite tunes or rent one of eight private rooms. Daily 5 pm-2 am. www.yakitoriboy.com. 211 N. 11th St., 215.923.8088. **Map 1, I4**

Live Music Clubs

THE CLEF CLUB OF JAZZ AND THE PERFORMING ARTS—This four-story building, affectionately referred to as "The House That Jazz Built," was formed by a music union in the mid-20th century and has been the hangout of such famous members as John Coltrane, Nina Simone and Ella Fitzgerald. It has a large concert hall and boasts an elegant bar on the second floor, which overlooks a stage and tables. www.clefclubofjazz.org. 738 S. Broad St., 215.893.9912. **Map 1, H7**

JOHNNY BRENDA'S—Catch locally and nationally renowned indie rock acts almost every night at this hipster hangout in the up-and-coming Fishtown neighborhood. The venue is upstairs from a tavern that features upscale pub grub. This month: Natalie Prass, **June 2**; River Whyless, **June 12**; We Are Scientists, **June 14**; Parker Millsap, **June 21**; White Denim, **June 24**; Lovelorn, **June 30**. www.johnnybrendas.com. 1201 N. Frankford Ave., 215.739.9684. **Map 1, L1**

WORLD CAFE LIVE—There's always something happening at this University City venue and restaurant, featuring local and national acts on two stages and frequent open mics and jam sessions. Ticket prices and show times vary. M-F from 10 am, Sa-Su from 5 pm. This month: Bodeans, **June 6**; The Posies, **June 13**; Goodfight and Tulpa, **June 15**; The Jay-players, **June 16**; Tracy Bonham and Blake Morgan, **June 20**; Matthew Sweet, **June 21**; An Evening With Greg Laswell, **June 22**; Suzanne Santo of Honey-Honey, **June 26**; Kuinka, **June 27**; John Byrne Band with No Irish Need Apply, **June 29**. www.worldcafe.live.com. 3025 Walnut St., 215.222.1400. **Map 1, E5**

Nightclubs

BLEU MARTINI—Specializing in more than 30 different martinis, this swanky bar is located in the heart of Old City's bustling nightlife strip. Daily 4 pm-2 am. www.bleumartiniphillly.com. 24 S. Second St., 215.940.7900. **Map 1, K5**

CUBA LIBRE RESTAURANT & RUM BAR—Also a popular restaurant, Cuba Libre boasts a lively fiesta on weekends. Professional Latin dancers join the crowd on Fridays and Saturdays. Call for hours. www.cubalibrerestaurant.com. 10 S. Second St., 215.627.0666. **Map 1, K5**

RUMOR—Put on your dancing shoes—stilletos preferred—to hit this popular Center City nightclub. Two large dance floors, multiple sound systems, a private VIP vault and multiple bars. Th-Sa 10 pm-2 am. www.rumorphilly.com. 1500 Sansom St., 215.988.0777. **Map 1, H5**

VANGO—This hip nightclub is where Philly's young and stylish set get their fix of pulsing dance music and cool cocktails. Enjoy a drink at the skybar upstairs, where club-goers gather on warm summer evenings for drinks and conversation. Daily 5 pm-2 am. www.vangoloungeandskybar.com. 116 S. 18th St., 215.568.1020. **Map 1, G5**

Sports

ARENA FOOTBALL: SOUL HOME GAMES—With multiple division, conference and world championships, the winningest Arena Football League team tackles rivals at Wells Fargo Center. Washington Valor **June 10**; Baltimore Brigade **June 30**. www.philadelphiasoul.com. Wells Fargo Center, 3601 S. Broad St., 215.253.4900. **Map 1, H8**

BASEBALL: PHILADELPHIA PHILLIES HOME GAMES—Catch the fightin' Phils at Citizens Bank Park, a ballpark that combines modern amenities with old-fashioned charm. Milwaukee Brewers **June 8-10**; Colorado Rockies **June 12-14**; Seattle Mariners **June 18-20**; New York Yankees **June 25-27**; Washington Nationals **June 28-30**. www.phil.lies.com. Citizens Bank Park, One Citizens Bank Way, 215.463.1000. **Map 1, H8**

Theater

BRISTOL RIVERSIDE THEATRE—Founded in 1984, Bristol Riverside Theatre is a state-of-the-art, riverfront theater in the Philadelphia countryside of Bucks County. This month: "The Music of

Bobby Darin," **through June 3**; "Unforgettable: A Tribute to America's Greatest Songwriters," **June 14-24**. www.brststage.org. 120 Radcliffe St., Bristol, Pa., 215.785.0100.

HEDGEROW THEATRE—This theater located in the suburbs of Philadelphia offers a mix of traditional and experimental repertory productions, in addition to collaborations with other theaters. This month: "His Girl Friday," **June 30-July 29**. www.hedgerowtheatre.org. 64 W. Rose Valley Road, Rose Valley, Pa., 610.565.4211.

KIMMEL CENTER FOR THE PERFORMING ARTS—This elegant entertainment complex houses multiple stages in the hub of Philadelphia's Avenue of the Arts. This month: Philadelphia International Festival of the Arts, **June 1-10**; "Aladdin," **June 13-July 1**; An Inconceivable Evening with Cary Elwes, **June 15**; Men Are From Mars; Women Are From Venus Live, **June 23**. www.kimmelcenter.org. 300 S. Broad Street, 215.670.2300. **Map 1, H6**

LANTERN THEATER COMPANY—The Lantern's productions evoke thoughtful discussion long after the plays have ended. This month: "Don't Dress for Dinner," **June 1-24**. www.lanterntheater.org. St. Stephen's Theater, 10th and Ludlow streets, 215.829.0395. **Map 1, I5**

MANN CENTER FOR THE PERFORMING ARTS—Located just outside downtown Philadelphia, during the summer this open-air theater hosts world-class performers of all genres. This month: An Evening With Patti Lupone, **June 1**; Roger

ENTERTAINMENT



Daltrey Performs the Who's "Tommy," **June 19**. www.manncenter.org. 5201 Parkside Ave., 215.878.0400. **Map 1, A3**

THE MEDIA THEATRE FOR THE PERFORMING ARTS—This theater company in nearby Media, Pa. features new and classic productions, from Broadway hits to shows for kids. This month: "Newsies," **through June 10**. www.mediatheatre.org. 104 E. State St., Media, Pa., 610.891.0100.

PAINTED BRIDE ART CENTER—This funky, interdisciplinary Old City venue features experimental theater, dance, music and visual arts by some of the world's cutting-edge artists. This month: Oliver Lake's Big Band, **June 9**. www.paintedbride.org. 230 Vine St., 215.925.9914. **Map 1, K3**

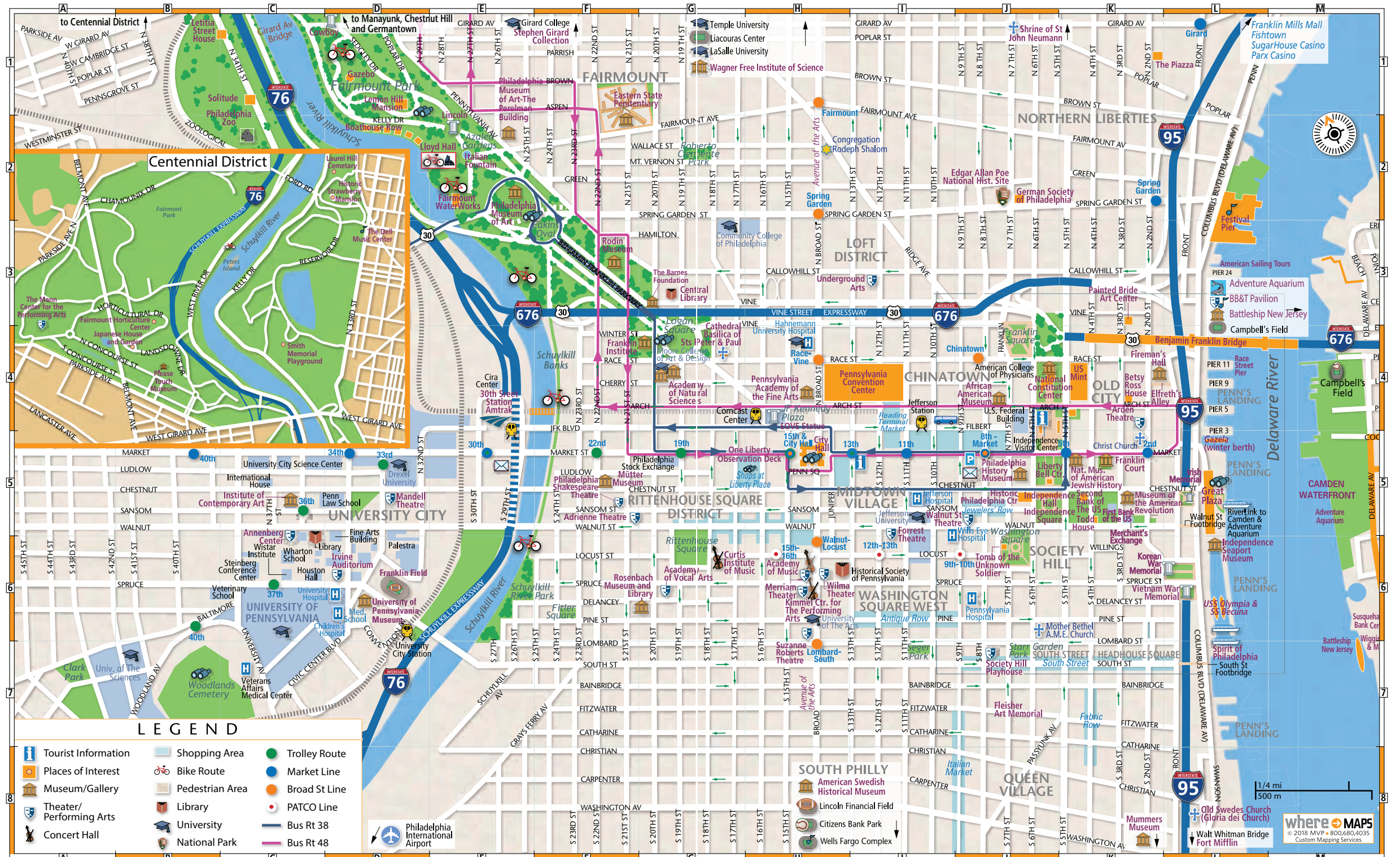
PEOPLE'S LIGHT THEATRE—Just outside Philly, People's Light is a professional theater producing diverse, thought-provoking and critically acclaimed works. This month: "Skeleton Crew," **June 13-July 8**. www.peopleslight.org. 39 Conestoga Road, Malvern, Pa., 610.644.3500.

WALNUT STREET THEATRE—America's oldest continuously operating theater has been bringing classics to life on stage since 1809. This month on the Mainstage: "Mamma Mia!," **through July 15**. Independence Studio on 3: "Tell Me on a Sunday," **through June 10**. WST for Kids: "Ivy & Bean: The Musical," **June 1-10**. www.walnutstreettheatre.org. 825 Walnut St., 215.574.3550. **Map 1, J5**



MAP 1 PHILADELPHIA DOWNTOWN WEST

PHILADELPHIA DOWNTOWN EAST

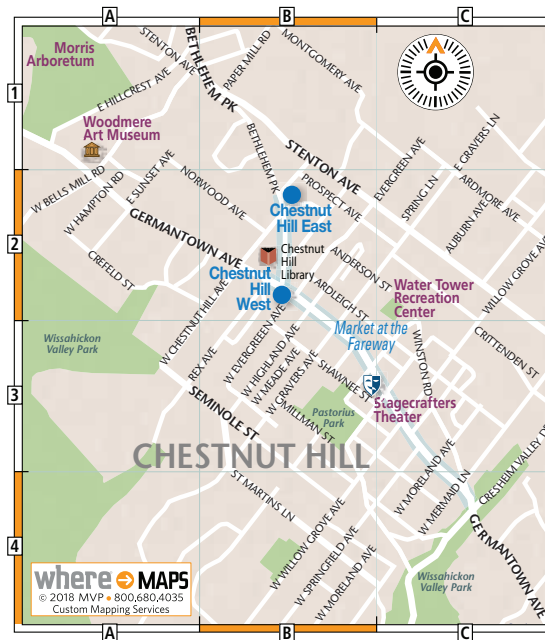




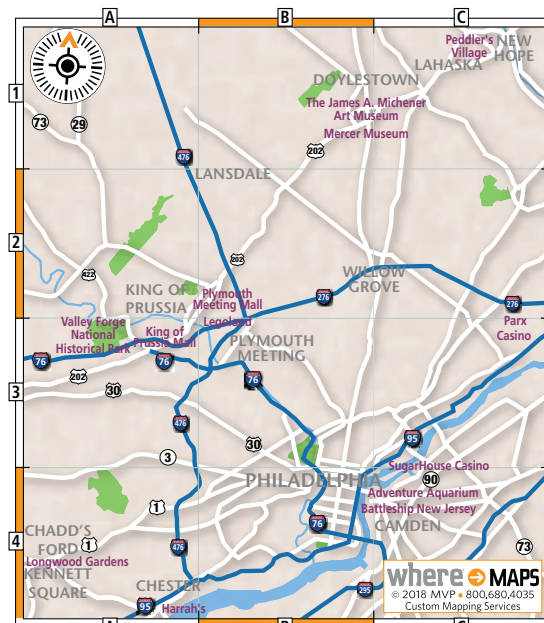
MAP 2 PHILADELPHIA HISTORIC AREA



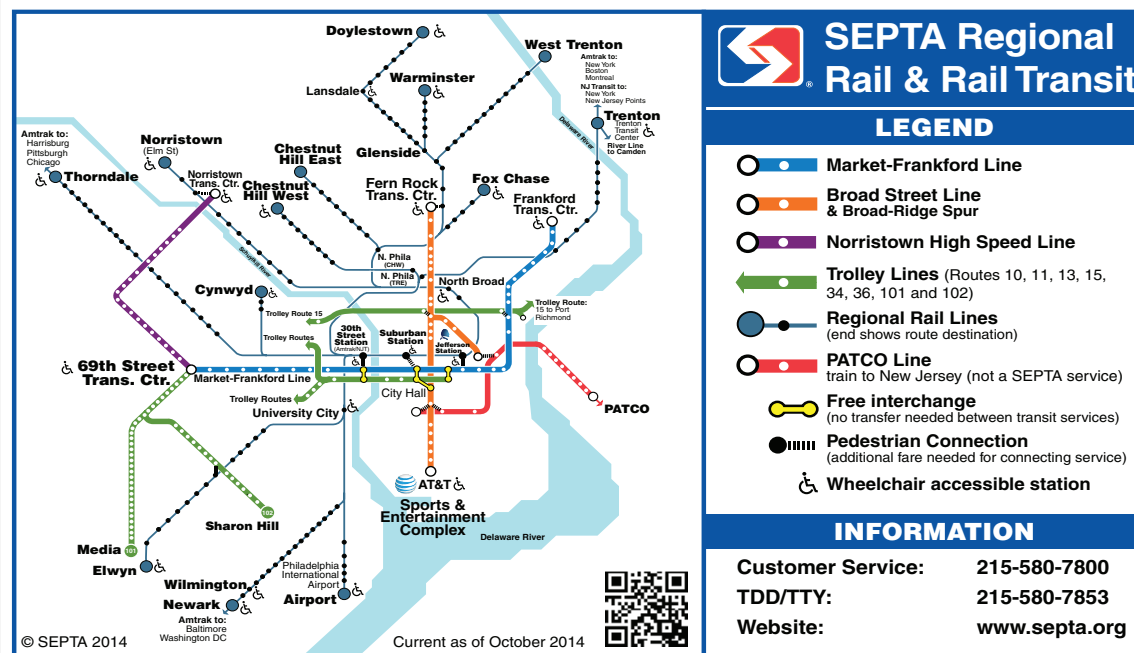
MAP 3 PHILADELPHIA CHESTNUT HILL



MAP 4 PHILADELPHIA METRO MAP



MAP 5 PHILADELPHIA SEPTA



[WHERE INSIDE] Philadelphia Your Way

UNIQUE TRAVEL RECOMMENDATIONS, FIT TO MATCH YOUR PERSONAL STYLE.
FIND THE CITY CURATED FOR YOU AT WHERETRAVELER.COM/PHILADELPHIA



1



1



1



2



2



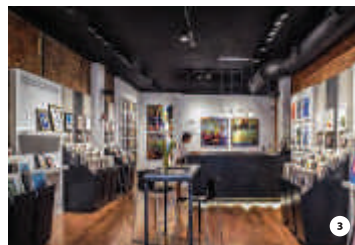
2



3



3



3

Zen Seekers

Founded in 1814 to collect common materials, **(1) The Athenaeum of Philadelphia** now has collections of books, architectural drawings, photographs and historic objects that attract architects, interior designers and museum curators. Let your inner bookworm out and find some peace in a piece of history. Feel more relaxed outdoors? **(2) Bartram's Garden** is a 45-acre National Historic Landmark that is ideal for soaking in the seasons. Stroll around the gardens, kayak along the river or discover the surrounding historic buildings. Plus, the gardens feature a great view of the skyline. If pampering is more your thing, relax the old fashioned way—at a spa. **(3) Rescue Spa** has a wide range of treatments that are sure to leave you feeling relaxed and refreshed.

Guys

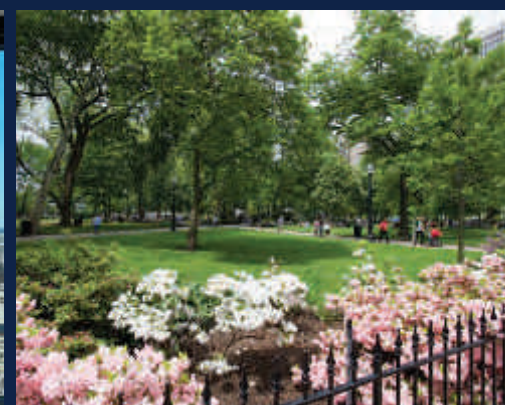
For a top-notch guys' night out, gather your buddies and head to **(1) Frankford Hall**. The bustling outdoor German-style beer garden has ping-pong tables, craft beer and great food, making for a great time any time you visit. Auto enthusiasts get their hearts racing at the **(2) Simeone Foundation Automotive Museum**. Here, the spirit of motor competition permeates the space, which is full of vintage and rare vehicles on display. Even better? Check the event schedule online and visit when pristine specimens are taken out for a spin. Don't forget to snap some Instagram pics. If the guys just want to chill, head to **(3) Ashton Cigar Bar**. With more than 200 varieties of stogies, a bar to boot and a swanky atmosphere, Ashton makes a great spot for catching up with pals.

LGBTQ Crowd

Craving Mexican food? Look no further than **(1) Lolita**. This trendy bar and restaurant is open until late and dishes out unique tacos that pair well with tasty margaritas. Try the Cholula fried chicken tacos and the blood orange margarita (thank us later). With over 20 years of experience, **(2) Andre Richard Salon** has some of the best stylists in the city. Located right in the Gayborhood, the salon's experts specialize in blowouts, balayage and cuts, but they can touch up an existing style or create a whole new look. As you stroll through the Gayborhood, be sure to pop into **(3) Carre D'Artistes**. This haven of art along 13th Street is full of inspiring pieces by artists from around the world. With so many options, you're likely to find something special to take home.

(FROM TOP TO BOTTOM, LEFT TO RIGHT) ©JUSTIN O./FLICKR, CREATIVE COMMONS; COURTESY RESCUE SPA; COURTESY FRANKFORD HALL; ©G. WIDMAN/VISIT PHILADELPHIA; ©ASHTON CIGAR BAR; ©G. WIDMAN/VISIT PHILADELPHIA; ©ASHTON CIGAR BAR; ©G. WIDMAN/VISIT PHILADELPHIA; ©ASHTON CIGAR BAR; ©G. WIDMAN/VISIT PHILADELPHIA

Where modern luxury meets historic elegance.
Discover what it's like to LIVE here.
Live Historic. Live Bold. Live Philadelphia.



Kurfiss
Sotheby's
INTERNATIONAL REALTY



JASON KRAVITZ
Top Real Estate Agent at Kurfiss Sotheby's Philadelphia
c. 267.324.4141 | o.215.735.2225
www.RealtorJK.com | RealtorJK@Gmail.com
1631 Locust Street Suite 300, Philadelphia, PA 19103
Each office is independently owned & operated

