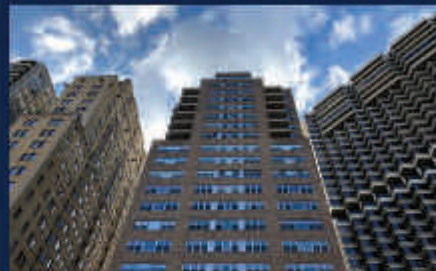
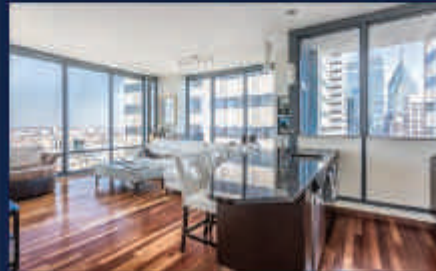




Philadelphia, where modern luxury meets historic elegance. As top real estate agent at Kurfiss Sotheby's International Realty in Philadelphia, let me show you what it's like to live in and around this iconic city.



JASON KRAVITZ

c.267.324.4141 | RealtorJK@gmail.com
o.215.735.2225 | www.RealtorJK.com
1631 Locust Street, Suite 300
Philadelphia, PA 19103



Kurfiss

Sotheby's
INTERNATIONAL REALTY

Each office is independently owned & operated

where

GUIDE TO PHILADELPHIA



PROMOTION

THE BOURSE IS BACK!
PHILLY'S NEW ARTISAN
FOOD HALL OPENS ON
INDEPENDENCE MALL

PLAY

RIVERSIDE
RECREATION

SHOP

FASHION FOR
FITNESS

EAT

DINING AT
THE SHORE

AUGUST 2018

wheretraveler.com



LAGOS

MY LAGOS MY WAY

CAVIAR COLLECTIONS
RITTENHOUSE SQUARE | 215.567.0770 | LAGOS.COM

CONTENTS

SEE MORE OF PHILADELPHIA AT WHERETRAVELER.COM

the plan

02 Editor's Itinerary

The essential things to see and do in Philadelphia, plus a 90-minute visit to a family-friendly riverside attraction.

04 Where Calendar Hot Dates This Month

Top things to do in August.



40 Philadelphia Your Way

Our picks for seeing the city if you're on a budget, with the kids, looking for a little serenity—or all three.



COVER PROMOTION

The Bourse is back! Philly's new artisan food hall opens on Independence Mall. COURTESY PUNCH MEDIA

CONNECT WITH US



READ US ON MAGZTER

(CLOCKWISE FROM TOP) G. WIDMAN/VISIT PHILADELPHIA®; M. EDLOW/VISIT PHILADELPHIA®; ©KONGSAK/SHUTTERSTOCK



where now

6 Water Works

With two important waterways, locals make the most of riverside living. BY AMY GORDON

8 Winning Sites

Tours through this multi-faceted city offer revealing looks in a wide variety of interests.

10 Let's Get Physical

From high-end sneakers to cycling gear, where to shop for athletic pursuits.

11 Shore Bets

Coastal New Jersey beckons with eateries that taste of summer.

the guide

12 SHOPPING

Top spots to shop, from department stores to independent boutiques

19 GALLERIES & ANTIQUES

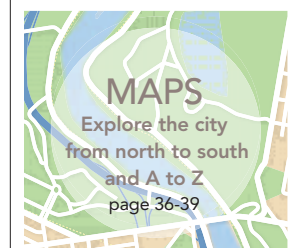
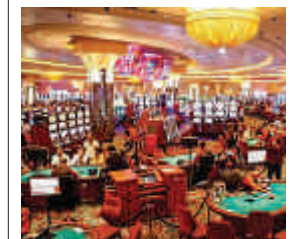
Paintings, photography, sculptures, antiques, plus exhibitions to see now

22 DINING

Tasty Philly restaurants, from fine dining to fast casual, in more than a dozen neighborhoods

30 ENTERTAINMENT

Fun bars, hip lounges, world-class theater and many more ways to enjoy the arts



NEWS TO TRAVEL BY

Essential Philadelphia



Summer may be winding down this month, but you wouldn't know it in this town. From the eastside to the westside, Philadelphia fills the days till fall with plenty of fun in the sun. When you're done exploring museums and historic sites, why not head down to the river? After all, we've got two famous waterways with plenty of action (page 6). We've also got great tips on touring Philly no matter what your travel style, where to go to update your workout wear, and a few ideas for easy day trips. If time is of the essence, here's a quick guide to a top attraction.

90 MINUTES IN: Independence Seaport Museum

This site founded by J. Welles Henderson has been offering an insightful look at the region's waterways since 1960, when it was known as the Philadelphia Maritime Museum. In 1995, the museum took its current name and moved to its current location at Penn's Landing on the Delaware Waterfront.

Start inside at the exhibition "Patriots and Pirates," which tells the story of the U.S. Navy (and its encounters with buccaneers). From here, check out key artifacts, like the bridge from the U.S.S. Lawrence, which was built in Camden, New Jersey, just across the river. For something a little more hands-on, climb aboard Diligence, a 102-foot full-size model of the 1797 original schooner, and glimpse 18th-century life at sea.

Outside, you'll find the Cruiser Olympia and Submarine Becuna (pictured), National Historic Landmark



ships that have been berthed at the museum since 1996.

Launched in 1892, the Cruiser Olympia is the oldest surviving American naval warship from its era and the oldest floating steel warship. It served as Commodore Dewey's flagship when he won the Battle of Manila Bay in the Spanish-American War.

In her heyday, the Subma-

rine Becuna (aka "Becky"), a WWII and Cold War-era submersible, patrolled the Pacific and Atlantic oceans, sinking 3.5 Japanese merchant ships and "eavesdropping" on Soviet submarines.

Correction: The Family Fun Guide incorrectly lists information for the museum. Admission prices are \$17; seniors/ students/military \$12; children under 3 free. Historic ships are open Th-Sa, 10 am-8 pm through Labor Day.

W Get going! Explore the city at wheretraveler.com.

where® in the world

Where is an international network of magazines first published in 1936 and distributed in over 4,000 leading hotels in more than 50 places around the world. Look for us when you visit any of the following cities, or plan ahead for your next trip by visiting us online at wheretraveler.com.

UNITED STATES Alaska, Atlanta, Baltimore, Boston, Charleston, Charlotte, Chicago, Dallas, Indianapolis, Jacksonville/ St. Augustine/ Amelia Island, Las Vegas, Los Angeles, Maui, Miami, Minneapolis/ St. Paul, New Orleans, New York, Oahu, Orange County (CA), Orlando, Philadelphia, Phoenix/ Scottsdale, San Diego, San Francisco, Seattle, St. Louis, Tampa, Tucson, Washington, D.C. **ASIA** Hong Kong, Macau, Singapore **AUSTRALIA** Brisbane, Gold Coast, Melbourne, Sydney **CANADA** Calgary, Canadian Rockies, Edmonton, Halifax, Muskoka/ Parry Sound, Ottawa, Toronto, Vancouver, Victoria, Whistler, Winnipeg **EUROPE** Berlin, Budapest, Istanbul, London, Madrid, Milan, Moscow, Paris, Rome, St. Petersburg



This is not your grandfather's piano bar. It's a rockin', rollin', sing-a-long, drink-a-long helluva good time. So come on down to Jolly's and eat, drink, and (dare we say it?) be jolly!

215.238.1333
jollysduelingpianobar.com

110 Chestnut Street
Philadelphia, PA 19106



YOUR TRAVELING COMPANION SINCE 1936®

where®
PHILADELPHIA

Member of the **M** Morris Media Network

MVP | EDITORIAL & DESIGN
GROUP EDITOR **Anne Kim-Dannibale**
EDITORIAL ASSISTANT **Alexander Oliveira**
ART DIRECTOR **Dusty Martin**
CONTRIBUTING WRITER **Amy Gordon**

MVP | CIRCULATION
CIRCULATION AND COMMUNICATIONS MANAGER
Zach Santo

ADVERTISING
JAMES G. ELLIOTT CO., INC.
EXECUTIVE DIRECTOR **Pat O'Donnell**
ASSOCIATE PUBLISHER **Brenda Mendte 610.864.0722**
b.mendte@jgco.com

MORRIS VISITOR PUBLICATIONS
MVP | EXECUTIVE
PRESIDENT **Donna W. Kessler**
CHIEF FINANCIAL OFFICER **Dennis Kelly**
VICE PRESIDENT, OPERATIONS **Angela E. Allen**
HEAD OF DIGITAL **Richard H. Brashear II**
DIRECTOR OF CIRCULATION **Scott Ferguson**

MVP | CREATIVE
CHIEF CREATIVE OFFICER **Haines Wilkerson**
EDITORIAL DIRECTOR **Margaret Martin**
DIRECTOR OF PHOTOGRAPHY **Isaac Arjonilla**
CREATIVE COORDINATOR **Beverly Mandelblatt**

MVP | PUBLICATION SERVICES
PUBLICATION SERVICES DIRECTOR **Karen Fralick**
PUBLICATION SERVICES MANAGER **Cher Wheeler**
DIGITAL IMAGING **Erik Lewis**

MVP | MANUFACTURING & TECHNOLOGY
DIRECTOR OF MANUFACTURING **Donald Horton**

E-mails for all of the above except contributors:
firstname.lastname@morris.com

MVP

Morris Visitor Publications

MVP | PHILADELPHIA
1455 Pennsylvania Ave. NW, Suite 457,
Washington, DC 20004, 202.349.9858

MORRIS COMMUNICATIONS
CHAIRMAN **William S. Morris III**
PRESIDENT & CEO **William S. Morris IV**

wheretraveler.com

Where® magazine is produced by Morris Visitor Publications (MVP), a division of Morris Communications Co., LLC, 725 Broad St., Augusta, GA 30901, morrismedianetwork.com. Where magazine and the where® logo are registered trademarks of Morris Visitor Publications. Where makes every effort to ensure the accuracy of the information it publishes, but cannot be held responsible for any consequences arising from errors or omissions. All rights reserved. Reproduction in whole or in part strictly prohibited.



GET OVER \$500 IN OFFERS

**WHEN YOU BECOME A NEW MEMBER
AT SUGARHOUSE CASINO**

**THE ALL-NEW WINNER'S PLAYBOOK
IS BURSTING WITH GREAT WAYS TO
DISCOVER PHILLY'S CASINO AND
ENTERTAINMENT HOT SPOT!**

- Show off your local pride with a **FREE PHILLY PHILLY T-SHIRT**
- **\$25 MATCH BET**
- Take 25% OFF your bill at **HUGO'S FROG BAR & CHOPHOUSE**
- Enjoy a 1-day pass into the exclusive **HIGH LIMIT LOUNGE**
- **AND MORE!**

JOIN NOW - IT'S QUICK, EASY & FREE!

Visit Rush Rewards to sign up today or go to sugarhousecasino.com for more information.

Offers valid now through September 30, 2018.

**FREE SELF-PARKING ON N. DELAWARE AVE,
1 MILE NORTH OF THE BEN FRANKLIN BRIDGE**

@f SUGARHOUSECASINO.COM

GAMBLING PROBLEM? CALL 1-800-GAMBLER

**SUGAR
HOUSE**
CASINO



THROUGH AUG. 19: The Oval+

Families who've done it all may want to hit this green space located on Philly's answer to Paris' Champs-Élysées. Eight acres of parkland bustle with activities for both kids and adults alike. Wednesdays through Sundays, set the young ones loose on games like Connect Four and ping pong, plus a maze and a sandbox. Meanwhile, adults toast brews in the beer garden and groove to deejays. Food trucks, outdoor flicks, even fitness classes, like alfresco yoga (pictured) round out the fun. Free. Times vary; check website for schedule. 2451 Benjamin Franklin Parkway, 215.607.3477, www.theovalphl.org



Flea Market



Old City Eats

6 Great Things Not to Be Missed

1 OUTDOOR FILMS > THROUGH AUG. 24

Dilworth Park spotlights flicks like "Black Panther" and "Wonder Woman." Free. 8:30 pm. 1 S. 15th St., 215.440.5500, centercityphila.org

2 FOR FOODIES > THROUGH AUG. 30

Old City Eats offers a taste of the historic zone's restaurants at a discount. 5-8 pm. Check website for restaurants, 215.592.7929, oldcitydistrict.org

3 JAZZY NIGHTS > AUG. 3-31

Top musicians like Boney James take the mic. Free. 7:30-9 pm. Blue Cross RiverRink, 101 S. Christopher Columbus Blvd., delaweriverwaterfront.com

4 STREET-SIDE FUN > AUG. 5

The Northern Liberties neighborhood comes alive with food trucks, musicians and more. Check website for updated details, including admission. Noon-10 pm. 600-1100 blocks of 2nd St., 2ndstreetfestival.org

5 ANTIQUE FLEA MARKET > AUG. 25

Kimmel Center's Commonwealth Plaza turns into a marketplace for rare finds. Free admission. Opens 8 am. 300 S. Broad St., kimmelcenter.org

6 NEW FOOD HALL > ALL MONTH

The historic Victorian commodities exchange building re-emerges as The Bourse Food Hall, a modern center for artisan tastes (see cover). 111 S. Independence Mall E., theboursephilly.com

TOP SPOTS

This month, Philadelphians immerse themselves in the city's vibrant multiethnic tapestry with cultural celebrations of art, music, food and more. No passport required.

AUG. 2-5

BLACKSTAR

This unique film festival highlights visual storytelling by indigenous communities around the world. \$12/\$150 all access. Times vary. Venues vary, www.blackstarfest.org

AUG. 5

ACANA FEST

Several African nations shine a light on their art, music, dance and food. Expect back-to-back musical performances of reggae, Afropop and more fun. Free. 2-8 pm. Penn's Landing, Columbus Blvd. and Chestnut St., www.acanafest.org

AUG. 18

FESTIVAL OF INDIA

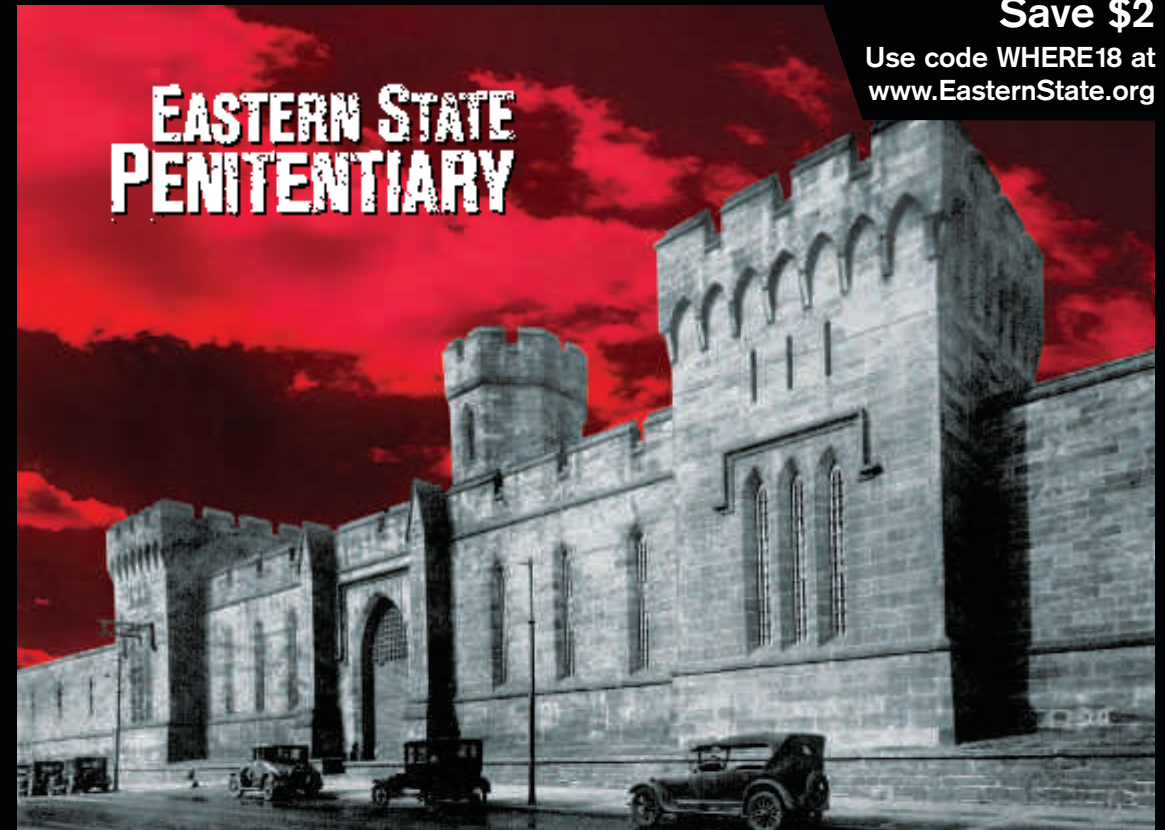
The subcontinent's Independence Day kicks off with traditional arts, music and dance, along with modern twists at this lively annual party. Free. Noon-7 pm. Penn's Landing, Columbus Blvd. and Chestnut St., www.indiacouncil.org

AUG. 19

CARIBBEAN FESTIVAL

Experience island life with foods like jerk chicken and performances by steel drum bands, plus a children's village re-enactment and maypole dancing. Noon-8 pm. Penn's Landing, Columbus Blvd. and Chestnut St., 215.879.9352, www.phillycaribbeanfestival.com

(FROM TOP) R. KENNEDY/ISTOCKPHOTO, ©THE SINCOS STUDIO/SHUTTERSTOCK, ©KONGSAK/SHUTTERSTOCK



Save \$2

Use code WHERE18 at www.EasternState.org

Explore America's Most Historic Prison

A haunting world of crumbling cellblocks and empty guard towers



Tours include the cellblocks, Al Capone's Cell, artist installations, and an audio tour narrated by actor Steve Buscemi.

Open Every Day 10 am to 5 pm • (215) 236-3300 • www.EasternState.org
2027 Fairmount Avenue, Philadelphia, PA • Just five blocks from the Philadelphia Museum of Art

→ Philadelphia where now

The savvy traveler's guide to the City of Brotherly Love

SUMMER IN THE CITY

Water Works

SET ON THE BANKS OF BOTH the Delaware and Schuylkill rivers, Philadelphia holds an important place in America's maritime history, and today these two waterways set the scene for a slew of recreational activities. Here's how locals make the most of riverside living.—By Amy Gordon



(CLOCKWISE FROM TOP) M. EDLOW, R. KENNEDY, M. FISCHETTI, ALL VISIT PHILADELPHIA®; (FACING PAGE) M. FISCHETTI/VISIT PHILADELPHIA®

Explore In Philadelphia, families and history buffs are in luck. The **Independence Seaport Museum** (211 S. Columbus Blvd., 215.413.8655, phillyseaport.org) offers guided tours of the Olympia, which was first launched in 1892 and is the oldest steel warship currently afloat in the world, and the Becuna, a submarine deployed during World War II, the Cold War, the Korean War and the Vietnam War. When hunger strikes, head over to **Moshulu** (401 S. Columbus Blvd., 215.923.2500, moshulu.com), where the world's oldest and largest four-masted tall ship does double duty as a bar and restaurant. Across the way in nearby Camden, New Jersey, **Battleship New Jersey** (62 Battleship Place, Camden, New Jersey, 856.966.1652, battleshipnewjersey.org), which was helmed by Admiral "Bull" Halsey and remains America's most decorated warship, also gives a glimpse into the area's naval history.

Beyond historic ships, families with kids in tow have two more popular spots on the banks of the Delaware River to explore. At **Blue Cross RiverRink Summerfest** (101 N. Columbus Blvd., 215.925-RINK, delawareriverwaterfront.com), visitors enjoy carnival games, an urban beach, a boathouse-style lodge, a mini golf course, an outdoor roller rink and a 60-foot-tall Ferris wheel with seemingly endless views. **Spruce Street Harbor Park** (Columbus Blvd. and Spruce St., 215.922.2386, delawareriverwaterfront.com), located just down the road, is a hammock-laden hamlet complete with boardwalk-style games, a beer garden, an overwater net lounge and bites from some of the city's best-loved eateries, including Franklin Fountain, Chickie's and Pete's and Distrito.



Relax Part of the University of Pennsylvania, **Penn Treaty Park** (3000 Walnut St., 215.573.2520, facilities.upenn.edu) makes an ideal spot to take in gorgeous vistas while relaxing in 24 acres of green space with sports facilities, trails and lawns. On the eastern shore, runners and cyclists traverse the **Schuylkill River Trail** (484.945.0200, schuylkillrivertrail.com), a 30-mile waterfront path winding to Parkford. **Boathouse Row** (1 Boathouse Row, 215.685.3936, boathouserow.org) offers a picturesque backdrop for a riverside stroll. At night, the clubhouses sparkle with colorful lights that reflect off the water, providing one of the most iconic and Instagrammable sights in the city.



Splash Ready to try out your sea legs? At **Paddle Penn's Landing**, run by the Independence Seaport Museum (211 S. Columbus Blvd., 215.413.8655, phillyseaport.org), aspiring sailors get their feet wet on rented paddleboats, swan and dragon boats, rowboats and kayaks. For a little more instruction, **Schuylkill Banks** (215.574.3550, schuylkillbanks.org) takes groups and individuals on kayak tours, which include a half-hour of instruction and an hour out on the water. At **Bartram's Garden** (5400 Lindbergh Blvd., 215.729.5281, bartramsgarden.org), Saturdays are made for boating with paddlers navigating the Schuylkill by canoe or kayak. Those looking for a bit more of a workout test their agility with stand-up paddle boarding lessons from **Hidden River Outfitters** (267.588.3512, hiddenriveroutfitters.com), a company that operates outposts on the Schuylkill River at the Manayunk Brewery dock and under the Walnut Street Bridge.

Winning City Sites

Whether you're a foodie, a movie buff or a family with kids in tow, tours through this multi-faceted city offer revealing looks covering a wide variety of interests.



Philadelphia Museum of Art, "Rocky" statue



Sampling the City

One of the best ways to get to know Philly? Through its food and drink. City Food Tours (800.656.0713, www.phillysfoodtour.com) offers several explorations of the city's rich culinary scene, from gourmet to casual. The Flavors of Philly tour offers samples of classic local foods—think cheesesteaks and soft pretzels—with a sweet ending at Reading Terminal Market's Famous 4th Street Cookie Company and Chocolate by Mueller. Follow up any tasty trip with The Tippler's Tour (www.historicphiladelphia.org/tipplers-tour), which follows an 18th-century guide through Old City's historic and modern-day watering holes. With cocktails, snacks and tales of yesteryear, this entertaining blast to the past quenches thirsts for knowledge and local quaffs.

HISTORY BUFFS

As the name suggests, Franklin's Footsteps is a 75-minute jaunt that tracks the founding father and his compatriots during the birth of the nation. Energetic, informative guides illuminate spots like Franklin Court, Independence Hall, Carpenters' Hall, Christ Church and the Betsy Ross House, whetting appetites for further explorations. 215.389.1279, www.phillytour.com

ART LOVERS

The Mural Arts Program Tour takes art enthusiasts on a two-hour excursion through a tapestry of more than 3,000 murals throughout the city. Guides reveal the colorful tales behind these outdoor masterpieces and explain the history of the city's much-loved Mural Arts Program. 215.925.3633, www.muralarts.org/public-tours

ARCHITECTURE FANS

The Philadelphia Center for Architecture offers the Modern Metropolis tour, a two-hour amble that sheds light on Philly's buildings. Even participants who don't know their Victorian Eclecticism

from their French Revivalism will love the insight into landmarks from City Hall to the Comcast Center (the city's tallest building). 215.569.3186, www.philadelphiaca.org/architecture-tours

FILM FANATICS

The Philly Movie Sites bus tour shines a spotlight on 50 sites featured in popular flicks like "Rocky," "In Her Shoes," "National Treasure," "Shooter" and, of course, "Philadelphia." A fun added bonus? Guides screen the actual movie clip at each location. The private tour also includes plenty of anecdotes about stars, sets and local movie-making history. 215.625.7980, www.moviesitetour.com

FAMILIES

The budget-conscious Free and Friendly Tours offers just that. Congenial (and knowledgeable) locals take groups through the city they love and ask only for tips in return. Highlights on set outings include historic sites like Ben Franklin's house, but families can customize explorations, too. 877.558.9671, www.freeandfriendlytours.com



One of many history-themed tours in Philadelphia

(FROM TOP) ©BRENT HOFACKER/SHUTTERSTOCK; J. FUSCO /VISIT PHILADELPHIA®; (FACING PAGE) ©MICHELLE/SHUTTERSTOCK



RETAIL THERAPY

Let's Get Physical

Do your feet a favor this summer and trade your stilettos for a pair of sneakers. With the merging of streetwear and high fashion, kicks are now comfortable enough to traverse the city, yet chic enough to wear anywhere without compromising on style. At independent boutique **Lapstone & Hammer** (1106 Chestnut St., 215.592.9166, www.lapstoneandhammer.com), find just the thing in finely crafted footwear, like the Filling Pieces line, designed by a Dutch architect and handmade in Portugal with Italian leather. Each pair blends athletic and stylish elements in striking ways, such as a salmon scale, woven leather shoe topping a Margom vulcanized rubber Kobe ripple sole. Lapstone & Hammer is also known for reissues of retro styles in new colorways; locals camp out for weekly drops of Jordans or Nikes that sell out instantly. For more athletic-inspired threads, read on.

STUDIO WORKOUTS

Start your search for gear at popular shops like Athleta (1722 Walnut St.), Lululemon Athletica (1720 Walnut St.) and Cameo Water Wear (1625 Chestnut St.), which outfit everything from a barre class to water aerobics.

RUNNERS AND WALKERS

Philadelphia Runner caters to all running levels with friendly and expert fittings for everything from sneakers to sports bras. Joggers also find collections from big brands like Nike's Epic and The North Face's Better Than Naked, plus specialty items like Feetures no-blisters socks. The mini-chain is equally welcoming to walkers and carries a selection of looser fitting tops and longer shorts appropriate for brisk ambles around town. *Multiple locations*

FAMILY OUTINGS

I. Goldberg Army & Navy may not have fancy décor like its Center City counterparts, but they do have three important things everyone

looks for: quality, service and great prices. "From nose to toes," I. Goldberg outfits the whole family for active pursuits at the gym or on the trail without breaking the budget. 1300 Chestnut St.

CYCLISTS

Specializing in bikes from the 1970s through 1990s, VIA Bicycle offers vintage bikes, biking gear, racing team jerseys and cycling caps from past eras. These rare, high-quality pieces (the jerseys are often knit in merino wool) fly out of the store with collectors who seek out companion clothing for their retro rides. 622 S. Broad St.

FASHION-FOCUSED

For stylish workout clothes without the high prices, head to Century 21. In addition to carrying a large assortment of men's and women's name brands at up to 75 percent off retail, this iconic department store also carries highly sought after, but hard to find, boutique brands like Koral, Marc New York Performance and Nanette Lepore. 821 Market St.



(FROM LEFT) COURTESY LAPSTONE & HAMMER; COURTESY PHILADELPHIA RUNNER



ON THE GO

Shore Bets

Coastal New Jersey beckons with seaside eateries that taste of summer.

Olón



HOOKED UP SEAFOOD

With its strawberry-red roof adorned with a cutout of a giant crab and sign advertising, "We kill it, we grill it," this seasonal seafood market/no-frills restaurant isn't exactly aiming for obscurity, but the place still feels like a delightfully under-the-radar discovery. A dry-erase board lists the day's catch plus sides, like sugar-bomb corn on the cob, sautéed summer squash or garlicky Caesar salad, all served on paper plates. 1044 W Rio Grande Ave., Wildwood, N.J., 609.522.2722, hookedupseafood.com

OLÓN

Any sense of time or place fades as you wander from the parking lot of the Tropicana in Atlantic City, into the Quarter, the hotel's Cuban-themed entertainment complex. When you round a bend into this Jose Garces restaurant, there's no mistaking where you are. An uninterrupted row of floor-to-ceiling windows frames the dining room revealing ocean views. On the menu, find hits from Chifa, the Peruvian restaurant Garces closed in Philly

years ago—like pandebono, cheesy Colombian yucca-flour rolls, served with sticky, hot-and-sweet guava butter. 2831 Boardwalk, Atlantic City, N.J., 609.340.4050, olonrestaurant.com

THE DIVING HORSE

The blue bloods of Seven Mile Island, the barrier atoll that comprises Avalon and Stone Harbor, turn out in print-and-pastel droves to this lovely beachy-chic bistro with an outdoor patio and citified seafood menu. Here, the kitchen sends out dishes that revolve around Jersey's finest: corn, scallops, peaches, tomatoes, oysters and clams. 2109 Dune Drive, Avalon, N.J., 609.368.5000, thedivinghorseavalon.com

CARDINAL BISTRO

At this BYOB, chef Michael Brennan and his father, Thomas Brennan, a casino food-and-beverage veteran, fill the menu with fine-dining ambition. Dishes change from week to week and involve ingredients like roasted hare and salsify foam. 6525 Ventnor Ave., Ventnor City, N.J., 609.541.4633, no website

Fresh Catches

Philadelphia may be an urban landscape that can get a bit sticky in the summer, but it's very much a year-round town with great activities happening straight through August. That said, recreation seekers often decamp to the Jersey Shore, merely an hour's drive to the east to Atlantic City (the closest Shore point to Philly) and down to the tip of Cape May. Along the way, the wave-lapped coast reveals stellar Shore restaurants—and we're not talking about boardwalk fare. From local favorites to celebrity chef standouts, here's our somewhat subjective list of top spots for a taste of summer.

(FROM TOP) ©JOSEPH SOHM/SHUTTERSTOCK; COURTESY OLÓN

the where guide

Shopping | August



Rikumo

It makes sense that Yuka and Kaz Morihata, the husband-and-wife founders of this home and gift shop in Center City, are graduates of the prestigious Rhode Island School of Design. Everything in the minimalist store bears the owners' keen eye for simple, clean lines. An added bonus? Each piece—from the dishware to the textiles

and even the tea—are sourced from artisans in Japan with centuries of craft-making history behind them. Curious visitors wanting to immerse themselves in these traditional arts attend monthly, hands-on workshops, where they learn techniques like shibori dyeing and wet-fold origami. 1216 Walnut St., 215.609.4972. Map 1, I5



Art Star

This Northern Liberties storefront feels like a local art gallery meets an artisan boutique. Inside, shoppers browse handmade clothing, jewelry and accessories, plus gifts like dolls, ceramics and prints you won't likely find elsewhere. www.artstarphilly.com. 623 N. Second St., 215.238.1557. Map 1, K2

Apparel-Men

COMMONWEALTH PROPER—Expert style consultants work with individuals to create not only custom suits, but also shirts and even casual pieces designed to fit like a glove. By appt. only M-F 10 am-6 pm, Sa-Su 10 am-4 pm. www.commonwealthproper.com. 1839 Chestnut St., second floor, 267.319.1741. Map 1, G5

DAMARI SAVILE—Eagles safety Malcolm Jenkins and entrepreneur Jay Amin's menswear shop appeals to sharp dressers looking for a bit more detail in their outfits. Their 3,000-square-foot space offers ready-to-wear looks, but also a made-to-measure shop for custom pieces. A whiskey cellar, conference room and kitchen let gents host sartorially inclined events, too. M, Th, Su by appointment. Tu-W, F 10 am-7 pm, Sa 11 am-6 pm. www.damarisavile.com. 709 Walnut St., 267.218.5760. Map 1, J5

DISTANTE—Since 1983, this boutique has been offering the latest in business attire and upscale looks, plus custom outfits made in Naples, Italy. By appt. only. Call to reserve. www.distanteclothing.com. 1510 Sansom St., 215.545.2850. Map 1, H5

DUDES BOUTIQUE—This specialty boutique located in Center City has one of the largest exotic skins, furs, and European import selections in the U.S., including snake, ostrich, crocodile, alligator, stingray, chinchilla, beaver and fox textures. Shop cowboy boots, accessories and men and women's apparel. Open M-Th noon-8 pm, F-Sa noon-9 pm, Su noon-7 pm. www.dudesboutiqueonline.com. 646 South St., 215.928.0661. Map 1, J7

HENRY A. DAVIDSEN—This tailor and custom clothier located one block from Rittenhouse Square also offers image consulting and ready-to-wear selections, including cufflinks, pocket squares and rounds, ties and more. By appointment only. www.henyrydavidson.com. 1701 Spruce St., 215.310.0219. Map 1, G6

P'S & Q'S—Scope out the hand-picked, premium items at this family-owned and operated menswear shop, which carries a large inventory of casual and work-ready looks by in-demand brands including Patagonia, Norse Projects, Kikkerland and Herschel Supply Co. M-Sa noon-7 pm, Su noon-6 pm. www.psandqs.com. 820 South St., 215.592.0888. Map 1, I7

Apparel-Men & Women

323 ARCH STREET FASHION COLLECTIVE—This "work/shop" concept is run by designers who create items in house. Shoppers browse a collection of locally made women's clothing, accessories and jewelry, all within view of the studio. Tu-Sa noon-5 pm. www.323arch.com. 323 Arch St., 215.546.5975. Map 2, D2

BOYDS PHILADELPHIA—Boyd's is one of the country's largest men's stores and the city's largest designer women's store, showcasing the likes of T By Alexander Wang, Gucci Fragrance, Pashma, Manolo Blahnik and Zac Zac Posen. Amenities include free custom alterations and free valet parking. M-Sa 9:30 am-6 pm, W 9:30 am-8 pm. www.boydsphila.com. 1818 Chestnut St., 215.564.9000. Map 1, G5

CACTUS COLLECTIVE—Located along Fashion Row in Queen Village, this eclectic communal store gives shoppers a taste of Philly's indie style with a mix of vintage and locally made boho clothing, jewelry and gifts. Treasure hunters also score original art in the rotating gallery at the back of the shop. W-M noon-7 pm. 739 S. Fourth St., 267.908.4178. Map 1, K7

(FROM LEFT) COURTESY RIKUMO; COURTESY ART STAR



NO MATTER WHAT TEAM YOU'RE ROOTING FOR ALWAYS GO ORANGE.



Skip parking and traffic hassles. Let SEPTA get you to the game. The Broad Street Line offers quick service and unbeatable convenience to all of the events at the Sports and Entertainment Complex in South Philly. Plus it runs 24 hours on weekends!

LEARN MORE AT ISEPTAPHILLY.COM

SHOPPING 

CHARLIE'S JEANS—Owner Sebastian McCall's "Best of Philly 2011" (Philadelphia Magazine) shop is stocked with sought-after lines of designer denim. M-W 11 am-7 pm, Th-Sa till 8 pm, Su 11 am-6 pm. www.charliesjeans.net. 233 Market St., 215.923.9681. Map 1, K5

CRASH BANG BOOM—This indie shop just off of South Street carries punk rock clothing and accessories for guys and gals alike. Find leather jackets, plaid pants and rock T-shirts from brands including Lip Service, Tripp NYC and Switchblade plus studded jewelry, edgy shoes and rock memorabilia. M-Tu, noon-7 pm, W-Th, noon-8 pm; F-Sa, noon-9 pm; Su, noon-6 pm. www.crashbangboomonline.com. 528 S. Fourth St., 215.928.1123. Map 1, K7

HATS IN THE BELFRY—This local chain offers a large selection of men's and women's dress and casual toppers from brands including Stetson, Giovannio and styles from the hat company's own line. M-Sa 10 am-7 pm, W 10 am-8 pm, Su 11 am-6 pm. www.hatsinthebelfry.com. 1824 Chestnut St., 215.922.0303. Map 1, G5

PLATINUM—Since 1999, this one-stop shop has been offering high-quality name-brand clothing from labels like 7 For All Mankind, Diesel, Lacoste, Scotch & Soda and Hugo Boss. Su-M 11:30 am-8 pm, Tu-Th 11:30 am-9 pm, F-Sa 11:30-10 pm. www.shopatplatinum.com. 526 South St., 215.599.7528. Map 1, J7

SUGARCUBE—Locally owned, beautifully spacious and always inviting, Sugarcube is known for inspired fashion for men and women by independent designers and vintage styles. You might find such labels as A.P.C., Dunderdon, Frenzii, Kim Schalk, Steven Alan, Pendleton and True Grit. M 11 am-7 pm, Tu-Sa noon-7 pm, Su noon-5 pm. www.sugarcube.us. 124 N. Third St., 215.238.0825. Map 1, K4

VINCE—This chic luxury apparel store is committed to producing everyday basics with enduring style and quality for both men and women. Shop the iconic essentials collection or the vast selection of ready-to-wear clothing and accessories. Open M-W 10 am-6 pm, Th-Sa 10 am-7 pm, Su noon-5 pm. www.vince.com. 1701 Walnut St., 215.220.4965. Map 1, G5

Apparel-Women

ELLELAURI—Located in the heart of the fashion-forward Rittenhouse Square neighborhood, this chic women's clothing brand is known for offering modern looks in elegant silhouettes and a sophisticated color palette at affordable prices. M-Sa 10 am-7 pm, Su noon-5 pm. www.ellelauri.com. 114 S. 19th St., 267.457.5939. Map 1, G5

THE GEISHA HOUSE—This chic Old City boutique carries a wide range of brands, among them Australian labels, including Faithfull the Brand, Knot Sisters and The Fifth Label. Whether you're looking for edgy, bohemian or feminine pieces, knowledgeable and friendly shop owner Cortney Cohen helps steer shoppers in the right direction. Su-M noon-5 pm, Tu-F 11 am-7 pm, Sa 11:30 am-7 pm. www.hellogeisha.com. 149 N. Third St., 267.886.8110. Map 1, K4

JOAN SHEPP—With more than 40 years in the biz, Shepp purveys women's designer apparel and accessories from top (but harder-to-find) European and American brands, including Dries van Noten, Rick Owens and Yohji Yamamoto. M-Tu, Th-Sa



THE GUIDE

10 am-6 pm, W 10 am-8 pm, Su noon-5 pm.
www.joanshepp.com. 1811 Chestnut St.,
215.735.2666. **Map 1, H5**

LOU LOU BOUTIQUE—This small chain known for offering a selection of stylish women's accessories in a boutique setting is new to the Midtown Village neighborhood. In addition to three signature lines, shoppers can find designer-inspired jewelry, handbags, scarves, hats and sunglasses, plus a wide range of gift items. Since prices are affordable, a few items snagged here won't break the bank. M-Th 11 am-8 pm, F-Sa 10 am-9 pm, Su 11 am-6 pm. www.loulouboutiques.com. 143 S. 13th St., 267.538.1267.

MOON + ARROW—Shoppers could spend hours browsing through this Queen Village boutique, stocked to the rafters with interesting finds like hand-made statement jewelry, refinished antique furniture and vintage duds—all with a focus on ethical sourcing. Look for workshops and events, and don't miss the shop's newest addition, Little Moon, a children's shop located just down the street. Tu-Sa 11 am-7 pm, Su till 5 pm. www.moonandarrow.com. 754 S. Fourth St., 215.469.1448.

SMÅK PARLOUR—This Old City boutique is run by friends/fashion designers Abby Kessler and Katie Loftus, who share a style sensibility they describe as "vintage-inspired, girly, fun and flirty." Hip gals head to this candy-pink store for fabulous tops, dresses, jewelry, handbags and shoes sure to look cute by day or night. Open M-Th 11 am-7 pm, F-Sa 11 am-8 pm, Su noon-6 pm. www.smakparlour.com. 219 Market St., 215.625.4551. **Map 1, K5**

SOPHY CURSON—This salon-like spot carries a well-curated collection of gowns, day-to-evening looks, jewelry and accessories by Blumarine, Edward Achour and Tom and Linda Platt. M-F 9:30 am-5:30 pm, Sa 9:30 am-5 pm. www.sophycurson.com. 19th and Sansom streets, 215.567.4662. **Map 1, G5**

STEEL PONY—Longtime fashion insiders Joanne Litz and Dennis Wolk offer eco-friendly boho fashions and accessories that you can see being hand-dyed and sewn right in the store. Many items are one-of-a-kind and all are made in Philly with sustainable, locally sourced materials. Visit www.steelpony.com for store hours. www.steelpony.com. 758 S. Fourth St., 215.467.6065. **Map 1, K7**

VAGABOND BOUTIQUE—Located in Old City, this boutique and yarn shop highlights hand-knit sweaters, jumpsuits and crop tops with a bohemian vibe, plus a chic assortment of accessories. M-Sa 11 am-7 pm, Su till 5 pm. www.vagabondboutique.com. 37 N. Third St., 267.671.0737. **Map 1, K4**

Bath & Beauty

BLUEMERCURY—This East Coast company carries high-end cosmetics, skincare, haircare and fragrances with wise counsel by staff in a pressure-free environment. The brand's Tropicana location in Atlantic City has a full spa offering treatments like crystal facials, aromatherapy massages, detoxifying sea salt scrubs and more. M-Sa 10 am-7 pm, Su 11-6 pm. Spa Hours: M-Sa 10 am-7 pm, Su 11-6 pm. www.bluemercury.com. 1707 Walnut St., 215.569.3100. **Map 1, G5**

KIEHL'S—This renowned company uses the finest ingredients and unique formulations in their skin, hair and body care products. Stop by the shop at

the Shops at Liberty Place. M-Sa 10 am-7 pm, Su noon-6 pm. www.kiehls.com. 1625 Chestnut St., 215.636.9936. **Map 1, G5**

L'OCCITANE—Francophiles and other stylish shoppers will enjoy L'Occitane's luxury beauty, bath and body products, which draw inspiration from the fragrances and culture of Provence. M-Sa 10 am-7 pm, Su, 11 am-6 pm. www.loccitane.com. 1606 Walnut St., 215.985.0279. **Map 1, H5**

LUSH FRESH HANDMADE COSMETICS & SPA—The much-loved international cosmetics chain is known for its amazing smelling balms and butters made with natural ingredients and even

boasting expiration dates. This location also boasts a signature spa where visitors can indulge in a total-sensory experience with mood-altering therapies. M-Th 10 am-8 pm, F-Sa 10 am-9 pm, Su 11 am-7 pm. www.lushusa.com. 1525 Walnut St., 215.546.5874. **Map 1, H5**

PALO SANTO WELLNESS BOUTIQUE—Named for the Spanish terms for "holy wood," this modern apothecary offers a sanctuary for the harried with herbs, tinctures and all manner of feel-good concoctions. Custom blends offer help for special cases, while soothing scented candles and other decor bring some inner calm into the home. A

SHOPPING



sister space located nearby offers yoga and workshops. Call for hours. www.palosantowellnessboutique.com. 1713 S. 12th St., 215.952.0360. **South of Map 1, I8**

Books & Music

AIA BOOKSTORE & DESIGN CENTER—Located inside the Philadelphia Center for Architecture + Design, this store stocks tomes on design as well as distinctive gifts and products for home and office. M-Sa 10 am-6 pm. www.aiabookstore.com. 1218 Arch St., 215.569.3186. **Map 1, I4**

ATOMIC CITY COMICS—This funky shop carries a wide selection of comics, graphic novels, back issues, manga and T-shirts, plus movies, toys and games. Look for frequent in-store events, too, including book signings. M-Tu noon-9 pm, W-Sa, 11 am-11 pm, Su 11 am-9 pm. www.bestphillycomics.com. 638 South St., 215.625.9613. **Map 1, J7**

BOOK CORNER—Browse more than 50,000 titles at this welcoming shop, located directly behind Philadelphia's Central Library near the Benjamin Franklin Parkway. Find new, rare and gently used tomes in all genres, whether your taste runs contemporary or classic. M-Sa 10 am-6 pm. www.facebook.com/Book-Corner-22079624193/. 311 N. 20th St., 215.567.0527. **Map 1, G3**

HEAD HOUSE BOOKS—Books covering every surface and a friendly staff help create an inviting space for browsing. Enjoy a free cup of coffee and settle in for a few hours. M-Sa 10 am-7 pm, Su 10 am-5 pm. www.headhousebooks.com. 619 S. Second St., 215.923.9525. **Map 1, K7**

JOSEPH FOX BOOKS—This charming spot in Center City offers an array of selections from architecture and non-fiction to literature and poetry. M-Sa 9:30 am-6 pm, W 9:30 am-7 pm. www.foxbookshop.com. 1724 Sansom St., 215.563.4184. **Map 1, G5**

UNIVERSITY OF PENNSYLVANIA BOOKSTORE—This giant book superstore carries over 80,000 titles, plus school supplies, gifts and UPenn apparel. M-F 8:30 am-9:30 pm, Sa 10 am-9:30 pm, Su 10 am-8 pm. www.upenn.bncollege.com. 3601 Walnut St., 215.898.7595. **Map 1, C5**

VINTAGE INSTRUMENTS—Since 1974, Vintage Instruments has focused on fine acoustic instruments, featuring a wide selection of C.F. Martin & Co. guitars for everyone from weekend pickers to seasoned professionals. Plenty of treasures abound in this 19th-century architectural treasure, from ukuleles to banjos and mandolins. Accessories include cases, strings, straps and much more. M-F 10 am-5 pm. www.pickamartin.com. 507 S. Broad St., 215.545.1000. **Map 1, H6**

Children's

BORN YESTERDAY—This boutique on Rittenhouse Square carries clothing and toys for infants and children from a wide range of European and domestic designers. M-Sa 10 am-6 pm, Su 11 am-5 pm. www.bornyesterdaykids.com. 1901 Walnut St., 215.568.6556. **Map 1, G5**

MOMO'S TREE HOUSE—Wrangling kids into this Old City boutique won't be a hassle—Momo's not only provides toys from hard-to-find specialty makers, but encourages kids to test them out on the spot. M-Th 11 am-6 pm, F 11 am-7 pm, Sa

Contessa's French Linens

- Authentic French tablecloth business
- One-of-a-kind, stain resistant linens
- Quimper Products
- Authentic French Jewelry
- Polish Pottery

Now selling machine washable linens made, designed and sewn in the South of France

Reading Terminal Market
12 & Arch Streets, 3rd Ave., Row B
610.306.4507 • contessasfrenchlinens.com

Calling all Readers Leaders + Eaters

With more than 30 shops, 40 restaurants, and 15 sports and culture venues, a day at Penn could take you anywhere.

Shop smarter.
Shop Penn.

#SHOPPENN
@SHOPSATPENN



THE GUIDE

10 am-7 pm, Su noon-5 pm. Fittler Square hours vary. www.momstreehouse.com. 205 Arch St., 267.457.2803. **Map 1, K4**

Crafts

BEADWORKS—A large selection of beads, gemstones, tools and notions helps DIYers create their own jewelry with the help of knowledgeable staff. Su-W, F noon-6 pm, Th, Sa noon-7 pm. www.beadworkphiladelphia.com. 619 E. Passyunk Ave., 215.413.2323. **Map 1, K7**

LOOP—This colorful store offers natural fiber, hand-painted and luxury yarns for knitting and crocheting. The shop also carries a full range of patterns, needles and notions and offers classes for all skill levels. M-F 11 am-6 pm, Sa-Su 11 am-5 pm. www.loopyarn.com. 1914 South St., 215.893.9939. **Map 1, G7**

PENNSYLVANIA GUILD OF CRAFTSMEN—One of the nation's largest and most recognized craft guilds offers a variety of classes from sketching to blacksmithing, and organizes several craft shows, including the annual Rittenhouse Square Fine Craft show. www.pacrafts.org. 335 N. Queen St., Lancaster, Pa., 717.431.8706.

RITTENHOUSE NEEDLEPOINT—With 1,100 square feet of space, this shop carries all manner of tools and notions for needlepoint, including hand-painted canvases, top-quality fibers, accessories, books and even finished items. M-Sa 10:30 am-5:30 pm, W until 7 pm. www.rittenhouseneedlepoint.com. 1216 Arch St., second floor, 877.764.6880. **Map 1, G5**

Gifts & Decor

THE ART SHOP AT MOORE COLLEGE OF ART & DESIGN—Within this formidable arts-education institution is an excellent shop dealing in jewelry, scarves and accessories, as well as prints, and greeting cards. The art and design pieces are created by Moore's emerging and established alumni in addition to current students. M-Sa 10 am-6 pm. www.moore.myshopify.com. 1916 Race St., 215.965.8586. **Map 1, G4**

ART STAR—Admire handmade clothes, jewelry and accessories, plus dolls, ceramics and prints at this gallery-style boutique in Northern Liberties. Tu-Sa 11 am-7 pm, Su noon-6 pm. www.artstarphilly.com. 623 N. Second St., 215.238.1557. **Map 1, K2**

BLENDO—This charming collection of vintage and modern day gifts includes everything from handbags, to stationary and pottery. M-Sa 11 am-6 pm, Su 11 am-5:30 pm. www.shopblendo.com. 1002 Pine St., 215.351.9260. **Map 1, I6**

CONTESSA'S FRENCH LINENS—Find lovely imported tablecloths and tea towels from Provence, Brittany and other French regions, plus one-of-a-kind aprons, jewelry and rosemary baskets at this shop in the historic Reading Terminal Market. M-Sa 10 am-6 pm, Su 10 am-3:30 pm. www.contessasfrenchlinens.com. 51 N. 12th St. in Reading Terminal Market, 610.306.4507. **Map 1, I4**

HELLO WORLD—Fans of mid-century modern head to this University City storefront for retro furnishings, funky fittings and accessories like vintage dominoes, plus gifts under \$25. M-F 10 am-7 pm, Sa-Su 11 am-5 pm. www.shophelloworld.com. 3610 Sansom St., 215.382.5207. **Map 1, C5**

THE MUSEUM STORE AT PAFA—The academy's gift shop stocks items inspired by exhibitions, plus accessories, jewelry, stationery and handcrafted decorative objects. Tu-Sa 9:30 am-5:30 pm, Su 11 am-5:30 pm. www.pafa.org/store. 128 N. Broad St., 215.972.2075 **Map 1, H4**

THE MUSEUM STORE AT THE PHILADELPHIA MUSEUM OF ART—At the museum's gift shop, find items inspired by past and current exhibitions, including posters, prints, jewelry, music and DVDs, toys, housewares, clothing and accessories. Tu-Su 10 am-5 pm; W, F until 8:45 pm. www.philamuseum.org/shopping. 2600 Benjamin Franklin Parkway, 215.684.7376. **Map 1, E2**

OLC—For more than 25 years, OLC has been providing the finest in contemporary European lighting and furniture. Based in Old City, this shop showcases furniture from the likes of Cassina and B&B Italia, lighting by Flos and Ingo Maurer. Tu-Sa 10 am-5 pm. www.olc152.com. 152 N. Third St., 215.923.6085. **Map 1, K4**

OMOI ZAKKA SHOP—Inspired by cozy Japanese-style gift shops, this off-Rittenhouse boutique stocks a carefully curated selection of "uncommon" accessories for home and office. M noon-7 pm, Tu-Sa 11 am-7 pm, Su noon-6 pm. www.omoionline.com. 1608 Pine St., 215.545.0963. **Map 1, H6**

THE PAPERY—This Old City stationery mecca carries an upscale collection of paper goods and distinctive gifts, whether the occasion calls for classy or kitschy. Browse the wide selection of greeting cards, Italian leather albums, wax initial stamps and organizers. M-F 11 am-7 pm, W 11 am-8 pm, Sa 10 am-6 pm. www.paperyofphilly.com. 1219 Locust St., 215.922.1500. **Map 1, K4**

PHILADELPHIA INDEPENDENTS—At this Old City gift shop, you won't find the usual Phillies T-shirts and Liberty Bell snow globes. Philadelphia Independents stocks only handmade items by local makers, including jewelry, ceramics, accessories, home decor, artwork and baby gifts. M-Sa 11 am-7 pm, Su 11 am-5 pm. www.philadelphiaindependents.com. 35 N. Third St., 267.773.7316. **Map 1, K4**

SCARLETT ALLEY—This charming gift boutique is a gal's dream, offering a selection of beautiful jewelry, handbags, leather goods, fragrances, lotions, stationery and home accessories. M noon-5 pm, Tu-F 11 am-7 pm, Sa 10 am-6 pm, Su noon-5 pm. www.scarlettalley.com. 241 Race St., 215.592.7898. **Map 1, K4**

TOWNHOME—This sophisticated shop carries stylish gifts for him, her, baby and home. The carefully edited selection includes cool note cards, hip coffee table books, candles, jewelry, home accents and adorable baby clothes and toys. M-Sa, 10 am-6 pm. www.townhomeonline.com. 1616 Walnut St., 215.972.5100. **Map 1, H5**

URBAN JUNGLE—Plant lovers rejoice! This nursery housed inside a former garage inspires with ideas, advice and the greenery to create gardens in the city. Workshops include lessons on topics like creating terrariums. M-Th 10 am-7 pm, F till 8 pm, Sa 9 am-8 pm, Su 9 am-6 pm. www.urbanjunglephila.com. 1526 E. Passyunk Ave., 215.952.0811. **Map 1, I8**

URBAN PRINCESS BOUTIQUE—This store is often recognized as a top spot for one-of-a-kind, affordable clothing and gifts. Inside, shop products

by local artisans, like organic soaps and beauty products, jewelry, handbags and clothing. New inventory arrives almost daily. M-Sa noon-7 pm, Su noon-5 pm. www.urbanprincessboutique.com. 620 S. Fourth St., 267.909.8317. **Map 1, K7**

VERDE—A wide variety of colorful jewelry, accessories, perfume and whimsical gifts fill this shop. Head to the rear to watch chocolatiers make Marcie Blaine artisanal truffles, then select a few treats to take home. M-Sa 11 am-8 pm, Su noon-6 pm. www.verdephiladelphia.com. 108 S. 13th St., 215.546.8700. **Map 1, I5**

WORKSHOP UNDERGROUND—Taking queues from his previous gig at the Metropolitan Museum of Art, owner Ruben Luna sets up his shop like a museum. High-end artistic pieces seamlessly mix in with affordable knick-knacks. Come here for jewelry, apparel, home decor and gifts. W-Th noon-7 pm, F-Sa 11 am-8 pm, Su 11 am-5 pm. www.workshopunderground.com. 1544 South St., 215.987.3534. **Map 1, H6**

Gourmet & Specialty Foods

DI BRUNO BROTHERS—The original Italian Market outpost of this Philly mecca for world-class cheese bustles day and night. At the Chestnut Street location, find a gourmet food emporium with takeout panini, gelato and additional specialty items. Hours vary by location. www.dibruno.com. The Market at Comcast Center, 1701 JFK Blvd., 215.531.5666. **Map 1, G4**; 1730 Chestnut St., 215.665.9220. **Map 1, G5**; Italian Market location: 930 S. Ninth St., 215.922.2876. **Map 1, J8**; The Franklin, 834 Chestnut St., 267.519.3115.

GREEN AISLE GROCERY—A teeny tiny grocery store with an ambitious stock of products, including small-batch artisan goods from local and regional purveyors. Don't miss the hummus from Zahav, a local restaurant run by a James Beard Award-winning chef. M-F noon-8 pm, Sa 11 am-8 pm, Su noon-7 pm. www.greenaislegrocery.com. 1618 E. Passyunk Ave., 215.465.1411.

IOVINE BROTHERS PRODUCE—This urban market was founded more than 15 years ago in the historic Reading Terminal Market, and continues to provide a wonderful selection of local, domestic and international goods. M-Sa 8 am-6 pm, Su 9 am-5 pm. www.iovine.com. Reading Terminal Market, 1136 Arch St., 215.928.4366. **Map 1, I4**

LORE'S CHOCOLATES—While in the historic district, indulge your sweet tooth with this candy shop's peanut butter balls, vanilla caramels and Liberty Bell-shaped chocolates among other tasty selections. M-F 9 am-5:30 pm, Sa 10 am-4 pm. www.loreschocolates.com. 34 S. Seventh St., 215.627.3233. **Map 1, J5**

MOM'S ORGANIC MARKET—This East Coast-based family-run chain started in 1987 and now counts stores in four states, plus Washington, D.C. The outpost in Philly stocks the grocer's namesake organic foods, plus a vegetarian eatery, a bee-keeping section and a beer growler filling station. Daily 8 am-9 pm. www.momsorganicmarket.com. 34 S. 11th St., 215.709.0022. **Map 1, I5**

ROCKET FIZZ—Feed your nostalgia at this retro candy shop, offering everything from candy dots and whirly pops to bulk salt water taffy, plus, a variety of soda selections in flavors like bacon, s'mores and mud pie. M-Th 11 am-7 pm, F-Sa 11 am-9 pm,



Piazza Sempione
Blumarine
Fabiana Fillipi
Tom & Linda Platt
Catherine Regehr
Sympli
Wolford
Planet by Lauren G
Up Pants
Sizes 2-18

Daytime to Evening
Summer 2018

Sophy Curson

19th & Sansom Streets 215.567.4662

Get travel tips and the city's inside scoop, delivered right to your inbox!

Sign up at wheretraveler.com/newsletter-signup

where
Local guides. Worldwide.

wheretraveler.com

we ♥ connected
The app that brings couples together.
Only with We-Vibe

WE VIBE

Tickle any fancy with erotic treasures for adult pleasure for both men and women at The Pleasure Chest. This adult boutique located off Rittenhouse Square has been the best resource for quality products and knowledge since 1974.

Featuring brands such as, We-Vibe, Lelo, Liberator, Fleshlights, Tantus and many more for all of your intimate needs.


THE PLEASURE CHEST

2039 Walnut Street
215.561.7480
www.pleasurechestphilly.com

SHOPPING



Su 11 am-6 pm. www.rocketfizz.com. 302 Arch St., 215.650.3163. **Map 1, K4**

TEUSCHER CHOCOLATES OF SWITZERLAND—A bright, beautiful store featuring gorgeous hand-made Swiss chocolates and exquisite champagne truffles. Fantasy packages, gift wrapping, shipping and custom orders available. M-Sa 10 am-6 pm, Su noon-5 pm. www.teuscherphiladelphia.com. The Shops at The Bellevue, 200 S. Broad St., 215.546.7600. **Map 1, H5**

Jewelry

ADORNAMENTI—This warm and inviting shop on Antique Row carries a beautiful array of distinctive jewelry, from delicate pieces crafted with finely wrought silver to opulent necklaces with semiprecious stones. M, W-Sa noon-6 pm, Su noon-5 pm. 1106 Pine St., 215.922.2722. **Map 1, I6**

BELLA TURKA—The local owners of this jewelry shop regularly travel around the world in search of chic baubles, like gold coin necklaces, cocktail rings and chunky stone cuffs, and also offer funky items from select domestic designers. M-Sa 11 am-8 pm, Su noon-6 pm. www.bellaturka.com. 113 S. 13th St., 215.560.8733. **Map 1, I5**; 1700 Sansom St., 215.560.8734. **Map 1, G5**

CALEB MEYER—Visit this shop for exquisite, hand-crafted gold and platinum jewelry and fine American crafts. Caleb Meyer offers custom jewelry and gem buying for setting in their original designs. Tu-F 10 am-5:30 pm, Sa 10 am-5 pm. www.calebmeyer.com. 8520 Germantown Ave., 215.248.9250.

LAGOS—Philadelphia-based jeweler Lagos' one-and-only flagship store has been a fixture, located just steps from Rittenhouse Square. This jewel-box shop features award-winning collections in sterling silver and 18-kt. gold. Steven Lagos has been designing beautiful pieces accented with gemstones, diamonds and pearls for 41 years. Friendly and knowledgeable staff makes the shopping experience a pleasure. M-Sa 10 am-7 pm, Su noon-6 pm. www.lagos.com. 1735 Walnut St., 215.567.0770. **Map 1, G5**

MARYANNE S. RITTER JEWELERS—Open since 1909, this store's experts create custom designs for fine diamonds and gemstones, and offer quality jewelry at affordable prices. Look for a large selection of cultured freshwater and saltwater pearls. M-Tu and Th-F 10 am-5 pm, W 10 am-6 pm, Sa noon-5 pm. www.maryannesritterjewelers.com. 704 Sansom St., 215.701.6255. **Map 1, J5**

TOURNEAU—This international brand offers more than 100 watch brands, including Cartier, Ferragamo, Gucci, Movado and 8,000 unique styles for men and women. M-Sa 10 am-9 pm, Su 11 am-6 pm. www.tourneau.com. Plaza at King of Prussia Mall, 160 N. Gulph Road, King of Prussia, Pa., 610.491.8801. **Map 4, A3**

Salons & Spas

EVIAAMA LIFE SPA—At this holistic day spa near Rittenhouse Square, you'll find award-winning organic facials, massages, wraps, waxing services and a beautiful boutique full of stylish, eco-friendly goods. Eviaama is Pennsylvania's only Dr. Hauschka skin care treatment center. M 11 am-7 pm, Tu-Th 10 am-7 pm, F 9 am-7 pm, Sa 9 am-6 pm, Su 11 am-6 pm. www.eviama.com. 109 S. 13th St., Second floor, 215.545.3344. **Map 1, I4**



FLOTATION PHILLY—This high-tech spa takes relaxation to another level. Enter the sensory-deprivation tanks—enclosed chambers filled with 10 inches of Epsom-salt water—and float for at least an hour. Have no fear—you can choose whether to float with the lights off or on (dimly). Memberships from \$39/month. Drop-ins from \$59. Hours vary by appointment. Reserve online. www.flotationphilly.com. 534 E. Girard Ave., 609.923.1913.

JUJU SPA & ORGANICS—A short stroll from South Street, this inviting spa specializes in all-natural skin care products, non-toxic manis-pedis, spa treatments and other pampering services. W, F 10 am-7 pm, Th 10 am-8 pm, Sa 10 am-6 pm, Su noon-7 pm. www.jujusalon.com. Salon, 713 S. Fourth St., 215.238.6080. **Map 1, K7**

MICUMBIA ORGANICA—This top-rated nail salon operated by a husband-and-wife team offers water- and soy-based products for mani-pedis, foot massages and Brazilian waxing. By appointment. M-Tu, F-Sa 10 am-6 pm, W-Th 11 am-7 pm, Su 10 am-4 pm. www.micumbia.com. 328 S. 17th St., 215.735.7980. **Map 1, G6**

MOKO—In the heart of Old City, Moko is a one-stop beauty shop specializing in natural treatments and products. Services include haircare and styling, scalp treatments, facials, waxing and makeup application. While you're there, stock up on natural soaps, skincare and makeup. Su, Tu noon-6 pm, W-F 10 am-8 pm, Sa 10 am-6 pm. www.mokobeauty.com. 55 N. Third St., 215.922. MOKO. **Map 1, K4**

THE NAIL BAR—Thanks to friendly service, clean environs and complimentary Champagne or wine, basic manicures and pedicures feel like an indulgence at this second-floor Rittenhouse-area salon. Appointments recommended, but walk-ins are welcome. Tu-Th 10 am-7 pm, F 10 am-7:30 pm, Sa 10 am-6:30 pm, Su 10 am-6 pm. www.nailbarphila.com. 133 S. 18th St., 267.687.8117. **Map 1, G5**

RESCUE SPA—This upscale European-style, contemporary space specializes in massage therapy, detoxification and microdermabrasion. M-F 9 am-8 pm, Sa 9 am-7 pm, select Su 10-5 pm. www.rescuespa.net/philadelphia. 1601 Walnut St., third floor, 215.772.2766. **Map 1, H5**

TERME DI AROMA—Drawing on lessons from the ancient Mediterranean world, Terme Di Aroma specializes in aromatherapy and its effects on the body's health and well being. Tu-F 11 am-8:30 pm, Su 10 am-7 pm, Su 10 am-4 pm. www.terme diaroma.com. 32 N. Third St., 215.829.9769. **Map 1, K5**

Shoes

BENJAMIN LOVELL SHOES—Style and comfort converge in casual and dress shoes from designers including Mephisto and UGG at two convenient locations. Rittenhouse hours: M-Sa 10 am-8 pm, Su 11 am-6 pm; Old City hours: M-Sa 11 am-7 pm, Su noon-6 pm. www.benjaminlovelleshoes.com. 1728 Chestnut St., 215.564.4655. **Map 1, G5; 60 N. Third St., 215.238.1969. Map 1, K4**

BUS STOP BOUTIQUE—British-born Elena Brennan has turned her Queen Village shop into a destination for fashionable shoes for both men and women. On historic Fabric Row, this hip shoe haven carries unique and comfy styles from hard-to-find designers. M-Sa 11 am-6 pm, F 11 am-7 pm,

Su noon-5 pm. www.busstopboutique.com. 727 S. Fourth St., 215.627.2357. **Map 1, K7**

HEAD START SHOES—This luxury shoe store in Center City stocks the finest designers, including Fiorentini + Baker, Del Carlo and Vic Matie. M-Tu 10 am-6 pm, W-Sa 10 am-7 pm, Su 11 am-5 pm. www.headstartshoes.com. 126 S. 17th St., 215.567.3247. **Map 1, G5**

LAPSTONE & HAMMER—Kate Rohrer designed this only-in-Philadelphia haven for sneakerheads. While the store's collection of well-tailored menswear, grooming products and accessories have received rave reviews, what truly commands attention in this 4,000 square-foot space is its extensive sneaker collection. M-Sa 10 am-7 pm, Su noon-5 pm. www.lapstoneandhammer.com. 1106 Chestnut St., 215.592.9166. **Map 1, I5**

TOBOX SHOES—This chic local men's shop caters to the stylish and sophisticated gentleman with a great selection of shoes, accessories and leather goods. Shop the hippest brands you can't find anywhere else like John Lobb, Carmina, and Rancourt. M-Sa 9:30 am-7 pm, W till 8 pm. 1822 Chestnut St., 215.644.9435. **Map 1, G5**

UBIQ—This trendy sneaker boutique features shoes by Puma and Nike SB, plus racks of skater-inspired threads from Stüssy. M-Sa 10 am-8 pm, Su noon-6 pm. www.ubiqlife.com. 1509 Walnut St., 215.988.0194. **Map 1, H5**

Shopping Centers

THE BELLEVUE PHILADELPHIA—Inside this historic 1904 Beaux Arts building in Center City, you'll find upscale boutiques such as Tiffany & Co., Nicole Miller and Williams-Sonoma. Dining options vary from world-class restaurants like XIX and The Palm to a gourmet food court. You'll also find the state of the art The Sporting Club fitness facility and luxurious Hyatt at The Bellevue. www.bellevuephiladelphia.com. 200 S. Broad St., 215.875.8350. **Map 1, H5**

CENTURY 21—Local fashionistas have flipped for Manhattan's off-price designer department store—Philadelphia's outpost is the first and only location outside of New York and New Jersey. Snag on-trend clothing, shoes and accessories for men, women and children, and you won't even make a dent in your wallet. Plus, cosmetics, electronics and housewares. M-F 9 am-8 pm, Sa 10 am-8 pm, Su 11 am-7 pm. www.c21stores.com. 821 Market St., 215.952.2121. **Map 1, J5**

KING OF PRUSSIA MALL—The East Coast's largest retail shopping complex includes seven world-class department stores including Bloomingdale's, Lord & Taylor and Nordstrom, plus 400 specialty shops like Tourneau and restaurants. The mall is easily accessible from Routes 202, Interstate 76 and the Pennsylvania Turnpike. M-Sa 10 am-9 pm, Su 11 am-6 pm. www.kingofprussia mall.com. 160 N. Gulph Road, King of Prussia, Pa., 610.265.5727. **Map 4, A3**

THE MARKET & SHOPS AT COMCAST CENTER—The Market & Shops at Comcast Center is Center City's destination for shopping, dining and fresh foods to-go. Highlights include Di Bruno Brothers, LaScala's and Termini Bros. Also look for retail shops such as Govberg Jewelers. M-F 8 am-7 pm, Sa 8 am-5 pm. www.themarketandshopsatcomcastcenter.com. 17th Street and JFK Blvd., 215.496.1810. **Map 1, G4**

SHOP PENN—On the University of Pennsylvania campus in University City, find more than 75 national and independent retailers (Urban Outfitters, United By Blue, Amazon and Penn Bookstore), plus top-notch dining choices, art galleries and hotels. Hours vary by location. www.shopsatpenn.com. 34th through 38th streets, Chestnut to Spruce streets. **Map 1, C5 to D6**

THE SHOPS AT LIBERTY PLACE—This indoor, Center City shopping complex for fashion, jewelry, housewares and more has 55 specialty boutiques and international eateries. Retailers include Bloomingdale's The Outlet Store, ALDO Shoes and J. Crew. Take in Philadelphia from new attraction, One Liberty Observation Deck. M-Sa 9:30 am-7 pm, Su noon-6 pm. www.shopsatliberty.com. 1625 Chestnut St., between Liberty I and Liberty II office towers, 215.851.9055. **Map 1, H5**

Specialty

EYESITE—Located near Rittenhouse Square, this gallery-style optical shop offers "museum-quality" prescription eyewear and sunglasses by independent makers around the world. Find frames made of wood, horn, even leather and stone. Custom work also available. Tu-F 10 am-6 pm, Sa till 5 pm. www.eyesite-phila.com. 111 S. 18th St., 215.557.0757. **Map 1, G5**

PHILLY AIDS THRIFT—This nonprofit founded in 2005 sells an eclectic collection of donated items with proceeds going to local organizations involved in the fight against HIV/AIDS. M-Th 11 am-8 pm, F-Sa 11 am-9 pm, Su 11 am-7 pm. www.phillyaidsthift.com. 710 S. Fifth St., 215.922.3186. **Map 1, K7**

PLEASURE CHEST—Located off Rittenhouse Square since 1974, this adult boutique offers intimate toys and products for men and women including lingerie, lubricants, bachelorette goodies, harnesses, rabbits and sensual novelties. The staff is discreet, knowledgeable and friendly and will customize every shopping experience. Tu-Sa 11 am-7 pm. www.pleasurechestphilly.com. 2039 Walnut St., 215.561.7480. **Map 1, G5**

Sporting Goods & Apparel

MITCHELL & NESS—The flagship store of this world-renowned sports-gear provider offers more than 1,600 authentic styles of vintage jerseys, hats, warm-ups, jackets and so much more. Sports fans should take a turn through the store just to see the museum-quality memorabilia. M-Sa 10 am-7 pm, Su 11 am-5 pm. www.mitchellandness.com. 1201 Chestnut St., 267.273.7622. **Map 1, I5**

NOCTURNAL SKATE SHOP—One of the Philadelphia skate scene's go-to supply stops and hang-outs, opened in 2000 by X Games gold medalist Kerry Getz. Skaters will find clothes, shoes, decks, trucks, wheels and every manner of skate accessory. M-Th noon-8 pm, F noon-9 pm, Sa 11 am-9 pm, Su noon-6 pm. www.nocturnalskateshop.com. 533 South St., 215.922.3177. **Map 1, J7**

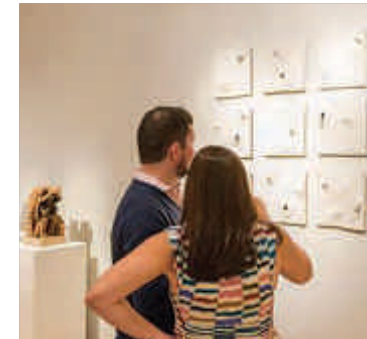
SHIBE VINTAGE SPORTS—Founded by local sports enthusiasts, this store features retro-style shirts and hats appealing to the fashion-forward sports fan. The retailer's Originals line utilizes the talents of local artists and screen printers. Worldwide shipping available. www.shibevintage sports.com. 137 S. 13th St., 215.566.2511. **Map 1, I5**

Galleries+Antiques | August



Moderne Gallery

With five floors over 20,000 square feet, this Old City studio has plenty of space for showcasing its collection of high-quality, vintage 20th-century furniture, lighting and accessories by George Nakashima and Wharton Esherick, to name just a few in-demand pieces. www.modernegallery.com. 111 N. Third St., 215.923.8536. **Map 1, K4**



Clay Studio

This gallery is known for supporting the ceramic arts through residencies, educational and outreach programs and a permanent collection. Through Aug. 28, get the inside track on works by resident artists at the Goggleworks Art Center in Reading. www.theclaystudio.org. 139 N. Second St., 215.925.3453. **Map 2, E3**



M. Finkel and Daughter

Since 1947, this family-owned shop on lovely Antique Row has been stocking a top-notch collection of antiques in an 1840s building. Inside, find 18th- and 19th-century furniture and an acclaimed collection of needlework and silk embroideries spanning the 17th to mid-19th centuries. www.samplings.com. 936 Pine St., 215.627.7797. **Map 1, I6**

Antiques Shops

ANASTACIA'S ANTIQUES—Anastacia's is brimming with affordably priced antiques and quirky collectibles of all kinds, from furnishings and lamps to dolls, books and jewelry. Staff occasionally takes shopping trips for merchandise during store hours, so call in advance. Th-Sa noon-6:30 pm, Su noon-5 pm. www.anastaciasantiques.com. 617 Bainbridge St., 215.928.9111. **Map 1, J7**

ANTIQUE SHOWCASE—Find fine European furniture, lighting accessories and objets d'art at this charming antique shop located in the ritzy Rittenhouse neighborhood. M-Sa 10 am-6 pm. www.antiqueshowcase.com. 1625 Pine St., 215.545.0860. **Map 1, H6**

ARCHITECTURAL ANTIQUES EXCHANGE—Spanning 30,000 square feet of space in the Northern Liberties neighborhood, this vast warehouse stocks a range of architectural antiques, from the late 1700s through the 1930s. Exciting items have been reclaimed from French castles and churches; others include mantels, doors, beds, carved furniture and ironwork. M-Sa 10 am-5 pm. www.architecturalantiques.com. 715 N. Second St., 215.922.3669. **Map 1, K2**

FREEMAN'S—One of the premier auction houses for fine arts and antiques is also the nation's oldest. M-Th 9 am-5 pm, F 9 am-3 pm, special office hours during auction exhibitions. www.freemansauction.com. 1808 Chestnut St., 215.563.9275. **Map 1, G5**

GARDEN GATE ANTIQUES—Another stop in Chestnut Hill, this two-story shop features a wide range of items from West African art to Steiff animals, including but not limited to vintage and antique furnishings, clothing, jewelry and books. M-Sa 11 am-5 pm, Su noon-5 pm. www.bowmanch.com/property/gardengate. 8139 Germantown Ave., 215.248.5190. **Map 3, B/C3**

GEORGE T. HOBE ANTIQUES & FINE ART—Art and artifacts from the 18th through the 20th centuries fill this cozy space to the brim. Objects sometimes even spill out onto the sidewalk for the casual passerby to admire. Tu-Th 7 am-2 pm or by appointment. 8407 Germantown Ave., 215.247.5733.

KOHN & KOHN ANTIQUES—Kohn & Kohn Antiques has been known for fine antiques in Philadelphia since 1932. Its inventory is broad with an emphasis on glass, furniture, porcelain and silver. Also check out the tobacciana collection, which includes cigarette cases, cigar cutters and elegant lighters. Open by appointment and by chance. www.kohnandkohnantiques.com. 1112 Pine St., 215.923.0432. **Map 1, I6**

NIEDERKORN ANTIQUE SILVER—For more than 25 years, Niederkorn Antique Silver has been focusing on 19th- and 20th-century fine silver. Located just off Rittenhouse Square, this tiny store brims with sterling Christmas ornaments, jewelry, tea

There's a lot more going on this August. Visit us online: wheretotraveler.com

sets and napkin rings, Judaica, desk accessories and books on the art of silversmithing. Tu-Th 11:30 am-7 pm, F-Sa 11:30 am-5:30 pm. www.nieder kornsilver.com. 244 South 22nd St., 215.567.2606. **Map 1, G6**

THE PHILADELPHIA PRINT SHOP—Pore over the impressive collection of more than 20,000 historical prints and antique maps from the 16th through the early-20th centuries. Those looking for an affordable piece of fine art will have luck here—many prints are priced under \$100. M-Sa 10 am-5 pm. www.philaprintshop.com. 8441 Germantown Ave., 215.242.4750. **Map 3, B2**

Art Galleries

3RD STREET GALLERY—In the heart of Old City's gallery district, 3rd Street Gallery features a diverse mix of artists working in various media. In operation since 1978, this artist-run cooperative is devoted to presenting a quality experience of visual arts, all the while encouraging risk and experimentation in their artists' works. W-Su noon-5 pm. www.3rdstreetgallery.com. 45 N. Second St., 215.625.0993. **Map 1, K4**

THE BAZEMORE GALLERY—Located in Manayunk, this gallery features an array of artists inside a space whose design is based on the five elements of Feng Shui. Find pop imagery, abstract landscapes, glass blown artwork and more, plus, rotating exhibits and The Living Wall, an indoor





THE GUIDE

sustainable planting panel. W-Su noon-7 pm. www.thebazemoregallery.com. 4339 Main St., 215.482.1119.

BLUESTONE FINE ART GALLERY—This gallery features original works by contemporary and traditional artists in a range of mediums, including painting, ceramics and sculptures. See the work of well-known and emerging local artists. Each month new exhibitions kick off during Philadelphia's First Fridays, which draws hundreds of art lovers to the neighborhood. Tu-F 10 am-5 pm, Sa noon-4 pm. www.bluestone-gallery.com. 72 N. Second St., 856.979.7588. **Map 1, K4**

BORRELLI'S CHESTNUT HILL GALLERY—Representing 40 local, national and international artists, this gallery and custom framing shop offers a diverse collection of landscapes, cityscapes and still lifes from many schools of painting. Regular, rotating exhibitions feature represented artists. The custom framing center offers everything from restoration to museum-quality looks. Tu-F 10 am-5:30 pm, Sa 10 am-5 pm, Su noon-4 pm. www.chestnuthillgallery.com. 1 East Gravers Lane, 215.248.2549.

BRIDGETTE MAYER GALLERY—Established in 2001, this 3,000-square-foot gallery exhibits contemporary work by artists living in the U.S. and abroad. Find paintings, sculptures and photography with an emphasis on beauty, technology and culture. Tu-Sa 10 am-6 pm and by appointment. www.bridgettemayergallery.com. 709 Walnut St., 215.413.8893 **Map 1, J5**

CALDERWOOD GALLERY—Owners Gary and Janet Calderwood showcase their personal art collection of 20th-century design and fine photography across 30,000 square feet of space. Find museum-quality French Art Deco by Ruhlmann, Arbus, Dufrene and others, Mid-century Modern decorative arts and more. Gary Calderwood's photography presents a visual history of the 20th century. Ships internationally. M-F 11 am-5 pm, Sa-Su by appointment. www.calderswoodgallery.com. 242 Geiger Road, 215.546.5357.

CARRÉ D'ARTISTES—This art gallery is a leader in affordable, contemporary art, selling world-class, original paintings and specializing in a wide variety of artistic styles, from figurative and abstract to landscape, Pop and street art, all created by a vast collection of internationally known artists. Framing services available. Daily 11 am-8 pm, extended hours on First Fridays. www.carredartistesphilly.com. 104 S. 13th St., 215.735.2800. **Map 1, I5**

THE CENTER FOR ART IN WOOD—This not-for-profit museum, gallery and research center focuses on woodworks, showcasing all methods of wood art-making including turned and carved sculptures by renowned artists and craftsmen. Tu-Sa 10 am-5 pm. www.centerforartinwood.org. 141 N. Third St., 215.923.8000. **Map 1, K4**

THE CENTER FOR EMERGING VISUAL ARTISTS—This local resource fosters the development and careers of visual artists, among them Lori Banks, Colette Fu and Jack McGovern. Open M-F 11 am-5 pm, or by appointment. www.cfeva.org. The Barclay, 237 S. 18th St., Suite 3A, 215.546.7775. **Map 1, G6**

CERULEAN ARTS GALLERY & STUDIO—Located just off of North Broad Street, the gallery exhibits eclectic decorative and fine art while the studio offers art instruction and weekend workshops. In addition to the displayed works of more than 100 artists, the gallery also proffers handmade wares from an additional 100 artisans. W-F 10 am-6 pm, Sa-Su noon-6 pm. www.ceruleanarts.com. 1355 Ridge Ave., 267.514.8647. **Map 1, H2**

DA VINCI ART ALLIANCE—Founded in 1931, this South Philly-based nonprofit organization holds programs year-round in order to support regional artists. Programs include juried exhibitions, solo exhibitions and collaborations with other nonprofit art organizations. Most events are free and open to the public. W 6-8 pm, Sa-Su 1-5 pm. www.davinciartalliance.org. 704 Catharine St., 215.550.1446. **Map 1, J7**

EAST FALLS GLASSWORKS—It's worth the trek out to the East Falls neighborhood to visit this hidden treasure, where Philadelphia artists work with hot molten glass to create beautiful works of art. The teaching studio's on-site gallery displays and sells a small collection of works by area artists. Class schedule online. M-F 10 am-6 pm, Sa-Su by appointment. www.eastfallsglass.com. 3510 Scotts Lane, 215.908.7924.

F.A.N. GALLERY—Located in a 1700's Colonial building in Old City, this gallery features emerging and established artists in the classic tradition of American painting. The first floor features a different artist each month, with many from right here in Philadelphia. The second floor displays group exhibitions, ranging from figurative to landscape and still-life. W-Su noon-6 pm. www.thefangallery.com. 221 Arch St., 215.922.5155. **Map 1, K4**

FLEISHER ART MEMORIAL—In addition to offering a rotating display of wide-ranging works by local artists, this gallery also hosts an extensive catalog of inexpensive workshops and free classes for all skill levels. M-F 10 am-5 pm. www.fleisher.org. 719 Catharine St., 215.922.3456. **Map 1, J7**

FLEISHER/OLLMAN GALLERY—Founded in 1952, Fleisher/Ollman Gallery earned its reputation as a premier source of self-taught artists, and today it exhibits contemporary artists who reflect the influence of the self-taught, including Martin Ramirez, Bill Traylor and Tristin Lowe. Tu-F 10:30 am-5:30 pm, Sa noon-5 pm. www.fleisher-ollmangallery.com. 1216 Arch St., Suite 5A, 215.545.7562. **Map 1, H6**

GALLERY 1401—Part of the University of the Arts, this gallery on the 14th floor of Terra Hall showcases photography exhibitions by professionals in collaboration with the University. Exhibitions feature established and emerging photographers from all over the world. M-F 10 am-4 pm, Sa-Su by appointment. www.uarts.edu. The University of the Arts, 211 S. Broad St., 14th floor, 215.717.6300. **Map 1, H6**

GALLERY 51—This antique textile art and oriental rugs gallery features works from all over the world, spanning the last 2,000 years. Find tribal carpets from Central Asia, Ancient Coptic ethnographic textiles and work by contemporary artists, including Alan Magee, Bo Young Moon and Christopher Windle. Tu-F 11 am-6 pm, Sa noon-5 pm, Su-M by appointment. www.gallery51.net. 51 N. Second St., 215.413.3191. **Map 1, K4**

GERSHMAN GALLERY—Collectors and art lovers here find innovative works celebrating Jewish culture, as well as a showcase of fine art photography. Located inside the Gershman Y. M-F 9 am-5 pm. www.gershmany.org. 401 S. Broad St., 215.545.4400. **Map 1, H6**

GRAVERS LANE GALLERY—Located in Chestnut Hill, this edgy, contemporary art gallery exhibits works by both established and emerging artists from around the world. Its media spectrum is broad, including painting, sculpture, fiber and paper. M-Sa 10 am-6 pm, Su noon-5 pm. www.graverslanegallery.com. 8405 Germantown Ave., 215.247.1603. **Map 3, B2**

GROSS MCCLEAF GALLERY—Representing local and national artists with a focus on contemporary art, this gallery has been active in the Philadelphia arts community for more than 40 years. Advising collectors and placing art in museums throughout the region, Gross McCleaf also features monthly rotating exhibitions in two main galleries, as well as special events, artist talks and an extensive inventory. T-Sa 10 am-5 pm. www.grossmccleaf.com. 127 S. 16th St., 215.665.8138.

GROUNDS FOR SCULPTURE—This 42-acre sculpture park and arboretum founded by Seward Johnson features more than 270 contemporary sculptures by renowned and emerging artists. Exhibitions change seasonally in multiple indoor galleries. With rich educational offerings, a robust schedule of performing arts and fun, family events, the park is open year-round. Tickets: \$10-\$18. Open Tu-Su 10 am-6 pm. www.groundsforsculpture.org. 80 Sculptors Way, Hamilton, N.J., 609.586.0616.

INLIQUID ART & DESIGN—This educational resource and exhibition gallery represents a seamless combination of art and the Internet. Go to their website to see the portfolios of over 330 artists, then visit their Fishtown gallery to the work of those artists on display throughout the year. www.inliquid.org. 1400 N. American St., 215.235.3405.

JAMES OLIVER GALLERY—This unique, contemporary loft-style gallery, nestled in the heart of the Historic District, features local, national and international artists in the disciplines of painting, mixed media, photography and installation works that have been recognized by notables such as NPR and Huffington Post. W-F 5 pm-8 pm, Sa 1 pm-8 pm or by appointment. www.jamesolivergallery.com. 723 Chestnut St., 4th floor, 267.918.7432. **Map 1, J5**

KAMIN GALLERY—Housing books and objects commemorating the lives of noted Philadelphians including Benjamin Franklin, Marian Anderson and Tom Phillips, this repository also offers a fascinating gallery on the University of Pennsylvania campus, inside the Van Pelt-Dietrich Library. M-F 9 am-5 pm, Sa-Su by appointment. www.library.upenn.edu. 3420 Walnut St., 1st floor, 215.898.7555. **Map 1, D5**

KHMER ART GALLERY—Philadelphia's resident outpost for Cambodian art, Khmer's cavernous space houses an extensive selection, from ancient works to commissioned pieces, at a broad array of price points. Find stone and wood sculpture, works in copper, pottery, textiles, painting and jewelry. W and F-Sa 11 am-4 pm, and by appointment. www.khmerartgallery.com. 319 N. 11th St., 215.922.5600. **Map 1, I3**



Susan Webster
Bad Cat, 16 x 16
Mixed Media

Bluestone Fine Art Gallery
72 North 2nd Street • Philadelphia
856.979.7588 • bluestone-gallery.com
Complimentary Shipping
within the United States



Here today.
where tomorrow.

Before you travel,
go to wheretraveler.com
and see where to shop, dine
and play once you arrive.

wheretraveler.com
Info only locals know!

wheretraveler.com

THE LEONARD PEARLSTEIN GALLERY—Located in the Westphal College of Media Arts & Design at Drexel University, this gallery exhibits work across many disciplines, from architecture to fashion. National and international artists are featured, as well as Westphal professors. Tu-Su 11 am-6 pm. www.drexel.edu/westphal/resources/leonardpearlstein-gallery. 3401 Filbert St., 215.895.2548. **Map 1, D5**

LOCKS GALLERY—This elegant gallery overlooking Washington Square features critically acclaimed regional, national and international contemporary artists. Tu-Sa 10 am-6 pm. www.locksgallery.com. 600 Washington Square South, 215.629.1000. **Map 1, J6**

MODE MODERNE—This modern styled gallery features furniture and the artwork from a variety of artists from the 20th and 21st centuries. Select from vintage furniture, colorful knickknacks and decor pieces by well-known artisans. Th-Sa noon-6 pm. www.modemoderne.com. 159 N. 3rd St., 215.627.0299. **Map 1, K4**

MOUNT AIRY CONTEMPORARY—Husband-and-wife artists Colin Keefe and Andrea Wohl Keefe run this charming exhibition space in the carriage house behind their residence. Here, find not only their own works, but also those of other artists in the region. Call for hours. www.mountairycontemporary.com. 25 W. Mt. Airy Ave., 267.270.2787

MUSE GALLERY—This artist-run Old City gallery encompasses a range of styles including abstract, conceptual and representational. Each month, the gallery highlights a different artist's work in varying disciplines, creating a new experience for each visit. W-Su noon-5 pm. www.musegalleryphiladelphia.com. 52 N. Second St., 215.627.5310. **Map 1, K4**

PENNSYLVANIA GUILD OF CRAFTSMEN—One of the nation's largest and most recognized craft guilds offers a variety of classes from sketching to blacksmithing, and organizes several craft shows, including the annual Rittenhouse Square Fine Craft show. www.pacrafts.org. 335 N. Queen St., Lancaster, Pa., 717.431.8706.

PENTIMENTI GALLERY—Discover content-driven work that challenges traditional use of materials and aesthetics at this Old City gallery. Some unconventional materials used in past displayed works include packaging tape, marine vinyl and embroidered x-rays. W-F 11 am-5 pm, Sa noon-5 pm, Tu by appointment. www.pentimenti.com. 145 N. Second St., 215.625.9990. **Map 1, K4**

PHILADELPHIA ART ALLIANCE—Established in 1915, the oldest multidisciplinary arts center in the nation joined with the University of the Arts. The Alliance exhibits a wide range of contemporary fine art and crafts, with frequent lectures, recitals and reading groups. Free. Tu-Su noon-6 pm. www.philartalliance.org. 251 S. 18th St., 215.545.4302. **Map 1, G6**

PHILADELPHIA PHOTO ARTS CENTER—A nonprofit organization devoted to the study, practice and appreciation of photography, the PPAC offers educational programs, photographic exhibitions and lectures by practicing artists within the Crane Arts complex. Open Tu-Sa 10 am-6 pm. www.philaphotoarts.org. 1400 N. American St., Suite 103, 215.232.5678.

GALLERIES+ANTIQUES



THE PHILADELPHIA SKETCH CLUB—Founded in 1860 by six former students of the Pennsylvania Academy of the Fine Arts, the country's oldest artists club organizes exhibits by established and emerging artists in the main gallery of the historic building. W and F-Su 1 pm-5 pm. www.sketchclub.org. 235 S. Camac St., 215.545.9298. **Map 1, I6**

THE PLASTIC CLUB ART GALLERY—Since 1997, this gallery has been devoted to the promotion and preservation of the visual (plastic) arts in Philadelphia. Open during workshop hours or by appointment. www.plasticclub.org. 247 S. Camac St., 215.545.9324. **Map 1, I6**

THE PRINT CENTER—Founded in 1915, this nonprofit gallery was one of the very first venues in the country dedicated to prints. The center continues to support printmaking and photography as vital contemporary arts with regularly scheduled exhibitions, plus it has a gallery store. Tu-Sa 11 am-6 pm. www.printcenter.org. 1614 Latimer St., 215.735.6090. **Map 1, H6**

SCHWARZ GALLERY—For more than 75 years, the Schwarz family has been a leading source of fine European and American paintings for serious collectors and museums. Located just off Rittenhouse Square. Tu-F 10 am-6 pm, Sa by appointment. www.schwarzgallery.com. 1806 Chestnut St., 215.563.4887. **Map 1, G5**

SERAPHIN GALLERY—This gallery reps modern and contemporary painters, sculptors and photographers and advances the careers of emerging artists, particularly locals. W-Su 10 am-5 pm, and by appointment. www.seraphin.squarespace.com. 1108 Pine St., 215.923.7000. **Map 1, I6**

SNYDERMAN-WORKS GALLERIES—The acclaimed Works Gallery, founded in 1965, is a contemporary studio crafts gallery. The Snyderman Gallery, opened in 1983, features paintings, prints, photos and sculptures. Tu-Sa 10 am-6 pm. www.snyderman-works.com. 303 Cherry St., 215.238.9576. **Map 1, K4**

SOL MEDNICK GALLERY—Part of the University of the Arts, this gallery dedicated to the exhibition of photography, showcases works by professionals in collaboration with the school. M-F 10 am-4 pm, Sa-Su by appointment. www.uarts.edu. The University of the Arts, 211 S. Broad St., 15th floor, 215.717.6300. **Map 1, H6**

TWENTY-TWO GALLERY—Admire beautiful paintings, sculptures, photography and mixed-media works by local and national artists at this 22-member gallery. W-Su noon-6 pm, or by appointment. www.twenty-two-gallery.com. 236 S. 22nd St., 215.772.1911. **Map 1, F6**

VOX POPULI—For more than a quarter century, this nonprofit collective has specialized in contemporary works by under-represented artists. Offerings include monthly exhibitions, gallery talks and other programming. The Blackbox Gallery, is home to a curated video program (regular hours) and a live arts program (after hours). W-Su noon-6 pm. www.voxpopuligallery.org. 319 N. 11th St., third floor, 215.238.1236. **Map 1, I3**

WEXLER GALLERY—Find innovative functional and nonfunctional pieces by master craftsmen and emerging artists in a variety of media here. Tu-Sa 10 am-6 pm, M by appointment. www.wexlergallery.com. 201 N. Third St., 215.923.7030. **Map 1, K4**



Dining | August



The Dutch

What happens when two acclaimed chefs join forces? A top spot for breakfast and lunch that pays homage to each of their backgrounds—Dutch and Pennsylvania Dutch. Favorites include the scallion waffle with creamed chipped beef and the “Ring Bologna” eggs Benedict. www.thedutchphilly.com. 1527 S. 4th St., 215.755.5600.



Dizengoff

Hummus—James Beard Award-winning chef Michael Solomonov’s claim to fame—is the star here. Five variations of the dip rotate daily and come with pita, Israeli salad and pickles. Picnic tables inside feel welcoming, while outside seats make for great people watching. www.dizengoffphilly.com. 1625 Sansom St., 215.867.8181. **Map 1, G5**



Dos Tacos

Philly’s taqueria scene got a boost when this outfit opened in 2015. Since then, it’s become a popular spot for thick-cut pork belly tacos served with house verde kimchi and Korean chili paste and the “Oaxaca Mac ‘N Cheese” with red pepper macaroni, queso and pickled jalapeno. www.dostacosphilly.com. 120 S. 15th St., 215.567.8226. **Map 1, H5**

Avenue of the Arts

AQIMERO—New Latin. Inside the lobby of the iconic Ritz-Carlton Philadelphia, across from City Hall, acclaimed chef Richard Sandoval serves up everything from sushi and ceviche to sustainably caught seafood creations with a Latin accent. B, D (daily), L (M-F), Br (Sa-Su). www.aqimero.com. 10 Avenue of the Arts, 215.523.8200. \$\$\$ **Map 1, H5**

ESTIA—Mediterranean. Old World ambiance and whole, fresh, imported fish invite diners to relax, Mediterranean-style, over fine food and a glass from the extensive wine selection. Excellent pre-theater dining. L, D (daily). www.estiarestaurant.com. 1405-1407 Locust St., 215.735.7700. \$\$\$ **Map 1, H6**

JET WINE BAR—Wine Bar. This smart wine bar offers an intriguing list of more than two dozen global vintages by the glass. Find Hungarian somlo and German pinot noir. Pair your choice with tasty bites such as ahi poke wontons, roasted scallion labneh or an artisanal cheese plate. D (daily), Br (Sa-Su). www.jetwinebar.com. 1525 South St., 215.735.1116. \$\$\$ **Map 1, H7**

MCCORMICK & SCHMICK’S—Seafood. This bustling 290-seat establishment brings the flavors of the Pacific Northwest to Philadelphia, plus draft beers, single malts and Northwest wines. For a more intimate meal, head upstairs to cozy booths. L, D (daily). www.mccormickandschmicks.com. 1 S. Broad St., 215.568.6888. \$\$\$ **Map 1, H5**

MORTON’S, THE STEAKHOUSE

—Steak. An extensive wine selection is just a bonus of this signature Chicago steakhouse experience. Wet-aged prime beef broiled Midwestern-style makes for hearty, large portions, but also try pork, lamb and veal chops, as well as tasty seafood offerings. D (daily). www.mortons.com. 1411 Walnut St., 215.557.0724. \$\$\$ **Map 1, H5**

SO CREPE—French. French owners Frederic Elmalek and Fabrice Goutte batter up authentic sweet and savory crepe varieties and make everything in house, from the whipped cream to the salted butter caramel. B, L (M-Sa), D (daily), Br (Su). www.socrepe.com. 1506 South St., 267.761.9310. \$ **Map 1, H7**

TAVERN ON BROAD—American. Head beneath the Bellevue building for burgers and beers, plus the game on one of the restaurant’s 34 high-definition TVs. Space for private parties available. L, D (daily). www.tavernonbroad.com. The Bellevue, 200 S. Broad St., 215.546.2290. \$\$ **Map 1, H5**

VALANNI—Mediterranean. Sleek yet laid-back, this neighborhood spot is a few blocks from the Avenue of the Arts. Tuck into modern Medi-Latin entrées and appetizers like spicy pulled chicken empanadas, lamb sliders and paella. D (daily), Br (Su). www.valanni.com. 1229 Spruce St., 215.790.9494. \$\$\$ **Map 1, I6**

There's a lot more going on this August. Visit us online: wheretotraveler.com

VETRI CUCINA—Italian. Book well in advance for a table at this tiny, 35-seat stunner, one of the hottest restaurants in town. Chef-owner Marc Vetri’s award-winning cuisine shines with delicate takes on classic old-world treats. Reservations are required. L (F), D (daily). www.vetricucina.com. 1312 Spruce St., 215.732.3478. \$\$\$ **Map 1, H6**

VOLVER—American. Volver is Spanish for “to return,” and with this high-class restaurant, chef Jose Garces does just that, revisiting his favorite culinary experiences from around the world. The diverse, seasonal, and often locally sourced menu features some of the most innovative dishes in the city. D (Tu-Sa). www.volverrestaurant.com. 300 S. Broad St., 215.670.2302. **Map 1, H6**

XIX (NINETEEN)—American. For a special evening, take the elevator to the 19th floor of the Hyatt Philadelphia at The Bellevue. Settle in beneath the restaurant’s spectacular pearl chandelier, or enjoy your meal in the more relaxed cafe space. B, L (M-Sa), D (daily), Br (Su). www.nineteenrestaurant.com. Hyatt Philadelphia at The Bellevue, 19th floor, Broad and Walnut sts, 215.790.1919. \$\$\$ **Map 1, H5**

Center City & Rittenhouse

24—Italian/Pizza. Antipasti, pizza and pasta dishes are the focus at this chef Jose Garces eatery along the Schuylkill Banks. Classic pizza options are served alongside more unusual choices including lamb sausage or clam pizzas. Apart from the wood-



the best. from any angle.

GENO'S STEAKS
PHILADELPHIA ORIGINAL



Philadelphia's new artisan food hall is opening right on Independence Mall!

- | | | |
|------------------------|--------------------|------------------------|
| • 3rd and Ferry | • Chocodiem | • Mi & Yu Noodle Bar |
| • Abunai Poke | • FreeByrd Chicken | • Mighty Melt |
| • Baby Buns | • Grub House | • Olive With A Twist |
| • Barry's Buns | • Ka'moon | • Penzeys Spices |
| • Bluebird Distilling | • Lalo | • Pinch Dumplings |
| • Bonatoss Flower Shop | • Marino Brothers | • Prescription Chicken |
| • Break Juicery | • Cheesesteaks | • Pure Blend Tea |
| • Chaat and Chai | • Menagerie Coffee | • RD Shadex |
| | | • Rebel Taco |
| | | • Rustica Rosticceria |
| | | • Scoop DeVille |
| | | • Takorean |
| | | • TAPS Fill Station |
| | | • Vera Pasta Co |

111 S Independence Mall E, Philadelphia • www.theboursephilly.com



fired fare, diners will be treated to an extensive Italian wine list. The “Aperitivo” happy hour occurs daily with drink specials, snacks and small plates. L (M-F), D (daily), brunch (Sa-Su). www.24philly.com. 2401 Walnut St., 215.333.3331. \$\$\$ **Map 1, F5**

A.KITCHEN—Mediterranean. An open kitchen, shared plates and a casual yet sophisticated atmosphere define this well-regarded European-style eatery. Expect a thoughtful wine list, craft beers and tasty cocktails. B, L (M-F), D (daily), Br (Sa-Su). www.akitchenandbar.com. 135 S. 18th St., 215.825.7030. \$\$\$ **Map 1, G5**

BAOLOGY—Taiwanese. Husband-and-wife team, Judy Ni and Andy Tessier’s first restaurant serves up fast-casual street food with a roster of ingredients that changes with the season. On the menu, find Ni’s childhood favorites the way her grandmother made: Berkshire pork, shrimp and spinach potstickers; Taiwanese free-range fried chicken; wild-caught shrimp ruen bings (like a mini burrito). L (M-Sa), D (M-F). www.baoology.com. 1829 John F. Kennedy Blvd., 215.999.2263. \$ **Map 1, G4**

BLUESTONE LANE—Coffee House. This Australian-style cafe pours caffeinated drinks, plus a signature avocado “smash” on multigrain toast with sunflower and a pepita-seed pesto, goat cheese and an optional organic poached egg. B, L (daily). Hours and meals vary by location. www.bluestonelane.com. 1701 Locust St., 718.374.6858. \$ **Map 1, G6**; 160 N. Gulph Road, 267.758.5915.

BUTCHER AND SINGER—Steak. This stunning steak and chop house from Stephen Starr has a modern supper-club vibe, thanks to 28-foot-high ceilings, seductive leather booths, bold draperies and two magnificent chandeliers. It’s a glam setting for tucking into Starr’s top-notch steaks and chops. L (M-F), D (daily). www.butcherandsinger.com. 1500 Walnut St., 215.732.4444. \$\$\$ **Map 1, H5**

DAVIO’S NORTHERN ITALIAN STEAKHOUSE—Steak. On the second floor of the historic Provident Bank Building, Davio’s serves prime natural-aged steaks as well as veal chops and seafood beneath soaring 24-foot ceilings. B, L (M-F), D (daily), Br (Su). www.davios.com. 111 S. 17th St., 215.563.4810. \$\$\$ **Map 1, G5**

DEL FRISCO’S DOUBLE EAGLE STEAK HOUSE—Steakhouse. Enjoy top-quality steaks in an elegant booth or drink up at one of a handful of bars located within the sweeping former First Pennsylvania Bank building. Patrons can dine in the Vault Room (a former bank vault) or below the restaurant’s extravagant three-story wine tower. L (M-F), D (daily). www.delfriscos.com. 1426 Chestnut St., 215.246.0533. \$\$\$ **Map 1, H5**

ELIXR COFFEE—Coffee. Founded in 2010, this roaster started as an idea between friends. Today, in addition to roasting, the shop sources, prepares and delivers delicious light-roast brews. In the mood for a side of art with your coffee? Elixr also hosts a top-notch rotating series of murals and installations. M-Sa 7 am-8 pm, Su 8 am-7 pm. www.elixrcoffee.com. 207 S. Sydenham St., 239.404.1730. \$ **Map 1, H5**

ERAWAN THAI CUISINE—Thai. This inviting BYOB offers tasty and authentic dishes with fresh ingredients. A friendly staff helps guests select spices to fit specific tastes. BYOB. L, D (Tu-Su). www.erawanthaipilly.com. 123 S. 23rd St., 215.567.2542. \$\$ **Map 1, F5**



FINE PALATE—Global American. This fine-dining establishment focuses on globally inspired fare using high-quality ingredients. Enjoy fried oysters at brunch and pork belly, quail and black truffle mac and cheese at dinner. D (Tu-Sa), Br (Sa-Su). www.finepalategroup.com. 231 S. 15th St., 267.318.7971. \$\$\$-\$\$\$\$ Map 1, H6

GOLDIE—Middle Eastern. From James Beard Award-winner Michael Solomonov and Steve Cook, owners of lauded Zahav, comes this fast-casual concept with a simple menu: falafel, fries and tehina shakes. Located above Rooster Soup Company. L, D (daily). www.goldiefalafel.com. 1526 Sansom St., 267.239.0777. \$ Map 1, H5; 2101 Pennsylvania Ave., 215.557.0015.

HARP & CROWN—American. Upstairs, a vintage-wallpapered 140-seat dining room provides Old World-style ambiance, while downstairs, a bar and two-lane, reservations-only bowling alley called Elbow Lane keep revelers entertained. For sustenance, find wood-fired pizza, charcuterie and New American entrees, plus a distinctive cocktail list. D (daily), Br (Sa-Su). www.harpandcrown.com. 1525 Sansom St., 215.330.2800. \$\$ Map 1, H5

JAMES—American. This restaurant aims to blend a cozy dining experience with modern American cuisine, like bacon wrapped meatloaf and Moroccan-spiced wings. The restaurant's signature cocktails are the efforts of a team of veteran mixologists, crafted with local spirits and fresh-squeezed juices. L (M-F), D (daily), Br (Sa-Su). www.jamesphiladelphia.com. 1835 Arch St., 267.324.5005. \$\$\$

JOE COFFEE—Coffee. Founded in 2003 in New York City's West Village, Joe has made its way to Philadelphia with locations in University City and Rittenhouse Square. With a commitment to fair trade and quality, this cafe aims to make a cup of coffee that's satisfying in more ways than one. Hours vary by location. www.joewyork.com. 1845 Walnut St., 215.278.2454. Map 1, G5; 3200 Chestnut St., 215.240.4577. Map 1, D5

KAYU—American. Healthy grain bowls, soups, sandwiches and DIY salads greet folks at this bright and friendly spot inside the 3 Logan Square building. B, L (M-F). www.kayufoods.com. 1717 Arch St., 267.639.9949. \$ Map 1, G4

LACROIX—French. Featuring sumptuous cuisine, a top-notch wine list and inviting décor, Lacroix has rightfully earned its reputation as one of the city's best dining destinations. Reservations suggested. B, L, D, Br (daily). www.lacroixrestaurant.com. 210 W. Rittenhouse Square, 215.790.2533. \$\$\$ Map 1, G6

LE CHERI—Classic French. Pierre and Charlotte Calmels' elegant Art Alliance restaurant offers Old World traditions in dishes like lamb osso bucco, poached halibut and a classic onion soup gratinée. Reservations are required for the dining rooms, but the 14-seat bar is walk-in only. D (W-Su), Br (F-Su). www.lecheriphilly.com. 251 S. 18th St., 215.546.7700. \$\$\$-\$\$\$\$ Map 1, G6

THE LOVE—American. Aimee Olexy and James Beard Award-winner Stephen Starr's venture gives ample reason for falling in love, from the tasty fare to the cozy bar and dimly lit dining room. Stop in for a cocktail with clever names like "A Very Good Bourbon Drink," mixing Jim Beam Black with Gran Classico Bitter, Iris vermouth and apple cider. Move on to dinner with approachable, yet creative

dishes like whole smoked trout with kale, maple farro and spicy pecans. Groups of up to 20 spread the good vibes around a country-style communal table in the upstairs loft. L (M-F), D (daily), Br (Sa-Su). www.theloverestaurant.com. 130 S. 18th St., 215.433.1555. \$\$\$ Map 1, G5

MARATHON GRILL—American. Popular with the downtown work crowd, families and ladies who lunch, this casual spot features all day breakfast, "Control Freak" salads, great grilled items, burgers and smoothies. Hours vary by location. www.marathongrill.com. 121 S. 16th St., 215.569.3278. \$\$ Map 1, H5; 1818 Market St., 215.561.1818. Map 1, G5; 1839 Spruce St., 215.731.0800. \$\$ Map 1, G6

OCEAN PRIME—Seafood & Steak. Most of the dishes on the seafood-forward menu at this splashy outpost from restaurateur Cameron Mitchell are made from scratch. Don't miss the restaurant's famous 10-layer carrot cake or something from the Wine Spectator Award-winning wine collection and signature cocktail list. D (daily). www.ocean-prime.com. 124 S. 15th St., 215.563.0163. \$\$\$\$ Map 1, H5

PARC—French. From Philly restaurateur Stephen Starr comes this see-and-be-seen brasserie overlooking Rittenhouse Square. Classic fare, décor (a zinc bar, vintage photos), lively sidewalk tables and a chic crowd give this spacious restaurant endless appeal. B, L, D (daily), Br (Sa-Su). www.parc-restaurant.com. 227 S. 18th St., 215.545.2262. \$\$ Map 1, G6

PLENTY CAFE—Cafe, Restaurant & Bar. This "Best of Philly" European-style spot offers a Pinterest-worthy backdrop for tucking into a menu that trots the globe. Dishes include Spanish frittata and shakshuka, plus breakfast all day. Caffeine fiends will be pleased to find a java program that partners with Square One Coffee, pouring single-origin nitros, cold brews and even a seasonal coffee soda on tap. Beer, wine, cocktails. B, L, D (daily). www.plentyphiladelphia.com. 1602 Spruce St., 215.560.8684. \$-\$\$ Map 1, H6; 1710 E. Passyunk Ave., 267.909.8033; 705 S. Fifth St., 267.758.6791.

POI DOG—Hawaiian. This former food truck now calls a brick-and-mortar storefront home for serving Hawaiian comfort foods with a modern twist. Dig into lighter fare like tuna poke with macadamia nuts and Spam musubi, or stick-to-your-bones plates of kalua pig, mochi nori fried chicken or pork belly adobo with macaroni salad and white rice. Sweet endings include bibinka (Filipino coconut cake with guava caramel), andagi (Okinawan donuts) and butter mochi. L, D (M-Sa). www.poidogphilly.com. 102 S. 21st St., 215.279.7015. \$ Map 1, F5

THE PRIME RIB—Steak. This "civilized" supper club serves acclaimed USDA prime cuts, seafood that's flown in daily and wines from a top-notch list. The sophisticated dining room takes diners back to the 1940s, with live piano nightly in the romantic, dimly lit lounge. D (daily). www.theprimerib.com. 1701 Locust St., 215.772.1701. \$\$\$ Map 1, G6

PUB & KITCHEN—Contemporary European. Opened in 2008, Pub & Kitchen combines the sophistication of contemporary European cuisine with the comfort and warmth of an authentic neighborhood tavern. With a frequently changing menu and an extensive list of spirits, beer and wine, Pub & Kitchen is a casual and energetic space where well-crafted food and drink go hand-

in-hand. D (daily), Br (Sa-Su). www.thepubandkitchen.com. 1946 Lombard St., 215.545.0350. \$\$\$ Map 1, G6

R2L—American. Located on the 37th floor of Two Liberty Place, chef Daniel Stern's restaurant offers modern twists on traditional American flavors. The stunning skyline views make this spot one of Philly's most spectacular dining destinations. D (daily). www.r2restaurant.com. 50 S. 16th St., 37th floor, 215.564.5337. \$\$ Map 1, H5

SCARPETTA—Modern Italian. The Rittenhouse Hotel's James Beard-nominated restaurant offers a sophisticated wine cellar-like dining room for indulging in upscale Italian cuisine made with local ingredients. Expect house-made pastas, like the restaurant's signature, tomato and basil spaghetti, plus dishes like Niman Ranch porterhouse lamb. Extensive wine list, distilled spirits, cocktails and beer. D (daily). www.scarpettarestaurants.com/philadelphia. 210 W. Rittenhouse Square, 215.558.4199. \$\$\$-\$\$\$\$ Map 1, G6

SEAFOOD UNLIMITED—Seafood. Located just off of Rittenhouse Square, this intimate neighborhood favorite specializes in simply prepared fresh fish and seafood selections. D (M-Sa). www.seafoodunlimited.com. 270 S. 20th St., 215.732.3663. \$\$\$ Map 1, G6

SNAP KITCHEN—American. This Texas-based fast-casual spot offers healthy takes on favorites, with most entrees under 500 calories. Also here, a full line of cold-pressed juices and snacks. B, L, D (daily). www.snapkitchen.com. 1901 Chestnut St., 215.845.0002. \$ Map 1, G5; 601 S. 10th St., 215.845.0027. Map 1, I7; 1325 Frankford Ave., 267.838.6590.; 243 Market St., 215.845.0004. Map 2, D5

SOUTH—American. Diners here can choose from three distinct areas: an elegant dining hall, a convivial bar/lounge and a lively jazz parlor hosting top acts six nights a week. As the name suggests, the menu tips its hat to the American South, but with modern flair in dishes like Cajun shrimp deviled eggs, fried catfish and grits and a veggie jamabalaya. D (Tu-Su), Br (Su). www.southrestaurant.net. 600 N. Broad St., 215.600.0220. \$\$\$ Map 1, H2

SQUARE 1682—International. Chef Bobby Surdam serves up creative, flavorful combinations at Square 1682, located adjacent to the stylish Hotel Palomar. You'll find shareable plates and a vibe that blends casual and cosmopolitan into a distinctly cool dining experience. And when you're on the go, try the seasonal lunch menu with express options that are quick and delicious. B, L (M-F), D (daily), Br (Sa-Su). www.square1682.com. 121 S. 17th St., 215.563.5008. \$\$ Map 1, G5

SQUARE ONE COFFEE—Coffee. This award-winning micro-roaster based out of Lancaster now has two retail locations in the city. The small, family-owned business takes pride in taking a small batch, hand-crafted approach to roasting, and it shows in the coffeehouses offerings. Hours vary by location. www.squareonecoffee.com. 1811 John F. Kennedy Blvd., 267.930.8654. \$ Map 1, G4; 249 S. 13th St., 267.758.6352. Map 1, I6

SUGA BY SUSANNA FOO—Chinese. Two-time James Beard Award-winning chef Susanna Foo's venture uses farm-fresh ingredients with fine-dining techniques in dishes like tea-smoked Peking duck breast with farro risotto and Mandarin pork

THIS IS HOW IT'S DONE



STEAKS & HOAGIES

215.928.1911 • 4TH & SOUTH ST. • PHILADELPHIA • JIMSSOUTHSTREET.COM

JIMSSOUTHSTREET @JIMSSOUTHSTREET #JIMSSOUTHSTREET

OPEN EVERY DAY 'TIL LATE

Here today.
where tomorrow.

Before you travel,
go to wheretraveler.com
and see where to shop, dine
and play once you arrive.

wheretraveler.com

Info only locals know

wheretraveler.com



VIETNAM
RESTAURANT
Est. 1984

The Fine Art of
Vietnamese Home Cooking



Vietnam Restaurant
221 North 11th St.
Phila., PA 19107
215-592-1183

PH-Sat 11 am - 10:30 pm
Sun-Thurs 11 am - 9:30 pm

Vietnam Cafe
816 South 47th St.
Phila., PA 19143
215-792-6386

Mon-Thurs 11:30 am - 8 pm
Fri 11:30 am - 9:30 pm
Sat 12 - 6:30 pm
Sun 12 - 9 pm

www.eatatvietnam.com

Delivery available through tryaviat.com



pasta. L, D (daily), Br (Sa-Su). www.sugabyfoo.com. 1720 Sansom St., 215.717.8968. \$\$\$-\$\$\$\$ Map 1, G5

URBAN FARMER—Steak House. On historic Logan Square, this modern steakhouse takes pride in using locally sourced ingredients in straightforward preparations. B, L, D (daily), brunch (Sa-Su). www.urbanfarmerphiladelphia.com. 1850 Benjamin Franklin Parkway, 215.963.2788. \$\$\$ Map 1, G4

VEDA—Indian. This dining room sets an elegant tone for a menu of Northern Indian food with a modern, bistro touch. The menu includes small plates like masala crab cakes and scallops dressed in a roasted pepper chutney. Mains include familiar favorites, plus out-of-the-box options like a curry with tofu and peas. A selection of tandoori meats and roti breads rounds out the tasty offerings, with a full bar pouring wine, beer and craft cocktails. L (M-F), D (daily) Br (Sa-Su). www.vedaphilly.com. 1920 Chestnut St., 267.519.2001. \$ Map 1, G5

VERNICK FOOD & DRINK—American. Modern refinement and perfect ingredients are the hallmarks of this husband-and-wife operation. James Beard Award-winning chef Greg Vernick's thoughtful menu of global plates showcases techniques he perfected while working in kitchens with Jean-Georges Vongerichten around the world. Don't miss the delectable entrees roasted in a wood oven, including the organic Amish chicken. Reservations recommended. D (Tu-Su). www.vernickphilly.com. 2031 Walnut St., 267.639.6644. \$\$\$ Map 1, G5

VIC SUSHI—Sushi. This no-frills BYOB plates classic crowd-pleasers like Philadelphia and California rolls, along with inventive house specials and delicious tuna dumplings. L, D (M-Sa). www.vic-sushi.com. 2035 Sansom St., 215.564.4339. \$ Map 1, G5

Chinatown

EMPRESS GARDEN—Asian Fusion. One of few Taiwanese restaurants in Philly, Empress Garden offers a variety of unique dishes alongside some more traditional Chinese items for the less adventurous diner. Try the fried pork chops and Taiwanese noodles. BYOB. L, D (daily). www.empressgardenphiladelphia.com. 108 N. 10th St., 215.592.0739. \$\$

NAN ZHOU HAND DRAWN NOODLE HOUSE—Chinese. As the name suggests, folks come here for the handmade noodles in savory soups, but the restaurant also dishes out plenty of other delicious dishes from freshly made dumplings to mapo tofu, making it a must-stop in Chinatown. BYOB. Cash only. L, D (daily). www.nanzhounoodlehouse.com. 1022 Race St., 215.923.1550. \$ Map 1, J4

SANG KEE PEKING DUCK HOUSE—Chinese. Since 1980, Sang Kee has been a destination for authentic Hong Kong-style Chinese cuisine, including Peking duck and spot-on wonton soup. Three floors of seating ensure any wait for a table will be minimal. L, D (daily). www.sangkeechinatown.com. 238 N. Ninth St., 215.925.7532. \$\$ Map 1, I4

VIETNAM RESTAURANT—Vietnamese. This beloved mom-and-pop eatery located in the heart of the Chinatown neighborhood serves authentic Vietnamese cuisine at accessible prices. On the third floor find Bar Saigon, modeled after 1930s Saigon dance clubs, where guests sing karaoke and sample delicious cocktails to their heart's content. L, D (daily). www.eatatvietnam.com. 221 N. 11th St., 215.592.1163. \$\$ Map 1, I4





XI'AN SIZZLING WOKS—Chinese. This casual restaurant aims at traditional Xi'an/Shaanxi-style dishes at affordable prices. Locals make sure to order the biang biang noodles and “chinese hamburger” (roujiamo). BYOB. L, D (daily). www.xiansizzlingwokshilly.com. 902 Arch St., 215.925.1688. **\$\$ Map 1, J4**

Convention Center

AMUSE—French. A walk through City Hall’s arched promenade from South Broad leads you to the steps of Le Meridien’s revamped, elegant aMuse. Taking a cue from the French brasserie’s name, the craft cocktail list features libations inspired by history’s great muses. Food is rich and delicious, ranging from seasonal salads to fresh oysters, pressed chicken and steak-frites. And the space, well, it’s just sexy. B, L, D (daily), Br (Sa-Su). www.amusephiladelphia.com. 1421 Arch St., 215.422.8222. **\$\$ Map 1, H4**

HARD ROCK CAFE—American. Philly’s outpost of the international phenomenon is located in the historic Reading Terminal train station, steps from the Convention Center and a few blocks from the historic district. Inside, the restaurant is filled with its trademark rock memorabilia, plus a gift shop of Hard Rock-branded souvenirs. On the menu, find favorites like “Legendary Burgers,” steaks, salads and sandwiches. L, D (daily). www.hardrock.com. 1113-31 Market St., 215.238.1000. **\$\$ Map 1, I4**

MOLLY MALLOY’S—Pub/Bar. Nestled in the heart of the historic Reading Terminal Market, this airy gastropub from the folks behind Iovine Brothers produce serves seasonal fare from chef Bobby Fisher and pours craft beers, 35 of which are on draft. B, L, D (daily). www.mollymalloysphilly.com. Reading Terminal Market, 1136 Arch St., 267.525.1001. **\$ Map 1, I4**

READING TERMINAL MARKET—International. Founded in 1893, Reading Terminal Market has evolved into one of Philadelphia’s major food meccas, where visitors can sample international and local specialties, including cheesesteaks and Pennsylvania treats. B, L, D (daily). www.readingterminalmarket.org. 12th and Arch streets, 215.922.2317. **\$ Map 1, I4**

East Passyunk Avenue

BING BING DIM SUM—Dim Sum. This spot brings a new, modern spin on the classic dim sum. Look for traditional soup dumplings alongside roast pork bao filled with sharp provolone and long hots, plus crispy lamb rolls and congee made with chicken sausage. Pair all that goodness with a shareable pitcher of cocktails. L (F-Su), D (daily). www.bingbingdimsum.com. 1648 E. Passyunk Ave., 215.279.7702. **\$-\$\$**

CHHAYA CAFÉ—Coffee House. This community gathering place dishes up wholesome and tasty breakfast and lunch fare, and pours some of the best brews (coffee and tea) in town. Worker bees need not worry—laptops are welcome here. B, L (daily, kitchen closes at 3 pm). www.chhayacafe.com. 1819 E. Passyunk Ave., 215.465.1000. **\$**

FOND—American. This intimate contemporary restaurant is flecked with touches of chef Lee Styer’s classic French training. The refined, seasonal menu might include such gems as Thai curry escargot, seared foie gras with cranberries or the delicious beef short ribs with Bordelaise sauce. D (Tu-Su),

Br (Su). www.fondphilly.com. 1537 S. 11th St., 215.551.5000. **\$\$\$**

NOORD—American. This classic BYOB bistro with a Northern European focus features locally farmed produce and meats, served in a relaxed and friendly atmosphere. Breads and desserts are made in-house, as are the smoked and cured fish and meats. All you have to do is bring the wine. D (W-Su), Br (Su). www.noordphilly.com. 1046 Tasker St., 267.909.9704. **\$\$\$**

PARADISO—Italian. As a key player in the burgeoning East Passyunk Avenue dining scene, Paradiso brings fresh ingredients to mouth-watering dishes. Expect hand-rolled gnocchi, Hudson Valley duck breast and whole-roasted branzino. L (Tu-F), D (Tu-Su). Sundays BYOB with no corkage fee. www.paradisophilly.com. 1627 E. Passyunk Ave., 215.271.2066. **\$\$**

STARGAZY—British. The lunch and supper (read: early dinner) crowd digs into hearty, regional British cuisine here. Pie and mash is a staple of the menu, and flavors run the gamut from traditional beef and onion to daily specials. Other house-made noshes include sausage rolls, Cornish pasties and banoffee pie. L, D (Tu-Sa), Br (Su). 1838 E. Passyunk Ave., 215.309.2761. **\$\$**

TOWNSEND—French. From broiled oysters to sauteed sweetbreads and seared duck breast, wine and food offerings follow the seasons at chef-owner Townsend Wentz’s eponymous fine-dining spot, which is also known for masterful food and wine pairings. If you can’t get a table, try the bar, where the full dinner menu is also available. D (W-M). www.townsendrestaurant.com. 1623 E. Passyunk Ave., 267.639.3203. **\$\$\$**

Manayunk

BOURBON BLUE—American. This hotspot features New American cuisine with a New Orleans accent. Dig into favorites like Southern fried chicken, jambalaya and country-style ribs. On weekends, the Canal Lounge offers live entertainment. D (daily), Br (Sa-Su). www.bourbonblue.com. Two Rector St., 215.508.3360. **\$\$**

JAKE’S RESTAURANT AND COOPER’S WINE BAR—American. Jake’s and Cooper’s are upscale-yet-comfortable spots to enjoy high-quality food and carefully selected wines. At Jake’s, dig into delicious dishes like crab cakes, chicken breast stuffed with mushrooms duxelle, duck a l’orange, made with organic, locally grown ingredients. Pair entrees with wines from Cooper’s top-notch collection. L, D (daily), Br (Su). www.jakesrestaurant.com. 4365 Main St., 215.483.0444. **\$\$**

THE JUICE MERCHANT—Health Food. Using 100 percent organic ingredients, The Juice Merchant is the go-to place for the health conscious. Looking to make health food convenient, the shop has a full menu of cold-pressed juices, smoothies and vegan salads and sandwiches. B, L, D (daily). www.thejuicemerchant.com. 4330 Main St., 215.483.8888. **\$**

MANAYUNK BREWERY & RESTAURANT—Pub/Bar. Start your meal with one of the brewery’s hand-crafted beers made on site. The eclectic menu features stone-oven pizzas, sushi, grilled steaks, fresh salads and classic burgers. Live music daily. L, D (daily), Br (Su). www.manayunkbrewery.com. 4120 Main St., 215.482.8220. **\$\$**

OLD EAGLE TAVERN—Tavern. One of the best-kept secrets in Manayunk, this old world-style tavern specializes in reinvented bar fare and an extensive beer collection, including excellent crafts, 11 rotating drafts and 60-plus bottles. D (daily), Br (Sa-Su). www.oldeagletavern.com. 177 Markle St., 215.483.5535. **\$\$**

Midtown Village

BARBUZZO—Mediterranean. The rustic furnishings here set a cozy vibe for the Mediterranean-influenced dishes and well-stocked bar. Reserve a table for simple, yet flavorful fare, including roasted bone marrow and grilled fresh fish. L (M-Sa), D (daily). www.barbuzzo.com. 110 S. 13th St., 215.546.9300. **\$\$\$ Map 1, I5**

BRÜ CRAFT & WURST—German. This indoor bierhall and wursthaus serves up delicious Bavarian/American cuisine, including pork belly, weiner schnitzel, and, of course, assorted wurst. The bierhall features 39 German domestic and imported drafts on tap. For \$5, purchase a Haus key from a server or bartender and pour your own beer from a self-serve, iPad-controlled bier wall, where brews cost as little as 30 cents per ounce. L, D (daily). www.bruphilly.com. 1318 Chestnut St., 215.800.1079. **\$\$\$ Map 1, I5**

CAPOGIRO GELATO CAFE—Sweets. Find fine artisanal gelato and sorbetto in flavors like champagne mango, burnt sugar or Fior di Latte (made with milk sourced from a single herd in Lancaster County), plus coffee, sandwiches, soups and salads. B, L, D (daily). www.capogirogelato.com. 119 S. 13th St., 215.351.0900. **\$ Map 1, I5; 117 S. 20th St., 215.636.9250. Map 1, G5; 233 Chestnut St., 215.897.9999. Map 1, B5; 1625 E. Passyunk Ave., 215.462.3790.**

CHEU NOODLE BAR—Asian. This cozy spot focuses on noodle bowls with a variety of ingredients. The miso ramen bowl is a favorite and comes with pork shoulder, a soft-boiled egg and black garlic. Small plates include creative (not to mention tasty) fare like black garlic wings and pork pizza dumplings. L, D (daily). www.chounoodlebar.com. 255 S. 10th St., 267.639.4136. **\$-\$\$ Map 1, I6; 1416 Frankford Ave., 267.758.2269.**

INDEBLUE—Indian. Take your taste buds on a journey at this neighborhood hot spot. Go for the maharaja cheese board, shrimp and crab moileee or try other traditional Indian dishes as well as brunch classics with an Indian spin. L (M-F), D (daily), Br (Sa-Su). www.indebluerestaurant.com. 205 S. 13th St., 215.545.4633. **\$\$ Map 1, I5**

NOMAD PIZZA—Pizza. This casual corner spot with an industrial vibe dishes up wood-fired pies with quality ingredients, many from local producers. Pair ‘zas with wine or Italian sodas. Sweets fiends indulge in a Nutella pizza plus other desserts including ricotta cheesecake and artisanal sorbets. L F-Su, D (Tu-Su). www.nomadpizzaco.com. 611 S. 7th St., 215.238.0900. **\$\$ Map 1, J7**

NOMAD ROMAN—Pizza. As its name suggests, the cozier sister spot to Nomad Pizza dishes up thin-crust, Roman-style pies and highlights the same top-notch ingredients like nduja sausage, prosciutto di Parma, truffles and Castelvetroano olives. For a spin on a regional classic, try the Trenton tomato pie, an “upside down pizza” twist. www.nomadpizzaco.com. 1305 Locust St., 215.644.9287. **Map 1, H6**



Specializing in California-style burritos featuring fresh ingredients in sumptuous portions at affordable prices.

Lunch and Dinner
BYOB

el fuego

723 Walnut Street • 215.592.1931

[Facebook.com/elfuegoburritosphilly](https://www.facebook.com/elfuegoburritosphilly)
www.elfuegophilly.com



SAMPAN—Pan-Asian. This 95-seat gem showcases chef Michael Schulson’s passion for Asian flavors and exquisite presentations. Mix and match from the array of reasonably priced small plates at dinner and happy hour. Head around back to the Graf-fiti Bar for cocktails. D (daily). www.sampanphilly.com. 124 S. 13th St., 215.732.3501. **\$\$ Map 1, I5**

STRANGELOVE’S—American. This 20-tap, two-floor restaurant craft beer destination serves up inspired vegetarian, vegan and omnivore-friendly fare. L, D (daily), Br (Sa-Su). www.strangelovesbeerbar.com. 216 S. 11th St., 215.873.0404. **\$\$ Map 1, I5**

TREDICI ENOTECA—Mediterranean. This lovely dining room focuses on small plates like bacon wrapped dates stuffed with manchego and blue cheese and chicken meatballs. Also on the menu find a raw bar plus spinach gnocchi with butternut squash and brown butter and Moroccan-spiced ribs in addition to an extensive wine list and house-made cocktails. L, D (daily). www.tredicienoteca.com. 114 S. 13th St., 267.928.2092. **Map 1, I5**

Northern Liberties & Fishtown

CAKE LIFE BAKE SHOP—Bakery. The duo behind this all-day cafe and bake shop claims a “Cupcake Wars” victory. In addition to top-notch cupcakes, look for sweet and savory pastries and cakes (by the slice). The cafe also serves Rival Bros. coffee and has a BYOB policy. B, L (Tu-Su), D (Tu-Sa). www.cakelifebakeshop.com. 1306 Frankford Ave., 215.278.2580. **\$**

FRANKFORD HALL—German. This open-air German beer garden may be the liveliest spot in Stephen Starr’s empire. Counter service, long communal tables and alfresco ping-pong create a down-to-earth backdrop for enjoying huge steins of traditional German and craft beers. Fill up on casual fare like sauerkraut, schnitzel, spaetzle, bratwurst, weisswurst and käsekrainer. L (Sa-Su), D (daily). www.frankfordhall.com. 1210 Frankford Ave., 215.634.3338. **\$ Map 1, L1**

FRONT STREET CAFE—American. Health-conscious, on-trend dishes are on the menu at this light-filled, rustic-chic spot that aims to satisfy all needs with a sit-down restaurant, coffee shop, juice/smoothie bar, beer garden, outdoor terrace and even two full bars. Try acai breakfast bowls, turkey burgers, kale Caesar salads, tostada grain bowls, blackened culotte steak and spaghetti squash with lentil meatballs. B, L, D (daily). www.frontstreetcafe.net. 1253 N. Front St., 215.515.3073.

LA COLOMBE—Coffeeshop. Founded by locals, this Euro-style café pours top-notch coffee following five principles: fairness, longevity, opportunity, water and strict earth consciousness. The Fishtown HQ offers a hip, warehouse-like vibe and friendly staff for relaxing with a cuppa and tucking into tasty pastries. B, L, D (daily). www.lacolombe.com. 130 S. 19th St., 215.563.0860. **\$ Map 1, G5; 1414 S. Penn Square, 215.977.7770. Map 1, G5; 1335 Frankford Ave., 267.479.1600; 100 S. Independence Mall W., 267.479.1650.**

LOVE & HONEY FRIED CHICKEN—American. Todd and Laura Lyons’ temple to fried chicken offers locally sourced, humanely raised and processed birds (read: no antibiotics or hormones). The result is back-to-basics good food with fixins’ including mac and cheese, cornbread muffins and potato salad. Save room for pie (sweet potato, banana



pudding, flavor of the month). L, D (W-Su). www.loveandhoneyfriedchicken.com. 1100 N. Front St., 215.789.7878. **Map 1, L1**

PIZZA BRAIN—Pizza. This socially and environmentally aware pizza shop is the world's first pizza museum and has a claim to fame in the Guinness Book of World Records with the largest stock of pizza memorabilia. The restaurant also has vegan options and delivery. L, D (daily). www.pizzabrain.org. 2313 Frankford Ave., 215.291.2965. **\$**

WM. MULHERIN'S SONS—Italian. Set in a restored 1890s whiskey blending and bottling facility, this well-regarded spot serves hearty Italian classics, wood-fired pizzas and strong drinks. The restaurant has three rustic, yet beautiful rooms: a bar, a dining room with a fireplace and a second dining room featuring an open kitchen with a wood-fired oven and grill, so you can watch the magic as you eat. D (daily), Br (Sa-Su). www.wmmulherinssons.com. 1355 N. Front St., 267.291.1355. \$\$\$

Old City

THE BOURSE FOOD HALL—International. This beautiful 1895 Victorian building on the National Register of Historic Places has recently undergone a major renovation. Scheduled to open in August of 2018, the country's first commodities exchange becomes a hip space for artisanal food and retail recalling New York's Chelsea Market. Check website for latest details and hours. www.theboursephilly.com. 111 S. Independence Mall E., no phone at press time. **Map 2, C5**

DINARDO'S FAMOUS SEAFOOD—Seafood. This family-owned seafood house is an Old City institution, serving up top-notch steamed hard-shell crabs and sautéed garlic crabs since 1976. Grilled steaks, chicken and fresh pasta are also featured. L (M-Sa), D (daily). www.dinardos.com. 312 Race St., 215.925.5115. \$\$\$ **Map 1, K4**

FEZZIWIG'S SWEET SHOPPE—American. This charming eatery located near all the sites combines an old fashioned ice cream parlor/sweet shop with a classic soda fountain and a modern cafe. In addition to delectable desserts and pastries, find savory treats including burgers, cheesesteaks and hand-cut fries. B, L, D (daily). www.fezziwigsphiladelphia.com. 267.457.3608. **\$ Map 2, D4**

FORK—American. One of Old City's original restaurant pioneers, Fork offers simple elegance with an open kitchen. Menu changes often. D (daily), Br (Su). www.forkrestaurant.com. 306 Market St., 215.625.9425. \$\$\$ **Map 1, K5**

JOLLY'S DUELING PIANO BAR—American. Founded by Jolly Weldon, this rollicking piano bar features, yes, two instruments with pianists duking it out with musical selections from rock, pop and more. Pizzas provide sustenance for all-night singalongs with craft beers and specialty cocktails fueling the fun. D (daily). www.jollysduelingpianobar.com. 215.238.1333. **\$ Map 2, E6**

THE OLDE BAR—Seafood. This handsome Jose Garces spot respects tradition with seafood and standouts like oyster po'boy and Olde Bar fries with crab, lobster butter and oyster stout-cheddar fondue. D (daily). www.theoldebar.com. 125 Walnut St., 215.253.3777. **\$**

ROYAL BOUCHERIE—French. "Top Chef" winner Nicholas Elmi's butchery fits right in with Old City's historical vibe. The cozy two-level space features two bars (one for drinks and the other for oysters) with exposed brick walls, a tin ceiling and antique furnishings. But the mood is anything but dusty. Diners dig into hearty dishes like lamb crepinette and steak au poivre in stick-to-your-ribs portions, while a feel-good soundtrack veers from Ella Fitzgerald to Stevie Wonder and Arcade Fire. Cocktail connoisseurs find classics and contemporary choices, while oenophiles look to a Euro-heavy list. D (daily). www.royalboucherie.com. 52 S. Second St., 267.606.6313. \$\$\$ **Map 1, K5**

ZAHAV—Middle Eastern. At his heralded restaurant perched above the street, James Beard Award-winning chef Michael Solomonov carefully prepares creative, contemporary Israeli food. A well-edited a la carte menu highlights small plates and salatim—a colorful collection of cold salads that traditionally starts meals in Israel. The "Yatim" tasting option offers a good base for those new to the cuisine and includes Solomonov's famous hummus (we like the Turkish variety, which is served warm in its own mini cast-iron pan) and feather-light laffa bread. Heftier fare includes coal-fired kebabs and a hangar steak. Inventive cocktails; wine list with Israeli varietals. Reservations recommended. D (daily). www.zahavrestaurant.com. 237 St. James Place, 215.625.8800. **\$ Map 1, K6**

Penn's Landing & Waterfront

CHART HOUSE—Seafood. Waterfront views of Penn's Landing, the Delaware River and the Philadelphia skyline set a dramatic stage for updated classic steaks and seafood entrées, along with renowned prime rib specials. D (daily), Br (Su). www.chart-house.com. 555 S. Columbus Blvd., 215.625.8383. **\$ Map 1, L7**

HUGO'S FROG BAR AND CHOP HOUSE—Steakhouse. Treat yourself to an authentic Chicago dining experience, which includes USDA Gibsons Prime Angus Beef as well as other favorites like fresh fish and seafood, salads and sandwiches. An extensive wine list, waterfront views and live entertainment add to the special vibe. Inside Sugar House Casino. L, D (daily). www.sugarhousecasino.com/dining/hugo-s-frog-bar-chop-house. 1001 N. Delaware Ave., 215.717.3900. **Map 1, L1**

KEATING'S ROPE & ANCHOR, BAR + KITCHEN—Contemporary American. Spend an afternoon on the patio Hilton's Penn's Landing outpost, tucking into oak-smoked salmon or a New York strip steak while gazing out at the Delaware River. Inside, a buzzy bar pours handcrafted cocktails to the tunes of a live band. B, L, D (daily). www.ropeandanchorkitchen.com. 201 S. Columbus Blvd., 215.521.6509. **\$\$\$ Map 1, L5**

LA PEG—French. This contemporary French brasserie and beer garden is located inside the FringeArts building along the Delaware River Waterfront. The crowd-pleasing menu features cauliflower steak and steak frites, butternut squash soup and cheeseburgers. D (daily), Br (Sa-Su). www.lapegbrasserie.com. 140 N. Columbus Blvd., 215.375.7744. **\$ Map 1, L4**

MOSHULU—American. This four-masted ship has been gloriously transformed into a riverside dining destination, serving tasty dishes with attentive service and stunning views. Private party accommoda-

tions available. D (daily), Br (Su). www.moshulu.com. 401 S. Columbus Blvd., 215.923.2500. \$\$\$ **Map 1, L6**

South Philly & Italian Market

AMERICAN SARDINE BAR—Pub/Bar. From the owners of the South Philly Tap Room comes ASB, a resto-bar with a menu that focuses on a selection of craft beers (16 on tap), hearty sandwiches and yummy pub grub. L, D (daily) Br (Su). www.american-sardinebar.com. 1800 Federal St., 215.334.2337. **\$**

CHICKIE'S & PETE'S—American. This famous bar and seafood house originated in northeast Philly back in the '70s, and today has nearly a dozen locations. It is much loved by locals for its sports fans and "crabfries," fresh seafood and a party-like atmosphere. One of its most popular locations sits mere steps from the city's pro sports stadiums in South Philadelphia. Bar open daily until 2 am. L, D (daily). www.chickiesandpetes.com. 4010 Robbins Ave., 215.338.3060; 1526 Packer Ave., 215.218.0500. **\$**

FEDERAL DONUTS—Sweets. James Beard Award-winner Michael Solomonov's little gem offers fresh cake donuts at 7 am, and then serves Korean-style fried chicken starting at 11 am until they run out. Hours vary by location. www.federaldonuts.com. 1219 S. Second St., 267.687.8258. **\$**; 1632 Sansom St., 215.665.1101. **Map 1, H5**

GENO'S STEAKS—Cheesesteaks. Geno's serves up classic steaks with Philly flair. The inevitable line provides time to figure out what to order; when you get to the counter, make it fast and simple. Cash only. B, L, D (daily, 24 hours). www.genossteaks.com. 1219 S. Ninth St., 215.389.0659. **\$**

GREEN EGGS CAFE—American. This brunch-style restaurant with two locations is a favorite for mouth-watering options like smoked Atlantic salmon omelet, Belgian waffles and a variety of sandwiches and salads. (Cash only). B, L, Br (Daily). 1306 Dickinson St., 215.266.3447. **\$**; 719 N. Second St., 215.922.3447.

JIM'S SOUTH STREET—Cheesesteaks. Since 1976, visitors and locals alike have been flocking to this temple to cheesesteak inside an Art Deco storefront on lively South Street. Hoagies, too. L, D (daily). www.jimssouthstreet.com. 400 South St., 215.928.1911. **\$ Map 1, K7**

PAT'S KING OF STEAKS—Cheesesteaks. Billed as the originator of the cheesesteak sandwich, this shop is a favorite that attracts fans from around the world. Local tip: Order "Whiz wit." B, L, D (daily 24 hours). www.patskingofsteaks.com. 1237 E. Passyunk Ave., 215.468.1546. **\$**

POP'S HOMEMADE ITALIAN ICE—Ice Cream. Started in 1932 as a humble pushcart by Filippo "Pop" Italiano, this local "best of" scoops Philly's own water ice made daily with fresh ingredients in flavors like ginger ale, amaretto and iced tea. Frozen treat lovers also find "popalanches" (soft ice cream blended with candy toppings), sundaes, gelato, ice cream sandwiches and shakes. Daily till 11 pm. www.popsice.com. 1337 Oregon Ave., 215.551.7677. **\$**

SABRINA'S CAFE—American. Cozy up in one of three locations of this family-owned neighborhood cafe, heralded for having one of the best brunches in town. BYOB. Hours vary by location. www.sabrinascfe.com. 910-912 Christian St., 215.574.1599. **\$ Map 1, J8**; Art Museum, 1804 Cal-lowhill St., 215.636.9061. **Map 1, G3**; University City, 34th and Powelton streets, 215.222.1022.

South Street & Queen Village

BISTROT LA MINETTE—French. Chef/owner Peter Woolsey has created an authentic French bistro that reflects his passion for detail—even the original art and furnishings evoke the flavor of France's celebrated culinary regions. D (daily), L (Sa-Su) www.bistrotlaminette.com. 623 S. Sixth St., 215.925.8000. **\$ Map 1, J7**

BRAUHAUS SCHMITZ—German. This Philly original claims the largest selection of German beer in the city with 30 on draft and more than 80 bottles from 25 countries. Executive chef Jeremy Nolen prepares classic German fare like housemade bratwurst, schweinshaxen and schnitzel. L, D (daily). www.brauhauschmitz.com. 718 South St., 267.909.8814. **\$-\$\$ Map 1, J7**

ELA—American. The kitchen at this bar and restaurant is run by chef Jason Cichonski and features an inventive, rotating menu, an extensive wine and beer program and an inspired cocktail list. The modern yet rustic setting allows diners a comfortable place to enjoy seriously good food. D (daily), Br (Su). www.elaphilly.com. 627 S. Third St., 267.687.8512. **Map 1, K7**

LAS BUGAMBILIAS—Mexican. At this intimate, authentic Mexican restaurant, chef/owner Carlos Molina offers high-quality, freshly prepared food from three different regions in Mexico. Be sure to sample the imaginative array of margaritas and the homemade desserts. L (Tu-Su), D (daily), Br (Su). www.lasbugambiliashilly.com. 148 South St., 215.922.3190. **\$ Map 1, L7**

THE TWISTED TAIL—American. A lively bourbon-and-blues emporium featuring a menu of charcoal-grilled fare, 40-plus bourbons and plenty of craft beer. Dine at rustic wooden table indoors or out, then climb the stairs for some rockin' live music. L (M-F), D (daily), Br (Sa-Su). www.thetwistedtail.com. 509 S. Second St., 215.558.2471. **\$ Map 1, K6**

University City

BABY BLUES BBQ—Barbecue. Get some Southern hospitality at this BBQ joint amongst a collegiate crowd. Expect Memphis-style ribs and other favorites like grilled black tiger shrimp. Wash it down with a beer from the selection on tap. L, D (daily). www.babybluesphilly.com. 3402 Sansom St., 215.222.4444. **\$ Map 1, D5**

COZARA—Japanese. Chef Zama Tanaka's bi-level Japanese pub, situated in Chestnut Square Plaza just a block from the Chestnut Street Bridge, features tapas-style small plates with a focus on yakitori. You won't find sushi here, but just about everything else you can imagine, including a whole chicken yakitori served with yakitori sauce and honey mustard miso, is on the extensive menu. L (M-F), D (daily). www.cozaraphilly.com. 3200 Chestnut St., 267.233.7488. **\$\$\$ Map 1, D5**

DISTRITO—Mexican. From Philly's acclaimed chef/ restaurateur Jose Garces comes this high-energy spot with a menu of fresh interpretations of classic Mexican fare, all inspired by the spirited culture and cuisine of Mexico City. L, D (daily). www.districtorestaurant.com. 3945 Chestnut St., 215.222.1657. **\$ Map 1, C5**

MARIGOLD KITCHEN—American. Located inside a traditional Victorian row house, this restaurant features the culinary alchemy of Andrew Kochan

and Tim Lanza. Each build tasting menus meant to "surprise," with dishes drawing from the seasons, that are as beautiful to look at as they are tasty to eat. D (Tu-Sa). www.marigoldkitchenbyob.com. 501 S. 45th St., 215.222.3699. **\$ Map 1, A7**

VIETNAM CAFÉ—Vietnamese. With this small but sleek outpost of Chinatown's popular Vietnam Restaurant, owner Benny Lai has brought his beloved Vietnamese cuisine to the University City neighborhood. Expect savory noodle soups and dishes, seafood, rice platters and the chef's special barbecued appetizer sampler. L, D (daily). www.eatatvietnam.com. 816 S. 47th St., 215.729.0260. **\$**

WALNUT STREET CAFE—American. The team behind New York City's Michelin-starred Rebelle brings its winning formula to the banks of the Schuylkill with this venture. A sleek and airy two-level space opens up to several dining areas for all-day grazing, even grab-and-go options (pastries, Rival Bros. coffee). Dishes run the gamut from a cheeseburger to lasagna and porterhouse steak for two, laced with a Bordelaise sauce. The eclectic 130-bottle wine list also pours more than 40 by the glass. B, L (M-F), D (daily), Br (Sa-Su). www.walnutstreetcafe.com. 2929 Walnut St., 215.867.8067. **\$ Map 1, E5**

WHITE DOG CAFE—American. This homey, antiques-filled dining room is as well known for its food as it is for its social activism. Dine on classic dishes made from locally grown and organic ingredients, like chicken liver mousse, soups and sandwiches, and omelets made with cage-free eggs. L (M-F), D (daily), Br (Sa-Su). www.whitedog.com. 3420 Sansom St., 215.386.9224. **\$-\$\$ Map 1, D5**

Washington Square

AMIS—Italian. At this convivial trattoria (one of three Philadelphia eateries by celebrated Chef Marc Vetri), dig into tapas-style fare like bone-in strip steak, pork chop parmigiana and monkfish cacciatore. D (daily), Br (Su). www.amisphilly.com. 412 S. 13th St., 215.732.2647. **\$ Map 1, I6**

BODHI COFFEE—Coffee House. This artisanal coffee shop is known for sourcing single-origin beans from the well-known Stumptown Coffee Roasters, based out of Portland, Oregon, to create flavorful drinks. Stop in for an expertly crafted beverage and organic, locally sourced fare, including pastries from Au Fournil, cookies from Flying Monkey and bagels and spreads from South Street Bagels. B, L (daily). www.bodhicoffeephila.com. 410 S. Second St., 267.239.2928. **\$ Map 1, K6**

BUD AND MARILYN'S—American. Head toward the neon sign on 13th & Locust to this mid-century joint that's garnered plenty of buzz. In "Mad Men"-style environs, tuck into upgraded retro-American classics including fried chicken with housemade hot sauce and short rib stroganoff. On Sundays, groups and diners with kids in tow dig into caramelized apple French toast and lemon ricotta pancakes during brunch. L (M-F), D (daily), Br (Sa-Su). www.budandmarilyns.com. 1234 Locust St., 215.546.2220. **Map 1, I6**

CRAFTSMAN ROW SALOON—American. Located along historic Jeweler's Row, Craftsman Row Saloon is an American-style restaurant from the owners of Opa. At this spot, find classics with a twist, like juicy burgers topped with mac and cheese or sausage gravy, plus local beers and spiked milk-

shakes. L, D (daily). www.craftsmanrowsaloon.com. 112 S. 8th St., 215.923.0123. **\$ Map 1, J5**

EL FUEGO—Mexican. This happening spot whips up tasty "California-style" burritos, along with tacos, quesadillas and soups. The lunch hour is particularly lively, so get there early. L, D (M-Sa). www.elfuegophilly.com/. 723 Walnut St., 215.592.1931. **\$ Map 1, J5**

LITTLE SPOON CAFE—Coffee House. Locals and visitors alike flock to this cheery brunch spot known for its adorable kitschy decor. In-house prepared offerings include soups, pastries and entrees, plus coffee drinks, from local roaster Philly Fair Trade Coffee. Their stellar brunch menu includes lemon ricotta pancakes, bacon grilled cheese and a crowd-pleasing Monte Cristo sandwich made with honey ham, smoked gouda, a fried egg and jalapeno mayo. B, L (daily), Br (Sa-Su). www.littlespooncafe.com. 1500 South St., 267.587.6559. **\$ Map 1, H7**

PERCY STREET BARBECUE—Barbecue. For classic barbecue entrees and sides, including fried green tomatoes, collard greens and buttered biscuits, bring the family to this laid-back Southern-inspired joint. Delicious smoked meats, an extensive supply of bourbon and beer and even a vintage jukebox are all accounted for at this delicious barbecue stop. L (Th-Su), D (daily). www.percystreet.com. 900 South St., 215.625.8510. **\$ Map 1, J7**

TALULA'S DAILY—American. Located across the street from leafy Washington Square, Aimee Olexy's casual counterpoint to Talula's Garden combines a bustling market carrying "real, wholesome" fare and a charming sit-down restaurant serving a seasonal, five-course set-price menu. Reservations are a must for the in-demand eatery, so book well in advance. Market: B, L, D (daily). Restaurant: D (Tu-Su, one seating only). www.talulasdaily.com. 208 W. Washington Square, 215.592.6555. **\$-\$ Map 1, J6**

VEDGE—Vegan. Husband-and-wife team Richard Landau and Kate Jacoby give vegan cuisine a good name at their inventive, modern bistro inside a handsome row house. In the chef's deft hands, roots and leaves become the stuff of haute cuisine in dishes like "seared maitake mushroom" with celery root fritter, smoked remoulade and leek ash vinaigrette. Cocktails with housemade syrups and bitters are also musts. Reservations required. D (M-Sa). www.vedgerestaurant.com. 1221 Locust St., 215.320.7500. **\$\$\$ Map 1, I6**

Westside

DOTTIE'S DONUTS—Bakery. Jeff Poleon and Matt Quinn (formerly of Blackbird Pizzeria) bake up doughnuts that are not only tasty, but won't contribute (much) to your waistline. Here, the treats are vegan, but with flavors like rosewater pistachio and the "Homer" (a la "The Simpsons"); dessert fans don't miss the eggs or butter in traditional doughnuts. B, L (daily), D (M-F). 4529 Springfield Ave., 215.662.0379. **\$**

B.GOOD—American. This fast-casual started by two best friends now has locations up and down the East Coast, plus Canada and Switzerland. On the menu, find grain bowls, burgers, salads, smoothies and sides like hand-cut oven-baked sweet potato fries, all made with locally sourced, all-natural ingredients. L, D (daily). www.bgood.com. 280 E. Lancaster Ave., 484.417.6345. **\$**; King of Prussia Town Center, 150 Main St., 484.322.2110.





Entertainment August



The Gaslight

This bar and restaurant located in the historic district may exude a casual vibe, but it serves up a sophisticated take on pub grub. It's also a fun-loving spot with an extensive beer list, happy hour specials during the week and live entertainment on weekends. www.thegaslightphilly.com. 120 Market St., 215.925.7691. Map 1, K5



Rumor

Before hitting this Center City nightclub, make sure to don your best dancing shoes—stilettos preferred. With two large dance floors and multiple sound systems, the club has revelers partying till the wee hours. A private VIP vault and several bars offer rest stops for tired feet. www.rumorphilly.com. 1500 Sansom St., 215.988.0777. Map 1, H5



Parx Casino

Just 20 miles north of Center City, this casino offers unbeatable entertainment under one roof. Find 3,330 slot machines, 132 live table games, a 48-table poker room, restaurants, bars, even thoroughbred racing and a 1,500-seat entertainment venue. www.parxcasino.com. 2999 Street Road, Bensalem, Pa., 888.588.7279. Map 4, C3

Arcade & Billiards

BARCADE—As the name suggests, this cavernous space in Fishtown ingeniously combines a bar with an arcade, serving a stellar selection of craft beer to lovers of old-school games like Donkey Kong, Ms. Pacman and Space Invaders, which are all just \$.25 a game. Must be 21 or older to enter. M-Su noon-2 am. www.barcadephiladelphia.com. 1114 Frankford Ave., 215.634.4400.

BUFFALO BILLIARDS—Kick back at this casual Old City spot and enjoy happy hour specials as you chill out in one of the leather banquettes. For relaxation with a competitive edge, shoot pool at one of eight tables or choose from darts, shuffle board, Skee-Ball or foosball. M-F 4 pm-2 am, Sa-Su 2 pm-2 am. www.buffalobilliards.com. 118 Chestnut St., 215.574.7665. Map 1, K5

Bars & Lounges

ABBAYE—Locals will greet you with open arms in this homey Northern Liberties corner bar. Come for the music, cheesesteaks and fine Belgian beer. M-F 11:30 am-2 am, Sa-Su 10 am-2 am. www.theabbaye.net. 637 N. Third St., 215.627.6711. Map 1, K2

ASHTON CIGAR BAR—Enjoy the vast selection of 200 different cigars and an extensive bar list including wines, cordials and rare liquors at the only cigar bar open to the public in the city, complete with a state-of-the-art air purification system. Sa-Th 4 pm-2 am, F 2 pm-2 am. www.ashtoncigarbar.com.

com. 1522 Walnut St., 2nd floor, 267.350.0000. Map 1, H6

BARBARY—Dance the night away with great DJs, cheap drinks and disco lights, or take a break from all the action in the bar's cozy photo booth. Daily 10 pm-2 am. www.barbarylives.com. 951 Frankford Ave., 215.634.7400. Map 1, L1

THE BARDS—A purist's Irish pub that encourages pints of Guinness and a shot of Tullamore Dew, this Center City tavern is an ideal spot to wind down. M-F noon-2 am, Sa-Su 10 am-2 am. www.bardsirishbar.com. 2013 Walnut St., 215.569.9585. Map 1, G5

FADO IRISH PUB—This comfortable pub offers an escape to Victorian-era Dublin with nooks that seat from two to 12 people, plus fine Irish and European beers, a packed dance floor on the weekend and regular screenings of soccer matches. M-F 11:30 am-2 am. Open time varies on weekends for matches; Sa until 2 am, Su until midnight. www.fadoirishpub.com/philadelphia. 1500 Locust St., 215.893.9700. Map 1, H6

THE FRANKLIN BAR—Venture into this subterranean speakeasy located inside the former Franklin Mortgage & Investment Co. (a front for one of the largest booze running rings during Prohibition) for carefully crafted cocktails mixed with premium, seasonal and homemade ingredients. Daily 5 pm-2 am. www.thefranklinbar.com. 112 S. 18th St., 267.467.3277.

GRACE TAVERN—This low-key neighborhood spot offers comfort foods like burgers, sandwiches and bar snacks (think chicken fingers), plus some vegan options. The beer list is wide with several ciders and sour ales, too. Daily 11:30 am-2 am. www.gracetavern.com. 2229 Grays Ferry Ave., 215.893.9580. Map 1, F7

GRAFFITI BAR—True to its name, this fun-loving covered patio features the spray-paint art of local Philadelphians. Located behind the stylish Asian-fusion restaurant, Sampan, it also serves the same acclaimed food. Find it down the side alley. M-Tu 4 pm-10 pm, W-Th 4 pm-11 pm, F-Sa 4 pm-midnight, Su 4 pm-9 pm. www.sampanphilly.com. 124 S. 13th St., 215.732.3501. Map 1, I5

HOWL AT THE MOON—The talented staff at this dueling piano bar perform crowd favorites from the '70s to today and take requests, keeping the crowd dancing and singing along all night. Try a one of the signature cocktails or a "bucket of booze," which serves four or more people. Su-Tu open for events, W 7 pm-2 am, Th-Sa 6 pm-2 am. www.howlatthemoon.com. 258 S. 15th St., 215.546.4695. Map 1, H6

IRISH PUB—Munch on hearty pub fare and sip a brew at this fun, casual Philly favorite. Evenings draw a lively crowd of young professionals, visitors and even Philly sports stars and celebrities. M-Sa 11 am-2 am, Su 10 am-2 am. www.irishpubphilly.com.

com. 2007 Walnut St., 215.568.5603. Map 1, G5; 1123 Walnut St., 215.925.3311. Map 1, I5

JOLLY'S DUELING PIANO BAR—American. Founded by Jolly Weldon, this rollicking piano bar features, yes, two instruments with pianists duking it out with musical selections from rock, pop and more. Pizzas provide sustenance for all-night singalongs with craft beers and specialty cocktails fueling the fun. D (daily). www.jollysduelingpianobar.com. 215.238.1333. Map 2, E6

KHYBER PASS PUB—Settle in at one of the well-worn booths or at the bar in this no-frills pub for excellent Southern-style comfort food. The nearly 20 craft beers on tap rotate constantly and endless bottle choices hail from around the world. Daily 10 am-2 am. www.khyberpasspub.com. 56 S. Second St., 215.238.5888. Map 1, K5

KITE & KEY—This lively gastropub in the Fairmount neighborhood pours mostly local brews for a crowd of young professionals. Service here is fast and friendly. Daily 11 am-2 am. www.thekiteandkey.com. 1836 Callowhill St., 215.568.1818. Map 1, G3

LOCAL 44—Grab a drink at the 20-tap bar or a bite at the restaurant, and then shop more than 500 bottles of craft beer, including a well-stocked rare and limited edition library. M-F 11:30 am-2 am, Sa-Su 11 am-2 am. www.local44beerbar.com. 4333 Spruce St., 215.222.2337. Map 1, A6

LONDON GRILL—London Grill is a Fairmount institution, located steps from historic Eastern State Penitentiary. For years, its dark wood bar has hosted

locals looking for sophisticated bar fare. Look for events, like weekly quiz nights. M 4 pm-2 am, Tu-F 11 am-2 am, Sa-Su 10 am-2 am. www.londongrill.com. 2301 Fairmount Ave., 215.978.4545. Map 1, F2

MCGILLIN'S OLD ALE HOUSE—Opened in 1860, this historic taproom is Philly's oldest tavern and claims the city's first liquor license. Locals and visitors head here for the friendly crowd, hearty pub fare and 30 draft beers. Daily 11 am-2 am. www.mcgillins.com. 1310 Drury St., 215.735.5562. Map 1, I5

MILKBOY—These popular bars double as live music venues, featuring both local and nationally recognized performers. Each location boasts a signature roll-up garage-style window, weekday morning cocktails and delicious American food. It's free to hang out, but shows are usually ticketed. M-F 7 am-2 am, Sa-Su 11 am-2 am. milkboyphilly.com. 1100 Chestnut St., 215.925.6455. \$\$. Map 1, I5

MONK'S—For more than 20 years, this Center City spot has been earning raves throughout Philadelphia for its top selection of beer and a tasty food menu to boot. Located just off Spruce Street, Monk's occasionally gets limited distribution kegs shipped in from the farthest reaches of the country. Daily 11:30 am-2 am. www.monkscafe.com. 264 S. 16th St., 215.545.7005. Map 1, H6

THE NAUTI MERMAID CRAB HOUSE AND PIANO BAR—Jolly Weldon's sister spot to Jolly's Dueling Piano Bar combines all the rollicking singalong action with a classic Maryland crab house dining experience to boot. Dig into oysters, Maryland

crab cakes, Chesapeake pan-roasted rockfish, "boardwalk" fries and more, then join in the live music fun every night starting at 8 pm. Open daily. www.nautimermaidphilly.com. 110 Chestnut St., 215.238.0333. Map 2, E6

PHILADELPHIA DISTILLING—This modern warehouse in hip Northern Liberties makes a stunning setting not only for sampling spirits, but also for watching the distilling process. Hand-hammered copper stills and wooden fermentation vessels form the crux of the process here, one that dates back to 1854. Retail: Th-Su noon-11 pm. Bar: Th-F 4-11 pm, Sa-Su 1-11 pm. Tours/tasting: Th-F 6 pm; Sa-Su 2, 4 and 6 pm (book online). www.philadelphiadistilling.com. 25 E. Allen St., 215.671.0346.

PUB ON PASSYUNK EAST—This hipster hotspot in South Philly (aka "P.O.P.E.") is beloved for its long and diverse beer list, jukebox, a friendly and knowledgeable bar staff and endless inspiration for people-watching. Daily 11 am-2 am. www.pubonpassyunkeast.com. 1501 E. Passyunk Ave., 215.755.5125.

THE RANSTEAD ROOM—Hidden off a side street adjacent to restaurant El Rey, this dimly lit enclave serves libations minted at the turn of the century in true speakeasy style. Look for the "RR" on the door. Daily 6 pm-2 am. 2013 Ranstead St., 215.563.3330. Map 1, G5

SIDECAR BAR & GRILLE—This intimate neighborhood pub has an enormous selection of beer and a Cajun-inspired dinner menu. Six-packs to go are

SUMMER ON THE Waterfront

The destination for every summer mood

NOW OPEN DelawareRiverWaterfront.com

(FROM LEFT) COURTESY EACH BUSINESS



THE GUIDE

also available. M-F 4 pm-2 am, Sa-Su 8 am-2 am. www.thesidecarbar.com. 2201 Christian St., 215.732.3429. **Map 1, F8**

SOUTH PHILLY BAR & GRILL—High-definition plasma TVs, Philly sports fans galore, great pub fare and plenty of beer are the hallmarks of this game-day destination. There are also a dozen beers on draught, daily specials and a kid's menu, too. Daily 11 am-2 am. www.southphillybar.com. 1235 E. Passyunk Ave., 215.334.3300.

SOUTHWARK—For Old World style and some of the best classic cocktails in town, come to this gem of a bar right off of South Street. W-M 5 pm-2 am. www.southwarkrestaurant.com. 701 S. Fourth St., 267.930.8538. **Map 1, K7**

STANDARD TAP—This old school two-story bar, built by a former Sam Adams brewmaster, has all the cozy pub charm with the full menu of a proper restaurant. A rotating roster of more than 20 locally produced beers and chalkboards dispersed throughout display the daily creations of chef Joel Mazigian, whose repertoire includes terrines, wild game entrees and decadent desserts. M-F 4 pm-2 am, Sa-Su 11 am-2 am. www.standardtap.com. 901 N. Second St., 215.238.0630. **Map 1, K1**

STRATUS ROOFTOP LOUNGE—This sophisticated open-air social space on the roof of the Hotel Monaco, one of only a few in the city, is the place to be for cocktails and a bit of history. Sip on top-shelf drinks beneath a swaying maple, and warm up by a 30-foot-long fireplace. The lounge rises above Independence Mall, and views include Independence Hall, Washington Square, Liberty Bell Visitor Center and the city skyline. Tu 5-10 pm, W-Th 5 pm-midnight, F till 2 am, Sa 7 pm-2 am. www.stratuslounge.com. 433 Chestnut St., 11th floor, 215.925.2889. **Map 1, K5**

TIKI—Hang 10 at this fun bar channeling Polynesian tiki and California surf rock. With two levels, there's plenty of space to chill, from the bar and open kitchen on the ground floor to the roof deck. M-Sa 5 pm-2 am, Su 1 pm-11 pm. www.tikiphilly.com. 102 S. 13th St., 215.309.3435. **Map 1, H5**

TIR NA NOG—This lively spot brings Ireland to Philly with an ambience that evokes the Emerald Isle. Join locals for happy hour and watch European football on the big-screen, while sipping expertly poured Guinness, naturally. M-F 11 am-2 am, Sa-Su 8 am-2 am. www.tirnanoghilly.com. 1600 Arch St., 267.514.1700. **Map 1, H4**

VESPER—The formerly private Vesper Club has reopened as a restaurant and lounge with a speakeasy vibe, serving up toasts, tastes and steak dinners. At the bar, classic cocktails are on the menu, from the negroni to the French 75. Live and local music command attention seven nights a week in the Skyline Room. M-F 3:30 pm-2 am, Sa 5 pm-2 am. www.vesperphilly.com. 223 Sydenham St., 267.603.2468. **Map 1, H5**

THE VICTORIA FREEHOUSE—This authentic British pub brings London to Philly with craft beers, ciders and cask ales imported from the UK. Pair your pint with traditional pub favorites like bangers and mash and sticky toffee pudding. M-Th noon-midnight, F-Sa noon-2 am, Su 11 am-midnight. www.victoriafreehouse.com. 10 S. Front St., 215.543.6089. **Map 1, J5**

VINTAGE—This gorgeous Midtown Village wine bar has an impressive list of reds, whites and everything in between. It's *vino* without the



The Nauti Mermaid is a lively eating, drinking and singing destination. It's a place to enjoy, have a drink and a nibble, or a full dinner and join in the songs. Our menu is inspired by our childhood memories of the great crab houses of Maryland and the eastern shore. It's fun, it's lively, it's the Nauti Mermaid.

Open lunch & dinner 7 days a week
Nauti Hour 4-7 Mon-Fri
110 Chestnut Street • 215.238.0333
nautimermaidphilly.com



WE'RE PACKIN' HEAT.

GENO'S GEAR

RIGHT ACROSS THE STREET AT 9TH & PASSYUNK



LEARN TO SAIL | CAPTAINED CHARTERS SEASON-LONG MEMBERSHIPS

An amazing experience awaits you – whether you hop on board for a chartered sunset cruise, fulfill your dream to learn how to sail or choose a membership which allows you to skipper a boat on your own – you'll experience the city in a way that you won't find anywhere else!

CHARTERS are led by a USCG licensed Captain on fully insured, late-model sail boats that are fully optimized with the newest gear and safety equipment.

Docked at:
Penn's Landing Marina
301 S. Christopher Columbus Blvd.
Philadelphia PA 19106
May through October

866-724-5101
philadelphia@sailtime.com
<http://www.sailtime.com/philadelphia>



RIDE



PHLASH® is your quick, convenient and affordable connection throughout Center City Philadelphia!

GET AN ALL-DAY PASS FOR ONLY \$5

or pay \$2 per ride. Purchase your pass on board a PHLASH® bus, at a Visitor Center location, or online. Visit RidePhillyPHLASH.com for more information.

2018 Service Schedule:

March 30 – April 29;
September 7 – November 18
Weekend Service (Runs Friday - Sunday)

May 1 – September 3;
November 23 – December 30
Daily Service (Runs 7 days a week)

PHLASH® runs 10:00 a.m. – 6:00 p.m.
Service every 15 minutes

- Children 4 and under and Seniors ride FREE
- FREE with SEPTA Key, TrailPass, TransPass, one-day Independence Pass or Family one-day Independence Pass



The Philly PHLASH® Downtown Loop seasonal transit program is managed by the Independence Visitor Center Corporation (IVCC). PHLASH® vehicle service is provided by Fleet Group, Inc.

ENTERTAINMENT



pretension. M-F 4 pm-2 am, Sa-Su noon-2 am. www.vintage-philadelphia.com. 129 S. 13th St., 215.922.3095. **Map 1, I5**

X LOUNGE—This ultramodern spot is the jewel of the major expansion at sprawling Parx Casino in Bucks County. Cushy seating, luxury finishes and additional gaming opportunities occupy the airy space. Have a signature cocktail like the Amigas Paloma and a few of the small plates (think edamame truffle potato dumplings or fish tacos) before you head back to the tables. Th 4-10 pm, F 4 pm-2 am, Sa 2 pm-2 am, Su noon-9 pm. www.parxcasino.com/xlounge. 2999 Street Road, Bensalem, Pa., 888.588.7279. **Map 4, C3**

Casinos

SUGARHOUSE CASINO—Wager on having a fantastic time at this 45,000-square-foot casino on the Delaware River waterfront in the Fish-town neighborhood. The huge gaming floor offers slots, as well as live table games such as craps, blackjack and poker. On-site dining, free parking and valet available. Daily 24 hours. www.sugarhousecasino.com. 1001 N. Delaware Ave., 877.477.3715. **Map 1, L1**

VALLEY FORGE CASINO—This casino about 30 minutes beyond Philly city limits boasts more than 600 slot machines, along with 50 table games, including blackjack, craps and roulette. On-site dining and nightlife options range from fine steak at Revolution Chop House to live entertainment at The Vault. Accessible from Routes 202, Interstate 76 and the Pennsylvania Turnpike. Daily 24 hours. www.vfcasino.com. 1160 First Ave., King of Prussia, Pa., 610.354.8118.

Classical & Opera

THE PHILADELPHIA ORCHESTRA—Founded in 1900, the Philadelphia Orchestra has distinguished itself as one of the leading orchestras in the world, and is led by dynamic music director Yannick Nézet-Séguin. This month: Festive Fireworks, **Aug. 1**; Symphonic Shakespeare, **Aug. 2**; The Planets: An Odyssey, **Aug. 3**; "Harry Potter and the Sorcerer's Stone" in Concert, **Aug. 4**; Mozart and Mahler, **Aug. 8**; Young Virtuosi: Carnival of the Animals, **Aug. 9**; All Bernstein: Celebrating 100 Years, **Aug. 10**; "Star Wars: A New Hope," **Aug. 11**; The Orchestra Unleashed, **Aug. 15**; Captivating Classics, **Aug. 16**; Joshua Bell With The Philadelphia Orchestra, **Aug. 17**; The Red Violin with Joshua Bell, **Aug. 18**. www.philorch.org. Kimmel Center for the Performing Arts, 300 S. Broad St., 215.893.1999. **Map 1, H6**

Comedy

COMEDYSPORTZ—For more than 25 years, this improvisational comedy troupe has been earning raves along with laughs. Two teams of funny guys and gals compete for points with a referee calling the action. Audience participation is encouraged. Arrive early, as seating is limited. \$20, \$15 students, seniors and military. Sa 7:30 pm and 10 pm. www.comedysportzphilly.com. 2030 Sansom St., 484.450.8089. **Map 1, G5**

HELIUM COMEDY CLUB—Local talent and national headliners take the stage at this club, just off Rittenhouse Square. This month: Krystyna Hutchinson and Corinee Fisher, **Aug. 2-4**; Mary Radzinski, **Aug. 5**; Girl With No Job, **Aug. 6-7**; Blake Wexler, **Aug. 8**; Kevin Nealon, **Aug. 9-11**; John Crist,



Aug. 13-14: J-L Cauvin, **Aug. 15:** Josh Blue, **Aug. 17-8:** Dan Soder, **Aug. 23-25:** Chip Chantry, **Aug. 29:** Arnez J, **Aug. 30-31:** www.heliucomedy.com. 2031 Sansom St., 215.496.9001. **Map 1, G5**

PUNCH LINE PHILLY—A part of the thriving entertainment scene in Fishtown, this comedy club, restaurant and bar will send you laughing all the way home with new performances each week. The 300-seat venue features VIP seating and an outdoor patio. The bar offers local craft beers, cocktails and wines by the glass. This month: Andrew Santino, **Aug. 1-4;** Melissa Villasenor, **Aug. 9-11;** Pauly Shore, **Aug. 16-18.** www.punchlinephilly.com. 33 E. Laurel St., 215.606.6555.

THE N CROWD—This short-form improvisational comedy group performs an 80-minute show at 7 pm every Friday. A frequent participant in regional festivals, the N Crowd is known for its originality and humor. \$12 in advance, \$15 at the door. www.phillyncrowd.com. 2030 Sansom St., 215.253.4276. **Map 1, K3**

Concert Venues

BB&T PAVILION—This amphitheater-style venue on the Camden, New Jersey, waterfront plays host to large concerts by the nation’s most popular artists. Upcoming: Chicago and REO Speedwagon, **Aug. 1;** Keith Urban, **Aug. 3;** Jeff Beck, **Aug. 4;** Phish, **Aug. 7-8;** Rob Zombie and Marilyn Manson, **Aug. 9;** Wiz Khalifa and Rae Sremmurd, **Aug. 10;** Counting Crows, **Aug. 11;** Penatonix with Echosmith and Calum Scott, **Aug. 14;** Breaking Benjamin and Five Finger Death Punch; **Aug. 15;** Jason Aldean, **Aug. 25;** Godsmack and Shinedown, **Aug. 26.** www.waterfrontamphitheater.com. 1 Harbour Blvd., Camden, NJ, 800.745.3000. **Map 1, M6**

ELECTRIC FACTORY—Big-name and up-and-coming acts appear at this cavernous, mostly standing-room venue with a busy calendar. Ticket prices and show times vary. This month: Glassjaw and Quicksand, **Aug. 1;** Beres Hammond, **Aug. 4;** Alkaline Trio, **Aug. 19.** www.electricfactory.info. 421 N. Seventh St., 215.627.1332. **Map 1, J3**

FESTIVAL PIER—This outdoor venue at Penn’s Landing offers beautiful views and a fantastic place to see concerts and events in warm weather. This month: Rise Against With Afi, **Aug. 4;** 311 and The Offspring, **Aug. 10;** Needtobreathe, **Aug. 19;** O.A.R., **Aug. 21.** www.festivalpierphilly.com. Columbus Boulevard and Spring Garden Street, 215.629.3200. **Map 1, L2**

THE FILLMORE PHILADELPHIA—Fishtown’s legendary Ajax Metal Factory has been transformed into a state-of-the-art 2,500 capacity venue, honoring the traditions of historic Fillmore music halls and weaving in some Philly flavor. On the top floor, The Foundry serves as a smaller venue where local bands and DJs take the stage. This month’s highlights: Playboi Carti, **Aug. 14;** The Gaslight Anthem, **Aug. 15;** Descendents, **Aug. 23.** www.thefillmorephilly.com. 29 E. Allen St., 215.309.0150. **Map 1, L1**

KIMMEL CENTER FOR THE PERFORMING ARTS—This elegant entertainment complex houses multiple stages in the hub of Philadelphia’s Avenue of the Arts. This month: La Noche, **Aug. 13;** Sittin’ In, **Aug. 15.** www.kimmelcenter.org. 300 S. Broad Street, 215.670.2300. **Map 1, H6**

MANN CENTER FOR THE PERFORMING ARTS—Just outside downtown Philadelphia, during the summer this open-air theater hosts world-class performers

of all genres. Often a venue for the Philadelphia Orchestra, as well as a multitude of legends and pop stars, the Mann is the perfect place to pack a picnic and enjoy an evening show. This month: Kingdom Hearts Orchestra, **Aug. 2;** Jason Mraz and Brett Dennen, **Aug. 11;** Gladys Knight and the O’Jays, **Aug. 12;** Cake and Ben Folds, **Aug. 16;** Smokey Robinson, **Aug. 25;** Steve Martin and Martin Short, **Aug. 30.** www.manncenter.org. 5201 Parkside Ave., 215.878.0400. **Map 1, A3**

THEATRE OF THE LIVING ARTS (TLA)—This former movie house is now a two-story music venue featuring popular touring bands and a funky boho vibe. This month: From Hallelujah to the Last Goodbye: Strangelove, **Aug. 3;** Box of Rain, **Aug. 4;** Us The Duo, **Aug. 5;** Martha Graham Cracker, **Aug. 18;** Warren G, **Aug. 19;** Donovan Frankenreiter, **Aug. 24.** www.inphilly.com. 334 South St., 215.922.1011. **Map 1, K7**

TOWER THEATRE—Located just outside of the city in Upper Darby, Pennsylvania, this spacious theater features exciting performances by some of the biggest acts from across the globe. Take the Market-Frankford Line to 69th Street station for access. Ticket prices and show times vary. This month: American Idol Live, **Aug. 14.** www.venue.thetowerphilly.com. 69th and Ludlow streets, Upper Darby, Pa., 610.352.2887.

UNION TRANSFER—Originally built as a luggage terminal in the early 1900s, this mid-size music hall now boasts towering arches, elegant chandeliers and stained glass for a dramatic yet intimate atmosphere. Separate bar area for the 21-plus crowd. This month: Rex Orange County, **Aug. 2;** Jeremih, **Aug. 10;** Pedro The Lion, **Aug. 11;** Mura Masa, **Aug. 18;** Interpol, **Aug. 23;** Espers, **Aug. 24.** www.utphilly.com. 1026 Spring Garden St., 215.232.2100. **Map 1, I2**

WELLS FARGO CENTER—The biggest names in music stop at this stadium arena and sports complex in South Philadelphia. Get there by car or take SEPTA’s Broad Street subway line to AT&T Station. This month: Radiohead, **Aug. 1;** Nick Cannon, **Aug. 23;** Jeff Lynne’s ELO, **Aug. 24.** www.wellsfargocenterphilly.com. 3601 S. Broad St., 215.336.3600 215.336.3600. **Map 4, D4**

Gay & Lesbian Clubs

KNOCK RESTAURANT AND BAR—Known for its friendly scene and inspired cuisine, Knock draws a sophisticated gay clientele of all ages. Daily happy hour is 5 pm-7 pm. Daily 11 am-2 am. www.knockphilly.com. 225 S. 12th St., 215.925.1166. **Map 1, I6**

THE BIKE STOP—This longtime club offers four levels with different themes, like the Short Stop for sports fans with games on TV and the Pit Stop for leather fans. Other floors host dancing and cruising. M-Sa 4 pm-2 am, Su 2 pm-2 am. www.thebikestop.com. 206 S. Quince St., 215.627.1662. **Map 1, I6**

U BAR—With its large oval bar and mirrored walls, this Gayborhood institution regularly draws a lively crowd. Relax with a no-frills brew and some juke box tunes. Daily 11 am-2 am. www.ubarphilly.com. 1220 Locust St., 215.546.6660. **Map 1, I6**

Gentlemen’s Club

DELILAH’S—“America’s #1 Gentlemen’s Club” features “The World’s Most Beautiful Showgirls.” Find a complimentary after-work buffet, happy-hour specials and free cover with hotel room key

or game-day ticket stub. Free parking. M-Sa 11:30 am-2 am, Su 1 pm-2 am. www.delilahs.com. 100 Spring Garden St., 215.625.2800. **Map 1, L2**

Live Music Clubs

BOARDWALK HALL—Formerly Atlantic City Convention Hall, this venue seats more than 14,000 people. With its vaulted 137-foot high ceilings and stunning architecture, this venue plays host to music icons such as The Rolling Stones, Bruce Springsteen and Madonna. This month: Rod Stewart with special guest Cyndi Lauper, **Aug. 4;** Kidz Bop Live 2018, **Aug. 11.** www.boardwalkhall.com. 2301 Boardwalk, Atlantic City, NJ, 609.348.7000.

CHRIS’ JAZZ CAFE—Live jazz featuring great local and big-name talent, plus a full dinner menu. Check website for full schedule of events. M-F 11 am-2 am, Sa 6 pm-2 am. This Month: Odean Pope, **Aug. 4;** Sam Greenfield, **Aug. 10;** Ken Fowser, **Aug. 11;** The Philadelphia Ambassadors Big Band, **Aug. 17;** Jump City Jazz Orchestra, **Aug. 18;** Lucy Yeghiazaryan, **Aug. 25.** www.chrisjazzcafe.com. 1421 Sansom St., 215.568.3131. **Map 1, H5**

JOHNNY BRENDA’S—Catch locally and nationally renowned indie rock acts almost every night at this hipster hangout in the up-and-coming Fishtown neighborhood. The venue is upstairs from a tavern that features upscale pub grub. This month: Darklands with DJs Bunch and mike Cammarata, **Aug. 1;** Yung Bae, **Aug. 3;** The Essex Green, **Aug. 6;** Many Rooms Angelo de Aug.ine, **Aug. 8;** Mesmeric Haze, **Aug. 9;** Drugdealer, **Aug. 10;** Echo Courts, **Aug. 11;** Sporta, **Aug. 13;** Bardo Pond, **Aug. 19;** The Asteroid No. 4, **Aug. 24;** Linker E Os, **Aug. 28;** Delta Sleep, **Aug. 30.** www.johnnybrendas.com. 1201 N. Frankford Ave., 215.739.9684. **Map 1, L1**

TIME—This groovy three-in-one venue features a chandeliered lounge with live jazz, a cozy whiskey bar and a second-floor dance club reminiscent of absinthe-fueled hangouts of old Paris. “Trombo Piccolo with Chris Farrell & Co,” every Monday; open mic on Tuesdays; and “Midtown Jazz Jam with the Tim Brey Trio,” every Sunday. Daily 5 pm-2 am. www.timerestaurant.net. 1315 Sansom St., 215.985.4800. **Map 1, H5**

WARMDADDY’S—This South Philly blues and jazz club offers a casual, relaxed atmosphere, live entertainment nightly and classic southern cuisine. Tu-Th 5 pm-11 pm, F till midnight, Sa 1 pm-midnight, Su 10:30 am-3 pm and 4-11 pm. www.warmdaddys.com. 1400 S. Columbus Blvd., 215.462.2000. **Map 3, G2**

Nightclubs

BLEU MARTINI—Specializing in more than 30 different martinis, this swanky bar is located in the heart of Old City’s bustling nightlife strip. Daily 4 pm-2 am. www.bleumartiniphilly.com. 24 S. Second St., 215.940.7900. **Map 1, K5**

VANGO—This hip nightclub is where Philly’s young and stylish set get their fix of pulsing dance music and cool cocktails. Enjoy a drink at the skybar upstairs, where club-goers gather on warm summer evenings for drinks and conversation. Daily 5 pm-2 am. www.vangoloungeandskybar.com. 116 S. 18th St., 215.568.1020. **Map 1, G5**

ZEE BAR—A spacious-yet-intimate members-only club that takes the concept into a stratosphere of unprecedented luxury. Members enjoy extended hours, VIP spaces, bottle service and more. W-Sa,

10 pm-3 am. www.zee-bar.com. 100 Spring Garden St., 215.922.2994. **Map 1, L2**

Recreation

SAILTIME—This sailing outfit has a fleet of beautiful vessels for any aspiring or even seasoned sailors. Membership lets you take to the high seas—or at least the Delaware River—regularly, but classes can also be had for those wanting a lighter commitment. Date-night alert: Overnight excursions are also available, as are day sails and sunset cruises on chartered boats. Times/prices vary; check website for details. www.sailtime.com/philadelphia. Penn’s Landing Marina, 301 S. Christopher Columbus Blvd., 866.SAIL101. **Map 1, L6**

Sports

ARENA FOOTBALL: SOUL HOME GAMES—With multiple division, conference and world championships, the winningest Arena Football League team tackles rivals at Wells Fargo Center. www.philadelphiasoul.com. Wells Fargo Center, 3601 S. Broad St., 215.253.4900. **Map 1, H8**

BASEBALL: PHILADELPHIA PHILLIES HOME GAMES—Catch the fightin’ Phils at Citizens Bank Park, a ballpark that combines modern amenities with old-fashioned charm. Miami Marlins, **Aug. 2-5;** Boston Red Sox, **Aug. 14-15;** New York Mets, **Aug. 16-19;** Washington Nationals, **Aug. 27-29;** Chicago Cubs, **Aug. 31.** www.phil

lies.com. Citizens Bank Park, One Citizens Bank Way, 215.463.1000. **Map 1, H8**

Sports Bars

FIELD HOUSE SPORTS BAR—Located inside the Pennsylvania Convention Center, this upscale sports bar is a great place to watch the game on more than 35 high-definition TVs or listen to live music while dining from the contemporary American menu. Su-Th 11:30 am-11:30 pm, F-Sa 11:30 am-2 am. www.fieldhousephilly.com. 1150 Filbert St., 215.629.1520 215.629.1520. **Map 1, I5**

FOUNDING FATHERS SPORTS BAR AND GRILL—This upscale sports bar located on the Graduate Hospital area’s northern edge features a wide array of daily specials and late night offerings, as well as 20 draft lines and an even greater bottle selection. M-F 4 pm-2 am, Sa-Su 11:30 am-2 am. www.foundingfathersbar.com. 1612 South St., 267.519.0253. **Map 1, I7**

FOX AND HOUND BAR + GRILL—Located a block away from the Avenue of the Arts, this spacious, lively bar and restaurant features large-screen televisions, billiard tables and a full menu and bar with great beer specials. Daily 11 am-2 am. www.foxandhound.com. 1501 Spruce St., 215.732.8610. **Map 1, H6**

O’NEALS—This family-owned Irish pub, located just off South Street, features high-definition televisions, free Wi-Fi and the best in Belgian, European and American beer choices, as well as rare Irish



whiskeys and scotches. Call for hours. www.onealspub.com. 611 S. Third St., 215.574.9495. **Map 1, K7**

XFINITY LIVE!—Just a few feet from the stadiums where Philly’s sports teams play is XFINITY Live!, a huge indoor and outdoor venue with six different bars, a variety of food options and live entertainment all under one roof. Head here before and after the games to enjoy a spirited pre- or post-game drink. Don’t have tickets? Scope out a seat near the multiple big-screen TVs to watch the game live. Hours vary by location. www.xfinitylive.com. 1100 Pattison Ave., 267.534.4264.

Theater

BRISTOL RIVERSIDE THEATRE—Founded in 1984, Bristol Riverside Theatre is a state-of-the-art, riverfront theater in the Philadelphia countryside of Bucks County. This month: Broadway Summer Spectacular, **Aug. 9-19;** Disney’s “Beauty and The Beast” Junior, **Aug. 17-18.** www.brtsstage.org. 120 Radcliffe St., Bristol, Pa., 215.785.0100.

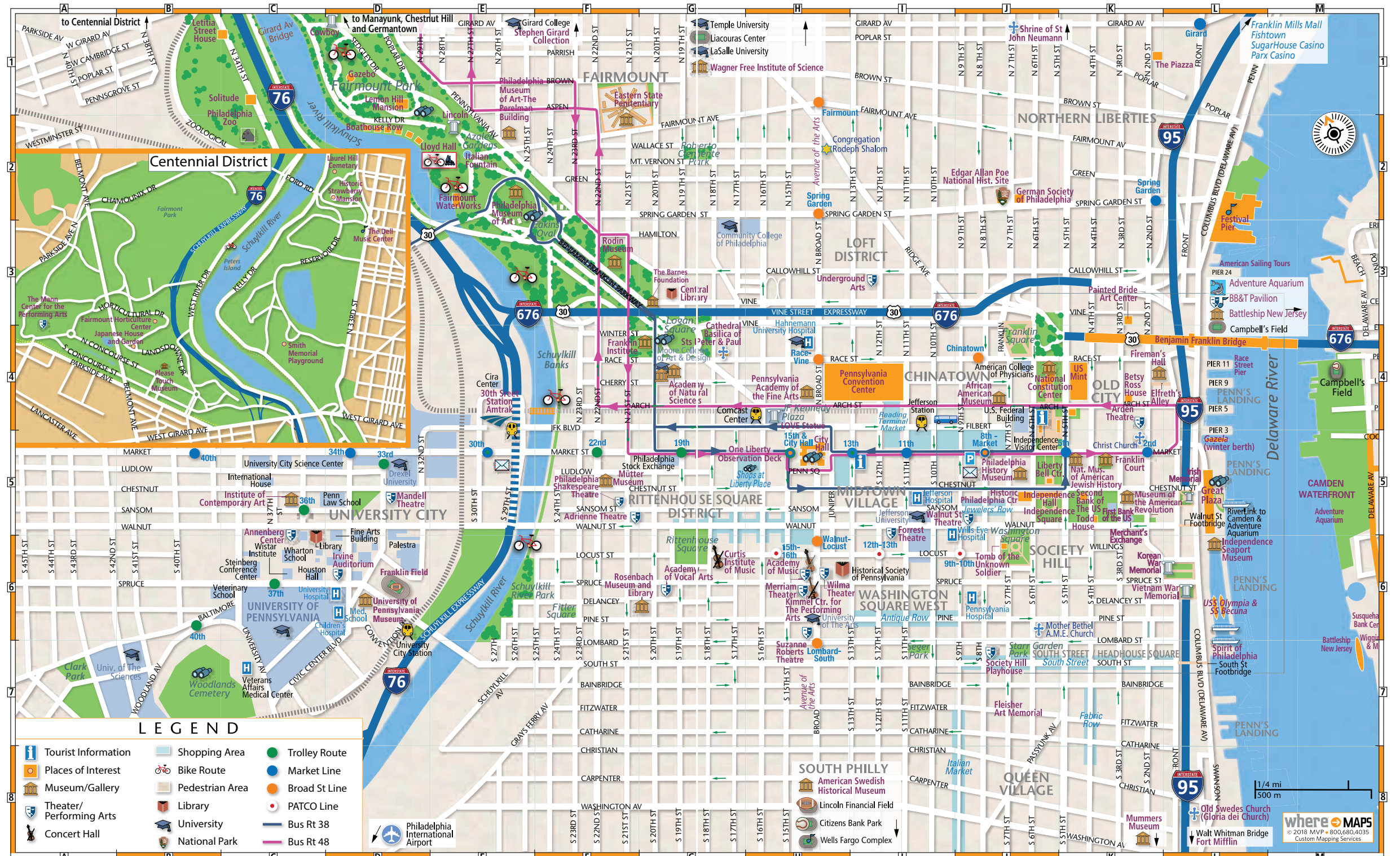
PEOPLE’S LIGHT THEATRE—Just outside Philly, People’s Light is a professional theater producing diverse, thought-provoking and critically acclaimed works. This month: Woody Sez: The Life and Music of Woody Guthrie, **Aug. 1-26.** www.peopleslight.org. 39 Conestoga Road, Malvern, Pa., 610.644.3500.

COORS LIGHT & COORS BANQUET SPECIALS DURING HOME GAMES
COMPLIMENTARY BUFFET 7 DAYS A WEEK FROM 5-7PM
FREE ADMISSION WITH HOTEL KEY OR AFTER HOME GAMES (WITH PROOF OF ATTENDANCE)
DELILAH'S THE GENTLEMEN'S CLUB & STEAKHOUSE
100 SPRING GARDEN STREET • PHILADELPHIA, PA • 215.625.2800
FREE PARKING • FULL MENU/LATE NIGHT DINING • WWW.DELILAH'S.COM



MAP 1 PHILADELPHIA DOWNTOWN WEST

PHILADELPHIA DOWNTOWN EAST

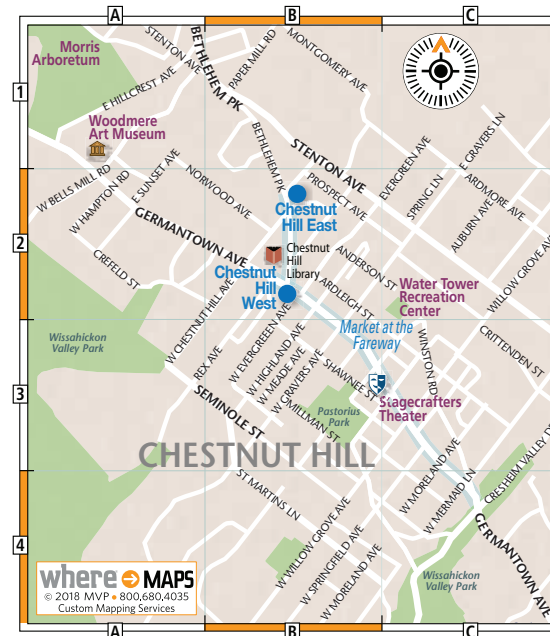




MAP 2 PHILADELPHIA HISTORIC AREA



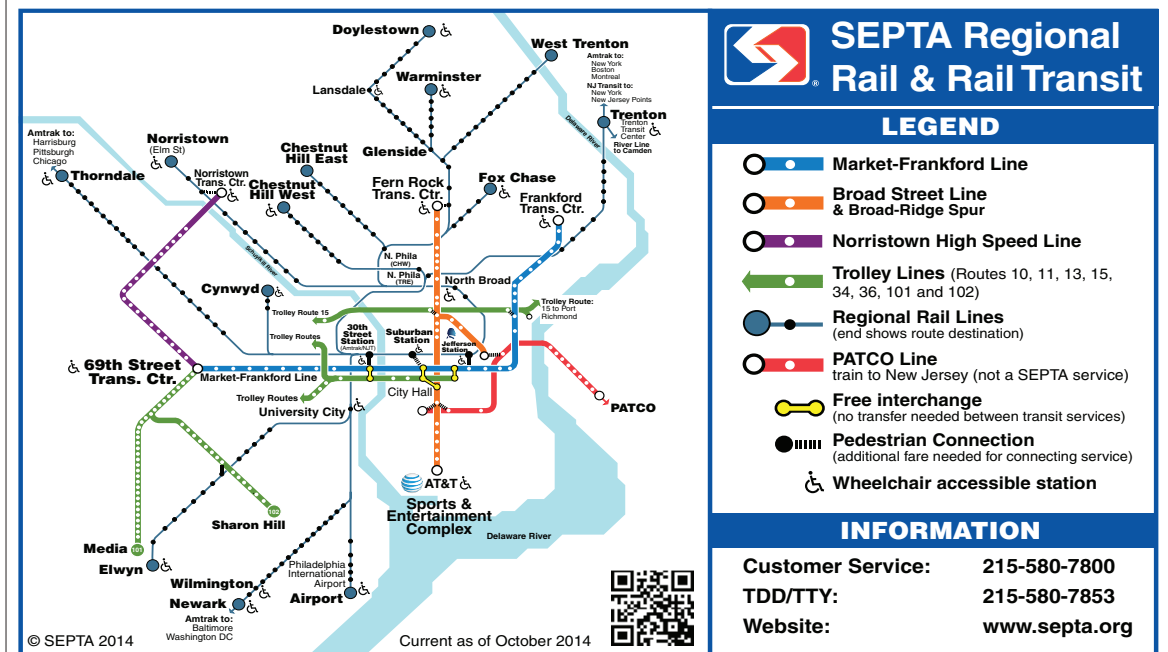
MAP 3 PHILADELPHIA CHESTNUT HILL



MAP 4 PHILADELPHIA METRO MAP

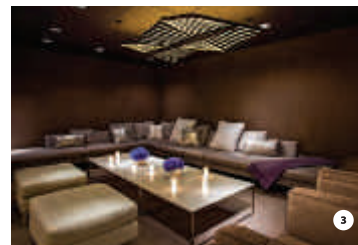


MAP 5 PHILADELPHIA SEPTA



[WHERE INSIDE] Philadelphia Your Way

UNIQUE TRAVEL RECOMMENDATIONS, FIT TO MATCH YOUR PERSONAL STYLE.
FIND THE CITY CURATED FOR YOU AT WHERETRAVELER.COM/PHILADELPHIA



Budget-Friendly

The best things in life are priceless, and so is being a savvy traveler. Luckily in Philly, it's easy to enjoy the city without emptying your wallet. Movie buffs can literally follow in the footsteps of an iconic character for free by running up the **(1) Rocky Steps**. Even if you choose to walk up, the view at the top makes everyone feel like a champ. Discover what they didn't teach you in chemistry class at the **(2) The Science History Institute**. This free site lets the curious explore with exhibits that combine science and the world around us. In addition to watching their dollars, the money-conscious can also learn about American currency at the **(3) U.S. Mint**, where self-guided tours reveal the money-making process from the first coining press to modern-day operations—all gratis.

Family

We know zoos are nothing new. But in addition to being America's first menagerie, the **(1) Philadelphia Zoo** should top any list if only for its above-ground netted pathways, through which tigers, orangutans and other animals freely roam the campus. If you have time to visit only one attraction, take your family to the **(2) Please Touch Museum**. This hands-on site encourages children to do everything from race a sailboat to jump down a rabbit hole into Wonderland. And true to its name, everything here encourages a tactile approach. Interaction is also a key theme at **(3) The Franklin Institute**. With so much fun, young ones won't realize they're learning as they walk through a giant heart, explore outer space and experience a train factory all under one roof.

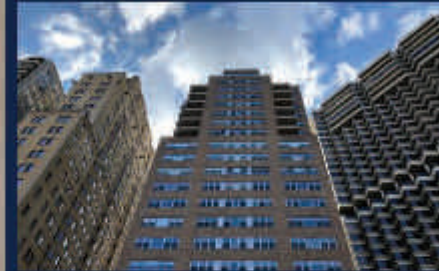
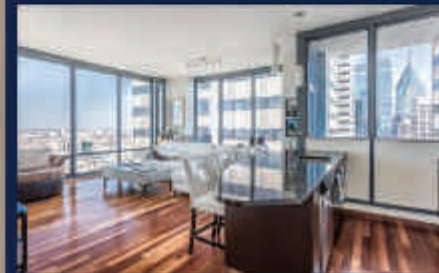
Zen Seeker

Bookworms who find solace among shelves stacked with knowledge will feel right at home at **(1) The Athenaeum of Philadelphia**. Founded in 1814 to collect common materials, the site now stores tomes, architectural drawings, photographs and historic objects that attract architects, interior designers and museum curators. Feel more relaxed outdoors? **(2) Bartram's Garden** is a 45-acre National Historic Landmark that's ideal for soaking in nature's splendor. Stroll the gardens, paddle a kayak along the river or explore the surrounding historic buildings. Added bonus: the gardens feature a great view of the city skyline. Those looking for a little pampering with their relaxation bliss out at an oasis like **(3) Rescue Spa**, where a wide range of treatments help you tackle a new day.

(FROM TOP TO BOTTOM, LEFT TO RIGHT) G. WIDMAN/VISIT PHILADELPHIA®; ©MICHAEL GRAY/FICKR, CREATIVE COMMONS; J. FUSCO/VISIT PHILADELPHIA®; M. EDLOW/VISIT PHILADELPHIA®; R. KENNEDY/VISIT PHILADELPHIA®; JUSTIN O./FLICKR, CREATIVE COMMONS; ©ESTHER WESTERVELD/FICKR, CREATIVE COMMONS; COURTESY RESCUE SPA



Philadelphia, where modern luxury meets historic elegance. As top real estate agent at Kurfiss Sotheby's International Realty in Philadelphia, let me show you what it's like to live in and around this iconic city.



JASON KRAVITZ

c.267.324.4141 | RealtorJK@gmail.com
o.215.735.2225 | www.RealtorJK.com
1631 Locust Street, Suite 300
Philadelphia, PA 19103



Kurfiss

Sotheby's
INTERNATIONAL REALTY

Each office is independently owned & operated