

SIGHTSEEING TOURS OF PHILADELPHIA

Frequent departures from 5th & Market Streets (N.E. Corner)

Philadelphia
TROLLEY WORKS
and
76 CARRIAGE
COMPANY



Trolley Tours

- 1 Day, 2 Day or 3 Day pass
- 27 Stops
- 90+ Min. Daily Tours



Carriage Tours
Private Coaches
Daytime Tours
Evening Rides

BIG BUS
• PHILADELPHIA •

The double-decker bus tours provide amazing views of the City!

- Hop on Hop Off
- 1 Day, 2 Day or 3 Day pass
- 27 Stops

Call for a FREE shuttle pick up from Airport and Center City hotels

Now available in foreign languages



TICKETS SOLD AT 5TH & MARKET, ALL VEHICLES AND PHILLYTOUR.COM

Certificate of Excellence
2016 WINNER

Check out our Specialty Tours

Philly by Night

8pm Departures from 12th and Filbert Streets

215-389-TOUR (8687) | phillytour.com

FRANKLIN'S FOOTSTEPS WALKING TOURS



Amish Country
Private City Tours
Ghost Tours
Combo Tours
and More!

Certain Tours are operated seasonally

Philadelphia where

wheretraveler.com

SWEPT AWAY

By holiday displays, family feasts & more delights of the season

INSIDE

THE EVOLUTION OF THE (NOT SO) HUMBLE PHILLY DOUGHNUT

GIFTS FROM 'THE CITY OF BROTHERLY LOVE'



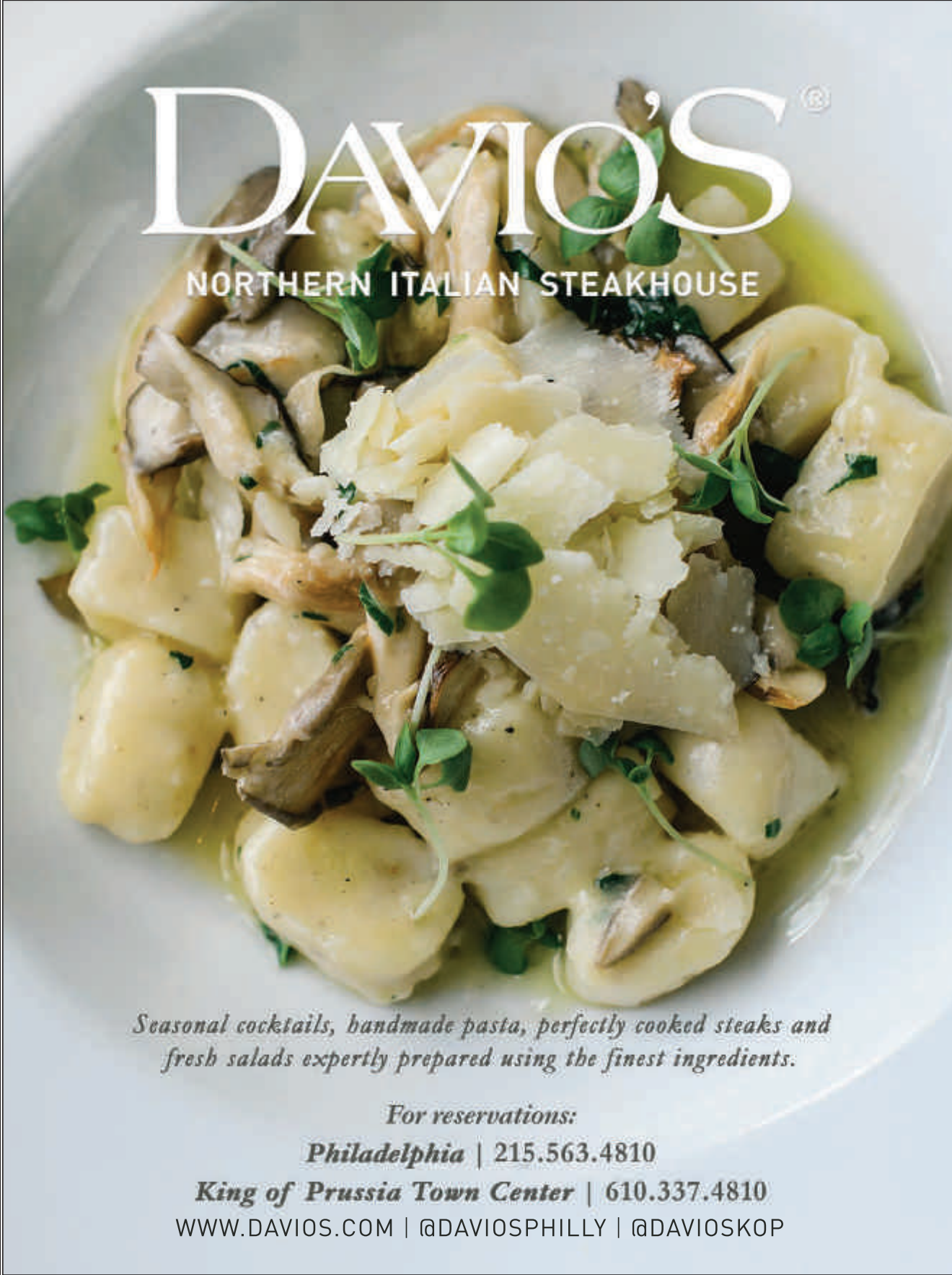
Christmas Village in Philadelphia returns to Love Park, from Thanksgiving to Christmas Eve



LAGOS

MY LAGOS MY WAY

CAVIAR GOLD COLLECTIONS
RITTENHOUSE SQUARE | 215.567.0770 | LAGOS.COM



DAVIO'S®

NORTHERN ITALIAN STEAKHOUSE

Seasonal cocktails, handmade pasta, perfectly cooked steaks and fresh salads expertly prepared using the finest ingredients.

For reservations:

Philadelphia | 215.563.4810

King of Prussia Town Center | 610.337.4810

WWW.DAVIOS.COM | @DAVIOSPHILLY | @DAVIOSKOP

CONTENTS

SEE MORE OF PHILADELPHIA AT WHERETRAVELER.COM

the plan

05 Editor's Itinerary

The essential things to see and do in Philadelphia, including a 90-minute visit to green oasis, Longwood Gardens

06 Where Calendar

Hot Dates This Month

Top things to do in December.



COVER

PROMOTION

Christmas Village will again transform Love Park into a traditional German Christmas Market with twinkling lights, music, mulled wine, European food and 80+ vendors between November 23–December 24. Photo by Russ Brown Photography.



CONNECT WITH US



READ US ON MAGZTER



Oyster House

where now

10 Philly Swag

Need last-minute holiday gifts? Look to these Philadelphia-themed presents. BY AMY GORDON

12 Celebrating the Season's Bounty

Area restaurants do as the Italians do, with the Feast of the Seven Fish. BY ADAM ERACE

13 Going Nuts for Doughnuts

Track the history of the city's love affair with this fried treat. BY ADAM ERACE

the guide

14 SHOPPING

Top spots to shop, from department stores to independent boutiques

22 GALLERIES & ANTIQUES

Paintings, photography, sculptures, antiques, plus exhibitions to see now

24 MUSEUMS & ATTRACTIONS

Must-see sites including science museums, historic places and observatories

29 DINING

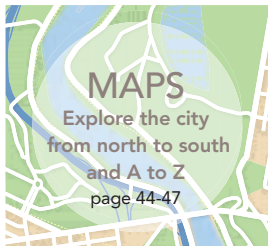
Tasty Philly restaurants, from fine dining to fast casual, in 16 neighborhoods

35 NAVIGATE

Guidance for finding your way around Philadelphia: information centers, tours and transportation

38 ENTERTAINMENT

Fun bars, hip lounges, world-class theater and many more ways to enjoy the arts



(FROM LEFT) ©JAMES VARNEY/OYSTER HOUSE; ©J. FUSCO/VISIT PHILADELPHIA*

ONE LIBERTY
OBSERVATION
DECK

PHILLY FROM THE TOP

BEST VIEWS IN PHILLY.

Honestly.

Open Daily: Morning, Noon & Night | PhillyFromTheTop.com

One Block West of City Hall

Enter off Market Street courtyard.

2017
TRIPADVISOR
AWARDS
OF
EXCELLENCE

tripadvisor

EASTERN STATE PENITENTIARY

Save \$2

Use code WHERE17 at
www.EasternState.org

Explore America's Most Historic Prison

A haunting world of crumbling cellblocks and empty guard towers



Tours include the cellblocks, Al Capone's Cell, artist installations,
and an audio tour narrated by actor Steve Buscemi.

Open Every Day 10 am to 5 pm • (215) 236-3300 • www.EasternState.org

2027 Fairmount Avenue, Philadelphia, PA • Just five blocks from the Philadelphia Museum of Art

YOUR TRAVELING COMPANION SINCE 1936®

where®
PHILADELPHIA

Member of the **M** Morris Media Network

PUBLISHER **Rick Kestenbaum**
EDITOR **Anne Kim-Dannibale**

ADVERTISING & CIRCULATION
ASSOCIATE PUBLISHER **Brenda Mendte**
COMMUNITY RELATIONS MANAGER **Zach Santo**

EDITORIAL & DESIGN
REGIONAL EDITORIAL DIRECTOR **Leigh Harrington**
ART DIRECTOR **Dusty Martin**
CONTRIBUTING WRITERS **Adam Erace, Amy Gordon**

MORRIS VISITOR PUBLICATIONS

MVP | EXECUTIVE
PRESIDENT **Donna W. Kessler**
CHIEF FINANCIAL OFFICER **Dennis Kelly**
VICE PRESIDENT OF AUDIENCE **Kurt Caywood**
VICE PRESIDENT OF OPERATIONS **Angela E. Allen**
VICE PRESIDENT, INTERNAL BUSINESS DEVELOPMENT
Karen Rodriguez
REGIONAL VICE PRESIDENT OF SALES
Kristen Standish
DIRECTOR OF CIRCULATION **Scott Ferguson**
NATIONAL MARKETING MANAGER **Melissa Blanco**

MVP | CREATIVE
CHIEF CREATIVE OFFICER **Haines Wilkerson**
SENIOR EDITORIAL DIRECTOR **Margaret Martin**
DESIGN DIRECTOR **Jane Frey**
DIRECTOR OF PHOTOGRAPHY **Isaac Arjonilla**
CREATIVE COORDINATOR **Beverly Mandelblatt**

MVP | NATIONAL SALES
VICE PRESIDENT, INTEGRATED/DIGITAL SALES
Rebekah Valberg
VICE PRESIDENT, NATIONAL MARKETING
Adeline Tafuri Jurecka
SENIOR DIRECTOR OF DIGITAL OPERATIONS
Bridget Duffie, 706.821.6663
DIRECTOR OF NATIONAL SALES **Liza Meneades**
NATIONAL SALES MANAGER **David Gately**

MVP | PUBLICATION SERVICES
PUBLICATION SERVICES DIRECTOR **Kris Miller**
PUBLICATION SERVICES MANAGER **Cher Wheeler**
DIGITAL IMAGING **Erik Lewis**

MVP | MANUFACTURING & TECHNOLOGY
DIRECTOR OF MANUFACTURING **Donald Horton**
TECHNICAL OPERATIONS MANAGER
Tony Thorne-Booth

E-mails for all of the above except contributors:
firstname.lastname@morris.com

MVP

Morris Visitor Publications

MVP | PHILADELPHIA
1845 Walnut St., Suite 980, Philadelphia, PA 19103
215.893.5100, 215.893.5105 (fax)

MORRIS COMMUNICATIONS
CHAIRMAN **William S. Morris III**
PRESIDENT & CEO **William S. Morris IV**
CHIEF OPERATING OFFICER **Derek J. May**

wheretraveler.com

Where® magazine is produced by Morris Visitor Publications (MVP), a division of Morris Communications Co., LLC, 725 Broad St., Augusta, GA 30901, morrismedianetwork.com. Where magazine and the where® logo are registered trademarks of Morris Visitor Publications. Where makes every effort to ensure the accuracy of the information it publishes, but cannot be held responsible for any consequences arising from errors or omissions. All rights reserved. Reproduction in whole or in part strictly prohibited.



PHILLY
LOVES A
WINNER

**SUGAR
HOUSE**
CASINO

EXPANDED GAMING FLOOR | EVENT CENTER | HUGO'S FROG BAR & CHOP HOUSE | MIAN
GENO'S STEAKS | TACCONELLI'S | REVOLUTION GRILL | SAXBYS | STADIUM GAMING
FREE PARKING GARAGE | STAR-STUDED ENTERTAINMENT | AND MORE
FREE SELF-PARKING ON N. DELAWARE AVE. 1 MILE NORTH OF THE BEN FRANKLIN BRIDGE
@ SUGARHOUSECASINO.COM

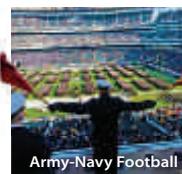
GAMBLING PROBLEM? CALL 1-800-GAMBLER.



HOT DATES

ALL MONTH: Made in Philadelphia Holiday Market

Located just outside City Hall, Dilworth Park comes alive with the spirit of the season thanks to this annual bazaar. The festive open-air pop-up brings together more than 40 local artisans and crafters offering unique, handmade gifts from jewelry to art, clothing, accessories and even gourmet foods and chocolates. Free admission. Su-Th 11 am–7 pm; F-Sa till 8 pm; Dec. 24 till 5 pm. Dilworth Park, 15th and Market sts, madeinphila.com/holiday-market/—Amy Gordon



Army-Navy Football



Latkepalooza

6 Great Things Not to Be Missed

1 BLUECROSS RIVERRINK WINTERFEST > ALL MONTH

This winter pop-up brings an Olympic-sized ice skating rink, fire pits, skates with Santa, story time with local authors and classic films. Market St. and Columbus Blvd., 215.925.RINK, delawariverwaterfront.com/places/blue-cross-riverrink-winterfest

2 A VERY PHILLY CHRISTMAS > ALL MONTH

Five of Fairmount Park's treasured historic houses don their holiday best. \$8 per house; children free. Fairmount Park, holidaysinthepark.com

3 CHESTNUT STAG & DOE NIGHTS > DEC. 6, 13, 20, 27

One of Philly's most picturesque neighborhoods offers seasonal refreshments, live

entertainment and appearances by Santa and his crew. Chestnut Hill, chestnuthillpa.com

4 ARMY-NAVY FOOTBALL GAME > DEC. 9

The Army Black Knights battle the Navy Midshipmen in this classic gridiron battle, now in its 118th year. Kickoff, 3 pm. 1 Lincoln Financial Field Way, 215.794-4000, armynavygame.com

5 LATKEPALOOZA > DEC. 10

Just in time for Chanukah, tasty potato pancakes from some of Philly's most popular restaurants (ex. Sabrina's Café, Honey's Sit 'N Eat and Mission Taqueria). \$20. The Gershman Y, 401 S. Broad St., 215.545.4500, gershmany.org

6 "THE COLOR PURPLE" > DEC. 12-17

The 2016 Tony Award winner for Best Musical Revival about a woman in rural Georgia who finds her strength and voice against all odds takes the stage. Prices vary. Forrest Theatre, 1114 Walnut St., 215.893.1999, kimmelcenter.org

TOP SPOTS

This month, celebrate the season without breaking the bank at these free events.

COMCAST HOLIDAY SPECTACULAR

The mesmerizing Comcast Experience video wall, one of the world's largest LED displays, glows with a 15-minute show of festive music like "Jingle Bell Rock" and recorded performances of "The Nutcracker" by the Pennsylvania Ballet. 10 am–8 pm at the top of each hour. Comcast Center, 1701 JFK Blvd., themarketandshopsatcomcastcenter.com

MACY'S PHILADELPHIA CHRISTMAS LIGHT SHOW

Housed in the historic Wanamaker Building, Macy's Philadelphia is a holiday haven with a light show, elaborate window displays and the 6,000-square-foot Dickens Village, which uses animated figures to recreate memorable scenes from "A Christmas Carol." 1300 Market St., 215.241.9000, visitmacysusa.com/philadelphia

FRANKLIN SQUARE'S ELECTRICAL SPECTACLE HOLIDAY LIGHT SHOW

More than 50,000 lights sparkle and "dance" to a holiday soundtrack by The Philly Pops. Su-Th 4:30 pm–8 pm on the half hour; Sa-Su till 9 pm. Kimmel Center, Verizon Hall, 300 S. Broad St., 215.893.1999, phillypops.org

NEWS TO TRAVEL BY

Essential Philadelphia

This town is best known for its history and endearing grit. But, it's also a major patron of science and the arts. If you have only limited time to make the most of this exciting metropolis, we can show you how to make the most of it. This month, venture a little outside of the city's center, for a refreshing dose of nature.

90 MINUTES IN:

Longwood Gardens

This sprawling space had its beginnings in 1700, when a Quaker named George Peirce purchased 402 acres from city founder William Penn's commissioners. But it wasn't until 1907 that Longwood really got going. Under new owner Pierre du Pont—a devoted gardener—Longwood grew into a showpiece. Visitors today walk among more than 11,000 plant types in impeccably maintained grounds. Meander through the indoor Garden Path, where yellow alders and fuchsia-colored Brazilian plumes flourish. In Peirce's Woods, fall colors fill the 7-acre outdoor oasis. This month, hundreds of chrysanthemums trained into giant orbs and spirals take center stage, while weekend evenings display a spectacular show of lights, music and dancing fountains.

Get going! Explore the city at wheretraveler.com.

where® in the world

Where is an international network of magazines first published in 1936 and distributed in over 4,000 leading hotels in more than 50 places around the world. Look for us when you visit any of the following cities, or plan ahead for your next trip by visiting us online at wheretraveler.com. **UNITED STATES** Alaska, Atlanta, Baltimore, Boston, Charleston, Charlotte, Chicago, Dallas, Indianapolis, Jacksonville/St. Decembrine/Amelia Island, Las Vegas, Los Angeles, Madrid, Maui, Miami, Minneapolis/St. Paul, New Orleans, New York, Oahu, Orange County (CA), Orlando, Philadelphia, Phoenix/Scottsdale, San Diego, San Francisco, Seattle, St. Louis, Tampa, Tucson, Washington, D.C. **ASIA** Hong Kong, Macau, Singapore **AUSTRALIA** Brisbane, Melbourne, Sydney **CANADA** Calgary, Canadian Rockies, Edmonton, Halifax, Muskoka/Parry Sound, Ottawa, Toronto, Vancouver, Victoria, Whistler, Winnipeg **EUROPE** Berlin, Budapest, Istanbul, London, Madrid, Milan, Moscow, Paris, Rome, St. Petersburg

SEPTA AIRPORT LINE

TRAIN - THEN - PLANE

ONE WAY
\$6.75*

**25 MINUTES FROM
CENTER CITY PHILADELPHIA TO
PHILADELPHIA INTERNATIONAL AIRPORT**

**RUNS EVERY 30 MINUTES
FROM 5AM - MIDNIGHT**

ISEPTAPHILLY.COM

*WHEN FARE IS PURCHASED IN ADVANCE

More Xcitement
Coming Soon to
Pennsylvania's #1 Casino!



America's First Pizzeria



Farm-to-Fork & Rotisserie Bar

— The all new —
Poker Room

East Coast's Best Room

parx
casino

Get lucky in no time.®

A brand new \$50 million expansion opening soon!

Experience even more fun and excitement
with two new restaurants,
an all new state-of-the-art Poker Room
and a 1,500 seat live entertainment venue!

parxcasino.com

Street Road Exit off I-95 or PATurnpike

GAMBLING PROBLEM? CALL 1.800.GAMBLER



How to Eat Like a Local

PRESENTED BY PAT'S KING OF STEAKS

● No visit to Philadelphia would be complete without a visit to the birthplace of the cheese steak sandwich, Pat's King of Steaks®. Sure, there are lots of places in Philly to get a cheesesteak, but only Pat's gives you the authentic experience that locals have lined up for since 1930.

1237 E. PASSYUNK AVENUE (AT 9TH & WHARTON)
PATSKINGOFSTEAKS.COM • #ORIGINATOR

where **now**

→ Philadelphia

The savvy traveler's guide to the City of Brotherly Love

GIFTS TO GIVE

Philly Swag

Looking for crowd-pleasing holiday gifts? Philly's boutiques, markets and gift shops are stocked with wares that celebrate the city and are sure to delight everyone on your list. By Amy Gordon

www.wheretraveler.com



1

◀ MARCIE BLAINE CHOCOLATES

A window at the back of Verde gift store offers a glimpse into this company's chocolate-making process with the finished treats sold at the retail counter. The "Philly Series" includes themed pieces like Love Park (raspberry ganache), Liberty Bell (cacao and vanilla bean), Soft Pretzel (peanut butter and pretzel ganache) and Philly Skyline (hazelnut, milk chocolate and praline).

\$17.95-\$49.95, Verde, 108 S. 13th St., 215.546.8700



2

READING TERMINAL MARKET

Stuff your stockings with exclusive branded merchandise from this famous indoor marketplace.

Baseball cap, call for price, 51 N. 12th St., 215.922.2317



3

▲ YARDS BREWING CO.

This hometown brewer offers pints and souvenirs like T-shirts, sweatshirts and glasses emblazoned with the beer maker's logo.

Men's IPA Tee, \$20, 901 N. Delaware Ave., 215.634.2600



4

▲ MUSEUM OF THE AMERICAN REVOLUTION

While you're exploring the city, stop into world-class museums for uniquely Philly items like Founding Father bobble heads, vintage postcard calendars and accessories.

Satin Delaware scarf, \$99.99, 101 S. 3rd St., 877.740.1776

5

◀ CRAFTY BALBOA

'Tis the season for pop-up markets like Crafty Balboa (Dec. 9), where shoppers score handmade gifts by local artisans.

Art from The Golden Hen, prices vary, BOK, 1901 S. 9th St.

COURTESY OF EACH COMPANY; (FACING PAGE) ©BSTAUC/ISTOCK

DINING DISH

Celebrating the Season's Bounty



The Olde Bar

ONE FISH, TWO FISH ... SEVEN FISH

For years, **Paradiso** chef Lynn Rinaldi's grandmother cooked the "Feast of the Seven Fish," the Italian-American Christmas Eve tradition involving a septet of sea creatures that's sacrosanct in South Philly. "It was something all of us looked forward to," Rinaldi says. Naturally, the copper-haired chef brought the family tradition to her restaurant. "It was supposed to be 12 people, but it wound up being 30-something," she remembers. "Meanwhile, all that day, people were coming in to buy gift cards. I got stuck behind the bar for four hours." Fortunately, the meal went off without a hitch, and since then, Paradiso's Christmas Eve special has become legend. This year, \$75 gets diners hooked on a menu that starts with baccala montecato and fritto misto, followed by pasta and an entrée (including crab-stuffed skate and seared swordfish with fennel and blood orange). Family-style sides of broccoli rabe and sautéed string beans and potatoes get passed around long tables, while dessert brings trays stacked with cookies recreated from handwritten recipe cards. "It's really special to us," Rinaldi says. "We put our heart into it."—*Adam Erace*

More Seafood Hot Spots

It's safe to say that Philadelphia is a fish lover's town, any time of the year. If you can't get enough of the ocean's bounty, here are four other great places for reeling in your favorites.

• **Anastasi Seafood** This Italian Market fixture has been around for so long, many locals don't even call it by the right name. (If you hear people talking about "Anastasia's," this is the joint.) It's a combination fish market and restaurant where fresh catches for sale at the counter wind up on the dinner table. Find shrimp cocktail, Dungeness crab clusters, whole branzini and snapper, grilled octopus and fried flounder. The bar is a great spot for happy hour, when oysters are a "buck-a-shuck," crab cake sliders and glasses of house wine are \$4 and draft beers are \$5. 1101 S. 9th St., 215.462.0550, anastasiaseafood.com

• **The Olde Bar** One of the best restaurants Jose Garces has put out in years lives in the historic, ballyhooed bones of Old Original Bookbinders, a fish house that catered to politicians, big wigs and celebrities in the 1950s. The handsome bar anchors the space in waves of carved mahogany, with nautical caged lights and low pressed-tin ceilings. Think saloon on a luxurious ocean liner. The menu isn't chef-driven, but beautifully manages with updates on classics like snapper soup, fish and chips and lump crab cakes. The East and West Coast oysters are pristine. Add in a deep catalogue of classic and original cocktails—black-pepper mules, elaborate swizzles, sours as foamy as the ocean surf and an artisanal Grass-hopper for a new generation of drinker—and you have more than enough reasons to visit. 125 Walnut St., 215.253.3777, theoldebar.com

• **Oyster House** Sam Mink's grandfather founded Sansom Street Oyster House in 1947, but Mink is credited with bringing the classic seafood house back to relevance. Now, the place gleams with miles of white subway tiles, vintage oyster platters decorating the

walls and a raw bar where shuckers unhinge 10 types of bivalves, including the hometown favorite, Cape May Salts. Chef Brett Naylor also sends out plenty of cooked dishes from seared scallops with butternut squash and chickpea curry to one of the city's best lobster rolls, complemented by excellent gin cocktails. The restaurant's crowd-pleasing "Dump Dinner" (below) involves a whole Maine lobster, steamed clams and mussels, seasonal vegetables, sausage, potatoes, cabbage slaw and fries for \$35 per person. 1516 Sansom St., 215.567.7683, oysterhousephilly.com

• **Jose Pistola's, Sancho Pistola's & Pistola's del Sur** This trio of lively cantinas share an executive chef/partner in Adan Trinidad and overlapping menus in which seafood is a particular strength. Trinidad does a knockout job blending traditional dishes from his Mexican heritage with a global hipster aesthetic. Think tacos cradling rock shrimp with pineapple pico de gallo and togarashi-spiced tuna and crab enchiladas in a lake of pasilla cream sauce. Ceviches and tiraditos explode with the vibrant acidity of a fresh-squeezed margarita. Jose Pistola's, 263 S. 15th St., 215.545.4101, josepistolas.com; Sancho Pistola's, 19 W. Girard Ave., 267.324.3530, sanchopistolas.com; Pistola's del Sur, 1934 E. Passyunk Ave., 267.928.4339



Oyster House

LOCAL FLAVORS



Hello Donuts

Going Nuts for Doughnuts

Philadelphia has a long history with deep-fried dough, dating back to the 17th century and the area's Pennsylvania Dutch settlers, who invented the precursor to the modern doughnut. Now, restaurants all around town offer batches of the baked treat. Whether you like them powdered or glazed, cakey or yeasted, whole or with a hole, there's a doughnut in Philadelphia for you.—*A.E.*



Curiosity Doughnuts

FRIED DOUGH DIARIES

Travel back in time to understand the city's love affair with this iconic treat.

1683 Solicited by William Penn, the first wave of German immigrants arrive in Philadelphia and settle in the counties west of the city between 1683 and 1783, where they would later come to be known as Pennsylvania Dutch (an appropriation of "Deutsch"). The majority of these immigrants were persecuted Christians, who observed the tradition of abstaining from meat in the pre-Easter period called Lent, which begins on Ash Wednesday. The day before is Shrove Tuesday, a last hurrah when it's traditional to eat dough fried in lard—the proto-donut known as a fastnacht.

filling doughnuts to order with various creams and jellies.

1949 After completing service in the Navy, Alan Ebert purchases Springdale Farms in Cherry Hill, New Jersey, which to this day makes the best cider doughnuts in the area.

1965 Dunkin' Donuts opens its first location in Philly, on 7000 Chester Avenue. It's still there today.

1985 Beiler's, a produce stand in Reading Terminal, starts selling doughnuts, which eventually becomes its most popular product.

2010 John Colosi buys Frangelli's and brings

back a classic: the ice cream doughnut, a block of Neapolitan wrapped in a soft hole-less doughnut. Meanwhile, PYT, a youthful restaurant in Northern Liberties, introduces the Krispy Kreme Burger, two beef patties with American cheese and chocolate-covered bacon on a glazed doughnut.

2011 Michael Solomonov and Steve Cook open Federal Donuts, a fried chicken-and-doughnut shop in Pennsport, with other partners. Their cake doughnuts are served fresh-fried and dusted with Middle Eastern-spiced sugars or glazed and festooned ahead of time in flavors like triple chocolate and guava poppy. Philadelphia collectively loses its mind.

2013 The city's first UNDRGRND Donuts food truck rolls into town.

2015 Aki Kamozaawa and Alex Talbot, chefs and authors of the influential blog-turned-cookbook *Ideas in Food*, open Curiosity Doughnuts in Jersey's

Stockton Market, where the yeasted treats have crackly shells, tender interiors and glazes like caramel and passion fruit. They're only open Sat.-Sun., inspiring carpools of Philadelphians to hit the road every weekend. At the same time, Jeff Poleon and Matt Quinn found Dottie's Donuts, the city's first vegan doughnut shop.

2016 Dottie's jumps from wholesale to retail, with a brick-and-mortar location in on the westside.

MAY 2017 Music pals Joe Marro, Zach Zarrillo, Ben Walsh and Scott Luciano team up with ReAnimator Coffee's Mark Corpus and Mark Capriotti to launch Hello Donuts, a wholesale-and-pop-up bakery supplying café's like Herman's Coffee and Benna's West with cake and yeast donuts, plus fruit fritters made for the omnivorous and vegan crowds.

OCTOBER 2017 The Federal Donuts crew publishes "Federal Donuts: The (Partially) True Spectacular Story."



Federal Donuts

the where guide →

● Shopping | December



Tildie's Toy Box

The local owners of this East Passyunk kids' store take pride in carrying a hand-picked selection of toys designed to keep kids entertained for hours *and* foster learning. Among the packed shelves, find puzzles, stuffed animals and games that meet STEM standards. www.tildiemytoybox.com. 1829 E. Passyunk Ave., 215.334.9831.



Jacques Ferber Outerwear

Though it originally supplied furs to Parisian designers like Chanel, Lanvin and Worth, Jacques Ferber set up its flagship store in Philadelphia in 1911. Now more than just a supplier, this boutique carries a full line of outerwear in addition to top-notch furs. www.jacquesferber.com. 1708 Walnut St., 215.735.4173. Map 1, G5



Shibe Vintage Sports

Standing out in a crowd of roaring sports fans can be difficult, especially when they're all wearing the same jerseys and caps. This store solves that problem with vintage Philly T-shirts, baseball caps and accessories you can't easily find these days. www.shibevintagesports.com. 137 S. 13th St., 215.566.2511. Map 1, I5

Apparel - Men

COMMONWEALTH PROPER—Expert style consultants work with individuals to create not only custom suits, but also shirts and even casual pieces designed to fit like a glove. By appt. only M-F 10 am-6 pm, Sa-Su 10 am-4 pm. www.commonwealthproper.com. 1839 Chestnut St., 267.319.1741. Map 1, G5

DISTANTE—Since 1983, this boutique has been offering the latest in business attire and upscale looks, plus custom outfits made in Naples, Italy. By appt. only. Call to reserve. www.distanteclothing.com. 1510 Sansom St., 215.545.2850. Map 1, H5

HENRY A. DAVIDSEN—This tailor and custom clothier located one block from Rittenhouse Square also offers image consulting and ready-to-wear selections, including cufflinks, pocket squares and rounds, ties and more. By appt. only. www.henyridavidson.com. 1701 Spruce St., 215.310.0219. Map 1, G6

MY.SUIT—This New York City made-to-measure has earned raves since setting up in Rittenhouse Square. The shop offers expert measurements, hundreds of fabrics, a two-week turnaround on custom suits and reasonable prices. M-Sa 10 am-

7 pm, Su 12 pm-6 pm. www.mysuit.com. 1518 Walnut St., 215.545.3300. Map 1, H5

NUTZ & BOLTZ—North Wales native Anthony Noce's irreverent Washington Square West shop not only carries underwear and swimsuits, but also clothing by lines like Andrew Christian, Marco Marco and Nasty Pig. M-Sa 11 am-9 pm, Su 12 pm-5 pm. www.nutzandboltzfashion.com. 1220 Spruce St., 267.639.5958. Map 1, I6

P'S & Q'S—Scope out the hand-picked, premium items at this family-owned and operated menswear shop, which carries a large inventory of casual and work-ready looks by in-demand brands including Patagonia, Norse Projects, K-Way and Herschel Supply Co. M-Sa noon-7 pm, Su noon-6 pm. www.psandqs.com. 820 South St., 215.592.0888. Map 1, I7

Apparel - Men & Women

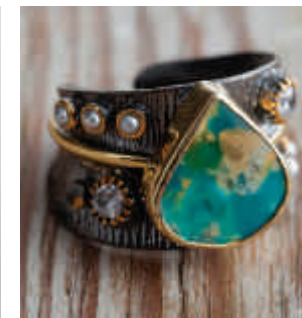
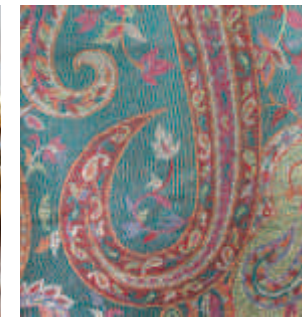
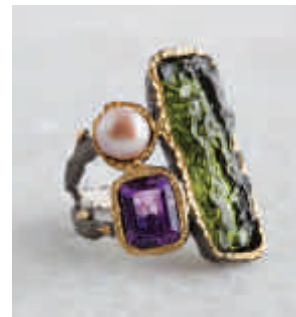
BOYDS PHILADELPHIA—One of the country's largest men's stores and the city's largest designer women's store, Boyds showcases the likes of Armani, Gucci, Zegna, Manolo Blahnik and Ferragamo. Free custom alterations and free valet parking. M-Sa 9:30 am-6 pm, W 9:30 am-

8 pm. www.boydspshila.com. 1818 Chestnut St., 215.564.9000. Map 1, G5

CRASH BANG BOOM—This indie shop just off of South Street specializes in punk rock clothing and accessories for guys and gals alike. Find leather jackets, plaid pants and rock music T-shirts from brands including Lip Service, Tripp NYC and Switchblade, plus studded jewelry, edgy shoes and rock memorabilia. M-Tu noon-7 pm, W-Th till 8 pm, F-Sa till 9 pm, Su till 6 pm. www.crashbangboomonline.com. 528 S. Fourth St., 215.928.1123. Map 1, K7

HATS IN THE BELFRY—This local chain offers a large selection of men's and women's dress and casual toppers from brands including Kangol, Stetson, Borsalino of Italy, plus styles from the hat company's own line. M-Sa 10 am-7 pm, W 10 am-8 pm, Su 11 am-6 pm. www.hatsinthebelfry.com. 1824 Chestnut St., 215.922.0303. Map 1, G5

LOST + FOUND—Affordable and trendy clothing, shoes, jewelry and handbags abound at this Old City storefront catering to both men and women. M-F 11:30 am-7 pm, Sa 11 am-7 pm, Su noon-6 pm. 133 N. Third St., 215.928.1311. Map 1, K4



NEW ARRIVALS ALL YEAR LONG

MIDTOWN 113 SOUTH 13TH STREET, PHILADELPHIA
215.560.8733
Monday- Saturday 11AM to 8PM
Sunday 12PM to 6PM

RITTENHOUSE 1700 SANSOM STREET, PHILADELPHIA
215.560.8734
Monday- Saturday 10AM to 7PM
Sunday 11AM to 6PM

SHOPS AT LIBERTY PLACE 1625 CHESTNUT STREET PHILADELPHIA, PA 19103
215.557.9050
Monday- Saturday 9:30AM to 7PM
Sunday 12PM to 6PM

WWW.BELLATURKA.COM



(FROM LEFT) ©ALBERT YEE/TILDIE'S TOY BOX; ©KELSEY LAUREN PHOTOGRAPHY/JACQUES FERBER OUTERWEAR; COURTESY SHIBE VINTAGE SPORTS



SOUTH MOON UNDER—Inside this spacious Center City shop, find hip, casual looks by Citizens of Humanity, Frye, Juicy Couture and Marc by Marc Jacobs. M-Sa 10 am-7 pm, Su noon-5 pm. www.southmoonunder.com. 1731 Chestnut St., 215.563.2298. **Map 1, G5**

SUGARCUBE—Locally owned, beautifully spacious and always inviting, Sugarcube is known for its selection of independent designers and vintage styles by A.P.C., Dunderdon, Gestuz, Frock! by Tracy Reese, Pendleton and Bing Bang Jewelry. M-Sa noon-7 pm, Su noon-5 pm. www.sugarcube.us. 124 N. Third St., 215.238.0825. **Map 1, K4**

VINCE—This luxury line located in the Rittenhouse Square neighborhood offers its signature collection of minimalist styles. Shop the iconic essentials collection or the vast selection of ready-to-wear clothing and accessories. M-W 10 am-6 pm, Th-Sa till 7 pm, Su noon-5 pm. www.vince.com. 1701 Walnut St., 215.220.4965. **Map 1, G5**

Apparel - Women

323 ARCH STREET FASHION COLLECTIVE—This “work/shop” concept is run by designers who create items in house. Shoppers browse a collection of locally made women’s clothing, accessories and jewelry, all within view of the studio. Tu-F noon-5 pm. www.323arch.com. 323 Arch St., 215.546.5975. **Map 2, D2**

CACTUS COLLECTIVE—Located along Fashion Row in Queen Village, this eclectic communal store gives shoppers a taste of Philly’s indie style with a mix of vintage and locally made boho clothing, jewelry and gifts. Treasure hunters also score original art in the rotating gallery at the back of the shop. W-M noon-7 pm. 739 S. 4th St., 267.908.4178. **Map 1, K7**

CHARLIE’S JEANS—Owner Sebastian McCall’s “Best of Philly 2011” (Philadelphia Magazine) shop is stocked with sought-after lines of designer denim. M-Sa 11 am-8 pm, Su 11 am-6 pm. www.charliesjeans.net. 233 Market St., 215.923.9681. **Map 1, K5**

ELLELAURI—Located in the heart of the fashion-forward Rittenhouse Square neighborhood, this chic women’s clothing brand is known for offering modern looks in elegant silhouettes and a sophisticated color palette at affordable prices. M-Sa 10 am-7 pm, Su 11 am-5 pm. www.ellelauri.com. 114 S. 19th St., 267.457.5939. **Map 1, G5**

JOAN SHEPP—With more than 40 years in the biz, Shepp purveys women’s designer apparel and accessories from top (but harder-to-find) European and American brands, including Dries van Noten, Rick Owens and Yohji Yamamoto. M-Tu and Th-Sa 10 am-6 pm, W till 8 pm, Su noon-5 pm. www.joanshepp.com. 1811 Chestnut St., 215.735.2666. **Map 1, H5**

KIMBERLY BOUTIQUE—An industrial-chic atmosphere provides a cool backdrop for fashion-forward designs from Alice+Olivia, Drew, Lysse, Hudson Jeans, Lilla P and more at this hip shop. M and Sa 10 am-6 pm, Tu-F till 7 pm. www.kimberlyphilly.com. 123 S. 16th St., 215.564.1066. **Map 1, H5**

LOU LOU BOUTIQUE—This small chain is known for offering a selection of stylish women’s accessories in a boutique setting is new to the Midtown Village neighborhood. In addition to three signature lines, shoppers can find designer-inspired jewelry, handbags, scarves, hats and sunglasses, plus a wide range of gift items. Since prices are affordable,

a few items snagged here won’t break the bank. M-W 11 am-8 pm, Th-Sa 11 am-9 pm, Su 11 am-6 pm. www.loulouboutiques.com. 143 S. 13th St., 267.538.1267. **Map 1, I5**

PLATINUM—Since 1999, this one-stop shop has been offering high-quality name brand clothing from 7 For All Kind, Diesel, Lacoste, True Religion, Comme Des Garçons and more. Su-M 11:30 am-8 pm, Tu-Th till 9 pm, F-Sa till 10 pm. www.shopatplatinum.com. 526 South St., 215.599.7528. **Map 1, J7**

SOPHY CURSON—This salon-like spot carries a well-curated collection of gowns, day-into-evening looks, jewelry and accessories by Blumarine, Piazza Sempione and Tom & Linda Platt. M-F 9:30 am-5:30 pm, Sa till 5 pm. www.sophycurson.com. 19th and Sansom streets, 215.567.4662. **Map 1, G5**

STEEL PONY—Longtime fashion insiders Joanne Litz and Dennis Wolk offer eco-friendly boho fashions and accessories that you can see being hand-dyed and sewn right in the store. Many items are one-of-a-kind and all are made in Philly with sustainable, locally sourced materials. Visit www.steelpony.com for store hours. 758 S. 4th St., 215.467.6065. **Map 1, K7**



CENTER CITY'S PREMIERE SHOPPING DESTINATION

ORANGETHEORY FITNESS
BLOOMINGDALE'S, The Outlet Store
ONE LIBERTY OBSERVATION DECK
THE BODY SHOP
SUNGLASS HUT
KIEHL'S
LOFT
J. CREW
ALDO

THE SHOPS AT LIBERTY PLACE
16TH & CHESTNUT • PHILA
SHOPSATLIBERTY.COM



VAGABOND BOUTIQUE—Located in Old City, this boutique and yarn shop highlights hand-knit sweaters, jumpsuits and crop tops with a bohemian vibe, plus a chic assortment of accessories. M-Sa 11 am-7 pm, Su till 5 pm. www.vagabondboutique.com. 37 N. Third St., 267.671.0737. **Map 1, K4**

Bath & Beauty

BLUEMERCURY—This East Coast company carries high-end cosmetics, skincare, haircare and fragrances with wise counsel by staff in a pressure-free environment. The brand’s Tropicana location in Atlantic City has a full spa offering treatments

like crystal facials, aromatherapy massages, detoxifying sea salt scrubs and more. M-Sa 10 am-7 pm, Su noon-5 pm. Spa Hours: M-Sa 9 am-8 pm, Su 11 am-6 pm. www.bluemercury.com. 1707 Walnut St., 215.569.3100. **Map 1, G5**

DUROSS & LANGEL—Proprietors Steve Duross and James Langel combine old family recipes and modern science to create a signature line of natural soaps, salts, lotions and potions inside their colorful, contemporary apothecary. Ask about classes and workshops. M-Sa 11 am-7 pm, Su noon-5 pm. www.durossandlangel.com. 117 S. 13th St., 215.592.7627. **Map 1, I5**

Books & Music

ATOMIC CITY COMICS—This funky shop carries a wide selection of comics, graphic novels, back issues, manga and T-shirts, plus movies, toys and games. Look for frequent in-store events, too, including book signings. Su-Tu noon-9 pm, W-Sa, 11 am-11pm. www.bestphillycomics.com. 638 South St., 215.625.9613. **Map 1, J7**

HEAD HOUSE BOOKS—Books covering every surface and a friendly staff help create an inviting space for browsing. Enjoy a free cup of coffee and settle in for a few hours. M-Sa 10 am-7pm, Su till 5pm. www.headhousebooks.com. 619 S. Second St., 215.923.9525. **Map 1, K7**

JOSEPH FOX BOOKS—This charming spot in Center City offers an array of selections from architecture and non-fiction to literature and poetry. M-Sa 9:30 am-6 pm, W till 7 pm. www.foxbookshop.com. 1724 Sansom St., 215.563.4184. **Map 1, G5**

VINTAGE INSTRUMENTS—Since 1974, this local institution has focused on fine acoustic instruments, including a wide selection of C.F. Martin & Co. guitars for people at all musical levels, from weekend pickers to seasoned professionals. Other treasures abound in this 19th-century architectural treasure, from ukuleles to banjos and mandolins. Accessories include cases, strings and straps. M-F 10 am-5 pm. www.pickmartin.com. 507 S. Broad St., 215.545.1000. **Map 1, H6**

Children

BORN YESTERDAY—This boutique on Rittenhouse Square carries clothing and toys for infants and children from a wide range of European and domestic designers. M-Sa 10 am-6 pm, Su 11 am-5 pm. www.bornyesterdaykids.com. 1901 Walnut St., 215.568.6556. **Map 1, G5**

MOMO'S TREE HOUSE—Wrangling kids into this Old City boutique won't be a hassle—Momo's not only provides toys from hard-to-find specialty makers, but encourages tots to test them out on the spot. M-F 11 am-6:30 pm, Sa 10:30 am-6:30 pm, Su 11 am-5 pm. www.momostreehouse.com. 205 Arch St., 267.457.2803. **Map 1, K4**

Crafts

BEADWORKS—A large selection of beads, gemstones, tools and notions helps DIYers create their own jewelry with the help of knowledgeable staff. M-W, F and Su noon-6 pm, Th and Sa 11 am-7 pm. www.beadworkshiladelphia.com. 619 E. Passyunk Ave., 215.413.2323. **Map 1, K7**

LOOP—This colorful store offers natural fiber, hand-painted and luxury yarns for knitting and crocheting. The shop also carries a full range of patterns, needles and notions and offers classes for all skill levels. M-F 11 am-6 pm, Sa-Su 11 am-5 pm. www.loopyarn.com. 1914 South St., 215.893.9939. **Map 1, G7**

PENNSYLVANIA GUILD OF CRAFTSMEN—One of the nation's largest and most recognized craft guilds puts on mutple fairs throughout the year. www.pacrafts.org. 335 N. Queen St., Lancaster, Pa., 17143.1.8706.

RITTENHOUSE NEEDLEPOINT—With 1,100 square feet of space, this shop carries all manner of tools and notions for needlepoint, including hand-painted canvases, top-quality fibers, accessories, books and even finished items. Tu-Sa 10:30 am-5:30 pm.

Old Masters Now



Celebrating the Johnson Collection Through Feb 19



Portrait of a Young Gentleman, 1474, by Antonello da Messina (John G. Johnson Collection, 1917, cat. 159)

Philadelphia
Museum of
Art



THE GUIDE

www.rittenhouseneedlepoint.com. 1737 Chestnut St., 2nd Floor, 877.764.6880. **Map 1, G5**

Gifts & Decor

THE ART SHOP AT MOORE COLLEGE OF ART & DESIGN—Within this formidable arts-education institution is an excellent shop dealing in jewelry, scarves and accessories, as well as prints and greeting cards. The art and design pieces are created by Moore's emerging and established alumni as well as current students. M-Sa 10 am-6 pm, Su noon-5 pm. www.moore.myshopify.com. 1916 Race St., 215.965.8586. **Map 1, G4**

ART STAR—Admire handmade clothes, jewelry and accessories, plus dolls, ceramics and prints at this gallery-style boutique in Northern Liberties. Tu-Sa 11 am-7 pm, Su noon-6 pm. www.artstarphilly.com. 623 N. Second St., 215.238.1557. **Map 1, K2**

CONTESSA'S FRENCH LINENS—Find lovely imported tablecloths and tea towels from Provence, Brittany and other French regions, plus one-of-a-kind aprons, jewelry and rosemary baskets at this shop in the historic Reading Terminal Market. M-F 10 am-5:30 pm, Sa 9 am-5:30 pm, Su 10 am-3 pm. www.conteassafrenchlinens.com. 51 N. 12th St., 610.306.4507. **Map 1, I4**

HELLO WORLD—Fans of mid-century modern head to this University City storefront for retro furnishings, funky fittings and accessories like vintage dominoes, plus gifts under \$25. M-F 10 am-6 pm, Sa-Su noon-5 pm. www.shophelloworld.com. 3610 Sansom St., 215.382.5207. **Map 1, C5**

THE MUSEUM STORE AT PAFA—The academy's gift shop stocks items inspired by exhibitions, plus accessories, jewelry, stationery and handcrafted decorative objects. Tu-Sa 9:30 am-5:30 pm, Su 11 am-5:30 pm. www.pafa.org/store. 128 N. Broad St., 215.972.2075 **Map 1, H4**

THE MUSEUM STORE AT THE PHILADELPHIA MUSEUM OF ART—At the museum's gift shop, find items inspired by past and current exhibitions, including posters, prints, jewelry, music and DVDs, toys, housewares, clothing and accessories. www.philamuseumstore.org. 2600 Benjamin Franklin Parkway, 215.684.7960. **Map 1, E2**

OCCASIONETTE—Established in 2013 by designer Sara Villari, this well-curated shop on South Philly's East Passyunk Avenue has become a fixture for one of the city's largest selections of independent cards, candles, tea towels, jewelry, barware, notebooks, journals, photo frames and more. M-F noon-8 pm, Sat 11 am-8 pm, Sun 11 am-6 pm. www.occasionette.com. 1825 East Passyunk Ave., 215.465.1704. **Map 3, B3**

OMOI ZAKKA SHOP—Inspired by cozy Japanese-style gift shops, this off-Rittenhouse boutique stocks a carefully curated selection of "uncommon" accessories for home and office. M-Sa noon-7 pm, Su noon-6 pm. www.omoionline.com. 1608 Pine St., 215.545.0963. **Map 1, H6**

OPEN HOUSE—In this Center City spot, shoppers easily get lost among co-owners Marcie Turney and Valerie Safran's beautiful mix of kitchen goods, jewelry, furnishings and bath products. M-Sa 11 am-8 pm, Su noon-6 pm. www.openhouseliving.com. 107 S. 13th St., 215.922.1415. **Map 1, I5**



WE-VIBE

The ultimate in discreet pleasure.

Jive by We-Vibe™
Wearable G-spot vibrator



Piazza Sempione

Blumarine

Fabiana Filippi

Tom & Linda Platt

Catherine Regehr

Wolford

Designer Planet

Sizes 2-18

Daytime to Evening
Fall 2017

Sophy Curson

19th & Sansom Streets 215.567.4662

SHOPPING



PAPER ON PINE—This bright, airy shop features stationery brands from classic and chic (Crane & Co., Kate Spade) to eco-friendly and irreverent (Russell + Hazel, Knock Knock). M-Sa 11 am-7 pm, Su noon-5 pm. www.paperonpine.com. 115 S. 13th St., 215.625.0100. **Map 1, I5**

PHILADELPHIA INDEPENDENTS—At this Old City gift shop, you won't find the usual Phillies tees and Liberty Bell snow globes. Philadelphia Independents stocks only handmade items by local makers, including jewelry, ceramics, accessories, home decor, artwork and baby gifts. M-Sa 11 am-7 pm,

Su 11 am-5 pm. www.philadelphiaindependents.com. 35 N. Third St., 267.773.7316. **Map 1, K4**

STADLER-KAHN—Don't blink, or you might pass by this subterranean jewel box, an "elevated five and dime." Proprietor Alexander Stadler stocks the space with his own designs, plus smart antique furnishings and fittings, designer vintage clothing, jewelry, toys, stationery, and even fine art. M by appt., Tu-Sa 11 am-6 pm. www.stadler-kahn.com. 1724 Sansom St., 267.242.7154. **Map 1, G5**

URBAN PRINCESS BOUTIQUE—This store is often recognized as a top spot for one-of-a-kind, affordable clothing and gifts. Inside, shop products by local artisans, like organic soaps and beauty products, jewelry, handbags and clothing. New inventory arrives almost daily. M-Sa 11:30 am-6:30 pm, Su noon-5 pm. www.urbanprincessboutique.com. 620 S. Fourth St., 267.909.8317. **Map 1, K7**

VERDE—A wide variety of colorful jewelry, accessories, perfume and whimsical gifts fill this shop. Head to the rear to watch chocolatiers make Marcie Blaine artisanal truffles, then select a few treats to take home. M-Sa 11 am-8 pm, Su noon-6 pm. www.verdephiladelphia.com/verde. 108 S. 13th St., 215.546.8700. **Map 1, I5**

Gourmet & Specialty Foods

DI BRUNO BROTHERS—The original Italian Market outpost of this Philly mecca for world-class cheese bustles day and night. At the Chestnut Street location, find a gourmet food emporium with take-out panini, gelato and additional specialty items. Hours vary by location. www.dibruno.com. The Market at Comcast Center, 1701 JFK Blvd., 215.531.5666. **Map 1, G4**; 1730 Chestnut St., 215.665.9220. **Map 1, G5**; Italian Market, 930 S. Ninth St., 215.922.2876. **Map 1, J8**

LORE'S CHOCOLATES—While in the historic district, indulge your sweet tooth with this candy shop's peanut butter balls, vanilla caramels and Liberty Bell-shaped chocolates, among other tasty selections. M-F 9 am-5 pm, Sa 10 am-4 pm. www.loreschocolates.com. 34 S. Seventh St., 215.627.3233. **Map 1, J5**

READING TERMINAL MARKET—Founded in 1893, this market has evolved into one of the city's major food meccas, where visitors can sample international and local specialties, including cheesesteaks and Pennsylvania Dutch treats. M-Sa 8 am-6 pm, Su 9 am-5 pm. www.readingterminalmarket.org. 12th and Arch streets, 215.922.2317. **Map 1, I4**

ROCKET FIZZ—Feed your nostalgia at this retro candy shop, offering everything from candy dots and whirly pops to bulk saltwater taffy, plus a variety of soda selections in flavors like bacon, s'mores and mud pie. M-Th 11 am-6 pm, F 11 am-8 pm, Sa 10 am-8 pm, Su 10 am-6 pm. www.rocketfizz.com. 302 Arch St., 215.650.3163. **Map 1, K4**

Jewelry

ADORNAMENTI—This warm and inviting shop on Antique Row carries a beautiful array of distinctive jewelry, from delicate pieces crafted with finely wrought silver to opulent baubles studded with semiprecious stones. M and W-Sa noon-5 pm, Su noon-5 pm. 1106 Pine St., 215.922.2722. **Map 1, I6**

ANALOG WATCH CO.—This independent watchmaker focuses on craftsmanship in designing minimalist timepieces, allowing natural materials to shine. Tu-Sa 9 am-5 pm. www.analogwatchco.com. 1737 E. Passyunk Ave., 484.808.5831. **Map 3, D3**

BARIO-NEAL—Handcrafted in Philadelphia, this line of sophisticated jewelry is made exclusively with reclaimed precious metals, ethically sourced stones and low-impact, environmentally conscious practices. W-Th noon-6 pm, F-Su 11 am-6 pm. www.bario-neal.com. 700 S. Sixth St., 215.454.2164. **Map 1, K7**



Maryanne S. Ritter Jewelers

MARYANNE S. RITTER JEWELERS CARRIES A WIDE SELECTION OF CUSTOM DESIGNS IN FINE COLORED GEMSTONES AND DIAMONDS.

215.922.4923
704 SANSOM STREET • PHILADELPHIA, PA 19106
WWW.MARYANNESRITTERJEWELERS.COM



BELLA TURKA—The local owners of this jewelry shop regularly travel around the world in search of chic baubles, like gold coin necklaces, cocktail rings and chunky stone cuffs, and also offer funky items from select domestic designers. 13th and Sansom St.: M-Sa 11 am-8 pm, Sun till 7 pm. 17th St.: M-Sa 10 am-7 pm, Sun 11 am-7 pm. www.bellaturka.com. 113 S. 13th St., 215.560.8733 **Map 1, I5**; 1700 Sansom St., 215.560.8734. **Map 1, G5**

EGAN DAY—Inside a stately Rittenhouse Square townhouse with minimalist furnishings, Kate Egan displays elegant necklaces, bracelets, rings and earrings from designers including Ted Muehling and Gabriella Kiss. M-Sa 11 am-6 pm. www.egan-day.com. 260 S. 16th St., 267.773.8833. **Map 1, H6**

GOVBERG JEWELERS—Launched in 1922, Govberg has become a Philadelphia institution thanks to its selection of fine timepieces. The shop is known internationally for carrying high-end, luxury brands including Patek Philippe, Rolex, Jaeger-LeCoultre and more. Trade-ins accepted. M-F 10 am-6 pm, Sa 10 am-5 pm. www.govbergwatches.com. 1521 Walnut St., 215.546.6505. **Map 1, H5**

LAGOS—Philadelphia-based jeweler Lagos' one-and-only flagship has been a fixture, located just steps from Rittenhouse Square. This jewel-box shop features award-winning collections in sterling silver and 18-kt. gold. Steven Lagos has been designing beautiful pieces accented with gemstones, diamonds and pearls for 40 years. Friendly and knowledgeable staff makes the shopping experience a pleasure. M-Sa 10 am-7 pm, Su noon-6 pm. www.lagos.com. 1735 Walnut St., 215.567.0770. **Map 1, G5**

MARYANNE S. RITTER JEWELERS—Open since 1909, this store's experts create custom designs for fine diamonds and gemstones, and offer quality jewelry at affordable prices. Look for a large selection of cultured freshwater and saltwater pearls. M-Tu and Th-F 10 am-5 pm, W 10 am-6 pm, Sa noon-5 pm. www.maryannesritterjewelers.com. 704 Sansom St., 215.922.4923. **Map 1, J5**

TOURNEAU—This international brand offers more than 100 watch brands, including Cartier, Fendi, Gucci and Movado, plus 8,000 unique styles for men and women. M-Sa 10 am-9 pm, Su 11 am-6 pm. www.tourneau.com. Plaza at King of Prussia Mall, 160 N. Gulph Road, King of Prussia, Pa., 610.491.8801. **Map 4, C1**

Salons & Spas

ADOLF BIECKER SPA SALON—This spa follows a "whole person" approach with services including massage therapy, body scrubs and facials. Call for appointment. M-F 8 am-8 pm, Sa till 6 pm, Su 9:30 am-6 pm. www.adolfbiecker.com. 1605 Sansom St., 215.735.6404. **Map 1, H5**

JUJU SPA & ORGANICS—A short stroll from South Street, this inviting spa specializes in all-natural skincare products, spa treatments and salon services. Su-M noon-7 pm, W-F 10 am-7 pm, Sa 10 am-6 pm. www.jujusalon.com. 713 S. Fourth St., 215.238.6080. **Map 1, K7**

MICUMBIA ORGANICA—This top-rated nail salon operated by a husband-and-wife team offers water- and soy-based products for mani-pedis, foot massages and Brazilian waxing. By appointment. Su-M 10 am-4 pm, W-Th noon-8 pm, Tu and F-Sa 10 am-6 pm. www.micumbia.co. 328 S. 17th St., 215.735.7980. **Map 1, G6**

MOKO—In the heart of Old City, Moko is a one-stop beauty shop specializing in natural treatments and products. Services include haircare and styling, scalp treatments, facials, waxing and makeup application. While you're there, stock up on natural soaps, skincare and makeup. Tu noon-6 pm, W-F 10 am-8 pm, Sa 10 am-6 pm. www.mokobeauty.com. 55 N. Third St., 215.922.MOKO. **Map 1, K4**

RESCUE RITTENHOUSE SPA—This upscale European-style contemporary space specializes in massage therapy, detoxification and microdermabrasion. M-F 9 am-8 pm, Sa 9 am-7 pm. www.rescuerrittenhousespa.com. 1601 Walnut Street, 3rd Floor, 215.772.2766. **Map 1, H5**

Shoes

BUS STOP BOUTIQUE—British-born Elena Brennan's Queen Village shop on historic Fabric Row has become a destination for fashionable shoes for both men and women. Look for unique and comfy styles from hard-to-find designers. M-Th 11 am-6 pm, F 11 am-7 pm, Sa 11 am-6 pm, Su noon-5 pm. www.busstopboutique.com. 727 S. Fourth St., 215.627.2357. **Map 1, K7**

HEAD START SHOES—Located in Center City, this footwear shop stocks styles from upscale designers, including Fiorentini & Baker, Roberto Del Carlo and Vic Matie. M-Tu 10 am-6 pm, W-Sa 10 am-7 pm, Su 11 am-5 pm. www.headstartshoes.com. 126 S. 17th St., 215.567.3247. **Map 1, G5**

LAPSTONE & HAMMER—Kate Rohrer designed this only-in-Philadelphia haven for sneakerheads. While the store's collection of well-tailored menswear, grooming products and accessories have received rave reviews, what truly commands attention in this 4,000-square-foot space is its extensive sneaker collection. M-Sa 10 am-7 pm, Su noon-5 pm. www.lapstoneandhammer.com. 1106 Chestnut St., 215.592.9166. **Map 1, I5**

TOBOX SHOES—This chic local men's shop offers stylish and sophisticated looks from a wide selection of top-quality shoes, accessories and leather goods. Brands include hard-to-find labels like John Lobb, Carmina and Rancourt. M-Sa 10 am-6 pm. www.toboxshoes.com. 1822 Chestnut St., 215.644.9435. **Map 1, G5**

UBIQ—This trendy sneaker shop carries Puma and Nike SB, plus racks of skater-inspired threads from 10 Deep, Stüssy, Undeafed and Original Fake. M-Sa 10 am-8 pm, Su noon-6 pm. www.ubiqlife.com. 1509 Walnut St., 215.988.0194. **Map 1, H5**

Shopping Centers

THE BELLEVUE PHILADELPHIA—Inside this historic 1904 Beaux Arts building in Center City, find upscale boutiques such as Tiffany & Co., Nicole Miller, Polo Ralph Lauren and Williams-Sonoma. Dining options include world-class restaurants XIX and The Palm, plus a gourmet food court. Also here, the state-of-the-art The Sporting Club fitness facility and Hyatt at The Bellevue. www.bellevuephiladelphia.com. 200 S. Broad St., 215.875.8350. **Map 1, H5**

KING OF PRUSSIA MALL—The East Coast's largest retail shopping center has seven top department stores, including Bloomingdale's, Lord & Taylor and Nordstrom, plus 400 specialty shops and restaurants. The mall is easily accessible from Routes 202, I-76 and the Pa. Turnpike. M-Sa 10 am-9 pm,



Vintage Instruments, Inc.

Featuring
C.F. Martin Guitar

Traditions That Improve with Time

507 South Broad Street,
Philadelphia, PA
215.545.1000

Martin & Co.
EST. 1833
D 35
TURNES
50

www.vintage-instruments.com




Bluestone Fine Art Gallery

72 North 2nd Street • Philadelphia
856.979.7588 • bluestone-gallery.com

Complimentary Shipping
within the United States

Trip Park Garden Party
30 x 30, Acrylic



Contessa's French Linens

- Authentic French tablecloth business
- One-of-a-kind, stain resistant linens
- Quimper Products
- Authentic French Jewelry
- Polish Pottery

Now selling machine washable linens made, designed and sewn in the South of France

Reading Terminal Market
12 & Arch Streets, 3rd Ave., Row B
610.306.4507 • contessafrenchlinens.com



READING TERMINAL MARKET
12th & Arch Streets
Philadelphia, PA 19107

SHOP LOCAL
A PHILADELPHIA TRADITION

Discover the diversity of fresh and prepared foods available at the Market. From Amish made breakfasts to international cuisines- we've got something for everyone's appetite.

Diverse. Charming. Inspiring. Delicious.
Shop Reading Terminal Market. All under one roof.

Monday - Sunday 8 AM - 6 PM
215-922-2317 • ReadingTerminalMarket.org

[f](#) [i](#) [t](#) [RdgTerminalMkt](#) [#LoveRTM](#) [#RTMcook](#)



Su 11 am-6 pm. www.kingofprussiamall.com. 160 N. Gulph Road, King of Prussia, Pa., 610.265.5727.

PHILADELPHIA PREMIUM OUTLETS—It's worth the trip to this upscale shopping destination, where 150 designer and high-end outlet stores offer discounts from 25 to 65 percent every day. For more savings, register online for the center's VIP Shopper Club. M-Sa 10 am-9 pm, Su 10 am-7 pm. www.premiumoutlets.com/philadelphia. 18 W. Lightcap Road, Limerick, Pa., 610.495.9000.

THE SHOPS AT LIBERTY PLACE—This indoor, Center City complex for fashion, jewelry, housewares and more has 55 specialty boutiques and international eateries. Retailers include Bloomingdale's The Outlet Store, ALDO Shoes and J. Crew. Take in Philadelphia from One Liberty Observation Deck. M-Sa 9:30 am-7 pm, Su noon-6 pm. www.shopsatliberty.com. 1625 Chestnut St., between Liberty I and Liberty II office towers, 215.851.9055. **Map 1, H5**

THE SHOPS AT UNIVERSITY SQUARE—On the University of Pennsylvania campus in University City, find a mélange of national and independent retailers—American Apparel, Urban Outfitters, Eastern Mountain Sports, Douglas Cosmetics and Penn Bookstore—plus top-notch dining options. www.universitysquare.biz/shop.html. 34th through 38th streets, Chestnut to Spruce sts. **Map 1, C5/D6**

Specialty Shops

EYESITE—Located near Rittenhouse Square, this gallery-style optical shop offers "museum-quality" prescription eyewear and sunglasses by independent makers around the world. Find frames made of wood, horn, even leather and stone. Custom work also available. Tu-F 10 am-6 pm, Sa till 5 pm. www.eyesite-phil.com. 111 S. 18th St., 215.557.0757. **Map 1, G5**

PHILLY AIDS THRIFT—This nonprofit founded in 2005 sells an eclectic collection of donated items with proceeds going to local organizations involved in the fight against HIV/AIDS. M-Th 11 am-8 pm, F-Sa 11 am-9 pm, Su 11 am-7 pm. www.phillyaidsthrift.com. 710 S. 5th St., 215.922.3186. **Map 1, K7**

PLEASURE CHEST—Since 1974, this adult boutique off Rittenhouse Square has been offering intimate toys and products (lubricants, harnesses, "Rabbits," lingerie, sensual novelties) for men and women with the help of discreet, knowledgeable and friendly staff. Tu-Sa 11 am-7 pm. www.pleasurechestphilly.com. 2039 Walnut St., 215.561.7480. **Map 1, G5**

Sporting Goods & Apparel

MITCHELL & NESS—The flagship store of this world-renowned sports gear seller offers more than 1,600 vintage jerseys, hats, warm-up suits and jackets. Don't miss the museum-quality memorabilia. M-Sa 10 am-7 pm, Su 11 am-5 pm. www.mitchellandness.com. 1201 Chestnut St., 267.273.7622. **Map 1, I5**

NOCTURNAL SKATEBOARDS—One of the Philadelphia skate scene's go-to supply stops and hangouts opened in 2000 by X Games gold medalist Kerry Getz. Skaters find clothes, shoes, decks, trucks, wheels and every manner of skate accessory. M-Th noon-8 pm, F noon-9 pm, Sa 11 am-9 pm, Su noon-6 pm. www.nocturnalskateshop.com. 533 South Street, 215.922.3177. **Map 1, J7**



Galleries+Antiques | December



The Center for Art in Wood

This nonprofit museum, gallery and research center has established itself as one of the premier institutions for wood-based art in the country, showcasing turned and carved sculptures by renowned artists and craftsmen. In addition to touring the museum's galleries, visitors attend free events and shop the gift store for art, jewelry and

wood-working tools. This month, exhibitions not to be missed include "Explorations in Wood: Selections from The Center for Art in Wood," opening Dec. 2, plus "The Selected Works of Dean Pulver" and "Criss Cross," both through Jan. 18. www.centerforartinwood.org. 141 N. 3rd St. 215.923.8000. Map 1, K4



Niederkorn Antique Silver

Opened in 1985, this antiques shop has been focusing on fine silver from the 19th and 29th centuries. The Rittenhouse Square shop brims with sterling Christmas ornaments, jewelry, tea sets and Judaica, drawing people from across the globe. www.niederkornsilver.com. 244 S. 22nd St., 215.567.2606. Map 1, G6

Antiques Shops

ANASTACIA'S ANTIQUES—Anastacia's is brimming with affordably priced antiques and quirky collectibles of all kinds, from furnishings and lamps to dolls, books and jewelry. Staff occasionally takes shopping trips for merchandise during store hours so call in advance. Th-Sa noon-6:30 pm, Su noon-5 pm. www.anastaciasantiques.com. 617 Bainbridge St., 215.928.9111. Map 1, J7

ANTIQUE SHOWCASE—Find fine European furniture, lighting accessories and objects d'art at this charming antique shop located in the Rittenhouse neighborhood. M-Sa 10 am-6 pm. www.antiqueshowcase.com. 1625 Pine St., 215.545.0860. Map 1, H6

ARCHITECTURAL ANTIQUES EXCHANGE—Across 30,000 square feet of space in the Northern Liberties neighborhood, this vast warehouse stock a range of architectural antiques, from the late 1700s through the 1930s. Exciting items have been reclaimed from French castles and churches; others include mantels, doors, beds, carved furniture and ironwork. M-Sa 10 am-5 pm. www.architecturalantiques.com. 715 N. Second St., 215.922.3669. Map 1, K2

FREEMAN'S—One of the premier auction houses for fine arts and antiques is also the nation's oldest. M-Th 9 am-5 pm, F 9 am-3 pm, special office hours during auction exhibitions. www.freemansauction.com. 1808 Chestnut St., 215.563.9275. Map 1, G5

GARDEN GATE ANTIQUES—Another stop in Chestnut Hill, this two-story shop features a wide range of items from West African art to Steiff animals, including but not limited to vintage and antique furnishings, clothing, jewelry and books. M-Sa 11 am-5 pm, Su noon-5 pm. www.bowmanch.com/property/gardengate. 8139 Germantown Ave., 215.248.5190.

GEORGE T. HOBE ANTIQUES & FINE ART—Art and artifacts from the 18th through the 20th centuries fill this cozy space to the brim. Objects sometimes even spill out onto the sidewalk for the casual passerby to admire. Tu-Th 7 am-2 pm or by appointment. 8407 Germantown Ave., 215.247.5733.

KOHN & KOHN ANTIQUES—Kohn & Kohn Antiques has been known for fine antiques in Philadelphia since 1932. Its inventory is broad with an emphasis on glass, furniture, porcelain and silver. Also check out the tobacciana collection, which includes cigarette cases, cigar cutters and elegant lighters. Open by appointment and by chance. www.kohnandkohnantiques.com. 1112 Pine St., 215.923.0432. Map 1, I6

LAVENDER HILL—Lavender Hill in Chestnut Hill caters to those who love decorating the home. Visitors can browse unique antique pieces as well as newer items made to look and feel old, from candles and brass lamps to dried flowers, frames, jewelry and soaps. Lots of great gift items here. Tu-Sa 11 am-5 pm, Su noon-4 pm. www.facebook.com/

Lavender-Hill-Home-246661762106742.
8121 Germantown Ave., 215.248.5591.

M. FINKEL & DAUGHTER—Opened in 1947 in an 1840s building on beautiful Antique Row, family-owned M. Finkel & Daughter continues to sell period antiques, 18th- and 19th-century furniture, and a highly acclaimed collection of needlework and silk embroideries spanning the 17th to mid-19th centuries. Call for an appointment. www.samplings.com. 936 Pine St., 215.627.7797. Map 1, I6

THE PHILADELPHIA PRINT SHOP—Pour over the impressive collection of more than 20,000 historical prints and antique maps from the 16th through the early-20th centuries. Those looking for an affordable piece of fine art will have luck here—many prints are priced under \$100. M-Sa 10 am-5 pm. www.philaprintshop.com. 8441 Germantown Ave., 215.242.4750.

Art Galleries

3RD STREET GALLERY—In the heart of Old City's gallery district, 3rd Street Gallery features a diverse mix of artists working in various media. In operation since 1978, this artist-run co-op is devoted to presenting a quality experience of visual arts, all the while encouraging risk and experimentation in their artists' works. W-Su noon-5 pm. www.3rdstreetgallery.com. 45 N. Second St., 215.625.0993. Map K4

GLG
GRAVERS LANE GALLERY
ART FOR THE HOLIDAYS
Paint | Sculpture | Glass | Textile | Jewelry | Ceramic

8405 Germantown Ave. | Philadelphia
www.graverslanegallery.com
215.247.1603
Gravers Lane Gallery is one division of The Goldenberg Group, which is composed of three entities: Goldenberg Development, People Helping People Foundation, and Goldenberg Properties.

Here today.
where tomorrow.

Before you travel,
go to wheretraveler.com
and see where to shop, dine
and play once you arrive.

wheretraveler.com
Info only locals know.

wheretraveler.com

B SQUARE GALLERY—Run by Heather Bryson, B Square Gallery is the art lover's best bet for finding work by Philly-based artists. Find custom jewelry designs, paintings and functional art. Inspired by nature and the challenge of transforming interesting objects into jewelry, Bryson has a vast selection of one-of-a-kind items, making it easy for any shopper to find something that wows them. Open by appointment. www.bsquaregallery.com. 614 S. Ninth St., 215.625.0692. Map 1, J7

THE BAZEMORE GALLERY—Located in Manayunk, The Bazemore Gallery features an array of artists inside a gallery designed off the five elements of Feng Shui. Find pop imagery, abstract landscapes, glass blown artwork and more, plus, rotating exhibits and The Living Wall, an indoor sustainable planting panel. W-Su noon-7 pm. www.thebaze-moregallery.com. 4339 Main St., 215.482.1119.

BLUESTONE FINE ART GALLERY—Features original works by contemporary and traditional artists in a range of mediums including painting, ceramics and sculptures. See the work of well-known and emerging local artists. Each month new exhibitions kick off during Philadelphia's First Fridays, which draws hundreds of art lovers to the neighborhood. Tu-F 10 am-5 pm, Sa noon-4 pm. www.bluestone-gallery.com. 72 N. Second St., 856.979.7588. Map 1, K4

CALDERWOOD GALLERY—Owners Gary and Janet Calderwood showcase their personal art collection of 20th-century design and fine photography across 30,000 square feet in the heart of the Avenue of the Arts. Find museum-quality French Art Deco by Ruhlmann, Arbus, Dufrene and others, Mid-century Modern decorative arts and more. Gary Calderwood's photography presents a visual history of the 20th century. Ships internationally. M-F 11 am-5 pm, Sa-Su by appointment. www.calderwoodgallery.com. 242 Geiger Road, 215.546.5357.

CARRÉ D'ARTISTES—This art gallery is a leader in affordable, contemporary art, selling world-class, original paintings and specializing in a wide variety of artistic styles, from figurative and abstract to landscape, Pop and street art, all created by a vast collection of internationally known artists. Framing services available. Daily 11 am-8 pm, extended hours on First Fridays. www.carredartistesphilly.com. 104 S. 13th St., 215.735.2800. Map 1, I5

CERULEAN ARTS GALLERY & STUDIO—Just off of North Broad Street, the gallery exhibits eclectic decorative and fine art while the studio offers art instruction and weekend workshops. In addition to the displayed works of more than 100 artists, the gallery also proffers handmade wares from an additional 100 artisans. W-F 10 am-6 pm, Sa-Su noon-6 pm. www.ceruleanarts.com. 1355 Ridge Ave., 267.514.8647. Map 1, H2

THE CLAY STUDIO—This gallery and educational facility promotes the craft of ceramic arts through artist residencies, studio space, gift shop, educational and outreach programs and its permanent collection. The Clay Studio is dedicated to providing programs for all artists, emerging and expert. M-Sa 11 am-6 pm, Su noon-6 pm. www.theclaystudio.org. 139 N. Second St., 215.925.3453.

DA VINCI ART ALLIANCE—Founded in 1931, this South Philly-based nonprofit organization holds programs year-round in order to support regional artists. Programs include juried exhibitions, solo exhibitions and collaborations with other

nonprofit art organizations. Most events are free and open to the public. W 6-8 pm, Sa-Su 1-5 pm. www.davinciartalliance.org. 704 Catharine St., 215.829.0466. Map 1, J7

F.A.N. GALLERY—Located in a 1700's Colonial building in Old City, this gallery features emerging and established artists in the classic tradition of American painting. The first floor of the space features a different artist each month, with many artists coming from right here in Philadelphia, while the second floor displays group exhibitions, all ranging from figurative to landscape and still-life. W-Su noon-6 pm. www.thefangallery.com. 221 Arch St., 215.922.5155. Map 1, K4

FLEISHER ART MEMORIAL—In addition to offering a rotating display of wide-ranging works by local artists, this gallery also hosts an extensive catalog of inexpensive workshops and free classes for all skill levels. M-F 10 am-5 pm. www.fleisher.org. 719 Catharine St., 215.922.3456. Map 1, J7

FLEISHER/OLLMAN GALLERY—Founded in 1952, Fleisher/Ollman Gallery earned its reputation as a premier source of self-taught artists, and today it exhibits contemporary artists who reflect the influence of the self-taught, including Martin Ramirez, Bill Traylor and Tristin Lowe. Tu-F 10:30 am-5:30 pm (Sept.-July), Sa noon-5 pm (Sept.-May); call ahead in Aug. www.fleisher-ollmangallery.com. 1216 Arch St., suite 5A, 215.545.7562. Map 1, H6

GALLERY 1401—Part of the University of the Arts, this gallery on the 14th floor of Terra Hall showcases photography exhibitions by professionals in collaboration with the University. Exhibitions feature established and emerging photographers from all over the world. M-F 10 am-4 pm, Sa-Su by appointment. www.uarts.edu. The University of the Arts, 211 S. Broad St., 14th floor, 215.717.6300. Map 1, H6

GALLERY 51—This antique textile art and oriental rugs gallery features works from all over the world that span the last 2,000 years. Find tribal carpets from Central Asia, Ancient Coptic ethnographic textiles and work by contemporary artists including Alan Magee, Bo Young Moon and Christopher Windle. Tu-Sa 11 am-6 pm. www.gallery51.net. 51 N. 2nd St., 215.413.3191. Map 1, K4

GERSHMAN GALLERY—Here, you'll find innovative art celebrating Jewish culture, as well as a showcase of fine-art photography. M-F 9 am-5 pm. www.gershmany.org. 401 S. Broad St., 215.545.4400. Map 1, H6

GRAVERS LANE GALLERY—Located in Chestnut Hill, this edgy, contemporary art gallery exhibits works by both established and emerging artists from around the world. Its media spectrum is broad, including painting, sculpture, fiber and paper. M-Sa 10 am-6 pm, Su noon-5 pm. www.graverslanegallery.com. 8405 Germantown Ave., 215.247.1603.

GROSS MCCLEAF GALLERY—Representing local and national artists with a focus on contemporary art, this gallery has been active in the Philadelphia arts community for more than 40 years. Advising collectors and placing art in museums throughout the region, Gross McCleaf also features monthly rotating exhibitions in two main galleries. T-F 10 am-5 pm, Sa by appt. www.grossmccleaf.com. 127 S. 16th St., 215.665.8138.

TGIF! On the first Friday of every month, art galleries and shops in Philly's Old City neighborhood stay open late to host new exhibitions and special events.





Museums+Attractions | December



Fairmount Park Houses

A walk down boathouse row can be a relaxing way to see Christmas lights. But a tour through Fairmount Park's mansions offers a historic alternative, too. All month, these estates help get visitors in the holiday spirit with gingerbread houses, events and trees adorned with lights. Tickets, details at www.holidaysinthepark.com.



Philadelphia Museum of Art

This renowned museum houses major works of art from around the world. This month, "Between Craft and Industry" highlights Patricia Urquiola's keen eye for design, exploring her creative process from conception to finished product. \$20. www.philamuseum.org. 2600 Benjamin Franklin Pkwy., 215.763.8100. Map 1, E2



Penn Museum

This 1887 institution is known for its archaeological collection. Among many exhibits, "Native American Voices" explores the history of the Delaware Valley's Native American people with artifacts, recordings and digital displays that shed new light on these communities. \$15. www.penn.museum. 3260 South St., 215.898.4000. Map 1, D6

Admission/Discount Passes

CITYPASS—This nine-day pass (valid beginning with first day of use) offers savings of up to 44 percent off admission to attractions, including The Franklin Institute, One Liberty Observation Deck, Philly Trolley Works and The Big Bus Company, plus the Philadelphia Zoo or Adventure Aquarium. \$55; children (ages 2-12) \$35. www.citypass.com. 888.330.5008.

Amusement Park

ARNOLD'S FAMILY FUN CENTER—One of the largest indoor fun centers in the U.S. features electric go-karts, bumper cars, crazy cars, a bounce zone, laser tag, black-light mini golf and bowling lanes. Cafe, bistro and bar. Hours vary by season. www.arnoldsffc.com. 2200 West Drive, Oaks, Pa., 610.666.0600.

Art Museums

THE BARNES FOUNDATION—Established by Albert C. Barnes in 1922 to "promote the advancement of education and the appreciation of the fine arts and horticulture," the Barnes holds a superb collection of Impressionist, post-Impressionist and early-Modern paintings, as well as extensive collections ranging from African sculpture to European and Asian antiquities. "Kiefer Rodin," through March 12, 2018. \$10-\$25. W-M 10 am-5 pm. www.barnesfoundation.org. 2025 Benjamin Franklin Parkway, 215.278.7200. Map 1, G3

FABRIC WORKSHOP AND MUSEUM—

This nonprofit pushes the frontiers of contemporary art by supporting artists who work with experimental materials. Design enthusiasts find plenty to see here, from an extensive permanent collection to special exhibitions, plus lectures and tours. Don't miss the design-driven gift shop. "Process and Practice: 40 Years of Experimentation," Dec. 15-March 25, 2018. Free. M-F 10 am-6 pm, Sa-Su noon-5 pm. www.fabricworkshopandmuseum.org. 1214 Arch St., 215.561.8888. Map 1, I4

INSTITUTE OF CONTEMPORARY ART—On the University of Pennsylvania campus, this site features cutting-edge exhibits of contemporary and provocative visual art, plus artist talks, lectures, films and tours. "Nathalie Du Pasquier: Big Objects Not Always Silent," through Dec. 23. Free. W 11 am-8 pm, Th-F 10 am-6 pm, Sa-Su 10 am-5 pm. www.icaphila.org. 118 S. 36th St., 215.898.7108. Map 1, C5

JAMES A. MICHENER ART MUSEUM—This independent nonprofit museum features the art and culture of Bucks County, Pa., and is home to the largest publicly held collection of Pennsylvania Impressionist paintings. "George Sotter: Light and Shadow" through Dec. 31; "Dedicated, Displayed, Discovered: Celebrating the Region's School Art Collections," through Jan. 7, 2018. \$8-\$18. Tu-F 10 am-4:30 pm, Sa 10 am-5 pm, Su noon-5 pm. www.michenermuseum.org. 138 S. Pine St., Doylestown, Pa., 215.340.9800.

There's a lot more going on this month. Visit us online: wheretraveler.com

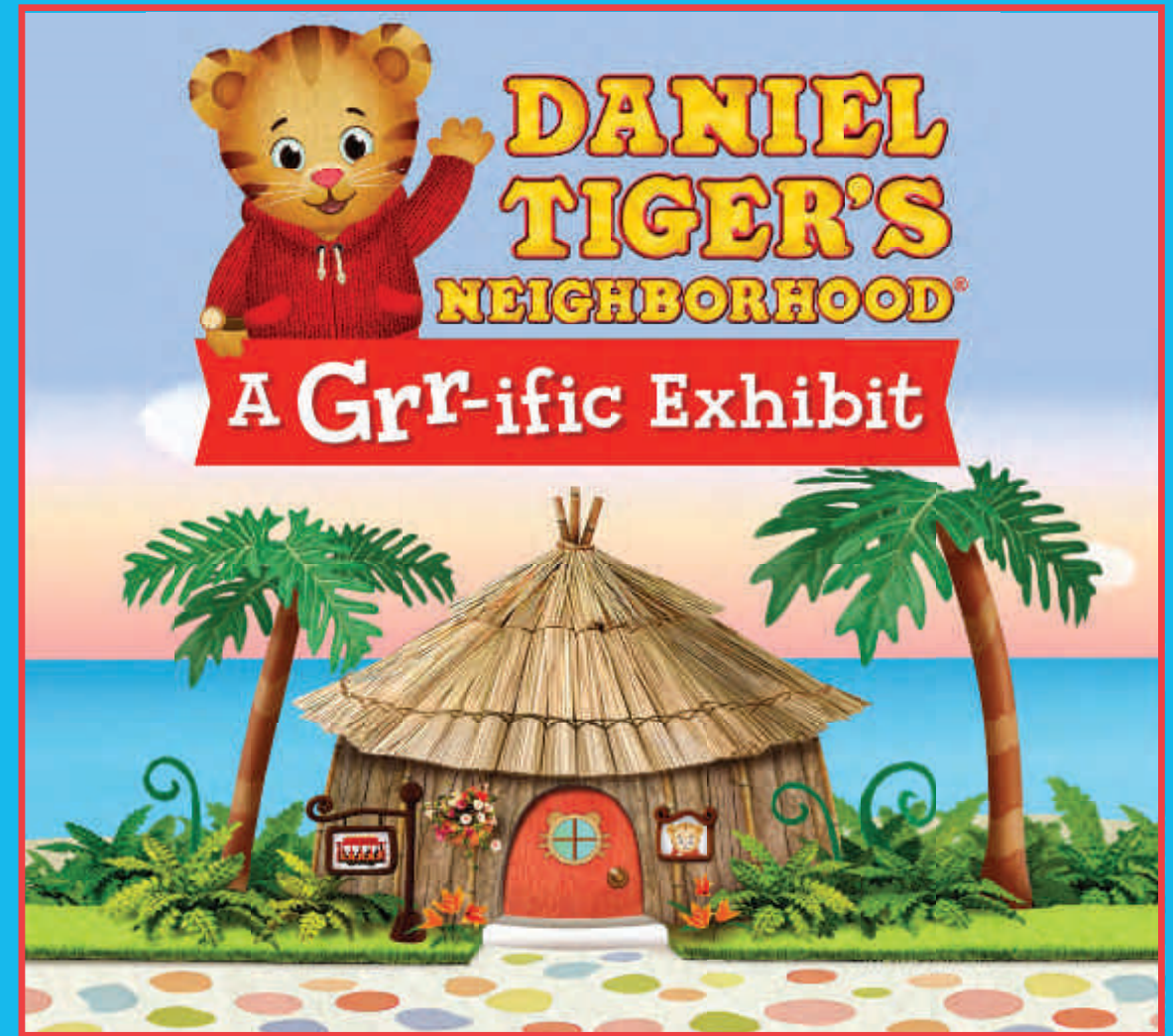
PENNSYLVANIA ACADEMY OF THE FINE ARTS—

This National Historic Landmark houses America's first art museum and art school, as well as one of the world's largest collections of American art, including works by Charles Willson Peale, Thomas Eakins, Mary Cassatt and Maxfield Parrish. "The Loaded Brush: The Oil Sketch and the Philadelphia School of Painting," through Feb. 4, 2018; "Chuck Close: Photographs," through April 8, 2018. \$8-\$15. Tu, Th-F 10 am-5 pm, W 10 am-9 pm, Sa-Su 11 am-5 pm. www.pafa.org. 118-128 N. Broad St., 215.972.7600. Map 1, H4

PHILADELPHIA MUSEUM OF ART—At this sprawling world-famous museum, see major works of fine and decorative art from across the globe, including examples by Philadelphia artists. Many visitors arrive just to run up the museum's front steps à la Rocky Balboa, but additional activities include guided tours, events and "Art After 5" every Friday with live music and cocktails. "Old Masters Now: Celebrating the Johnson Collection," ongoing. \$14-\$20 (good for two consecutive days to the main building, Perelman Building, the Rodin Museum, and Historic Houses Mt. Pleasant and Cedar Grove). Free shuttle between main building, Perelman buildings and Rodin Museum. Pay what you wish on first Sunday of month and every Wednesday after 5 pm. Tu, Th and Sa-Su 10 am-5 pm; W and F 10 am-8:45 pm. www.philamuseum.org. 2600 Benjamin Franklin Pkwy., 215.763.8100. Map 1, E2

(FROM LEFT) ©R. KENNEDY FOR VISIT PHILADELPHIA™; "ANTIBODY" CHAISE, PATRICIA URQUIOLA; MADE BY MOROSO S.P.A.; CAVALLICO, ITALY, 2006. GIFT OF FURY DESIGN, INC., PHILADELPHIA; COURTESY PENN MUSEUM

Please Touch Museum
presents



OPEN NOW!



pleasetouchmuseum.org   

4231 Avenue of the Republic, Philadelphia, PA 19131 • 215-581-3181



WHERE ARE THE WILD THINGS? At The Rosenbach (page 27), which houses famed author Maurice Sendak's own personal library of first editions.



PHILADELPHIA MUSEUM OF ART'S PERELMAN BUILDING—Across the street from Philadelphia Museum of Art's main building, this annex highlights collections of costumes, textiles, photos and contemporary design. \$14-\$20 (good for two consecutive days to the main building, Perelman Building, the Rodin Museum, and Historic Houses Mt. Pleasant and Cedar Grove). Free shuttle between main building, Perelman Building and Rodin Museum. Tu-Su 10 am-5 pm. www.philamuseum.org. 2525 Pennsylvania Ave., 215.763.8100. **Map 1, E2**

RODIN MUSEUM—The largest collection of the sculptor's work outside Paris includes casts of his most famous works, including "The Thinker" and "The Gates of Hell." The renovated grounds include lush gardens and a neoclassical Beaux Arts building. Free tours W-M at noon. \$7-\$10; \$20, good for two consecutive days to the main building, Perelman Building, the Rodin Museum and historic houses Mt. Pleasant and Cedar Grove. W-M 10 am-5 pm. www.rodinmuseum.org. 2151 Benjamin Franklin Parkway, 215.763.8100. **Map 1, F3**

Attractions

ADVENTURE AQUARIUM—Get up close and personal to sea creatures and wildlife in nearly 200,000 square feet of space at this aquarium, located just across the Delaware River on the Camden waterfront. See hippos in the West African River Experience, watch penguins swim on Penguin Island, and marvel at sharks in a 40-foot walkthrough tunnel. Neighbors Camden Children's Garden. \$21-\$28, under 2 free. Daily 10 am-5 pm. www.adventureaquarium.com. 1 Riverside Drive, Camden, N.J., 856.365.3300. **Map 1, 4K**

BATTLESHIP NEW JERSEY—One of the Navy's most decorated warships built here in Philly remains moored at the Camden Waterfront. Guided tours: \$17-\$21.95. Daily 9:30 am-5 pm. www.battleshipnewjersey.org. 100 Clinton St., Camden, N.J., 866.877.6262. **Map 1, 4K**

CARPENTERS' HALL—The site of the First Continental Congress, which met here in 1774, is also home to Franklin's Library Company, The American Philosophical Society, and the First and Second Banks of the United States. Find original chairs on display. Free. Tu-Su 10 am-4 pm. www.carpentershall.org. 320 Chestnut St., 215.925.0167. **Map 1, K5**

CITY HALL AND TOWER—Philadelphia's center of city government is the world's tallest masonry structure and the country's largest municipal building. City Hall and Tower tours depart at 12:30 pm (\$15.25). Tower tours depart noon-4:15 pm (\$8.25). M-F 9:30 am-4:30 pm. www.phila.gov. Broad and Market streets, 215.686.2840. **Map 1, H5**

DREAM GARDEN MOSAIC—Visitors seek out this beautiful, 15-by-49-foot mosaic inside the Curtis Center, the elegant building that once housed the offices of the Ladies Home Journal and the Saturday Evening Post. Completed in 1916, the mosaic was created by Louis Comfort Tiffany in conjunction with Philadelphia artist Maxfield Parrish (and based on Parrish's painting "The Dream Garden"). Free. M-F 8 am-6 pm, Sa 10 am-1 pm. www.visitphilly.com/music-art/philadelphia/dream-garden/. 601-645 Walnut St., 215.238.6450. **Map 1, J5**

EAKINS OVAL—Visible from anywhere on the Benjamin Franklin Parkway, Eakins Oval is especially breathtaking from the steps of the Philadelphia Museum of Art. The focal point is the Washington Monument fountain, with a bronze-and-granite

statue of George Washington on his horse capping a fountain decorated with animals and plants native to the country. www.theovalphl.org. 24th Street and Benjamin Franklin Parkway 215.422.4169. **Map F3**

EASTERN STATE PENITENTIARY HISTORIC SITE—Once the most famous and expensive prison in the world, this jail is now a haunting, crumbling, abandoned building remembered for its notorious captives. Tours include cell blocks, solitary punishment chambers, Al Capone's lavishly decorated jail, death row and newly opened hospital wing. \$12-16. Daily 10 am-5 pm. www.easternstate.org. 2027 Fairmount Ave., 215.236.3300. **Map 1, F2**

ELFRETH'S ALLEY—The oldest continuously occupied residential street in the U.S. features 18th- and 19th-century private homes. Visitors stroll the cobblestoned way named for Jeremiah Elfreth, taking in such quaint details as brass doorknobs, small-paned windows with flower boxes and brickwork. Find the Elfreth's Alley Museum in No. 126 and a gift shop and information center in No. 124. The museum offers guided tours F-Su noon-5 pm, in season (\$5). www.elfrethalley.org. Located off Second Street, between Race and Arch streets, 215.627.8680. **Map 1, K4**

INDEPENDENCE HALL—Built for the Pennsylvania legislature, Independence Hall became famous as the "Birthplace of the United States" after the Declaration of Independence was adopted and the U.S. Constitution was drafted here. Free, timed tickets available at the Independence Visitor Center (Sixth and Market streets). Daily 9 am-5 pm. www.nps.gov/inde/playourvisit/independencehall.htm. Chestnut Street, between Fifth and Sixth streets, 215.965.2305. **Map 1, J5**

INDEPENDENCE NATIONAL HISTORICAL PARK—This park spans 20 city blocks (more than 55 acres) and includes Colonial sites like Independence Hall, Christ Church, Carpenters' Hall, Old City Hall and the Benjamin Franklin Museum, not to mention the Liberty Bell. The Independence Visitor Center at Sixth and Market streets distributes free tickets for Independence Hall, as well as maps and brochures in several languages. www.nps.gov/inde. 215.965.2305. **Map 1, K5**

LIBERTY BELL CENTER—The 2,080-pound bell with its famous crack rang on July 8, 1776 to announce the first public reading of the Declaration of Independence. These days, the world's most famous bell is preserved here across from Independence Hall. Free. Daily 9 am-5 pm. www.nps.gov/inde. Sixth and Market streets, 215.965.2305. **Map 1, J5**

OLD CITY HALL—Check out the building that was constructed to be Philadelphia's second City Hall; from the time it was completed it served as the home of the U.S. Supreme Court from 1791 to 1800, when it—and the nation's capital—moved to Washington. John Jay was Chief Justice here. Today's visitors can explore a restored courtroom. The Liberty Bell stands right outside. Free. Daily 9 am-5 pm. www.nps.gov/inde/playourvisit/old-city-hall.htm. Fifth and Chestnut streets, 215.965.2305. **Map 1, K5**

PHILADELPHIA ZOO—America's first zoo is a Victorian-landscaped, 42-acre area housing more than 1,300 animals in naturalistic habitats. Attractions include the Zooballoon (offering rides up to 400 feet with citywide views for an extra fee), a children's zoo, a butterfly habitat and more. \$16-\$23. Daily 9:30 am-5 pm. www.philadelphiazoo.org. 3400 W. Girard Ave., 215.243.1100. **Map 1, C2**

PHILADELPHIA'S MAGIC GARDENS—Created by mosaic artist Isaiah Zagar, this mesmerizing, maze-like "garden" is actually an outdoor installation complemented by indoor gallery space that was built from glass and ceramic fragments, discarded wheels, bottles and other ephemera. \$5-\$10. W-M 11 am-6 pm. www.phillymagicgardens.org. 1020 South St., 215.733.0390. **Map 1, I7**

U.S. MINT—More than just the site where money is made, the U.S. Mint is also a museum where visitors can watch the production process and interact with audio/visual stations on a self-guided tour. Gift shop. Free. M-Sa 9 am-4:30 pm. www.usmint.gov. 151 N. Independence Mall East, 215.408.0112. **Map 1, K4**

Historic Homes

BETSY ROSS HOUSE—The Colonial-style historic home of America's famous flag maker features period furnishings and Betsy Ross' own personal belongings, plus an upholstery shop and special exhibitions. "Meet Phillis the Laundress," all month; "Historic Chocolate Making Demonstrations," selected dates through Dec. 31. \$4-\$7. Daily 10 am-5 pm. www.historicphiladelphia.org. 239 Arch St., 215.629.4026. **Map 2, D3**

DECLARATION HOUSE (GRAFF HOUSE)—This reconstruction of the house where Thomas Jefferson wrote the Declaration of Independence features exhibits and a short film on the drafting of the historic document. Free. Call for hours. www.nps.gov/inde. 701 Market St., 215.965.7676. **Map 2, A5**

FAIRMOUNT PARK HOUSES—These 18th- and 19th-century mansions with period furnishings are considered some of the finest examples of early American homes. Tours are offered by the Park House Guides. \$5-\$8, children (ages 6-12) free. www.parkcharms.com. Lemon Hill, Sedgley and Lemon Hill drives, 215.232.4337; Mount Pleasant, Mount Pleasant Drive, 215.763.8100; Laurel Hill, Randolph and East Edgely drives, 215.235.1776; Woodford, 33rd and West Dauphin streets, 215.229.6115; Strawberry Mansion, Strawberry Mansion Drive, 215.228.8364; Cedar Grove, Lansdowne and Cedar Grove drives, 215.763.8100; Sweetbriar, Sweetbriar Drive, 215.222.1333.

Historic Religious Sites

CATHEDRAL BASILICA OF SAINTS PETER AND PAUL—Opened in 1864 and designed by architect Napoleon LeBrun, this majestic domed cathedral is modeled after the Lombard Church of St. Charles (San Carlo al Corso) in Rome. Visitors can admire the Roman-Corinthian architecture, the impressive copper dome and the breathtaking interior. Cathedral Basilica ambassadors are available during open hours to assist visitors and give tours. M-F 7:30 am-5 pm, Sa 9 am-6:30 pm, Su 8 am-7:30 pm. www.cathedralphila.org. 18th Street and Benjamin Franklin Parkway, 215.561.1313. **Map 1, G4**

CHRIST CHURCH—Many founding fathers prayed at this Episcopal church, founded in 1695. Services: Su 9 am and 11 am. Open M-Sa 9 am-5 pm, Su 1 pm-5 pm. Free, but \$5 donation suggested. www.christchurchphila.org. Second Street, between Market and Arch streets, 215.922.1695. **Map 1, K5**

CHRIST CHURCH BURIAL GROUND—Benjamin Franklin rests at this Colonial-era cemetery—his grave is visible through the gate at Fifth and Arch streets. Other notables include four signers of the Declaration of Independence. \$2, children

NLM NATIONAL LIBERTY MUSEUM
321 Chestnut St., Philadelphia, PA 19106
Hours: 10am-5pm, seven days a week
215-925-2800 • www.libertymuseum.org

Discover Philadelphia's "Hidden Gem"

21-ft. "Flame of Liberty" by Dale Chihuly

Great Museum Store too!

Independence Seaport Museum
211 S. Columbus Blvd.
Philadelphia, PA 19106
215-413-8655

Open year round for family fun! Check out:

new year's eve fireworks
Sunday, December 31
phillyseaport.org/nye

parade of lights
Saturday, December 9
phillyseaport.org/lights

what. when. where.

The new travel website from Where Magazine > wheretraveler.com



(ages 5-16) \$1. Guided tours depart 11 am-3:30 pm daily (weather permitting); \$7, youth (ages 5-16) \$3, groups \$30. M-Sa 10 am-4 pm, Su noon-4 pm. www.christchurchphila.org. Fifth and Arch streets, 215.922.1695. **Map 1, K4**

CONGREGATION MIKVEH ISRAEL—Founded in 1740, this synagogue houses the oldest Jewish congregation in Philadelphia and the second-oldest congregation in the United States. Archives and tours by appointment. Call for hours. www.mikvehisrael.org. 44 N. Fourth St., 215.922.5446. **Map 2, C4**

Libraries/Cultural Centers

FREE LIBRARY OF PHILADELPHIA: CENTRAL LIBRARY—Holdings here run the gamut from 4,000-year-old clay tablets to a collection of orchestral music that numbers more than 13,000 compositions and, of course, lots of books. Author events are frequent, as notable writers often make this a stop on national book tours. M-Th 9 am-9 pm, F till 6 pm, Sa till 5 pm, Su 1-5 pm. www.freelibrary.org. 1901 Vine St., 215.686.5322. **Map 1, G3**

THE ROSENBACK OF THE FREE LIBRARY OF PHILADELPHIA—Housed inside two beautiful townhouses on one of Philadelphia's most charming streets, the Rosenbach offers changing exhibitions and programs inspired by its remarkable collection of rare books, manuscripts, and fine and decorative art. "Gothic Monsters, Modern Science," through Feb. 11, 2018. \$5-\$10. Tu and F noon-5 pm, W-Th noon-8 pm, Sa-Su noon-6 pm. www.rosenbach.org. 2008-2010 Delancey Place, 215.732.1600. **Map 1, G6**

Special Interest Museums

THE AFRICAN AMERICAN MUSEUM IN PHILADELPHIA—This museum is the first built by a major United States city to house and interpret the life and work of African-Americans. "Gardens of the Mind: Echoes of the Feminine View," through Jan. 16, 2018. \$10-\$14. Th-Sa 10 am-5 pm, Su noon-5 pm. www.aampmuseum.org. 701 Arch St., 215.574.0380. **Map 1, J4**

AMERICAN TREASURE TOUR—Guides take visitors on a tram ride through the museum to explore an extensive collection of Americana, from antiques to pop culture items. General admission Th-Sa 10 am-3 pm. \$12.50, children (ages 3-12) \$5, under 3 free. By reservation only: Custom tours (4+ people) M-F; Group tours (15+) M-Sa. Check website for details. www.americantreasuretour.com. 122 Mill Road, Oaks, Pa., 866.970.8687.

BENJAMIN FRANKLIN MUSEUM—Part of Independence National Historical Park, the Benjamin Franklin Museum explores the life and legacy of this notable figure from American history. Visitors see artifacts, computer animations and interactive displays. \$5, youth (ages 4-16) \$2. Daily 9 am-5 pm. www.nps.gov/inde. Market Street between Third and Fourth streets, 215.965.2305. **Map 1, K5**

DEPACE SPORTS MUSEUM—This museum houses rare items such as the trunks worn by Muhammad Ali and Joe Frazier during their 1971 boxing match, a Babe Ruth road jersey c.1927-1929 and the School Sisters of Notre Dame Honus Wagner T-206 card. Free (donations suggested). Tu-Th noon-5 pm and Fri-Sa noon-9 pm. www.depacemuseum.com. 765 Haddon Ave., Collingswood, N.J., 856.833.5133.



THE FRANKLIN INSTITUTE—The city's celebrated, family-friendly science museum explores the history and future of science through hands-on exhibits such as "Your Brain," "Changing Earth," "Electricity" and even a walkthrough "Giant Heart." IMAX theater. "Terra Cotta Warriors," **through March 4, 2018**. \$20, children (ages 3-11) \$16. IMAX add on \$6. See website for special exhibition and escape room pricing (advance purchase recommended). Daily 9:30 am-5 pm. www.fi.edu. 222 N. 20th St., 215.448.1200. **Map 1, G4**

INDEPENDENCE SEAPORT MUSEUM—Located on Penn's Landing, this sprawling maritime museum offers interactive exhibits and an operational boat workshop. Outside, visitors tour the decks and depths of the cruiser "Olympia" and the World War II submarine "Becuna." \$12-\$16. Daily 10 am-5 pm. www.phillyseaport.org. 211 S. Columbus Blvd., 215.413.8655. **Map 1, L6**

MUMMERS MUSEUM—Learn about Philadelphia's colorful New Year's tradition as you strut and twirl through Mummies exhibits and demonstrations. Collection includes memorabilia and the Mummies' trademark elaborate costumes, some of which date from the early 1900s. Donation suggested. W-Sa 9:30 am-4 pm. www.mummersmuseum.com. 1100 S. Second St., 215.336.3050. **Map 1, K8**

MUSEUM OF THE AMERICAN REVOLUTION—There is no doubt that Philadelphia tells a compelling story about the birth of a new nation, and the recent unveiling of this museum delves into it. Inside a \$125 million Robert A.M. Stern-designed building, a comprehensive experience follows the journey of America's founders and attempts to broaden the idea of who exactly that founding generation was. \$12-\$19. Daily 10 am-5 pm. www.amrevmuseum.org. 101 S. Third St., 215.253.6731. **Map 2, D6**

NATIONAL CONSTITUTION CENTER—Located just two blocks from Independence Hall and the Liberty Bell, this dynamic and modern museum tells the story of the U.S. Constitution through interactive and multimedia exhibits. \$11-\$14.50. M-F 9:30 am-5 pm, Sa 9:30 am-6 pm, Su noon-5 pm. www.constitutioncenter.org. 525 Arch St., Independence Mall, 215.409.6600. **Map 1, K4**

NATIONAL LIBERTY MUSEUM—Celebrate America's heritage of freedom and achievement at galleries honoring local, national and international defenders of liberty. Exhibits include "Welcome to Liberty Gallery," "Voyage to Liberty" and "Heroes From Around the World." Don't miss the work of glass artist Dale Chihuly. \$2-\$7; \$15 family pass. Daily 10 am-6 pm. www.libertymuseum.org. 321 Chestnut St., 215.925.2800. **Map 1, K5**

NATIONAL MUSEUM OF AMERICAN JEWISH HISTORY—At this Smithsonian affiliate, visitors explore the history of Jews in America through exhibits featuring more than 1,000 artifacts, plus films and interactive displays that allow visitors to contribute their own stories. "Leonard Bernstein: The Power of Music," **through Sept. 2, 2018**. \$13-\$15, children under 13 free. W-F 10 am-5 pm, Sa-Su till 5:30 pm. www.nmajh.org. Corner of 5th and Market streets, 215.923.3811. **Map 1, K5**

THE PHILADELPHIA HISTORY MUSEUM AT THE ATWATER KENT—The official history museum of Philadelphia features eight newly renovated galleries on two floors, exhibiting items from the museum's vast holdings of more than 100,000 objects, including such gems as the wampum belt given to William Penn by the Lenape people, Joe

Frazier's Everlast boxing gloves, and the world's largest walkable map of Philadelphia. "City Image: Philadelphia in Photographs," "Community History Gallery: Folk Arts for Social Change," **through Dec. 31**. \$6-\$10. Tu-Sa 10:30 am-4:30 pm. www.philadelphiahistory.org. 15 S. Seventh St., 215.685.4830. **Map 1, J5**

PLEASE TOUCH MUSEUM—Located in the gorgeously renovated Memorial Hall in Fairmount Park, this children's museum is dedicated to enriching the lives of youngsters by providing learning opportunities through play. Hands-on experiences include "Wonderland" (hedge maze and Hall of Mirrors), "Flight Fantasy" (build and launch rockets), "River Adventures" (mini Schuylkill River). "Daniel Tiger's Neighborhood: A Grr-ific Exhibit," **through Jan. 15, 2018**. \$19. M-Sa 9 am-5 pm, Su 11 am-5 pm. www.pleasetouchmuseum.org. 4231 Avenue of the Republic, 215.581.3181. **Map 1, B4**

Observatories & Lookouts

ONE LIBERTY OBSERVATION DECK—This breathtaking site offers 360-degree vistas of the entire city and beyond. On clear days, views extend to New Jersey and Delaware to the east, past University City to the west, down to Philly's stadiums to the south, and up to the neighboring suburbs to the north. High-tech touch-screens let visitors zoom in. Guided tours (free with admission) M-F at 11 am and 3 pm, Sa-Su at 11 am, 1 pm and 3 pm, plus self-guided tours. \$9-\$19. Daily 10 am-8 pm. www.phillyfromthetop.com. 1650 Market St., 215.561.3325. **Map 1, H5**

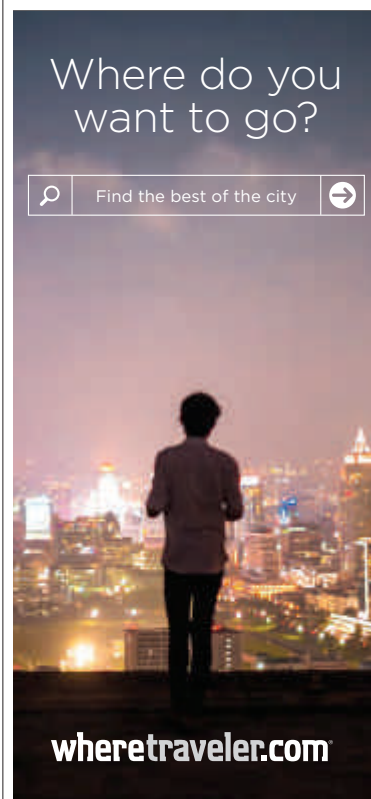
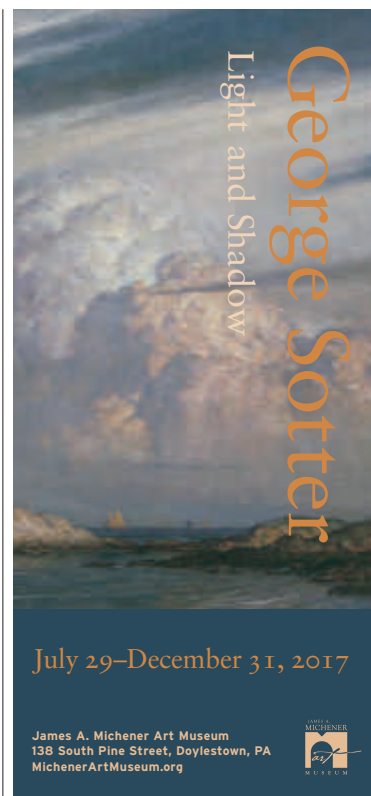
TOP OF THE TOWER—Floor-to-ceiling windows and open-air patios offer a bird's eye view of the Cathedral Basilica of Saints Peter and Paul, Logan Square, Eakins Oval and the Benjamin Franklin Parkway. A top-notch dining program also makes the tower a popular spot for brunch. www.topofthetower.com. 1717 Arch St., 215.567.8787.

Parks & Nature

THE FAIRMOUNT PARK HORTICULTURE CENTER & CENTENNIAL ARBORETUM—Built in 1979 on the site of the former Horticultural Hall, an 1876 Exposition building, this center holds indoor and outdoor splendors including ponds, Japanese maples, and sculptures of poets and musicians. Free (donations accepted). Greenhouses: Daily 9 am-3 pm. Arboretum: Daily 9 am-5 pm. www.fairmountparkconservancy.org. 100 N. Horticultural Drive, 215.685.0096.

LONGWOOD GARDENS—This horticultural paradise has 1,050 acres of flora, plus 20 indoor gardens, the "Nature's Castles" tree house exhibit and live performances. "A Longwood Christmas," **through Jan. 7, 2018** (till 10 pm). \$12-\$23. Daily 9 am-6 pm. www.longwoodgardens.org. 1001 Longwood Road, Kennett Square, Pa., 610.388.1000.

SISTER CITIES PARK—This green space offers diverse activities and quiet respite on the Benjamin Franklin Parkway. Families explore the Children's Discovery Garden, grab a bite to eat at the cafe, or just sit and relax. You can also rent and sail boats in the pond and splash in the fountain in warmer months. Daily 6 am-1 am. www.ccdparks.org/sister-cities-park. 18th Street and Benjamin Franklin Parkway, 215.440.5500. **Map 1, G4**



Dining | December



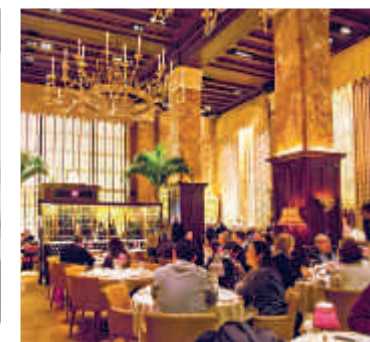
La Colombe Coffee Roasters

This hometown java hub has been brewing up its single origins and blends since 1994. Since then, the company has expanded with cafes in cities on both coasts. The Fishtown HQ (above) offers a rustic, yet welcoming space for hand-selected brews and pastries. 1335 Frankford Ave., 267.479.1600.



Bud & Marilyn's

Chef Marcie Blaine Turney grew up hanging around her grandparents' restaurant. After 20 years in the dining world, she decided to recreate her childhood refuge with this Mad Men-esque eatery. Today, diners dig into comfort in crowd-pleasing dishes like fried chicken with house-made hot sauce. 1234 Locust St., 215.546.2220 **Map 1, I6**



Butcher and Singer

Stephen Starr's stunning chophouse near Rittenhouse Square transports guests to a bygone era, when dining out was a grand affair. Soaring gilded ceilings, cozy leather booths and gorgeous chandeliers create a luxurious vibe for classic cocktails and Starr's top-notch steakhouse fare. 1500 Walnut St., 215.732.4444 **Map 1, H5**

Avenue of the Arts

AQIMERO—New Latin. Inside the lobby of the iconic Ritz-Carlton Philadelphia, across from City Hall, acclaimed chef Richard Sandoval serves up everything from sushi and ceviche to sustainably caught seafood creations with a Latin accent. B & D (Daily), L (M-F). www.richardsandoval.com/aqimero/. 10 Avenue of the Arts, 215.523.8200. \$\$\$ **Map 1, H5**

JET WINE BAR—Wine Bar. This smart wine bar offers an intriguing list of more than two dozen global vintages by the glass. Find Argentinean *bonarda* and French *gros manseng*. Pair your choice with tasty bites such as spiced carrots, a fig-and-fennel tart or an artisanal cheese plate. B, L, D (Daily). www.jetwinebar.com. 1525 South St., 215.735.1116. \$\$ **Map 1, H7**

MCCORMICK & SCHMICK'S—Seafood. This bustling 290-seat establishment brings the flavors of the Pacific Northwest to Philadelphia, plus draft beers, single malts and Northwest wines. For a more intimate meal, head upstairs to cozy booths. L, D (Daily). www.mccormickandschmicks.com. 1 S. Broad St., 215.568.6888. \$\$\$ **Map 1, H5**

MORTON'S, THE STEAKHOUSE—Steak. An extensive wine selection is just a bonus of this signature Chicago steakhouse experience. Wet-aged prime beef broiled Midwestern-style makes for hearty, large portions, but also try pork, lamb and veal chops, as well as tasty seafood offerings. D (Daily). www.mortons.com. 1411 Walnut St., 215.557.0724. \$\$\$ **Map 1, H5**

SO CREPE—French. French owners Frederic Elmalek and Fabrice Goutte batter up authentic sweet and savory crepe varieties and make everything in house, from the whipped cream to the salted butter caramel. B, L, D (Daily). www.socrepe.com. 1506 South St., 267.761.9310. \$ **Map 1, H7**

TAVERNON BROAD—American. Head beneath the Bellevue building for burgers and beers, plus the game on one of the restaurant's 34 HDTVs. Space for private parties available. L, D (Daily). www.tavernonbroad.com. The Bellevue, 200 S. Broad St., 215.546.2290. \$\$ **Map 1, H5**

VALANNI—Mediterranean. Sleek yet laid-back, this neighborhood spot is a few blocks from the Avenue of the Arts. Tuck into modern Medi-Latin entrees and appetizers like spicy pulled chicken empanadas, lamb sliders and paella. D (Daily), Br (Su). www.valanni.com. 1229 Spruce St., 215.790.9494. \$\$\$ **Map 1, I6**

VOLVER—American. Volver is Spanish for "to return," and with this high-class restaurant, chef Jose Garces does just that, revisiting his favorite culinary experiences from around the world. The diverse, seasonal, and often locally sourced menu features some of the most innovative dishes in the city. D (W-Su). www.volverrestaurant.com. 300 S. Broad St., 215.670.2303. **Map 1, H6**

There's a lot more going on this December. Visit us online: wheretraveler.com

XIX (NINETEEN)—American. For a special evening, take the elevator to the 19th floor of the Hyatt Philadelphia at The Bellevue. Settle in beneath the restaurant's spectacular pearl chandelier, or enjoy a meal in the more relaxed cafe space. L (M-F), D (Daily), Br (Su). www.nineteenrestaurant.com. Broad and Walnut streets, 215.790.1919. \$\$\$ **Map 1, H5**

Center City & Rittenhouse

24—Italian/Pizza. Antipasti, pizza and pasta dishes are the focus at this Jose Garces eatery along the Schuylkill Banks. Pizzas come with classic and unconventional toppings like lamb sausage and clam. Apart from the wood-fired fare, look for an extensive wine list and a daily "Aperitivo" happy hour with drink specials, snacks and small plates. L (M-F), D (Daily), Br (Sa-Su). www.24philly.com. 2401 Walnut St., 215.333.3331. \$ **Map 1, F5**

BAOLOGY—Taiwanese. Husband-and-wife team, Judy Ni and Andy Tessier's first restaurant serves up fast-casual street food with a roster of ingredients that changes with the season. On the menu, find Ni's childhood favorites the way her grandmother made: Berkshire pork, shrimp and spinach potstickers; Taiwanese free-range fried chicken; wild-caught shrimp ruen bings (like a mini burrito). L (M-F), D (W-F). No phone. www.baology.com. 1829 John F. Kennedy Blvd. \$ **Map 1, G4**

(LEFT & RIGHT) © M. FISCHETTI FOR VISIT PHILADELPHIA®; (CENTER) ©STEAM PIPE TRUNK DISTRIBUTION VENUE FLICKR; CREATIVE COMMONS

➔ **ORIGIN STORY** Legend has it that Pat Olivieri, of Pat's King of Steaks (page 34), invented the cheesesteak, which caught favor with cabbies, who then spread the word.



BAR BOMBÓN—Vegan. Like the rest of the dishes here, the Puerto Rican empanadas and Venezuela-influenced arepas include only veggies. If time is tight, order tacos and stuffed plantains to go from the takeout window. L, D (Daily). www.barbombon.com. 133 S. 18th St., 267.606.6612. **\$ Map 1, G6**

DAVIO'S NORTHERN ITALIAN STEAKHOUSE—Steak. On the second floor of the historic Provident Bank Building, Davio's serves prime Brandt dry-aged steaks, veal chops and seafood beneath soaring 24-foot ceilings. B, L (M-F), D (Daily), Br (Su). www.davios.com. 111 S. 17th St., 215.563.4810. **\$\$\$ Map 1, G5**

DIZENGOFF—Israeli. Hummus is key at this quick-service establishment. The menu is simple: five variations of hummus rotate daily—think lamb, cabbage, chicken and beets—and come with pita, Israeli salad and pickles. Inside, picnic tables fill the cozy space, while outside, prime seats along Sansom Street make for great people watching in good weather. L, D (Daily). www.dizengoffphilly.com. 1625 Sansom St., 215.867.8181. **Map 1, H5**; Whole Foods, 2101 Pennsylvania Ave. **Map 1, G3**

ERAWAN THAI CUISINE—Thai. This inviting BYOB offers tasty and authentic dishes with fresh ingredients. A friendly staff helps guests select spices to fit specific tastes. BYOB. L, D (T-Su). www.erawanthaiphilly.com. 123 S. 23rd St., 215.567.2542. **\$ Map 1, F5**

FINE PALATE—Global American. This fine-dining establishment focuses on globally inspired fare using high-quality ingredients. Enjoy fried oysters at brunch, banh mi and ramen at lunch, and pork belly, paella and mac and cheese with crab at dinner. D (Tu-Sa), Br (Sa-Su). www.finepalategroup.com. 231 S. 15th St., 267.318.7971. **Map 1, H6**

GOLDIE—Middle Eastern. From James Beard winner Michael Solomonov and Steve Cook, owners of lauded Zahav, comes this fast-casual concept with a simple menu: falafel, fries and tahina shakes. Located above Rooster Soup Company. L, D (Daily). www.goldiefalafel.com. 1526 Sansom St., 267.239.0777. **\$ Map 1, H5**

R2L—American. On the 37th floor of Two Liberty Place, Chef Daniel Stern gives modern twists to traditional American flavors. The stunning skyline views make R2L one of Philly's most spectacular dining destinations. D (Daily). www.r2lrestaurant.com. 50 S. 16th St., 37th floor, 215.564.5337. **\$ Map 1, H5**

SEAFOOD UNLIMITED—Seafood. Located just off of Rittenhouse Square, this intimate neighborhood favorite specializes in simply prepared fresh fish and seafood selections. D (M-Sa). www.seafoodunlimited.com. 270 S. 20th St., 215.732.3663. **Map 1, G6**

SUGA BY SUSANNA FOO—Chinese. Two-time James Beard-winning chef Susanna Foo's venture uses farm-fresh ingredients with fine-dining techniques to produce such dishes as tea-smoked Peking duck breast with farro risotto and Mandarin pork pasta. L, D (Daily), Br (Sa-Su). www.sugabyfoo.com. 1720 Sansom St., 215.717.8968. **Map 1, G5**

URBAN FARMER—Steak House. On historic Logan Square, this modern steakhouse takes pride in using locally sourced ingredients in authentic and straightforward preparations. B, L, D (Daily), Br (Sa & Su). www.urbanfarmerphila.com. 1850 Benjamin Franklin Parkway, 215.963.2788. **Map 1, G4**

Chinatown

NAN ZHOU HAND DRAWN NOODLE HOUSE—Chinese. The fresh soups and handmade noodles alone make Nan Zhou a must-stop Chinatown destination. BYOB, cash only. L, D (Daily). www.nanzhounoodlehouse.com. 1022 Race St., 215.923.1550. **\$ Map 1, J4**

VIETNAM RESTAURANT—Vietnamese. This beloved hole-in-the-wall eatery located in the heart of Chinatown serves authentic Vietnamese cuisine at accessible prices. On the third floor is Bar Saigon, modeled after 1930s Saigon dance clubs, where guests sing karaoke while sipping delicious cocktails. L, D (Daily). www.eatatvietnam.com. 221 N. 11th St., 215.592.1163. **\$ Map 1, I4**

Convention Center

HARD ROCK CAFE—American. Philly's outpost of the international phenomenon is located in the historic Reading Terminal train station, steps from the Convention Center and a few blocks from the historic district. Inside, the restaurant is filled with its trademark rock memorabilia, plus a gift shop of Hard Rock-branded souvenirs. On the menu, find favorites like "Legendary Burgers," steaks, salads and sandwiches. L, D (Daily). www.hardrock.com. 1113-31 Market St., 215.238.1000. **\$ Map 1, I4**

MOLLY MALLOY'S—Pub/Bar. Nestled in the heart of the historic Reading Terminal Market, this airy gastropub from the folks behind Iovine Brothers produce serves seasonal fare from chef Bobby Fisher and pours craft beers, 24 of which are on draft. B, L, D (Daily). www.mollymalloyshilly.com. Reading Terminal Market, 1136 Arch St., 267.525.1001. **\$ Map 1, I4**

READING TERMINAL MARKET—International. Founded in 1893, Reading Terminal Market has evolved into one of Philadelphia's major dining destinations, a food mecca where you can taste international and local specialties, including cheesesteaks and Pennsylvania Dutch treats. B, L, D (Daily). www.readingterminalmarket.org. 12th and Arch streets, 215.922.2317. **\$ Map 1, I4**

East Passyunk Avenue

FOND—American. This intimate contemporary American restaurant is flecked with touches of chef Lee Styer's classic French training. The refined, seasonal menu might include such gems as Thai curry escargot, seared foie gras with cranberries or beef short ribs with Bordelaise sauce. D (Tu-Su). www.fondphilly.com. 1537 S. 11th St., 215.551.5000. **\$ Map 3, D3**

PARADISO—Italian. As a key player in the burgeoning East Passyunk Avenue dining scene, Paradiso brings fresh ingredients to mouth-watering dishes. Look for hand-rolled gnocchi, Hudson Valley duck breast and whole-roasted branzino. L (Tu-F), D (Tu-Su). Sundays BYOB with no corkage fee. www.paradisophilly.com. 1627 E. Passyunk Ave., 215.271.2066. **\$ Map 3, D3**

STARGAZY—British. The lunch and supper (read: early dinner) crowd here digs into hearty, regional British cuisine. Pie and mash is a staple of the menu, and flavors run the gamut from traditional beef and onion to daily specials. Other house-made noshes include sausage rolls, Cornish pasties, and banoffee pie. 1838 E. Passyunk Ave., 215.309.2761. **\$ Map 3, D3**

TOWNSEND—French. From broiled oysters to sauteed sweetbreads and lamb en cocotte, wine and food offerings follow the seasons at chef-owner Townsend Wentz's eponymous fine-dining spot, which is also known for masterful food and wine pairings. If you can't get a table, try the bar, where the full dinner menu is also available. D (W-M). www.townsendrestaurant.com. 1623 E. Passyunk Ave., 267.639.3203. **\$ Map 3, D3**

Manayunk

BOURBON BLUE—American. This hotspot features New American cuisine with a New Orleans accent. Dig into favorites like Southern fried chicken, jambalaya and country-style ribs. On weekends, the Canal Lounge offers live entertainment. D (Daily), Br (Sa-Su). www.bourbonblue.com. 2 Rector St., 215.508.3360. **\$**

THE JUICE MERCHANT—Health Food. Using 100 percent organic ingredients, The Juice Merchant is the go-to place for the health conscious. Looking to make health food convenient, the shop has a full menu of cold-pressed juices, smoothies and vegan salads and sandwiches. B, L, D (M-Sa) www.thejuicemerchant.com. 4330 Main St., 215.483.8888. **\$**

OLD EAGLE TAVERN—Tavern. One of the best-kept secrets in Manayunk, this Old World-style tavern specializes in reinvented bar fare and an extensive beer collection, including excellent crafts, 11 rotating drafts and 60+ bottles. D (Daily), Br (Sa-Su). www.oldeaglebakeshop.com. 177 Markle St., 215.483.5535. **\$**

Midtown Village

BRÜ CRAFT & WURST—German. An indoor bierhall and wursthaus serves up classic dishes, including pork belly, weiner schnitzel, and of course, assorted wurst. The bierhall pours 39 German domestic and import drafts on tap. For \$5, purchase a Haus key from a server or bartender and pour your own from an iPad-controlled bier wall, where brews cost as little as 30 cents per ounce. L, D (Daily) www.bruphilly.com. 1318 Chestnut St., 215.800.1079. **\$ Map 1, I5**

CHEU NOODLE BAR—Asian. This cozy spot focuses on noodle bowls with a variety of ingredients. The miso ramen bowl with pork shoulder, soft egg and black garlic is particularly popular. Small plates include black garlic wings and pork pizza dumplings. L, D (Daily). www.cheunoodlebar.com. 255 S. 10th St., 267.639.4136. **\$-\$\$ Map 1, I6**

DOUBLE KNOT—Pan Asian. The main floor of this two-story restaurant by Michael Schulson (of Sampan fame) pours Elixir Coffee Roasters drinks and offers pastries, plus fast-casual Vietnamese fare during the day, with drinks from a full-service bar at night. Downstairs, find a cozy Japanese-style izakaya serving small plates, like tempura shrimp tacos, sushi and bao buns filled with duck scrapple. B, L, D (M-Su). www.doubleknotphilly.com. 120 S. 13th St., 215.631.3868. **\$-\$\$\$ Map 1, I5**

INDEBLUE—Indian. Take your taste buds on a journey at this neighborhood hot spot, where brunch features live sitar and tabla performances. Go for the maharaja cheese board and shrimp and crab moilee, or try other traditional dishes, plus brunch classics with an Indian spin. L (M-F), D (Daily), Br (Sa-Su). www.indebluerestaurant.com. 205 S. 13th St., 215.545.4633. **\$ Map 1, I5**

THIS IS HOW IT'S DONE



STEAKS & HOAGIES

215.928.1911 ♦ 4TH & SOUTH ST.

PHILADELPHIA ♦ JIMSSOUTHSTREET.COM

[f JIMSSOUTHSTREET](https://www.facebook.com/jimssouthstreet) [@JIMSSOUTHSTREET](https://www.twitter.com/jimssouthstreet) [i JIMSSOUTHSTREET](https://www.instagram.com/jimssouthstreet)

OPEN EVERYDAY TIL LATE



SAMPAN—Pan-Asian. This 95-seat gem showcases Chef Michael Schulson's passion for Asian flavors and exquisite presentations. Mix and match from the array of reasonably priced small plates at dinner and happy hour. Head around back to the Grafitti Bar for cocktails. D (Daily). www.sampanphilly.com. 124 S. 13th St., 215.732.3501. **\$ Map 1, I5**

STRANGELOVE'S—American. This 20-tap, two-story craft beer destination also serves up inspired vegetarian, vegan and omnivore-friendly fare. L, D (Daily). www.strangelovesbeerbar.com. 216 S. 11th St., 215.873.0404. **\$ Map 1, I5**

TREDICI ENOTECA—Mediterranean. This lovely dining room focuses on small plates like bacon-wrapped dates stuffed with manchego and blue cheese, and chicken meatballs. Also on the menu, find a raw bar plus spinach gnocchi with butternut squash and Moroccan-spiced ribs, as well as an extensive wine list and house-made cocktails. L, D (Daily). www.tredicinenoteca.com. 114 S. 13th St., 267.928.2092. **\$ Map 1, I5**

Northern Liberties & Fishtown

CAKE LIFE BAKE SHOP—Bakery. The duo behind this all-day bake shop has a "Cupcake Wars" victory under their belts. In addition to top-notch cupcakes, look for sweet and savory pastries and cakes (by the slice). The cafe also serves Rival Bros. coffee and has a BYOB policy. B, L (Tu-Su), D (Tu-Sa). www.cakelifebakeshop.com. 1306 Frankford Ave., 215.278.2580. **\$**

FRANKFORD HALL—German. This open-air German beer garden may be the liveliest spot in Stephen Starr's empire. Counter service, long communal tables and alfresco ping-pong create a down-to-earth backdrop for enjoying huge steins of traditional German and craft beers. Fill up on casual fare like sauerkraut, schnitzel, spatzle, bratwurst, weisswurst and kasekrainer. L (Sa-Su), D (Daily). www.frankfordhall.com. 1210 Frankford Ave., 215.634.3338. **\$ Map L1**

FRONT STREET CAFE—American. Health-conscious, on-trend dishes are on the menu at this light-filled, rustic-chic spot that aims to satisfy all needs with a sit-down restaurant, coffee shop, juice/smoothie bar, European-style beer garden, outdoor terrace and even two full bars. Try acai breakfast bowls, turkey burgers, kale Caesar salads, tostada grain bowls, blackened culotte steak and spaghetti squash with lentil meatballs. B, L, D (Daily). www.frontstreetcafe.net. 1253 N. Front St., 215.515.3073. **\$-\$\$**

LOVE & HONEY FRIED CHICKEN—American. Todd and Laura Lyons' temple to fried chicken offers locally sourced, humanely raised and processed birds (read: no antibiotics or hormones). The result is back-to-basics good food, with fixins including mac and cheese, cornbread muffins and potato salad. Save room for pie (sweet potato, apple, flavor of the month). L, D (W-Su). www.loveandhoneyfriedchicken.com. 1100 N. Front St., 215.789.7878. **\$ Map 1, L1**

PIZZA BRAIN—Pizza. This socially and environmentally aware pizza parlor claims the world's first pizza museum and an entry in the Guinness Book of World Records for the largest stock of pizza memorabilia. The restaurant also features vegan options and delivery. L, D (Daily). www.pizzabrain.org. 2313 Frankford Ave., 215.291.2965. **\$**



WM. MULHERIN'S SONS—Italian. Set in a restored 1890s whiskey blending and bottling facility, Wm. Mulherin's Sons serves up hearty pastas, wood-fired pizzas and strong drinks. The restaurant also offers three rooms: a bar, a dining room with a board-formed concrete fireplace and a second dining room featuring an open kitchen with a wood-fired oven and grill where you can watch the action while dining. D (Daily). www.wmmulherinssons.com. 1355 North Front St., 267.753.9478. \$\$\$

Old City

CAMPO'S—Cheesesteaks. Ambrose Campo opened his namesake butcher shop in 1947. Now located in Old City on America's Most Historic Mile, this homegrown deli and Food Network star dishes up roast pork, meatballs, and of course, cheesesteaks to appreciative crowds. It's even the official cheesesteak supplier to the Phillies, Flyers and 76ers. Also here, local beers, plus vegan and gluten-free dishes. L & D (Daily). www.camposdeli.com. 214 Market St., 215.923.1000 \$ Map 1, K5

CITY TAVERN—American. At this reconstructed tavern used by delegates to the First and Second Continental Congresses, enjoy a Colonial-style meal by acclaimed chef Walter Staib. Visitors are also welcome to walk through to take in the history. L, D (Daily). www.citytavern.com. 138 S. Second St. at Walnut, 215.413.1443. \$\$ Map 1, K5

DINARDO'S FAMOUS SEAFOOD—Seafood. This family-owned seafood house is an Old City institution, serving up finger-licking steamed hard-shell crabs and sautéed garlic crabs since 1976. Grilled steaks, chicken and fresh pasta are also on the menu. L (M-Sa), D (Daily). www.dinardos.com. 312 Race St., 215.925.5115. \$\$\$ Map 1, K4


THE LITTLE LION—American. This upscale spot with a casual vibe pays homage to Alexander Hamilton (aka "Little Lion") and is housed in a historic building dating to 1847. On the menu, find Southern-influenced comfort food, a raw bar and an impressive list of beers and cocktails. There's also a kids' menu. L, D (Daily), Br (Sa-Su). www.thelittlelionphilly.com. 243 Chestnut St., 267.273.0688. \$ Map 1, K5

THE OLDE BAR—Seafood. This Jose Garces spot respects tradition with seafood and standouts like crab cake Benedict and Olde Bar fries with crab, lobster butter and oyster stout-cheddar fondue. D (Daily), Br (Sa-Su). www.theoldebar.com. 125 Walnut St., 215.253.3777. \$\$ Map 3, K5

WEDGE + FIG—American. Artisanal cheeses, crostini, paninis and salads make up the menu at this charming BYOB spot for light, tasty fare. Duck into the baker's alley for access to the tree-shaded patio in the back of the cafe. L (Tu-Su), D (Tu-Sa). www.wedgeandfig.com. 160 N. Third St., 267.603.3090. \$\$ Map 1, K4

Parkway District & Fairmount

THE BELGIAN CAFE—Belgian. At this pub, the rustic and understated interior betrays the ambitious menu, which offers an impressive selection of fresh PEI mussels and innovative vegan versions of favorites, including vegan BBQ wings and Korean-style BBQ seitan tacos. As for the brews, expect a dozen rare Belgian beers on tap and about 250 by the bottle. L, D (Daily). www.thebelgiancafe.com. 601 N. 21st St., 215.235.3500 \$ Map 1, F2



Specializing in California-style burritos featuring fresh ingredients in sumptuous portions at affordable prices.

Lunch and Dinner
BYOB

el fuego

723 Walnut Street • 215.592.1931
[Facebook.com/elfuegoburritosphilly](https://www.facebook.com/elfuegoburritosphilly)
www.elfuegophilly.com



Merry Christmas and Happy New Year

The First Thai Restaurant in Philadelphia
BYOB



3 COURSE LUNCH & DINNER SPECIALS AVAILABLE

Dine in • Take out • Closed Monday
Free Delivery (Limited Area)

Order online, special promotions and make reservation online

123 S. 23rd Street
215.567.2542

See our website for special promotions:
www.erawanphilly.com



VIETNAM RESTAURANT
Est. 1984

The Fine Art of Vietnamese Home Cooking



Vietnam Restaurant 221 North 11th St. Phila., PA 19107 215-692-1188	Vietnam Cafe 616 South 47th St. Phila., PA 19143 215-792-6386
---	---

Mon-Fri: 11:30 am - 10:30 pm
Sat-Sun: 11 am - 9:30 pm

Mon-Fri: 11:30 am - 9 pm
Sat: 11:30 am - 9:30 pm
Sun: 12 - 9 pm

www.eatatvietnam.com
Delivery available through tryvietnam.com

CHERRY STREET TAVERN—Pub/Bar. At this neighborhood constant since the early 1900s, everyone feels like a local. The warm, wood-paneled tavern is just a short stroll from the Benjamin Franklin Parkway and museum district. The hot roast beef sandwich with provolone cheese is a winner. L, D (Daily). www.cherrystreettavern.com. 129 N 22nd St., 215.561.5683. \$ Map 1, F4

LA CALACA FELIZ—Mexican. Bright murals adorn this cheery mod-Mex spot headed by Chef Timothy Spinner. With over 50 varieties of tequila and an extensive margarita menu, the adventurous imbibers will likely never get bored, especially with the added benefit of ingredients like moonshine and chili powder. D (Daily), Br (Su). www.lacalaca.com. 2321 Fairmount Ave., 215.787.9930. \$\$ Map 1, F2

LUCKY GOAT COFFEE HOUSE—Coffee House. This family-owned neighborhood gem pours coffee and inventive seasonal drinks made with La Colombe coffee and dishes up baked goods served with homemade cream cheese. B, L, D (Daily). www.luckygoatcoffeehouse.com. 888 N. 26th St., 215.978.4628. \$ Map 1, E2

SKYBRUNCH AT THE VISTA ROOM—American. Sunday brunch at this dining room located 50 stories above ground is served with panoramic views of the Benjamin Franklin Parkway and beyond. Explore six curated food stations for a flat fee and enjoy delicious themed cocktails. B, Br (Su). www.hiltonpennslanding.com. 1001 N. Delaware Ave., 215.717.3900. \$\$\$-\$\$\$\$ Map 1, L1

skybrunch.com. Top of the Tower, 1717 Arch St., 215.557.1999. \$\$\$ Map 1, G4

Penn's Landing & Waterfront

CHART HOUSE—Seafood. Waterfront views of Penn's Landing, the Delaware River and the Philadelphia skyline set a dramatic stage for updated classic steaks and seafood entrées, along with renowned prime rib specials. D (Daily), Br (Su). www.chart-house.com. 555 S. Columbus Blvd., 215.625.8383. \$\$ Map 1, L7

HUGO'S FROG BAR AND CHOP HOUSE—Steakhouse. Treat yourself to an authentic Chicago dining experience, which includes USDA Gibsons Prime Angus Beef as well as other favorites like fresh fish and seafood, salads and sandwiches. An extensive wine list, waterfront views and live entertainment add to the special vibe. Inside Sugar House Casino. www.sugarhousecasino.com/dining/hugo-s-frog-bar-chop-house. 1001 N. Delaware Ave., 215.717.3900. \$\$\$-\$\$\$\$ Map 1, L1

KEATING'S ROPE & ANCHOR, BAR + KITCHEN—Contemporary American. Spend an afternoon on the patio of Hilton's Penn Landing outpost, tucking into oak-smoked salmon or a New York strip steak while gazing out at the Delaware River. Inside, a buzzy bar pours hand-crafted cocktails to the tunes of a live band. B, L, D (Daily). www.hiltonpennslanding.com/keatings-rope-anchor.shtml. 201 S. Columbus Blvd., 215.521.6509. \$\$\$ Map 1, L5



LA PEG—French. This contemporary brasserie and beer garden is located inside the FringeArts building along the Delaware River Waterfront. The crowd-pleasing menu features dishes like beef tartare, steak frites, butternut squash soup and cheeseburgers. D (Daily), Br (Sa-Su). www.lapegbrasserie.com. 140 N. Columbus Blvd., 215.375.7744. \$\$ Map 1, L4

South Philly & Italian Market

AMERICAN SARDINE BAR—Pub/Bar. This resto-bar from the owners of the South Philly Tap Room offers a menu that highlights its craft beers (16 on tap) with hearty sandwiches and classic pub grub. L, D (Daily), Br (Su). www.americansardinebar.com. 1800 Federal St., 215.334.2337. \$

FEDERAL DONUTS—Sweets. Beard winner Michael Solomonov's little gem offers fresh cake donuts at 7 am, and then serves Korean-style fried chicken from noon until they run out. B, L (Daily). www.federaldonuts.com. 1219 S. Second St., 267.687.8258. \$ Map 3, F2; 1632 Sansom St., 215.665.1101. Map 1, H5

GENO'S STEAKS—Cheesesteaks. Geno's serves up classic steaks with Philly flair. The inevitable line provides time to figure out what to order; when you get to the counter, make it fast and simple. Cash only. B, L, D (Daily, 24 hrs.). www.genosteaks.com. 1219 S. Ninth St., 215.389.0659 \$ Map 3, E2

KEY TO THE CITY PRESENTED BY

where AND LAGOS

Congratulations to 2017 Key to the City winner Mimoza Xhori, Club Concierge of The Ritz-Carlton, Philadelphia.



aqimero
BY THE RITZ-CARLTON, PHILADELPHIA



LAGOS

Beam SUNTORY

PUNCHMEDIA

مراكش
MARRAKESH

East Coast's Premier Moroccan Restaurant



Enjoy an authentic, seven course Moroccan feast every evening beginning at 5:30 pm.
A variety of wines and spirits available.
Reservations suggested.

Group Lunches, Private Rooms,
And Belly Dancers on Fridays and Saturdays



517 S. Leithgow St. • Philadelphia, PA 19147
215-925-5929



GREEN EGGS CAFE—*American*. This restaurant with two locations is a favorite for mouth-watering breakfast and lunch dishes like smoked Atlantic salmon omelet, Belgian waffles and a variety of sandwiches and salads. Cash only. B, L, Br (Daily). www.greeneggscfe.net. 212 S. 13th St., 267.861.0314. \$ **Map 1**, H5; 1306 Dickinson St., 215.266.3447; 719 N. Second St., 215.922.3447.

JIM'S SOUTH STREET—*Cheesesteaks*. Since 1976, visitors and locals alike have been flocking to this temple to cheesesteak inside an Art Deco storefront on lively South Street. Hoagies, too. L & D (Daily). www.jimssouthstreet.com. 400 South St., 215.928.1911. \$ **Map 1**, K7

NINA'S TRATTORIA—*Contemporary Italian*. This supper club inside the Italian Market serves Sicilian family specialties, along with traditional and contemporary fare from regions including Abruzzo, Calabria and Tuscany. The feather-light gnocchi are among many must-tries on the menu. L (Sa-Su), D (Tu-Su). www.ninatrattoria.com. 910 S. 9th St., 215.574.9995. \$ **Map 1**, J8

PAT'S KING OF STEAKS—*Cheesesteaks*. Billed as the originator of the cheesesteak, this shop is a favorite that attracts fans from around the world. Local tip: Order "Whiz wit." B, L, D (Daily, 24 hrs.). www.patskingofsteaks.com. 1237 E. Passyunk Ave., 215.468.1546. \$ **Map 3**, E2

SABRINA'S CAFE—*American*. Get cozy in this family-owned neighborhood cafe, heralded for having one of the best brunches in town. BYOB. Hours vary by location. www.sabrinascfe.com. 910-912 Christian St., 215.574.1599. \$ **Map 1**, J8; Art Museum, 1804 Callowhill St., 215.636.9061. **Map 1**, G3; University City, 34th & Powelton streets, 215.222.1022.

South Street & Queen Village

BAINBRIDGE STREET BARREL HOUSE—*Pub/Bar*. This neighborhood bar offers 24 beers on tap and over 180 bottled beers from all over the world. On the menu, find classic pub fare like fish and chips, burgers, mac and cheese and pulled pork. L, D (Daily), Br (Sa, Su). www.bainbridgestreetbarrelhouse.com. 625-27 S. 6th St., 267.324.3553. \$ **Map 1**, J7

BISTROT LA MINETTE—*French*. Chef/owner Peter Woolsey has created an authentic bistro that reflects his passion for detail—even the original art and furnishings evoke the flavor of France's celebrated culinary regions. L, D (Daily), Br (Sa-Su). www.bistrotlaminette.com. 623 S. Sixth St., 215.925.8000. \$ **Map 1**, J7

BRAUHAUS SCHMITZ—*German*. This Philly original claims the largest selection of German beer in the city with 20 on draft and more than 80 bottles from 25 countries. Executive Chef Jeremy Nolen prepares classic German fare like house-made bratwurst, schweinshaxe and schnitzel. L, D (Daily). www.brauhauschmitz.com. 718 South St., 267.909.8814. \$-\$\$ **Map 1**, J7

ELA—*American*. The kitchen at this bar and restaurant is run by Chef Jason Cichonski and features an inventive, rotating menu, an extensive wine and beer program and an inspired cocktail list. The modern yet rustic setting allows diners a comfortable place to enjoy seriously good food. D (Daily), Br (Su). www.elaphilly.com. 627 S. Third St., 267.687.8512. \$ **Map 1**, K7

MARRAKESH—*Moroccan*. For more than three decades, this South Street-area destination has served authentic feasts. Seven-course tasting menu, \$25 per person. Private dining and belly dancers available Su-Th on request and regularly F-Sa. D (Daily). www.marrakesheastcoast.com. 517 S. Leithgow St., 215.925.5929. \$ **Map 1**, K7

THE TWISTED TAIL—*American*. This lively bourbon-and-blues emporium features a menu of charcoal-grilled fare, 40+ bourbons and plenty of craft beer. Dine at rustic wooden table indoors or out, then climb up the stairs for some rockin' live music. L (M-F), D (Daily), Br (Sa-Su). www.thetwistedtail.com. 509 S. Second St., 215.558.2471. \$ **Map 1**, K6

WHETSTONE TAVERN—*American*. At this well-regarded neighborhood spot, Chef Jeremy Nolen crafts dishes with a modern touch. The menu features familiar and approachable fare with a focus on simple preparations and fresh ingredients from local farms and producers when possible. D (Daily). www.whetstonetavern.com. 700 S. 5th St., 267.909.8814. \$ **Map 1**, J7

University City

BRIDGEWATER'S PUB—*Pub/Bar*. Conveniently located inside 30th Street Station, this cozy pub boasts an impressive, ever-changing beer selection and friendly service. The eclectic menu includes wild game and vegetarian options. L, D (Daily). www.thepubin30thstreetstation.com. 30th and Market streets, 215.387.4787. \$ **Map 1**, E5

CITY TAP HOUSE—*American*. Located on the balcony of The Radian, City Tap House boasts 60 draft beers, including rare and sought-after craft brews. Chef Al Paris offers new American pub fare including "Daily Supper" specials. Dine on the terrace, or have a cocktail around one of five stone fire pits overlooking Walnut Street. L, D (Daily), Br (Sa-Su). www.citytaphouse.com. 3925 Walnut St., 215.662.0105. \$ **Map 1**, C5; 2 Logan Square, 215.587.9040.

COZARA—*Japanese*. Chef Zama Tanaka's bi-level Japanese pub, in Chestnut Square Plaza just a block from the Chestnut Street Bridge, features tapas-style small plates with a focus on yakitori. You won't find sushi here, but just about everything else you can imagine, including a whole chicken yakitori served with honey mustard miso. www.cozaraphilly.com. 3200 Chestnut St., 267.233.7488. \$ **Map 1**, D5

DISTRITO—*Mexican*. From Philly's acclaimed chef/restaurant Jose Garces comes this high-energy spot with a menu of fresh interpretations of classics inspired by the spirited culture and cuisine of Mexico City. L, D (Daily). www.distritorestarant.com. 3945 Chestnut St., 215.222.1657. \$ **Map 1**, C5

MARGOLD KITCHEN—*American*. Located inside a traditional Victorian row house, this restaurant features the culinary alchemy of Andrew Kochan and Tim Lanza. Each build tasting menu meant to "surprise," with dishes drawing from the seasons that are as beautiful to look at as they are to eat. BYOB. D (Tu-Sa). www.margoldkitchenbyob.com. 501 S. 45th St., 215.222.3699. \$ **Map 1**, A7

VIETNAM CAFE—*Vietnamese*. With this small but sleek outpost of Chinatown's popular Vietnam Restaurant, owner Benny Lai has brought his beloved Vietnamese cuisine to the University City neighborhood. Expect savory noodle soups and dishes, seafood, rice platters and the chef's special

barbecued appetizer sampler. L, D (Daily). www.eatatvietnam.com. 816 S. 47th St., 215.729.0260. \$

WHITE DOG CAFE—*American*. This homey, antiques-filled dining room is as well known for its food as it is for its social activism. Dine on classic dishes made from locally grown and organic ingredients, like chicken liver mousse, soups and sandwiches, and omelets made with cage-free eggs. L (M-F), D (Daily), Br (Sa-Su). www.whitedog.com. 3420 Sansom St., 215.386.9224. \$-\$\$ **Map 1**, D5

Washington Square

EL FUEGO—*Mexican*. This happening spot whips up tasty "California-style" burritos, along with tacos, quesadillas and soups. The lunch hour is particularly lively, so get there early. L (Daily), D (M-F). www.elfuegoburritos.com. 723 Walnut St., 215.592.1931. \$ **Map 1**, J5

GARCES TRADING COMPANY—*American*. Philadelphia's prolific Iron Chef, Jose Garces, delivers gourmet goods at his market, bakery, barista bar and cafe. One of the best features may be the curated wine, beer and spirits available inside the market. L (M-F), D (Daily), Br (Sa-Su). www.garces Trading company.com. 1111 Locust St., 215.574.1099. \$ **Map 1**, I6

MORIMOTO—*Japanese*. This stunning brainchild of Iron Chef Masaharu Morimoto and restaurant guru Stephen Starr features inventive Japanese cuisine and the freshest sushi on the block. The chef's prix-fixe menu is particularly noteworthy. Reservations recommended. L (M-F), D (Daily). www.morimoto restaurant.com. 723 Chestnut St., 215.413.9070. \$\$\$\$ **Map 1**, J5

RISTORANTE LA BUCA—*Italian*. This romantic spot near Washington Square Park exudes Old World charm with specials like fresh seafood, brought to diners on a cart before preparation. L (M-F), D (M-Sa). L (M-F), D (M-Sa). www.ristlabuca.com. 711 Locust St., 215.928.0556. \$ **Map 1**, J6

VEDGE—*Vegan*. Husband-and-wife team Rich Landau and Kate Jacoby give vegan cuisine a good name at this inventive, modern bistro inside a handsome row house. Under the chef's deft hands, roots and leaves become the stuff of haute cuisine in dishes like "campfire gold potatoes" with black garlic tahina and baby shiitake mushrooms. Cocktails with house-made syrups and bitters are also musts. Reservations required. D (M-Sa). www.vedge restaurant.com. 1221 Locust St., 215.320.7500. \$ **Map 1**, I6

Washington Square West

AMIS—*Italian*. At this convivial trattoria (one of three Philadelphia eateries by celebrated Chef Marc Vetri), dig into tapas-style fare like short ribs with hot peppers, pork chop with parmesan and grilled shrimp with chilies and cucumber. D (Daily), Br (Su). www.amisphilly.com. 412 S. 13th St., 215.732.2647. \$ **Map 1**, I6

CRAFTSMAN ROW SALOON—*American*. Located along historic Jeweler's Row, this American-style saloon from the owners of Opa offers classics with a twist, like juicy burgers topped with mac and cheese or sausage gravy, plus local beers and spiked milkshakes. www.craftsmanrowsaloon.com. 112 S. 8th St., 215.923.0123. \$ **Map 1**, J5

Navigate | December



Manayunk

Situated on the banks of the Schuylkill River northwest of Center City, Manayunk spent much of its history as a working class neighborhood filled with textile mills, soap factories, mom and pop stores and greasy spoon diners. Little changed over the years, and when the manufacturing industries left the city, the neighborhood's attractive

row houses and cobblestone streets drew young professionals to the area. Vacant factories were converted into loft apartments and empty storefronts were revived with hip restaurants, bars and upscale boutiques, effectively transforming this once hardscrabble zone into one of the most happening enclaves in the Philly area.

Neighborhoods

AVENUE OF THE ARTS—Head to the stretch of Broad Street from Washington Avenue north to Glenwood Avenue to find some of the best cultural destinations in town, including the Academy of Music, the Kimmel Center and the Pennsylvania Academy of the Fine Arts. www.avenueofthearts.org.

CENTER CITY—Marking the geographical center of the city, Philadelphia's ornate City Hall, topped by a 37-foot statue of city founder William Penn, sits at the intersection of Broad and Market streets.

CHINATOWN—The Friendship Gate at 10th and Arch streets welcomes visitors to Philadelphia's vibrant Chinatown, the site of numerous Asian restaurants and markets. www.chinatown-pcdc.org.

FAIRMOUNT—The charming Fairmount neighborhood to the northeast of the Benjamin Franklin Parkway is home to historic Eastern State Penitentiary, as well as quaint rowhouses and restaurants.

FISHTOWN—Originally the hub of the city's shad fishing industry, this emerging neighborhood is becoming populated with artists, young professionals and hip restaurants. To the north of Northern Liberties, roughly defined by the triangle created by the Delaware River, Frankford Avenue and York Street.

ITALIAN MARKET—The famous Italian Market, where fresh produce and Italian foods are year-round commodities, extends along Ninth Street between Wharton and Fitzwater streets.

MIDTOWN VILLAGE—This thriving, centrally located area is full of independent boutiques, restaurants and lofts. It spans from Market to Spruce streets and from Broad to 11th streets.

NORTHERN LIBERTIES—This neighborhood is where the hip and artistic moved for space when Old City became cost prohibitive. The heart of the commercial district is the stretch of Second Street from Spring Garden Street to Girard Avenue, where you'll find The Piazza at Schmidts.

OLD CITY—This district is the home of some of the earliest sites in the birth of the United States, including Independence Hall, the Liberty Bell and Elfreth's Alley, along with top restaurants and chic boutiques.

PARKWAY/MUSEUM DISTRICT—The majestic Benjamin Franklin Parkway, whose design evokes Paris' Champs-Élysées, extends northwest from City Hall to the Philadelphia Museum of Art.

PENN'S LANDING—Philadelphia's Delaware River waterfront is the site of William Penn's arrival in 1682. Attractions include the Independence Seaport Museum, restaurants including Moshulu, a marina, nightlife and historic ships.

QUEEN VILLAGE—Queen Village is sandwiched between patrician Society Hill and the tightly woven Italian and ethnic communities of South Philadelphia—drawing its character a little from each. www.qvna.org.

76 Carriage Company

Go back in time and see the city by horse and carriage. Varying from 20 minutes to 30 minutes and an hour, these rides are ideal for tired legs during the day and a little romance in the evening. Day rides are available on a first-come, first-serve basis, while evening tours are by reservation. www.phillytours.com. 500 Chestnut St., 215.923.8516.

There's a lot more going on this December. Visit us online: wheretraveler.com

RITTENHOUSE ROW—Swanky shops and restaurants surround Rittenhouse Square, a lovely urban park on Walnut Street between 18th and 20th streets.

SOUTH PHILADELPHIA—Known to locals as "South Philly," this diverse, largely residential section is dotted with eclectic restaurants and pubs. East Passyunk Avenue has become a hip destination for dining and drinking. Farther south, at Broad Street and Pattison Avenue, venues like the Wells Fargo Center, Lincoln Financial Field and Citizens Bank Park host concerts, sporting events and more.

SOUTH STREET—This eclectic, gritty zone is a colorful blend of craft and clothing shops, coffeehouses, tattoo parlors and restaurants. Among the eclectic sights, find Philadelphia's Magic Gardens, a mosaic by artist Isaiah Zagar, at 10th Street.

SOUTH STREET HEADHOUSE DISTRICT—Located just a few blocks south of Independence Square, this is a popular area for top restaurants, unique retail shops, free events and great people-watching. The historic commercial district is also home to the world-renowned Philadelphia Magic Gardens, the Headhouse Shambles and historic Fabric Row. South Street, from Front to 11th streets.

WASHINGTON SQUARE—This district includes Historic Antique Row along Pine Street (from Broad to Ninth streets), plus Jeweler's Row, a historic diamond and jewelry district, on Sansom Street from Seventh to Ninth streets. Washington Square itself includes a number of historic monuments.





WEST PHILADELPHIA—West of University City, this is a vast and diverse section dotted with ethnic restaurants and colorful row houses. Attractions include the Philadelphia Zoo, the nation's first zoo.

Philadelphia Region

ATLANTIC CITY—Just a short drive or train ride from Philadelphia, Atlantic City is more than a beachfront casino mecca. In recent years, the city has become a destination for world-class dining, shopping, spas and entertainment thanks to an array of high-end hotels, restaurants, retail centers and performance venues. www.atlanticcitynj.com.

BUCKS COUNTY—Located 25 miles from Philadelphia, Bucks County is a picturesque countryside of Rockwellian towns boasting lush vineyards, historic mansions, eclectic shops, charming covered bridges, blooming gardens and top dining destinations. In Doylestown, head to the Mercer Museum, a six-story concrete castle that holds over 40,000 artifacts from early America, or admire Pennsylvania impressionist paintings at the James A. Michener Art Museum. Next, venture to New Hope, a colorful town along the Delaware River. Climb aboard a 1925 steam locomotive and ride the rails along the New Hope and Ivyland Railroad. Afterwards, head to Main Street and shop everything from handcrafted household items to antique treasures in an eclectic array of boutiques. Other attractions include New Hope, an artsy town along the Delaware River; Peddler's Village, a 42-acre country shopping village; and Sesame Place, the popular children's adventure park based on "Sesame Street." www.visitbuckscounty.com. Call Visit Bucks County at 800.836.2825.

FAIRMOUNT PARK—Comprising 63 parks and totaling 9,200 acres, Fairmount Park is a year-round treasure with trails for walking, horseback riding and biking. The system also includes the Wissahickon Creek and the Schuylkill River Trail in addition to many small parks dotting the city. www.fairmountpark.org.

MAIN LINE—This exclusive area stretches along Lancaster Avenue northwest of City Line Avenue, and includes the upscale towns of Merion, Bryn Mawr, Villanova and Wayne, among others. In addition to many shops and restaurants, points of interest in this area include the campuses of Bryn Mawr and Haverford colleges and Villanova University. SEPTA Regional Rail lines make this area easily accessible from Center City.

VALLEY FORGE—History abounds in the lovely Valley Forge area, about 25 minutes outside the city. Here, the big attractions are the 3,500-acre Valley Forge National Historical Park and the Valley Forge Casino Resort. www.valleyforge.org. Call the Valley Forge Convention and Visitors Bureau at 610.834.1550.

Tourist Information

CITY HALL VISITOR CENTER—Located right in the heart of Philadelphia, the center lets visitors experience one of the city's most iconic buildings. Knowledgeable representatives offer essentials including maps and brochures. Tours of this architectural treasure are available, as well as souvenirs and itineraries. M-F 9 am-5 pm, and select Saturdays. www.phlvisitorcenter.com/cityhall. East Portal, Room 121, Broad and Market streets, 215.686.2840.

INDEPENDENCE VISITOR CENTER—This state-of-the-art facility serves as a primary point of orientation for those wishing to tour Independence National Historical Park and the greater Philadelphia region. Multilingual reps offer assistance and a wide selection of maps and brochures to over 200 sights. Also here, tickets to more than 100 tours and attractions, including free, timed tickets to tour Independence Hall; arrive early, as tickets go fast. Daily 8:30 am-6 pm. www.phlvisitorcenter.com. Sixth and Market streets, 800.537.7676.

SISTER CITIES PARK VISITOR CENTER—Sister Cities Park is a tranquil destination for those wishing to embrace Philadelphia's vibrant cultural scene. The park's visitor center is your gateway to the mile-long stretch of first-class museums and attractions that give life to the parkway. Expert representatives provide custom itineraries, maps and brochures. Visitors can also purchase tickets to popular Philadelphia attractions, including many of the impressive institutions located right outside its doors. M-Sa 9:30 am-5:30 pm, Su 9:30 am-5 pm. www.PHLvisitorcenter.com/sistercities. 18th Street and Benjamin Franklin Parkway, 267.514.4760.

Tours

ARCHITECTURAL WALKING TOURS—The Preservation Alliance offers guided walking tours that explore the past, present and future of Philadelphia through architecture. Tours include: The "little streets" of Center City, Society Hill and Art Deco. Find a complete list on the website. \$15; \$12 students; children (ages 10 and under) free; Preservation Alliance Members, \$10. Private outings available upon request. www.preservationalliance.com/what-we-do/architecture-walking-tours/. 1608 Walnut St., Suite 804, 215.546.1146

AWFULLY NICE TOURS—This company offers driving and walking tours of the region with hotel pickups. Guides focus on visitor interests, including history, restaurants, public art and murals, museums, movie locations and architecture. Trips to Valley Forge, Lancaster and the Brandywine are also available. Call for rates and availability. www.awfullynicetours.com. 229 Arch St., 215.280.3746. **Map 2, E2**

BIG BUS COMPANY: PHILADELPHIA—Hop on and off double-decker buses as often as you like during a one-, two- or three-day pass. Tickets can also be used with Philadelphia Trolley Works. Tours depart from the northeast corner of 5th and Market streets and stop at 27 attractions. One day: \$32, seniors \$29, children (ages 4-12) \$10, under 4 free (tickets can be purchased on the bus). Visit the website for full list of prices and other tour offerings. Free hotel pickup in Center City and at the airport. www.phillytour.com. 215.389.8687.

BOW TIE TOURS—Ten themes, from "Sex and the (First) City" to the "Battle of Brandywine," are studded with fascinating historical facts—focused largely but not exclusively on the fight for Independence—about Philadelphia and its immediate environs. Call or consult website for schedule and pricing. www.bowtietours.com. 610.642.2410.

CHEW PHILLY FOOD TOURS—This Zagat-rated tour offers three themed adventures: the Authentic Philly Food Tour in Manayunk (Th-Su, \$59), the Chestnut Hill Culinary Experience (Sa-Su, \$59), and the Haunted Food Tour (Th-Su, \$74). All offer samples and a calorie-burning walk. www.phillyfoodtours.com. 800.656.0713.

CITY FOOD TOURS—These tasty outings include over two hours exploring the city's top-notch foods, plus sightseeing to impress history buffs and novices alike. Saturdays only; call for schedules and prices. Reservations required. www.cityfoodtours.com. 800.979.3370.

CITY HALL INTERIOR AND TOWER TOURS—Explore the history, art and architecture of the world's highest masonry load-bearing structure, which consists of 88 million bricks. Ascend 500 feet to the top of the historic tower via elevator for panoramic views of the Benjamin Franklin Parkway from the city's highest open-air observation deck. Interior: \$15. Tower: \$8, seniors/military \$6, students \$4, under 3 free. M-F 9 am-4:15 pm, and some Sa. 11 am-4 pm. www.phlvisitorcenter.com/cityhall. East Portal, Room 121, Broad and Market streets, 215.686.2840.

DOUBLE DECKER HOP-ON-HOP-OFF TOUR OF PHILADELPHIA—Philly Tours offers this double-decker bus ride that takes passengers through two dozen stops (90 minutes total) across the city, with unlimited hop-on and -off privileges. Passengers feel the wind in their hair and get a bird's eye view from the second-story, open-air cabin as friendly guides narrate Philadelphia history, from Colonial times to the legacy of the hot pretzel. \$9.95-\$34.95, one- and two-day ticket options. www.phillytours.us. 215.922.2300.

FRANKLIN'S FOOTSTEPS COLONIAL WALKING TOUR—This guided tour retraces the footsteps of Ben Franklin and his fellow patriots during the founding of the nation. \$12-\$19. Tours depart from the Sightseeing Tour kiosk inside Independence Visitor Center. Call for times. www.phillytour.com. Sixth and Market streets, 215.389.8687. **Map 1, J5**

FREE AND FRIENDLY TOURS—These amiable folks operate exclusively on tips. Themes include an award-winning Colonial Cheesesteak Tour, the Billy Penn Tour and custom excursions. Check website for times, or call to coordinate group outings. www.freeandfriendlytours.com. 877.558.9671.

GRIM PHILLY TWILIGHT TOURS—More than a dozen options delve into topics from vampires, sex and ghosts to serial killers and bootleggers. While lurid, these adventures are also educational, led by founder (and university professor) Joe Wojcie and his team of experts. Tours are uncensored and not suitable for children. Times, pricing and subject matter vary; call or consult website for details. www.grimphilly.com. 856.829.3100.

MURAL ARTS PROGRAM TOURS—Explore the world's largest outdoor art gallery by taking a walking, trolley or train tour. Experienced guides offer an insider's view of the artwork, the artistic process and community histories. Tour types, times and prices vary. Reservations strongly recommended. www.muralarts.org/tour. Tours depart from the Pennsylvania Academy of Fine Arts, Hamilton Building, 128 N. Broad Street, 215.685.0750. **Map 1, J5**

PHILADELPHIA TROLLEY WORKS—This trolley takes riders to 27 stops throughout the city. Hop on and off on a one-, two- or three-day pass. Tickets can also be used on the Big Bus Philadelphia. Trolleys depart from the northeast corner of 5th and Market streets. One-day: \$32, \$29 seniors, children (ages 4-12) \$10, under 4 free. See website for full list of prices and tour offerings. Free hotel pickup in Center City. www.phillytour.com.

Trolleys depart from Fifth and Market streets, NE corner, 215.389.8687.

PHILLY BIKE TOUR COMPANY—Launched in 2013 and based out of retail shop Fairmount Bicycles, PBTC offers guided trips from the beautiful parks and historic buildings to the old-world mansions and off-the-beaten-track neighborhoods. Tours can be reserved online up to 48 hours in advance. \$49-\$89. Tu-Su 10:30 am-5:30 pm. www.phillybiketours.com. 2015 Fairmount Ave., 267.521.2150.

PHILLY BREW TOURS—Sip your way through the city with fellow beer lovers at the region's craft breweries while learning about the brewing process and the local beer scene. Tours may include Yards Brewing Co., Philadelphia Brewing Co., Dock Street Brewery, 2nd Story Brewing Co., Flying Fish Brewing Co., Lunacy Brewing, and Saint Benjamin Brewing Co. Check website for a list of daily options, both public and private. \$65-\$90. www.phillybrewtours.com. 215.866.2337.

PHILLY BY SEGWAY—One-hour outings explore along the Delaware and into the heart of South Philly, the Italian Market and Society Hill and by many famous historic landmarks. Two-hour trips delve into the city in a 10-mile river-to-river excursion. The cheesesteak tour includes samples from five restaurants. Check website for prices. www.phillybysegway.com. 229 Arch St., 215.280.3746. **Map 2, E2**

PHILLY CHEESESTEAK TOUR—Learn about Philly's favorite food during this interactive bus tour. Sample five of the most popular cheesesteak spots in Center City and South Philly and then vote on your favorite, all while learning fun facts about the famous steak sandwich and seeing popular Philadelphia landmarks. Tours depart at 1:30 pm from the Philadelphia Independence Visitor's Center, 6th and Market streets. \$59.95. www.phillycheesesteaktour.com. 215.432.2096. **Map 1, J5**

URBAN ADVENTURES PHILADELPHIA—Choose from eight themed outings led by friendly and knowledgeable guides who give an insider's perspective on the city. Revel in colonial and revolutionary history on the "History in HD tour" (which includes beer), experience the eclectic vibrancy of South Philly in "Italian Market Immersion," and the city's beer culture in "Philly on Tap." Private tours also available. Prices vary. Check website for details. www.philadelphiaurbanadventures.com. 229 Arch St., 215.280.3746. **Map 2, E2**

THE YO, PHILLY! ROCKY FILM TOUR—The man himself (well, a really good impersonator) takes visitors to "his" apartment, "Take you back" corner, Mickey's Gym, the Italian Market and more. \$350 (flat, for 1 to 7 people). www.theyorockyfilm tour.net.

Transportation

LUCY BUS ROUTE—This weekday loop stops at key locations in the University City neighborhood, including 30th Street Station, University of Pennsylvania, University City Science Center, University of Pennsylvania Medical Center, Drexel University and more. \$2.25 base fare. Departs from the 30th Street Station every 12 to 35 minutes. M-F, Green and Gold Loop: 6:10 am-7 pm. Wheelchair accessible. www.universitycity.org/lucy. 215.580.7800.

NEW JERSEY TRANSIT—This system provides convenient bus and train service between Philadelphia and Atlantic City (and beyond). Trains to Atlantic City depart from 30th Street Station. Buses leave regularly from the Greyhound bus terminal at 10th and Filbert streets. Call for pricing. www.njtransit.com. 973.275.5555.

THE PHILLY PHLASH DOWNTOWN LOOP—A quick, convenient and affordable connection to Philadelphia's popular attractions, the PHLASH takes riders to 22 stops every 15 minutes, 10 am-6 pm. \$2 single ride, \$5 all-day pass; free for children (ages 4 and under), seniors and SEPTA pass and key card holders. www.ridephillyplash.com. 800.537.7676.

SEPTA—The city's transportation authority provides bus, train, trolley and subway service throughout the city and surrounding suburbs. One-way subway or bus fare is \$2.50. Unlimited travel for one day on any SEPTA vehicle is available with the One Day Independence Pass for \$13 or the Family Independence Pass for \$30. www.septa.org. 215.580.7800.

YOUR TICKET TO
FEEL RIGHT AT HOME
IN THE CITY OF BROTHERLY LOVE

Take your time, and take it all in. Experience the best attractions Philadelphia has to offer, handpicked and wrapped up for you in an easy-to-use ticket booklet — all at a huge savings.

SAVE 44%OR MORE

1 BOOKLET
4 TOP ATTRACTIONS

— BUY HERE —

The Franklin Institute

Big Bus Company and Philadelphia Trolley Works

One Liberty Observation Deck

Adventure Aquarium

OR

Philadelphia Zoo

98% RECOMMEND CityPASS
VALID 9 DAYS

Iconic Spots.
Significant Savings.
One Amazing Experience.

citypass.com

PHILADELPHIA
CityPASS

ATL BOS CHI DAL HOU NYC **PHL** SF SEA SCLL TB TOR

Savings based on adult pricing.
Program, pricing and discounts subject to change; visit citypass.com for current details.

36 WHERE PHILADELPHIA | DECEMBER 2017

NAVIGATE

www.wheretotraveler.com 37



Entertainment | December



Union Transfer

Once a luggage terminal in the early 1900s, this music hall now packs in crowds who appreciate the chandeliers and stained glass as backdrops for hip music. This month, "A John Waters Christmas" (Dec. 9) takes the stage. www.utphilly.com. 1026 Spring Garden St., 215.232.2100. Map 1, I2



Walnut Street Theatre

Built in 1809, this storied stage is the oldest continuously operating theater in the U.S. and has hosted numerous historical performances attended by the likes of President Thomas Jefferson. Through Jan. 7, "Annie" sings her way to a happy home. www.walnutstreettheatre.org. 825 Walnut St., 215.574.3550. Map 1, J5



Buffalo Billiards

This Old City haunt mixes a sports bar with a darts lounge, an arcade and a pool hall all inside a dimly lit dive bar that's ideal for kicking back with pals. Draught beers and a full grill provide ample sustenance to keep the fun going. www.buffalobilliards.com. 118 Chestnut St., 215.574.7665. Map 1, K5

Arcade & Billiards

ARNOLD'S FAMILY FUN CENTER—One of the largest indoor fun centers in the United States features electric go-karts, bumper cars, crazy cars, a bounce zone, laser tag, black-light mini golf and bowling lanes. Cafe, bistro and bar. Hours vary by season. www.arnoldsfcc.com. 2200 West Drive, Oaks, Pa, 610.666.0600.

BARCADE—As the name suggests, this cavernous space in Fishtown ingeniously combines a bar with an arcade, serving a stellar selection of craft beer to lovers of old-school games like Donkey Kong, Ms. Pacman and Space Invaders, which are all just \$.25 a game. Must be 21 or older to enter. M-Su noon-2 am. www.barcadephiladelphia.com. 1114 Frankford Ave., 215.634.4400. Map 1, L1

DAVE & BUSTER'S—Popular with kids and grown-ups alike, this lively spot has more than 200 interactive and video games, plus several HD televisions. Whether you stop by for happy hour and billiards or stay to game all night, this mega-arcade is sure to bring the fun. Su-Th 11:30 am-midnight, F-Sa 11:30 am-2 am. www.daveandbusters.com. 325 N. Columbus Blvd., 215.413.1951. Map L3; 1995 Franklin Mills Circle, 215.632.0333

Bars & Lounges

ABBAYE—Locals will greet you with open arms in this homey Northern Liberties corner bar. Come for the music, cheesesteaks and fine Belgian beer.

M-F 11:30 am-2 am, Sa-Su 10 am-2 am.
www.theabbaye.net. 637 N. Third St., 215.627.6711. Map 1, K2

ASHTON CIGAR BAR—Enjoy the vast selection of 200 different cigars and an extensive bar list including wines, cordials and rare liquors at the only cigar bar open to the public in the city, complete with a state-of-the-art air purification system. Sa-Th 4 pm-2 am, F noon-2 am. www.ashtoncigarbar.com. 1522 Walnut St., 2nd floor, 267.350.0000. Map 1, H6

BARBARY—Dance the night away with great DJs, cheap drinks and disco lights, or take a break from all the action in the bar's cozy photo booth. Daily 10 pm-2 am. www.thebarbary.org. 951 Frankford Ave., 215.634.7400. Map 1, L1

BRIDGEWATER'S PUB—Located in historic 30th Street Station, this Irish/English style pub pours draughts from around the world alongside local microbrews. The kitchen serves a full menu with constantly changing specials. M-Sa 11:30 am-midnight, Su 11:30 am-10 pm. www.thepubin30thstreetstation.com. 30th Street Station, 215.387.4787.

CONSHOCKEN BREWING COMPANY—This brewpub in the Main Line features the recipes of head brewer Andrew Horne, a Philadelphia native who learned his trade with breweries like Yards, Avery and Breakside. Grab a pint of the flagship brew, the Cascadian Dark Ale, while munching on affordable bar snacks. M-W 4 pm-10 pm, Th 4 pm-11 pm, F 3 pm-12 am, Sa 11 am-12 am, Su 11 am-8 pm.

www.conshohockenbrewing.com. 739 East Elm St., Suite B, Conshohocken, Pa., 610.897.8962. \$

THE GASLIGHT—This casual, comfortable bar and restaurant is located in Philadelphia's historic district, serving a sophisticated take on pub grub. Look for happy hour specials during the week and a tasty brunch (and live entertainment) on weekends. Extensive beer list. M-Th 5 pm-midnight, F 5 pm-2 am, Sa 11-2 am, Su 11 am-midnight. www.thegaslightphilly.com. 120 Market St., 215.925.7691. Map 1, K5

GRAFFITI BAR—True to its name, this fun-loving covered patio features the spray-paint art of local Philadelphians. Located behind the stylish Asian-fusion restaurant, Sampan, it also serves the same acclaimed food. Get there by slipping down the graffitied side alley. M-Tu 4 pm-10 pm, W-Th 4 pm-11 pm, F-Sa 4 pm-midnight, Su 4 pm-9 pm. www.sampanphilly.com. 124 S. 13th St., 215.732.3501. Map 1, I5

HOWL AT THE MOON—The talented staff at this dueling piano bar perform crowd favorites from the '70s to today and take requests, keeping the crowd dancing and singing along all night. Try a one of the signature cocktails or a "bucket of booze," which serves four or more people. M-W 7 pm-2 am, Th 6 pm-2 am, F-Sa 5 pm-2 am. www.howlatthe moon.com. 258 S. 15th St., 215.546.4695. Map 1, H6

There's a lot more going on this December. Visit us online: wheretraveler.com

(FROM LEFT) © G. MILLER FOR VISIT PHILADELPHIA™; © MARK GARVIN; © VOLODYMYR BURDIACK/SHUTTERSTOCK

BROADWAY'S FAVORITE FAMILY MUSICAL!



Annie

NOW - JANUARY 7

FOR TICKETS VISIT: WalnutStreetTheatre.org [ticketmaster](http://ticketmaster.com)
OR CALL 215-574-3550 or 800-982-2787



AMERICA'S OLDEST THEATRE - PHILADELPHIA'S MOST POPULAR THEATRE COMPANY

WALNUT STREET THEATRE
825 Walnut Street • Visit us at WalnutStreetTheatre.org



BUSY BODIES Can't get enough after-hours fun? For more bars, clubs, live music shows and theater, visit www.wheretraveler.com/Philadelphia.



IRISH PUB—Munch on hearty pub fare and sip a brew at this fun, casual Philly favorite. Evenings draw a lively crowd of young professionals, visitors and even Philly sports stars and celebrities. M-Sa 11-2 am, Su 10-2 am. www.irishpubphilly.com. 2007 Walnut St., 215.568.5603. **Map 1, G5**; 1123 Walnut St., 215.925.3311. **Map 1, I5**

KITE & KEY—This lively gastropub in the Fairmount nabe pours a dozen, mostly local, brews for a crowd of young professionals. Service here is fast and friendly. Daily 11 am-2 am. www.thekiteandkey.com. 1836 Callowhill St., 215.568.1818. **Map 1, G3**

LOCAL 44—Grab a drink at the 20-tap bar or a bite at the restaurant, and then shop more than 500 bottles of craft beer, including a well-stocked rare and limited edition library. M-F 11:30 am-2 am, Sa-Su 11 am-2 am. www.local44beerbar.com. 4333 Spruce St., 215.222.2337. **Map 1, A6**

LONDON GRILL—London Grill is a Fairmount institution, located steps from historic Eastern State Penitentiary. For years, its dark wood bar has hosted locals looking for sophisticated bar fare. Look for events, like weekly quiz nights. M 4 pm-2 am, Tu-F 11 am-2 am, Sa-Su 10 am-2 am. www.londongrill.com. 2301 Fairmount Ave., 215.978.4545. **Map 1, F2**

MCGILLIN'S OLD ALE HOUSE—Opened in 1860, this historic taproom is Philly's oldest tavern and claims the city's first liquor license. Locals and visitors head here for the friendly crowd, hearty pub fare and nearly 30 draft beers. Daily 11 am-2 am. www.mcgillins.com. 1310 Drury St., 215.735.5562. **Map 1, I5**

MEMPHIS TAPROOM—This nationally acclaimed craft beer destination also boasts a menu of beer-centric dishes with vegetarian and vegan options. Daily 11:30 am-2 am. www.memphistaproom.com. 2331 E. Cumberland St., 215.425.4460. **Map 1, E2**

MILKBOY—These popular bars double as live music venues, featuring both local and nationally recognized performers. Each location boasts a signature roll-up garage-style window, weekday morning cocktails and delicious American food. It's free to hang out, but shows are usually ticketed. M-F 7 am-2 am, Sa-Su 11 am-2 am. www.milkboyphilly.com. 1100 Chestnut St., 215.925.6455. **Map 1, I5**

MONK'S—For more than 20 years, this Center City spot has been earning raves throughout the city for its top selection of beer and a tasty food menu to boot. Located just off Spruce Street, Monk's occasionally gets limited distribution kegs shipped in from the farthest reaches of the country. Daily 11:30 am-2 am. www.monkscafe.com. 264 S. 16th St., 215.545.7005. **Map 1, H6**

THE PLOUGH & THE STARS—The beautifully renovated building features lofty ceilings and flowing Guinness. Not your typical Irish pub, The Plough is a little more hip, with a continental menu to match. During the weekend, stop by for some late-night dancing. M-F 11:30 am-2 am, Sa-Su 10:30 am-2 am. www.ploughstars.com. 123 Chestnut street, 215.733.0300. **Map 1, K5**

PUB ON PASSYUNK EAST—This hipster hotspot in South Philly (aka "POPE") is beloved for its long and diverse beer list, jukebox, a friendly and knowledgeable bar staff, and endless inspiration for people-watching. Daily 11 am-2 am. www.pubonpassyunkeast.com. 1501 E. Passyunk Ave., 215.755.5125. **Map 3, D3**

ROYAL TAVERN—This bustling spot has one of the best burgers in town and plenty of beers on tap to wash it down. Come early; seats fill up fast. M-F 11:30 am-2 am, Sa-Su 10 am-2 am. www.royaltavern.com. 937 E. Passyunk Ave., 215.389.6694. **Map 1, J8**

SIDECAR BAR & GRILLE—This intimate neighborhood pub has an enormous selection of beer and a Cajun-inspired dinner menu. Six-packs to go are also available. M-F 4 pm-2 am, Sa-Su 9 am-2 am. www.thesidecarbar.com. 2201 Christian St., 215.732.3429. **Map 1, F8**

SOUTHWARK—For Old World style and one of the best Manhattans in town, come to this gem of a bar right off of South Street. W-M 5 pm-2 am. www.southwarkrestaurant.com. 701 S. Fourth St., 267.930.8538. **Map 1, K7**

STANDARD TAP—This old school two-story bar, built by a former Sam Adams brewmaster, has all the cozy pub charm with the full menu of a proper restaurant. A rotating roster of 20 locally produced beers and chalkboards dispersed throughout display the daily creations of Chef Carolyn Angle, whose repertoire includes terrines, wild game entrees and decadent desserts. M-F 4 pm-2 am, Sa-Su 11 am-2 am. www.standardtap.com. 901 N. Second St., 215.238.0630. **Map 1, K1**

STRATUS ROOFTOP LOUNGE—This sophisticated open-air social space on the 11th floor of Hotel Monaco is the place to be for cocktails with a twist—of history (it looks out at Independence Hall, after all). The menu features top-shelf tipples, while a 30-foot-long fireplace heats up the ambiance on cooler nights. M-W 5 pm-midnight, Th-F 5 pm-2 am, Sa 7 pm-2 am. www.stratuslounge.com. 433 Chestnut St., 11th floor, 215.925.2889. **Map 1, K5**

THE RANSTEAD ROOM—Hidden off a side street adjacent to restaurant El Rey, this dimly lit enclave serves libations minted at the turn of the century in true speakeasy style. Look for the "RR" on the door. Daily 6 pm-2 am. 2013 Ranstead St., 215.563.3330. **Map 1, G5**

TIKI—Hang 10 at this fun bar channeling Polynesian tiki and California surf rock. With two levels, there's plenty of space to chill, from the bar and open kitchen on the ground floor to the roof deck. M-Sa 5 pm-2 am, Su 1 pm-11 pm. www.tikiphilly.com. 102 S. 13th St. Philadelphia, Pa., 215.309.3435. **Map 1, H5**

THE TRESTLE INN—Enjoy a night of classic cocktails, 60 domestic and international whiskies and retro bar snacks. Then maybe strut your stuff with go-go dancers, who shake it to everything from soul and funk to classic disco. Events throughout the week include Spirit of Wednesday, where patrons partake in complimentary tastings and drink specials. W-Th 5 pm-1 am, F-Sa 5 pm-2 am. www.thetrestleinn.com. 339 N. 11th St., 267.239.0290. **Map 1, I3**

VESPER—The formerly private Vesper Club has reopened as a restaurant and lounge with a speak-easy vibe, serving up toasts, tastes and steak dinners. At the bar, classic cocktails are on the menu, from the negroni to the French 75. Live and local music command attention seven nights a week in the Skyline Room. M-F 3:30 pm-2 am, Sa 5 pm-2 am. www.vesperphilly.com. 223 Sydenham St., 267.603.2468 267.603.2468. **Map 1, H5**

VINTAGE—This gorgeous Midtown Village wine bar has an impressive list of reds, whites and everything in between. It's vino without the

pretension. M-F 4 pm-2 am, Sa-Su 11 am-2 am. www.vintage-philadelphia.com. 129 S. 13th St., 215.922.3095. **Map 1, I5**

Bowling

LUCKY STRIKE LANES—Hollywood's über-cool bowling lounge makes its way east. This stylish Center City spot features '50s décor, comfort food, delicious cocktails and plenty of lanes to roll. M-Tu 11:30 am-1 am, W-Th till midnight, Fr till 2 am, Sa noon-2 am, Su noon-midnight. www.bowl Luckystrike.com. 1336 Chestnut St., 215.545.2471. **Map 1, I5**

NORTH BOWL LOUNGE 'N' LANES—Northern Liberties catches onto the contemporary bowling craze with this retro alley. Bowl downstairs in the Pop-modern alley and then relax post pins with a drink in the second-floor lounge. North Bowl also offers billiards and classic arcade games. M-F 5 pm-2 am, Sa-Su noon-2 am. www.northbowlphilly.com. 909 N. Second St., 215.238.2695. **Map 1, K1**

Casinos

PARX CASINO—Located in Bensalem, about 20 miles north of Center City by way of I-95 or the PA Turnpike, Parx is worth the trip. This 164,000-square-foot casino boasts 3,500 slot machines, 120 live table games, 80 poker tables and a variety of restaurants, bars and entertainment, including thoroughbred horse racing at Philadelphia Park Racetrack. Complimentary parking. Daily 24 hours. www.parxcasino.com. 2999 Street Road, Bensalem, Pa., 888.588.7279. **Map 4, F1**

SUGARHOUSE CASINO—Wager on having a fantastic time at this 45,000-square-foot casino on the Delaware River waterfront in the Fishtown neighborhood. The huge gaming floor offers slots, as well as live table games such as craps, blackjack and poker. Onsite dining, free parking and valet available. Daily 24 hours. www.sugarhousecasino.com. 1001 N. Delaware Ave., 877.477.3715. **Map 1, L1**

VALLEY FORGE CASINO—This casino about 30 minutes beyond Philly city limits boasts more than 600 slot machines, along with 50 table games, including blackjack, craps and roulette. Onsite dining and nightlife options range from fine steak-and-seafood at Pacific Prime to cocktails and dancing at Seven nightclub. Daily visitors can access the casino floor after spending \$10 or more at one of the restaurants or shops on the property. Accessible from Routes 202, I-76 and the Pa. Turnpike. Daily 24 hours. www.vfcasino.com. 1160 First Ave., King of Prussia, Pa., 610.354.8118.

Classical & Opera

CAPLAN CENTER FOR THE PERFORMING ARTS—Part of the University of the Arts, this 22,000-sq.-ft. Avenue of the Arts space brings top-notch acts from jazz music to theatrical productions. The 140-seat recital hall and 100-seat black box theater ensure intimacy with high-quality acoustics. Located on the 16th and 17th floors. www.uarts.edu/about/caplan-center-performing-arts. 215.717.6030. **Map 1, H5**

OPERA PHILADELPHIA—Philly's premier opera company stages a full season of opulent productions. Not only does this company present classics with rich precision, but it also produces new and innovative operas. www.operaphila.org.



Win a Trip to Marin County

Escape to California and experience the Bay Area like never before. Explore Point Reyes and its miles of beaches, scenic trails, artisan food and flourishing wildlife. Trip includes airfare for two, a two-night/three-day stay at The Lodge at Point Reyes and an unforgettable adventure in Marin County.

Enter daily through Dec. 31 at wheretraveler.com/contest



wheretraveler.com



Academy of Music, Broad and Locust streets, 215.893.1999. **Map 1, H6**

PHILADELPHIA CHAMBER MUSIC SOCIETY—With a mission of making classical music accessible to a wide audience, the Chamber Music Society performs more than 60 concerts annually. Performances are regularly held in the intimate Perelman Theater at the Kimmel Center. This month: Harold Robinson and Friends, **Dec. 3**; Emerson Quartet, **Dec. 6**; Jeremy Denk, Piano, **Dec. 7**; Gamut Bach Ensemble, **Dec. 13**; The Crossing, **Dec. 15**. www.pcmsconcerts.org. Kimmel Center for the Performing Arts, 300 S. Broad Street, 215.569.8080. **Map 1, H6**

THE PHILADELPHIA ORCHESTRA—Founded in 1900, the Philadelphia Orchestra has distinguished itself as one of the leading orchestras in the world, and is led by dynamic music director Yannick Nézet-Séguin. This month: Christmas Kids' Spectacular, Runnicles Conducts Mozart, **Dec. 2**; Hilary Hahn Plays Bernstein, **Dec. 7 & 9-10**; Glorious Sound of Christmas, **Dec. 14-17**; Messiah, **Dec. 21-22**; New Year's Eve, **Dec. 31**. www.philorch.org. Kimmel Center for the Performing Arts, 300 South Broad St., 215.893.1999. **Map 1, H6**

Concert Venues

BB&T PAVILION—This amphitheater-style venue on the Camden, NJ waterfront hosts large concerts by the nation's most popular artists. This month: Sublime with Rome, **Dec. 31**. www.waterfrontamphitheater.com. 1 Harbour Blvd., Camden, NJ, 800.745.3000. **Map 1, M6**

BORGATA EVENT CENTER—Located in casino-filled Atlantic City, the Borgata Events Center books acts by rock 'n' roll superstars, pop sensations and legendary crooners. This month: Gypsy Wisdom, **Dec. 1**; Lost in Paris, **Dec. 7**; The Kicks, **Dec. 8**; Kristen and The Noise, **Dec. 15**; The Zoo, **Dec. 22**; Gov't Mule, **Dec. 29**. www.theborgata.com. One Borgata Way, Atlantic City, NJ, 603.317.1000.

ELECTRIC FACTORY—Big-name and up-and-coming acts appear at this cavernous, mostly standing-room venue with a busy calendar. Ticket prices and show times vary. This month: Illenium, **Dec. 7**; Get The Led Out Tribute Band, **Dec. 8**; Dark Star Orchestra, **Dec. 29-31**. www.electricfactory.info. 421 N. Seventh St., 215.627.1332. **Map 1, J3**

THE FILLMORE PHILADELPHIA—Fishtown's legendary Ajax Metal Factory has been transformed into a state-of-the-art 2,500 capacity venue, honoring the traditions of historic Fillmore music halls and weaving in some Philly flavor. On the top floor, The Foundry serves as a smaller venue where local bands and DJs take the stage. This month: Jacob Banks, **Dec. 1**; Morrissey, **Dec. 4**; LCD Soundsystem, **Dec. 5-7**; Just Surrender, **Dec. 08**; The White Buffalo, **Dec. 12**; Ryan King, **Dec. 14**; Trophy Eyes, **Dec. 15**; Chynna, **Dec. 16**; Brandon "Taz" Niederauer, **Dec. 22**; Billy Mungus Big Band **Dec. 30**; Pretty Lights Live, **Dec. 31**. www.thefillmorephilly.com. 29 E. Allen St., 215.309.0150. **Map 1, L1**

THEATRE OF THE LIVING ARTS (TLA)—This former movie house is now a two-story music venue featuring popular touring bands and a funky boho vibe. This month: Monster Energy Outbreak Tour Presents: Waterparks, **Dec. 1**; Radio 104.5 Presents Beach Slang - Drunk or Lust Tour 2017, **Dec. 2**; Brandon Rombert and Cherry Pop Presents: Code Red 5th Anniversary Gala, **Dec. 3**; Suicideboys - Global Epidemic Tour, **Dec. 5**; Lil Pump, **Dec. 6**;

Pigeons Playing Ping Pong, **Dec. 8**; Mogawi, **Dec. 9**; SVMRS and The Interrupters w/ special guests The Regrettes and Mt. Eddy, **Dec. 10**; The Dan Band, **Dec. 15**; The Broken Crowns Tour Featuring Matsyahu, Common Kings and Orphan, **Dec. 16**; The White Panda: Winter is Here Tour, **Dec. 23**; WXPN Welcomes The Marcus King Band, **Dec. 27**; Band of Brewers, **Dec. 30**. www.lnphilly.com. 334 South St., 215.922.1011. **Map 1, K7**

WELLS FARGO CENTER—The biggest names in music stop at this stadium arena and sports complex in South Philadelphia. Get there by car or take SEPTA's Broad Street subway line to AT&T Station. This month: Jay Z, **Dec. 1**; Andrea Bocelli, **Dec. 8**; Trans-Siberian Orchestra, **Dec. 17**. www.spectratix.com. 3601 S. Broad St., 215.336.3600. **Map 4, D4**

Dance

ANNENBERG CENTER FOR THE PERFORMING ARTS—This popular performing arts venue on the campus of the University of Pennsylvania features a diverse array of shows from around the world, including excellent touring dance troupes. www.annenbergcenter.org. 3680 Walnut St., 215.893.3900. **Map 1, C5**

PARSONS DANCE COMPANY—Internationally renowned contemporary dance company, winner of both the Dance Magazine Award and also the American Choreography Award, presents pieces at University of Pennsylvania's Annenberg Center. www.annenbergcenter.org. Annenberg Center for the Performing Arts, 3680 Walnut St., 215.898.3900. **Map 1, C5**

PENNSYLVANIA BALLET—Established in 1963, this company is considered to be one of the premier ballet companies in the United States, bringing the best in classical performance to the Philadelphia stage. This month: George Balanchine's The Nutcracker, select dates **Dec. 8-31**. www.paballet.org. Academy of Music, 240 South Broad Street, 215.893.1999. **Map 1, H6**

PHILADANCO—The Philadelphia Dance Company (Philadanco) is a non-profit organization that presents predominantly African-American traditions in dance while increasing dance appreciation in the area. This month: PHILADANCO! Presents H-I-S-T-O-R-Y at the Kimmel Center, **Dec. 15-17**. www.philadanco.org. Kimmel Center for the Performing Arts. Broad and Spruce streets, 215.893.1999. **Map 1, H6**

Film

CINEMARK UNIVERSITY 6 THEATRE—This ultramodern multiplex boasts six climate-controlled auditoriums and reserved stadium-style seating. Screens popular new releases. www.ravemotionpictures.com. 4012 Walnut streets, 215.386.9800. **Map 1, B5**

Gay & Lesbian Clubs

KNOCK RESTAURANT AND BAR—Known for its friendly scene and inspired cuisine, Knock draws a sophisticated gay clientele of all ages. A daily happy hour is served from 5 pm-7 pm. Daily 11 am-2 am. www.knockphilly.com. 225 S. 12th St., 215.925.1166. **Map 1, I6**

U BAR—With its large oval bar and mirrored walls, this a Gayborhood institution regularly draws a lively crowd. Relax with a no-frills brew and some juke box tunes. Daily 11 am-2 am. www.ubarphilly.com. 1220 Locust St., 215.546.6660. **Map 1, I6**

Gentlemen's Club

DELILAH'S—"America's #1 Gentlemen's Club" features "The World's Most Beautiful Showgirls." Find a complimentary after-work buffet, happy-hour specials and free cover with hotel room key or game day ticket stub. Free parking. M-Sa 11:30 am-2 am, Su 1 pm-1 am. www.delilahs.com. 100 Spring Garden St., 215.625.2800. **Map 1, L2**

Karaoke

THE HAPPY ROOSTER—On Thursday nights at 10 pm, this cheery restaurant welcomes karaoke lovers for some rousing tunes with DJ John. Daily 11:30 am-2 am. www.thehappyrooster.com. 118 South 16th street, 215.963.9311. **Map 1, H5**

YAKITORI BOY—This high-tech karaoke bar in Philly's Chinatown draws a fun crowd. Belt your favorite tunes or rent one of eight private rooms. Call for hours. www.yakitoriboy.com. 211 N. 11 St., 215.923.8088. **Map 1, I4**

Live Music Clubs

BORGATA: MUSIC BOX—This 1,000 seat venue offers intimate access to big name performances by artists from a myriad of genres, from jazz to metal to country to blues. This month: Borgata Comedy Club, various nights **Dec. 3-23**. www.theborgata.com. 1 Borgata Way, Atlantic City, NJ, 866.900.4TIX.

CHRIS' JAZZ CAFE—Live jazz featuring great local and big-name talent, plus a full dinner menu. Check website for full schedule of events. M-F 11 am-2 am, Sa 6 pm-2 am. www.chrisjazzcafe.com. 1421 Sansom St., 215.568.3131. **Map 1, H5**

THE CLEF CLUB OF JAZZ AND THE PERFORMING ARTS—This four-story building, affectionately referred to as "The House That Jazz Built," was formed by a music union in the mid-20th century and has been the hangout of such famous members as John Coltrane, Nina Simone and Ella Fitzgerald. It has a large concert hall and boasts an elegant bar on the second floor, which overlooks a stage and tables. www.cleclubofjazz.org. 738 S. Broad St., 215.893.9912. **Map 1, H7**

JOHNNY BRENDA'S—Catch locally and nationally renowned indie rock acts almost every night at this hipster hangout in the up-and-coming Fishtown neighborhood. The venue is upstairs from a tavern that features upscale pub grub. This month: Clap Your Say Yeah "Some Loud Thunder" 10th Anniversary Tour Night Two, **Dec. 1**; Whose Hat Is This (Members of Tedeschi Trucks Band), **Dec. 5**; Boom Tube DJs Explore Deep Pop Cuts, **Dec. 6**; Foreign Air SHAED, **Dec. 7**; Kwaku Collins, **Dec. 9**; Daedalus: Antidote Tour, **Dec. 13**; Neil Hamburger, **Dec. 14**; Muscle Tough, **Dec. 15**; Dai Burger, **Dec. 16**; New Year's Eve With The Districts, **Dec. 30-31**. www.johnnybrendas.com. 1201 N. Frankford Ave., 215.739.9684. **Map 1, L1**

TIME—This groovy three-in-one venue features a chandeliered lounge with live jazz, a cozy whiskey bar and a second-floor dance club reminiscent of absinthe-fueled hangouts of old Paris. "Trombo Piccolo with Chris Farrell and Company," **Every M**; "Open Mic," **Every Tu**; "Midtown Jazz Jam with Tim Brey," **Every Su**. Daily 5 pm-2 am. www.time-restaurant.net. 1315 Sansom St., 215.985.4800. **Map 1, H5**

WARMADDY'S—This South Philly blues and jazz club offers a casual, relaxed atmosphere, live entertainment nightly and classic southern cuisine. Tu-Th 5 p.m.-11 pm, F till midnight, Sa 1 p.m.-midnight, Su 10:30 am-3 pm and 4 pm-11 pm. www.warmdaddys.com. 1400 S. Columbus Blvd., 215.462.2000. **Map 3, G2**

WORLD CAFE LIVE—There's always something happening at this University City venue and restaurant, featuring local and national acts on two stages and frequent open mics and jam sessions. Ticket prices and show times vary. F from 11 am, Sa-Th from 5 pm. This month: Sarah Leaf, **Dec. 1**; Aaron West and The Roaring Twenties, **Dec. 2**; The Philadelphia Moth Storyslam, **Dec. 4**; Jake Bugg, **Dec. 6**; Shooter Jennings and Jason Boland, **Dec. 8**; Hiss Golden Messenger, **Dec. 9**; Mary Scholz, **Dec. 10**; Juanita Stein, **Dec. 13**; Leif Vollebakk, **Dec. 16**; Monday Jazz Jam, **Dec. 18**; Steal Your Peach, **Dec. 22**; Bilal, **Dec. 29**; Darla, **Dec. 31**. www.philly.worldcafelive.com. 3025 Walnut St., 215.222.1400. **Map 1, E5**

Nightclubs

BLEU MARTINI—Specializing in more than 30 different martinis, this swanky bar is located in the heart of Old City's bustling nightlife strip. Daily 4 pm-2 am. www.bleumartiniphilly.com. 24 S. Second St., 215.940.7900. **Map 1, K5**

CUBA LIBRE RESTAURANT & RUM BAR—Also a popular restaurant, Cuba Libre boasts a lively fiesta on weekends. Professional Latin dancers join the crowd on Fridays and Saturdays. Call for hours. www.cubalibrerestaurant.com. 10 S. Second St., 215.627.0666. **Map 1, K5**

ZEE BAR—A spacious-yet-intimate members-only club that takes the concept into a stratosphere of unprecedented luxury. Members enjoy extended hours, VIP spaces, bottle service and more. W-Sa, 10 pm-3 am. www.zee-bar.com. 100 Spring Garden St., 215.922.2994. **Map 1, L2**

Theater

BRISTOL RIVERSIDE THEATRE—Founded in 1984, Bristol Riverside Theatre is a state-of-the-art, riverfront theater in the Philadelphia countryside of Bucks County. This month: "An American Christmas Songbook," **Dec. 7-17**. www.brtstage.org. 120 Radcliffe St., Bristol, Pa., 215.785.0100.

FORREST THEATRE—A few blocks from the Pennsylvania Convention Center, this elegant, historic theater hosts touring Broadway shows and the city's best theater and dance productions. This month: "The Color Purple," **Dec. 12-17**. www.forrest-theatre.com. 1114 Walnut St., 800.447.7400. **Map 1, I5**

FRINGE ARTS—Housed within a vintage 1903 pumping station beneath the Benjamin Franklin Bridge, Fringe Arts features a 232-seat theater, outdoor plaza and restaurant La Peg, which serves up a casual brasserie-style menu. Expect world-class



international artists and cutting edge performances from this contemporary arts collaborative. www.fringearts.com. 140 N. Columbus Blvd., 215.413.9006. **Map 1, L4**

HEDGEROW THEATRE—This theater located in the suburbs of Philadelphia offers a mix of traditional and experimental repertory productions, in addition to collaborations with other theaters. This month: Charles Dickens' "A Christmas Carol," **Dec. 1-24**. www.hedgerowtheatre.org. 64 Rose Valley Road, Rose Valley, Pa., 610.565.4211.

KIMMEL CENTER FOR THE PERFORMING ARTS—This elegant entertainment complex houses multiple stages in the hub of Philadelphia's Avenue of the Arts. This month: John Mulaney: Kid Gorgeous, **Dec. 1**; A Soulful Christmas, **Dec. 12**; An Evening with Brian Reed, Creating S-Town, **Dec. 17**; Stomp, **Dec. 26-31**. www.kimmelcenter.org. 300 S. Broad Street, 215.670.2300. **Map 1, H6**

LANTERN THEATER COMPANY—The Lantern's productions evoke thoughtful discussion long after the plays have ended. This month: "The Craftsman," **Dec. 1-10**. www.lanterntheater.org. St. Stephen's Theater, 10th and Ludlow streets, 215.829.0395. **Map 1, I5**

DRINK SPECIALS
MON-FRI 4-7PM

COMPLIMENTARY BUFFET
7 DAYS A WEEK FROM 5-7PM

EXPRESS LUNCH SPECIALS
MON-FRI 11:30AM-3PM

FREE ADMISSION
WITH HOTEL KEY
OR GAME DAY TICKET STUB

DELILAH'S
THE GENTLEMEN'S CLUB & STEAKHOUSE

100 SPRING GARDEN STREET • PHILADELPHIA
FREE PARKING • FULL MENU/LATE NIGHT DINING
215.625.2800 • WWW.DELILAHS.COM



MAP 1 PHILADELPHIA DOWNTOWN WEST



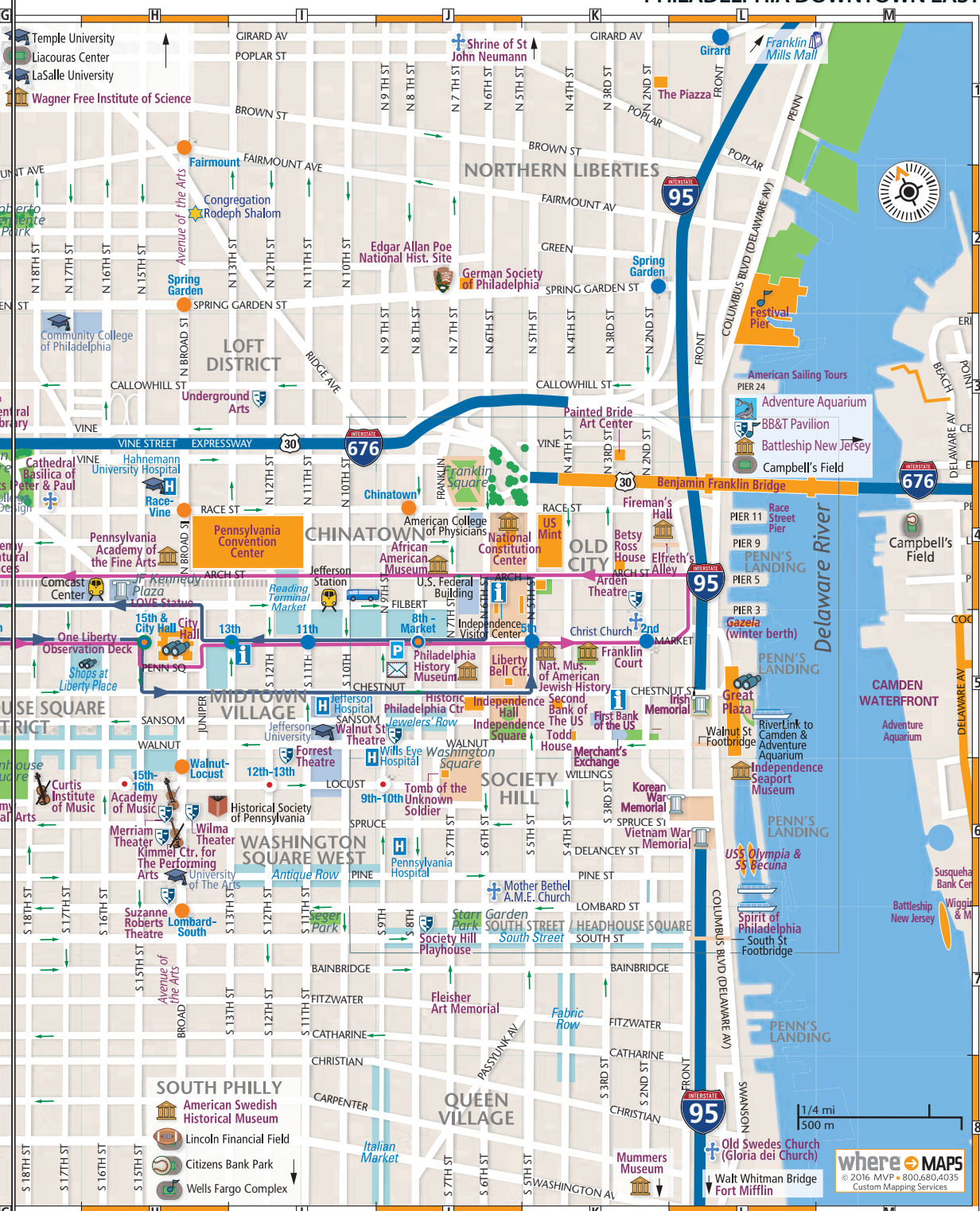
LEGEND

Tourist Information	Shopping Area	Trolley Route
Places of Interest	Bike Route	Market Line
Museum/Gallery	Pedestrian Area	Broad St Line
Theater/Performing Arts	Library	PATCO Line
Concert Hall	University	Bus Rt 38
	National Park	Bus Rt 48

Philadelphia International Airport



PHILADELPHIA DOWNTOWN EAST



LEGEND

Tourist Information	Shopping Area	Trolley Route
Places of Interest	Bike Route	Market Line
Museum/Gallery	Pedestrian Area	Broad St Line
Theater/Performing Arts	Library	PATCO Line
Concert Hall	University	Bus Rt 38
	National Park	Bus Rt 48

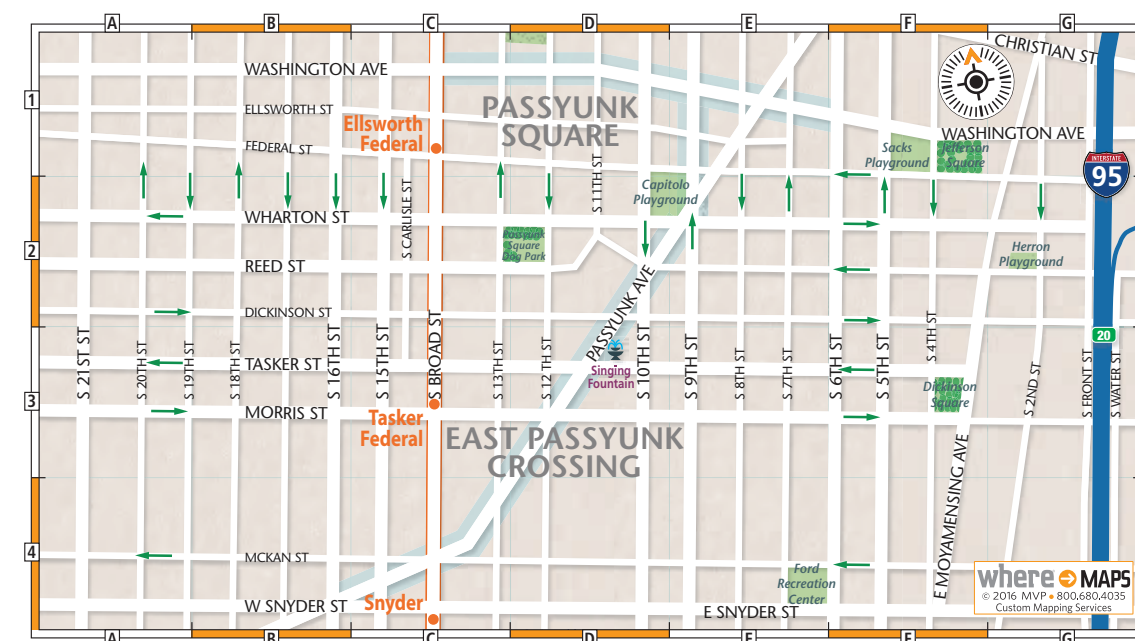
Philadelphia International Airport



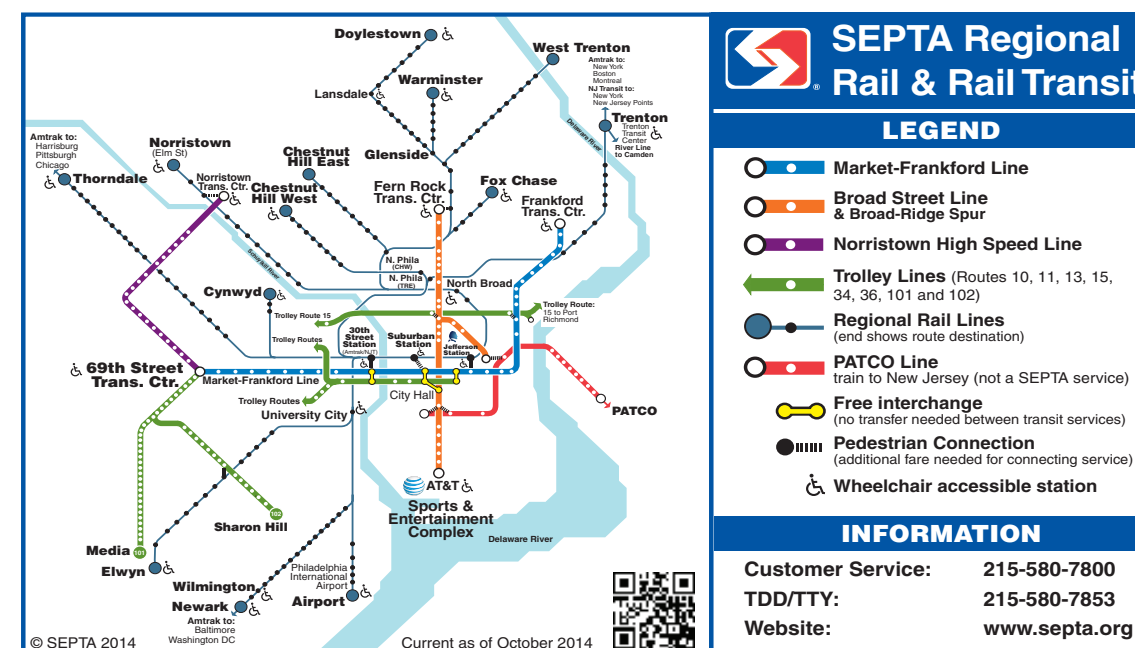
MAP 2 PHILADELPHIA HISTORIC AREA



MAP 3 PHILADELPHIA SOUTH OF WASHINGTON AREA



MAP 5 PHILADELPHIA SEPTA



Hop on and off at **22 locations** from the Delaware River Waterfront to Fairmount Park, to explore Philadelphia's most popular attractions. **HERE ARE JUST A FEW:**



**STOP
1**

DELAWARE RIVER WATERFRONT

Visit Blue Cross RiverRink Winterfest, a Philly holiday tradition with an outdoor ice skating rink, fire pits, cabins, and more!



**STOP
3 & 21**

NATIONAL MUSEUM OF AMERICAN JEWISH HISTORY

Located on historic Independence Mall, the National Museum of American Jewish History features the more than 360-year history of Jewish life in America. The Museum invites visitors of all backgrounds to share their own stories and reflect on how their histories and identities shape and are shaped by the American experience.



**STOP
9**

EASTERN STATE PENITENTIARY

With grand architecture and strict discipline, Eastern State Penitentiary was the world's first true "penitentiary," a prison designed to inspire penitence, or true regret. Its vaulted, skylit cells once held many notorious criminals. Tours include the cell blocks, Al Capone's Cell, artist installations, and an audio tour narrated by actor Steve Buscemi.



**STOPS
11 & 15**

PHILADELPHIA MUSEUM OF ART

We are Philadelphia's art museum. A landmark building. A world-renowned collection. A place that welcomes everyone. We connect people with the arts in rich and varied ways, making the experience of the Museum surprising, lively, and always memorable.



**STOPS
12 & 14**

PHILADELPHIA ZOO

Animals are on the move like never before at Philadelphia Zoo with Zoo360, a revolutionary system of see-through trails passing through treetops, crossing over pathways and connecting habitats, giving animals amazing opportunities to travel and explore. Now when you move around the Zoo, the Zoo moves around you – only at Philadelphia Zoo.



**STOP
13**

PLEASE TOUCH MUSEUM®

Recognized as one of the nation's top children's museums, Please Touch Museum offers children and families interactive exhibits, hands-on programming, original theatrical performances, art-making creative spaces and more, all included with general admission! Don't miss *Daniel Tiger's Neighborhood: A Grr-fic Exhibit*, on view through January only.



**STOP
19**

ONE LIBERTY OBSERVATION DECK

One Liberty Observation Deck is Philadelphia's tallest observation deck featuring 360° views of historic Philadelphia, morning, noon and night! Enjoy a top-down look at iconic sights, breathtaking views, free guided tours and learn about the music, sports and culture that makes the City of Brotherly Love unlike any other.



**STOP
22**

MUSEUM OF THE AMERICAN REVOLUTION

The Museum of the American Revolution brings to life the events, people, and ideals of our nation's founding. Through Revolutionary-era artifacts, immersive environments, and theater experiences, visitors will experience the story of the Revolution from its origins to its continuing relevance.

SIGHTSEEING TOURS OF PHILADELPHIA

Frequent departures from 5th & Market Streets (N.E. Corner)

Philadelphia
TROLLEY WORKS
and
76 CARRIAGE
COMPANY



Trolley Tours

- 1 Day, 2 Day or 3 Day pass
- 27 Stops
- 90+ Min. Daily Tours

Carriage Tours
Private Coaches
Daytime Tours
Evening Rides



BIG
BUS

• PHILADELPHIA •

The double-decker bus tours provide amazing views of the City!

- Hop on Hop Off
- 27 Stops
- 1 Day, 2 Day or 3 Day pass

Call for a FREE shuttle pick up from Airport and Center City hotels

Now available in foreign languages



TICKETS SOLD AT 5TH & MARKET, ALL VEHICLES AND PHILLYTOUR.COM

Certificate of Excellence
2016 WINNER

Check out our Specialty Tours

Philly
by
Night

8pm Departures from
12th and Filbert Streets

FRANKLIN'S
FOOTSTEPS
WALKING
TOURS

Amish Country
Private City Tours
Ghost Tours
Combo Tours
and More!

Certain Tours are operated seasonally

215-389-TOUR (8687) | phillytour.com