

Live Smart. Live Iconic.  
Live Philadelphia.



Philadelphia - where modern luxury meets historic elegance. From our exquisitely preserved 18th century brick row-houses, to the luxury amenities offered in the newest modern high-rises, discover what it's like to LIVE in Philadelphia.



JASON KRAVITZ

c. 267.324.4141 | o. 215.735.2225  
RealtorJK@Gmail.com | www.RealtorJK.com  
1631 Locust Street Suite 300, Philadelphia, PA 19103

Each Office is Independently Owned & Operated.

Top Real Estate Agent at Kurfiss Sotheby's International Realty Philadelphia



APRIL 2018  
THE COMPLETE GUIDE TO GO®

# Philadelphia where

wheretraveler.com

## RINGING IN SPRING

Signs of the season are sprouting  
up everywhere you look



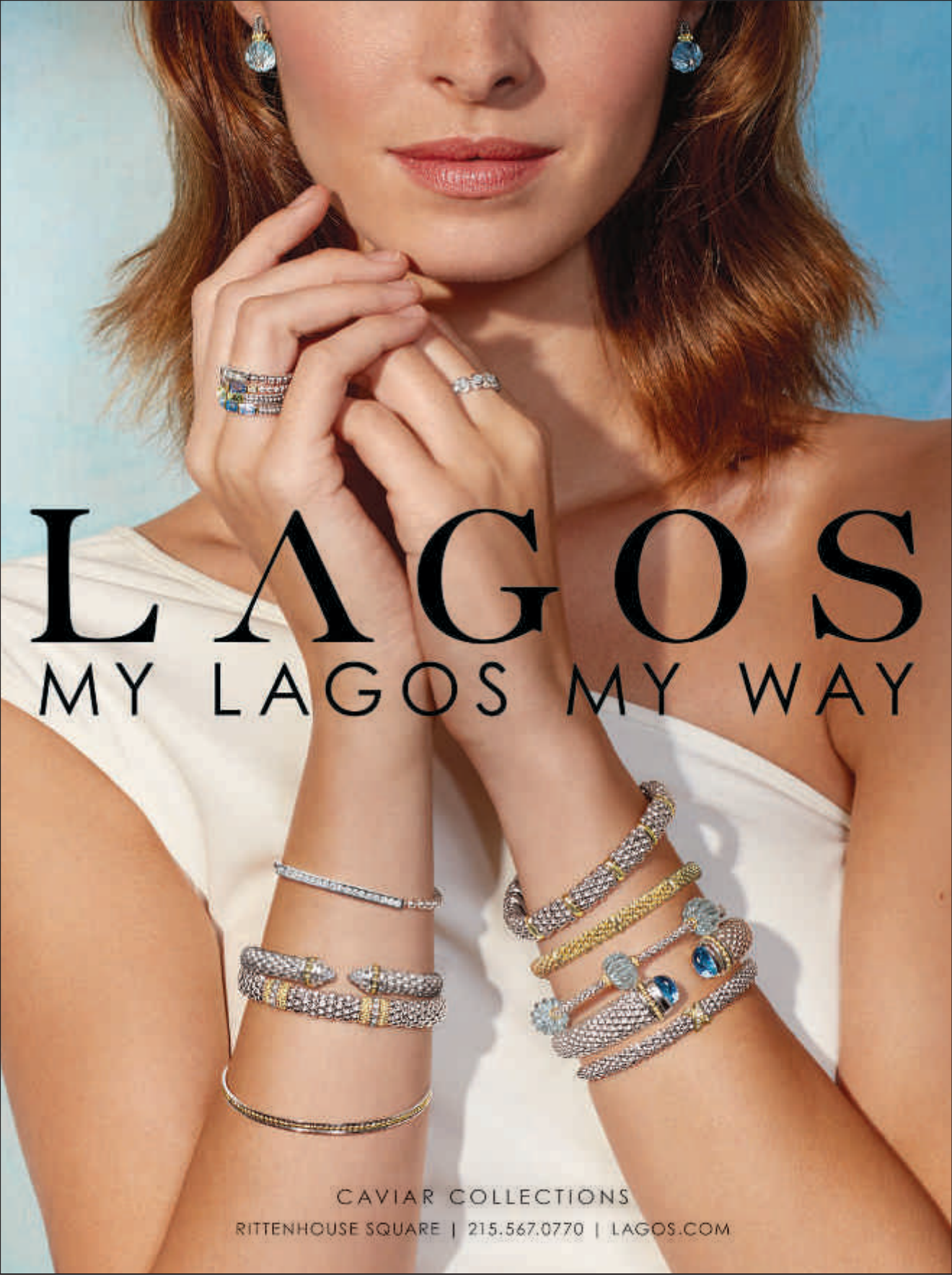
BOHO SHOPS,  
CAFES & YOGA  
CENTERS



EARTH DAY  
DINING ALL  
AROUND TOWN



90 MINUTES  
AT THE BARNES  
FOUNDATION



# LAGOS

MY LAGOS MY WAY

CAVIAR COLLECTIONS  
RITTENHOUSE SQUARE | 215.567.0770 | LAGOS.COM

CONTENTS

SEE MORE OF PHILADELPHIA AT [WHERETRAVELER.COM](http://WHERETRAVELER.COM)

### the plan

#### 02 Editor's Itinerary

The essential things to see and do in Philadelphia, including a 90-minute visit to one of the country's top art museums.

#### 04 Where Calendar Hot Dates This Month

Top things to do in April.



#### 40 Philadelphia Your Way

Curated suggestions for sports fanatics, families with kids in tow and outdoorsy types.



#### ON THE COVER

The Liberty Bell as seen from Independence National Historical Park.  
©ROMAN BABAKIN/ISTOCK

#### CONNECT WITH US



READ US ON MAGZTER



### where now

#### 10 Free Spirits

Modern sites channel this founding city's wild child vibe in gardens, cafes and boho boutiques. **BY REGAN STEPHENS**

#### 12 At Table With Mother Earth

Restaurants all around town go green with sustainable practices, natural surroundings and, of course, good food. **BY BETH D'ADDONO**

### the guide

#### 14 SHOPPING

Top spots to shop, from department stores to independent boutiques

#### 20 GALLERIES & ANTIQUES

Paintings, photography, sculptures, antiques, plus exhibitions to see now

#### 22 MUSEUMS & ATTRACTIONS

Must-see sites including science museums, historic places and observatories

#### 26 DINING

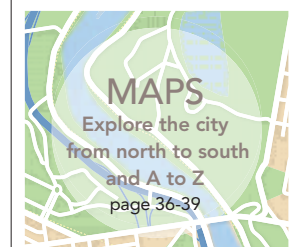
Tasty Philly restaurants, from fine dining to fast casual, in 16 neighborhoods

#### 32 ENTERTAINMENT

Fun bars, hip lounges, world-class theater and many more ways to enjoy the arts

#### 35 NAVIGATE

Guidance for finding your way around town: transportation, information centers and tours



NEWS TO TRAVEL BY

## Essential Philadelphia



It's finally spring, and we're basking in nature's beauty. Part of doing so means digging in at any of the city's fine restaurants, many of which reap the bounty of nearby farms. Raise a glass to Earth Day (April 22) with some of our favorites, where sustainability is always the daily special (see page 12). This season also appeals to the city's innate independent spirit. That vibe manifests today in shops, cafes and yoga studios channeling inner wild child (see page 10). But if you have only limited time, we can help. This month, check out one of the city's best hubs for art.

### 90 MINUTES IN: The Barnes Foundation

This world-class art museum has been around for some time, but it's been in its current location on the Benjamin Franklin Parkway only since 2012. That year, the collection moved from its longtime home in Merion, Pennsylvania, where founder Dr. Albert Barnes lived with his wife.

The museum now sits in a 4.5-acre park-like setting anchored by a 40-foot abstract sculpture by Ellsworth Kelly and a main building that's LEED Platinum-certified, the first major arts and education center in the U.S. to receive the designation. One of its main features is the use of natural light, which casts the galleries throughout in a warm glow while reducing electricity use.

Though the outside is stunning, the inside is just as impressive. After all, the trove is one of the best in the country, with icons including



Cezanne, Matisse, Picasso, Modigliani and Renoir well represented. Indeed, the Barnes claims the largest single holding of Renoir in the world. As such, works by those masters shouldn't be missed. But visitors should also be sure to check out works by Horace Pippin. A self-taught African-American painter born in West Chester,

Pennsylvania, he used his left arm to guide his injured right arm in carving images onto wood and then applying paint to works depicting intimate scenes from his childhood. About 140 of Pippin's works exist, four of which are housed here.

Dr. Barnes also kept an influential array of African sculpture and Native American crafts, rounding out this intriguing collection. For details, see page 22.

**W** Get going! Explore the city at [wheretotravel.com](http://wheretotravel.com).

### where® in the world

Where is an international network of magazines first published in 1936 and distributed in over 4,000 leading hotels in more than 50 places around the world. Look for us when you visit any of the following cities, or plan ahead for your next trip by visiting us online at [wheretotravel.com](http://wheretotravel.com).

**UNITED STATES** Alaska, Atlanta, Baltimore, Boston, Charleston, Charlotte, Chicago, Dallas, Indianapolis, Jacksonville/St. Augustine/Amelia Island, Las Vegas, Los Angeles, Maui, Miami, Minneapolis/St. Paul, New Orleans, New York, Oahu, Orange County (CA), Orlando, Philadelphia, Phoenix/Scottsdale, San Diego, San Francisco, Seattle, St. Louis, Tampa, Tucson, Washington, D.C. **ASIA** Hong Kong, Macau, Singapore **AUSTRALIA** Brisbane, Gold Coast, Melbourne, Sydney **CANADA** Calgary, Canadian Rockies, Edmonton, Halifax, Muskoka/Parry Sound, Ottawa, Toronto, Vancouver, Victoria, Whistler, Winnipeg **EUROPE** Berlin, Budapest, Istanbul, London, Madrid, Milan, Moscow, Paris, Rome, St. Petersburg

## Uncover the Story Behind the Science

### Science History Institute



Chemistry · Engineering · Life Sciences

315 Chestnut Street  
Philadelphia, PA 19106

**Museum Hours:**  
Tuesday–Saturday  
10:00 a.m.–5:00 p.m.  
**Free Admission**

[sciencehistory.org](http://sciencehistory.org)



(FROM TOP) ©ANNE KIM-DANNIBALE; ©R. KENNEDY FOR VISIT PHILADELPHIA™

YOUR TRAVELING COMPANION SINCE 1936®

**where®**  
PHILADELPHIA

Member of the **M** Morris Media Network

PUBLISHER **Rick Kestenbaum**  
EDITOR **Anne Kim-Dannibale**  
EDITORIAL ASSISTANT **Alexander Oliveira**

ADVERTISING & CIRCULATION  
ASSOCIATE PUBLISHER **Brenda Mendte**  
CIRCULATION AND COMMUNICATIONS MANAGER  
**Zach Santo**

EDITORIAL & DESIGN  
ART DIRECTOR **Dusty Martin**  
CONTRIBUTING WRITERS **Beth D'Addono,**  
**Regan Stephens**

#### MORRIS VISITOR PUBLICATIONS

MVP | EXECUTIVE  
PRESIDENT **Donna W. Kessler**  
CHIEF FINANCIAL OFFICER **Dennis Kelly**  
VICE PRESIDENT, OPERATIONS **Angela E. Allen**  
HEAD OF DIGITAL **Richard H. Brashear II**  
REGIONAL VICE PRESIDENT, SALES  
**Kristen Standish**  
DIRECTOR OF CIRCULATION **Scott Ferguson**

MVP | CREATIVE  
CHIEF CREATIVE OFFICER **Haines Wilkerson**  
EDITORIAL DIRECTOR **Margaret Martin**  
DIRECTOR OF PHOTOGRAPHY **Isaac Arjonilla**  
CREATIVE COORDINATOR **Beverly Mandelblatt**

MVP | NATIONAL SALES  
VICE PRESIDENT, NATIONAL INTEGRATED SALES  
**Rebekah Valberg**  
VICE PRESIDENT, NATIONAL MARKETING  
**Adeline Tafuri Jurecka**  
MANAGER, NATIONAL INTEGRATED SALES  
**David Gately**

MVP | PUBLICATION SERVICES  
PUBLICATION SERVICES DIRECTOR **Karen Fralick**  
PUBLICATION SERVICES MANAGER **Cher Wheeler**  
DIGITAL IMAGING **Erik Lewis**

MVP | MANUFACTURING & TECHNOLOGY  
DIRECTOR OF MANUFACTURING **Donald Horton**

E-mails for all of the above except contributors:  
[firstname.lastname@morris.com](mailto:firstname.lastname@morris.com)

### MVP

Morris Visitor Publications

MVP | PHILADELPHIA  
1455 Pennsylvania Ave., NW, Suite 457,  
Washington, DC 20004, 202.349.9858

MORRIS COMMUNICATIONS  
CHAIRMAN **William S. Morris III**  
PRESIDENT & CEO **William S. Morris IV**

#### wheretotravel.com

Where® magazine is produced by Morris Visitor Publications (MVP), a division of Morris Communications Co., LLC, 725 Broad St., Augusta, GA 30901, [morrismedianetwork.com](http://morrismedianetwork.com). Where magazine and the where® logo are registered trademarks of Morris Visitor Publications. Where makes every effort to ensure the accuracy of the information it publishes, but cannot be held responsible for any consequences arising from errors or omissions. All rights reserved. Reproduction in whole or in part strictly prohibited.



**BEST STEAKS.  
EPIC DESSERTS.  
LOCAL FLAVOR.  
FREE PARKING.**

ONE OF AMERICA'S BEST STEAKHOUSES  
IS RIGHT HERE IN PHILLY.



**SUGAR  
HOUSE  
CASINO**

FREE SELF-PARKING ON N. DELAWARE AVE. 1 MILE NORTH OF THE BEN FRANKLIN BRIDGE

@ SUGARHOUSECASINO.COM

GAMBLING PROBLEM? CALL 1-800-GAMBLER



# HOT DATES

## APRIL 5: Phillies Home Opener

It's been 10 years since the Philadelphia Phillies won a World Series title, and once again this year, the team takes to the diamond looking to be crowned champions at season's end. Toward that goal, diehard fans cheer on their hometown heroes, led by rising star players Rhys Hoskins, Nick Williams and Jorge Alfaro, in an opener pitting the team against their National League East rivals, the Miami Marlins. Let's play ball! *Ticket prices vary. 3:05 pm. Citizens Bank Park, 1 Citizens Bank Way, 215.463.1000, [www.phillies.com](http://www.phillies.com)*

Subaru Cherry Blossom Festival



**W** For a full calendar of events, go to [wheretraveler.com/philadelphia/local-events](http://wheretraveler.com/philadelphia/local-events)

## 6 Great Things Not to Be Missed

### 1 "NOISES OFF" > THROUGH APRIL 29

The foibles of theater folk draw big laughs. \$20-\$87. Times vary. *Walnut Street Theatre, 825 Walnut St., 215.574.3550, [walnutstreettheatre.org](http://walnutstreettheatre.org)*

### 2 JERRY SEINFELD > APRIL 7

The legendary comic takes the stage. From 7:00-9:30 pm. *Academy of Music, 240 S. Broad St., 215.893.1999, [kimmelcenter.org](http://kimmelcenter.org)*

### 3 NIGHT SKIES > APRIL 10

Chief astronomer Derrick Pitts leads this hands-on exploration of the heavens. \$10. 7 pm. *The Franklin Institute, 222 N. 20th St., 215.448.1200, [fi.edu](http://fi.edu)*

### 4 ARRESTED DEVELOPMENT > APRIL 12

The Grammy-winning '90s hip-hop group reunites for the 25th anniversary of their debut album. \$32. 8:30 pm. *World Cafe Live, 3025 Walnut St., 215.222.1400, [worldcafelive.com](http://worldcafelive.com)*

### 5 DINING OUT FOR LIFE > APRIL 19

A portion of proceeds from indulging in tasty cuisine around town goes toward helping locals living with HIV/AIDS. For participating restaurants, visit [diningoutforlife.com/philadelphia](http://diningoutforlife.com/philadelphia)

### 6 PENN RELAYS CARNIVAL > APRIL 26-28

Top athletes sprint into the 124th year of the world's oldest meet, held at Franklin Field. Prices/times vary. *University of Pennsylvania, 233 S. 33rd St., 215.898.6145, [thepennrelays.com](http://thepennrelays.com)*

## TOP SPOTS

This month, festivals from spring-themed to geeky offer a varied bouquet of things to do all around town.

### APRIL 7-15

#### SUBARU CHERRY BLOSSOM FESTIVAL

This annual rite of passage transports revelers to Japan, with live music, food and arts and crafts against a picturesque backdrop of pale pink and white blossoms. Most events free. *Times/venues vary, [subarucherryblossom.org](http://subarucherryblossom.org)*

### APRIL 20-28

#### PHILADELPHIA SCIENCE FESTIVAL

Fun hands-on activities, thought-provoking lectures, eye-opening exhibitions and more channel your inner nerd at this citywide celebration of smarts. Most events free. *Times/venues vary, [philasciencefestival.org](http://philasciencefestival.org)*

### APRIL 27-MAY 5

#### PHILLY TECH WEEK

Some of the brightest minds in technology descend on the city to share ideas, get inspired and let loose. Prices vary. *Times/venues vary, 2018, [phillytechweek.com](http://phillytechweek.com)*

### APRIL 29

#### EL CARNAVAL DE PUEBLA

Paraders dressed in oversized, ornately decorated masks and colorful costumes take to South Philly in this authentic Cinco de Mayo festival remembering the 1862 Battle of the Pueblo during the second Franco-Mexican War. Free. 8 am-6 pm, [facebook.com/sanmateo carnalero](http://facebook.com/sanmateo carnalero)

(FROM TOP) BRIAN SCHWENK/FLICKR, CREATIVE COMMONS; ©SHINYA SUZUKI/FLICKR, CREATIVE COMMONS; ©MARK SELIGER 2016



Rock out to the hottest acts at the new Xcite Center. Try your luck at any one of our 3,300 slots. You'll have a night to remember at Parx. **The best is better than ever.**

[parxcasino.com](http://parxcasino.com)

**parx**  
casino  
What a night!

Street Road Exit off I-95 or PA Turnpike  
GAMBLING PROBLEM? CALL 1.800.GAMBLER



# How to Eat Like a Local

PRESENTED BY PAT'S KING OF STEAKS

● No visit to Philadelphia would be complete without a visit to the birthplace of the cheese steak sandwich, Pat's King of Steaks®. Sure, there are lots of places in Philly to get a cheesesteak, but only Pat's gives you the authentic experience that locals have lined up for since 1930.

1237 E. PASSYUNK AVENUE (AT 9TH & WHARTON)  
PATSKINGOFSTEAKS.COM • #ORIGINATOR

LOCATIONS: CHEESESTEAK, FRANKIE OLIVERI, SPRINGDALE PHOTOGRAPHY

LIKE A LOCAL  
"WHIZ WIT"



ADVERTISEMENT

## How to Order Like a Local

DON'T SAY DO SAY

Good afternoon, I would like the sandwich that you are most famous for, the one with steak and Cheez Whiz and onions. Can I please have one of those?

Whiz Wit

Would it be at all possible to have that without onions?

Whiz Wit-Out

I'll take a cheesesteak, without the cheese, but with onions.

Plain Wit

On second thought, no onions.

Plain Wit-Out

Hmmm...I'd like a cheesesteak with...um, hmmm...which cheese do I want?

"Provolone Wit" or "Provolone Wit-Out" or "American Wit" or "American Wit-Out" or "Pizza Wit" or "Pizza Wit-Out"

Chef and third generation Pat's owner Frankie Oliveri, as seen on Food Network, Travel Channel, Spike and more



● Want mushrooms and/or peppers? Want to try our Roast Pork, Hot Dogs or Fish Cakes? Just ask any way you want! Pay with cash, grab your sandwich, then step to the other window for fries and drinks. Got it? Great! You're now an honorary local. See you at Pat's!

# SIGHTSEEING TOURS OF PHILADELPHIA

Frequent departures from 5th & Market Streets (N.E. Corner)

*Philadelphia*  
TROLLEY WORKS  
and  
**76** CARRIAGE  
COMPANY



## Trolley Tours

- 1 Day, 2 Day or 3 Day pass
- 27 Stops
- 90+ Min. Daily Tours

**Carriage Tours**  
Private Coaches  
Daytime Tours  
Evening Rides



**BIG BUS**

• PHILADELPHIA •

The double-decker bus tours provide amazing views of the City!

- Hop on Hop Off
- 1 Day, 2 Day or 3 Day pass
- 27 Stops

Call for a FREE shuttle pick up from Airport and Center City hotels

Now available in foreign languages



TICKETS SOLD AT 5TH & MARKET, ALL VEHICLES AND [PHILLYTOUR.COM](http://PHILLYTOUR.COM)

Certificate of Excellence  
2016 WINNER

Check out our Specialty Tours

**Philly by Night**  
8pm Departures from  
12th and Filbert Streets

215-389-TOUR (8687) | [phillytour.com](http://phillytour.com)

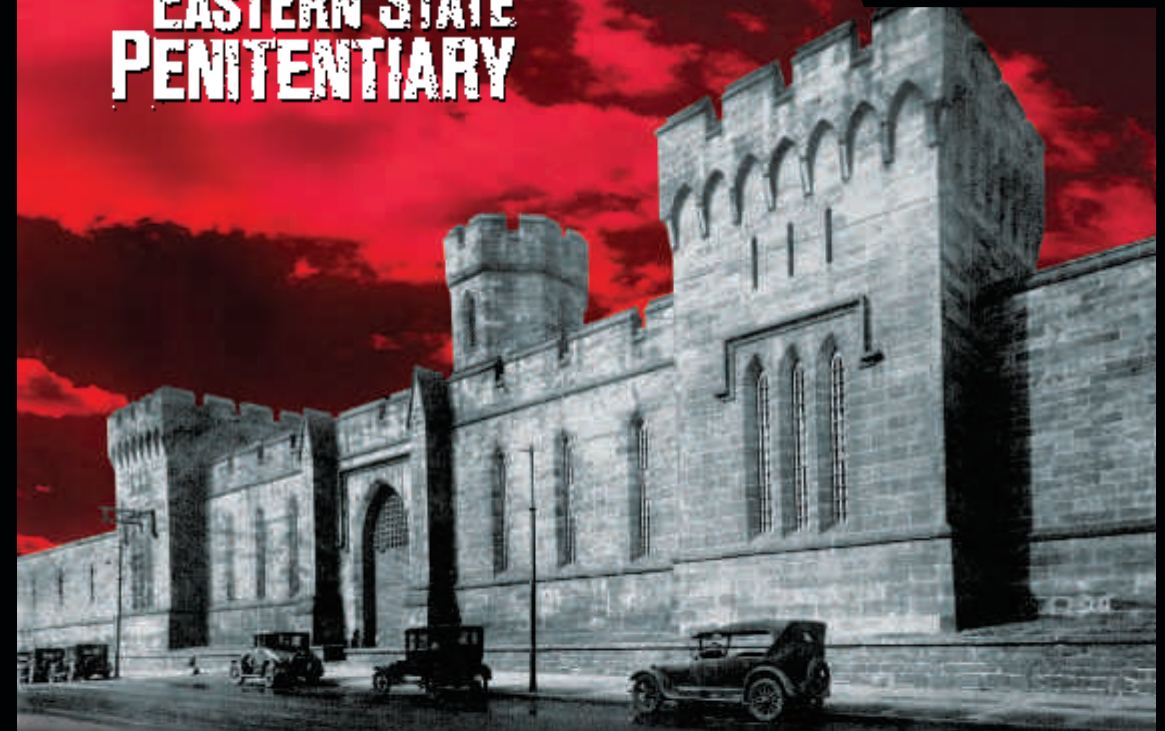
**FRANKLIN'S  
FOOTSTEPS  
WALKING  
TOURS**



Amish Country  
Private City Tours  
Ghost Tours  
Combo Tours  
and More!

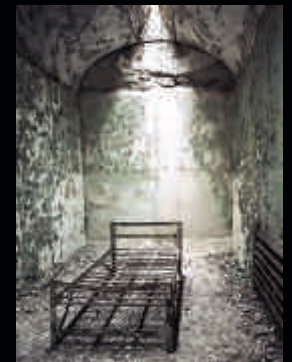
Certain Tours are operated seasonally

## EASTERN STATE PENITENTIARY



Explore America's Most Historic Prison

A haunting world of crumbling cellblocks and empty guard towers



Tours include the cellblocks, Al Capone's Cell, artist installations, and an audio tour narrated by actor Steve Buscemi.

Open Every Day 10 am to 5 pm • (215) 236-3300 • [www.EasternState.org](http://www.EasternState.org)  
2027 Fairmount Avenue, Philadelphia, PA • Just five blocks from the Philadelphia Museum of Art

Save \$2

Use code WHERE18 at  
[www.EasternState.org](http://www.EasternState.org)

# → Philadelphia where now

The savvy traveler's guide to the City of Brotherly Love

» For more information  
wheretraveler.com

**INSIDER'S GUIDE**  
**Free Spirits**  
Modern sites channel this founding city's  
wild child vibe in gardens, cafes and boho  
boutiques. BY REGAN STEPHENS

Magic Gardens

(FROM TOP) COURTESY CHHAYA CAFE; COURTESY MOON + ARROW; (FACING PAGE) COURTESY MAGIC GARDENS



Chhaya Cafe

## Bohemian Rhapsody

While the City of Brotherly Love is certainly home to mainstream chains and big box outlets, its independent spirit can be found thriving in every neighborhood. (Let's call it the same spirit that was sparked during the American Revolution and endures today.) Take a break from life's hectic pace and explore Philly's most free-spirited shops, cafes, yoga studios and gardens.

### MAGIC GARDENS

What began as artist Isaiah Zagar's mission to beautify his neighborhood is now one of Philly's most beloved art installations. Every inch of the space shimmers with brightly hued mosaics incorporating both tiles and found objects like mirrors, glass bottles and even bicycle wheels. In warmer months, the after-hours Garden Sips offers drinks, music and retro crafts. 1020 South St., 215.733.0390, [phillymagicgardens.org](http://phillymagicgardens.org)

### CHHAYA CAFE

Fittingly, this haven is named for the Sanskrit word meaning "shelter from the sun." The chill space has an impressive coffee

program with fair trade and organic beans by locals like Philly Fair Trade Roasters and Reanimator. Teas and specialty drinks round out the offerings. Try the Heaven Sent Elixir—a soul-soothing blend of honey, ginger, black peppercorn and lemon, which chef/owner Varnana "V" Beuria says was inspired by the concoction her father made whenever she was feeling under the weather. 1819 E. Passyunk Ave., 215.465.1000, [chhayacafe.com](http://chhayacafe.com)

### MOON + ARROW

The apothecary section of this Queen Village boutique is filled with responsibly made beauty products like plant-based body oils, mists and scrubs blended

with organic, fair-trade ingredients that pamper skin and look beautiful in a bathroom to boot. Events and classes like the Natural Skincare Workshop, where participants learn how to make clay face masks, are also popular. 754 S. 4th St., 215.469.1448, [moonandarrow.com](http://moonandarrow.com)

### PALO SANTO

This wellness sanctuary offers a comprehensive selection of holistic workshops, retreats, services and products—massage therapy, herbal or aromatherapy consultations, crystal healing—that are sure to leave you feeling refreshed and totally at peace. 1707 E. Passyunk Ave., 215.952.0360, [palosantowellnessboutique.com](http://palosantowellnessboutique.com)



Moon + Arrow

## At Table with Mother Earth

Considering the environment while eating and drinking can easily be accomplished—by going vegetarian for a day or dining in lush green gardens. **BY BETH D'ADDONO**



## On the Whole

The way chef/owner Marcie Turney of **Barbuzzo** and **Jamonera** (110 & 105 S. 13th St., 215.546.9300) sees it, making use of the whole animal is the ultimate show of eco-respect a chef (or meat eater) can show. That's why she regularly breaks down 200-pound Lancaster farm-raised hogs for her restaurants' Spanish-accented charcuterie, sofrito and ragu. In nearby New Jersey, Cherry Hill's **The Farm and the Fisherman Tavern** (1442 Marleton Pike East, 856.356.2282), chef Joshua Lawler insists on sustainably sourced meat, fish and poultry, sourced from farms in Lancaster County. Traditional whole-animal butchery is happening in the kitchen at **BYOB Russet** (1521 Spruce St., 215.546.1521), under the informed knives of chef/owners Andrew and Kristin Wood. Charcuterie (above) is a house specialty. While the menu changes daily, when available, try the house-cured coppa with blood orange chili oil or bacon-stuffed prime beef flank.

## Gardens of Dining Delights

Beyond a patio or sidewalk table, having a meal in a garden takes alfresco dining to new heights.

### TALULA'S GARDEN

The joy of grazing in a garden has inspired poets and romantics for centuries. Both are welcome at Talula's Garden, where proprietor Aimee Olexy's farm-to-table sensibilities play out against a backdrop of tangled lush greenery and cultured herbs. In the outdoor lounge, ambient heaters take away the occasional chill, while plates overflowing with artisanal cheese and mushroom pâté en croûte warm the soul. 210 W. Washington Sq., 215.592.7787, [www.talulasgarden.com](http://www.talulasgarden.com)

### CITY TAVERN

From the street, you'd never know that City Tavern is home to a hidden gem of a garden, a patioed expanse ideal for enjoying chef/ proprietor Walter Staib's thoughtful take on

Colonial fare. Order the pepper pot soup, a spicy reminder of 18th-century Philadelphia's West Indian influences, best washed down with a local Yards Brewing Company Thomas Jefferson Ale. 138 S. Second St., 215.413.1443, [www.citytavern.com](http://www.citytavern.com)

### M RESTAURANT AT THE MORRIS HOUSE HOTEL

At M at the Morris House Hotel in Society Hill, a walled garden hides goings on from inquisitive eyes, while diners swoon in the shade of fragrant flowering trees. Chef Aaron Bellizzi delivers beautifully composed plates brimming with such seasonal specialties as cherrywood-grilled steelhead trout, with vichyssoise and leeks. 225 S. Eighth St., 215.922.2446, [www.mrestaurantphilly.com](http://www.mrestaurantphilly.com)

### JAMAICAN JERK HUT

Featured in the Cameron Diaz movie "In Her Shoes," this relaxed Caribbean BYOB restaurant is known for its jerk sauce, fresh snapper, curried chicken and a huge lawn perfect for enjoying a spring evening. 1436 South St., 215.545.8644, no website

FROM TOP) ©STARF RESTAURANTS; ©STUART GOLDENBERG



## GO VEG! GO GREEN! Meatless Wonders

These days, going veg is all the rage. Thankfully, plant-based restaurants are sprouting up all around town. Perhaps no spot has done more to put vegan on the map in Philly than stylish **Vedge** (1221 Locust St., 215.320.7500). Here, chef/owner Rich Landau's deft touch is evident in something as simple as a radish, treated five different ways. Diners also can't go wrong with anything from the menu's "dirt list," consisting of dishes with ingredients likely harvested within 24 hours of plating. If a veggie pizza doesn't quite satisfy, how about a seitan cheesesteak or tofu "mozzarella" pie? Both and so much more are on the menu at **Blackbird** (614 N. 2nd St., 267.324.5224), Philly's first (and only) all-vegan pizzeria. Blackbird also satisfies sweet cravings with desserts from Vegan Treats. **P.S. & Co.** (1706 Locust St., 215.985.1706) in Rittenhouse Square serves up an extensive, eclectic menu of vegan dishes (Mohinga soup anyone?), plus organic and raw juices and smoothies in a Pinterest-worthy spot.

## To Market, To Market

Why go to a farmers' market when you can't bring the produce home to your own fridge? Let us count the ways! Chief among them: fabulous food. Soak up the local color at these favorites.

• Feast with your eyes and absorb the colorful tableau of local gastronomic commerce at historic **Reading Terminal Market**. Your appetite will soon emerge, and vendors of everything from homemade sausages to airy pastry step up to fill the void. Aisles of produce, meat and seafood purveyors are bracketed by every manner of deliciousness, from hearty cheesesteaks to sushi rolls and Italian roast pork. 12th and Arch streets, 215.574.0929, [www.readingterminalmarket.org](http://www.readingterminalmarket.org)

• **The Italian Market** in South Philly is a moveable feast, vibrant with hawkers' cries and the smell of espresso. Vendors sell produce daily along the sidewalks, but the shops lining Ninth Street deal in prepared fare. Have a roast pork sandwich at George's, salumi and cheese at Claudio's or Di Bruno Bros., and a Mascarpone-filled cannoli at Isgro Pastic-



ceria. **George's**, 900 S. Ninth St., 215.592.8363; **Claudio's**, 926 S. Ninth St., 215.627.1873, [www.claudiofood.com](http://www.claudiofood.com); **Di Bruno Bros.**, 930 S. Ninth St., 215.922.2876, [www.dibruno.com](http://www.dibruno.com); **Isgro**, 1009 Christian St., 215.923.3092, [www.bestcannoli.com](http://www.bestcannoli.com)

• As you walk the city, you might see weekly markets in parks and squares around town. Many of these markets are operated by **The Food Trust**, a local nonprofit that works to provide access to affordable, nutritious food and runs more than 30 area farmers markets, including such year-round Saturday gatherings as the Clark Park Farmers' Market, at 43rd Street and Baltimore Avenue in University City, and the Fitter Square Market, at 23rd and Pine streets. [www.foodtrustmarkets.org](http://www.foodtrustmarkets.org)

## A SPOT OF GREEN

East Passyunk Avenue in South Philly is a "crooked corridor" and burgeoning restaurant row—the diagonal artery is home to some of the most buzzed about restaurants, including those helmed by James Beard Award nominees. Tucked along the busy street, **Green Aisle Grocery** (1618 East Passyunk Ave., 215.465.1411) is a local gem worth seeking out. The teeny shop, run by brothers Adam and Andrew Erace, is chock-full of farm-grown produce and locally made gifts to take home. Among the goodies you might find? Hummus from



chef Michael Solomonov's modern Israeli Zahav restaurant, gluten-free cinnamon-raisin loaf from **Amaranth Bakery**, and housemade preserves and pickles like brandied pears with cardamom from the store's private label.

# the where guide

## Shopping | April



### Lapstone & Hammer

Only in Philadelphia will you find a high-end, sophisticated sneakerhead haven outfitted by designer Kate Rohrer, which also boasts a mezzanine pop-up area and gallery space. The store's collection of well-tailored menswear, grooming products and accessories have received rave reviews, but what truly commands attention in this

4,000-square-foot space is its extensive footwear collection, highlighting on-trend options from top brands like Nike, Gorilla USA and Timberland. Want more? The shop's extensive blog reveals all things happening in the world of hip kicks. [www.lapstoneandhammer.com](http://www.lapstoneandhammer.com). 1106 Chestnut St., 215.592.9166. **Map 1, I5**



### P's & Q's

With a large inventory of in-demand brands, including Patagonia and Norse Projects, this family-owned and -operated boutique makes an ideal one-stop shop for guys who need to stock up on necessities from hoodies to luggage to shoes. [www.psandqs.com](http://www.psandqs.com). 820 South St., 215.592.0888. **Map 1, J7**

### Apparel - Men

**COMMONWEALTH PROPER**—Expert style consultants work with individuals to create not only custom suits, but also shirts and even casual pieces designed to fit like a glove. By appt. only. M-F 10 am-6 pm, Sa-Su 10 am-4 pm. [www.commonwealthproper.com](http://www.commonwealthproper.com). 1839 Chestnut St., 267.319.1741. **Map 1, G5**

**DAMARI SAVILE**—Eagles safety Malcolm Jenkins and entrepreneur Jay Amin's menswear shop appeals to sharp dressers looking for a bit more detail in their outfits. Their 3,000-square-foot space offers ready-to-wear looks, but also a made-to-measure shop for custom pieces. A whiskey cellar, conference room and kitchen let gents host sartorially inclined events, too. M, Th, Su by appointment. Tu-W & F 10 am-7 pm, Sa 11 am-6 pm. [www.damarisavile.com](http://www.damarisavile.com). 709 Walnut St., 267.218.5760. **Map 1, J5**

**DISTANTE**—Since 1983, this boutique has been offering the latest in business attire and upscale looks, plus custom outfits made in Naples, Italy. By appt. only. Call to reserve. [www.distanteclothing.com](http://www.distanteclothing.com). 1510 Sansom St., 215.545.2850. **Map 1, H5**

**HENRY A. DAVIDSEN**—This tailor and custom clothier located one block from Rittenhouse Square also offers image consulting and ready-to-wear selections, including cufflinks, pocket squares and rounds, ties and more. By appt. only. [www.henrydavidson.com](http://www.henrydavidson.com). 1701 Spruce St., 215.310.0219. **Map 1, G6**

**MY.SUIT**—This New York City made-to-measure has earned raves since setting up in Rittenhouse Square. The shop offers expert measurements, hundreds of fabrics, a two-week turnaround on custom suits and reasonable prices. M-Sa 10 am-7 pm, Su noon-6 pm. [www.mysuit.com](http://www.mysuit.com). 1518 Walnut St., 215.545.3300. **Map 1, H5**

**NUTZ & BOLTZ**—North Wales native Anthony Noce's irreverent Washington Square West shop not only carries underwear and swimsuits, but also clothing by lines like Andrew Christian, Marco Marco and Nasty Pig. M-Sa 11 am-9 pm, Su noon-5 pm. [www.nutzandboltzfashion.com](http://www.nutzandboltzfashion.com). 1220 Spruce St., 267.639.5958. **Map 1, I6**

### Apparel - Men & Women

**BOYDS PHILADELPHIA**—One of the country's largest men's stores and the city's largest designer women's store, this shop showcases the likes of Armani, Gucci, Zegna, Manolo Blahnik and Emilio Pucci. Free custom alterations and free valet parking. M-Sa 9:30 am-6 pm, W 9:30 am-8 pm. [www.boydsphila.com](http://www.boydsphila.com). 1818 Chestnut St., 215.564.9000. **Map 1, G5**

**CHARLIE'S JEANS**—Owner Sebastian McCall's shop focuses on sought-after lines of premium jeans, and was voted Philadelphia Magazine's "Best of Philly 2011" for best denim. M-Sa 11 am-8 pm, Su 11 am-6 pm. [www.charliesjeans.net](http://www.charliesjeans.net). 233 Market St., 215.923.9681. **Map 1, K5**

**CRASH BANG BOOM**—This indie shop just off of South Street specializes in punk rock clothing and accessories for guys and gals alike. Find leather jackets, plaid pants and rock music T-shirts from brands including Lip Service, Tripp NYC and Switchblade, plus studded jewelry, edgy shoes and rock memorabilia. M-Tu noon-7 pm, W-Th till 8 pm, F-Sa till 9 pm, Su till 6 pm. [www.crashbangboom.com](http://www.crashbangboom.com). 528 S. Fourth St., 215.928.1123. **Map 1, K7**

**HATS IN THE BELFRY**—This local chain offers a large selection of men's and women's dress and casual toppers from brands including Korber, Stetson, Giovanni, plus styles from the hat company's own line. M-Sa 10 am-7 pm, W 10 am-8 pm, Su 11 am-6 pm. [www.hatsinthebelfry.com](http://www.hatsinthebelfry.com). 1824 Chestnut St., 215.922.0303. **Map 1, G5**

**LOST + FOUND**—Affordable and trendy clothing, shoes, jewelry and handbags abound at this Old City storefront catering to both men and women. M-Sa 11:30 am-7 pm, Su noon-6 pm. 133 N. Third St., 215.928.1311. **Map 1, K4**

**SOUTH MOON UNDER**—Inside this spacious Center City shop, find hip, casual looks by Citizens of Humanity, FATE, Jules Smith and Trixie & Milo. M-Sa 10 am-7 pm, Su noon-5 pm. [www.southmoonunder.com](http://www.southmoonunder.com). 1731 Chestnut St., 215.563.2298. **Map 1, G5**

### Apparel - Women

**323 ARCH STREET FASHION COLLECTIVE**—This "work/shop" concept is run by designers who create items in house. Shoppers browse a collection of locally made women's clothing, accessories and jewelry, all within view of the studio. Tu-Sa

noon-5 pm. [www.323arch.com](http://www.323arch.com). 323 Arch St., 215.546.5975. **Map 2, D2**

**CACTUS COLLECTIVE**—Located along Fashion Row in Queen Village, this eclectic communal store gives shoppers a taste of Philly's indie style with a mix of vintage and locally made boho clothing, jewelry and gifts. Treasure hunters also score original art in the rotating gallery at the back of the shop. W-M noon-7 pm. 739 S. Fourth St., 267.908.4178. **Map 1, K7**

**ELLELAURI**—Located in the heart of the fashion-forward Rittenhouse Square neighborhood, this chic women's clothing brand is known for offering modern looks in elegant silhouettes and a sophisticated color palette at affordable prices. M-Sa 10 am-7 pm, Su noon-5 pm. [www.ellelauri.com](http://www.ellelauri.com). 114 S. 19th St., 267.457.5939. **Map 1, G5**

**JOAN SHEPP**—With more than 40 years in the biz, Shepp purveys women's designer apparel and accessories from top (but harder-to-find) European and American brands, including Dries van Noten, Rick Owens and Yohji Yamamoto. M-Tu and Th-Sa 10 am-6 pm, W till 8 pm, Su noon-5 pm. [www.joanshepp.com](http://www.joanshepp.com). 1811 Chestnut St., 215.735.2666. **Map 1, H5**

**PLATINUM**—Since 1999, this one-stop shop has been offering high-quality name brand clothing from labels like 7 For All Mankind, Diesel, Lacoste, Scotch & Soda, Hugo Boss and more. Su-M 11:30 am-8 pm, Tu-Th till 9 pm, F-Sa till 10 pm. [www.shopatplatinum.com](http://www.shopatplatinum.com). 526 South St., 215.599.7528. **Map 1, J7**

**SHOP SIXTY FIVE**—Former New York City stylist Linda LaRosa hand-picks pieces from designers like Elizabeth & James, Rag & Bone and RTA, creating an edgy assortment of luxury knitwear, designer denim, occasion dresses and distinctive jewelry with a downtown vibe. M-Sa 11 am-7 pm, Su till 5 pm. [www.shopsixtyfive.com](http://www.shopsixtyfive.com). 128 S. 17th St., 267.239.5488. **Map 1, G5**

**STEEL PONY**—Longtime fashion insiders Joanne Litz and Dennis Wolk offer eco-friendly boho fashions and accessories that you can see being hand-dyed and sewn right in the store. Many items are one-of-a-kind and all are made in Philly with sustainable, locally sourced materials. Visit [www.steelpony.com](http://www.steelpony.com) for store hours. [www.steelpony.com](http://www.steelpony.com). 758 S. Fourth St., 215.467.6065. **Map 1, K7**

**VAGABOND BOUTIQUE**—Located in Old City, this boutique and yarn shop highlights hand-knit sweaters, jumpsuits and crop tops with a bohemian vibe, plus a chic assortment of accessories. M-Sa 11 am-7 pm, Su till 5 pm. [www.vagabondboutique.com](http://www.vagabondboutique.com). 37 N. Third St., 267.671.0737. **Map 1, K4**

### Bath & Beauty

**DUROSS & LANGEL**—Proprietors Steve Duross and James Langel combine old family recipes and modern science to create a signature line of natural soaps, salts, lotions and potions inside their colorful, contemporary apothecary. Ask about classes and workshops. Store: Tu-11 am-7 pm, W-Th till 8 pm, F-Sa 10 am-7 pm, Su noon-5 pm. Check for salon hours. [www.durossandlangel.com](http://www.durossandlangel.com). 117 S. 13th St., 215.834.7226. **Map 1, I5**



(FROM LEFT) COURTESY LAPSTONE & HAMMER; COURTESY P'S & Q'S

**Books & Music**

**ATOMIC CITY COMICS**—This funky shop carries a wide selection of comics, graphic novels, back issues, manga and T-shirts, plus movies, toys and games. Look for frequent in-store events, too, including book signings. Su-Tu noon-9 pm, W-Sa, noon-11 pm. 638 South St., 215.625.9613. **Map 1, J7**

**BOOK CORNER**—Browse more than 50,000 titles at this welcoming shop, located directly behind Philadelphia's Central Library near the Benjamin Franklin Parkway. Find new, rare and gently used tomes in all genres, whether your taste runs contemporary or classic. M-Sa 10 am-6 pm. [www.facebook.com/Book-Corner-22079624193](http://www.facebook.com/Book-Corner-22079624193). 311 N. 20th St., 215.567.0527. **Map 1, G3**

**HEAD HOUSE BOOKS**—Books covering every surface and a friendly staff help create an inviting space for browsing. Enjoy a free cup of coffee and settle in for a few hours. M-Sa 10 am-7 pm, Su till 5 pm. [www.headhousebooks.com](http://www.headhousebooks.com). 619 S. Second St., 215.923.9525. **Map 1, K7**

**JOSEPH FOX BOOKS**—This charming spot in Center City offers an array of selections from architecture and non-fiction to literature and poetry. M-Sa 9:30 am-6 pm, W till 7 pm. [www.foxbookshop.com](http://www.foxbookshop.com). 1724 Sansom St., 215.563.4184. **Map 1, G5**

**Children**

**BORN YESTERDAY**—This boutique on Rittenhouse Square carries clothing and toys for infants and children from a wide range of European and domestic designers. M-Sa 10 am-6 pm, Su 11 am-5 pm. [www.bornyesterdaykids.com](http://www.bornyesterdaykids.com). 1901 Walnut St., 215.568.6556. **Map 1, G5**

**MOMO'S TREE HOUSE**—Wrangling kids into this Old City boutique won't be a hassle—Momo's not only provides toys from hard-to-find specialty makers, but encourages tots to test them out on the spot. M-Th 11 am-6 pm, F 11 am-7 pm, Sa 10 am-7 pm, Su noon-5 pm. [www.momostreehouse.com](http://www.momostreehouse.com). 205 Arch St., 267.457.2803. **Map 1, K4**

**Crafts**

**BEADWORKS**—A large selection of beads, gemstones, tools and notions helps DIYers create their own jewelry with the help of knowledgeable staff. Su-W and F, noon-6 pm, Th and Sa 11 am-7 pm. [www.beadworkphiladelphia.com](http://www.beadworkphiladelphia.com). 619 E. Passyunk Ave., 215.413.2323. **Map 1, K7**

**LOOP**—This colorful store offers natural fiber, hand-painted and luxury yarns for knitting and crocheting. The shop also carries a full range of patterns, needles and notions and offers classes for all skill levels. M-F 11 am-6 pm, Sa-Su 11 am-5 pm. [www.loopyarn.com](http://www.loopyarn.com). 1914 South St., 215.893.9939. **Map 1, G7**

**RITTENHOUSE NEEDLEPOINT**—With 1,100 square feet of space, this shop carries all manner of tools and notions for needlepoint, including hand-painted canvases, top-quality fibers, accessories, books and even finished items. Tu-Sa 10:30 am-5:30 pm. [www.rittenhouseneedlepoint.com](http://www.rittenhouseneedlepoint.com). 1737 Chestnut St., 2nd Floor, 877.764.6880. **Map 1, G5**

# Contessa's French Linens



Now selling machine washable  
linens made, designed and  
sewn in the South of France

- Authentic French tablecloth business
- One-of-a-kind, stain resistant linens
- Quimper Products
- Authentic French Jewelry
- Polish Pottery



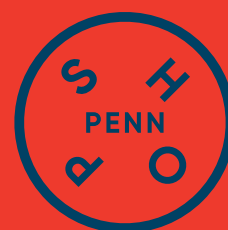
Reading Terminal Market  
12 & Arch Streets, 3rd Ave., Row B  
610.306.4507 • [contessasfrenchlinens.com](http://contessasfrenchlinens.com)

# Calling all Readers Leaders + Eaters

With more than 30 shops,  
40 restaurants, and  
15 sports and culture venues,  
a day at Penn could take  
you anywhere.

Shop smarter.  
Shop Penn.

#SHOPPENN  
@SHOPSATPENN



SHOPSATPENN.COM

**Gifts & Decor**

**THE ART SHOP AT MOORE COLLEGE OF ART & DESIGN**—Within this formidable arts-education institution is an excellent shop dealing in jewelry, scarves and accessories, as well as prints and greeting cards. The art and design pieces are created by Moore's emerging and established alumni as well as current students. M-Sa 10 am-6 pm. [www.moore.myshopify.com](http://www.moore.myshopify.com). 1916 Race St., 215.965.8586. **Map 1, G4**

**ART STAR**—Admire handmade clothes, jewelry and accessories, plus dolls, ceramics and prints at this gallery-style boutique in Northern Liberties. Tu-Sa 11 am-7 pm, Su noon-6 pm. [www.artstarphilly.com](http://www.artstarphilly.com). 623 N. Second St., 215.238.1557. **Map 1, K2**

**CONTESSA'S FRENCH LINENS**—Find lovely imported tablecloths and tea towels from Provence, Brittany and other French regions, plus one-of-a-kind aprons, jewelry and rosemary baskets at this shop in the historic Reading Terminal Market. M-Sa 9 am-5:30 pm, Su 9 am-5 pm. [www.contessasfrenchlinens.com](http://www.contessasfrenchlinens.com). 51 N. 12th St., 610.306.4507. **Map 1, I4**

**THE MUSEUM STORE AT THE PHILADELPHIA MUSEUM OF ART**—At the museum's gift shop, find items inspired by past and current exhibitions, including posters, prints, jewelry, music and DVDs, toys, housewares, clothing and accessories. Call for hours. [www.philamuseum.org](http://www.philamuseum.org). 2600 Benjamin Franklin Parkway, 215.684.7960. **Map 1, E2**

**OCCASIONETTE**—Established in 2013 by designer Sara Villari, this well-curated shop on South Philly's East Passyunk Avenue has become a fixture for one of the city's largest selections of independent cards, candles, tea towels, jewelry, barware, notebooks, journals, photo frames and more. M-F noon-8 pm, Sat 10 am-9 pm, Sun 10 am-6 pm. [www.occasionette.com](http://www.occasionette.com). 1825 East Passyunk Ave., 215.465.1704.

**OMOI ZAKKA SHOP**—Inspired by cozy Japanese-style gift shops, this off-Rittenhouse boutique stocks a carefully curated selection of "uncommon" accessories for home and office. M noon-7 pm, Tu-Sa 11 am-7 pm, Su noon-6 pm. [www.omoionline.com](http://www.omoionline.com). 1608 Pine St., 215.545.0963. **Map 1, H6**

**PAPER ON PINE**—This bright, airy shop features stationery brands from classic and chic (Crane & Co., Kate Spade) to eco-friendly and irreverent (Russell + Hazel, Knock Knock). M-Sa 11 am-7 pm, Su noon-5 pm. [www.paperonpine.com](http://www.paperonpine.com). 115 S. 13th St., 215.625.0100. **Map 1, I5**

**THE PAPERY**—This Old City stationery mecca carries an upscale collection of paper goods and distinctive gifts, whether the occasion calls for classy or kitschy. Browse the wide selection of greeting cards, Italian leather albums, wax initial stamps and organizers. M-F 11 am-7 pm, W 11 am-7:30 pm, Sa 10 am-6 pm. [www.paperyofphilly.com](http://www.paperyofphilly.com). 1219 Locust St., 215.922.1500. **Map 1, K4**

**PENNSYLVANIA GENERAL STORE**—Inside Reading Terminal Market, this vendor specializes in Philadelphia and Pennsylvania Dutch gift baskets, foods, souvenirs and more. M-Sa 8 am-6 pm, Su 9 am-5 pm. [www.pageneralstore.com](http://www.pageneralstore.com). Reading Terminal Market, 12th and Arch streets, 215.508.1881. **Map 1, I4**

**PHILADELPHIA INDEPENDENTS**—At this Old City gift shop, you won't find the usual Phillies tees and Liberty Bell snow globes. Philadelphia Independents stocks only handmade items by local makers, including jewelry, ceramics, accessories, home decor, artwork and baby gifts. M-Sa 11 am-7 pm, Su 11 am-5 pm. [www.philadelphiaindependents.com](http://www.philadelphiaindependents.com). 35 N. Third St., 267.773.7316. **Map 1, K4**

**RIKUMO**—This local retailer stocks household goods from decor to kitchen essentials, beauty and stationery. Products found here are sourced directly from artisans and craftsmen in Japan, who practice ancient techniques. By connecting these traditional creators with a modern international public, store founders Kaz and Yuka Morihata aim to sustain the character and artistry of Japanese craftsmanship. M-Sa 11 am-7 pm, Su 11 am-5 pm. [www.rikumo.com](http://www.rikumo.com). 1216 Walnut St., 215.609.4972. **Map 1, I5**

**TOWNHOME**—This sophisticated shop carries stylish gifts for him, her, baby and home. The carefully edited selection includes cool notecards, hip coffeetable books, candles, jewelry, home accents and adorable baby clothes and toys. M-Sa, 10 am-6 pm. [www.townhomeonline.com](http://www.townhomeonline.com). 1616 Walnut St., 215.972.5100. **Map 1, H5**





**URBAN PRINCESS BOUTIQUE**—This store is often recognized as a top spot for one-of-a-kind, affordable clothing and gifts. Inside, shop products by local artisans, like organic soaps and beauty products, jewelry, handbags and clothing. New inventory arrives almost daily. M-Th 11 am–6 pm, F-Sa 11 am–7 pm, Su noon–5 pm. [www.urbanprincessboutique.com](http://www.urbanprincessboutique.com). 620 S. 4th St., 267.909.8317. **Map 1, K7**

**VERDE**—A wide variety of colorful jewelry, accessories, perfume and whimsical gifts fill this shop. Head to the rear to watch chocolatiers make Marcie Blaine artisanal truffles, then select a few treats to take home. M-Sa 11 am–8 pm, Su noon–6 pm. [www.verdephiladelphia.com](http://www.verdephiladelphia.com) 108 S. 13th St., 215.546.8700. **Map 1, I5**

**WORKSHOP UNDERGROUND**—Taking queues from his previous gig at the Metropolitan Museum of Art, owner Ruben Luna sets up his shop like a museum. High-end artistic pieces seamlessly mix in with affordable knick-knacks. Come here for jewelry, apparel, home decor and gifts. W-Th noon–7 pm, F-Sa 11 am–8 pm, Su 11 am–5 pm. [www.workshopunderground.com](http://www.workshopunderground.com). 1544 South St., 215.987.3534. **Map 1, H6**

## Gourmet & Specialty Foods

**DI BRUNO BROTHERS**—The original Italian Market outpost of this Philly mecca for world-class cheese bustles day and night. At the Chestnut Street location, find a gourmet food emporium with takeout panini, gelato and additional specialty items. Hours vary by location. [www.dibruno.com](http://www.dibruno.com). The Market at Comcast Center, 1701 JFK Blvd., 215.531.5666. **Map 1, G4**; 1730 Chestnut St., 215.665.9220. **Map 1, G5**; Italian Market, 930 S. 9th St., 215.922.2876. **Map 1, J8**

**GREEN AISLE GROCERY**—A teeny tiny grocery store with an ambitious stock of products, including small-batch artisan goods from local and regional purveyors. Don't miss the hummus from Zahav, a local restaurant run by a James Beard Award-winning chef. M-F noon–8 pm, Sa 11 am–8 pm, Su noon–7 pm. [www.greenaislegrocery.com](http://www.greenaislegrocery.com). 1618 E. Passyunk Ave., 215.465.1411.

**LORE'S CHOCOLATES**—While in the historic district, indulge your sweet tooth with this candy shop's peanut butter balls, vanilla caramels and Liberty Bell-shaped chocolates, among other tasty selections. M-F 9 am–5:30 pm, Sa 10 am–4 pm. [www.loreschocolates.com](http://www.loreschocolates.com). 34 S. 7th St., 215.627.3233. **Map 1, J5**

**READING TERMINAL MARKET**—Founded in 1893, this market has evolved into one of the city's major food meccas, where visitors can sample international and local specialties, including cheesesteaks and Pennsylvania Dutch treats. M-Su 8 am–6 pm. [www.readingterminalmarket.org](http://www.readingterminalmarket.org). 12th and Arch sts., 215.922.2317. **Map 1, I4**

**ROCKET FIZZ**—Feed your nostalgia at this retro candy shop, offering everything from candy dots and whirly pops to bulk saltwater taffy, plus a variety of soda selections in flavors like bacon, s'mores and mud pie. M-Th 11 am–7 pm, F-Sa 11 am–9 pm, Su 11 am–6 pm. [www.rocketfizz.com](http://www.rocketfizz.com). 302 Arch St., 215.650.3163. **Map 1, K4**

**TEUSCHER CHOCOLATES OF SWITZERLAND**—A bright, beautiful store featuring gorgeous hand-made Swiss chocolates and exquisite champagne truffles. Fantasy packages, gift wrapping, shipping

**#teetime**

**GENO'S GEAR**  
RIGHT ACROSS THE STREET AT 9TH & PASSYUNK

**GENO'S STEAKS**

Where to Eat, Shop, Play and Stay Is Just a Touch Away

Put the power of Where® in the palm of your hand. Our **Where Traveler City Guide** app gives you instant access to thousands of hand-picked recommendations for things to do and places to go in destinations all over the world. Download it today for iPhone and Android.

GET IT ON Google play | Download on the App Store

and custom orders available. M-Sa 10 am–6 pm, Su noon–5 pm. [www.teuscherphiladelphia.com](http://www.teuscherphiladelphia.com). The Shops at The Bellevue, 200 S. Broad St., 215.546.7600. **Map 1, H5**

## Jewelry

**ANALOG WATCH CO.**—This independent watchmaker focuses on craftsmanship in designing minimalist timepieces, allowing natural materials to shine. Tu-Sa 9 am–5 pm. [www.analogwatchco.com](http://www.analogwatchco.com). 1737 E. Passyunk Ave., 484.808.5831.

**BARIO-NEAL**—Handcrafted in Philadelphia, this line of sophisticated jewelry is made exclusively with reclaimed precious metals, ethically sourced stones and low-impact, environmentally conscious practices. W-Th 1–7 pm, F-Su 11 am–6 pm. [www.bario-neal.com](http://www.bario-neal.com). 700 S. 6th St., 215.454.2164. **Map 1, K7**

**BELLA TURKA**—The local owners of this jewelry shop regularly travel around the world in search of chic baubles, like gold coin necklaces, cocktail rings and chunky stone cuffs, and also offer funky items from select domestic designers. 13th and Sansom St.: M-Sa 11 am–8 pm, Su noon–6 pm. [www.bellaturka.com](http://www.bellaturka.com). 113 S. 13th St. **Map 1, I5**; 1700 Sansom St., 215.560.8733. **Map 1, G5**

**LAGOS**—Philadelphia-based jeweler Lagos' one-and-only flagship has been a fixture, located just steps from Rittenhouse Square. This jewel-box shop features award-winning collections in sterling silver and 18-kt. gold. Steven Lagos has been designing beautiful pieces accented with gemstones, diamonds and pearls for 40 years. Friendly and knowledgeable staff makes the shopping experience a pleasure. M-Sa 10 am–7 pm, Su noon–6 pm. [www.lagos.com](http://www.lagos.com). 1735 Walnut St., 215.567.0770. **Map 1, G5**

**MARYANNE'S RITTER JEWELERS**—Open since 1909, this store's experts create custom designs for fine diamonds and gemstones, and offer quality jewelry at affordable prices. Look for a large selection of cultured freshwater and saltwater pearls. M-Tu and Th-F 10 am–5 pm, W 10 am–6 pm, Sa noon–5 pm. [www.maryannesritterjewelers.com](http://www.maryannesritterjewelers.com). 704 Sansom St., 215.701.6255. **Map 1, J5**

**TOURNEAU**—This international brand offers more than 100 watch brands, including Cartier, Fendi, Gucci and Movado, plus 8,000 unique styles for men and women. M-Sa 10 am–9 pm, Su 11 am–6 pm. [www.tourneau.com](http://www.tourneau.com). Plaza at King of Prussia Mall, 160 N. Gulph Road, King of Prussia, Pa., 610.491.8801. **Map 4, A3**

## Salons & Spas

**ADOLF BIECKER SPA SALON**—For a day of pampering, this spa offers exceptional customer service in their "whole-person" spa designed to ensure you not only look great, but feel great as well. Services include massage therapy, body scrubs, and facials, as well as a full service salon. Call for appointment. [www.adolfbiecker.com](http://www.adolfbiecker.com). 1605 Sansom St., 215.735.6404. **Map 1, H5**

**EVIANA LIFE SPA**—At this holistic day spa near Rittenhouse Square, you'll find award-winning organic facials, massages, wraps, waxing services and a beautiful boutique full of stylish, eco-friendly goods. Eviana is Pennsylvania's only Dr. Hauschka skin care treatment center. Open M 11 am–7 pm, Tu 10 am–7 pm, W-Th 10 am–8 pm, F 9 am–7 pm, Sa

9 am–6 pm, Su 11 am–6 pm. [www.eviana.com](http://www.eviana.com). 109 S. 13th St., Second floor, 215.545.3344. **Map 1, I4**

**JUJU SPA & ORGANICS**—A short stroll from South Street, this inviting spa specializes in all-natural skincare products, spa treatments and salon services. Su-M noon–7 pm, W-F 10 am–7 pm, Sa 10 am–6 pm. [www.jujusalon.com](http://www.jujusalon.com). 713 S. Fourth St., 215.238.6080. **Map 1, K7**

**MI CUMBIA ORGANICA**—This top-rated nail salon operated by a husband-and-wife team offers water- and soy-based products for mani-pedis, foot massages and Brazilian waxing. By appointment. Su-M 10 am–4 pm, W-Th noon–8 pm, Tu and F-Sa 10 am–6 pm. [www.micumbia.co](http://www.micumbia.co). 328 S. 17th St., 215.735.7980. **Map 1, G6**

**MOKO**—In the heart of Old City, Moko is a one-stop beauty shop specializing in natural treatments and products. Services include haircare and styling, scalp treatments, facials, waxing and makeup application. While you're there, stock up on natural soaps, skincare and makeup. Tu noon–6 pm, W-F 10 am–8 pm, Sa 10 am–6 pm. [www.mokobeauty.com](http://www.mokobeauty.com). 55 N. 3rd St., 215.922.MOKO. **Map 1, K4**

**RESCUE SPA**—This upscale European-style contemporary space specializes in massage therapy, detoxification and microdermabrasion. M-F 9 am–8 pm, Sa 9 am–7 pm. [www.rescuespa.net](http://www.rescuespa.net). 1601 Walnut St., 3rd floor, 215.772.2766. **Map 1, H5**

## Shoes

**BUS STOP BOUTIQUE**—British-born Elena Brennan has turned her Queen Village shop into a destination for fashionable shoes for both men and women. On historic Fabric Row, this hip footwear haven carries unique and comfy styles from hard-to-find designers. M-Th 11 am–6 pm, F 11 am–7 pm, Sa 11 am–6 pm, Su noon–5 pm. [www.busstopboutique.com](http://www.busstopboutique.com). 727 S. Fourth St., 215.627.2357. **Map 1, K7**

**HEAD START SHOES**—Located in Center City, this footwear shop stocks styles from upscale designers, including Fiorentini & Baker, Roberto Del Carlo and Vic Matie. M-Tu 10 am–6 pm, W-Sa 10 am–7 pm, Su 11 am–5 pm. [www.headstartshoes.com](http://www.headstartshoes.com). 126 S. 17th St., 215.567.3247. **Map 1, G5**

**TOBOX SHOES**—This chic local men's shop offers stylish and sophisticated looks from a wide selection of top-quality shoes, accessories and leather goods. Brands include hard-to-find labels like John Lobb, Carmina and Rancourt. M-Sa 10 am–6 pm. [www.toboxshoes.com](http://www.toboxshoes.com). 1822 Chestnut St., 215.644.9435. **Map 1, G5**

## Shopping Centers

**THE BELLEVUE PHILADELPHIA**—Inside this historic 1904 Beaux Arts building in Center City, find upscale boutiques such as Tiffany & Co., Nicole Miller, Polo Ralph Lauren and Williams-Sonoma. Dining options include world-class restaurants XIX and The Palm, plus a gourmet food court. Also here, the state-of-the-art The Sporting Club fitness facility and Hyatt at The Bellevue. Hours vary by store. [www.bellevuephiladelphia.com](http://www.bellevuephiladelphia.com). 200 S. Broad St., 215.875.8350. **Map 1, H5**

**KING OF PRUSSIA MALL**—The East Coast's largest retail shopping center has seven top department stores, including Bloomingdale's, Lord & Taylor and Nordstrom, plus 400 specialty shops like Tourneau and restaurants. The mall is easily accessible from Routes 202, I-76 and the Pa.

Turnpike. M-Sa 10 am–9 pm, Su 11 am–6 pm. [www.kingofprussiamall.com](http://www.kingofprussiamall.com). 160 N. Gulph Road, King of Prussia, Pa., 610.265.5727. **Map 4, A3**

**PHILADELPHIA PREMIUM OUTLETS**—It's worth the trip to this upscale shopping destination, where 150 designer and high-end outlet stores offer discounts from 25 to 65 percent every day. For more savings, register online for the center's VIP Shopper Club. M-Sa 10 am–9 pm, Su 10 am–7 pm. [www.premiumoutlets.com/philadelphia](http://www.premiumoutlets.com/philadelphia). 18 W. Lightcap Road, Limerick, Pa., 610.495.9000.

**THE SHOPS AT LIBERTY PLACE**—This indoor, Center City complex for fashion, jewelry, housewares and more has 55 specialty boutiques and international eateries. Retailers include Bloomingdale's The Outlet Store, ALDO Shoes and J. Crew. Take in Philadelphia from One Liberty Observation Deck. M-Sa 9:30 am–7 pm, Su noon–6 pm. [www.shopsatliberty.com](http://www.shopsatliberty.com). 1625 Chestnut St., between Liberty I and Liberty II office towers, 215.851.9055. **Map 1, H5**

**THE SHOPS AT UNIVERSITY SQUARE**—On the University of Pennsylvania campus in University City, find a mélange of national and independent retailers—American Apparel, Urban Outfitters, Eastern Mountain Sports, Douglas Cosmetics and Penn Bookstore—plus top-notch dining options. M-F 8:30 am–8:30 pm, Sa till 5:30 am, Su noon–5 pm. [www.universitysquare.biz/shop.html](http://www.universitysquare.biz/shop.html). 34th through 38th streets, Chestnut to Spruce sts. **Map 1, C5/D6**

## Specialty Shops

**PHILLY AIDS THRIFT**—This nonprofit founded in 2005 sells an eclectic collection of donated items with proceeds going to local organizations involved in the fight against HIV/AIDS. M-Th 11 am–8 pm, F-Sa 11 am–9 pm, Su 11 am–7 pm. [www.phillyaidsthift.com](http://www.phillyaidsthift.com). 710 S. 5th St., 215.922.3186. **Map 1, K7**

**PLEASURE CHEST**—Since 1974, this adult boutique off Rittenhouse Square has been offering intimate toys and products (lubricants, harnesses, "Rabbits," lingerie, sensual novelties) for men and women with the help of discreet, knowledgeable and friendly staff. Tu-Sa 11 am–7 pm. [www.pleasurechestphilly.com](http://www.pleasurechestphilly.com). 2039 Walnut St., 215.561.7480. **Map 1, G5**

## Sporting Goods & Apparel

**NOCTURNAL SKATEBOARDS**—One of the Philadelphia skate scene's go-to supply stops and hangouts opened in 2000 by X Games gold medalist Kerry Getz. Skaters find clothes, shoes, decks, trucks, wheels and every manner of skate accessory. M-Th noon–8 pm, F noon–9 pm, Sa 11 am–9 pm, Su noon–6 pm. [www.nocturnalskateshop.com](http://www.nocturnalskateshop.com). 533 South Street, 215.922.3177. **Map 1, J7**

**SHIBE VINTAGE SPORTS**—Founded by local sports enthusiasts, this store features retro-style shirts and hats appealing to the fashion-forward sports fan. The retailer's Originals line utilizes the talents of local artists and screen printers. Worldwide shipping available. M-Sa 11 am–8 pm, Su till 6 pm. [www.shibevintageports.com](http://www.shibevintageports.com). 137 S. 13th St., 215.566.2511. **Map 1, I5**



# Galleries+Antiques



## F.A.N. Gallery

Located in a 1700s building in Old City, this gallery hosts a different artist each month on the ground floor, with many coming from right here in Philadelphia. Group exhibitions are held on the second floor, with topics ranging from figurative to landscape and still-life. [www.thefangallery.com](http://www.thefangallery.com). 221 Arch St., 215.922.5155. Map 1, K4



## Gross McCleef Gallery

For more than 40 years this Rittenhouse Square shop has been advising collectors and placing art in museums throughout the region. In two main galleries, find monthly rotating exhibitions, special events, artist talks and an extensive inventory of works for sale. [www.grossmccleef.com](http://www.grossmccleef.com). 127 S. 16th St., 215.665.8138. Map 1, H5



## Architectural Antiques Exchange

This 30,000-sq.-ft. warehouse stocks architectural pieces dating from the late 1700s through the 1930s. Reclaimed treasures come from around the world, with furniture rounding out the collection. [www.architecturalantiques.com](http://www.architecturalantiques.com). 715 N. 2nd St., 215.922.3669. Map 1, K2

## Antiques Shops

**ANASTACIA'S ANTIQUES**—Anastacia's is brimming with affordably priced antiques and quirky collectibles of all kinds, from furnishings and lamps to dolls, books and jewelry. Staff occasionally takes shopping trips for merchandise during store hours so call in advance. Th-Sa noon-6:30 pm, Su noon-5 pm. [www.anastaciasantiques.com](http://www.anastaciasantiques.com). 617 Bainbridge St., 215.928.9111. Map 1, J7

**ANTIQUÉ SHOWCASE**—Find fine European furniture, lighting accessories and objets d'art at this charming antique shop located in the ritzy Rittenhouse neighborhood. M-Sa 10 am-6 pm. [www.antiquesthowspace.com](http://www.antiquesthowspace.com). 1625 Pine St., 215.545.0860. Map 1, H6

**FREEMAN'S**—One of the premier auction houses for fine arts and antiques is also the nation's oldest. M-Th 9 am-5 pm, F 9 am-3 pm, special office hours during auction exhibitions. [www.freemansauction.com](http://www.freemansauction.com). 1808 Chestnut St., 215.563.9275. Map 1, G5

**GARDEN GATE ANTIQUES**—Another stop in Chestnut Hill, this two-story shop features a wide range of items from West African art to Steiff animals, including but not limited to vintage and antique furnishings, clothing, jewelry and books. M-Sa 11 am-5 pm, Su noon-5 pm. [www.bowmanch.com/property/gardengate](http://www.bowmanch.com/property/gardengate). 8139 Germantown Ave., 215.248.5190. Map 3, C3

**KOHN & KOHN ANTIQUES**—Kohn & Kohn Antiques has been known for fine antiques in Philadelphia since 1932. Its inventory is broad with an emphasis on glass, furniture, porcelain and silver. Also check out the tobacciana collection, which includes cigarette cases, cigar cutters and elegant lighters. Open by appointment and by chance. [www.kohnandkohnantiques.com](http://www.kohnandkohnantiques.com). 1112 Pine St., 215.923.0432. Map 1, I6

**LAVENDER HILL HOME**—Lavender Hill in Chestnut Hill caters to those who love decorating the home. Visitors can browse unique antique pieces as well as newer items made to look and feel old, from candles and brass lamps to dried flowers, frames, jewelry and soaps. Lots of great gift items here. [www.lavenderhill-home.com](http://www.lavenderhill-home.com). Tu-Sa 11 am-5 pm, Su noon-4 pm. 8121 Germantown Ave., 215.248.5591. Map 3, C3

**M. FINKEL & DAUGHTER**—Opened in 1947 in an 1840s building on beautiful Antique Row, family-owned M. Finkel & Daughter continues to sell period antiques, 18th- and 19th-century furniture, and a highly acclaimed collection of needlework and silk embroideries spanning the 17th to mid-19th centuries. Call for an appointment. [www.samplings.com](http://www.samplings.com). 936 Pine St., 215.627.7797. Map 1, I6

**MODERNE GALLERY**—Twenty-thousand square feet across five floors offers ample space in this historic Old City building to showcase high-quality, vin-

tage 20th-century furniture, lighting and decorative accessories. Find French and American Art Deco and French 1940s-1950s pieces, work by George Nakashima and Wharton Esherick, and other studio crafts by Wendell Castle, David Ebner, Toshiko Takaezu, to name a few. Daily noon-5 pm. [www.modernegallery.com](http://www.modernegallery.com). 111 N. 3rd St., 215.923.8536. Map 1, K4

**MODE MODERNE**—This modern styled gallery features furniture and the artwork from a variety of artists from the 20th and 21st centuries. Select from vintage furniture, colorful knickknacks and decor pieces by well-known artisans. Th-Sa noon-6 pm. [www.modernemodern.com](http://www.modernemodern.com). 159 N. 3rd St., 215.627.0299. Map 1, K4

**NIEDERKORN ANTIQUE SILVER**—For more than 25 years, Niederkorn Antique Silver has been focusing on 19th- and 20th-century fine silver. Located just off Rittenhouse Square, this tiny store brims with sterling Christmas ornaments, jewelry, tea sets and napkin rings, Judaica, desk accessories and books on the art of silversmithing. Tu-Th 11:30 am-7 pm, F-Sa 11:30 am-5:30 pm. [www.niederkornsilver.com](http://www.niederkornsilver.com). 244 South 22nd St., 215.567.2606. Map 1, G6

**THE PHILADELPHIA PRINT SHOP**—Pore over the impressive collection of more than 20,000 historical prints and antique maps from the 16th through the early-20th centuries. Those looking for an affordable piece of fine art will have luck here—many prints are priced under \$100. M-Sa 10 am-5 pm.

There's a lot more going on this April. Visit us online: [wheretraveler.com](http://wheretraveler.com)



**TGIF!** On the first Friday of every month, art galleries and shops in Philly's Old City neighborhood stay open late, hosting new exhibits and special events.



[www.philaprintshop.com](http://www.philaprintshop.com). 8441 Germantown Ave., 215.242.4750. Map 3, B2

## Art Galleries

**3RD STREET GALLERY**—In the heart of Old City's gallery district, 3rd Street Gallery features a diverse mix of artists working in various media. In operation since 1978, this artist-run cooperative is devoted to presenting a quality experience of visual arts, all the while encouraging risk and experimentation in their artists' works. W-Su noon-5 pm. [www.3rdstreetgallery.com](http://www.3rdstreetgallery.com). 45 N. Second St., 215.625.0993. Map 1, K4

**THE BAZEMORE GALLERY**—Located in Manayunk, this gallery features an array of artists inside a space whose design is based on the five elements of Feng Shui. Find pop imagery, abstract landscapes, glass blown artwork and more, plus, rotating exhibits and The Living Wall, an indoor sustainable planting panel. W-Su noon-7 pm. [www.thebazemoregallery.com](http://www.thebazemoregallery.com). 4339 Main St., 215.482.1119.

**BLUESTONE FINE ART GALLERY**—This gallery features original works by contemporary and traditional artists in a range of mediums, including painting, ceramics and sculptures. See the work of well-known and emerging local artists. Each month new exhibitions kick off during Philadelphia's First Fridays, which draws hundreds of art lovers to the neighborhood. Tu-F 10 am-5 pm, Sa noon-4 pm. [www.bluestone-gallery.com](http://www.bluestone-gallery.com). 72 N. Second St., 856.979.7588. Map 1, K4

**CALDERWOOD GALLERY**—Owners Gary and Janet Calderwood showcase their personal art collection of 20th-century design and fine photography across 30,000 square feet of space. Find museum-quality French Art Deco by Ruhlmann, Arbus, Dufréne and others, Mid-century Modern decorative arts and more. Gary Calderwood's photography presents a visual history of the 20th century. Ships internationally. M-F 11 am-5 pm, Sa-Su by appointment. [www.calderwoodgallery.com](http://www.calderwoodgallery.com). 242 Geiger Road, 215.546.5357.

**CARRÉ D'ARTISTES**—This art gallery is a leader in affordable, contemporary art, selling world-class, original paintings and specializing in a wide variety of artistic styles, from figurative and abstract to landscape, Pop and street art, all created by a vast collection of internationally known artists. Framing services available. Daily 11 am-8 pm, extended hours on First Fridays. [www.careedartistesphilly.com](http://www.careedartistesphilly.com). 104 S. 13th St., 215.735.2800. Map 1, I5

**THE CENTER FOR ART IN WOOD**—This not-for-profit museum, gallery and research center focuses on woodworks, showcasing all methods of wood art-making including turned and carved sculptures by renowned artists and craftsmen. Tu-Sa 10 am-5 pm. [www.centerforartinwood.org](http://www.centerforartinwood.org). 141 N. Third St., 215.923.8000. Map 1, K4

**CERULEAN ARTS GALLERY & STUDIO**—Just off of North Broad Street, the gallery exhibits eclectic decorative and fine art while the studio offers art instruction and weekend workshops. In addition to the displayed works of more than 100 artists, the gallery also proffers handmade wares from an additional 100 artisans. W-F 10 am-6 pm, Sa-Su noon-6 pm. [www.ceruleanarts.com](http://www.ceruleanarts.com). 1355 Ridge Ave., 267.514.8647. Map 1, H2

**THE CLAY STUDIO**—This gallery and educational facility promotes the craft of ceramic arts through artist residencies, studio space, gift shop, educational and outreach programs and its permanent collection. The Clay Studio is dedicated to providing programs for all artists, emerging and expert. M-Sa 11 am-6 pm, Su noon-6 pm. [www.theclaystudio.org](http://www.theclaystudio.org). 139 N. Second St., 215.925.3453.

**FLEISHER ART MEMORIAL**—In addition to offering a rotating display of wide-ranging works by local artists, this gallery also hosts an extensive catalog of inexpensive workshops and free classes for all skill levels. M-F 10 am-5 pm. [www.fleisher.org](http://www.fleisher.org). 719 Catharine St., 215.922.3456. Map 1, J7

**FLEISHER/OLLMAN GALLERY**—Founded in 1952, Fleisher/Ollman Gallery earned its reputation as a premier source of self-taught artists, and today it exhibits contemporary artists who reflect the influence of the self-taught, including Martin Ramirez, Bill Traylor and Tristin Lowe. Tu-F 10:30 am-5:30 pm, Sa noon-5 pm. [www.fleisher-ollmangallery.com](http://www.fleisher-ollmangallery.com). 1216 Arch St., Suite 5A, 215.545.7562. Map 1, H6

**GRAVERS LANE GALLERY**—Located in Chestnut Hill, this edgy, contemporary art gallery exhibits works by both established and emerging artists from around the world. Its media spectrum is broad, including painting, sculpture, fiber and paper. M-Sa 10 am-6 pm, Su noon-5 pm. [www.graverslane-gallery.com](http://www.graverslane-gallery.com). 8405 Germantown Ave., 215.247.1603. Map 3, B2

**INLIQUID ART & DESIGN**—This educational resource and exhibition gallery has a mission to serve Philadelphia's visual artists by featuring their creatives on its free public website. There, find portfolios and credentials for more than 280 artists, as well as "real world" exhibitions. Visit the website for full exhibit calendar and locations. [www.inliquid.org](http://www.inliquid.org). 1400 N. American St., 215.235.3405.

**JAMES OLIVER GALLERY**—This unique, contemporary loft-style gallery, nestled in the heart of the Historic District, features local, national and international artists in the disciplines of painting, mixed media, photography and installation works that have been recognized by notables such as NPR and Huffington Post. W-F 5 pm-8 pm, Sa 1 pm-8 pm or by appointment. [www.jamesolivergallery.com](http://www.jamesolivergallery.com). 723 Chestnut St., 4th floor, 267.918.7432. Map 1, J5

**KAMIN GALLERY**—Housing books and objects commemorating the lives of noted Philadelphians including Benjamin Franklin, Marian Anderson and Tom Phillips, this repository also offers a fascinating gallery on the University of Pennsylvania campus, inside the Van Pelt-Dietrich Library. M-F 9 am-5 pm, Sa-Su by appointment. [www.library.upenn.edu](http://www.library.upenn.edu). 3420 Walnut St., 1st floor, 215.898.7555. Map 1, D5

**MUSE GALLERY**—This artist-run Old City gallery encompasses a range of styles including abstract, conceptual and representational. Each month, the gallery highlights a different artist's work in varying disciplines, creating a new experience for each visit. W-Su noon-5 pm. [www.musegalleryphiladelphia.com](http://www.musegalleryphiladelphia.com). 52 N. Second St., 215.627.5310. Map 1, K4

**MOUNT AIRY CONTEMPORARY**—Husband-and-wife artists Colin Keefe and Andrea Wohl Keefe run this charming exhibition space in the carriage house behind their residence. Here, find not only their own works, but also those of other artists in the region. Call for hours. [www.mountainaircontemporary.com](http://www.mountainaircontemporary.com). 25 W. Mt. Airy Ave., 267.270.2787.

Bluestone Fine Art Gallery

72 North 2nd Street • Philadelphia  
856-979-7588 • [bluestone-gallery.com](http://bluestone-gallery.com)

Complimentary Shipping within the United States

• SPRATLING • TIFFANY • GEORG JENSEN • GORHAM • SILVER • SPRATLING • TIFFANY • GEORG JENSEN • GORHAM • UNGER BROS. MODERNE • JEWELRY • PICTURE FRAMES

TONY LA SALLE  
Red Is My Color  
60 x 40, Oil

NIEDERKORN  
ANTIQUE SILVER

244 SOUTH 22ND ST  
PHILADELPHIA, PA 19103  
215.567.2606  
NEIDERKORNSILVER.COM

MODERNE • JEWELRY • PICTURE FRAMES • DINING

(FROM LEFT) COURTESY F.A.N. GALLERY; CHRISTINE LAFUENTE, WHITE DAFFODILS, JAR, AND SPOON, COURTESY GROSS MCCLEAF; VICE MEDIA BROOKLYN BAR, COURTESY ARCHITECTURAL ANTIQUES EXCHANGE



# Museums+Attractions



## The Franklin Institute

This city's celebrated, family-friendly museum explores all things science through hands-on exhibits, such as the walk-through "Giant Heart." This month, "Game Masters" explores the history of video games, from Pong to immersive virtual reality experiences. [www.fi.edu](http://www.fi.edu). 222 N. 20th St., 215.448.1200. Map 1, G4



## Battleship New Jersey

After seeing combat throughout the 20th century, the nation's most decorated battleship now finds a home on the Camden waterfront, where it serves as a floating museum and education center. [www.battleshipnewjersey.org](http://www.battleshipnewjersey.org). 100 Clinton St.; Camden, N.J.; 866.877.6262. Map 1, K4



## The Philadelphia Museum of Art

At this sprawling trove, see major works of fine and decorative art from around the globe. This month, "Modern Times" highlights artists of the early 20th century, one of the most transformative periods in history. [www.philamuseum.org](http://www.philamuseum.org). 2600 Benjamin Franklin Parkway, 215.763.8100. Map 1, E2

## Admission/Discount Passes

**CITYPASS**—This nine-day pass (valid beginning with first day of use) offers savings of up to 44 percent off admission to attractions, including The Franklin Institute, One Liberty Observation Deck, Philly Trolley Works and The Big Bus Company, plus the Philadelphia Zoo or Adventure Aquarium. \$55; children (ages 2-12) \$35. [www.citypass.com](http://www.citypass.com). 888.330.5008.

## Art Museums

**THE BARNES FOUNDATION**—Established by Albert C. Barnes in 1922 to "promote the advancement of education and the appreciation of the fine arts and horticulture," the Barnes holds a superb collection of Impressionist, post-Impressionist and early-Modern paintings, as well as extensive collections ranging from African sculpture to antiquities from Europe and Asia. \$10-\$25. W-M 10 am-5 pm. [www.barnesfoundation.org](http://www.barnesfoundation.org). 2025 Benjamin Franklin Parkway, 215.278.7200. Map 1, G3

**FABRIC WORKSHOP AND MUSEUM**—This nonprofit pushes the frontiers of contemporary art by supporting artists who work with experimental materials. Design enthusiasts find plenty to see here, from an extensive permanent collection to special exhibitions, plus lectures and tours. Don't miss the design-driven gift shop. Free. M-F 10 am-6 pm, Sa-Su noon-5 pm. [www.fabricworkshopandmuseum.org](http://www.fabricworkshopandmuseum.org). 1214 Arch St., 215.561.8888. Map 1, I4

## INSTITUTE OF CONTEMPORARY ART—

On the University of Pennsylvania campus, this modern site features cutting-edge exhibits of contemporary and provocative visual art, plus artist talks, lectures, films and tours. "Tag: Proposals on Queer Play and the Ways Forward," through Aug. 12. Free. W 11 am-8 pm, Th-F 10 am-6 pm, Sa-Su 11 am-5 pm. [www.icaphila.org](http://www.icaphila.org). 118 S. 36th St., 215.898.7108. Map 1, C5

**JAMES A. MICHENER ART MUSEUM**—This independent nonprofit museum features the art and culture of Bucks County, Pa., and is home to the largest publicly held collection of Pennsylvania Impressionist paintings. "Virtually Rudy: New Dimensions in Sculpture," through April 8; "Magical & Real: Henriette Wyeth and Peter Hurd, A Retrospective," through May 6. \$8-\$18. Tu-F 10 am-4:30 pm, Sa 10 am-5 pm, Su noon-5 pm. [www.michenermuseum.org](http://www.michenermuseum.org). 138 S. Pine St., Doylestown, Pa., 215.340.9800. Map 4, B1

**MERCER MUSEUM**—This towering castle houses dramatic displays of the implements, folk art and furnishings of early America before mechanization. Upcoming: Tickets: \$8-14. Mercer Experience Ticket grants admission to Mercer Museum and Fonthill Castle: \$15-24. Open M-Sa 10 am-5 pm, Su noon-5 pm. [www.mercermuseum.org](http://www.mercermuseum.org). Pine Street and Scout Way, Doylestown, Pa., 215.345.0210.

## PENNSYLVANIA ACADEMY OF THE FINE ARTS—

This National Historic Landmark houses America's first art museum and art school, and one of the world's largest collections of American art, including works by Charles Willson Peale, Thomas Eakins, Mary Cassatt and Maxfield Parrish. "Chuck Close Photographs," through April 8; "Nick Cave: Rescue," through May 13. \$8-\$15. Tu and Th-F 10 am-5 pm, W 10 am-9 pm, Sa-Su 11 am-5 pm. [www.pafa.org](http://www.pafa.org). 118-128 N. Broad St., 215.972.7600. Map 1, H4

## PHILADELPHIA MUSEUM OF ART'S PERELMAN BUILDING—

Across the street from Philadelphia Museum of Art's main building, this annex highlights collections of costumes, textiles, photos and contemporary design. \$14-\$20 (good for two consecutive days to the main building, Perelman Building, the Rodin Museum, and Historic Houses Mt. Pleasant and Cedar Grove). Free shuttle between main building, Perelman Building and Rodin Museum. Tu-Su 10 am-5 pm. [www.philamuseum.org](http://www.philamuseum.org). 2525 Pennsylvania Ave., 215.763.8100. Map 1, E2

**RODIN MUSEUM**—The largest collection of the sculptor's work outside Paris includes casts of his most famous works, including "The Thinker" and "The Gates of Hell." The renovated grounds include lush gardens and a neoclassical Beaux Arts building. Free tours W-M at noon. \$7-\$10; \$20, good for two consecutive days to the main building, Perelman Building, the Rodin Museum and historic houses Mt. Pleasant and Cedar Grove.

There's a lot more going on this April. Visit us online: [wheretraveler.com](http://wheretraveler.com)

**PAINT THE TOWN** Philly has the most Impressionist paintings outside of Paris and counts thousands of murals, making it the Mural Capital of the U.S.



W-M 10 am-5 pm. [www.rodinmuseum.org](http://www.rodinmuseum.org). 2151 Benjamin Franklin Parkway, 215.763.8100. Map 1, F3

**WOODMERE ART MUSEUM**—Celebrate Philadelphia's artistic legacy inside a 19th-century stone Victorian mansion in the city's northwestern neighborhood of Chestnut Hill. "Jerry Pinkney: Martin Luther King, Jr. and Great American Heroes," through April 8; "Charles Santore: Fifty Years of Art and Storytelling," through May 13; "Elizabeth Osborne: Animal Paintings and Watercolors," through June 24. \$7-\$10. Su and Tu-Th 10 am-5 pm, F 10 am-8:45 pm, Sa 10 am-6 pm. [www.woodmereartmuseum.org](http://www.woodmereartmuseum.org). 9201 Germantown Ave., 215.247.0476. Map 4, B1

## Attractions

**ADVENTURE AQUARIUM**—Get up close and personal to sea creatures and wildlife in nearly 200,000 square feet of space at this aquarium, located just across the Delaware River on the Camden waterfront. See hippos in the West African River Experience, watch penguins swim on Penguin Island, and marvel at sharks in a 40-foot walkthrough tunnel. Neighbors Camden Children's Garden. \$21-\$28, under 2 free. Daily 10 am-5 pm. [www.adventureaquarium.com](http://www.adventureaquarium.com). 1 Riverside Drive, Camden, NJ, 856.365.3300. Map 1, K4

**CITY HALL AND TOWER**—Philadelphia's center of city government is the world's tallest masonry structure and the country's largest municipal building. Tours offered daily. **Interior & tower:** \$15.25, senior/military \$10.25, student/youth \$8.25, children (ages 3 and under) free. M-F 12:30 pm. **Tower only:** \$8.25, seniors/military \$6.25, students/youth \$4.25, children (ages 3 and under) free. M-F 9:30 am-4:15 pm, and some Sa. 11 am-4 pm. [www.phlvisitorcenter.com/cityhall](http://www.phlvisitorcenter.com/cityhall). Broad and Market sts., 267.514.4757. Map 1, H5

**DREAM GARDEN MOSAIC**—Visitors seek out this beautiful, 15-by-49-foot mosaic inside the Curtis Center, the elegant building that once housed the offices of the Ladies Home Journal and the Saturday Evening Post. Completed in 1916, the mosaic was created by Louis Comfort Tiffany in conjunction with Philadelphia artist Maxfield Parrish (and based on Parrish's painting "The Dream Garden"). Free. M-F 8 am-6 pm, Sa 10 am-1 pm. [www.visitphilly.com/music-art/philadelphia/dream-garden/](http://www.visitphilly.com/music-art/philadelphia/dream-garden/). 601-645 Walnut St., 215.238.6450. Map 1, J5

**EAKINS OVAL**—Visible from anywhere on the Benjamin Franklin Parkway, Eakins Oval is especially breathtaking from the steps of the Philadelphia Museum of Art. The focal point is the Washington Monument fountain, with a bronze-and-granite statue of George Washington on his horse capping a fountain decorated with animals and plants native to the country. [www.theovalph.org](http://www.theovalph.org). 24th St. and Benjamin Franklin Parkway, 215.422.4169. Map 1, F3

**EASTERN STATE PENITENTIARY HISTORIC SITE**—Once the most famous and expensive prison in the world, Eastern State Penitentiary is now a haunting, crumbling, abandoned building remembered for its notorious captives. Tours include cell blocks, solitary punishment chambers, Al Capone's lavishly decorated jail, death row and newly opened hospital wing. \$10-\$14. Daily 10 am-5 pm. [www.easternstate.org](http://www.easternstate.org). 2027 Fairmount Ave., 215.236.3300. Map 1, F2

**ELFRETH'S ALLEY**—The oldest continuously occupied residential street in the U.S. features 18th- and 19th-century private homes. Visitors stroll the

SEPTA AIRPORT LINE

# TRAIN - THEN - PLANE

ONE WAY \$6.75\*

25 MINUTES FROM  
CENTER CITY PHILADELPHIA TO  
PHILADELPHIA INTERNATIONAL AIRPORT

RUNS EVERY 30 MINUTES  
FROM 5AM - MIDNIGHT

**ISEPTAPHILLY.COM**

\*WHEN FARE IS PURCHASED IN ADVANCE

(FROM LEFT) COURTESY THE FRANKLIN INSTITUTE; ©PHIL S. SMITH, USN/WIKIMEDIA COMMONS; PERTINING TO YACHTS AND YACHTING, CHARLES SHEELER; COURTESY MARK ASHKANASY 2012



cobblestoned way named for Jeremiah Elfreth, taking in such quaint details as brass doorknobs, small-paned windows with flower boxes and brickwork. Find the Elfreth's Alley Museum in No. 126 and a gift shop and information center in No. 124. The museum offers guided tours F-Su noon-5 pm, in season (\$5). [www.elfrethsalley.org](http://www.elfrethsalley.org). Located off Second St., between Race and Arch sts., 215.627.8680. **Map 1, K4**

**INDEPENDENCE HALL**—Built for the Pennsylvania legislature, Independence Hall became famous as the "Birthplace of the United States" after the Declaration of Independence was adopted and the U.S. Constitution was drafted here. Free, timed tickets available at the Independence Visitor Center (Sixth and Market streets). Daily 9 am-5 pm. [www.nps.gov/inde/playourvisit/independencehall.htm](http://www.nps.gov/inde/playourvisit/independencehall.htm). Chestnut St., between Fifth and Sixth sts., 215.965.2305. **Map 1, J5**

**INDEPENDENCE NATIONAL HISTORICAL PARK**—This park spans 20 city blocks (more than 55 acres) and includes Colonial sites like Independence Hall, Christ Church, Carpenters' Hall, Old City Hall and the Benjamin Franklin Museum, not to mention the Liberty Bell. The Independence Visitor Center at Sixth and Market streets distributes free tickets for Independence Hall, as well as maps and brochures in several languages. [www.nps.gov/inde](http://www.nps.gov/inde). 215.965.2305. **Map 1, K5**

**LIBERTY BELL CENTER**—The 2,080-pound bell with its famous crack rang on July 8, 1776 to announce the first public reading of the Declaration of Independence. These days, the world's most famous bell is preserved here across from Independence Hall. Free. Daily 9 am-5 pm. [www.nps.gov/inde](http://www.nps.gov/inde). Sixth and Market sts., 215.965.2305. **Map 1, J5**

**OLD CITY HALL**—Check out the building that was constructed to be Philadelphia's second City Hall; from the time it was completed it served as the home of the U.S. Supreme Court from 1791 to 1800, when it—and the nation's capital—moved to Washington. John Jay was Chief Justice here. Today's visitors can explore a restored courtroom. The Liberty Bell stands right outside. Free. Daily 9 am-5 pm. [www.nps.gov/inde/playourvisit/old-city-hall.htm](http://www.nps.gov/inde/playourvisit/old-city-hall.htm). Fifth and Chestnut sts., 215.965.2305. **Map 1, K5**

**PHILADELPHIA ZOO**—America's first zoo is a Victorian-landscaped, 42-acre area housing more than 1,300 animals in naturalistic habitats. Attractions include the Zooballoon (offering rides up to 400 feet with citywide views for an extra fee), a children's zoo, a butterfly habitat and more. \$16-\$23. Daily 9:30 am-4 pm. [www.philadelphiaparkzoo.org](http://www.philadelphiaparkzoo.org). 3400 W. Girard Ave., 215.243.1100. **Map 1, C2**

**PHILADELPHIA'S MAGIC GARDENS**—Created by mosaic artist Isaiah Zagar, this mesmerizing, maze-like "garden" is actually an outdoor installation complemented by indoor gallery space that was built from glass and ceramic fragments, discarded wheels, bottles and other ephemera. \$5-\$10. W-M 11 am-6 pm. [www.phillymagicgardens.org](http://www.phillymagicgardens.org). 1020 South St., 215.733.0390. **Map 1, I7**

## Historic Homes

**BETSY ROSS HOUSE**—The Colonial-style historic home of America's famous flag maker features period furnishings and Betsy Ross' own personal belongings, plus an upholstery shop and special exhibitions. \$4-\$7. Daily 10 am-5 pm.

[www.historicphiladelphia.org](http://www.historicphiladelphia.org). 239 Arch St., 215.629.4026. **Map 2, D3**

**DECLARATION HOUSE (GRAFF HOUSE)**—This reconstruction of the house where Thomas Jefferson wrote the Declaration of Independence features exhibits and a short film on the drafting of the historic document. Free. Call for hours. [www.nps.gov/inde](http://www.nps.gov/inde). 701 Market St., 215.965.7676. **Map 2, A5**

**FAIRMOUNT PARK HOUSES**—These 18th- and 19th-century mansions with period furnishings are considered some of the finest examples of early American homes. Tours are offered by the Park House Guides. \$5-\$8, children (ages 6-12) free. [www.parkcharms.com](http://www.parkcharms.com). Lemon Hill, Sedgley and Lemon Hill drives, 215.232.4337; Mount Pleasant, Mount Pleasant Drive, 215.763.8100; Laurel Hill, Randolph and East Edgely drives, 215.235.1776; Woodford, 33rd and West Dauphin sts., 215.229.6115; Strawberry Mansion, Strawberry Mansion Drive, 215.228.8364; Cedar Grove, Lansdowne and Cedar Grove drives, 215.763.8100; Sweetbriar, Sweetbriar Drive, 215.222.1333.

## Historic Religious Sites

**CATHEDRAL BASILICA OF SAINTS PETER**

**AND PAUL**—Opened in 1864 and designed by architect Napoleon LeBrun, this majestic domed cathedral is modeled after the Lombard Church of St. Charles (San Carlo al Corso) in Rome. Visitors can admire the Roman-Corinthian architecture, the impressive copper dome and the breathtaking interior. Cathedral Basilica ambassadors are available during open hours to assist visitors and give tours. M-F 7:30 am-5 pm, Sa 9 am-6:30 pm, Su 8 am-7:30 pm. [www.cathedralphil.org](http://www.cathedralphil.org). 18th St. and Benjamin Franklin Parkway, 215.561.1313. **Map 1, G4**

**CHRIST CHURCH**—Many founding fathers prayed at this Episcopal church, founded in 1695. Services: Su 9 am and 11 am. M-Sa 9 am-5 pm, Su 1 pm-5 pm. Free, but \$5 donation suggested. [www.christchurchphil.org](http://www.christchurchphil.org). Second St., between Market and Arch sts., 215.922.1695. **Map 1, K5**

**CHRIST CHURCH BURIAL GROUND**—Benjamin Franklin rests at this Colonial-era cemetery—his grave is visible through the gate at Fifth and Arch sts. Other notables include four signers of the Declaration of Independence. \$2, children (ages 5-16) \$1. Guided tours depart 11 am-3:30 pm daily (weather permitting); \$7, youth (ages 5-16) \$3, groups \$30. M-Sa 10 am-4 pm, Su noon-4 pm. [www.christchurchphil.org](http://www.christchurchphil.org). Fifth and Arch sts., 215.922.1695. **Map 1, K4**

**CONGREGATION MIKVEH ISRAEL**—Founded in 1740, this synagogue houses the oldest Jewish congregation in Philadelphia and the second-oldest congregation in the United States. Archives and tours by appointment. Call for hours. [www.mikvehisrael.org](http://www.mikvehisrael.org). 44 N. Fourth St., 215.922.5446. **Map 2, C4**

## Library/Cultural Center

**FREE LIBRARY OF PHILADELPHIA:**

**CENTRAL LIBRARY**—Holdings here run the gamut from 4,000-year-old clay tablets to a collection of orchestral music that numbers more than 13,000 compositions and, of course, lots of books. Author events are frequent, as notable writers often make this a stop on national book tours. M-Th 9 am-9 pm, F till 6 pm, Sa till 5 pm, Su 1-5 pm. [www.freelibrary.org](http://www.freelibrary.org). 1901 Vine St., 215.686.5322. **Map 1, G3**

## Special Interest Museums

**THE AFRICAN AMERICAN MUSEUM IN**

**PHILADELPHIA**—This museum is the first built by a major United States city to house and interpret the life and work of African-Americans. \$10-\$14. Th-Sa 10 am-5 pm, Su noon-5 pm. [www.aampmuseum.org](http://www.aampmuseum.org). 701 Arch St., 215.574.0380. **Map 1, J4**

**AMERICAN TREASURE TOUR**—Guides take visitors on a tram ride through the museum to explore an extensive collection of Americana, from antiques to pop culture items. General admission Th-Sa 10 am-3 pm. \$12.50, children (ages 3-12) \$5, under 3 free. By reservation only: Custom tours (4+ people) M-F; Group tours (15+) M-Sa. Check website for details. [www.americanstreasuretour.com](http://www.americanstreasuretour.com). 122 Mill Road, Oaks, Pa., 866.970.8687. **Map 4, A2**

**BENJAMIN FRANKLIN MUSEUM**—Part of Independence National Historical Park, the Benjamin Franklin Museum explores the life and legacy of this notable figure from American history. Visitors see artifacts, computer animations and interactive displays. \$5, youth (ages 4-16) \$2. Daily 9 am-5 pm. [www.nps.gov/inde](http://www.nps.gov/inde). Market Street between Third and Fourth sts., 215.965.2305. **Map 1, K5**

**NATIONAL CONSTITUTION CENTER**—Located just two blocks from Independence Hall and the Liberty Bell, this dynamic and modern museum tells the story of the U.S. Constitution through interactive and multimedia exhibits. \$11-\$14.50. M-F 9:30 am-5 pm, Sa 9:30 am-6 pm, Su noon-5 pm. [www.constitutioncenter.org](http://www.constitutioncenter.org). 525 Arch St., Independence Mall, 215.409.6600. **Map 1, K4**

**NATIONAL LIBERTY MUSEUM**—Celebrate America's heritage of freedom and achievement at galleries honoring local, national and international defenders of liberty. Exhibits include "Welcome to Liberty Gallery," "Voyage to Liberty" and "Heroes From Around the World." Don't miss the work of glass artist Dale Chihuly. \$2-\$7; \$15 family pass. Check website for seasonal hours. [www.libertymuseum.org](http://www.libertymuseum.org). 321 Chestnut St., 215.925.2800. **Map 1, K5**

**NATIONAL MUSEUM OF AMERICAN JEWISH HISTORY**—At this Smithsonian affiliate, visitors explore the history of Jews in America through exhibits featuring more than 1,000 artifacts, plus films and interactive displays that allow visitors to contribute their own stories. "Leonard Bernstein: The Power of Music," ongoing. \$13-\$15, children under 13 free. W-F 10 am-5 pm, Sa-Su till 5:30 pm. [www.nmajh.org](http://www.nmajh.org). Corner of 5th and Market sts., 215.923.3811. **Map 1, K5**

**PENN MUSEUM**—Founded in 1887, this institution exhibits an internationally acclaimed collection of archeological and anthropological artifacts from all over the world. "Bearing Witness: Four Days in West Kingston," through July 15. \$10-\$15. Tu-Su 10 am-5 pm, first Wednesdays 10 am-8 pm. [www.penn.museum](http://www.penn.museum). 3260 South St., 215.898.4000. **Map 1, D6**

**THE PHILADELPHIA HISTORY MUSEUM AT THE**

**ATWATER KENT**—This city's official history museum features eight renovated galleries on two floors, exhibiting items from the site's vast holdings of more than 100,000 objects, including such gems as the wampum belt given to William Penn by the Lenape people, Joe Frazier's Everlast boxing gloves, and the world's largest walkable map of Philadelphia. "Community History Gallery: Folk Arts for Social Change," through April 30. \$6-\$10.

Tu-Sa 10:30 am-4:30 pm. [www.philadelphiahistory.org](http://www.philadelphiahistory.org). 15 S. Seventh St., 215.685.4830. **Map 1, J5**

**PLEASE TOUCH MUSEUM**—Located in the gorgeously renovated Memorial Hall in Fairmount Park, this children's museum is dedicated to enriching the lives of youngsters by providing learning opportunities through play. Hands-on experiences include "Wonderland" (hedge maze and Hall of Mirrors), "Flight Fantasy" (build and launch rockets), "River Adventures" (mini Schuylkill River). "Jim Henson's Sid the Science Kid: The Super-Duper Exhibit," through May 6. \$19. M-Sa 9 am-5 pm, Su

11 am-5 pm. [www.pleasetouchmuseum.org](http://www.pleasetouchmuseum.org). 4231 Avenue of the Republic, 215.581.3181. **Map 1, B4**

## Observatories & Lookouts

**ONE LIBERTY OBSERVATION DECK**—This site offers 360-degree vistas of the city and beyond. On clear days, views extend to New Jersey and Delaware to the east, past University City to the west, down to Philly's stadiums to the south, and up to the neighboring suburbs to the north. High-tech touch-screens let visitors zoom in. Guided tours (free with admission) M-F at 11 am and 3 pm, Sa-Su at 11 am, 1 pm and 3 pm, plus self-guided tours. \$9-

\$19. Daily 10 am-8 pm. [www.phillyfromthetop.com](http://www.phillyfromthetop.com). 1650 Market St., 215.561.3325. **Map 1, H5**

## Parks & Nature

**AWBURY ARBORETUM**—Nature lovers will appreciate Awbury Arboretum, where a 19th-century estate is surrounded by meadows, gardens, wildlife and an ecologically restored stream. Call or check the website for programming and tour info. Located in historic Germantown; take SEPTA's Chestnut Hill East Regional Rail line to the Washington Lane Station. Grounds open free of charge daily, dawn until dusk; Francis Cope House open M-F, 9 am-5 pm. [www.awbury.org](http://www.awbury.org). One Awbury Rd.; enter off Chew Ave. between Washington Lane and Haines St., 215.849.2855.

**PENNSYLVANIA HORTICULTURAL SOCIETY**—The organizers of the annual Philadelphia International Flower Show host educational exhibitions and lectures in their Center City headquarters. Visit website or call weekdays from 9 am-5 pm to find out about exclusive events like tree and garden care classes, green roof tours and garden festivals. [www.phsonline.org/events](http://www.phsonline.org/events). 100 N. 20th St., 215.988.8800. **Map 1, G4**

**LONGWOOD GARDENS**—This horticultural paradise has 1,050 acres of gardens, woodlands, meadows and 20 indoor gardens, plus an extraordinary "Nature's Castles" tree house exhibit. Frequent live musical performances. Check website for schedule. "Spring Blooms," through May 6. \$12-\$23. Daily 9 am-6 pm. [www.longwoodgardens.org](http://www.longwoodgardens.org). 1001 Longwood Road, Kennett Square, Pa., 610.388.1000. **Map 4, A4**

**THE FAIRMOUNT PARK HORTICULTURE CENTER**

**& CENTENNIAL ARBORETUM**—Built in 1979 on the site of the former Horticultural Hall, an 1876 Exposition building, this center holds indoor and outdoor splendors including greenhouses, ponds, Japanese maples, evergreens, sculptures of poets and musicians and plants of all types. Free; donations accepted. Greenhouses: Daily 9 am-3 pm. Arboretum: Daily 9 am-5 pm. [www.fairmount-parkconservancy.org](http://www.fairmount-parkconservancy.org). 100 N. Horticultural Drive, 215.685.0096. **Map 1, B3**

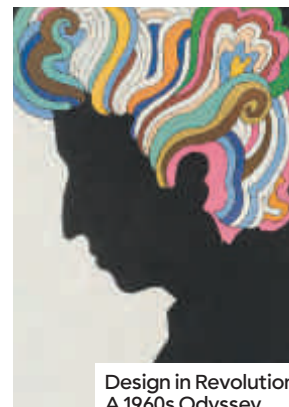
**MORRIS ARBORETUM OF THE UNIVERSITY OF**

**PENNSYLVANIA**—The 92-acre Morris Arboretum is an ever-changing horticultural wonderland, with its display gardens featuring a spectacular collection of rare and mature trees in a Victorian landscape. \$9-\$17. Daily 10 am-4 pm. [www.morrisarboretum.org](http://www.morrisarboretum.org). 100 E. Northwestern Ave., 215.247.5777.

**SISTER CITIES PARK VISITOR CENTER**—Sister Cities Park is a tranquil destination for those wishing to embrace Philadelphia's vibrant cultural scene. The park's visitor center is your gateway to the mile-long stretch of first-class museums and attractions that give life to the parkway. Expert representatives provide custom itineraries, maps and brochures. Visitors can also purchase tickets to popular Philadelphia attractions, including many of the impressive institutions located right outside its doors. M-Sa 9:30 am-5:30 pm, Su 9:30 am-5 pm. [www.PHLvisitorcenter.com/sistercities](http://www.PHLvisitorcenter.com/sistercities). 18th Street and Benjamin Franklin Parkway, 267.514.4760.



Jean Shin: Collections  
Opens March 24



Keith Smith at Home  
Through Jul 8

Design in Revolution:  
A 1960s Odyssey  
Through Sept 9

**Final Fridays: Louder, livelier, looser**  
5:00–8:45 p.m.

For more information, including a list of generous donors and organizers, visit us online.

Armed (detail), 2005-6, by Jean Shin (Courtesy of the artist); Book Number 296 (detail), December 2015, by Keith Smith (Courtesy of the artist); "Bob Dylan" Poster (detail), 1966, designed by Milton Glaser (Gift of Collab: The Group for Modern and Contemporary Design at the Philadelphia Museum of Art, 2002-146-1)

Philadelphia  
Museum of  
Art





# Dining



**Love and Honey**  
Todd and Laura Lyons' temple to fried chicken offers locally sourced, humanely raised birds that are never fed antibiotics or hormones. The result is back-to-basics quality stuff, along with fixins including macaroni and cheese, cornbread muffins and potato salad. [www.loveandhoneyfriedchicken.com](http://www.loveandhoneyfriedchicken.com). 1100 N. Front St., 215.789.7878. Map 1, L1



**Belgian Cafe**  
This pub offers an impressive selection of fresh PEI mussels and innovative vegan substitutions for many carnivore-faves, such as began BBQ wings and Korean-style BBQ seitan tacos. As for the brews, expect a dozen rare Belgian beers on tap and about 250 by the bottle. [www.thebelgiancafe.com](http://www.thebelgiancafe.com). 601. North 21st St., 215.235.3500 Map 1, F2



**A.Kitchen and Bar**  
Located on the ground floor of the AKA Rittenhouse Square, this cozy spot is a hidden gem. Not only is it centrally located, the food program here consistently makes "best of" lists for its thoughtful (and tasty) dishes and an award-winning wine list. [www.akitchenandbar.com](http://www.akitchenandbar.com). 135 S. 18th St., 215.825.7030. Map 1, G5

## Avenue of the Arts

**AQIMERO—New Latin.** Inside the lobby of the iconic Ritz-Carlton Philadelphia, across from City Hall, acclaimed chef Richard Sandoval serves up everything from sushi and ceviche to sustainably caught seafood creations with a Latin accent. B & D (Daily), L (M-F). [www.richardsandoval.com/aqimero](http://www.richardsandoval.com/aqimero). 10 Avenue of the Arts, 215.523.8200. \$\$\$ Map 1, H5

**VALANNI—Mediterranean.** Sleek yet laid-back, this neighborhood spot is a few blocks from the Avenue of the Arts. Tuck into modern Medi-Latin entrees and appetizers like spicy pulled chicken empanadas, lamb sliders and paella. D (Daily), Br (Su). [www.valanni.com](http://www.valanni.com). 1229 Spruce St., 215.790.9494. \$\$\$ Map 1, I6

**XIX (NINETEEN)—American.** For a special evening, take the elevator to the 19th floor of the Hyatt Philadelphia at The Bellevue. Settle in beneath the restaurant's spectacular pearl chandelier, or enjoy a meal in the more relaxed cafe space. L (M-F), D (Daily), Br (Su). [www.nineteenrestaurant.com](http://www.nineteenrestaurant.com). Broad and Walnut streets, 215.790.1919. \$\$\$ Map 1, H5

## Center City & Rittenhouse

**BAOLOGY—Taiwanese.** Husband-and-wife team, Judy Ni and Andy Tessier's first restaurant serves up fast-casual street food with a roster of ingredients that changes with the season. On the menu, find Ni's childhood favorites the way her grand-

mother made: Berkshire pork, shrimp and spinach potstickers; Taiwanese free-range fried chicken; wild-caught shrimp ruen bings (like a mini burrito). L (M-F), D (W-F). No phone. [www.baoology.com](http://www.baoology.com). 1829 John F. Kennedy Blvd. \$ Map 1, G4

**BAR BOMBÓN—Vegan.** Like the rest of the items on the menu here, the Puerto Rican empanadas and Venezuela-influenced arepas include only veggies. If time is tight, order tacos and stuffed plantains to go from the convenient takeout window. L, D (Daily). [www.barbombon.com](http://www.barbombon.com). 133 S. 18th St., 267.606.6612. \$\$\$ Map 1, G6

**BUTCHER AND SINGER—Steak.** This stunning steak and chop house from Stephen Starr has a modern supper-club vibe, thanks to 28-foot-high ceilings, seductive leather booths, bold draperies and two magnificent chandeliers. It's a glam setting for tucking into Starr's top-notch steaks and chops. L (M-F), D (Daily). [www.butcherandsinger.com](http://www.butcherandsinger.com). 1500 Walnut St., 215.732.4444. \$\$\$ Map 1, H5

**DIZENGOFF—Israeli.** Beard winner Michael Solomonov highlights his signature hummus with a simple menu: five variations rotated daily—think lamb, cabbage, chicken and beets—and come with pita, Israeli salad and pickles. Inside, picnic tables fill the cozy space, while outside, prime seats along Sansom Street make for great people watching in good weather. L, D (Daily). [www.dizengoffphilly.com](http://www.dizengoffphilly.com). 1625 Sansom St., 215.867.8181.

There's a lot more going on this April. Visit us online: [wheretraveler.com](http://wheretraveler.com)

\$ Map 1, H5; Whole Foods, 2101 Pennsylvania Ave. Map 1, G3

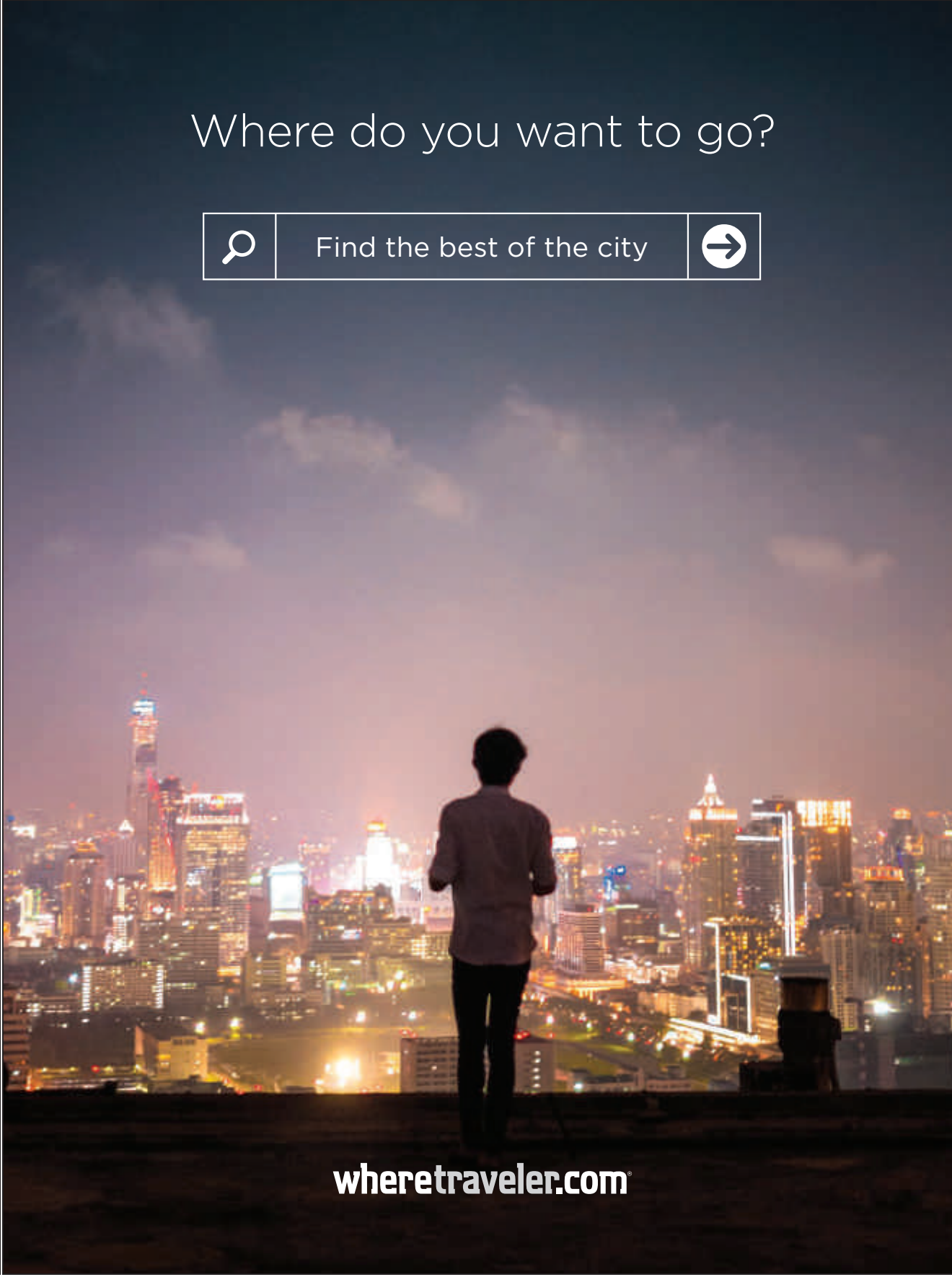
**ERAWAN THAI CUISINE—Thai.** This inviting BYOB offers tasty and authentic dishes with fresh ingredients. A friendly staff helps guests select spices to fit specific tastes. BYOB. L, D (T-Su). [www.erawanthaiphilly.com](http://www.erawanthaiphilly.com). 123 S. 23rd St., 215.567.2542. \$\$\$ Map 1, F5

**GOLDIE—Middle Eastern.** From James Beard winner Michael Solomonov and Steve Cook, owners of lauded Zahav, comes this fast-casual concept with a simple menu: falafel, fries and tahina shakes. Located above Rooster Soup Company. L, D (Daily). [www.goldiefalafel.com](http://www.goldiefalafel.com). 1526 Sansom St., 267.239.0777. \$ Map 1, H5


**HARP & CROWN—American.** Upstairs, a vintage-wallpapered 140-seat dining room provides Old World-style ambiance, while downstairs, a bar and two-lane, reservations-only bowling alley called Elbow Lane keep revelers entertained. For sustenance, find wood-fired pizza, charcuterie and New American entrees, plus a distinctive cocktail list. D (Daily), Br (Sa-Su). [harpandcrown.com](http://harpandcrown.com). 1525 Sansom St., 215.330.2800. \$\$\$ Map 1, H5

**R2L—American.** On the 37th floor of Two Liberty Place, Chef Daniel Stern gives modern twists to traditional American flavors. The stunning skyline views make R2L one of Philly's most spectacular dining destinations. D (Daily). [www.r2lrestaurant.com](http://www.r2lrestaurant.com). 50 S. 16th St., 37th floor, 215.564.5337. \$\$\$ Map 1, H5


 **HISTORIC HOT SPOT** Opened in 1773, City Tavern (page 28) still serves the dishes once favored by regulars like Thomas Jefferson and Benjamin Franklin.



Where do you want to go?



Find the best of the city



wheretraveler.com

(FROM LEFT) ©DUSTIN DEVOE; COURTESY BELGIAN CAFE; ©CHAUCÉE STILLMAN



**SEAFOOD UNLIMITED—Seafood.** Located just off of Rittenhouse Square, this intimate neighborhood favorite specializes in simply prepared fresh fish and seafood selections. D (M-Sa). [www.seafoodunlimited.com](http://www.seafoodunlimited.com). 270 S. 20th St., 215.732.3663. \$\$\$ Map 1, G6

**VEDA—Indian.** This dining room sets an elegant tone for a menu of Northern Indian food with a modern bistro touch. The menu includes small plates like masala crab cakes and scallops dressed in a roasted pepper chutney. Mains include familiar favorites, plus out-of-the-box options like a curry with tofu and peas. A selection of tandoori meats and roti breads rounds out the tasty offerings, with a full bar pouring wine, beer and craft cocktails. L, D (Daily). [www.vedaphilly.com](http://www.vedaphilly.com). 1920 Chestnut St., 267.519.2001. \$\$ Map 1, G5

**VERNICK FOOD & DRINK—American.** Modern refinement and perfect ingredients are the hallmarks of this husband-and-wife operation. James Beard winning chef Greg Vernick's thoughtful menu of global plates showcases techniques he perfected while working in kitchens with Jean-Georges Vongerichten around the world. Don't miss the delectable entrees roasted in a wood oven, including the organic Amish chicken. Reservations recommended. D (Tu-Su). [www.vernickphilly.com](http://www.vernickphilly.com). 2031 Walnut St., 267.639.6644. \$\$\$ Map 1, G5

## Chinatown

**NAN ZHOU HAND DRAWN NOODLE HOUSE—Chinese.** The fresh soups and handmade noodles alone make Nan Zhou a must-stop Chinatown destination. BYOB, cash only. L, D (Daily). [www.nanzhounoodlehouse.com](http://www.nanzhounoodlehouse.com). 1022 Race St., 215.923.1550. \$ Map 1, J4

**VIETNAM RESTAURANT—Vietnamese.** This beloved hole-in-the-wall eatery located in the heart of Chinatown serves authentic Vietnamese cuisine at accessible prices. On the third floor is Bar Saigon, modeled after 1930s Saigon dance clubs, where guests sing karaoke while sipping tasty cocktails. L, D (Daily). [www.eatatvietnam.com](http://www.eatatvietnam.com). 221 N. 11th St., 215.592.1163. \$\$ Map 1, I4

## Convention Center

**MOLLY MALLOY'S—Pub/Bar.** Nestled in the heart of the historic Reading Terminal Market, this airy gastropub from the folks behind Iovine Brothers produce serves seasonal fare from chef Bobby Fisher and pours craft beers, 24 of which are on draft. B, L, D (Daily). [www.mollymalloysphilly.com](http://www.mollymalloysphilly.com). Reading Terminal Market, 1136 Arch St., 267.525.1001. \$ Map 1, I4

**READING TERMINAL MARKET—International.** Founded in 1893, Reading Terminal Market has evolved into one of Philadelphia's major dining destinations, a food mecca where you can taste international and local specialties, including cheesesteaks and Pennsylvania Dutch treats. B, L, D (Daily). [www.readingterminalmarket.org](http://www.readingterminalmarket.org). 12th and Arch streets, 215.922.2317. \$ Map 1, I4

## East Passyunk Avenue

**BING BING DIM SUM—Dim Sum.** This spot brings a new, modern spin on the classic dim sum. Look for traditional soup dumplings alongside roast pork bao filled with sharp provolone and long hots, plus crispy lamb rolls and congee made with butternut squash. Pair all that goodness with a

shareable pitcher of cocktails. L (F-Su), D (Daily). [www.bingbingdimsum.com](http://www.bingbingdimsum.com). 1648 E. Passyunk Ave., 215.279.7702. \$

**NOORD—Dutch/Scandinavian.** This classic BYOB bistro with a Northern European focus features locally farmed produce and meats, served in a relaxed and friendly atmosphere. Breads and desserts are made in-house, as are the smoked and cured fish and meats. All you have to do is bring the wine. D (W-Su), Br (Su). [www.noordphilly.com](http://www.noordphilly.com). 1046 Tasker St., 267.909.9704. \$\$\$

**STARGAZY—British.** The lunch and supper (read: early dinner) crowd here digs into hearty, regional British cuisine. Pie and mash is a staple of the menu, and flavors run the gamut from traditional beef and onion to daily specials. Other house-made noshes include sausage rolls, Cornish pasties, and banoffee pie. 1838 E. Passyunk Ave., 215.309.2761. \$

## Manayunk

**BOURBON BLUE—American.** This hotspot features New American cuisine with a New Orleans accent. Dig into favorites like Southern fried chicken, jambalaya and country-style ribs. On weekends, the Canal Lounge offers live entertainment. D (Daily), Br (Sa-Su). [www.bourbonblue.com](http://www.bourbonblue.com). 2 Rector St., 215.508.3360. \$

**THE JUICE MERCHANT—Health Food.** Using 100 percent organic ingredients, The Juice Merchant is the go-to place for the health conscious. Looking to make health food convenient, the shop has a full menu of cold-pressed juices, smoothies and vegan salads and sandwiches. B, L, D (M-Sa) [www.thejuicemerchant.com](http://www.thejuicemerchant.com). 4330 Main St., 215.483.8888. \$

**OLD EAGLE TAVERN—Tavern.** One of the best-kept secrets in Manayunk, this Old World-style tavern specializes in reinvented bar fare and an extensive beer collection, including excellent crafts, 11 rotating drafts and 60+ bottles. D (Daily), Br (Sa-Su). [www.oldeagle tavern.com](http://www.oldeagle tavern.com). 177 Markle St., 215.483.5535. \$\$

## Midtown Village

**BARBUZZO—Mediterranean.** The rustic furnishings here set a cozy vibe for the Mediterranean-influenced dishes and well-stocked bar. Reserve a table for simple, yet flavorful fare, including roasted bone marrow, pan-seared gnocchi and grilled fresh fish. L (M-Sa), D (Daily). [www.barbuzzo.com](http://www.barbuzzo.com). 110 S. 13th St., 215.546.9300. \$\$\$ Map 1, I5

**CHEU NOODLE BAR—Asian.** This cozy spot focuses on noodle bowls with a variety of ingredients. The miso ramen bowl is a favorite and comes with pork shoulder, a soft-boiled egg and black garlic. Small plates include creative (not to mention tasty) fare like black garlic wings and pork pizza dumplings. L, D (Daily). [www.cheunoodlebar.com](http://www.cheunoodlebar.com). 255 S. 10th St., 267.639.4136. \$ Map 1, I6; 1416 Frankford Ave., 267.758.2269.

## Old City

**CITY TAVERN—American.** At this reconstructed tavern used by delegates to the First and Second Continental Congresses, enjoy a Colonial-style meal by acclaimed chef Walter Staib. Visitors are also welcome to walk through to take in the history. L, D (Daily). [www.citytavern.com](http://www.citytavern.com). 138 S. 2nd St. at Walnut, 215.413.1443. \$\$ Map 1, K5

*Where Tradition Meets Invention*

Authentic Indian Cuisine,  
Craft Cocktails &  
Contemporary Atmosphere

Lunch: 11:30 AM - 2:30 PM  
Dinner: 5:00 PM - 10:00 PM

Happy Hour  
Mon - Fri: 5:00 PM - 7:00 PM  
Sat - Sun: 6:00 PM - 8:00 PM

1920 Chestnut St.  
Philadelphia, PA 19103  
267-519-2001

[www.vedaphilly.com](http://www.vedaphilly.com)

Veda

READING TERMINAL MARKET  
12th & Arch Streets  
Philadelphia, PA 19107

SHOP LOCAL  
A PHILADELPHIA TRADITION

Discover the diversity of fresh and prepared foods available at the Market. From Amish made breakfasts to international cuisines- we've got something for everyone's appetite.

Diverse. Charming. Inspiring. Delicious.  
Shop Reading Terminal Market. All under one roof.

Open Every Day from 8 AM - 6 PM  
215-922-2317 • [ReadingTerminalMarket.org](http://ReadingTerminalMarket.org)

[f](#) [i](#) [t](#) [RdgTerminalMkt](#) [#LoveRTM](#) [#RTMcook](#)

## THIS IS HOW IT'S DONE



*Jim's South St.*  
PHILADELPHIA

STEAKS & HOAGIES

215.928.1911 • 4TH & SOUTH ST. • PHILADELPHIA • [JIMSSOUTHSTREET.COM](http://JIMSSOUTHSTREET.COM)

[f](#) [i](#) [t](#) [JIMSSOUTHSTREET](#) [@JIMSSOUTHSTREET](#) [#JIMSSOUTHSTREET](#)

OPEN EVERY DAY 'TIL LATE



**FORK—American.** One of Old City's original restaurant pioneers, Fork offers simple elegance with an open kitchen. Menu changes often. D (Daily), Br (Su). [www.forkrestaurant.com](http://www.forkrestaurant.com). 306 Market St., 215.625.9425. \$\$\$ Map 1, K5

**THE OLDE BAR—Seafood.** This Jose Garces spot respects tradition with seafood and standouts like crab cake Benedict and Olde Bar fries with crab, lobster butter and oyster stout-cheddar fondue. D (Daily), Br (Sa-Su). [www.theoldebar.com](http://www.theoldebar.com). 125 Walnut St., 215.253.3777. \$\$ Map 3, K5

**ROYAL BOUCHERIE—French.** "Top Chef" winner Nicholas Elmi's highly anticipated butchery fits right in with Old City's historical vibe. The cozy two-level space features two bars (one for drinks and the other for oysters) with exposed brick walls, a tin ceiling and antique furnishings. But the mood is anything but dusty. Diners of all generations dig into hearty dishes like lamb crepinette and steak au poivre in stick-to-your-ribs portions, while a feel-good soundtrack veers from Ella Fitzgerald to Stevie Wonder and Arcade Fire. Cocktail connoisseurs find classics and contemporary choices, while oenophiles look to a Euro-heavy list. D (Daily). [www.royalboucherie.com](http://www.royalboucherie.com). 52 S. 2nd St., 267.606.6313. \$\$\$ Map 1, K5

**ZAHAV—Middle Eastern.** At his heralded restaurant perched above the street, James Beard-winning chef Michael Solomonov carefully prepares creative, contemporary Israeli food. A well-edited a la carte menu highlights small plates and salami—a colorful collection of cold salads that traditionally start meals in Israel. The "Tayim" tasting option offers a good base for those new to the cuisine and includes Solomonov's famous hummus (we like the Turkish variety, which is served warm in its own mini cast-iron pan) and feather-light laffa bread. Heftier fare include coal-fired kebabs and a crowd-pleasing braised lamb shoulder. Inventive cocktails; wine list with Israeli varietals. Reservations recommended. D (Daily). [www.zahavrestaurant.com](http://www.zahavrestaurant.com). 237 Saint James Place, 215.625.8800. \$\$ Map 1, K6

## Parkway District & Fairmount

**LA CALACA FELIZ—Mexican.** Bright murals adorn this cheery mod-Mex spot headed by Chef Timothy Spinner. With over 50 varieties of tequila and an extensive margarita menu, the adventurous imbibers will likely never get bored, especially with the added benefit of ingredients like moonshine and chili powder. D (Daily), Br (Su). [www.lacalaca feliz.com](http://www.lacalaca feliz.com). 2321 Fairmount Ave., 215.787.9930. \$\$ Map 1, F2

**SKYBRUNCH AT THE VISTA ROOM—American.** Sunday brunch at this dining room located 50 stories above ground is served with panoramic views of the Benjamin Franklin Parkway and beyond. Explore six curated food stations for a flat fee and enjoy delicious themed cocktails. B, Br (Su). [www.skybrunch.com](http://www.skybrunch.com). Top of the Tower, 1717 Arch St., 215.557.1999. \$\$\$ Map 1, G4

## Penn's Landing & Waterfront

**CHART HOUSE—Seafood.** Waterfront views of Penn's Landing, the Delaware River and the Philadelphia skyline set a dramatic stage for updated classic steaks and seafood entrées, along with renowned prime rib specials. D (Daily), Br (Su). [www.chart-house.com](http://www.chart-house.com). 555 S. Columbus Blvd., 215.625.8383. \$\$ Map 1, L7

**HUGO'S FROG BAR AND CHOP HOUSE—Steakhouse.**

Treat yourself to an authentic Chicago dining experience, which includes USDA Gibsons Prime Angus Beef as well as other favorites like fresh fish and seafood, salads and sandwiches. An extensive wine list, waterfront views and live entertainment add to the special vibe. Inside Sugar House Casino. [www.sugarhousecasino.com/dining/hugo-s-frog-bar-chop-house](http://www.sugarhousecasino.com/dining/hugo-s-frog-bar-chop-house). 1001 N. Delaware Ave., 215.717.3900. \$\$\$-\$\$\$\$ Map 1, L1

**KEATING'S ROPE & ANCHOR, BAR + KITCHEN—**

**Contemporary American.** Spend an afternoon on the patio of Hilton's Penn Landing outpost, tucking into oak-smoked salmon or a New York strip steak while gazing out at the Delaware River. Inside, a buzzy bar pours hand-crafted cocktails to the tunes of a live band. B, L, D (Daily). [www.hiltonpennsland.com/keatings-rope-anchor.shtml](http://www.hiltonpennsland.com/keatings-rope-anchor.shtml). 201 S. Columbus Blvd., 215.521.6509. \$\$\$ Map 1, L5

**LA PEG—French.**

This contemporary brasserie and beer garden is located inside the FringeArts building along the Delaware River Waterfront. The crowd-pleasing menu features dishes like beef tartare, steak frites, butternut squash soup and cheeseburgers. D (Daily), Br (Sa-Su). [www.lapegbrasserie.com](http://www.lapegbrasserie.com). 140 N. Columbus Blvd., 215.375.7744. \$\$ Map 1, L4

**South Philly & Italian Market**

**FEDERAL DONUTS—Sweets.** James Beard winner Michael Solomonov's little gem offers fresh cake doughnuts at 7 am, and then serves Korean-style fried chicken from noon until they run out. B, L (Daily). [www.federaldonuts.com](http://www.federaldonuts.com). 1219 S. 2nd St., 267.687.8258. \$ 1632 Sansom St., 215.665.1101. Map 1, H5

**GENO'S STEAKS—Cheesesteaks.** Geno's serves up classic steaks with Philly flair. The inevitable line provides time to figure out what to order; when you get to the counter, make it fast and simple. Cash only. B, L, D (Daily, 24 hrs.). [www.genossteaks.com](http://www.genossteaks.com). 1219 S. Ninth St., 215.389.0659. \$

**GREEN EGGS CAFE—American.** This restaurant with two locations is a favorite for mouth-watering breakfast and lunch dishes like smoked Atlantic salmon omelet, Belgian waffles and a variety of sandwiches and salads. Cash only. B, L, Br (Daily). [www.greeneggscfe.net](http://www.greeneggscfe.net). 212 S. 13th St., 267.861.0314. \$ Map 1, H5; 1306 Dickinson St., 215.266.3447; 719 N. Second St., 215.922.3447.

**JIM'S SOUTH STREET—Cheesesteaks.** Since 1976, visitors and locals alike have been flocking to this temple to cheesesteak inside an Art Deco storefront on lively South Street. Hoagies, too. L, D (Daily). [www.jimssouthstreet.com](http://www.jimssouthstreet.com). 400 South St., 215.928.1911. \$ Map 1, K7

**NINA'S TRATTORIA—Contemporary Italian.** This supper club inside the Italian Market serves Sicilian family specialties, along with traditional and contemporary fare from regions including Abruzzo, Calabria and Tuscany. The feather-light gnocchis are among many must-tries on the menu. L (Sa-Su), D (Tu-Su). [www.ninatrattoria.com](http://www.ninatrattoria.com). 910 S. 9th St., 215.574.9995. \$ Map 1, J8

**PAT'S KING OF STEAKS—Cheesesteaks.** Billed as the originator of the cheesesteak, this shop is a favorite that attracts fans from around the world. Local tip: Order "Whiz wit." B, L, D (Daily, 24 hrs.). [www.patskingofsteaks.com](http://www.patskingofsteaks.com). 1237 E. Passyunk Ave., 215.468.1546. \$

**South Street & Queen Village**

**BRAUHAUS SCHMITZ—German.** This Philly original claims the largest selection of German beer in the city with 20 on draft and more than 80 bottles from 25 countries. Executive Chef Jeremy Nolen prepares classic German fare like house-made bratwurst, schweinshaxe and schnitzel. L, D (Daily). [www.brauhauschmitz.com](http://www.brauhauschmitz.com). 718 South St., 267.909.8814. \$-\$\$ Map 1, J7

**ELA—American.** The kitchen at this bar and restaurant is run by Chef Jason Cichonski and features an inventive, rotating menu, an extensive wine and beer program and an inspired cocktail list. The modern yet rustic setting allows diners a comfortable place to enjoy seriously good food. D (Daily), Br (Su). [www.elaphilly.com](http://www.elaphilly.com). 627 S. 3rd St., 267.687.8512. \$\$ Map 1, K7

**THE TWISTED TAIL—American.** This lively bourbon-and-blues emporium features a menu of charcoal-grilled fare, 40+ bourbons and plenty of craft beer. Dine at rustic wooden table indoors or out, then climb up the stairs for some rockin' live music. L (M-F), D (Daily), Br (Sa-Su). [www.thetwistedtail.com](http://www.thetwistedtail.com). 509 S. 2nd St., 215.558.2471. \$ Map 1, K6

**WHETSTONE TAVERN—American.** At this well-regarded neighborhood spot, Chef Jeremy Nolen crafts dishes with a modern touch. The menu features familiar and approachable fare with a focus on simple preparations and fresh ingredients from local farms and producers when possible. D (Daily). [www.whetstonetavern.com](http://www.whetstonetavern.com). 700 S. 5th St., 267.909.8814. \$ Map 1, J7

**University City**

**CITY TAP HOUSE—American.** Located on the balcony of The Radian, City Tap House boasts 60 draft beers, including rare and sought-after craft brews. Chef Al Paris offers new American pub fare including "Daily Supper" specials. Dine on the terrace, or have a cocktail around one of five stone fire pits overlooking Walnut Street. L, D (Daily), Br (Sa-Su). [www.citytaphouse.com](http://www.citytaphouse.com). 3925 Walnut St., 215.662.0105. \$ Map 1, C5; 2 Logan Square, 215.587.9040.

**DISTRITO—Mexican.** From Philly's acclaimed chef and restaurateur, Jose Garces, comes this high-energy spot with a menu of fresh interpretations of classics inspired by the spirited culture and cuisine of Mexico City. L, D (Daily). [www.distritorestaurant.com](http://www.distritorestaurant.com). 3945 Chestnut St., 215.222.1657. \$ Map 1, C5

**MARIGOLD KITCHEN—American.** Located inside a traditional Victorian row house, this restaurant features the culinary alchemy of Andrew Kochan and Tim Lanza. Each build tasting menus meant to "surprise," with dishes drawing from the seasons that are as beautiful to look at as they are tasty to eat. BYOB. D (Tu-Sa). [www.marigoldkitchenbyob.com](http://www.marigoldkitchenbyob.com). 501 S. 45th St., 215.222.3699. \$\$\$ Map 1, A7

**VIETNAM CAFE—Vietnamese.** With this small but sleek outpost of Chinatown's popular Vietnam Restaurant, owner Benny Lai has brought his beloved Vietnamese cuisine to the University City neighborhood. Expect savory noodle soups and dishes, seafood, rice platters and the chef's special barbecued appetizer sampler. L, D (Daily). [www.eatatvietnam.com](http://www.eatatvietnam.com). 816 S. 47th St., 215.729.0260. \$

**Vietnam Restaurant**  
221 North 11th St.  
PHILA., PA 19107  
215-692-1183  
Fri-Sat 11 am - 10:30 pm  
Sun-Thurs 11 am - 8:30 pm

**Vietnam Cafe**  
816 South 47th St.  
PHILA., PA 19134  
215-792-0260  
Mon-Thurs 11:30 am - 8 pm  
Fri 11:30 am - 9:30 pm  
Sat 12 - 8:30 pm  
Sun 12 - 8 pm

[www.eatatvietnam.com](http://www.eatatvietnam.com)  
Delivery available through trycaviar.com

**Happy Easter**  
The First Thai Restaurant in Philadelphia  
BYOB

**3 COURSE LUNCH & DINNER SPECIALS AVAILABLE**  
Dine in • Take out • Closed Monday  
Free Delivery (Limited Area)  
Order online, special promotions and make reservation online  
**123 S. 23rd Street**  
**215.567.2542**  
See our website for special promotions:  
[www.erawanphilly.com](http://www.erawanphilly.com)

who: you  
what: this cheesesteak  
where: 9th + Passyunk  
when: now  
why: really?



Specializing in California-style burritos featuring fresh ingredients in sumptuous portions at affordable prices.

Lunch and Dinner  
BYOB

**el fuego**

723 Walnut Street • 215.592.1931  
[Facebook.com/elfuegoburritosphilly](https://www.facebook.com/elfuegoburritosphilly)  
[www.elfuegophilly.com](http://www.elfuegophilly.com)

**Washington Square**

**EL FUEGO—Mexican.** This happening spot whips up tasty "California-style" burritos, along with tacos, quesadillas and soups. The lunch hour is particularly lively, so get there early. L (Daily), D (M-F). [www.elfuegoburritos.com](http://www.elfuegoburritos.com). 723 Walnut St., 215.592.1931. \$ Map 1, J5

**GARCES TRADING COMPANY—American.** Philadelphia's prolific Iron Chef, Jose Garces, delivers gourmet goods at his market, bakery, barista bar and cafe. One of the best features may be the curated wine, beer and spirits available inside the market. L (M-F), D (Daily), Br (Sa-Su). [www.garcestadingcompany.com](http://www.garcestadingcompany.com). 1111 Locust St., 215.574.1099. \$ Map 1, I6

**MORIMOTO—Japanese.** This stunning brainchild of Iron Chef Masaharu Morimoto and restaurant guru Stephen Starr features inventive Japanese cuisine and the freshest sushi on the block. The chef's prix-fixe menu is particularly noteworthy. Reservations recommended. L (M-F), D (Daily). [www.morimotorestaurant.com](http://www.morimotorestaurant.com). 723 Chestnut St., 215.413.9070. \$\$\$ Map 1, J5

**RISTORANTE LA BUCA—Italian.** This romantic spot near Washington Square Park exudes Old World charm with specials like fresh seafood, brought to diners on a cart before preparation. L (M-F), D (M-Sa). L (M-F), D (M-Sa). [www.ristolabuca.com](http://www.ristolabuca.com). 711 Locust St., 215.928.0556. \$ Map 1, J6

**TALULA'S GARDEN—American.** With a varied garden-to-table menu and extensive wine list, Talula's offers adventurous eaters delicious options like marinated halibut and oxtail stuffed artichoke barigoule with sea beans and saffron. Snag a seat in the charming outdoor garden in good weather. D (Daily), Br (Su). [www.talulasgarden.com](http://www.talulasgarden.com). 210 W. Washington Square, 215.592.7787. \$\$\$ Map 1, J6

**Washington Square West**

**AMIS—Italian.** At this convivial trattoria (one of three Philadelphia eateries by celebrated Chef Marc Vetri), dig into tapas-style fare like short ribs with hot peppers, pork chop with parmesan and grilled shrimp with chilies and cucumber. D (Daily), Br (Su). [www.amisphilly.com](http://www.amisphilly.com). 412 S. 13th St., 215.732.2647. \$\$\$ Map 1, I6

**BUD AND MARILYN'S—American.** Head toward the neon sign on 13th & Locust to this mid-century joint that's garnered plenty of buzz. In "Mad Men"-style environs, tuck into upgraded retro classics including fried chicken with house-made hot sauce and short rib stroganoff. On Sundays, groups and diners with kids in tow dig into the "Meat-and-Three," a family-style dinner with all the fixings—biscuits and jam, farm-fresh salads and sides. D (Daily). [www.budandmarilyns.com](http://www.budandmarilyns.com). 1234 Locust St., 215.546.2220. Map 1, I6

**VEDGE—Vegan.** Husband-and-wife team Rich Landau and Kate Jacoby give vegan cuisine a good name at their inventive, modern bistro inside a handsome row house. In the chef's deft hands, roots and leaves become the stuff of haute cuisine in dishes like "campfire gold potatoes" with black garlic tahina and baby shiitake mushrooms. Cocktails with house-made syrups and bitters are also musts. Reservations required. D (M-Sa). [www.vedgerestaurant.com](http://www.vedgerestaurant.com). 1221 Locust St., 215.320.7500. \$\$\$ Map 1, I6



# Entertainment



## Frankford Hall

This open-air, German-style beer garden might be Stephen Starr's liveliest spot. Counter service, communal tables and alfresco ping-pong encourage socializing, as do the steins of traditional German and craft beers, paired with classic dishes. [www.frankfordhall.com](http://www.frankfordhall.com). 1210 Frankford Ave., 215.634.3338.



## Clubhouse Sports Lounge

Newly opened near Rittenhouse Square, this 10,000-sq.-ft. complex reinvents a night out in Philly by offering a one-stop shop combining an all-day sports bar, a chill ice bar, and not one, but two escape rooms with themes like "Escape the Titanic" and "Casino Heist." [www.clubhousephilly.com](http://www.clubhousephilly.com). 111 S. 17th St., 215.564.1515. Map 1, G5



## Cuba Libre

This Old City nightclub transports patrons 1,200 miles to Cuba's Old Havana. Inside, find environs designed to evoke a traditional Cuban café, making a festive backdrop for dancing to Latin tunes every Friday and Saturday night. [www.cubalibrerestaurant.com](http://www.cubalibrerestaurant.com). 10 S. 2nd St., 215.627.0666. Map 1, K5

## Arcades & Billiards

**ARNOLD'S FAMILY FUN CENTER**—One of the largest indoor fun centers in the United States features electric go-karts, bumper cars, crazy cars, a bounce zone, laser tag, black-light mini golf and bowling lanes. Cafe, bistro and bar. Hours vary by season. [www.arnoldsfcc.com](http://www.arnoldsfcc.com). 2200 West Drive, Oaks, Pa., 610.666.0600.

**BARCADE**—As the name suggests, this cavernous space in Fishtown ingeniously combines a bar with an arcade, serving a stellar selection of craft beer to lovers of old-school games like Donkey Kong, Ms. Pacman and Space Invaders, which are all just \$.25 a game. Must be 21 or older to enter. M-Su noon-2 am. [www.barcadephiladelphia.com](http://www.barcadephiladelphia.com). 1114 Frankford Ave., 215.634.4400.

**BUFFALO BILLIARDS**—Kick back at this casual Old City spot and enjoy happy hour specials as you chill out in one of the leather banquettes. For relaxation with a competitive edge, shoot pool at one of eight tables or choose from darts, shuffle board, skee-ball or foosball. M-F 4 pm-2 am, Sa-Su 2 pm-2 am. [www.buffalobilliards.com](http://www.buffalobilliards.com). 118 Chestnut St., 215.574.7665. Map 1, K5

## Bars & Lounges

**THE BARDS**—A purist's Irish pub that encourages sipping pints of Guinness and shots of Tullamore Dew, this Center City tavern makes an ideal spot for winding down at the end of the day. M-F

12 am-2 am, Sa-Su 10 am-2 am. [www.bardshirishbar.com](http://www.bardshirishbar.com). 2013 Walnut St., 215.569.9585. Map 1, G5

**MILKBOY**—These popular bars double as live music venues, featuring both local and nationally recognized performers. Each location boasts a signature roll-up garage-style window, weekday morning cocktails and delicious American food. It's free to hang out, but shows are usually ticketed. M-F 7 am-2 am, Sa-Su 11 am-2 am. [milkboyphilly.com](http://milkboyphilly.com). 1100 Chestnut St., 215.925.6455. \$5 Map 1, I5

**MONK'S**—For more than 20 years, this Center City spot has been earning raves throughout Philadelphia for its top selection of beer and a tasty food menu to boot. Located just off Spruce Street, Monk's occasionally gets limited distribution kegs shipped in from the farthest reaches of the country. Daily 11:30 am-2 am. [www.monkscafe.com](http://www.monkscafe.com). 264 S. 16th St., 215.545.7005. Map 1, H6

**PHILADELPHIA DISTILLING**—This modern warehouse in hip Northern Liberties makes a stunning setting not only for sampling spirits, but also for watching the distilling process. Hand-hammered copper stills and wooden fermentation vessels form the crux of the process here, one that dates back to 1854. Retail: Th-Su noon-11 pm. Bar: Th-F 4-11 pm, Sa-Su 1-11 pm. Tours/tasting: Th, F 6 pm; Sa-Su 2, 4 and 6 pm (book online). [www.philadelphiadistilling.com](http://www.philadelphiadistilling.com). 25 E. Allen St., 215.671.0346.

**THE RANSTEAD ROOM**—Hidden off a side street adjacent to restaurant El Rey, this dimly lit enclave serves libations minted at the turn of the century in true speakeasy style. Look for the "RR" on the door. Daily 6 pm-2 am. 2013 Ranstead St., 215.563.3330. Map 1, G5

**THE VICTORIA FREEHOUSE**—This authentic British pub brings London to Philly with craft beers, ciders and cask ales imported from the UK. Pair your pint with traditional pub favorites like bangers and mash and sticky toffee pudding. M-Sa noon-midnight, Su noon-4 pm. [www.victoriafreehouse.com](http://www.victoriafreehouse.com). 10 S. Front St., 215.543.6089. Map 1, J5

**VINTAGE**—This gorgeous Midtown Village wine bar has an impressive list of reds, whites and everything in between. It's vino without the pretension. M-F 4 pm-2 am, Sa-Su 11 am-2 am. [www.vintage-philadelphia.com](http://www.vintage-philadelphia.com). 129 S. 13th St., 215.922.3095. Map 1, I5

## Casinos

**PARX CASINO**—Located about 20 miles north of Center City by way of I-95 or the PA Turnpike, Parx is worth the trip. This 150,000-sq.-ft. venue boasts 3,330 slot machines, 132 live table games, a 48-table poker room and a variety of restaurants and bars, plus thoroughbred horse racing at Parx Racing and a new 1,500-seat entertainment venue called Xcite Center. Complimentary parking. Daily

24 hours. [www.parxcasino.com](http://www.parxcasino.com). 2999 Street Road, Bensalem, Pa., 888.588.7279. Map 4, C3

**SUGARHOUSE CASINO**—Wager on having a fantastic time at this 45,000-square-foot casino on the Delaware River waterfront in the Fishtown neighborhood. The huge gaming floor offers slots, as well as live table games such as craps, blackjack and poker. Onsite dining, free parking and valet available. Daily 24 hours. [www.sugarhousecasino.com](http://www.sugarhousecasino.com). 1001 N. Delaware Ave., 877.477.3715. Map 1, L1

## Classical & Opera

**OPERA PHILADELPHIA**—Philly's premier opera company stages a full season of opulent productions. Not only does this company present classics with rich precision, but it also produces new and innovative operas. This month: "Carmen," April 27 & 29. [www.operaphila.org](http://www.operaphila.org). Academy of Music, Broad and Locust streets, 215.893.1999. Map 1, H6

**PHILADELPHIA CHAMBER MUSIC SOCIETY**—With a mission of making classical music accessible to a wide audience, the Chamber Music Society performs more than 60 concerts annually. Performances are regularly held in the intimate Perelman Theater at the Kimmel Center. This month: Bretano Quartet with Marina Piccinini, April 4; Danish Quartet, April 5; Natalie Zhu, April 10; Decoda, April 11; Tre Voci, April 16; Gerald Finley and Julius Drake, April 20. [www.pcmsconcerts.org](http://www.pcmsconcerts.org). Kimmel

Center for the Performing Arts, 300 S. Broad St., 215.569.8080. Map 1, H6

**THE PHILLY POPS**—Michael Krajewski leads one of America's premier pops orchestras through a repertoire of classical, swing, Broadway, blues and jazz. This month: Sinatra and Friends, April 6-8; Pop Rocks: Queen, Stones, Zeppelin and More, April 27-29. [www.phillypops.org](http://www.phillypops.org). Kimmel Center for the Performing Arts, 300 Broad St., 215.893.1999. Map 1, H6

## Comedy

**HELIUM COMEDY CLUB**—Local talent and national headliners take the stage at this club, just off Rittenhouse Square. This month: Jimmy O. Yang, April 4; Kyle Kinane, April 5-7; T.J. Miller, April 12-15; Andrew Schulz, April 20-21; Don Jamieson, April 22; Brad Williams, April 26-28. [www.heliumcomedy.com](http://www.heliumcomedy.com). 2031 Sansom St., 215.496.9001. Map 1, G5

**PUNCH LINE PHILLY**—A part of the thriving entertainment scene in Fishtown, this comedy club, restaurant and bar will send you laughing all the way home with new performances each week. The 300-seat venue features VIP seating and an outdoor patio. The bar offers local craft beers, cocktails and wines by the glass. This month: Liza Tryger, April 5-7; Dulce Salon, April 13-14; Frankie Quinones, April 19-21; JP Sears, April 27-28. [www.punchlinephilly.com](http://www.punchlinephilly.com). 33 E. Laurel St., 215.606.6555.

## Concert Venues

**ELECTRIC FACTORY**—Big-name and up-and-coming acts appear at this cavernous, mostly standing-room venue with a busy calendar. Ticket prices and show times vary. This month: Ja Rule with Method Man and Redman, April 7; As The Crow Flies, April 18; Built to Spill & Afghan Whigs, April 21; Matt and Kim, April 22; Minus The Bear, April 28. [www.electricfactory.info](http://www.electricfactory.info). 421 N. Seventh St., 215.627.1332. Map 1, J3

**THE FILLMORE PHILADELPHIA**—Fishtown's legendary Ajax Metal Factory has been transformed into a state-of-the-art 2,500 capacity venue, honoring the traditions of historic Fillmore music halls and weaving in some Philly flavor. On the top floor, The Foundry serves as a smaller venue where local bands and DJs take the stage. This month: The Night Game, April 2; Ripe, April 5; Gramatik, April 12; Franz Ferdinand, April 13; The Disco Biscuits, April 19-21; Baths, April 20; The Residents, April 26; Assembly of Dust, April 28. [www.thefillmorephilly.com](http://www.thefillmorephilly.com). 29 E. Allen St., 215.309.0150. Map 1, L1

**THEATRE OF THE LIVING ARTS (TLA)**—This former movie house is now a two-story music venue featuring popular touring bands and a funky boho vibe. This month: James Bay, April 6; Anderson East, April 7; 5 Seconds of Summer, April 9; Skizzy Mars, April 13; Bucklehead, April 18; Tesseract, April 20; Kate Nash, April 26; Echosmith, April 27;

There's a lot more going on this April. Visit us online: [wheretraveler.com](http://wheretraveler.com)

(FROM LEFT) COURTESY STARR RESTAURANT GROUP; ©STEPHEN BONDIO; ©D. CRUZ/VISIT PHILADELPHIA®

**DRINK SPECIALS**  
MON-FRI 4-7PM

**COMPLIMENTARY BUFFET**  
7 DAYS A WEEK FROM 5-7PM

**EXPRESS LUNCH SPECIALS**  
MON-FRI 11:30AM-3PM

**FREE ADMISSION**  
WITH HOTEL KEY  
OR GAME DAY TICKET STUB

**DELILAH'S**  
THE GENTLEMEN'S CLUB & STEAKHOUSE

100 SPRING GARDEN STREET • PHILADELPHIA  
FREE PARKING • FULL MENU/LATE NIGHT DINING  
215.625.2800 • [WWW.DELILAHS.COM](http://WWW.DELILAHS.COM)

**FUN LOVERS** Can't get enough after-hours excitement? For more bars, clubs, live music shows and theater, visit [www.wheretraveler.com/Philadelphia](http://www.wheretraveler.com/Philadelphia).



Protest The Hero **April 29**. [www.inphilly.com](http://www.inphilly.com). 334 South St., 215.922.1011. **Map 1, K7**

**UNION TRANSFER**—Originally built as a luggage terminal in the early 1900s, this mid-size music hall boasts towering arches, elegant chandeliers and stained glass for a dramatic yet intimate atmosphere. Separate bar area for the 21+ crowd. This month: Cigarettes After Sex, **April 3**; Yo La Tengo, **April 7**; Rainbow Kitten Surprise, **April 12**; Lotus, **April 13-14**; Russian Circles, **April 15**; The Weepies, **April 21**; The Lillingtons, **April 25**; Nicole Atkins, **April 27**. [www.utphilly.com](http://www.utphilly.com). 1026 Spring Garden St., 215.232.2100. **Map 1, I2**

**WELLS FARGO CENTER**—The biggest names in music stop at this stadium arena and sports complex in South Philadelphia. Get there by car or take SEPTA's Broad Street subway line to AT&T Station. This month: Lorde, **April 2**; Pink **April 13**. [www.spectratix.com](http://www.spectratix.com). 3601 S. Broad St., 215.336.3600 215.336.3600. **Map 4, B4**

## Dance

**PENNSYLVANIA BALLET**—Established in 1963, this company is considered to be one of the premier ballet companies in the United States, bringing the best in classical performance to the Philadelphia stage. This month: "Grace & Grandeur," **April 5-8**. [www.paballet.org](http://www.paballet.org). Academy of Music, 240 South Broad Street, 215.893.1999. **Map 1, H6**

**PHILADANCO**—The Philadelphia Dance Company (Philadanco) is a non-profit organization that presents predominantly African-American traditions in dance while increasing dance appreciation in the area. This month: "Success Stories," **April 13-15**. [www.philadanco.org](http://www.philadanco.org). Kimmel Center for the Performing Arts. Broad and Spruce streets, 215.893.1999. **Map 1, H6**

## Gay & Lesbian Clubs

**KNOCK RESTAURANT AND BAR**—Known for its friendly scene and inspired cuisine, Knock draws a sophisticated gay clientele of all ages. A daily happy hour is served from 5 pm-7 pm. Daily 11 am-2 am. [www.knockphilly.com](http://www.knockphilly.com). 225 S. 12th St., 215.925.1166. **Map 1, I6**

**UBAR**—With its large oval bar and mirrored walls, this a Gayborhood institution regularly draws a lively crowd. Relax with a no-frills brew and some juke box tunes. Daily 11 am-2 am. [www.ubarphilly.com](http://www.ubarphilly.com). 1220 Locust St., 215.546.6660. **Map 1, I6**

## Gentlemen's Club

**DELIHAH'S**—"America's #1 Gentlemen's Club" features "The World's Most Beautiful Showgirls." Find a complimentary after-work buffet, happy-hour specials and free cover with hotel room key or game day ticket stub. Free parking. M-Sa 11:30 am-2 am, Su 1 pm-1 am. [www.delilahs.com](http://www.delilahs.com). 100 Spring Garden St., 215.625.2800. **Map 1, L2**

## Live Music Clubs

**THE CLEF CLUB OF JAZZ AND THE PERFORMING ARTS**—This four-story building, affectionately referred to as "The House That Jazz Built," was formed by a music union in the mid-20th century and has been the hangout of such famous members as John Coltrane, Nina Simone and Ella Fitzgerald. It has a large concert hall and boasts an elegant bar on the second floor, which over-

looks a stage and tables. [www.clefclubofjazz.org](http://www.clefclubofjazz.org). 738 S. Broad St., 215.893.9912. **Map 1, H7**

**JOHNNY BRENDA'S**—Catch locally and nationally renowned indie rock acts almost every night at this hipster hangout in the up-and-coming Fishtown neighborhood. The venue is upstairs from a tavern that features upscale pub grub. This month: Mirah, **April 4**; The Weather Station, **April 6**; Welles, **April 10**; Partner, **April 12**; U.S. Girls, **April 14**; Nap Eyes, **April 17**; Marie/Lepanto, **April 18**; The Cactus Blossoms, **April 19-20**; Hawktail, **April 23**; Wreckless Eric, **April 25**; Land of Talk, **April 27**; Lauren Ruth Ward, **April 29**. [www.johnnybrendas.com](http://www.johnnybrendas.com). 1201 N. Frankford Ave., 215.739.9684. **Map 1, L1**

**WORLD CAFE LIVE**—There's always something happening at this University City venue and restaurant, featuring local and national acts on two stages and frequent open mics and jam sessions. Ticket prices and show times vary. F from 11 am, Sa-Th from 5 pm. This month: Jen Hartschick and Nick Cassarino, **April 4**; Waker, **April 7**; Run River North, **April 10**; Arrested Development, **April 12**; Caitlyn Smith, **April 14**; The Suffers, **April 19**; Paula Cole, **April 20**; Herb Alpert and Lani Hall, **April 23**; Durand Jones & The Incantations, **April 26**. [www.phillyworldcafelive.com](http://www.phillyworldcafelive.com). 3025 Walnut St., 215.222.1400. **Map 1, E5**

## Sports

**ARENA FOOTBALL: SOUL HOME GAMES**—With multiple division, conference and world championships, the winningest Arena Football League team tackles rivals at Wells Fargo Center. [www.philadelphiasoul.com](http://www.philadelphiasoul.com). Wells Fargo Center, 3601 S. Broad St., 215.253.4900. **Map 4, B4**

**BASEBALL: PHILLIES HOME GAMES**—Catch the fightin' Phils at Citizens Bank Park, a ballpark that combines modern amenities with old-fashioned charm. Miami Marlins **April 5, 7-8**; Cincinnati Reds **April 9-11**; Pittsburgh Pirates **April 19-22**; Arizona Diamondbacks **April 24-26**; Atlanta Braves **April 27-29**. [www.phillies.com](http://www.phillies.com). Citizens Bank Park, One Citizens Bank Way, 215.463.1000. **Map 1, H8**

**HOCKEY: FLYERS HOME GAMES**—The Flyers' passionate attempts toward an NHL Championship provide theater on ice. Boston Bruins **April 1**; Carolina Hurricanes **April 5**; New York Rangers **April 7**. [flyers.nhl.com](http://flyers.nhl.com). Wells Fargo Center, 3601 S. Broad St., 800.298.4200.

## Theater

**KIMMEL CENTER FOR THE PERFORMING ARTS**—This elegant entertainment complex houses multiple stages in the hub of Philadelphia's Avenue of the Arts. This month: "School of Rock," **through April 1**; "On Your Feet," **April 10-15**; "The Sound of Music," **April 24-29**; "Just Call Me God: A Dictator's Final Speech Starring John Malkovich," **April 30**. [www.kimmelcenter.org](http://www.kimmelcenter.org). 300 S. Broad Street, 215.670.2300. **Map 1, H6**

**WALNUT STREET THEATRE**—America's oldest continuously operating theater has been bringing classics to life on stage since 1809. This month on the Mainstage: "Noises Off," **through April 29**. Independence Studio on 3: "Tell Me on a Sunday," **April 10-June 10**. WST for Kids: "The Musical Adventures of Flat Stanley Jr.," **through April 14**. [www.walnutstreettheatre.org](http://www.walnutstreettheatre.org). 825 Walnut St., 215.574.3550. **Map 1, J5**



DISCOVER THE EXCITEMENT OF  
ARENA FOOTBALL WITH PHILLY'S  
BACK-2-BACK CHAMPIONS!



TICKETS START AS  
LOW AS \$15

CHECK OUT THESE GREAT  
GAMES IN APRIL!

SATURDAY, APRIL 21ST AT 7PM VS.  
BALTIMORE BRIGADE  
(COME EARLY AND WATCH THE 2017  
CHAMPIONSHIP BANNER RAISING!)

SATURDAY, APRIL 28TH AT 7:30PM  
VS. WASHINGTON VALOR

FOR TICKETS:  
VISIT THE WELLS FARGO CENTER BOX  
OFFICE ON GAME DAYS OR  
FOR DISCOUNTED TICKETS VISIT  
[PHILADELPHIASOUL.COM/WHERE](http://PHILADELPHIASOUL.COM/WHERE)  
888-789-SOUL  
[TICKETS@PHILADELPHIASOUL.COM](mailto:TICKETS@PHILADELPHIASOUL.COM)

Here today.  
where tomorrow.

Before you travel,  
go to [wheretraveler.com](http://wheretraveler.com)  
and see where to shop, dine  
and play once you arrive.

[wheretraveler.com](http://wheretraveler.com)  
Info only locals know.

[wheretraveler.com](http://wheretraveler.com)

# Navigate



## Bucks County

Located 25 miles from Philadelphia, Bucks County is a picturesque countryside of Rockwellian towns full of lush vineyards, historic mansions, eclectic shops, charming covered bridges (pictured), blooming gardens and top dining destinations. Head to Doylestown for museums of American art, or climb aboard a 1925 steam locomotive and ride the rails along the New Hope and Ivyland Railroad.

## Tours

**BIG BUS COMPANY: PHILADELPHIA**—Hop on and off double-decker buses as much as you like during a one-, two- or three-day pass. Tickets can also be used with Philadelphia Trolley Works. Tours depart from the N.E. Corner of 5th and Market streets and stop at 27 attractions. One day: \$32, seniors \$29, children (ages 4-12) \$10, under 4 free. See website for full list of prices and tour offerings. Free hotel pickup in Center City and at airport (shuttle). [www.phillytour.com](http://www.phillytour.com). Tickets: 215.389.8687 or on the bus.

**PHILADELPHIA TROLLEY WORKS**—This trolley takes riders to 27 stops throughout the city. Hop on and off on a one-, two- or three-day pass. Tickets can also be used on the Big Bus Philadelphia. Trolleys depart frequently from the northeast corner of 5th and Market streets. One day: \$32, \$29 seniors, children (ages 4-12) \$10, under 4 free. Visit website for full list of prices and tour offerings. Free hotel pickup in Center City. [www.phillytour.com](http://www.phillytour.com). 215.389.8687. **Map 1, K5**

**PHILLY BREW TOURS**—Sip your way through the city with fellow beer lovers visiting the region's craft breweries while learning about the brewing process and the local beer scene. Tours may include Yards Brewing Co., Philadelphia Brewing Co., Dock Street Brewery, 2nd Story Brewing Co., Flying Fish Brewing Co., Lunacy Brewing, and Saint Benjamin Brewing Co. Check website for a list of daily options, both public and private. \$65-\$90. [www.phillybrewtours.com](http://www.phillybrewtours.com). 215.866.2337.

**TASTE OF PHILLY FOOD TOUR**—Learn the story behind Reading Terminal Market and Philly food favorites during this 90-minute, food-writer-led walking tour. Discover where Milton Hershey got the idea for Hershey Kisses and the proper way to order a cheesesteak. Reservations required. Tours depart W and Sa at 10 am. \$16.95, \$9.95 children (ages 7-11), under 7 free. [www.tasteofphillyfoodtour.com](http://www.tasteofphillyfoodtour.com). Reading Terminal Market Welcome Desk, 12th and Filbert streets Call 215.545.8007. **Map 1, I4**

**THE YO, PHILLY! ROCKY FILM TOUR**—Private parties looking for a good time spend three to four hours searching out attractions from the hit movie "Rocky" on this tour, led by "Rocky" himself. See Rocky's apartment, "Take you back" corner, Mickey's Gym, the Italian Market, and much more. \$350 (1 to 7 people). [www.theyrockyfilmtour.net](http://www.theyrockyfilmtour.net).

## Transportation

**LUCY BUS ROUTE**—This weekday service stops at key locations in the University City neighborhood, including 30th Street Station, University of Pennsylvania, University City Science Center, University of Pennsylvania Medical Center and Drexel University. \$2.25 base fare. Departs 30th Street Station every 12 to 35 minutes. M-F, Green and Gold Loop: 6:10 am-7 pm. Wheelchair accessible. [www.universitycity.org/lucy](http://www.universitycity.org/lucy). 215.580.7800.

There's a lot more going on this April. Visit us online: [wheretraveler.com](http://wheretraveler.com)

**THE PHILLY PHLASH DOWNTOWN LOOP**—A quick, convenient and affordable connection to popular attractions, the PHLASH takes riders to 22 stops every 5 minutes, weekends through April 29. \$2 single ride, \$5 all-day pass; free for children (ages 4 and under), seniors and SEPTA pass and key card holders. [www.ridephillyplash.com](http://www.ridephillyplash.com). 800.537.7676.

**SEPTA**—SEPTA (Southeastern Pennsylvania Transportation Authority) provides bus, train, trolley and subway service throughout Philadelphia and the surrounding suburbs. One-way subway or bus fare is \$2.25. Unlimited travel for one day on any SEPTA vehicle is available with the One Day Independence Pass for \$12 or the Family Independence Pass for \$29. [www.septa.org](http://www.septa.org). 215.580.7800.

## Visitor Information

**CITY HALL VISITOR CENTER**—Located in the true heart of Philadelphia, the City Hall Visitor Center lets visitors experience one of the city's most iconic buildings. Knowledgeable representatives offer essentials including maps and brochures. Tours of this architectural treasure are available, as well as souvenirs and itineraries. M-F 9 am-5 pm, and select Saturdays. [www.phlvisitorcenter.com/cityhall](http://www.phlvisitorcenter.com/cityhall). East Portal, Room 121, Broad and Market streets, 215.686.2840.

**POUNDING THE PAVEMENT** Thanks to city founder William Penn, the Center City district is laid out in a grid design, making the zone easy to get around and wonderfully walkable.





MAP 1 PHILADELPHIA DOWNTOWN WEST

PHILADELPHIA DOWNTOWN EAST

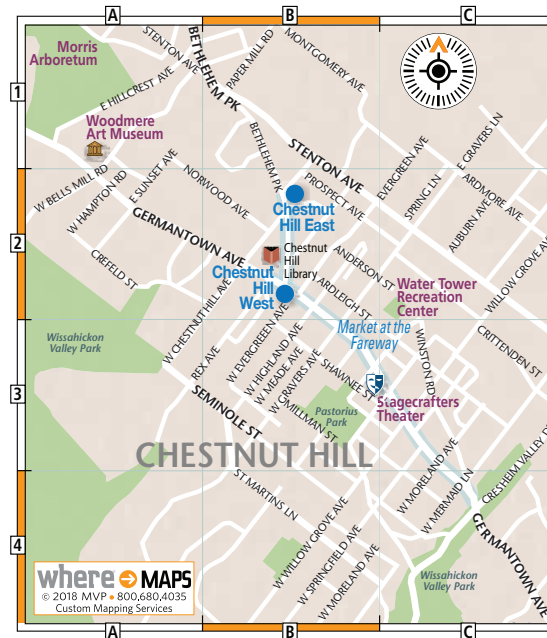




MAP 2 PHILADELPHIA HISTORIC AREA



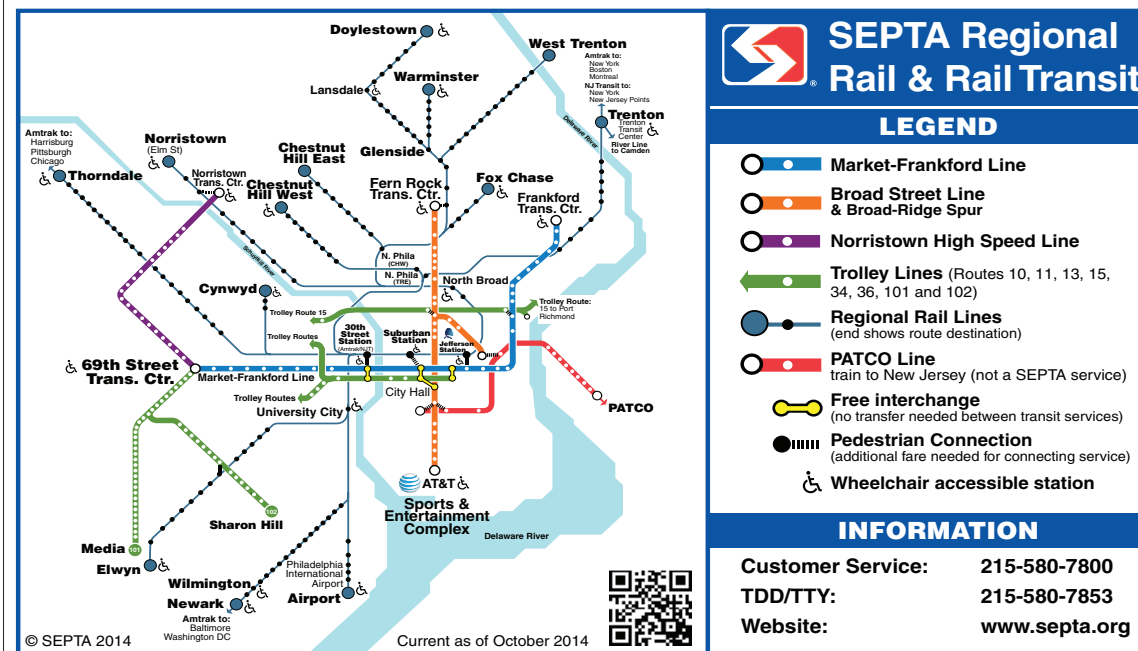
MAP 3 PHILADELPHIA CHESTNUT HILL



MAP 4 PHILADELPHIA METRO MAP



MAP 5 PHILADELPHIA SEPTA



# [WHERE INSIDE] Philadelphia Your Way

UNIQUE TRAVEL RECOMMENDATIONS, FIT TO MATCH YOUR PERSONAL STYLE.  
FIND THE CITY CURATED FOR YOU AT [WHERETRAVELER.COM/PHILADELPHIA](http://WHERETRAVELER.COM/PHILADELPHIA).



## Sports Fanatics

This year, Eagles fans certainly got something to celebrate with a historic Super Bowl win for the city. But, anyone who loves sports can find plenty to toast here. In Collingswood, New Jersey, **(1) DePace Sports Museum** offers a loving tribute to all genres with tons of artifacts, including the trunks Muhammad Ali and Joe Frazier wore during the 1971 "Fight of the Century." If Philly teams are your thing, however, head to **(2) Shibe Vintage Sports**, a local institution stocking a deep collection of clothing and gear recalling bygone years with old-school designs. **(3) Fox & Hound**, one of the city's liveliest sports bars, appeals to both game watchers and non-watchers. Settle in during any local and major sporting event for specials on the tavern's robust beer list and a formidable menu of bar grub favorites.

## Outdoor Enthusiast

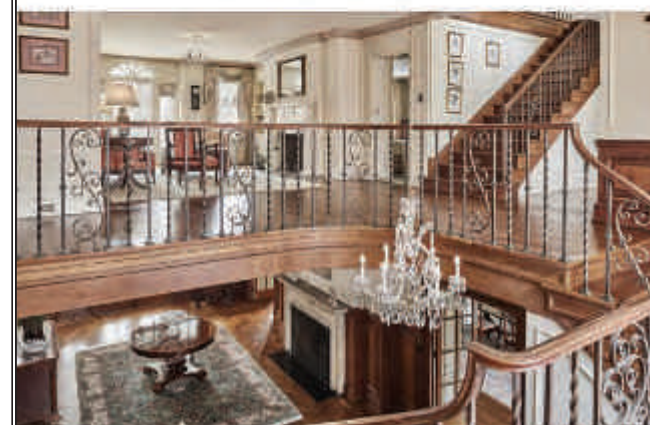
Rittenhouse Row is home to some of Philly's most luxurious shopping destinations, but right in the center is a green refuge known as **(1) Rittenhouse Square Park**. Take a break from shopping and enjoy a tranquil picnic on the well-manicured grass after picking up lunch from nearby Di Bruno Brothers. Sitting pretty in the Chestnut Hill neighborhood of Philadelphia, **(2) Morris Arboretum** is a public garden and historic site wrapped into one. In addition to the 92 acres of flowers, trees and plants, the arboretum also offers classes, tours and lectures for plant lovers. Snap the perfect picture of the Ben Franklin Bridge from **(3) Race Street Pier**, a waterfront spot at the banks of the city. On any given day, you'll find runners, sunbathers, passing duck boats and an overall feeling of calmness.

## With the Kids

Nothing says "time for a break" quite like ice cream. **(1) The Franklin Fountain** is an old-fashioned soda parlor that fits well with Philly's history-focused tours. We suggest ordering the Mt. Vesuvius mixed with a brownie, hot fudge, malt powder and whipped cream (yum!). When you get to the **(2) Adventure Aquarium**, head straight for the Shark Realm, an exhibition space offering 360-degree views of the ocean's most feared creature. Remember your visit long after you leave by "adopting" a marine animal, which comes with a certificate, a photo and a plush toy. **(3) One Liberty Observation Deck** offers one of the best ways to take in the city, especially if you're short on time. The touch-screen boards enhance the experience, but the views truly take your breath away.

(FROM TOP TO BOTTOM, LEFT TO RIGHT) COURTESY DEPACE SPORTS MUSEUM; COURTESY SHIBE VINTAGE SPORTS; COURTESY FOX & HOUND; ©M. EDLOW/VISIT PHILLY; ©R. KENNEDY/VISIT PHILLY; COURTESY FRANKLIN FOUNTAIN; ©R. KENNEDY/VISIT PHILLY; ©J. FUSCO/VISIT PHILLY

Live Smart. Live Iconic.  
Live Philadelphia.



Philadelphia - where modern luxury meets historic elegance. From our exquisitely preserved 18th century brick row-houses, to the luxury amenities offered in the newest modern high-rises, discover what it's like to LIVE in Philadelphia.

Kurfiss  
Sotheby's  
INTERNATIONAL REALTY

JASON KRAVITZ

c. 267.324.4141 | o. 215.735.2225  
RealtorJK@gmail.com | www.RealtorJK.com  
1631 Locust Street Suite 300, Philadelphia, PA 19103

Each Office is Independently Owned & Operated.

Top Real Estate Agent at Kurfiss Sotheby's International Realty Philadelphia

