



Kurfiss

**Sotheby's**  
INTERNATIONAL REALTY

Jason Kravitz is Philadelphia's Go-To Real Estate Agent



Jason Kravitz specializes in residential property sales and leases in and around Philadelphia, PA. For the last 13 years, he has overseen and successfully closed numerous transactions. Jason represents buyers & sellers in all price ranges, and truly believes, that regardless of the price, his clients' home are their most valuable assets and deserves to be treated as such. Through real estate, Jason has been able to combine his passion for people, architecture, and interior design into one medium. Sotheby's International Realty defines luxury as living the lifestyle you want and deserve. Real estate is about personal expression and experience, and assisting you in that process is what Jason can do best. As a top real agent at Kurfiss Sotheby's International Realty in Philadelphia, let him show you what it's like to live in and around this iconic city.



JASON KRAVITZ

c. 267.324.4141 | o.215.735.2225 | [www.RealtorJK.com](http://www.RealtorJK.com) | [RealtorJK@Gmail.com](mailto:RealtorJK@Gmail.com)  
Kurfiss Sotheby's International Realty | 1631 Locust Street Suite 300, Philadelphia, PA 19103

Each office is independently owned & operated

# where

GUIDE TO PHILADELPHIA

## DISCOVER

GROOVIN' TO  
LOCAL MUSIC

## SHOP

HIP SPOTS  
FOR THE GUYS

## EXPLORE

THE CITY  
CURATED FOR  
3 TRAVEL  
STYLES

PROMOTION

OPERA DIVAS  
RETURN TO  
PHILADELPHIA  
FOR FESTIVAL 018,  
SEPT. 20-30



SEPTEMBER 2018

[wheretraveler.com](http://wheretraveler.com)





# LAGOS

MY LAGOS MY WAY

CAVIAR COLLECTIONS  
RITTENHOUSE SQUARE | 215.567.0770 | LAGOS.COM

CONTENTS

SEE MORE OF PHILADELPHIA AT [WHERETRAVELER.COM](http://WHERETRAVELER.COM)

### the plan

#### 02 Editor's Itinerary

The essential things to see and do in Philadelphia, plus a 90-minute visit to a family-friendly riverside attraction.

#### 04 Where Calendar Hot Dates This Month

Top things to do in September.



#### 32 Philadelphia Your Way

The city curated for you, whether you're LGBTQ, a sports lover, just one of the gals or all three.



#### COVER PROMOTION

Opera star Brenda Rae takes on the title role in "Lucia di Lammermoor" at Opera Philadelphia's Festival O18. PHOTO BY KELLY & MASSA

CONNECT WITH US



READ US ON MAGZTER

### the guide

#### 10 SHOPPING

Top spots to shop, from department stores to independent boutiques

#### 15 GALLERIES & ANTIQUES

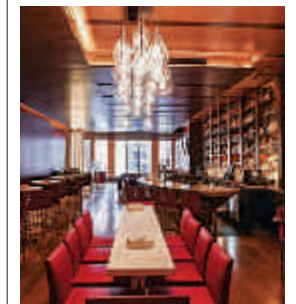
Paintings, photography, sculptures, antiques, plus exhibitions to see now

#### 18 DINING

Tasty Philly restaurants, from fine dining to fast casual, in more than a dozen neighborhoods

#### 23 ENTERTAINMENT

Fun bars, hip lounges, world-class theater and many more ways to enjoy the arts



Philly Fashion Week



World Cafe Live

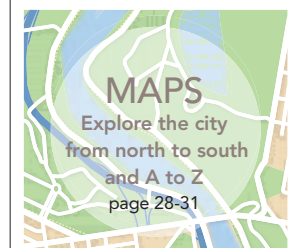
### where now

#### 6 We Got the Beat

Philadelphia's historic music scene hits high notes with a new generation of soundmakers determined to make waves. BY AMY GORDON

#### 8 A Front-Row to Philly Style

Our top picks for the guys and inspiration from the runway for all.



(CLOCKWISE FROM TOP) ©KAUSHIK SARKAR-PIXIENS PHOTOGRAPHY; COURTESY ASHTON CIGAR BAR; COURTESY WORLD CAFE LIVE; COURTESY FRINGEARTS



NEWS TO TRAVEL BY

# Essential Philadelphia



September officially kicks off my favorite season, fall. This time of year, the city bustles with renewed energy as people get back to business. But it's not all about the nine-to-five. Autumn brings plenty of fun things to do, too, and if you're anything like me, that means music. Philly's musical roots run deep; just turn to page 6 to find out how this city grooves. This is also the best time to update wardrobes—and not just for the ladies. Gents looking for fresh duds find what they need on page 8. If your schedule allows for only one fun thing to do, here's where to go.

## 90 MINUTES IN: Independence Seaport Museum

This site founded by J. Welles Henderson has been offering an insightful look at the region's waterways since 1960, when it was known as the Philadelphia Maritime Museum. In 1995, the museum took its current name and moved to its current location at Penn's Landing on the Delaware Waterfront.

Start inside at the exhibition "Patriots and Pirates," which tells the story of the U.S. Navy (and its encounters with buccaners). From here, check out key artifacts, like the bridge from the U.S.S. Lawrence, which was built in Camden, New Jersey, just across the river. For something a little more hands-on, climb aboard Diligence, a 102-foot full-size model of the 1797 original schooner, and glimpse 18th-century life at sea.

Outside, you'll find the Cruiser Olympia and Submarine Becuna (pictured), National Historic Landmark



ships that have been berthed at the museum since 1996.

Launched in 1892, the Cruiser Olympia is the oldest surviving American naval warship from its era and the oldest floating steel warship. It served as Commodore Dewey's flagship when he won the Battle of Manila Bay in the Spanish-American War.

In her heyday, the Subma-

rine Becuna (aka "Becky"), a WWII and Cold War-era submersible, patrolled the Pacific and Atlantic oceans, sinking 3.5 Japanese merchant ships and "eavesdropping" on Soviet submarines.

*Correction: The Family Fun Guide incorrectly lists information for the museum. Admission prices are \$17; seniors/students/military \$12; children under 3 free. Historic ships are open Th-Sa, 10 am-8 pm through Labor Day.*

**JOLLY'S**  
DUELING PIANO BAR

This is not your grandfather's piano bar. It's a rockin', rollin', sing-a-long, drink-a-long helluva good time. So come on down to Jolly's and eat, drink, and (dare we say it?) be jolly!

**215.238.1333**  
jollysduelingpianobar.com

**110 Chestnut Street**  
Philadelphia, PA 19106

(FROM TOP) ©ANNE KIM-DANNIBALE; ©M. FISCHETTI/VISIT PHILADELPHIA®

YOUR TRAVELING COMPANION SINCE 1936®

**where**  
PHILADELPHIA

Member of the Morris Media Network

**MVP | EDITORIAL & DESIGN**  
GROUP EDITOR **Anne Kim-Dannibale**  
EDITORIAL ASSISTANT **Alexander Oliveira**  
ART DIRECTOR **Dusty Martin**  
CONTRIBUTING WRITER **Amy Gordon**

**MVP | CIRCULATION**  
CIRCULATION AND COMMUNICATIONS MANAGER  
**Zach Santo**

**ADVERTISING**  
JAMES G. ELLIOTT CO., INC.  
EXECUTIVE DIRECTOR **Pat O'Donnell**  
ASSOCIATE PUBLISHER **Brenda Mendte**, 610.864.0722  
b.mendte@jgeco.com  
ACCOUNT MANAGER **Terri Plaut**, 215.582.0624  
t.plaut@jgeco.com

**MORRIS VISITOR PUBLICATIONS**  
**MVP | EXECUTIVE**  
PRESIDENT **Donna W. Kessler**  
CHIEF FINANCIAL OFFICER **Dennis Kelly**  
VICE PRESIDENT, OPERATIONS **Angela E. Allen**  
HEAD OF DIGITAL **Richard H. Brashear II**  
DIRECTOR OF CIRCULATION **Scott Ferguson**

**MVP | CREATIVE**  
CHIEF CREATIVE OFFICER **Haines Wilkerson**  
EDITORIAL DIRECTOR **Margaret Martin**  
DIRECTOR OF PHOTOGRAPHY **Isaac Arjonilla**  
CREATIVE COORDINATOR **Beverly Mandelblatt**

**MVP | PUBLICATION SERVICES**  
PUBLICATION SERVICES DIRECTOR **Karen Fralick**  
PUBLICATION SERVICES MANAGER **Cher Wheeler**  
DIGITAL IMAGING **Erik Lewis**

**MVP | MANUFACTURING & TECHNOLOGY**  
DIRECTOR OF MANUFACTURING **Donald Horton**

E-mails for all of the above except contributors:  
firstname.lastname@morris.com

**MVP**  
Morris Visitor Publications

**MVP | PHILADELPHIA**  
1455 Pennsylvania Ave. NW, Suite 457,  
Washington, DC 20004, 202.349.9858

**MORRIS COMMUNICATIONS**  
CHAIRMAN **William S. Morris III**  
PRESIDENT & CEO **William S. Morris IV**

**wheretraveler.com**  
Where® magazine is produced by Morris Visitor Publications (MVP), a division of Morris Communications Co., LLC, 725 Broad St., September, GA 30901, morrismediametwork.com. Where magazine and the where® logo are registered trademarks of Morris Visitor Publications. Where makes every effort to ensure the accuracy of the information it publishes, but cannot be held responsible for any consequences arising from errors or omissions. All rights reserved. Reproduction in whole or in part strictly prohibited.



# PHILLY'S BEER GARDEN IS YOUR HOME GAME HQ

## CATCH EPIC FOOTBALL ACTION AT FISHTOWN HOPS!

Enjoy Game Day Specials On The Waterfront!

**97.5 THE FANATIC** Don't Miss Live Broadcasts with the 97.5 Fanatic.

**FISHTOWNHOPS.COM**

FREE SELF-PARKING  
N. DELAWARE AVE.  
1 MILE NORTH OF THE  
BEN FRANKLIN BRIDGE

POWERED BY  
**SUGAR HOUSE**  
CASINO

Persons under 21 are not permitted inside the casino.  
GAMBLING PROBLEM? CALL 1-800-GAMBLER.

## where® in the world

Where is an international network of magazines first published in 1936 and distributed in over 4,000 leading hotels in more than 50 places around the world. Look for us when you visit any of the following cities, or plan ahead for your next trip by visiting us online at [wheretraveler.com](http://wheretraveler.com).

**UNITED STATES** Alaska, Atlanta, Baltimore, Boston, Charleston, Charlotte, Chicago, Dallas, Indianapolis, Jacksonville/St. Septemberine/Amelia Island, Las Vegas, Los Angeles, Maui, Miami, Minneapolis/St. Paul, New Orleans, New York, Oahu, Orange County (CA), Orlando, Philadelphia, Phoenix/Scottsdale, San Diego, San Francisco, Seattle, St. Louis, Tampa, Tucson, Washington, D.C. **ASIA** Hong Kong, Macau, Singapore **AUSTRALIA** Brisbane, Gold Coast, Melbourne, Sydney **CANADA** Calgary, Canadian Rockies, Edmonton, Halifax, Muskoka/Parry Sound, Ottawa, Toronto, Vancouver, Victoria, Whistler, Winnipeg **EUROPE** Berlin, Budapest, Istanbul, London, Madrid, Milan, Moscow, Paris, Rome, St. Petersburg





# HOT DATES

## SEPT. 1-2: Made in America Festival

Since 2012, this multi-artist concert extravaganza has been a Labor Day tradition in Philadelphia. Founded and curated by rap megastar Jay-Z, Made in America brings some of the biggest musicians in a wide spectrum of genres to the Benjamin Franklin Parkway and thousands of adoring fans. This year's lineup is just as stellar with headliners including Nicki Minaj, Janelle Monae, Post Malone, Diplo and Philly's own Meek Mill plus under-the-radar discoveries. *Ticket prices vary. Check website for full schedule. Benjamin Franklin Parkway, [www.madeinamericafest.com](http://www.madeinamericafest.com)*



Demo Day



Fringe Festival

## 6 Great Things Not to Be Missed

### 1 FARM FOR THE CITY > THROUGH SEPT. 29

"Farm Hosts" help get your garden to grow. Free. M-F 8 am-8 pm, Sa-Su 10 am-6 pm. 1401 John F. Kennedy Blvd., [phonline.org](http://phonline.org)

### 2 BMW CHAMPIONSHIP GOLF > SEPT. 4-9

PGA Tour players vie for the FedExCup. \$30-\$45. Aronimink Golf Club, 3600 St. Davids Road, Newtown Square, Pa., 610.356.8000, [bmwchampionshipusa.com](http://bmwchampionshipusa.com)

### 3 FRINGE FESTIVAL > SEPT. 6-23

The city becomes a stage for avant garde performances. Check website for tickets/schedule. 215.413.1318, [fringearts.com](http://fringearts.com)

### 4 DEMO DAY > SEPT. 15

A mint condition Allard J2, Alfa 2900, MG goes out for a spin. \$8-\$12. Noon. Simeone Foundation Automotive Museum, 6825-31 Norwiche Drive, 215.365.7233, [simeonemuseum.org](http://simeonemuseum.org)

### 5 HISTORY AFTER HOURS > SEPT. 18

Today's fashionistas learn all about their Revolutionary-era predecessors, try on a few things and sip happy hour cocktails. \$10. 5-8 pm. Museum of the American Revolution, 101 S. Third St., 215.253.6731, [amrevmuseum.org](http://amrevmuseum.org)

### 6 KOREAN HARVEST FESTIVAL > SEPT. 29

Cultural shows, food and tours of native plants transport visitors to Korea. \$10-\$19. 11 am-3 pm. Morris Arboretum, 100 E. Northwestern Ave., 215.247.5777, [morrisarboretum.org](http://morrisarboretum.org)

## TOP SPOTS

This month, the city's museums display exhibitions that paint the town and stir the soul.

### THROUGH SEPT. 3

#### THE BARNES FOUNDATION

Few may know that acclaimed film auteur Jean Renoir is the son of famous painter Pierre-August Renoir, of the iconic "Luncheon of the Boating Party." The exhibit "Renoir: Father and Son/Painting and Cinema" delves into the artist's influence on his offspring and his career. \$5-\$30. 2025 Benjamin Franklin Parkway, 215.278.7000, [www.barnesfoundation.org](http://www.barnesfoundation.org)

### THROUGH SEPT. 7

#### PENNSYLVANIA ACADEMY OF THE FINE ARTS

"Far From Home: Low-Residency MFA Exhibition" lets visitors discover emerging talent in graduating students displaying works, two-and-a-half years in the making. \$8-\$15. 118-128 N. Broad St., 215.972.7600, [www.pafa.org](http://www.pafa.org)

### THROUGH OCT. 14

#### PHILADELPHIA MUSEUM OF ART

In "Face to Face: Portraits of Artists" famous photographers including Richard Avedon, Man Ray and Dorothy Norman aim their camera lens on well-known creatives like Ella Fitzgerald, Georgia O'Keeffe, Jacob Lawrence and Frieda Kahlo. The result? New perspectives on these influential artists in rarely seen environments. \$14-\$20. 2600 Benjamin Franklin Parkway, 215.763.8100, [www.philamuseum.org](http://www.philamuseum.org)

(FROM TOP) ©KEVIN MAZUR/GETTY IMAGES FOR ANHEUSER BUSCH; ©JOSEPH CHIACCO/WIKIMEDIA COMMONS; COURTESY FRINGEARTS



## EASTERN STATE PENITENTIARY

## Explore America's Most Historic Prison

A haunting world of crumbling cellblocks and empty guard towers

Tours include the cellblocks, Al Capone's Cell, artist installations, and an audio tour narrated by actor Steve Buscemi.

Open Every Day 10 am to 5 pm • (215) 236-3300 • [www.EasternState.org](http://www.EasternState.org)  
2027 Fairmount Avenue, Philadelphia, PA • Just five blocks from the Philadelphia Museum of Art



# Philadelphia where now

The savvy traveler's guide to the City of Brotherly Love

## We Got the Beat

Philadelphia's historically hot music scene hits high notes with a new generation of soundmakers destined for stardom.  
By Amy Gordon

Johnny Brenda's

NIGHTLIFE

(FROM TOP) COURTESY CHILL MOODY; COURTESY JUDAH KIM AND THE ASSASSINS; (FACING PAGE) G. WIDMAN/VISIT PHILADELPHIA™

Chubby Checker. Hall and Oates. Will Smith. The Roots. Philadelphia has been churning out top musicians for decades. A stroll down the Philadelphia Music Alliance's Walk of Fame on the Avenue of the Arts displays the many melodic influencers who started here. Today, the local music scene, much like the city itself, is in the midst of a renaissance.

"It's a thing now for artists to say 'I'm from Philly,'" says lyricist and performer Chill Moody. "The talent has always been here and always will be, but there's a great sense of pride now." In between playing live shows and recording new tracks, Moody, who was named Best Rapper by Philadelphia Magazine, hosts Hope & Fury, a free live music and conversation series at La Colombe in Fishtown. It's his way of highlighting local artists and fostering collaboration.

That strong sense of community is part of what makes the music here scene so unique. Radio stations like WXPN and WMMR devote hours to promoting home-grown talent, and many venues host open mic nights to highlight locals in just about every genre and style. At Manayunk's The Grape Room, the weekly lineup of performers range from funk to jazz fusion to rock. "We're often introduced to a lot of talent through those nights, and then we book them for the future," says Kevin McCall, the venue's live event promoter.

Philly's diverse scene helped nurture some of today's hottest hit-makers, from headline-garnering rapper Meek Mill to indie rockers The War on Drugs. While large-scale venues like The Fillmore and SugarHouse Casino draw internationally recognized talent, smaller spots like MilkBoy, World Café Live and Time Restaurant, Whiskey Bar & Taproom open the door for on-the-rise performers. "As far as venues are concerned, Philly is a fairly welcoming place for new artists," says Judah Kim, songwriter for Judah Kim and the Assassins. "Places like Johnny Brenda's and Boot & Saddle are looking for substance. They want a certain level of talent and a certain sound and vibe. It challenges us to do better."

Young musicians have long been drawn to the city for its outstanding arts education programs at colleges and universities like The Curtis Institute of Music, Chestnut Hill College and University of the Arts. But talent and training are only pieces of the overall puzzle to success in the music industry. In the past, limited options in Philly for managers, publishers, producers and technicians have pushed aspiring stars to move to New York and Nashville. Times are changing, and support for a sustainable local music industry is increasing. "Whether it's starting a small management company, in-house production or publishing, there are good groups of people helping to build that infrastructure," says Jason Berger, entertainment lawyer and partner in the record label nicethingsMUSIC. "Those are the businesses that support the music ecosystem here."

An affordable city compared with east coast hubs like Boston, New York and Washington, D.C., Philly has seen an influx of entrepreneurs in industries of all kinds, and music is no exception. "Philly



Chill Moody



Judah Kim and the Assassins

"It's a thing now for artists to say 'I'm from Philly.' The talent has always been here ... but there's a great sense of pride now"

has a lot of neighborhoods that 10 to 15 years ago were run down, but artists, musicians and tech people have moved in and made them more vibrant," says Sean Timmons, cohost of WPPN's CRAIC Radio show and talent buyer at Mole Street, a local experiential and digital marketing agency. "When you've got a buzz, you attract more of it. People want to be where the action is, and they can go far while using Philly as a base."

As Philly continues to cement itself as a player in today's music industry, residents and visitors alike reap the benefits in talent cultivation, economic development and, of course, stellar music. "Right now in Philly is a vibrant time for music," says Timmons. "There are lots of good bands and good places to see them. It's better than it ever was."



STYLE WATCH

## A Front Row to Philly Style



Philly Fashion Week

### PHILLY FASHION WEEK

The City of Brotherly Love puts its love for fashion on display as the start of fall brings new cool-weather looks in stores all around town and, yes, even on local runways. From Sept. 24 to Sept. 29, Philly Fashion Week has models strutting down the catwalk, showcasing the latest trends from international and homegrown designers. Expect hot parties and chic events all week, but save your most stylish duds for sitting in the front row. As always, spectators can expect impressive talent like Philly's own Mickey Freeman, whose Freeman by Mickey line bends gender norms to create edgy menswear looks that are somehow familiar but always surprising. Designs for children, accessories, and of course, womenswear round out the offerings. For the full schedule and tickets, visit [www.phillyfashionweek.org](http://www.phillyfashionweek.org).

## Duds for the Dudes

Whether your look skews Cary Grant or Chase Utley, gents have no fear. Philadelphia's menswear shopping scene has you covered. Here, a few of our top picks for getting your fall style on.

- **Boyd's** may have started in 1938 with men's dress shirts, but it has since expanded to include women's wear, too. However, this family-run spot is still a guy's best bet for high-end formalwear, casual attire and accessories. It's also a must-stop for footwear, with an entire floor dedicated to shoes. 1818 Chestnut St., 215.564.9000

- Founded by master garment fitter Jay Amin and Eagles playmaker Malcolm Jenkins, haberdashery **Damari Savile** draws star athletes like Carson Wentz and Zach Ertz. Inside, find ready-to-wear suits and made-to-measure pieces that can be personalized in a dizzying array of ways. 709 Walnut St., 267.218.5760

- At **Distante**, a well-edited collection of duds appeals to any stylish shopper. But if that one off-the-rack item eludes, design experts go into action, helping customers create custom suits, sport coats and accessories, all made from the store's factory in Naples, Italy. Now that's service! 1510 Sansom St., 215.545.2850

- Old World-infused **Goorin Brothers** stocks well-crafted flat caps, bowlers and even pork pies in a boutique setting that feels like you've gone back in time to 1800s London. 1427 Walnut St., 215.665.1895



Damari Savile



Suitsupply

- **Metro Mens Clothing** carries affordable casual looks from brands including Ben Sherman, and Scotch & Soda. Those planning to do some real retail damage can fuel up on complimentary beverages, including beer and cocktails. 1600 E. Passyunk Ave., 267.324.5172

- Trendsetters looking for playful accents find just the thing at **Shibe Vintage Sports**. Founded in 2013 by sports fans, the shop specializes in vintage-style T-shirts (sports themed, naturally) and a few highlighting the designs of local artists. 137 S. 13th St., 215.566.2511

- A favorite with style bloggers, **Suitsupply** stocks suits made with detailed construction from Italian fabrics. Accessories, including a wide selection of colorful ties and pocket squares, are also a must. 1601 Locust St., 215.383.1500

(CLOCKWISE FROM LEFT) ©KAUSHIK SARKAR/PIXILENS PHOTOGRAPHY; COURTESY SUITSUPPLY; COURTESY DAMARI SAVILE

# WIN A TRIP TO SEDONA, AZ



Located in Northern Arizona, just a two-hour drive from Phoenix, Sedona is a serene destination known worldwide for its red-rock buttes. There's plenty to see and do, from hiking to visiting art galleries to dining at award-winning eateries. This package includes:

- Domestic roundtrip airfare for two
- Two-night stay in an Almeria Room at Sedona Rouge Hotel & Spa along with daily breakfast for two and a \$100 resort credit for spa or dining
- \$50 gift card to Pump House Station for Breakfast or Lunch
- \$100 gift card to Sound Bites Grill for Dinner



ENTER DAILY THROUGH SEPTEMBER 30TH, 2018 AT  
[WHERETRAVELER.COM/CONTEST](http://WHERETRAVELER.COM/CONTEST)

ARIZONA  
THE GRAND CANYON STATE

wheretraveler.com



# the where guide

## Shopping | September



### Contessa's French Linens

This charming stand located inside the historic Reading Terminal Market stocks lovely tablecloths and tea towels from Provence, Brittany and other French regions, plus one-of-a-kind aprons, jewelry and rosemary baskets. [www.contessafrenchlinens.com](http://www.contessafrenchlinens.com). 51 N. 12th St., 610.306.4507. **Map 1, I4**



### Loop

Crafty hobbyists have a gold mine in this boutique. Here, find colorful natural fibers and hand-painted and luxury yarns for knitting and crocheting. The shop also carries a full range of patterns, needles and notions and offers classes for all skill levels. [www.loopyarn.com](http://www.loopyarn.com). 1914 South St., 215.893.9939. **Map 1, G7**



### Steel Pony

Environmental fashionistas shouldn't miss Joanne Litz and Dennis Wolk's shop. Here, eco-friendly boho looks and accessories are hand-dyed and sewn on the spot. Many items are one-of-a-kind and all are made in Philly with sustainable, locally sourced materials. [www.steelpony.com](http://www.steelpony.com). 758 S. Fourth St., 215.467.6065. **Map 1, K7**

### Apparel-Men

**COMMONWEALTH PROPER**—Expert style consultants work with individuals to create not only custom suits, but also shirts and even casual pieces designed to fit like a glove. By appt. only M-F 10 am-6 pm, Sa-Su 10 am-4 pm. [www.commonwealthproper.com](http://www.commonwealthproper.com). 1839 Chestnut St., second floor, 267.319.1741. **Map 1, G5**

**DISTANTE**—Since 1983, this boutique has been offering the latest in business attire and upscale looks, plus custom outfits made in Naples, Italy. By appt. only. Call to reserve. [www.distanteclothing.com](http://www.distanteclothing.com). 1510 Sansom St., 215.545.2850. **Map 1, H5**

**HENRY A. DAVIDSEN**—This tailor and custom clothier located one block from Rittenhouse Square also offers image consulting and ready-to-wear selections, including cufflinks, pocket squares and rounds, ties and more. By appointment only. [www.henrydavidson.com](http://www.henrydavidson.com). 1701 Spruce St., 215.310.0219. **Map 1, G6**

**P'S & Q'S**—Scope out the hand-picked, premium items at this family-owned and operated menswear shop, which carries a large inventory of casual and work-ready looks by in-demand brands including Patagonia, Norse Projects, Kikkerland

and Herschel Supply Co. M-Sa noon-7 pm, Su noon-6 pm. [www.psandqs.com](http://www.psandqs.com). 820 South St., 215.592.0888. **Map 1, I7**

### Apparel-Men & Women

**323 ARCH STREET FASHION COLLECTIVE**—This "work/shop" concept is run by designers who create items in house. Shoppers browse a collection of locally made women's clothing, accessories and jewelry, all within view of the studio. Tu-Sa noon-5 pm. [www.323arch.com](http://www.323arch.com). 323 Arch St., 215.546.5975. **Map 2, D2**

**BOYDS PHILADELPHIA**—Boyd's is one of the country's largest men's stores and the city's largest designer women's store, showcasing the likes of T By Alexander Wang, Gucci Fragrance, Pashma, Manolo Blahnik and Zac Zac Posen. Amenities include free custom alterations and free valet parking. M-Sa 9:30 am-6 pm, W 9:30 am-8 pm. [www.boydsphila.com](http://www.boydsphila.com). 1818 Chestnut St., 215.564.9000. **Map 1, G5**

**CHARLIE'S JEANS**—Owner Sebastian McCall's "Best of Philly 2011" (Philadelphia Magazine) shop is stocked with sought-after lines of designer denim. M-W 11 am-7 pm, Th-Sa till 8 pm,

Su 11 am-6 pm. [www.charliesjeans.net](http://www.charliesjeans.net). 233 Market St., 215.923.9681. **Map 1, K5**

**HATS IN THE BELFRY**—This local chain offers a large selection of men's and women's dress and casual toppers from brands including Stetson, Giovannio and styles from the hat company's own line. M-Sa 10 am-7 pm, W 10 am-8 pm, Su 11 am-6 pm. [www.hatsinthebelfry.com](http://www.hatsinthebelfry.com). 1824 Chestnut St., 215.922.0303. **Map 1, G5**

**PLATINUM**—Since 1999, this one-stop shop has been offering high-quality name-brand clothing from labels like 7 For All Mankind, Diesel, Lacoste, Scotch & Soda and Hugo Boss. Su-M 11:30 am-8 pm, Tu-Th 11:30 am-9 pm, F-Sa 11:30-10 pm. [www.shopatplatinum.com](http://www.shopatplatinum.com). 526 South St., 215.599.7528. **Map 1, J7**

**SUGARCUBE**—Locally owned, beautifully spacious and always inviting, Sugarcube is known for inspired fashion for men and women by independent designers and vintage styles. You might find such labels as A.P.C., Dunderdon, Frenzii, Kim Schalk, Steven Alan, Pendleton and True Grit. M 11 am-7 pm, Tu-Sa noon-7 pm, Su noon-5 pm. [www.sugarcube.us](http://www.sugarcube.us). 124 N. Third St., 215.238.0825. **Map 1, K4**

(FROM LEFT) ©KELSEY HOFFMAN; COURTESY LOOP; ©KELSEY HOFFMAN

### Apparel-Women

**ELLELAURI**—Located in the heart of the fashion-forward Rittenhouse Square neighborhood, this chic women's clothing brand is known for offering modern looks in elegant silhouettes and a sophisticated color palette at affordable prices. M-Sa 10 am-7 pm, Su noon-5 pm. [www.ellelauri.com](http://www.ellelauri.com). 114 S. 19th St., 267.457.5939. **Map 1, G5**

**JOAN SHEPP**—With more than 40 years in the biz, Shepp purveys women's designer apparel and accessories from top (but harder-to-find) European and American brands, including Dries van Noten, Rick Owens and Yohji Yamamoto. M-Tu, Th-Sa 10 am-6 pm, W 10 am-8 pm, Su noon-5 pm. [www.joanshepp.com](http://www.joanshepp.com). 1811 Chestnut St., 215.735.2666. **Map 1, H5**

**LOU LOU BOUTIQUE**—This small chain known for offering a selection of stylish women's accessories in a boutique setting is new to the Midtown Village neighborhood. In addition to three signature lines, shoppers can find designer-inspired jewelry, handbags, scarves, hats and sunglasses, plus a wide range of gift items. Since prices are affordable, a few items snagged here won't break the bank. M-Th 11 am-8 pm, F-Sa 10 am-9 pm, Su 11 am-6 pm. [www.loulouboutiques.com](http://www.loulouboutiques.com). 143 S. 13th St., 267.538.1267.

**SMACK PARLOUR**—This Old City boutique is run by friends/fashion designers Abby Kessler and Katie Loftus, who share a style sensibility they describe as "vintage-inspired, girly, fun and flirty." Hip gals head to this candy-pink store for fabulous tops, dresses, jewelry, handbags and shoes sure to look cute by day or night. Open M-Th 11 am-7 pm, F-Sa 11 am-8 pm, Su noon-6 pm. [www.smackparlour.com](http://www.smackparlour.com). 219 Market St., 215.625.4551. **Map 1, K5**

**SOPHY CURSON**—This salon-like spot carries a well-curated collection of gowns, day-into-evening looks, jewelry and accessories by Blumarine, Edward Achour and Tom and Linda Platt. M-F 9:30 am-5:30 pm, Sa 9:30 am-5 pm. [www.sophycurson.com](http://www.sophycurson.com). 19th and Sansom streets, 215.567.4662. **Map 1, G5**

**VAGABOND BOUTIQUE**—Located in Old City, this boutique and yarn shop highlights hand-knit sweaters, jumpsuits and crop tops with a bohemian vibe, plus a chic assortment of accessories. M-Sa 11 am-7 pm, Su till 5 pm. [www.vagabondboutique.com](http://www.vagabondboutique.com). 37 N. Third St., 267.671.0737. **Map 1, K4**

### Bath & Beauty

**BLU MERCURY**—This East Coast company carries high-end cosmetics, skincare, haircare and fragrances with wise counsel by staff in a pressure-free environment. The brand's Tropicana location in Atlantic City has a full spa offering treatments like crystal facials, aromatherapy massages, detoxifying sea salt scrubs and more. M-Sa 10 am-7 pm, Su 11-6 pm. Spa Hours: M-Sa 10 am-7 pm, Su 11-6 pm. [www.blumercury.com](http://www.blumercury.com). 1707 Walnut St., 215.569.3100. **Map 1, G5**

**PALO SANTO WELLNESS BOUTIQUE**—Named for the Spanish terms for "holy wood," this modern apothecary offers a sanctuary for the harried with herbs, tinctures and all manner of feel-good concoctions. Custom blends offer help for special cases, while soothing scented candles and other decor bring some inner calm into the home. A sister space located nearby offers yoga and workshops. Call for hours. [www.palosantowellnessboutique.com](http://www.palosantowellnessboutique.com). 1713 S. 12th St., 215.952.0360. **South of Map 1, I8**





## Books & Music

**ATOMIC CITY COMICS**—This funky shop carries a wide selection of comics, graphic novels, back issues, manga and T-shirts, plus movies, toys and games. Look for frequent in-store events, too, including book signings. M-Tu noon-9 pm, W-Sa, 11 am-11 pm, Su 11 am-9 pm. [www.bestphillycomics.com](http://www.bestphillycomics.com). 638 South St., 215.625.9613. **Map 1, J7**

**VINTAGE INSTRUMENTS**—Since 1974, Vintage Instruments has focused on fine acoustic instruments, featuring a wide selection of C.F. Martin & Co. guitars for everyone from weekend pickers to seasoned professionals. Plenty of treasures abound in this 19th-century architectural treasure, from ukuleles to banjos and mandolins. Accessories include cases, strings, straps and much more. M-F 10 am-5 pm. [www.pickamartin.com](http://www.pickamartin.com). 507 S. Broad St., 215.545.1000. **Map 1, H6**

## Gifts & Decor

**THE ART SHOP AT MOORE COLLEGE OF ART & DESIGN**—Within this formidable arts-education institution is an excellent shop dealing in jewelry, scarves and accessories, as well as prints, and greeting cards. The art and design pieces are created by Moore's emerging and established alumni in addition to current students. M-Sa 10 am-6 pm. [www.moore.myshopify.com](http://www.moore.myshopify.com). 1916 Race St., 215.965.8586. **Map 1, G4**

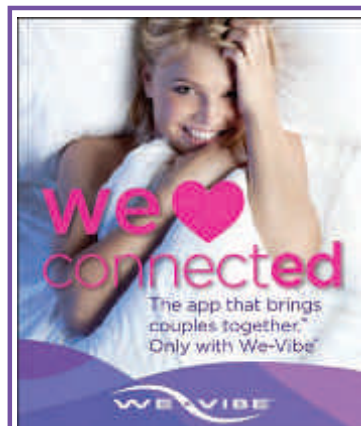
**BLENDO**—This charming collection of vintage and modern day gifts includes everything from handbags, to stationary and pottery. M-Sa 11 am-6 pm, Su 11 am-5:30 pm. [www.shopblendo.com](http://www.shopblendo.com). 1002 Pine St., 215.351.9260. **Map 1, I6**

**THE MUSEUM STORE AT PAFA**—The academy's gift shop stocks items inspired by exhibitions, plus accessories, jewelry, stationery and handcrafted decorative objects. Tu-Sa 9:30 am-5:30 pm, Su 11 am-5:30 pm. [www.pafa.org/store](http://www.pafa.org/store). 128 N. Broad St., 215.972.2075 **Map 1, H4**

**THE MUSEUM STORE AT THE PHILADELPHIA MUSEUM OF ART**—At the museum's gift shop, find items inspired by past and current exhibitions, including posters, prints, jewelry, music and DVDs, toys, housewares, clothing and accessories. Tu-Su 10 am-5 pm; W, F until 8:45 pm. [www.phila.museum.org/shopping](http://www.phila.museum.org/shopping). 2600 Benjamin Franklin Parkway, 215.684.7376. **Map 1, E2**

**THE PAPERY**—This Old City stationery mecca carries an upscale collection of paper goods and distinctive gifts, whether the occasion calls for classy or kitschy. Browse the wide selection of greeting cards, Italian leather albums, wax initial stamps and organizers. M-F 11 am-7 pm, W 11 am-8 pm, Sa 10 am-6 pm. [www.paperyofphilly.com](http://www.paperyofphilly.com). 1219 Locust St., 215.922.1500. **Map 1, K4**

**PHILADELPHIA INDEPENDENTS**—At this Old City gift shop, you won't find the usual Phillies T-shirts and Liberty Bell snow globes. Philadelphia Independents stocks only handmade items by local makers, including jewelry, ceramics, accessories, home decor, artwork and baby gifts. M-Sa 11 am-7 pm, Su 11 am-5 pm. [www.philadelphiaindependents.com](http://www.philadelphiaindependents.com). 35 N. Third St., 267.773.7316. **Map 1, K4**



Tickle any fancy with erotic treasures for adult pleasure for both men and women at The Pleasure Chest. This adult boutique located off Rittenhouse Square has been the best resource for quality products and knowledge since 1974.

Featuring brands such as, We-Vibe, Lelo, Liberator, Fleshlights, Tantus and many more for all of your intimate needs.



2039 Walnut Street  
215.561.7480  
[www.pleasurechestphilly.com](http://www.pleasurechestphilly.com)

Piazza Sempione  
Blumarine  
Fabiana Filippi  
Tom & Linda Platt  
Catherine Regehr  
Wolford  
Planet by Lauren G  
Up pants  
Sizes 2-18  
Daytime to Evening  
Fall 2018  
*Sophy Curson*  
19th & Sansom Streets 215.567.4662

Get travel tips and the city's inside scoop, delivered right to your inbox!

Sign up at  
[wheretraveler.com/newsletter-signup](http://wheretraveler.com/newsletter-signup)

**where**  
Local guides. Worldwide.  
[wheretraveler.com](http://wheretraveler.com)

**VERDE**—A wide variety of colorful jewelry, accessories, perfume and whimsical gifts fill this shop. Head to the rear to watch chocolatiers make Marcie Blaine artisanal truffles, then select a few treats to take home. M-Sa 11 am-8 pm, Su noon-6 pm. [www.verdephiladelphia.com](http://www.verdephiladelphia.com). 108 S. 13th St., 215.546.8700. **Map 1, I5**

## Gourmet & Specialty Foods

**DI BRUNO BROTHERS**—The original Italian Market outpost of this Philly mecca for world-class cheese bustles day and night. At the Chestnut Street

location, find a gourmet food emporium with takeout panini, gelato and additional specialty items. Hours vary by location. [www.dibruno.com](http://www.dibruno.com). The Market at Comcast Center, 1701 JFK Blvd., 215.531.5666. **Map 1, G4**; 1730 Chestnut St., 215.665.9220. **Map 1, G5**; Italian Market location: 930 S. Ninth St., 215.922.2876. **Map 1, J8**; The Franklin, 834 Chestnut St., 267.519.3115.

**ROCKET FIZZ**—Feed your nostalgia at this retro candy shop, offering everything from candy dots and whirly pops to bulk salt water taffy, plus, a variety of soda selections in flavors like bacon, s'mores

and mud pie. M-Th 11 am-7 pm, F-Sa 11 am-9 pm, Su 11 am-6 pm. [www.rocketfizz.com](http://www.rocketfizz.com). 302 Arch St., 215.650.3163. **Map 1, K4**

## Jewelry

**ADORNAMENTI**—This warm and inviting shop on Antique Row carries a beautiful array of distinctive jewelry, from delicate pieces crafted with finely wrought silver to opulent necklaces with semiprecious stones. M, W-Sa noon-6 pm, Su noon-5 pm. 1106 Pine St., 215.922.2722. **Map 1, I6**

**BELLA TURKA**—The local owners of this jewelry shop regularly travel around the world in search of chic baubles, like gold coin necklaces, cocktail rings and chunky stone cuffs, and also offer funky items from select domestic designers. M-Sa 11 am-8 pm, Su noon-6 pm. [www.bellaturka.com](http://www.bellaturka.com). 113 S. 13th St., 215.560.8733. **Map 1, I5**; 1700 Sansom St., 215.560.8734. **Map 1, G5**

**LAGOS**—Philadelphia-based jeweler Lagos' one-and-only flagship store has been a fixture, located just steps from Rittenhouse Square. This jewel-box shop features award-winning collections in sterling silver and 18-kt. gold. Steven Lagos has been designing beautiful pieces accented with gemstones, diamonds and pearls for 41 years. Friendly and knowledgeable staff makes the shopping experience a pleasure. M-Sa 10 am-7 pm, Su noon-6 pm. [www.lagos.com](http://www.lagos.com). 1735 Walnut St., 215.567.0770. **Map 1, G5**

**MARYANNE S. RITTER JEWELERS**—Open since 1909, this store's experts create custom designs for fine diamonds and gemstones, and offer quality jewelry at affordable prices. Look for a large selection of cultured freshwater and saltwater pearls. M-Tu and Th-F 10 am-5 pm, W 10 am-6 pm, Sa noon-5 pm. [www.maryannesritterjewelers.com](http://www.maryannesritterjewelers.com). 704 Sansom St., 215.701.6255. **Map 1, J5**

**TOURNEAU**—This international brand offers more than 100 watch brands, including Cartier, Ferragamo, Gucci, Movado and 8,000 unique styles for men and women. M-Sa 10 am-9 pm, Su 11 am-6 pm. [www.tourneau.com](http://www.tourneau.com). Plaza at King of Prussia Mall, 160 N. Gulph Road, King of Prussia, Pa., 610.491.8801. **Map 4, A3**

## Shoes

**BUS STOP BOUTIQUE**—British-born Elena Brennan has turned her Queen Village shop into a destination for fashionable shoes for both men and women. On historic Fabric Row, this hip shoe haven carries unique and comfy styles from hard-to-find designers. M-Sa 11 am-6 pm, F 11 am-7 pm, Su noon-5 pm. [www.busstopboutique.com](http://www.busstopboutique.com). 727 S. Fourth St., 215.627.2357. **Map 1, K7**

**LAPSTONE & HAMMER**—Kate Rohrer designed this only-in-Philadelphia haven for sneakerheads. While the store's collection of well-tailored menswear, grooming products and accessories have received rave reviews, what truly commands attention in this 4,000 square-foot space is its extensive sneaker collection. M-Sa 10 am-7 pm, Su noon-5 pm. [www.lapstoneandhammer.com](http://www.lapstoneandhammer.com). 1106 Chestnut St., 215.592.9166. **Map 1, I5**

**TOBOX SHOES**—This chic local men's shop caters to the stylish and sophisticated gentleman with a great selection of shoes, accessories and leather goods. Shop the hippest brands you can't find anywhere else like John Lobb, Carmina, and

PHILADELPHIA'S FASHION DESTINATION  
PHILADELPHIA'S FASHION DESTINATION  
PHILADELPHIA'S FASHION DESTINATION

JOAN SHEPP  
outfit by NORWA KAMAL  
1311 CHESTNUT ST. 215.735.3888







Rancourt. M-Sa 9:30 am-7 pm, W till 8 pm. 1822 Chestnut St., 215.644.9435. **Map 1, G5**

### Shopping Centers

**KING OF PRUSSIA MALL**—The East Coast's largest retail shopping complex includes seven world-class department stores including Bloomingdale's, Lord & Taylor and Nordstrom, plus 400 specialty shops and restaurants. The mall is easily accessible from Routes 202, Interstate 76 and the Pennsylvania Turnpike. M-Sa 10 am-9 pm, Su 11 am-6 pm. [www.kingofprussiamall.com](http://www.kingofprussiamall.com). 160 N. Gulph Road, King of Prussia, Pa., 610.265.5727. **Map 4, A3**

**SHOP PENN**—On the University of Pennsylvania campus in University City, find more than 75 national and independent retailers (Urban Outfitters, United By Blue, Amazon and Penn Bookstore), plus top-notch dining choices, art galleries and hotels. Hours vary by location. [www.shopsatpenn.com](http://www.shopsatpenn.com). 34th through 38th streets, Chestnut to Spruce streets. **Map 1, C5 to D6**

**THE SHOPS AT LIBERTY PLACE**—This indoor, Center City shopping complex for fashion, jewelry, housewares and more has 55 specialty boutiques and international eateries. Retailers include Bloomingdale's The Outlet Store, ALDO Shoes and J. Crew. Take in Philadelphia from new attraction, One Liberty Observation Deck. M-Sa 9:30 am-7 pm, Su noon-6 pm. [www.shopsatliberty.com](http://www.shopsatliberty.com). 1625 Chestnut St., between Liberty I and Liberty II office towers, 215.851.9055. **Map 1, H5**

### Specialty

**EYESITE**—Located near Rittenhouse Square, this gallery-style optical shop offers "museum-quality" prescription eyewear and sunglasses by independent makers around the world. Find frames made of wood, horn, even leather and stone. Custom work also available. Tu-F 10 am-6 pm, Sa till 5 pm. [www.eyesite-phil.com](http://www.eyesite-phil.com). 111 S. 18th St., 215.557.0757. **Map 1, G5**

**PLEASURE CHEST**—Located off Rittenhouse Square since 1974, this adult boutique offers intimate toys and products for men and women including lingerie. Lubricants, bachelorette goodies, harnesses, rabbits, and sensual novelties. The staff is discreet, knowledgeable and friendly and will customize every shopping experience. Open Tu-Sa 11 am-7 pm. [www.pleasurechestphilly.com](http://www.pleasurechestphilly.com). 2039 Walnut St., 215.561.7480. **Map 1, G5**

### Sporting Goods & Apparel

**MITCHELL & NESS**—The flagship store of this world-renowned sports-gear provider offers more than 1,600 authentic styles of vintage jerseys, hats, warm-ups, jackets and so much more. Sports fans should take a turn through the store just to see the museum-quality memorabilia. M-Sa 10 am-7 pm, Su 11 am-5 pm. [www.mitchellandness.com](http://www.mitchellandness.com). 1201 Chestnut St., 267.273.7622. **Map 1, I5**

**SHIBE VINTAGE SPORTS**—Founded by local sports enthusiasts, this store features retro-style shirts and hats appealing to the fashion-forward sports fan. The retailer's Originals line utilizes the talents of local artists and screen printers. Worldwide shipping available. [www.shibevintagesports.com](http://www.shibevintagesports.com). 137 S. 13th St., 215.566.2511. **Map 1, I5**

# Contessa's French Linens



Now selling machine washable linens made, designed and sewn in the South of France

- Authentic French tablecloth business
- One-of-a-kind, stain resistant linens
- Quimper Products
- Authentic French Jewelry
- Polish Pottery



Reading Terminal Market  
12 & Arch Streets, 3rd Ave., Row B  
610.306.4507 • [contessasfrenchlinens.com](http://contessasfrenchlinens.com)

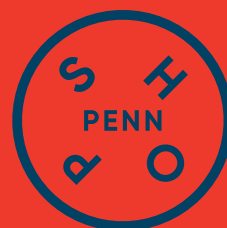
# Calling all Readers Leaders + Eaters

With more than 30 shops,  
40 restaurants, and  
15 sports and culture venues,  
a day at Penn could take  
you anywhere.

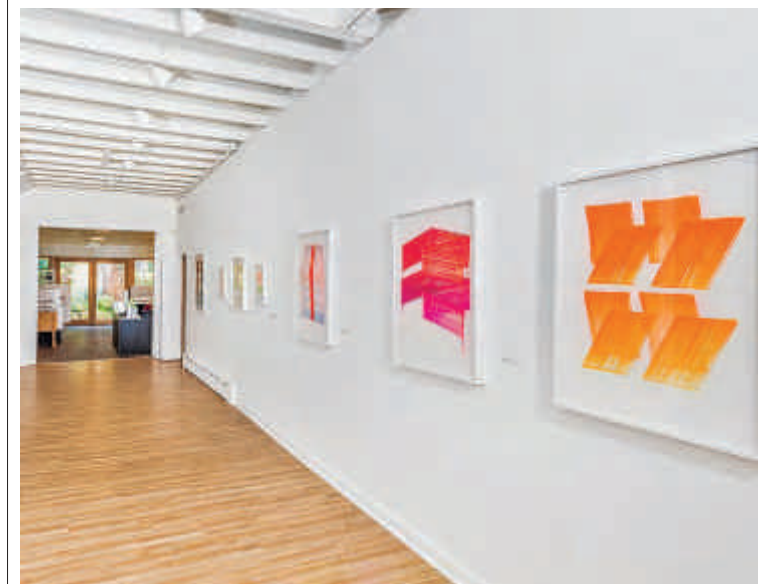
Shop smarter.  
Shop Penn.

#SHOPPENN  
@SHOPSATPENN

SHOPSATPENN.COM



## Galleries+Antiques | September



### The Print Center

Founded in 1915, this nonprofit gallery was one of the very first venues in the country dedicated to prints. The center continues to support printmaking and photography as vital contemporary arts with regularly scheduled exhibitions and a marvelous gallery store. [www.printcenter.org](http://www.printcenter.org). 1614 Latimer St., 215.735.6090. **Map 1, H6**

### Antiques Shops

**ANASTACIA'S ANTIQUES**—Anastacia's is brimming with affordably priced antiques and quirky collectibles of all kinds, from furnishings and lamps to dolls, books and jewelry. Staff occasionally takes shopping trips for merchandise during store hours, so call in advance. Th-Sa noon-6:30 pm, Su noon-5 pm. [www.anastaciasantiques.com](http://www.anastaciasantiques.com). 617 Bainbridge St., 215.928.9111. **Map 1, J7**

**ANTIQUE SHOWCASE**—Find fine European furniture, lighting accessories and objets d'art at this charming antique shop located in the ritzy Rittenhouse neighborhood. M-Sa 10 am-6 pm. [www.antiqueshowcase.com](http://www.antiqueshowcase.com). 1625 Pine St., 215.545.0860. **Map 1, H6**

**ARCHITECTURAL ANTIQUES EXCHANGE**—Spanning 30,000 square feet of space in the Northern Liberties neighborhood, this vast warehouse stocks a range of architectural antiques, from the late 1700s through the 1930s. Exciting items have been reclaimed from French castles and churches; others include mantels, doors, beds, carved furniture and ironwork. M-Sa 10 am-5 pm. [www.architecturalantiques.com](http://www.architecturalantiques.com). 715 N. Second St., 215.922.3669. **Map 1, K2**

**FREEMAN'S**—One of the premier auction houses for fine arts and antiques is also the nation's oldest. M-Th 9 am-5 pm, F 9 am-3 pm, special office hours during auction exhibitions. [www.freemansauction.com](http://www.freemansauction.com). 1808 Chestnut St., 215.563.9275. **Map 1, G5**

**GARDEN GATE ANTIQUES**—Another stop in Chestnut Hill, this two-story shop features a wide range of items from West African art to Steiff animals, including but not limited to vintage and antique furnishings, clothing, jewelry and books. M-Sa 11 am-5 pm, Su noon-5 pm. [www.bowmanch.com/property/gardengate](http://www.bowmanch.com/property/gardengate). 8139 Germantown Ave., 215.248.5190. **Map 3, B/C3**

**GEORGE T. HOBE ANTIQUES & FINE ART**—Art and artifacts from the 18th through the 20th centuries fill this cozy space to the brim. Objects sometimes even spill out onto the sidewalk for the casual passerby to admire. Tu-Th 7 am-2 pm or by appointment. 8407 Germantown Ave., 215.247.5733.

**KOHN & KOHN ANTIQUES**—Kohn & Kohn Antiques has been known for fine antiques in Philadelphia since 1932. Its inventory is broad with an emphasis on glass, furniture, porcelain and silver. Also check out the tobacciana collection, which includes cigarette cases, cigar cutters and elegant lighters. Open by appointment and by chance. [www.kohnandkohnantiques.com](http://www.kohnandkohnantiques.com). 1112 Pine St., 215.923.0432. **Map 1, I6**

**NIEDERKORN ANTIQUE SILVER**—For more than 25 years, Niederkorn Antique Silver has been focusing on 19th- and 20th-century fine silver. Located just off Rittenhouse Square, this tiny store brims with sterling Christmas ornaments, jewelry, tea

There's a lot more going on this September. Visit us online: [wheretraveler.com](http://wheretraveler.com)

sets and napkin rings, Judaica, desk accessories and books on the art of silversmithing. Tu-Th 11:30 am-7 pm, F-Sa 11:30 am-5:30 pm. [www.niederkornsilver.com](http://www.niederkornsilver.com). 244 South 22nd St., 215.567.2606. **Map 1, G6**

**THE PHILADELPHIA PRINT SHOP**—Pore over the impressive collection of more than 20,000 historical prints and antique maps from the 16th through the early-20th centuries. Those looking for an affordable piece of fine art will have luck here—many prints are priced under \$100. M-Sa 10 am-5 pm. [www.philaprintshop.com](http://www.philaprintshop.com). 8441 Germantown Ave., 215.242.4750. **Map 3, B2**

### Art Galleries

**3RD STREET GALLERY**—In the heart of Old City's gallery district, 3rd Street Gallery features a diverse mix of artists working in various media. In operation since 1978, this artist-run cooperative is devoted to presenting a quality experience of visual arts, all the while encouraging risk and experimentation in their artists' works. W-Su noon-5 pm. [www.3rdstreetgallery.com](http://www.3rdstreetgallery.com). 45 N. Second St., 215.625.0993. **Map 1, K4**

**THE BAZEMORE GALLERY**—Located in Manayunk, this gallery features an array of artists inside a space whose design is based on the five elements of Feng Shui. Find pop imagery, abstract landscapes, glass blown artwork and more, plus, rotating exhibits and The Living Wall, an indoor

COURTESY THE PRINT CENTER

**TGIF!** On the first Friday of every month, art galleries and shops in the Old City neighborhood stay open late, hosting new exhibits and special events.





## THE GUIDE

sustainable planting panel. W- Su noon-7 pm. [www.thebazemoregallery.com](http://www.thebazemoregallery.com). 4339 Main St., 215.482.1119.

**BLUESTONE FINE ART GALLERY**—This gallery features original works by contemporary and traditional artists in a range of mediums, including painting, ceramics and sculptures. See the work of well-known and emerging local artists. Each month new exhibitions kick off during Philadelphia's First Fridays, which draws hundreds of art lovers to the neighborhood. Tu-F 10 am-5 pm, Sa noon-4 pm. [www.bluestone-gallery.com](http://www.bluestone-gallery.com). 72 N. Second St., 856.979.7588. **Map 1, K4**

**BORRELLI'S CHESTNUT HILL GALLERY**—Representing 40 local, national and international artists, this gallery and custom framing shop offers a diverse collection of landscapes, cityscapes and still lifes from many schools of painting. Regular, rotating exhibitions feature represented artists. The custom framing center offers everything from restoration to museum-quality looks. Tu-F 10 am-5:30 pm, Sa 10 am-5 pm, Su noon-4 pm. [www.chestnuthillgallery.com](http://www.chestnuthillgallery.com). 1 East Gravers Lane, 215.248.2549.

**BRIDGETTE MAYER GALLERY**—Established in 2001, this 3,000-square-foot gallery exhibits contemporary work by artists living in the U.S. and abroad. Find paintings, sculptures and photography with an emphasis on beauty, technology and culture. Tu-Sa 10 am-6 pm and by appointment. [www.bridgettemayergallery.com](http://www.bridgettemayergallery.com). 709 Walnut St., 215.413.8893 **Map 1, J5**

**CALDERWOOD GALLERY**—Owners Gary and Janet Calderwood showcase their personal art collection of 20th-century design and fine photography across 30,000 square feet of space. Find museum-quality French Art Deco by Ruhlmann, Arbus, Dufrene and others, Mid-century Modern decorative arts and more. Gary Calderwood's photography presents a visual history of the 20th century. Ships internationally. M-F 11 am-5 pm, Sa-Su by appointment. [www.calderwoodgallery.com](http://www.calderwoodgallery.com). 242 Geiger Road, 215.546.5357.

**CARRÉ D'ARTISTES**—This art gallery is a leader in affordable, contemporary art, selling world-class, original paintings and specializing in a wide variety of artistic styles, from figurative and abstract to landscape, Pop and street art, all created by a vast collection of internationally known artists. Framing services available. Daily 11 am-8 pm, extended hours on First Fridays. [www.carredartisteshilly.com](http://www.carredartisteshilly.com). 104 S. 13th St., 215.735.2800. **Map 1, I5**

**THE CENTER FOR ART IN WOOD**—This not-for-profit museum, gallery and research center focuses on woodworks, showcasing all methods of wood art-making including turned and carved sculptures by renowned artists and craftsmen. Tu-Sa 10 am-5 pm. [www.centerforartinwood.org](http://www.centerforartinwood.org). 141 N. Third St., 215.923.8000. **Map 1, K4**

**THE CENTER FOR EMERGING VISUAL ARTISTS**—This local resource fosters the development and careers of visual artists, among them Lori Banks, Colette Fu and Jack McGovern. Open M-F 11 am-5 pm, or by appointment. [www.cfeva.org](http://www.cfeva.org). The Barclay, 237 S. 18th St., Suite 3A, 215.546.7775. **Map 1, G6**

**CERULEAN ARTS GALLERY & STUDIO**—Located just off of North Broad Street, the gallery exhibits eclectic decorative and fine art while the studio offers art instruction and weekend workshops. In addition to the displayed works of more than 100 artists, the gallery also proffers handmade wares from an additional 100 artisans. W-F 10 am-6 pm, Sa-Su noon-6 pm. [www.ceruleanarts.com](http://www.ceruleanarts.com). 1355 Ridge Ave., 267.514.8647. **Map 1, H2**

**DA VINCI ART ALLIANCE**—Founded in 1931, this South Philly-based nonprofit organization holds programs year-round in order to support regional artists. Programs include juried exhibitions, solo exhibitions and collaborations with other nonprofit art organizations. Most events are free and open to the public. W 6-8 pm, Sa-Su 1-5 pm. [www.davinciartalliance.org](http://www.davinciartalliance.org). 704 Catharine St., 215.550.1446. **Map 1, J7**

**EAST FALLS GLASSWORKS**—It's worth the trek out to the East Falls neighborhood to visit this hidden treasure, where Philadelphia artists work with hot molten glass to create beautiful works of art. The teaching studio's on-site gallery displays and sells a small collection of works by area artists. Class schedule online. M-F 10 am-6 pm, Sa-Su by appointment. [www.eastfallsglass.com](http://www.eastfallsglass.com). 3510 Scotts Lane, 215.908.7924.

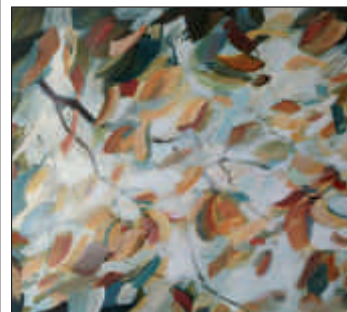
**F.A.N. GALLERY**—Located in a 1700's Colonial building in Old City, this gallery features emerging and established artists in the classic tradition of American painting. The first floor features a different artist each month, with many from right here in Philadelphia. The second floor displays group exhibitions, ranging from figurative to landscape and still-life. W-Su noon-6 pm. [www.thefangallery.com](http://www.thefangallery.com). 221 Arch St., 215.922.5155. **Map 1, K4**

**FLEISHER ART MEMORIAL**—In addition to offering a rotating display of wide-ranging works by local artists, this gallery also hosts an extensive catalog of inexpensive workshops and free classes for all skill levels. M-F 10 am-5 pm. [www.fleisher.org](http://www.fleisher.org). 719 Catharine St., 215.922.3456. **Map 1, J7**

**GERSHMAN GALLERY**—Collectors and art lovers here find innovative works celebrating Jewish culture, as well as a showcase of fine art photography. Located inside the Gershman Y. M-F 9 am-5 pm. [www.gershmany.org](http://www.gershmany.org). 401 S. Broad St., 215.545.4400. **Map 1, H6**

**GRAVERS LANE GALLERY**—Located in Chestnut Hill, this edgy, contemporary art gallery exhibits works by both established and emerging artists from around the world. Its media spectrum is broad, including painting, sculpture, fiber and paper. Open M-Sa 10 am-6 pm, Su noon-5 pm. [www.graverslanegallery.com](http://www.graverslanegallery.com). 8405 Germantown Ave., 215.247.1603.

**GROSS MCCLEAF GALLERY**—Representing local and national artists with a focus on contemporary art, this gallery has been active in the Philadelphia arts community for more than 40 years. Advising collectors and placing art in museums throughout the region, Gross McLeaf also features monthly rotating exhibitions in two main galleries, as well as special events, artist talks and an extensive inventory. T-Sa 10 am-5 pm. [www.grossmcleaf.com](http://www.grossmcleaf.com). 127 S. 16th St., 215.665.8138.



**Holly Van Hart**  
*Branching Boundlessly*  
30 x 40  
Mixed Media

### Bluestone Fine Art Gallery

72 North 2nd Street • Philadelphia  
856.979.7588 • [bluestone-gallery.com](http://bluestone-gallery.com)

Complimentary Shipping  
within the United States

Where do you  
want to go?

Find the best of the city



[wheretraveler.com](http://wheretraveler.com)

FRINGE ARTS

# FRINGE FESTIVAL

WORLD PREMIERE!

HOME

Geoff Sobelle

September 13-16  
Prince Theatre

TICKETS: [FringeArts.com](http://FringeArts.com)

**VENTUROUS**  
Theater Fund

Funding for this presentation of HOME was provided in part by the Venturous Theater Fund of the Tides Foundation.

HOME is funded in part by The Wyncote Foundation, Adam Max, and American Dance Institute.





# Dining | September



## Oloroso

The simple façade may make this Center City restaurant easy to miss, but diners on the hunt for good food should take notice. Inside, well-regarded chef Townsend Wentz of Townsend and A Mano presides over an open kitchen, where he deftly prepares Spanish tapas with contemporary American flavors. Diners can expect a

flurry of super-sized small plates bearing the smokiness that comes from a wood-burning oven. Our picks? Start with the brussels sprouts, followed by the squid ink rice, and then the organic chicken. You won't be sorry you stopped in after all. [www.olorosophiladelphia.com](http://www.olorosophiladelphia.com). 1121 Walnut St., 267.324.3014. Map 1, H5



## Urban Farmer

On historic Logan Square, this steakhouse takes pride in using locally sourced, farm-fresh ingredients in its straightforward preparations and recipes. In return, diners get soul-satisfying meals that are also good for the planet. [www.urbanfarmerphiladelphia.com](http://www.urbanfarmerphiladelphia.com). 1850 Benjamin Franklin Parkway, 215.963.2788. Map 1, G4

## Avenue of the Arts

**AQIMERO—New Latin.** Inside the lobby of the iconic Ritz-Carlton Philadelphia, across from City Hall, acclaimed chef Richard Sandoval serves up everything from sushi and ceviche to sustainably caught seafood creations with a Latin accent. B, D (daily), L (M-F), Br (Sa-Su). [www.aqimero.com](http://www.aqimero.com). 10 Avenue of the Arts, 215.523.8200. \$\$\$ Map 1, H5

**JET WINE BAR—Wine Bar.** This smart wine bar offers an intriguing list of more than two dozen global vintages by the glass. Find Hungarian somlo and German pinot noir. Pair your choice with tasty bites such as ahi poke wontons, roasted scallion lebnah or an artisanal cheese plate. D (daily), Br (Sa-Su). [www.jetwinebar.com](http://www.jetwinebar.com). 1525 South St., 215.735.1116. \$\$\$ Map 1, H7

**MCCORMICK & SCHMICK'S—Seafood.** This bustling 290-seat establishment brings the flavors of the Pacific Northwest to Philadelphia, plus draft beers, single malts and Northwest wines. For a more intimate meal, head upstairs to cozy booths. L, D (daily). [www.mccormickandschmicks.com](http://www.mccormickandschmicks.com). 1 S. Broad St., 215.568.6888. \$\$\$ Map 1, H5

**MORTON'S, THE STEAKHOUSE—Steak.** An extensive wine selection is just a bonus of this signature Chicago steakhouse experience. Wet-aged prime beef broiled Midwestern-style makes for hearty, large portions, but also try pork, lamb and veal chops, as well as tasty seafood offerings. D (daily). [www.mortons.com](http://www.mortons.com). 1411 Walnut St., 215.557.0724. \$\$\$ Map 1, H5

**SO CREPE—French.** French owners Frederic Elmalek and Fabrice Goutte batter up authentic sweet and savory crepe varieties and make everything in house, from the whipped cream to the salted butter caramel. B, L (M-Sa), D (daily), Br (Su). [www.socrepe.com](http://www.socrepe.com). 1506 South St., 267.761.9310. \$ Map 1, H7

**TAVERN ON BROAD—American.** Head beneath the Bellevue building for burgers and beers, plus the game on one of the restaurant's 34 high-definition TVs. Space for private parties available. L, D (daily). [www.tavernonbroad.com](http://www.tavernonbroad.com). The Bellevue, 200 S. Broad St., 215.546.2290. \$ Map 1, H5

**VALANNI—Mediterranean.** Sleek yet laid-back, this neighborhood spot is a few blocks from the Avenue of the Arts. Tuck into modern Mediterranean entrées and appetizers like spicy pulled chicken empanadas, lamb sliders and paella. D (daily), Br (Su). [www.valanni.com](http://www.valanni.com). 1229 Spruce St., 215.790.9494. \$\$\$ Map 1, I6

**VOLVER—American.** Volver is Spanish for "to return," and with this high-class restaurant, chef Jose Garces does just that, revisiting his favorite culinary experiences from around the world. The diverse, seasonal, and often locally sourced menu features some of the most innovative dishes in the city. D (Tu-Sa). [www.volverrestaurant.com](http://www.volverrestaurant.com). 300 S. Broad St., 215.670.2302. Map 1, H6

There's a lot more going on this September. Visit us online: [wheretotraveler.com](http://wheretotraveler.com)

**XIX (NINETEEN)—American.** For a special evening, take the elevator to the 19th floor of the Hyatt Philadelphia at The Bellevue. Settle in beneath the restaurant's spectacular pearl chandelier, or enjoy your meal in the more relaxed cafe space. B, L (M-Sa), D (daily), Br (Su). [www.nineteenrestaurant.com](http://www.nineteenrestaurant.com). Hyatt Philadelphia at The Bellevue, 19th floor, Broad and Walnut sts, 215.790.1919. \$\$\$ Map 1, H5

## Center City & Rittenhouse

**A.KITCHEN—Mediterranean.** An open kitchen, shared plates and a casual yet sophisticated atmosphere define this well-regarded European-style eatery. Expect a thoughtful wine list, craft beers and tasty cocktails. B, L (M-F), D (daily), Br (Sa-Su). [www.akitchenandbar.com](http://www.akitchenandbar.com). 135 S. 18th St., 215.825.7030. \$ Map 1, G5

**BAOLOGY—Taiwanese.** Husband-and-wife team, Judy Ni and Andy Tessier's first restaurant serves up fast-casual street food with a roster of ingredients that changes with the season. On the menu, find Ni's childhood favorites the way her grandmother made: Berkshire pork, shrimp and spinach potstickers; Taiwanese free-range fried chicken; wild-caught shrimp ruen bings (like a mini burrito). L (M-Sa), D (M-F). [www.baoology.com](http://www.baoology.com). 1829 John F. Kennedy Blvd., 215.999.2263. \$ Map 1, G4

**BAR BOMBÓN—Vegan.** Like the rest of the items on the menu here, the Puerto Rican empanadas include only veggies. If time is tight, order nachos and stuffed plantains to go from the convenient takeout window. L, D, Br (daily). [www.barbombon.com](http://www.barbombon.com). 133 S. 18th St., 267.606.6612. \$ Map 1, G6

**BLUESTONE LANE—Coffee House.** This Australian-style cafe pours caffeinated drinks, plus a signature avocado "smash" on multigrain toast with sunflowers and a pepita-seed pesto, goat cheese and an optional organic poached egg. B, L (daily). Hours and meals vary by location. [www.bluestonelaney.com](http://www.bluestonelaney.com). 1701 Locust St., 718.374.6858. \$ Map 1, G6; 160 N. Gulph Road, 267.758.5915.

**BUTCHER AND SINGER—Steak.** This stunning steak and chop house from Stephen Starr has a modern supper-club vibe, thanks to 28-foot-high ceilings, seductive leather booths, bold draperies and two magnificent chandeliers. It's a glam setting for tucking into Starr's top-notch steaks and chops. L (M-F), D (daily). [www.butcherandsinger.com](http://www.butcherandsinger.com). 1500 Walnut St., 215.732.4444. \$\$\$ Map 1, H5

**DEL FRISCO'S DOUBLE EAGLE STEAK HOUSE—Steakhouse.** Enjoy top-quality steaks in an elegant booth or drink up at one of a handful of bars located within the sweeping former First Pennsylvania Bank building. Patrons can dine in the Vault Room (a former bank vault) or below the restaurant's extravagant three-story wine tower. L (M-F), D (Daily). [www.delfrisco.com](http://www.delfrisco.com). 1426 Chestnut St., 215.246.0533. \$\$\$ Map 1, H5

**ERAWAN THAI CUISINE—Thai.** This inviting BYOB offers tasty and authentic dishes with fresh ingredients. A friendly staff helps guests select spices to fit specific tastes. BYOB. L, D (Tu-Su). [www.erawanthaiphilly.com](http://www.erawanthaiphilly.com). 123 S. 23rd St., 215.567.2542. \$ Map 1, F5

**FINE PALATE—Global American.** This fine-dining establishment focuses on globally inspired fare using high-quality ingredients. Enjoy fried oysters at brunch and pork belly, quail and black truffle mac and cheese at dinner. D (Tu-Sa), Br (Sa-Su). [www.finepalategroup.com](http://www.finepalategroup.com). 231 S. 15th St., 267.318.7971. \$\$\$-\$\$\$ Map 1, H6

**GOLDIE—Middle Eastern.** From James Beard Award-winner Michael Solomonov and Steve Cook, owners of lauded Zahav, comes this fast-casual concept with a simple menu: falafel, fries and tehina shakes. Located above Rooster Soup Company. L, D (daily). [www.goldiefalafel.com](http://www.goldiefalafel.com). 1526 Sansom St., 267.239.0777. \$ Map 1, H5; 2101 Pennsylvania Ave., 215.557.0015.

**HARP & CROWN—American.** Upstairs, a vintage-wallpapered 140-seat dining room provides Old World-style ambiance, while downstairs, a bar and two-lane, reservations-only bowling alley called Elbow Lane keep revelers entertained. For sustenance, find wood-fired pizza, charcuterie and New American entrees, plus a distinctive cocktail list. D (daily), Br (Sa-Su). [www.harpandcrown.com](http://www.harpandcrown.com). 1525 Sansom St., 215.330.2800. \$ Map 1, H5

**JAMES—American.** This restaurant aims to blend a cozy dining experience with modern American cuisine, like bacon wrapped meatloaf and Moroccan-spiced wings. The restaurant's signature cocktails are the efforts of a team of veteran mixologists, crafted with local spirits and fresh-squeezed juices. L (M-F), D (daily), Br (Sa-Su). [www.jamesphiladelphia.com](http://www.jamesphiladelphia.com). 1835 Arch St., 267.324.5005. \$\$\$

**JOE COFFEE—Coffee.** Founded in 2003 in New York City's West Village, Joe has made its way to Philadelphia with locations in University City and Rittenhouse Square. With a commitment to fair trade and quality, this cafe aims to make a cup of coffee that's satisfying in more ways than one. Hours vary by location. [www.joecoffee.com](http://www.joecoffee.com). 1845 Walnut St., 215.278.2454. \$ Map 1, G5; 3200 Chestnut St., 215.240.4577. Map 1, D5

**KAYU—American.** Healthy grain bowls, soups, sandwiches and DIY salads greet folks at this bright and friendly spot inside the 3 Logan Square building. B, L (M-F). [www.kayufoods.com](http://www.kayufoods.com). 1717 Arch St., 267.639.9949. \$ Map 1, G4

**LA COLOMBE—Coffeeshop.** Founded by locals, this Euro-style cafe pours top-notch coffee following five principles: fairness, longevity, opportunity, water and strict earth consciousness. The Fish-town HQ offers a hip, warehouse-like vibe and friendly staff for relaxing with a cuppa and tucking into tasty pastries. B, L, D (daily). [www.lacolombe.com](http://www.lacolombe.com). 130 S. 19th St., 215.563.0860. \$ Map 1, G5; 1414 S. Penn Square, 215.977.7770. Map 1, G5; 1335 Frankford Ave., 267.479.1600; 100 S. Independence Mall W., 267.479.1650.

**LACROIX—French.** Featuring sumptuous cuisine, a top-notch wine list and inviting décor, Lacroix has rightfully earned its reputation as one of the city's best dining destinations. Reservations suggested. B, L, D, Br (daily). [www.lacroixrestaurant.com](http://www.lacroixrestaurant.com). 210 W. Rittenhouse Square, 215.790.2533. \$\$\$ Map 1, G6

**LE CHERI—Classic French.** Pierre and Charlotte Calmels' elegant Art Alliance restaurant offers Old World traditions in dishes like lamb osso bucco, poached halibut and a classic onion soup gratinée. Reservations are required for the dining rooms, but the 14-seat bar is walk-in only. D (W-Su), Br (F-Su). [www.lecheriphilly.com](http://www.lecheriphilly.com). 251 S. 18th St., 215.546.7700. \$\$\$-\$\$\$ Map 1, G6

**THE LOVE—American.** Aimee Olexy and James Beard Award-winner Stephen Starr's venture gives ample reason for falling in love, from the tasty fare to the cozy bar and dimly lit dining room. Stop in for a cocktail with clever names like "A Very Good Bourbon Drink," mixing Jim Beam Black with Gran Classico Bitter, Iris vermouth and apple cider. Move on to dinner with approachable, yet creative dishes like whole smoked trout with kale, maple farro and spicy pecans. Groups of up to 20 spread the good vibes around a country-style communal table in the upstairs loft. L (M-F), D (daily), Br (Sa-Su). [www.theloverestaurant.com](http://www.theloverestaurant.com). 130 S. 18th St., 215.433.1555. \$ Map 1, G5

**MARATHON GRILL—American.** Popular with the downtown work crowd, families and ladies who lunch, this casual spot features all day breakfast, "Control Freak" salads, great grilled items, burgers and smoothies. Hours vary by location. [www.marathongrill.com](http://www.marathongrill.com). 121 S. 16th St., 215.569.3278. \$ Map 1, H5; 1818 Market St., 215.561.1818. Map 1, G5; 1839 Spruce St., 215.731.0800. \$ Map 1, G6

**OCEAN PRIME—Seafood & Steak.** Most of the dishes on the seafood-forward menu at this splashy outpost from restaurateur Cameron Mitchell are made from scratch. Don't miss the restaurant's famous 10-layer carrot cake or something from the Wine Spectator Award-winning wine collection and signature cocktail list. D (daily). [www.oceanprime.com](http://www.oceanprime.com). 210 W. Rittenhouse Square, 215.558.4199. \$\$\$-\$\$\$ Map 1, G6

[ocean-prime.com](http://ocean-prime.com). 124 S. 15th St., 215.563.0163. \$\$\$ Map 1, H5

**PARC—French.** From Philly restaurateur Stephen Starr comes this see-and-be-seen brasserie overlooking Rittenhouse Square. Classic fare, décor (a zinc bar, vintage photos), lively sidewalk tables and a chic crowd give this spacious restaurant endless appeal. B, L, D (daily), Br (Sa-Su). [www.parc-restaurant.com](http://www.parc-restaurant.com). 227 S. 18th St., 215.545.2262. \$ Map 1, G6

**PLENTY CAFE—American.** This "Best of Philly" European-style spot offers a Pinterest-worthy backdrop for tucking into a menu that trots the globe. Dishes include Spanish frittata and shakshuka, plus breakfast all day. Caffeine fiends will be pleased to find a java program that partners with Square One Coffee, pouring single-origin nitros, cold brews and even a seasonal coffee soda on tap. Beer, wine, cocktails. B, L, D (daily). [www.plentyphiladelphia.com](http://www.plentyphiladelphia.com). 1602 Spruce St., 215.560.8684. \$-\$\$ Map 1, H6; 1710 E. Passyunk Ave., 267.909.8033; 705 S. Fifth St., 267.758.6791.

**POIDOG—Hawaiian.** This former food truck now calls a brick-and-mortar storefront home for serving Hawaiian comfort foods with a modern twist. Dig into lighter fare like tuna poke with macadamia nuts and Spam musubi, or stick-to-your-bones plates of kalua pig, mochi nori fried chicken or pork belly adobo with macaroni salad and white rice. Sweet endings include bibinka (Filipino coconut cake with guava caramel), andagi (Okinawan donuts) and butter mochi. L, D (M-Sa). [www.poidogphilly.com](http://www.poidogphilly.com). 102 S. 21st St., 215.279.7015. \$ Map 1, F5

**THE PRIME RIB—Steak.** This "civilized" supper club serves acclaimed USDA prime cuts, seafood that's flown in daily and wines from a top-notch list. The sophisticated dining room takes diners back to the 1940s, with live piano nightly in the romantic, dimly lit lounge. D (daily). [www.theprimerib.com](http://www.theprimerib.com). 1701 Locust St., 215.772.1701. \$\$\$ Map 1, G6

**PUB & KITCHEN—Contemporary European.** Opened in 2008, Pub & Kitchen combines the sophistication of contemporary European cuisine with the comfort and warmth of an authentic neighborhood tavern. With a frequently changing menu and an extensive list of spirits, beer and wine, Pub & Kitchen is a casual and energetic space where well-crafted food and drink go hand-in-hand. D (daily), Br (Sa-Su). [www.thepubandkitchen.com](http://www.thepubandkitchen.com). 1946 Lombard St., 215.545.0350. \$\$\$ Map 1, G6

**R2L—American.** Located on the 37th floor of Two Liberty Place, chef Daniel Stern's restaurant offers modern twists on traditional American flavors. The stunning skyline views make this spot one of Philly's most spectacular dining destinations. D (daily). [www.r2lrestaurant.com](http://www.r2lrestaurant.com). 50 S. 16th St., 37th floor, 215.564.5337. \$ Map 1, H5

**SCARPETTA—Modern Italian.** The Rittenhouse Hotel's James Beard-nominated restaurant offers a sophisticated wine cellar-like dining room for indulging in upscale Italian cuisine made with local ingredients. Expect house-made pastas, like the restaurant's signature, tomato and basil spaghetti, plus dishes like Niman Ranch porterhouse lamb. Extensive wine list, distilled spirits, cocktails and beer. D (daily). [www.scarpettarestaurants.com](http://www.scarpettarestaurants.com). 210 W. Rittenhouse Square, 215.558.4199. \$\$\$-\$\$\$ Map 1, G6



**OENO FILES** With more than 200 "bring your own bottle" restaurants, Philadelphia is one of only a few U.S. cities to have a "BYOB" category in the Zagat Survey.







**SEAFOOD UNLIMITED—Seafood.** Located just off of Rittenhouse Square, this intimate neighborhood favorite specializes in simply prepared fresh fish and seafood selections. D (M-Sa). [www.seafoodunlimited.com](http://www.seafoodunlimited.com). 270 S. 20th St., 215.732.3663. \$\$\$ Map 1, G6

**VIC SUSHI—Sushi.** This no-frills BYOB plates classic crowd-pleasers like Philadelphia and California rolls, along with inventive house specials and delicious tuna dumplings. L, D (M-Sa). [www.vic-sushi.com](http://www.vic-sushi.com). 2035 Sansom St., 215.564.4339. \$ Map 1, G5

## Chinatown

**NAN ZHOU HAND DRAWN NOODLE HOUSE—Chinese.** As the name suggests, folks come here for the handmade noodles in savory soups, but the restaurant also dishes out plenty of other delicious dishes from freshly made dumplings to mapo tofu, making it a must-stop in Chinatown. BYOB. Cash only. L, D (daily). [www.nanzhounoodlehouse.com](http://www.nanzhounoodlehouse.com). 1022 Race St., 215.923.1550. \$ Map 1, J4

**VIETNAM RESTAURANT—Vietnamese.** This beloved mom-and-pop eatery located in the heart of the Chinatown neighborhood serves authentic Vietnamese cuisine at accessible prices. On the third floor find Bar Saigon, modeled after 1930s Saigon dance clubs, where guests sing karaoke and sample delicious cocktails to their heart's content. L, D (daily). [www.eatvietnam.com](http://www.eatvietnam.com). 221 N. 11th St., 215.592.1163. \$\$ Map 1, I4

## Convention Center

**HARD ROCK CAFE—American.** Philly's outpost of the international phenomenon is located in the historic Reading Terminal train station, steps from the Convention Center and a few blocks from the historic district. Inside, the restaurant is filled with its trademark rock memorabilia, plus a gift shop of Hard Rock-branded souvenirs. On the menu, find favorites like "Legendary Burgers," steaks, salads and sandwiches. L, D (daily). [www.hardrock.com](http://www.hardrock.com). 1113-31 Market St., 215.238.1000. Map 1, I4

**MOLLY MALLOY'S—Pub/Bar.** Nestled in the heart of the historic Reading Terminal Market, this airy gastropub from the folks behind Iovine Brothers produce serves seasonal fare from chef Bobby Fisher and pours craft beers, 35 of which are on draft. B, L, D (daily). [www.mollymalloyshilly.com](http://www.mollymalloyshilly.com). Reading Terminal Market, 1136 Arch St., 267.525.1001. \$ Map 1, I4

**READING TERMINAL MARKET—International.** Founded in 1893, Reading Terminal Market has evolved into one of Philadelphia's major food meccas, where visitors can sample international and local specialties, including cheesesteaks and Pennsylvania Dutch treats. B, L, D (daily). [www.readingterminalmarket.org](http://www.readingterminalmarket.org). 12th and Arch streets, 215.922.2317. \$ Map 1, I4

## Old City

**DINARDO'S FAMOUS SEAFOOD—Seafood.** This family-owned seafood house is an Old City institution, serving up outstanding steamed hard-shell crabs and sautéed garlic crabs since 1976. Grilled steaks, chicken and fresh pasta are also featured. L (M-Sa), D (daily). [www.dinardos.com](http://www.dinardos.com). 312 Race St., 215.925.5115. \$\$\$ Map 1, K4

**FEZZIWIG'S SWEET SHOPPE—American.**

This charming eatery located near all the sites combines an old fashioned ice cream parlor/sweet shop with a classic soda fountain and a modern cafe. In addition to delectable desserts and pastries, find savory treats including burgers, cheesesteaks and hand-cut fries. B, L, D (daily). [www.fezziwigsphiladelphia.com](http://www.fezziwigsphiladelphia.com). 267.457.3608. Map 2, D4

**FORK—American.** One of Old City's original restaurant pioneers, Fork offers simple elegance with an open kitchen. Menu changes often. D (daily), Br (Su). [www.forkrestaurant.com](http://www.forkrestaurant.com). 306 Market St., 215.625.9425. \$\$\$ Map 1, K5

**JOLLY'S DUELING PIANO BAR—American.** Founded by Jolly Weldon, this rollicking piano bar features, yes, two instruments with pianists duking it out with musical selections from rock, pop and more. Pizzas provide sustenance for all-night singalongs with craft beers and specialty cocktails fueling the fun. D (daily). [www.jollysduelingpianobar.com](http://www.jollysduelingpianobar.com). 215.238.1333. \$\$ Map 2, E6

**ZAHAV—Middle Eastern.** At his heralded restaurant perched above the street, James Beard Award-winning chef Michael Solomonov carefully prepares creative, contemporary Israeli food. A well-edited à la carte menu highlights small plates and salatin—a colorful collection of cold salads that traditionally start meals in Israel. The "Tayim" tasting option offers a good base for those new to the cuisine and includes Solomonov's famous hummus (we like the Turkish variety, which is served warm in its own mini cast-iron pan) and feather-light laffa bread. Heftier fare includes coal-fired kebabs and a hangar steak. Inventive cocktails; wine list with Israeli varietals. Reservations recommended. D (daily). [www.zahavrestaurant.com](http://www.zahavrestaurant.com). 237 St. James Place, 215.625.8800. \$\$ Map 1, K6

## Penn's Landing & Waterfront

**CHART HOUSE—Seafood.** Waterfront views of Penn's Landing, the Delaware River and the Philadelphia skyline set a dramatic stage for updated classic steaks and seafood entrées, along with renowned prime rib specials. D (daily), Br (Su). [www.chart-house.com](http://www.chart-house.com). 555 S. Columbus Blvd., 215.625.8383. \$\$ Map 1, L7

**MOSHULU—American.** This four-masted ship has been gloriously transformed into a riverside dining destination, serving tasty dishes with attentive service and stunning views. Private party accommodations available. D (daily), Br (Su). [www.moshulu.com](http://www.moshulu.com). 401 S. Columbus Blvd., 215.923.2500. \$\$\$ Map 1, L6

## South Philly & Italian Market

**GENO'S STEAKS—Cheesesteaks.** Geno's serves up classic steaks with Philly flair. The inevitable line provides time to figure out what to order; when you get to the counter, make it fast and simple. Cash only. B, L, D (daily, 24 hours). [www.genossteaks.com](http://www.genossteaks.com). 1219 S. Ninth St., 215.389.0659. \$ Map 3, E2

**GREEN EGGS CAFE—American.** This brunch-style restaurant with two locations is a favorite for mouth-watering options like smoked Atlantic salmon omelet, Belgian waffles and a variety of sandwiches and salads. (Cash only). B, L, Br (Daily). 1306 Dickinson St., 215.266.3447; 719 N. Second St., 215.922.3447. \$

RISTORANTE  
**AROMA**



Italian chef - expertly  
crafted Italian cuisine  
Homemade pasta,  
cheese, bread  
and dessert  
Washington Square's  
best kept secret

**DINNER  
DAILY**

1120 Pine Street  
**267-314-5315**  
[www.ristorantearomaphilly.com](http://www.ristorantearomaphilly.com)

Delivery available through  
[trycaviar.com](http://trycaviar.com) and [ubereats.com](http://ubereats.com)

Here today.  
where tomorrow.

Before you travel,  
go to [wheretraveler.com](http://wheretraveler.com)  
and see where to shop, dine  
and play once you arrive.

[wheretraveler.com](http://wheretraveler.com)  
Info only. Locals know.

## THIS IS HOW IT'S DONE



215.928.1911 • 4TH & SOUTH ST. • PHILADELPHIA • [JIMSSOUTHSTREET.COM](http://JIMSSOUTHSTREET.COM)

[@JIMSSOUTHSTREET](https://www.instagram.com/jimssouthstreet) [#JIMSSOUTHSTREET](https://www.facebook.com/jimssouthstreet)

OPEN EVERY DAY 'TIL LATE

#EATLIKEALOCAL  
...24 HOURS A DAY

**GENO'S  
STEAKS**

PHILADELPHIA ORIGINAL

[WWW.GENOSSTEAKS.COM](http://WWW.GENOSSTEAKS.COM)

1219 SOUTH 9TH STREET  
SOUTH PHILADELPHIA

215.389.0659



**HERMAN'S COFFEE—Coffee.** This hip cafe housed inside an old repair shop pays homage to the proprietor's grandfather (Herman, of course) with single origins and blends made from beans roasted in-house. In addition to top-notch brews, find housemade syrups and Sunday brunch via food truck. B, L (daily), Br (Su). [www.hermanscoffee.com](http://www.hermanscoffee.com). 1313 S Third St., no phone. \$

**JIM'S SOUTH STREET—Cheesesteaks.** Since 1976, visitors and locals alike have been flocking to this temple to cheesesteak inside an Art Deco storefront on lively South Street. Hoagies, too. L, D (daily). [www.jimssouthstreet.com](http://www.jimssouthstreet.com). 400 South St., 215.928.1911. \$ Map 1, K7

**NINA'S TRATTORIA—Contemporary Italian.** This Italian-American supper club inside the Italian Market serves Sicilian family specialties, along with traditional and contemporary fare from regions including Abruzzo, Calabria and Tuscany. The feather-light gnocchi are among many must-tries on the menu. Cash only. D (Tu-Su). [www.ninatrattoria.com](http://www.ninatrattoria.com). 910 S. Ninth St., 267.713.9774. \$\$ Map 1, J8

**PAT'S KING OF STEAKS—Cheesesteaks.** Billed as the originator of the cheesesteak sandwich, this shop is a favorite that attracts fans from around the world. Local tip: Order "Whiz wit." B, L, D (daily 24 hours). [www.patskingofsteaks.com](http://www.patskingofsteaks.com). 1237 E. Passyunk Ave., 215.468.1546. \$ Map 3, E2

**SABRINA'S CAFE—American.** Cozy up in one of three locations of this family-owned neighborhood cafe, heralded for having one of the best brunches in town. BYOB. Hours vary by location. [www.sabrinascfe.com](http://www.sabrinascfe.com). 910-912 Christian St., 215.574.1599. Map 1, J8; Art Museum, 1804 Cal-lowhill St., 215.636.9061. Map 1, G3; University City, 34th and Powelton streets, 215.222.1022. \$\$

## South Street & Queen Village

**LAS BUGAMBILIAS—Mexican.** At this intimate, authentic Mexican restaurant, chef/owner Carlos Molina offers high-quality, freshly prepared food from three different regions in Mexico. Be sure to sample the imaginative array of margaritas and the homemade desserts. L (Tu-Su), D (daily), Br (Su). [www.lasbugambiliashilly.com](http://www.lasbugambiliashilly.com). 148 South St., 215.922.3190. \$\$ Map 1, L7

**THE TWISTED TAIL—American.** A lively bourbon-and-blues emporium featuring a menu of charcoal-grilled fare, 40-plus bourbons and plenty of craft beer. Dine at rustic wooden table indoors or out, then climb up the stairs for some rockin' live music. L (M-F), D (daily), Br (Sa-Su). [www.thetwistedtail.com](http://www.thetwistedtail.com). 509 S. Second St., 215.558.2471. \$\$ Map 1, K6

## University City

**MARIGOLD KITCHEN—American.** Located inside a traditional Victorian row house, this restaurant features the culinary alchemy of Andrew Kochan and Tim Lanza. Each build tasting menus meant to "surprise," with dishes drawing from the seasons, that are as beautiful to look at as they are tasty to eat. D (Tu-Sa). [www.marigoldkitchenbyob.com](http://www.marigoldkitchenbyob.com). 501 S. 45th St., 215.222.3699. \$\$ Map 1, A7

**VIETNAM CAFÉ—Vietnamese.** With this small but sleek outpost of Chinatown's popular Vietnam Restaurant, owner Benny Lai has brought his beloved Vietnamese cuisine to the University City neighborhood. Expect savory noodle soups and dishes, seafood, rice platters and the chef's special





barbecued appetizer sampler. L, D (daily). [www.eatatvietnam.com](http://www.eatatvietnam.com). 816 S. 47th St., 215.729.0260. \$\$

**WALNUT STREET CAFE—American.** The team behind New York City's Michelin-starred Rebele brings its winning formula to the banks of the Schuylkill with this venture. A sleek and airy two-level space opens up to several dining areas for all-day grazing, even grab-and-go options (pastries, Rival Bros. coffee). Dishes run the gamut from a cheeseburger to lasagna and porterhouse steak for two, laced with a Bordelaise sauce. The eclectic 130-bottle wine list also pours more than 40 by the glass. B, L (M-F), D (daily), Br (Sa-Su). [www.walnutstreetcafe.com](http://www.walnutstreetcafe.com). 2929 Walnut St., 215.867.8067. \$\$ Map 1, E5

**WHITE DOG CAFE—American.** This homey, antiques-filled dining room is as well known for its food as it is for its social activism. Dine on classic dishes made from locally grown and organic ingredients, like chicken liver mousse, soups and sandwiches, and omelets made with cage-free eggs. L (M-F), D (daily), Br (Sa-Su). [www.whitedog.com](http://www.whitedog.com). 3420 Sansom St., 215.386.9224. \$-\$\$ Map 1, D5

## Washington Square

**AMIS—Italian.** At this convivial trattoria (one of three Philadelphia eateries by celebrated Chef Marc Vetri), dig into tapas-style fare like bone-in strip steak, pork chop parmigiana and monkfish cacciatore. D (daily), Br (Su). [www.amisphilly.com](http://www.amisphilly.com). 412 S. 13th St., 215.732.2647. \$\$\$ Map 1, I6

**EL FUEGO—Mexican.** This happening spot whips up tasty "California-style" burritos, along with tacos, quesadillas and soups. The lunch hour is particularly lively, so get there early. L, D (M-Sa). [www.elfuegophilly.com](http://www.elfuegophilly.com). 723 Walnut St., 215.592.1931. \$ Map 1, J5

**RISTORANTE AROMA—Italian.** This cozy BYOB offers a taste of Italy, from the north to the south. Chef duo Antonio Cardillo and Gianluca Forastiere whip up hand-made pastas, cheeses, bread and desserts, plus entrees like grilled lamb chops and veal medallions redolent with garlic and herbs. Don't miss themed nights like "Nonna's Sunday Dinner" and "Tapas Tuesdays." D (daily). [www.ristorantearomaphilly.com](http://www.ristorantearomaphilly.com). 1120 Pine St., 267.314.5315. \$\$\$ Map 1, I6

**TALULA'S DAILY—American.** Located across the street from leafy Washington Square, Aimee Olexy's casual counterpoint to Talula's Garden combines a bustling market carrying "real, wholesome" fare and a charming sit-down restaurant serving a seasonal, five-course set-price menu. Reservations are a must for the in-demand eatery, so book well in advance. Market: B, L, D (daily). Restaurant: D (Tu-Su, one seating only). [www.talulasdaily.com](http://www.talulasdaily.com). 208 W. Washington Square, 215.592.6555. \$\$-\$\$\$ Map 1, J6

**VEDGE—Vegan.** Husband-and-wife team Richard Landau and Kate Jacoby give vegan cuisine a good name at their inventive, modern bistro inside a handsome row house. In the chef's deft hands, roots and leaves become the stuff of haute cuisine in dishes like "seared maitake mushroom" with celery root fritter, smoked remoulade and leek ash vinaigrette. Cocktails with housemade syrups and bitters are also musts. Reservations required. D (M-Sa). [www.vedgerestaurant.com](http://www.vedgerestaurant.com). 1221 Locust St., 215.320.7500. \$\$\$ Map 1, I6

**READING TERMINAL MARKET** 12th & Arch Streets Philadelphia, PA 19107

**125 YEARS** 1892 2018

**SHOP LOCAL**  
A PHILADELPHIA TRADITION

Discover the diversity of fresh and prepared foods available at the Market. From Amish made breakfasts to international cuisines- we've got something for everyone's appetite.

Diverse. Charming. Inspiring. Delicious.  
Shop Reading Terminal Market. All under one roof.

Open Every Day from 8 AM - 6 PM  
215-922-2317 • [ReadingTerminalMarket.org](http://ReadingTerminalMarket.org)

[f](#) [i](#) [t](#) [RdgTerminalMkt](#) [#LoveRTM](#) [#RTMeat](#)

**WE'RE PACKIN' HEAT.**

**GENO'S GEAR**  
RIGHT ACROSS THE STREET AT 9TH & PASSYUNK

**GENO'S STEAKS**

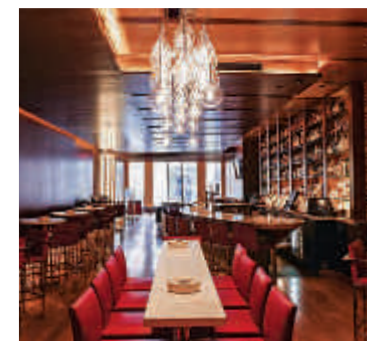


# Entertainment | September



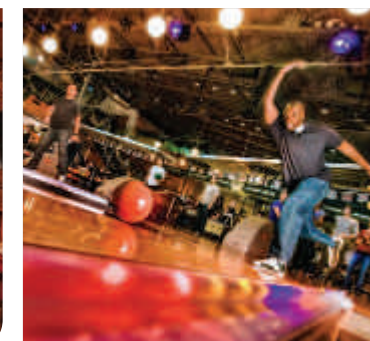
## Johnny Brenda's

Locally and nationally renowned indie rock bands perform almost every night at this hipster hangout located in the up-and-coming Fishtown neighborhood. Musicians rock out upstairs, while downstairs, a tavern serves upscale pub grub. [www.johnnybrendas.com](http://www.johnnybrendas.com). 1201 N. Frankford Ave., 215.739.9684 Map 1, L7



## Ashton Cigar Bar

Enjoy the vast selection of 200 different cigars and an extensive bar list including wines, cordials and rare liqueurs at the only cigar bar open to the public in the city, complete with a state-of-the-art air purification system. Sa-Th 4 pm-2 am, F 2 pm-2 am. [www.ashtoncigarbar.com](http://www.ashtoncigarbar.com). 1522 Walnut St., 2nd floor, 267.350.0000. Map 1, H6



## North Bowl Lounge 'N Lanes

Northern Liberties catches onto the contemporary bowling craze with this retro-style spot. Bowl downstairs in the Pop-modern room and then relax post pins with a drink in the second-floor lounge. North Bowl also offers billiards and classic arcade games. [www.northbowlphilly.com](http://www.northbowlphilly.com). 909 N. Second St., 215.238.2695. Map 1, K1

## Arcade & Billiards

**ARNOLD'S FAMILY FUN CENTER**—One of the largest indoor fun centers in the United States features electric go-karts, bumper cars, crazy cars, a bounce zone, laser tag, black-light mini golf and bowling lanes. Cafe, bistro and bar. Hours vary by season. [www.arnoldsfcc.com](http://www.arnoldsfcc.com). 2200 West Drive, Oaks, Pa, 610.666.0600.

**BARCADE**—As the name suggests, this cavernous space in Fishtown ingeniously combines a bar with an arcade, serving a stellar selection of craft beer to lovers of old-school games like Donkey Kong, Ms. Pacman and Space Invaders, which are all just \$.25 a game. Must be 21 or older to enter. M-Su noon-2 am. [www.barcadephiladelphia.com](http://www.barcadephiladelphia.com). 1114 Frankford Ave., 215.634.4400.

**BUFFALO BILLIARDS**—Kick back at this casual Old City spot and enjoy happy hour specials as you chill out in one of the leather banquettes. For relaxation with a competitive edge, shoot pool at one of eight tables or choose from darts, shuffle board, Skee-Ball or foosball. M-F 4 pm-2 am, Sa-Su 2 pm-2 am. [www.buffalobilliards.com](http://www.buffalobilliards.com). 118 Chestnut St., 215.574.7665. Map 1, K5

**DAVE & BUSTER'S**—Popular with kids and grown-ups alike, this lively spot has more than 200 interactive and video games, plus several HD televisions. Whether you stop by for happy hour and billiards or stay to game all night, this mega-arcade is sure to bring the fun. Su-Th 11:30 am-midnight, F-Sa 11:30 am-2 am. [www.daveandbusters.com](http://www.daveandbusters.com).

325 N. Columbus Blvd., 215.413.1951.  
Map 1, L3; 1995 Franklin Mills Circle,  
215.632.0333

## Bars & Lounges

**ABBAYE**—Locals will greet you with open arms in this homey Northern Liberties corner bar. Come for the music, cheesesteaks and fine Belgian beer. M-F 11:30 am-2 am, Sa-Su 10 am-2 am. [www.theabbaye.net](http://www.theabbaye.net). 637 N. Third St., 215.627.6711. Map 1, K2

**BARBARY**—Dance the night away with great DJs, cheap drinks and disco lights, or take a break from all the action in the bar's cozy photo booth. Daily 10 pm-2 am. <http://www.barbarylives.com/>. 951 Frankford Ave., 215.634.7400. Map 1, L1

**THE BARDS**—A purist's Irish pub that encourages pints of Guinness and a shot of Tullamore Dew, this Center City tavern is an ideal spot to wind down. M-F noon-2 am, Sa-Su 10 am-2 am. [www.bardsirishbar.com](http://www.bardsirishbar.com). 2013 Walnut St., 215.569.9585. Map 1, G5

**BRIDGEWATER'S PUB**—Located in historic 30th Street Station, this Irish/English-style pub pours draughts from around the world alongside local microbrews. The kitchen serves a full menu with constantly changing specials. M-Sa 11:30 am-midnight, Su 11:30 am-10 pm. [www.thepubin30thstreetstation.com](http://www.thepubin30thstreetstation.com). 30th Street Station, 215.387.4787.

There's a lot more going on this September. Visit us online: [wheretraveler.com](http://wheretraveler.com)

**CONSHOHOCKEN BREWING COMPANY**—This brewpub in the Main Line features 10 taps and one cask line. Grab a pint of the core brew, Conshohocken IPA, while munching on affordable bar snacks. M-W 4-10 pm, Th 3-10 pm, F 2 pm-midnight, Sa 11 am-midnight, Su 11 am-8 pm. [www.conshohockenbrewing.com](http://www.conshohockenbrewing.com). 739 East Elm St., Suite B, Conshohocken, 610.897.8962.

**FADO IRISH PUB**—This comfortable pub offers an escape to Victorian-era Dublin with nooks that seat from two to 12 people, plus fine Irish and European beers, a packed dance floor on the weekend and regular screenings of soccer matches. M-F 11:30 am-2 am. Open time varies on weekends for matches; Sa until 2 am, Su until midnight. [www.fadoirishpub.com/philadelphia](http://www.fadoirishpub.com/philadelphia). 1500 Locust St., 215.893.9700. Map 1, H6

**THE FRANKLIN BAR**—Venture into this subterranean speakeasy located inside the former Franklin Mortgage & Investment Co. (a front for one of the largest booze running rings during Prohibition) for carefully crafted cocktails mixed with premium, seasonal and homemade ingredients. Daily 5 pm-2 am. [www.thefranklinbar.com](http://www.thefranklinbar.com). 112 S. 18th St., 267.467.3277.

**THE GASLIGHT**—This casual, comfortable bar and restaurant is located in Philadelphia's historic district, serving a sophisticated take on pub grub. Look for happy hour specials during the week and a tasty brunch (and live entertainment) on week-

(FROM LEFT) ©RYAN COLLIER; COURTESY ASHTON CIGAR BAR; COURTESY NORTH BOWL LOUNGE 'N LANES





## THE GUIDE

ends. Extensive beer list. M-Th 4 pm-midnight, F 4 pm-2 am, Sa 10-2 am, Su 10 am-midnight. [www.theglaslightphilly.com](http://www.theglaslightphilly.com). 120 Market St., 215.925.7691. **\$\$ Map 1, K5**

**GRACE TAVERN**—This low-key neighborhood spot offers comfort foods like burgers, sandwiches and bar snacks (think chicken fingers), plus some vegan options. The beer list is wide with several ciders and sour ales, too. Daily 11:30 am-2 am. [www.gracetavern.com](http://www.gracetavern.com). 2229 Grays Ferry Ave., 215.893.9580. **Map F7**

**GRAFFITI BAR**—True to its name, this fun-loving covered patio features the spray-paint art of local Philadelphians. Located behind the stylish Asian-fusion restaurant, Sampan, it also serves the same acclaimed food. Get there by slipping down the graffiti side alley. M-Tu 4 pm-10 pm, W-Th 4 pm-11 pm, F-Sa 4 pm-midnight, Su 4 pm-9 pm. [www.sampanphilly.com](http://www.sampanphilly.com). 124 S. 13th St., 215.732.3501. **Map 1, I5**

**THE RANSTEAD ROOM**—Hidden off a side street adjacent to restaurant El Rey, this dimly lit enclave serves libations minted at the turn of the century in true speakeasy style. Look for the “RR” on the door. Daily 6 pm-2 am. 2013 Ranstead St., 215.563.3330. **Map 1, G5**


**STRATUS ROOFTOP LOUNGE**—This sophisticated open-air social space on roof of Hotel Monaco, one of only a few in the city, is the place to be in Philadelphia for cocktails and a twist on history. Sip on top shelf drinks beneath a maple that sways in the breeze of the 11th floor, and warm up by its 30-foot-long fireplace. The lounge rises above Independence Mall, and views include the Independence Hall, Washington Square, Liberty Bell Visitor Center and endless scenes of the Philadelphia skyline. Tu 5-10 pm, W-Th 5 pm-midnight, F 2 am, Sa 7 pm-2 am. [www.stratuslounge.com](http://www.stratuslounge.com). 433 Chestnut St., 11th floor, 215.925.2889. **Map 1, K5**

**TIKI**—Hang 10 at this fun bar channeling Polynesian tiki and California surf rock. With two levels, there's plenty of space to chill, from the bar and open kitchen on the ground floor to the roof deck. M-Sa 5 pm-2 am, Su 1 pm-11 pm. [www.tikiphilly.com](http://www.tikiphilly.com). 102 S. 13th St., 215.309.3435. **Map 1, H5**

**TIRNA NOG**—This lively spot brings Ireland to Philly with an ambience that evokes the Emerald Isle. Join locals for happy hour and watch European football on the big-screen, while sipping expertly poured Guinness, naturally. M-F 11 am-2 am, Sa-Su 8 am-2 am. [www.tirnanogphilly.com](http://www.tirnanogphilly.com). 1600 Arch St., 267.514.1700. **Map 1, H4**

**THE TRESTLE INN**—Enjoy a night of classic cocktails, 60 domestic and international whiskeys and retro bar snacks. Then maybe strut your stuff with go-go dancers, who shake it to everything from soul and funk to classic disco. W-Th 5 pm-1 am, F-Sa 5 pm-2 am. [www.thetrestleinn.com](http://www.thetrestleinn.com). 339 N. 11th St., 267.239.0290. **Map 1, I3**

**VESPER**—The formerly private Vesper Club has reopened as a restaurant and lounge with a speakeasy vibe, serving up toasts, tastes and steak dinners. At the bar, classic cocktails are on the menu, from the negroni to the French 75. Live and local music command attention seven nights a week in the Skyline Room. M-F 3:30 pm-2 am, Sa 5 pm-2 am. [www.vesperphilly.com](http://www.vesperphilly.com). 223 Sydenham St., 267.603.2468. **Map 1, H5**



Specializing in California-style burritos featuring fresh ingredients in sumptuous portions at affordable prices.

Lunch and Dinner  
BYOB

# el fuego

723 Walnut Street • 215.592.1931  
[Facebook.com/elfuegoburritosp Philly](https://www.facebook.com/elfuegoburritosp Philly)  
[www.elfuegophilly.com](http://www.elfuegophilly.com)



where  
powered by  
morris digital

Extend your print  
into digital



INTERNET MARKETING  
LISTING MANAGEMENT  
RESPONSIVE WEB DESIGN  
SOCIAL MEDIA MARKETING  
SEARCH ENGINE MARKETING  
REPUTATION MANAGEMENT

866.688.8213  
[morrisdigital.com](http://morrisdigital.com)



## It's SailTime in Philly

LEARN TO SAIL | CAPTAINED CHARTERS  
SEASON-LONG MEMBERSHIPS

*An amazing experience awaits you –*  
whether you hop on board for a chartered sunset cruise, fulfill your dream to learn how to sail or choose a membership which allows you to skipper a boat on your own – you'll experience the city in a way that you won't find anywhere else!

**CHARTERS** are led by a USCG licensed Captain on fully insured, late-model sail boats that are fully optimized with the newest gear and safety equipment.

Docked at:  
Penn's Landing Marina  
301 S. Christopher Columbus Blvd.  
Philadelphia PA 19106  
May through October

SailTime Philadelphia  
@SailTimePhilly

866-724-5101  
[philadelphia@sailtime.com](mailto:philadelphia@sailtime.com)  
<http://www.sailtime.com/philadelphia>




# BIG BANDS & BIG HITS

Rock out to the hottest acts at the new Xcite Center.  
Try your luck at any one of our 3,300 slots.  
You'll have a night to remember at Parx.  
**The best is better than ever.**  
[parxcasino.com](http://parxcasino.com)

parx  
casino  
What a night!

Street Road Exit off I-95 or PA Turnpike  
GAMBLING PROBLEM? CALL 1.800.GAMBLER





**THE VICTORIA FREEHOUSE**—This authentic British pub brings London to Philly with craft beers, ciders and cask ales imported from the UK. Pair your pint with traditional pub favorites like bangers and mash and sticky toffee pudding. M-Th noon-midnight, F-Sa noon-2 am, Su 11 am-midnight. [www.victoriafreehouse.com](http://www.victoriafreehouse.com). 10 S. Front St., 215.543.6089. **Map 1, J5**

**VINTAGE**—This gorgeous Midtown Village wine bar has an impressive list of reds, whites and everything in between. It's *vino* without the pretension. M-F 4 pm-2 am, Sa-Su noon-2 am. [www.vintage-philadelphia.com](http://www.vintage-philadelphia.com). 129 S. 13th St., 215.922.3095. **Map 1, I5**

**X LOUNGE**—This ultramodern spot is the jewel of the major expansion at sprawling Park Casino in Bucks County. Cushy seating, luxury finishes and additional gaming opportunities occupy the airy space. Have a signature cocktail like the Amigas Paloma and a few of the small plates (think edamame truffle potato dumplings or fish tacos) before you head back to the tables. Th 4-10 pm, F 4 pm-2 am, Sa 2 pm-2 am, Su noon-9 pm. [www.parcasino.com/xlounge](http://www.parcasino.com/xlounge). 2999 Street Road, Bensalem, Pa., 888.588.7279. **Map 4, C3**

## Casinos

**PARX CASINO**—Located about 20 miles north of Center City by way of Interstate 95 or the Pennsylvania Turnpike, Parx is worth the trip. This 150,000-sq.-ft. venue boasts 3,330 slot machines,

132 live table games, a 48-table poker room and a variety of restaurants and bars, plus thoroughbred horse racing at Parx Racing and a new 1,500-seat entertainment venue called Xcite Center. Complimentary parking. Daily 24 hours. [www.parcasino.com](http://www.parcasino.com). 2999 Street Road, Bensalem, Pa., 888.588.7279. **Map 4, C3**

**SUGARHOUSE CASINO**—Wager on having a fantastic time at this 45,000-square-foot casino on the Delaware River waterfront in the Fishtown neighborhood. The huge gaming floor offers slots, as well as live table games such as craps, blackjack and poker. On-site dining, free parking and valet available. Daily 24 hours. [www.sugarhousecasino.com](http://www.sugarhousecasino.com). 1001 N. Delaware Ave., 877.477.3715. **Map 1, L1**

**VALLEY FORGE CASINO**—This casino about 30 minutes beyond Philly city limits boasts more than 600 slot machines, along with 50 table games, including blackjack, craps and roulette. On-site dining and nightlife options range from fine steak at Revolution Chop House to live entertainment at The Vault. Accessible from Routes 202, Interstate 76 and the Pennsylvania Turnpike. Daily 24 hours. [www.vfcasino.com](http://www.vfcasino.com). 1160 First Ave., King of Prussia, Pa., 610.354.8118.

## Classical & Opera

**OPERA PHILADELPHIA**—Philly's premier opera company stages a full season of opulent productions. Not only does this company present

classics with rich precision, but it also produces new and innovative operas. This month: '018 Festival with "Lucia di Lammermoor," "Sky on Swings," "Ne Quittez Pas: A Reimagined la voix humaine," "Glass Handel," "Queens of the Night" **September 20-30**. [www.operaphila.org](http://www.operaphila.org). Academy of Music, Broad and Locust streets, 215.893.1999. **Map 1, H6**

**THE PHILADELPHIA ORCHESTRA**—Founded in 1900, the Philadelphia Orchestra has distinguished itself as one of the leading orchestras in the world, and is led by dynamic music director Yannick Nézet-Séguin. This month: Opening Night, **September 13**; Opening Weekend, **September 14-16**; Tchaikovsky Violin Concerto, **September 20-22, 29**. [www.philorch.org](http://www.philorch.org). Kimmel Center for the Performing Arts, 300 S. Broad St., 215.893.1999. **Map 1, H6**

**THE PHILLY POPPS**—Michael Krajewski leads one of America's premier pops orchestras through a repertoire of classical, swing, Broadway, blues and jazz. This month: Sixth Annual Pops Ball, **September 13**; Leslie Odom Jr., **September 28-30**. [www.phillypops.org](http://www.phillypops.org). Kimmel Center for the Performing Arts, 300 S. Broad St., 215.893.1999. **Map 1, H6**

## Comedy

**COMEDYSPORTZ**—For more than 25 years, this improvisational comedy troupe has been earning raves along with laughs. Two teams of funny guys and gals compete for points with a referee calling

the action. Audience participation is encouraged. Arrive early, as seating is limited. \$20, \$15 students, seniors and military. Sa 7:30 pm and 10 pm. [www.comedysportzphilly.com](http://www.comedysportzphilly.com). 2030 Sansom St., 484.450.8089. **Map 1, G5**

**HELIUM COMEDY CLUB**—Local talent and national headliners take the stage at this club, just off Rittenhouse Square. This month: Arnez J, **September 1-2**; Dave Attell, **September 6-9**; Josh Wolf, **September 13-15**; Lavell Crawford, **September 20-23**; Adam Ferrara, **September 27-30**. [www.heliumcomedy.com](http://www.heliumcomedy.com). 2031 Sansom St., 215.496.9001. **Map 1, G5**

**KIMMEL CENTER FOR THE PERFORMING ARTS**—This elegant entertainment complex houses multiple stages in the hub of Philadelphia's Avenue of the Arts. This month: Hasan Minhaj: Before the Storm, **September 23**. [www.kimmelcenter.org](http://www.kimmelcenter.org). 300 S. Broad Street, 215.670.2300. **Map 1, H6**

**PUNCH LINE PHILLY**—A part of the thriving entertainment scene in Fishtown, this comedy club, restaurant and bar will send you laughing all the way home with new performances each week. The 300-seat venue features VIP seating and an outdoor patio. The bar offers local craft beers, cocktails and wines by the glass. This month: Jamie Kennedy, **September 6-8**; Chad Daniels, **September 13-15**; Robert Kelly **September 21-22**. [www.punchlinephilly.com](http://www.punchlinephilly.com). 33 E. Laurel St., 215.606.6555.

**THE N CROWD**—This short-form improvisational comedy group performs an 80-minute show at 7 pm every Friday. A frequent participant in regional festivals, the N Crowd is known for its originality and humor. \$12 in advance, \$15 at the door. [www.phillyncrowd.com](http://www.phillyncrowd.com). 2030 Sansom St., 215.253.4276. **Map 1, K3**

## Concert Venues

**BB&T PAVILION**—This amphitheater-style venue on the Camden, New Jersey, waterfront plays host to large concerts by the nation's most popular artists. This month: Deep Purple and Judas Priest, **September 9**; Niall Horan, **September 11**; Ozzy Osbourne, **September 12**; Outlaw Music Festival, **September 15**; Lady Antebellum and Darius Rucker, **September 21**. [www.waterfrontamphitheater.com](http://www.waterfrontamphitheater.com). 1 Harbour Blvd., Camden, NJ, 800.745.3000. **Map 1, M6**

**ELECTRIC FACTORY**—Big-name and up-and-coming acts appear at this cavernous, mostly standing-room venue with a busy calendar. Ticket prices and show times vary. This month: Seether, **September 15**; ZHU, **September 25**; Social Distortion, **September 28**; Lost 80's Live, **September 29**. [www.electricfactory.info](http://www.electricfactory.info). 421 N. Seventh St., 215.627.1332. **Map 1, J3**

**FESTIVAL PIER**—This outdoor venue at Penn's Landing offers beautiful views and a fantastic place to see concerts and events in warm weather. This month: Phil Lesh and the Terrapin Family Band, **September 9**; James Bay, **September 25**. [www.festivalpierphilly.com](http://www.festivalpierphilly.com). Columbus Boulevard and Spring Garden Street, 215.629.3200. **Map 1, L2**

**THE FILLMORE PHILADELPHIA**—Fishtown's legendary Ajax Metal Factory has been transformed into a state-of-the-art 2,500 capacity venue, honoring the traditions of historic Fillmore music halls and weaving in some Philly flavor. On the top floor, The Foundry serves as a smaller venue where local

bands and DJs take the stage. This month's highlights: First Aid Kit, **September 8**; War on The Catwalk, **September 13**; Shakey Graves, **September 18**; Sting and Shaggy, **September 20**; Residente, **September 21**; Blood Orange, **September 27**; 88rising, **September 28**; Ben Rector, **September 29**; Leon Bridges, **September 30**. [www.thefillmorephilly.com](http://www.thefillmorephilly.com). 29 E. Allen St., 215.309.0150. **Map 1, L1**

## Gay & Lesbian Clubs

**KNOCK RESTAURANT AND BAR**—Known for its friendly scene and inspired cuisine, Knock draws a sophisticated gay clientele of all ages. Daily happy hour is 5 pm-7 pm. Daily 11 am-2 am. [www.knockphilly.com](http://www.knockphilly.com). 225 S. 12th St., 215.925.1166. **Map 1, I6**

**THE BIKE STOP**—This longtime club offers four levels with different themes, like the Short Stop for sports fans with games on TV and the Pit Stop for leather fans. Other floors host dancing and cruising. M-Sa 4 pm-2 am, Su 2 pm-2 am. [www.thebikestop.com](http://www.thebikestop.com). 206 S. Quince St., 215.627.1662. **Map 1, I6**

**U BAR**—With its large oval bar and mirrored walls, this Gayborhood institution regularly draws a lively crowd. Relax with a no-frills brew and some juke box tunes. Daily 11 am-2 am. [www.ubarphilly.com](http://www.ubarphilly.com). 1220 Locust St., 215.546.6660. **Map 1, I6**

## Gentlemen's Club

**DELILAH'S**—"America's #1 Gentlemen's Club" features "The World's Most Beautiful Showgirls." Find a complimentary after-work buffet, happy-hour specials and free cover with hotel room key or game-day ticket stub. Free parking. M-Sa 11:30 am-2 am, Su 1 pm-2 am. [www.delilahs.com](http://www.delilahs.com). 100 Spring Garden St., 215.625.2800. **Map 1, L2**

## Live Music Clubs

**CHRIS' JAZZ CAFE**—Live jazz featuring great local and big-name talent, plus a full dinner menu. Check website for full schedule of events. M-F 11 am-2 am, Sa 6 pm-2 am. This Month: [www.chrisjazzcafe.com](http://www.chrisjazzcafe.com). 1421 Sansom St., 215.568.3131. **Map 1, H5**

**THE CLEF CLUB OF JAZZ AND THE PERFORMING ARTS**—This four-story building, affectionately referred to as "The House That Jazz Built," was formed by a music union in the mid-20th century and has been the hangout of such famous members as John Coltrane, Nina Simone and Ella Fitzgerald. It has a large concert hall and boasts an elegant bar on the second floor, which overlooks a stage and tables. This month: Sumi Tonooka Trio, **September 15**. [www.clefclubofjazz.org](http://www.clefclubofjazz.org). 738 S. Broad St., 215.893.9912. **Map 1, H7**

**TIME**—This groovy three-in-one venue features a chandeliered lounge with live jazz, a cozy whiskey bar and a second-floor dance club reminiscent of absinthe-fueled hangouts of old Paris. "Trombo Piccolo with Chris Farrell & Co.," every Monday; open mic on Tuesdays; and "Midtown Jazz Jam with the Tim Brey Trio," every Sunday. Daily 5 pm-2 am. [www.timerestaurant.net](http://www.timerestaurant.net). 1315 Sansom St., 215.985.4800. **Map 1, H5**

**WARMDADDY'S**—This South Philly blues and jazz club offers a casual, relaxed atmosphere, live entertainment nightly and classic southern cuisine. Tu-Th 5 pm-11 pm, F till midnight, Sa 1 pm-midnight, Su 10:30 am-3 pm and 4-11 pm. [www.warmdaddys.com](http://www.warmdaddys.com). 1400 S. Columbus Blvd., 215.462.2000. **Map 3, G2**

## Nightclubs

**BLEU MARTINI**—Specializing in more than 30 different martinis, this swanky bar is located in the heart of Old City's bustling nightlife strip. Daily 4 pm-2 am. [www.bleumartiniphilly.com](http://www.bleumartiniphilly.com). 24 S. Second St., 215.940.7900. **Map 1, K5**

**RUMOR**—Put on your dancing shoes—stilettos preferred—to hit this popular Center City nightclub. Two large dance floors, multiple sound systems, a private VIP vault and multiple bars. Th-Sa 10 pm-2 am. [www.rumorphilly.com](http://www.rumorphilly.com). 1500 Sansom St., 215.988.0777. **Map 1, H5**

**VANGO**—This hip nightclub is where Philly's young and stylish set get their fix of pulsing dance music and cool cocktails. Enjoy a drink at the skybar upstairs, where club-goers gather on warm summer evenings for drinks and conversation. Daily 5 pm-2 am. [www.vangoloungeandskybar.com](http://www.vangoloungeandskybar.com). 116 S. 18th St., 215.568.1020. **Map 1, G5**

**ZEE BAR**—A spacious-yet-intimate members-only club that takes the concept into a stratosphere of unprecedented luxury. Members enjoy extended hours, VIP spaces, bottle service and more. W-Sa, 10 pm-3 am. [www.zee-bar.com](http://www.zee-bar.com). 100 Spring Garden St., 215.922.2994. **Map 1, L2**

## Theater

**BRISTOL RIVERSIDE THEATRE**—Founded in 1984, Bristol Riverside Theatre is a state-of-the-art, riverfront theater in the Philadelphia countryside of Bucks County. This month: "Erma Bombeck: At Wit's End," **September 18-30**. [www.brtstage.org](http://www.brtstage.org). 120 Radcliffe St., Bristol, Pa., 215.785.0100.

**FRINGEARTS**—Housed within a vintage 1903 pumping station beneath the Benjamin Franklin Bridge, FringeArts features a 240-seat theater, outdoor plaza and restaurant La Peg, which serves up a casual brasserie-style menu. Expect world-class international artists and cutting-edge performances. "Fringe Festival," **September 6-23**. [www.fringearts.com](http://www.fringearts.com). 140 N. Columbus Blvd., 215.413.9006. **Map 1, L4**

**HEDGEROW THEATRE**—This theater located in the suburbs of Philadelphia offers a mix of traditional and experimental repertory productions, in addition to collaborations with other theaters. This month: "Dishman Springs," **September 13-30**. [www.hedgerowtheatre.org](http://www.hedgerowtheatre.org). 64 W. Rose Valley Road, Rose Valley, Pa., 610.565.4211.

**LANTERN THEATER COMPANY**—The Lantern's productions evoke thoughtful discussion long after the plays have ended. This month: "Hapgood," **September 6-30**. [www.lanterntheater.org](http://www.lanterntheater.org). St. Stephen's Theater, 10th and Ludlow streets, 215.829.0395. **Map 1, I5**

**PAINTED BRIDE ART CENTER**—This funky, interdisciplinary Old City venue features experimental theater, dance, music and visual arts by cutting-edge artists. This month: "5th and South: The Robert Smalls Story," **September 7-30**. [www.paintedbride.org](http://www.paintedbride.org). 230 Vine St., 215.925.9914. **Map K3**

**WALNUT STREET THEATRE**—America's oldest continuously operating theater has been bringing classics to life on stage since 1809. This month on the Mainstage: Irving Berlin's "Holiday Inn," **September 4-30**. Independence Studio: "In Between," **September 25-October 28**. [www.walnutstreettheatre.org](http://www.walnutstreettheatre.org). 825 Walnut St., 215.574.3550. **Map 1, J5**



**EVERY SUNDAY & MONDAY DURING FOOTBALL SEASON**

**Heineken** HEINEKEN, HEINEKEN LIGHT & AMSTEL LIGHT SPECIALS

**Heineken LIGHT** **AMSTEL**

**PLUS A SPECIAL TAILGATE MENU**

**THURSDAY NIGHTS YUENGLING LIGHT SPECIALS**

**FREE ADMISSION WITH A GAMEDAY TICKET STUB OR YOUR HOTEL KEY**

**DELILAH'S**

**THE GENTLEMEN'S CLUB & STEAKHOUSE**

100 SPRING GARDEN STREET • PHILADELPHIA, PA • 215.625.2800  
FREE PARKING • FULL MENU/LATE NIGHT DINING • [WWW.DELILAHS.COM](http://WWW.DELILAHS.COM)

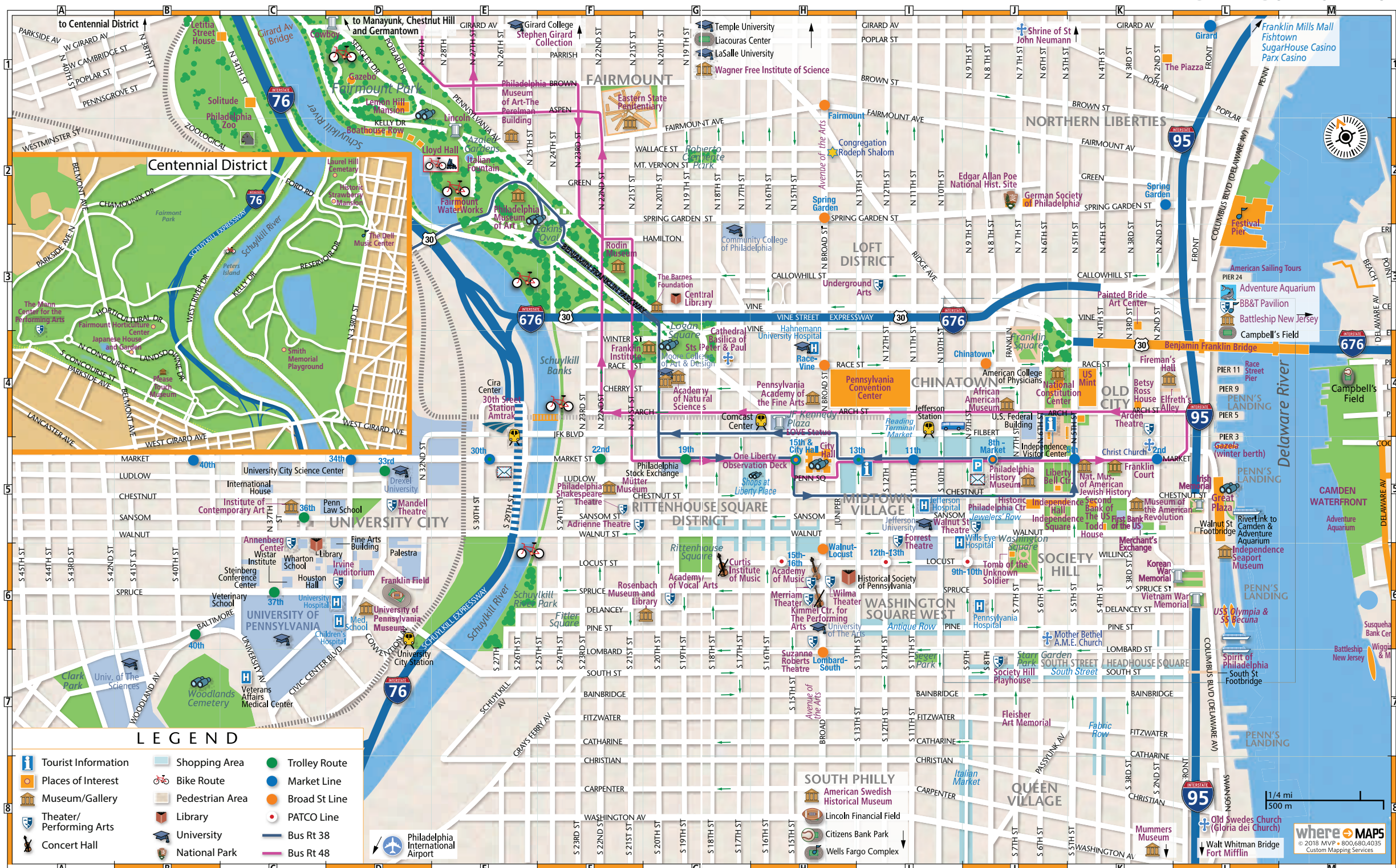






MAP 1 PHILADELPHIA DOWNTOWN WEST

PHILADELPHIA DOWNTOWN EAST



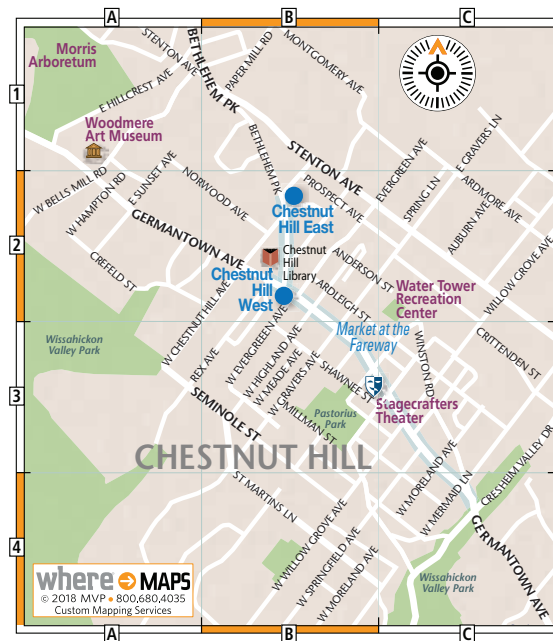




MAP 2 PHILADELPHIA HISTORIC AREA



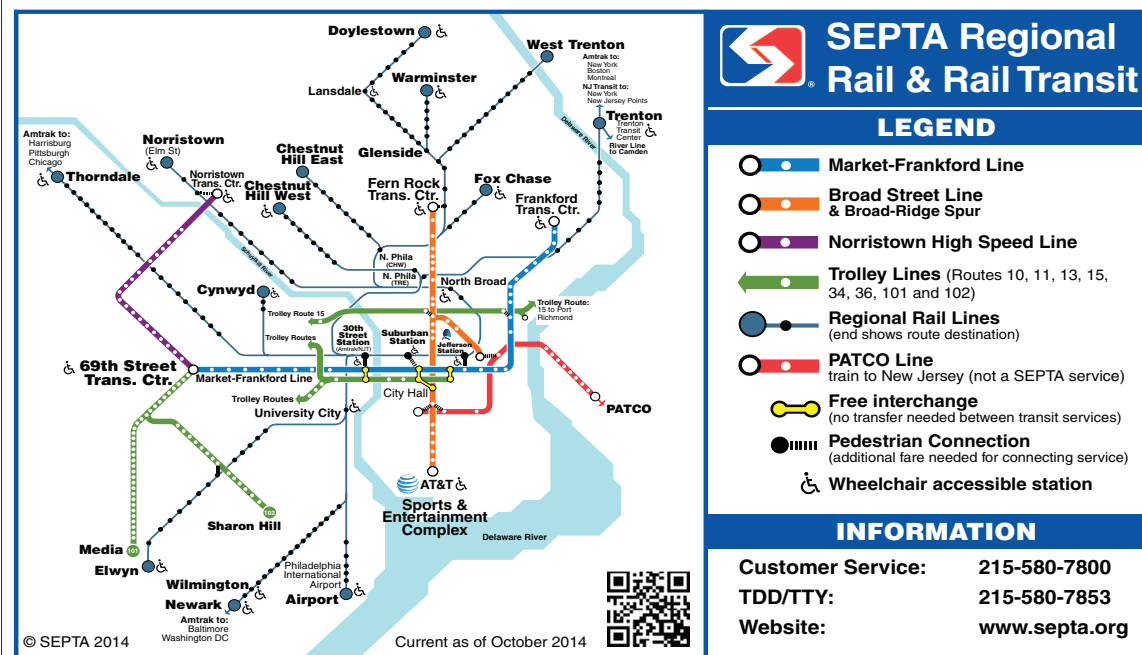
MAP 3 PHILADELPHIA CHESTNUT HILL



MAP 4 PHILADELPHIA METRO MAP



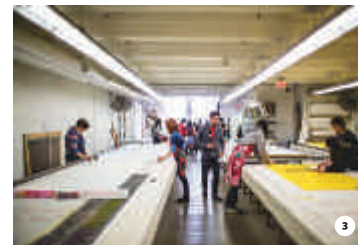
MAP 5 PHILADELPHIA SEPTA





# [WHERE INSIDE] Philadelphia Your Way

UNIQUE TRAVEL RECOMMENDATIONS, FIT TO MATCH YOUR PERSONAL STYLE.  
FIND THE CITY CURATED FOR YOU AT [WHERETRAVELER.COM/PHILADELPHIA](http://WHERETRAVELER.COM/PHILADELPHIA).



## LGBTQ Crowd

Get cheeky with a scoop of ice cream at (1) **Big Gay Ice Cream**. With a wide array of colorful flavors such as "The Salty Pimp" with vanilla, sea salt and Dulce de leche, along with toppings galore to choose from, you'll be glad you stopped in. Stroll into (2) **Open House**, sitting in the center of the Gayborhood, to find that special something to take home or gift to a friend. Their inventory is full of Philly-themed décor, unique home items and even jewelry and apparel; there's something for everyone. As one of the most popular gay nightclubs in the city, (3) **Woody's** is a go-to spot for locals and visitors alike. They are open every night of the week and often offer fun and innovative theme nights, so check the calendar before you go!

## Sports Lovers

An easy ride on the subway from Center City lands you at (1) **Lincoln Financial Field**, the South Philly arena that the Philadelphia Eagles call home. Check the game schedule before your visit and be prepared for endless concessions and over 68,000 seats filled with fans. Craft beer and pub food make (2) **Field House** a sports lovers dream. Choose from 40 different local brews and never worry about finding a seat near a TV—the bar houses over 35 HDTV's. But sports fans don't have to be limited to bars and arenas. Head to (3) **The Franklin Institute**, where a full exhibit is dedicated to athletics. Discover how sports connect with the human body through games that test your skills (think pitching, jumping, surfing and running). Plus, this exhibit is great for all ages and activity levels.

## The Ladies

Stroll through (1) **Rittenhouse Row**, the stretch from Broad Street to 21st Street between Spruce and Market streets, for the ultimate retail experience. Find shops like Club Monaco, Intermix and Free People and local favorites like Joan Shepp and Knit Wit. Tons of restaurants, coffee shops and cocktail bars are also found here. After a day of shopping, make your way to (2) **Stratus Lounge** for a classy end to your evening. Located on the top of the Hotel Monaco in historic Old City, this lounge and bar offers craft cocktails and bar bites with some of the best views of the city. For daytime fun, (3) **The Fabric Workshop & Museum** puts a new spin on an art museum, featuring different materials and new media to create sculptures, installations, video, paintings and ceramics.

(FROM TOP TO BOTTOM, LEFT TO RIGHT) ©GUAN BOLISAY/FUCKR, CC; ©C. GABELLO/VISIT PHILLY; ©R. KENNEDY/VISIT PHILLY; ©M. FISCHETTI/VISIT PHILLY; ©R. KENNEDY/VISIT PHILLY; ©NOAH FECKS; ©N. SANTOS/VISIT PHILLY; ©K. CIAPPA/VISIT PHILLY; ©R. KENNEDY/VISIT PHILLY; ©NOAH FECKS; ©N. SANTOS/VISIT PHILLY



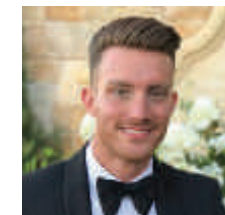
Kurfiss

Sotheby's  
INTERNATIONAL REALTY

Jason Kravitz is Philadelphia's Go-To Real Estate Agent



Jason Kravitz specializes in residential property sales and leases in and around Philadelphia, PA. For the last 13 years, he has overseen and successfully closed numerous transactions. Jason represents buyers & sellers in all price ranges, and truly believes, that regardless of the price, his clients' home are their most valuable assets and deserves to be treated as such. Through real estate, Jason has been able to combine his passion for people, architecture, and interior design into one medium. Sotheby's International Realty defines luxury as living the lifestyle you want and deserve. Real estate is about personal expression and experience, and assisting you in that process is what Jason can do best. As a top real agent at Kurfiss Sotheby's International Realty in Philadelphia, let him show you what it's like to live in and around this iconic city.



JASON KRAVITZ

c. 267.324.4141 | o.215.735.2225 | [www.RealtorJK.com](http://www.RealtorJK.com) | [RealtorJK@Gmail.com](mailto:RealtorJK@Gmail.com)  
Kurfiss Sotheby's International Realty | 1631 Locust Street Suite 300, Philadelphia, PA 19103

Each office is independently owned & operated