



THE DATEJUST 41

The new generation of the essential classic, with a new movement and design that keep it at the forefront of watchmaking. It doesn't just tell time. It tells history.



OYSTER PERPETUAL DATEJUST 41

LILJENQUIST & BECKSTEAD

Tysons Galleria Fairfax Square Westfield Montgomery
McLean, Virginia Vienna, VA Bethesda, Maryland
(703) 448-6731 (703) 749-1200 (301) 469-7575

LENKERSDORFER JEWELERS

TYSONS CORNER CENTER MCLEAN, VIRGINIA (703) 506-6712

ROLEX • OYSTER PERPETUAL AND DATEJUST ARE ® TRADEMARKS.

GUIDE TO WASHINGTON D.C.

where[®]



EXPLORE
WINTRY WALKS
AROUND TOWN

LEARN
FUN BRAIN
BOOSTERS

PLAY
TOP EVENTS
THIS MONTH

JANUARY 2019

wheretraveler.com

where
powered by
morris digital

Extend your print
into digital



RESPONSIVE WEB DESIGN - SOCIAL MEDIA MARKETING
SEARCH ENGINE MARKETING - REPUTATION MANAGEMENT
INTERNET MARKETING - LISTING MANAGEMENT

866.688.8213 | morrisdigital.com

CONTENTS

IN EVERY ISSUE

02 EDITOR'S NOTE
32 THE FIX

WHERE NOW

04 TOP 5

What's trending now, from ice skating rinks for gliding to game centers and bars for indoor fun

06 CALENDAR

This month's must-sees, including a timely play, Martin Luther King Jr. celebrations and crafting at the Postal Museum

08 INSIDER

Top picks for art exhibitions painting the town this month

09 IN THE 'HOOD

Foggy Bottom: What to eat, see, buy and do in this bustling enclave

FEATURE

10 GETTIN' SCHOOLED

How do D.C. workaholics spend their downtime? Learning new skills, of course.

THE GUIDE

12	Shop	26	Art
14	Food	28	Be Well
19	Sights	30	Maps
24	Scene		

ON THE COVER

Skaters take to the ice at the National Gallery of Art sculpture garden. ©KRISTI BLOKHIN/SHUTTERSTOCK

January

Where Washington, D.C.



Martin Luther
King Jr. Memorial

©KROPIC/SHUTTERSTOCK

EDITOR'S NOTE

January 2019

Happy New Year! As we usher in 2019, many of us will make resolutions, vowing to exercise more or tackle that project we've been pushing off. In this issue, we offer a little inspiration with hands-on classes and lectures that may even spark a new lifelong interest. Just turn to page 10 for more. January also brings frigid temperatures, but don't let the weather deter you from experiencing all that the city has to offer this month. We're embracing the cold and heading out to ice rinks for gliding, museums for art gazing, and lovely grounds for winter strolling. So dive into this issue and follow us as we frolic in the cold.



Anne Kim-Dannibale
Group Editor
@wheredc

#SeizeTheStay

When it's cold outside, nothing beats catching a movie with friends. And while there are plenty of first-rate theaters in D.C., I've recently discovered Capitol Hill's the Miracle Theatre, a restored 1909 vaudeville stage now showing new releases and classics. wheretraveler.com/seizethestay.

connect with us



where IN THE WORLD Where is an international network of magazines first published in 1936 and distributed in over 4,000 leading hotels in more than 50 places around the world. Look for us when you visit any of the following cities, or plan ahead for your next trip by visiting us online at wheretraveler.com.
UNITED STATES Alaska, Atlanta, Baltimore, Boston, Charleston, Charlotte, Chicago, Dallas, Indianapolis, Jacksonville/St. Augustine, Las Vegas, Los Angeles, Maui, Miami, Minneapolis/St. Paul, New Orleans, New York, Oahu, Orange County (CA), Orlando, Philadelphia, Phoenix/Scottsdale, San Diego, San Francisco, Seattle, St. Louis, Tampa, Tucson, Washington, D.C. **ASIA** Singapore
AUSTRALIA Brisbane, Gold Coast, Melbourne, Sydney **CANADA** Calgary, Canadian Rockies, Edmonton, Halifax, Muskoka/Parry Sound, Ottawa, Toronto, Vancouver, Victoria, Whistler, Winnipeg **EUROPE** Berlin, Budapest, Istanbul, London, Madrid, Milan, Moscow, Paris, Rome, St. Petersburg

YOUR TRAVELING COMPANION SINCE 1936®

where
WASHINGTON, D.C.

Member of the **M** Morris Media Network

EDITORIAL & DESIGN

GROUP EDITOR **Anne Kim-Dannibale**
ASSISTANT EDITOR **Emily Sisco**
ART DIRECTOR **Dusty Martin**
CONTRIBUTING WRITER **Jennifer Barger**

CIRCULATION

CIRCULATION MANAGER **Irena Laster**

ADVERTISING

JAMES G. ELLIOTT CO., INC.
EXECUTIVE DIRECTOR **Pat O'Donnell**
ACCOUNT EXECUTIVE **Jeryl Parade**
860.830.1792, j.parade@jgco.com
ACCOUNT EXECUTIVE **Christopher Dunham**
203.994.1883, c.dunham@jgco.com

MORRIS VISITOR PUBLICATIONS

MVP | EXECUTIVE

PRESIDENT **Donna W. Kessler**
CHIEF FINANCIAL OFFICER **Dennis Kelly**
VICE PRESIDENT, OPERATIONS **Angela E. Allen**
HEAD OF DIGITAL **Richard H. Brashear II**
DIRECTOR OF CIRCULATION **Scott Ferguson**

MVP | CREATIVE

CHIEF CREATIVE OFFICER **Haines Wilkerson**
EDITOR-IN-CHIEF **Margaret Martin**
MANAGING EDITOR **Jennifer McKee**
DIRECTOR OF PHOTOGRAPHY **Isaac Arjonilla**
CREATIVE COORDINATOR **Beverly Mandelblatt**

MVP | MANUFACTURING & PUBLICATION SERVICES

DIRECTOR OF MANUFACTURING **Donald Horton**
PUBLICATION SERVICES DIRECTOR **Karen Fralick**
PUBLICATION SERVICES MANAGER **Cher Wheeler**
DIGITAL IMAGING & RETOUCH **Erik Lewis**

E-mails for all MVP employees above except contributors:
firstname.lastname@morris.com

MVP

Morris Visitor Publications

MVP | WASHINGTON, D.C.

1455 Pennsylvania Ave. NW, Suite 457, Washington, D.C. 20004
202.349.9858

MORRIS COMMUNICATIONS

CHAIRMAN **William S. Morris III**
PRESIDENT & CEO **William S. Morris IV**

wheretraveler.com

Where* magazine is produced by Morris Visitor Publications (MVP), a division of Morris Communications Co., LLC, 725 Broad St., Decumbra, GA 30901, morrismedianetwork.com. Where magazine and the **where** logo are registered trademarks of Morris Visitor Publications. Where makes every effort to ensure the accuracy of the information it publishes, but cannot be held responsible for any consequences arising from errors or omissions. All rights reserved. Reproduction in whole or in part strictly prohibited.



AMERICA'S FIRST MUSEUM OF MODERN ART

PHILLIPS

The Phillips Collection

1600 21st Street, NW (Dupont Circle Metro, Q. Street exit)

PhillipsCollection.org | [f](#) [t](#) [i](#) | Thursdays open until 8:30 pm

JANUARY 2019

WHERE NOW

An explorer's guide to what's trending in the city

WASHINGTON D.C.

TOP 5

Ways to Connect

1

Glide Along

Ice rinks all over the city, including at The Wharf (pictured), set picturesque backdrops for skating.

2

Me Time

The harried welcome the New Year at bliss-infused time-out zones such as spas, meditation centers and float tubs.

3

Hot Stuff

Brisk winter weather offers plenty of reasons to stop inside for liquid sustenance that warm the body and the soul.

4

Snowed In

This month, heading outside could mean greeting a city blanketed in white, making for peaceful walks among the monuments.

5

Indoor Fun

Too cold for ya? Sheltered diversions in escape rooms, arcades and even bars with miniature golf courses promise hours of cozy good times.



WHERE NOW

CALENDAR

January at a Glance

Jan. 18-Feb. 24

"Kleptocracy"

Kenneth Lin ("House of Cards") spins a timely tale in this thinking man's drama about the collapse of the Soviet Union, the rise of oligarchs and a young Vladimir Putin making his way to power. Prices/times vary. Arena Stage, 1101 6th St. SW, 202.554.0966, arenastage.org



Jan. 21

Martin Luther King Jr.

This lively celebration honors the Civil Rights leader with music, discussions and more. Free (tickets required). 3 pm. Strathmore, 5301 Tuckerman Lane, N. Bethesda, Md., 301.581.5108, strathmore.org

(FROM TOP) © JON BERKELEY; © DAVE NEWMAN/FICKR; CREATIVE COMMONS



Jan. 4

Justin Timberlake

The singer returns to the stage with a world tour promoting his first album in five years, "The Man in the Woods." This time, Timberlake veers from his pop/R&B roots to dabble in country and folk, but don't expect a sedate show. The entertainer GQ Magazine proclaimed "one of the greatest live performers of all time" brings woodsy backdrops but also the show-stopping glitz and special effects—not to mention dance moves—he's known for. Tickets vary. Capital One Arena, 601 F St. NW, 202.628.3200, capitalonearena.viewlift.com

Jan. 14-20

Restaurant Week

Food lovers get a taste of the capital city's sizzling culinary scene with discounts at hundreds of participating top spots. Check website for list and updated prices. ramw.org/restaurantweek



LET'S DO THIS

Because we just want to have fun
IN JANUARY

Stephen A. Geppi Comics Collection All month

Select artifacts from the collector's million-dollar trove go on display. Free. www.loc.gov

"The Play That Goes Wrong" Through Jan. 6

The London hit crosses the pond with its trademark she-nanigans. Tickets vary. www.kennedy-center.com

Apothecary Museum Saturdays

Extended tours offer in-depth looks at George Washington's pharmacy. \$10. www.alexandriava.gov/Apothecary

Wale & Friends New Year's Day Show Jan. 1

The D.C. native and a varied list of costars welcome 2019 in hip-hop style. \$39.50. www.fillmoresilverspring.com

Wine & Design Jan. 10

Put your own stamp on a craft while sipping complimentary wine and beer. \$11.50. www.postal museum.si.edu/education

Terence Blanchard & The E-Collective Jan. 10-13

The Grammy Award-winning trumpeter serenades at D.C.'s legendary blues club. \$40-\$45. www.bluesalleylive.com

The Stories Behind Harry Potter's Magic Jan. 16

Curators reveal the real-world roots at the heart of J.K. Rowling's books. \$15-\$35. www.smithsonianassociates.org

W For a full calendar of events, go to wheretraveler.com/washington-dc/local-events

INSIDER



ART

EXHIBITIONISTS

Fresh views at the museum

ART LOVERS COULD SPEND weeks exploring D.C.'s many museums—several of which are free. Among them, the National Gallery of Art holds one of the country's most impressive collections. A recent renovation added light-filled galleries for Alexander Calder's whimsical mobiles and a roof deck holding sculptures like Katharina Fritsch's electric-blue "Hahn/Cock" rooster. Through Feb. 18, "Gordon Parks: The New Tide, Early Work 1940-1950" zooms in on the self-taught photographer's formative years with 150 artifacts and pro pics from high-fashion shots to glimpses of everyday life right here in the nation's capital. *Constitution Ave. NW between 3rd and 9th streets, 202.737.4215, nga.gov*

Catch these shows before they go.



Closes Jan. 6

"Trevor Paglen: Sites Unseen" at Smithsonian American Art Museum explores landscapes using technology. 8th and F streets NW, 202.633.7970



Closes Jan. 13

"Nordic Impressions" at The Phillips Collection highlights the region's varied artists from traditionalists to cutting-edge videographers. 1600 21st St. NW, 202.387.2151



Closes Jan. 21

"No Spectators: The Art of Burning Man" at the Renwick Gallery brings the boho fest's artwork to D.C. Pennsylvania Ave. at 17th St. NW, 202.633.7970

For more great places to see **art** in the city, visit wheretraveler.com

(CLOCKWISE FROM LEFT) GORDON PARKS SELF-PORTRAIT, 1941 GELATIN SILVER PRINT SHEET, 50.8 X 40.64 CM (20X16 IN.) PRIVATE COLLECTION; TREVOR PAGLEN, PROTOTYPE FOR A NONFUNCTIONAL SATELLITE (DESIGN 4; BUILD 4), 2013, MIXED MEDIA, VIEW OF AN INSTALLATION TEST AT A HANGAR IN NEVADA, COURTESY OF THE ARTIST; METRO PICTURES, NEW YORK; ALTMAN SIEGEL, SAN FRANCISCO, IMAGE COURTESY OF THE ARTIST AND NEVADA MUSEUM OF ART; © AND PHOTO BY TREVOR PAGLEN; SÄMÛ/FINLAND; OUTI PIESKI, CROSSING PATHS, 2014, WOOD AND THREADS, COURTESY OF THE ARTIST; FOLDHAUS, SHRUMEN LUMEN, 2016 PHOTO BY RENE SMITH

Eat

This bustling neighborhood bordering Georgetown offers top-quality tastes, from Blue Duck Tavern's Michelin-starred classic American, to El Chalan's longtime Peruvian, Kaz Sushi's pristine raw fish and Marcel's white-tablecloth haute cuisine by star chef Robert Wiedmaier.

- **Blue Duck Tavern** 1201 24th St. NW, 202.419.6755
- **El Chalan** 1924 I St. NW, 202.293.2765
- **Kaz Sushi** 1915 I St. NW, 202.530.5500
- **Marcel's** 2401 Pennsylvania Ave. NW, 202.296.1166

Shop

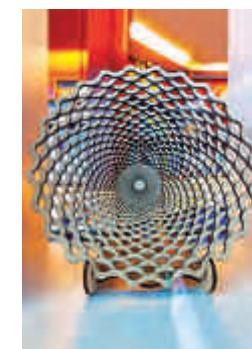
This enclave may not be a shopper's paradise, but those itching to spend score at spots, like the AIA Store, where they find beautiful architecture books and design-forward home decor. Tucked inside the Department of the Interior, the Indian Craft Shop stocks handmade treasures by established and emerging Native American artisans. Tip: Bring I.D. to gain entry into the building.

- **AIA Store** 1735 New York Ave. NW, 202.626.7475
- **Indian Craft Shop** 1849 C St. NW, 202.208.4056

(Clockwise from top) The Textile Museum; the AIA Store; The Kennedy Center; The Hive Bar

IN THE 'HOOD

FIND THE BEST IN **FOGGY BOTTOM**, ONE BLOCK AT A TIME



Drink

College students from nearby George Washington University mix with an international crowd from the IMF and the World Bank at watering holes like Froggy Bottom. Inside the new micro Hive Hotel, Hive Bar pours craft cocktails using local spirits, while the Watergate's Next Whisky Bar shows off a vast collection of ryes.

- **Froggy Bottom Pub** 2021 K St. NW, 202.338.3000
- **The Hive Bar** 2224 F St. NW, 202.849.8499
- **The Next Whisky Bar** 2650 Virginia Ave. NW, 844.617.1972

Play

The National Academy of Sciences pays tribute to Albert Einstein with Robert Berks's larger-than-life statue. A few blocks away, the living memorial to John F. Kennedy produces top shows (many free) and offers sweeping river views from the terrace. On the GWU campus, the Textile Museum preserves 20,000 cloth artifacts spanning five millennia across five continents.

- **Albert Einstein Memorial** 2101 Constitution Ave. NW
- **The Kennedy Center** 2700 F St. NW, 202.467.4600
- **The Textile Museum** 701 21st St. NW, 202.994.5200

For more things to do in D.C.'s **Foggy Bottom**, go to wheretraveler.com

Gettin' Schooled

How do D.C. workaholics spend their downtime? Learning new skills, of course.

By Jennifer Barger

AN OLD SAYING GOES that high school class presidents move to New York City and valedictorians come to Washington, D.C. Blame the latter city's wonky, know-it-all nature (plus big-name colleges like Georgetown and Howard): "People here are lifelong learners," says Candace Cowan, a longtime Washingtonian, who, with her husband Rod, does what many locals do, heads back to class at night and on weekends.

TIME FOR CLASS

The Cowans are devotees of the Smithsonian Resident Associates (smithsonianasociates.org), which offers 750 learning sessions a year. These range from lectures by celebs like Oprah to courses on topics from brain science and neon light-sculpture making. But the Smithsonian isn't the only place offering quick hits of personal enrichment. Multiple cooking schools and crafty workshops, many with single sessions lasting just a few hours, mean you can go home knowing a bit more about Japanese sushi rolling, Civil War history or flower arranging.

"We've done programs on listening to jazz, hikes through Rock Creek Park and a lot of science courses at the Smithsonian," says Candace Cowan. "You get such interesting people." Some courses take place in the Ripley Center, a complex of classrooms and lecture halls underneath the Smithsonian Castle on the National Mall; others branch out into local parks and restaurants. This month, you could sample Chesapeake cuisine and hear about how to make it January 8 with Baltimore chef John Shields, attend an all-day Fair Isle knitting workshop January 19 or take in a lecture on Martin Luther King Jr.'s political legacy January 23.

Across town in the hip, up-and-coming Petworth neighborhood, The Lemon Collective rolls out an eclectic array of hands-on workshops on the snug second floor of stylish new flower and plant shop She Loves Me (808 Upshur St. NW, thelemoncollective.com). Small groups gather for know-how on crafting flower crowns, reading tarot cards or doing indigo dyeing. "There's nothing magical about the formula," says co-founder (and proprietor of the flower shop) Holley Simmons. "There aren't that many evening opportunities for adults to come together that don't involve

drinking or going to a bar. This is nice, because people hang out, learn something and often leave with a souvenir."

This month's lineup includes a terrarium-making class January 9, a how-to arrange flowers session January 13 and a plant care course January 15; check the website for other off-site instruction like champagne tastings at local bars.

Increasingly food-centric Washington also serves up plenty of classes. Not far from the White House, CulinAerie (1131 14th St. NW, culinaerie.com) fills its sparkling kitchen-cum-classroom with spatulas-on how-tos nearly daily. "You experience what you're going to do, and then you have to do it," says local Kate Byrne, who has taken nine classes here over the last few years. "The first time I did it, I burnt rice; but I moved on to doing lamb shank. They make it fun, the chefs chat with you, and there's great music." Plus, you get to chow down on what you prepare, and there's usually free-flowing wine or beer. This month, wannabe Giadas and Gordons learn to make puff pastry January 12 or a New Orleans-style brunch January 20—yes, there will be beignets at the latter.

Commercial kitchen/business incubator Mess Hall (703 Edgewood St. NE, messhall-dc.com) also hosts frequent culinary events in its urban barn-like digs (think polished cement floors and rustic wood doors). "So many people are pining to do things themselves, and this fills that need," says owner Al Goldberg. "We think it has a ripple effect on localism, too." Upcoming offerings include a pig-butcher demo and dinner called "Some Disassembly Required" January 23. Yes, the porker is already dead; no, students don't actually get to wield knives, but they do get to watch a local butcher doing it up close. The knives are "sharp enough to take down a person," says Goldberg. "It'd be too dangerous!"



BRAIN BOOSTERS

(Top and bottom) Smithsonian Associates lecture and hands-on class; (Center) Mess Hall butchering; (Opposite) The Lemon Collective terrarium making

(TOP AND BOTTOM) COURTESY SMITHSONIAN ASSOCIATES; ©MIKE HANEY, (OPPOSITE PAGE) COURTESY THE LEMON COLLECTIVE

THE GUIDE

An index of our favorite places



Shop

SEARCH THE CITY / For more listings, see wheretraveler.com/washington-dc



Salt & Sundry

Opened in 2012 in order to share owner Amanda McClements' love of cooking, entertainment and design, this "urban bohemian" boutique stocks dinnerware, linens and vintage finds, plus small-batch foods and craft cocktail ingredients, all from independent makers and designers. McClements also gets help from family, with dad crafting one-of-a-kind tables out of local and salvaged wood for clients. *Multiple locations, shopsaltandsundry.com*

SHOPPING CENTERS

CITYCENTERDC

Luxury complex for coveted labels including Hermes, Louis Vuitton, Dior, Vince, plus restaurants Daniel Boulud's DBGB Kitchen and Bar, Momofuku, Centrolina and Fig & Olive. Tesla dealership. Hours vary. 10th St. NW (Between H and I), 202.289.9000 Metro: Metro Center or Gallery Pl-Chinatown

FASHION CENTRE AT PENTAGON CITY

Light-filled mall with Nordstrom and Macy's, 170-plus shops (Forever 21, J. Crew, Sephora, Superdry, Zara). Food court. M-Sa 10 am-9:30 pm, Su 11 am-6 pm. 1100 S. Hayes St., Arlington, Va., 703.415.2401 Metro: Pentagon City

TYSONS CORNER CENTER

Largest mall in the metropolitan area has 300-plus shops, restaurants and a cineplex. Bloomingdale's, Nordstrom, L.L. Bean, Lego, West Elm and Zara. M-Sa 10 am-9:30 pm, Su 11 am-

7 pm 1961 Chain Bridge Road, Tysons Corner, Va., 703.893.9400 Metro: Tysons Corner

TYSONS GALLERIA

Neiman Marcus, Macy's, Saks Fifth Avenue plus 100 other upscale shops (Chanel, Gucci, Louis Vuitton, Michael Kors) in addition to restaurants (Legal Sea Foods) and Isabella Eatery upscale food court (third floor). M-Sa 10 am-9 pm, Su noon-6 pm. Exit I-495 at 46A. 2001 International Drive, McLean, Va., 703.827.7730

APPAREL-MEN ONWARD RESERVE

Georgia-based designer's store for outdoorsy looks in a glam hunting lodge-like space. Accessories, decor, gifts. Bar. M-Sa 10 am-8 pm, Su noon-6 pm. 1063 Wisconsin Ave. NW, 202.838.9365

READ WALL

Local founder with knowledgeable staff helping with "natural shoulder" tailored suits and bespoke. Also shirts,

pants, etc. By appointment. 1875 Connecticut Ave. NW, 10th floor, 202.733.1913

APPAREL-MEN & WOMEN

BILLY REID

Renowned designer's collection of rugged button-ups, derby-ready suits, distressed leather handbags. M-Th 11 am-7 pm, F-Sa 11 am-8 pm, Su noon-6 pm. 3211 M St. NW, 202.499.6765

PROPER TOPPER

Berets to derbies, cloches and fascinators. Also gifts, clothes, jewelry, accessories. Hours vary by location. 1350 Connecticut Ave. NW, 202.842.3055 Metro: Dupont Circle (South); 3322 Wisconsin Ave. NW, 202.321.7499

APPAREL-WOMEN SECONDI

Sunny shop reselling upscale labels with deeper discounts by the day. M-Tu, Sa 11 am-6 pm, W-F 11 am-7 pm, Su 1-5 pm. 1702 Connecticut Ave. NW,

2nd floor, 202.667.1122 Metro: Dupont Circle (North)

VIOLET

Hip shop for on-trend looks at affordable prices. Personal styling available. M-Sa 10 am-8 pm, Su 11 am-6 pm. 1924 8th St. NW, Suite 115, 202.621.9225 Metro: U Street-Cardozo

BEAUTY

BELLACARA

Angela Sitalides' spot for luxury skincare, beauty and haircare. Bumble and Bumble, Butter London, Dermalogica, Kai, SkinCeuticals, all tested by Sitalides herself. M-F 11 am-6 pm, Sa 10 am-6 pm, Su noon-5 pm. 1000 King St., Alexandria, Va., 703.299.9652

TAKE CARE SHOP

Bright studio for all-natural beauty brands (women and men), made locally in small batches. Daily 11 am-7 pm. 1338 Wisconsin Ave. NW, 202.717.2600

COURTESY SALT & SUNDRY

SEARCH THE CITY / For more listings, see wheretraveler.com/washington-dc



BOOKS

KRAMERBOOKS & AFTERWORDS CAFE

Newly expanded indie bookstore with full-service restaurant and bar since 1976. Events, live music, patio. Su-Th 7:30 am-1 am, F-Sa till 3 am. 1517 Connecticut Ave. NW, 202.387.1400 Metro: Dupont Circle (North)

POLITICS AND PROSE

Since 1984, niche selections and popular book signings. In-store OPUS book machine prints and binds books for authors in minutes. Coffee shop downstairs (daily from 8 am). M-Sa 9 am-10 pm, Su 10 am-8 pm. 5015 Connecticut Ave. NW, 202.364.1919

CRAFTS & COLLECTIBLES

THE INDIAN CRAFT SHOP

At Department of the Interior since 1938, outlet for American Indian artists to market their crafts. Basketry, weavings, carvings, kachinas, beadwork plus outdoor sculpture garden. Present ID to enter building. M-F 8:30 am-4:30 pm and the third Sa of each month 10 am-4 pm. 1849 C St. NW, 202.208.4056

LOOPED YARN WORKS

Well-organized home-like shop encouraging in-store knitting. More than 30 brands of yarns, patterns, and needles and notions. Weekly classes and events. Hours vary. Check website for latest. 1732 Connecticut Ave. NW, 202.714.5667 Metro: Dupont Circle (North)

HOME DECOR & GIFTS

HOME RULE

Tiny but expertly curated den of kitchen and bath gear in bright hues. Essentials and fun accessories. M-Sa 11 am-7 pm, Su noon-5:30 pm. 1807 14th St. NW, 202.797.5544

WHITE HOUSE HISTORICAL ASSOCIATION

Books, Christmas ornaments, jewelry and items inspired by the history of the White House. Hours vary by location. 1450 Pennsylvania Ave. NW, 202.208.7031 Metro: Federal Triangle; 1610 H St. NW, 202.218.4337 Metro: Farragut North or Farragut West

JEWELRY

LENKERSDORFER

Sister store to Liljenquist & Beckstead since 1993. Fine wristwatches by Patek Philippe, Breitling, Cartier, Panerai as well as fine jewelry from Roberto Coin, Chopard, Bulgari. Skilled technicians for repairs. M-Th 10 am-9 pm, F-Sa 10 am-9:30 pm, Su 11 am-7 pm. 1961 Chain Bridge Road, Tysons Corner, Va., 703.506.6712 Metro: Tysons Corner

LILJENQUIST & BECKSTEAD

Since 1979 watches by Bulgari, Cartier, Rolex, Chopard. Bell & Ross timepieces "designed for professionals," Tacori diamond rings and David Yurman bracelets. Hours vary by location. Tysons Galleria (watch store), 2001 International Drive, McLean, Va., 703.448.6731; Westfield Montgomery, 2412 Montgomery Mall, Bethesda, Md., 301.469.7575; Fairfax Square, 8075 Leesburg Pike, Vienna, Va., 703.749.1200; Westfield Annapolis, 1660 Annapolis Mall, Annapolis, Md., 410.224.4787

MALLORY SHELTER JEWELRY

Handmade jewelry in 14-karat gold, vermeil, sterling silver, semi-precious gemstones. Custom orders (engagement/wedding, platinum, diamonds). By appointment only and online. 1921 Sunderland

Place NW, 202.455.5314 Metro: Dupont Circle (South)

KIDS

LABYRINTH

Capitol Hill store stocking games from classics (Chutes & Ladders, Monopoly) to role-playing and expansion (Catan). Puzzles, Pokemon, STEM. Dedicated area for younger kids. In-store events like tournaments (Magic the Gathering), monthly kids' night out (games, pizza). Tu, Th-F 10 am-10 pm; W 10 am-9 pm; Sa 9 am-7 pm; Su 10 am-6 pm. 645 Pennsylvania Ave. SE, 202.544.1059 Metro: Eastern Market

LITTLE BIRDIES BOUTIQUE

High-end children's clothing store for newborns to size 14, plus organic products, gifts, fine art and bedroom decor. Brands including Bella Bliss, Candy Lab, Milkbar Kids, Young Versace and local designers. Tu-Sa 10 am-6 pm, Su noon-5 pm. 1526 Wisconsin Ave. NW, 202.333.1059

SPECIALTY

MAKETTO

Communal marketplace mixing retail, dining and coffee in a sleek setting with outdoor seating. Menswear (Rains, Taikan) and accessories. James Beard Award-nominee Erik Bruner-Yang overseeing a menu of Cambodian/Taiwanese street food (steamed pork bao, Taiwanese fried chicken). Frenchie's desserts, Vigilante coffee. M-Th 7 am-10 pm, F-Sa till 11 pm, Su 7 am-5 pm. 1351 H St. NE, 202.838.9972

UNION MARKET

Culinary marketplace with local "artisan" vendors including Follain natural cosmetics, Peregrine Espresso, Righteous Cheese Co. and Rappahannock Oyster Co., plus John Mooney's Bidwell restaurant. Wines, fresh bread, empanadas. Tu-F 11 am-8 pm, Sa-Su 8 am-8 pm. 6th St. and Neal Place NE 301.347.3998



St. Anselm

Grilled meat is the focus at this outpost of Stephen Starr and Joe Carroll's popular NYC restaurant. "Top Chef" finalist Marjorie Meek-Bradley helms the kitchen, sending out dishes such as pork porterhouse, rack of lamb, ax handle rib eye and tuna steak. Craft beer and cider, creative cocktails and an experimental wine list add to the ingenuity of the menu. Inside, wood paneling, warm fabrics and exposed brick lend a rustic yet cozy atmosphere. 1250 5th St. NE, 202.864.2199, stanselmdc.com

14TH & U CORRIDOR

BEN'S CHILI BOWL

Southern Former pool hall serving chili half-smokes, burgers, cakes to Obama et. al., since 1958. B (M-F); L, D (daily). 1213 U St. NW, 202.667.0909 Metro: U St.-Cardozo; 1001 H St. NE, 202.733.1895; 1725 Wilson Blvd., Arlington, Va., 571.312.1091

DUKEM

Ethiopian Expat haven for communal-style, spice-rich kitfo, tibbs, vegetarian dishes to scoop with spongy injera. VIP Bar with Ethiopian art. NFL on big-screen TVs. Live jazz. L, D (daily). 1114-1118 U St. NW, 202.667.8735

GHIBELLINA

Italian Sleek-meets-rustic "Italian gastro-pub" for Tuscan fare: seafood, veal, calamari, pizzas, salumi, pastas, porterhouse steak for two. Beers, cocktails, wines. L (Th-F), D (daily), Br (Sa-Su). 1610 14th St. NW, 202.803.2389

LE DIPLOMATE

French Stephen Starr's red banquettes, zinc-topped bar and a "garden room" for steak frites, foie gras "parfait," lamb stew with fennel and oranges, sorbets. D (daily), Br (Sa-Su). 1601 14th St. NW, 202.332.3333

MAYDAN

Middle Eastern Rose Previte of popular Compass Rose hitting flavor high notes in underground digs featuring a blazing hearth. Seafood, kabobs, meats, spreads and salads trotting the globe from North Africa to Iran. Bar till late. D (daily). 1346 Florida Ave. NW, 202.370.3696 Metro: U Street-Cardozo

ADAMS MORGAN, D.C.

ARAKE'S PROGRESS

American James Beard winner Spike Gjerde's first D.C. foray focused on local producers and seasonal ingredients. Raw bar, small plates (fried quail, bone broth), shared dishes (stuffed whole porgy, rib eye), mains (spit-roasted partridge, grilled sweet potato). Extensive wine list with local makers. D (daily), Br (Sa-Su). The Line Hotel, 1770 Euclid St. NW, 202.864.4190

BROTHERS AND SISTERS

American/Asian James Beard-nominated Erik Bruner-Yang's newest all-day restaurant. Western-style food as seen through the lens of Japan and Taiwan (milk bread with eggs and potato rosti, octopus hot dog, knife-cut noodles). Luxuries like an uni tray service with multiple toppings. B, L & D (daily). The Line

Hotel, 1770 Euclid St. NW, 202.864.4180

LAPIS AFGHAN BISTRO

Afghan The Popal family's ode to Afghan home cooking with matriarch in the kitchen. Comfort foods like *mantoo* (dumplings), *bolani* (stuffed flat breads), grilled kabobs, plus vegetarian dishes (*sabzi*, sauteed spinach; *samarok*, sauteed mushrooms). Airy space with blue (lapis) accents, family portraits and antique rugs. Patio. D (daily), Br (Sa-Su). 1847 Columbia Road NW, 202.299.9630

MINTWOOD PLACE

American Cedric Maupillier's classy comfort food (sustainable and local): deviled pickled eggs, duck and pork cassoulet, parmesan leek risotto, key lime pie. Kids menu. Cocktails, beers on tap. Green-friendly interior with wood from an Amish barn. D (Tu-Su), Br (Sa-Su). 1813 Columbia Road NW, 202.234.6732

TAIL UP GOAT

American Up-and-comers with lauded resumes (Komi, Little Serow) in their own laid-back Michelin-starred spot. Inventive twists on classics: smoked potato ravioli, lamb ribs. D (daily). 1827 Adams Mill Road NW, 202.986.9600

ALEXANDRIA, VA.

COLUMBIA FIREHOUSE

American Inside the former 19th-century Columbia Steam Engine Fire Company, a two-tiered brasserie/bar with glass atrium. Raw bar, small plates and "supper" (comfort food, burgers, steaks and chops). L (Tu-F), D (daily), Br (Sa-Su). 109 S. Saint Asaph St., 703.683.1776

HANK'S PASTA BAR

Italian Part of Jamie Leeds' ever-expanding Hank's empire, this one focusing on handmade pastas—15 varieties, plus risotto, antipasti, crostini, whole-roasted fish, lamb chops. Reservations recommended. L (M-Th), D (daily), Br (F-Su). 600 Montgomery St., 571.312.4117

LIVE OAK

Southern Chef Justus Frank (Fiola) bringing Charleston by way of Alexandria. Upscale comfort classics (head on) shrimp and grits, smoked pork ribs, braised collard greens tortellini. Strawberry shortcake, housemade ice cream. D (daily), Br (Sa-Su). 1603 Commonwealth Ave., 571.312.0402

MOUNT VERNON INN

Southern Candlelit dining with George and Martha favorites like hoe cakes, peanut and chestnut soup, plus cheddar

burger, duck with apricot sauce, crab cakes, fried chicken, steaks. Children's menu. Fireplace. Live music some nights. L (M-F), D (Tu-Sa), Br (Sa-Su). 3200 Mount Vernon Memorial Parkway, 703.799.6800

NASIME

Japanese Cozy modern dining room on bustling main drag in Old Town, pampering with high-end tasting menu highlighting from-scratch Japanese dishes at an affordable price. D (daily). 1209 King St., 703.457.0146

RT'S RESTAURANT

Cajun/Creole Neighborhood spot with character and sounds from zydeco to blues. Known for Jack Daniels shrimp, alligator stew, gumbo, po-boys, seafood, she-crab soup and crawfish étouffée. Cocktails, beers. L (M-Sa), D (daily). 3804 Mount Vernon Ave., 703.684.6010

TRADEMARK

American In the Westin, sophisticated gastropub named for nearby patent office (see famous inventor photos). British spins on Bass Ale fish and chips, beer can chicken and mac and cheese. Inventive cocktails. Happy hour punch specials, bar late. B, D (daily), Br (Su). 2080 Jamieson Ave., Alexandria, Va., 703.253.8640

VOLA'S DOCKSIDE GRILL AND HI-TIDE LOUNGE

Seafood Named for the city's feisty first woman city manager with a hand in the waterfront's development, a casual and friendly spot for seafood comfort foods. Fish and chips, crab cakes, fried chicken with water views. Hi-Tide Lounge for bar bites, frozen cocktails, beer, wine. L, D (daily), Br (Sa-Su). 101 N. Union St., 703.935.8890

CAPITOL HILL

ACQUA AL 2

Italian Restaurant of chef-owner Ari Gejdenson

with recipes like beef fillet with blueberry sauce, grilled eggplant, parmesan cheese appetizers plus soups and salads. L (Tu-Sa), D (daily). 212 Seventh St. SE, 202.525.4375

AMBAR

Balkan A Belgrade original in D.C. with communal tables, copper-top bar and Mediterranean decor. Serbia meets New World in slow-cooked meats and mezze, white veal soup and cheese pie. Balkan wines and beers, 30 varieties of Serbian Rakia. Bar late. Hours vary by location. 523 Eighth St. SE, 202.813.3039 Metro: Eastern Market; 2901 Wilson Blvd., 703.875.9663 Metro: Clarendon

CHIKO

Asian DC's Scott Drewno (The Source) and Danny Kim (Mandu) joining forces for Chinese and Korean flavors in cumin lamb stir-fry, pork and kimchi potstickers, rib eye with rice cakes. Vegetarian, gluten-free. "Kitchen Counter" with views of the action for up to four (reserve online). "After Dark" series with guest chefs and tasting menus. Check schedule online. D (daily). 423 8th St. SE, 202.558.9934 Metro: Eastern Market

GARRISON

American Culinary Institute of America-trained Robert Weland working with local farms to produce seasonal dishes in a warm, wood-accented space. Whole-roasted vegetables, housemade pastas, locally sourced fish and meat. Cocktail menu, Euro-focused wines. D (Tu-Su), Br (Sa-Su). 524 Eighth St. SE, 202.506.2445

GOOD STUFF EATERY

American "Top Chef" contestant Spike Mendelsohn's specialty burgers, hand-cut fries, old-fashioned shakes. Modern-rustic counter service, communal table, cell phone charging stations. L, D (M-Sa); Airport B, L, D (daily). 303 Pennsylvania Ave. SE,

202.543.8222 Metro: Capitol South; 2110 Crystal Drive, Arlington, Va., 703.415.4663 Metro: Crystal City

TED'S BULLETIN

American Lively spot with vintage decor and leather booths. All-day breakfast, barbecue, chili, "supper" dishes. Pastries like pies and "pop tarts." Bar with milkshakes, malts and cocktails. B, L, D (daily). 505 8th St. SE, 202.544.8337 Metro: Eastern Market; 1818 14th St. NW, 202.265.8337; 11948 Market St., Reston, Va.; 2911 District Ave., Fairfax, Va., 571.830.6680

DOWNTOWN

AMERICAN SON

American Tim Ma's all-day cafe serving up twists on American fare as seen through the eyes of an immigrant. Bone-in ribeye and Hudson Valley duck breast, but also tofu gnocchi and spaghetti squash "ssam" (wraps). B, L, D (daily). 1201 K St. NW, 202.900.8416 Metro: McPherson Sq

EQUINOX RESTAURANT

American Conscientious, prize-winning Todd Gray pairing wines to crab cakes with grits, grass-fed veal, Muscovy duck, vegan options. A la carte or multicourse tastings. Prix-fixe menus (regular and vegan) four or six courses, wine extra. L (M-F), D (M-Sa), Br (Su). 818 Connecticut Ave. NW, 202.331.8118

MIRABELLE

French-American Blocks from the executive mansion, elegant dining room for dishes highlighting New England roots. Butter poached Maine lobster, stuffed quail. Valet parking at dinner. Hibiscus poached apple with black sesame ice cream. Tasting menus available (check website for updated prices). L (M-F), D (M-Sa). 900 16th St. NW, 202.506.3833 Metro: McPherson Square or Farragut West

OCCIDENTAL GRILL & SEAFOOD

American Legendary spot sending out duck breast, filet mignon, butternut squash ravioli, classic Maine lobster bisque. Wines, craft beers, cocktails. Weekday happy hour with bar fare. Valet \$8 (with validation) at Occidental. L (M-F), D (M-Sa). 1475 Pennsylvania Ave. NW, 202.783.1475 Metro: Metro Center

PLUME

American Ralf Schlegel's Michelin-starred restaurant with luxe dishes à la Monticello's gardens inside elegant Jefferson Hotel. Prix fixe, chef's tasting. Foie gras terrine, lobster gratin, risotto, Angus prime filet, bison with blueberry barbecue sauce. Cozy nooks, 1,300-label wine cellar, landscape murals on silk and fireplace. Free parking. The Greenhouse for light fare, Quill for cocktails. D (Tu-Sa). 1200 16th St. NW, 202.448.3227

DUPONT CIRCLE

HANK'S OYSTER BAR

Seafood Chef Jamie Leeds with her famous "Meat and Two" (one protein like molasses short ribs or fried oysters with two sides). Wines and cocktails like "i know what boys like" (bacon-washed rye and blended scotch whiskey). L, D, Br, times vary by location. 1624 Q St. NW, 202.462.4265 Metro: Dupont Circle; 633 Pennsylvania Ave. SE, 202.733.1971 Metro: Eastern Market; 1026 King St., Alexandria, Va., 703.759.4265 Metro: King Street (about seven blocks); 701 Wharf St. SW, 202.817.3055 Metro: Waterfront

SIREN

Seafood Robert Wiedmaier's handsome, Old World-style quarters in Logan Circle for pristine fish. Raw bar, seafood towers, caviar service, whole fish, plus wagyu New York strip, roasted duck. Stylish, classic cocktails/wine/beer. Pre-theater menu. Live jazz

Th-Sa pm. D (daily), Br (Su).
1515 Rhode Island Ave. NW,
202.521.7171

SUSHI TARO

Japanese Michelin-starred second-story spot with cherry wood walls and tatami rooms, kimonoed hostess and exotic sushi (flute fish, live scallops) by master chef Nobu Yamazaki and team. L (M-F), D (M-Sa). 1503 17th St. NW, 202.462.8999 Metro: Dupont Circle

FOGGY BOTTOM/ WEST END

BEEFSTEAK

American/Vegetarian From José Andrés, fast-casual serving veggie-heavy menu of bowls (some meat, too). Fresh-pressed juices, wine and local craft beer, plus Spindrift sodas. B, L, D (daily). 800 22nd St. NW, 202.296.1439 Metro: Foggy Bottom-GWU; 1528 Connecticut Ave. NW, 202.986.7597 Metro: Dupont Circle (North); 4531 Wisconsin Ave. NW, 202.244.2529

KAZSUSHI BISTRO

Japanese Prized chef Kazuhiro Okochi's intimate spot for seared albacore tuna, pork belly lettuce wrap, grilled baby octopus. Tasting menu, bento boxes, sakes. Counter seats near the knife work. L (M-F), D (M-Sa). 1915 I (Eye) St. NW, 202.530.5500

GEORGETOWN 1789 RESTAURANT

American Federal townhouse with cozy rooms and fireplaces drawing presidents and politicians. Tom Colicchio alum Samuel Kim adds modern touches to a traditional menu while David Collier crafts exquisite desserts. Free valet parking. D (daily). 1226 36th St. NW, 202.965.1789

AMERICA EATS TAVERN

American James Beard Award winner José Andrés relocating this popular spot from Northern Virginia to Georgetown's main drag. Classic American fare skillet

cornbread, oyster-heavy seafood bar, BBQ, wood-fire-grilled salmon. Martha Washington's chocolate cake. L, D (daily). 3139 M St. NW, 202.450.6862

FIOLA MARE

Seafood James Beard Award-winner Fabio Trabocchi's venture by the river. Brinn Sinnott sending out oysters, smoked cod, Maine lobster, yellowfin tuna carpaccio, appetart, Sardinian ricotta doughnuts. Cocktails to mocktails. L (Tu-F), D (daily), Br (Sa-Su). Valet (day only) \$16. 3050 K St. NW, 202.628.0065

MARTIN'S TAVERN

American Since 1933, politicians (from JFK to George W. Bush), Supreme Court justices, spies, celebs and Georgetown friends have been saying "Meet me at Martin's." Classic fare: tavern burger, prime rib, fish and chips, lobster risotto, plus daily chef's specials. Shaded patio, weather permitting. Ask to see history brochure. L (M-F), D (daily), Br (Sa-Su). 1264 Wisconsin Ave. NW, 202.333.7370

NATIONAL HARBOR FISH BY JOSÉ ANDRÉS

Seafood Beard winner José Andrés in glitzy MGM National Harbor, with water and city views, ocean-themed artwork. Expansive patio with outdoor bar and fountains. Live seafood in tanks highlighting local fare (Maryland blue crabs, Rappahannock oysters) in global preparations. Tuna tartare, lobster jambalaya. D (W-M). 7100 Oxon Hill Road, Oxon Hill, Md., 301.971.6050

PENN QUARTER/ CHINATOWN

DBGB KITCHEN AND BAR

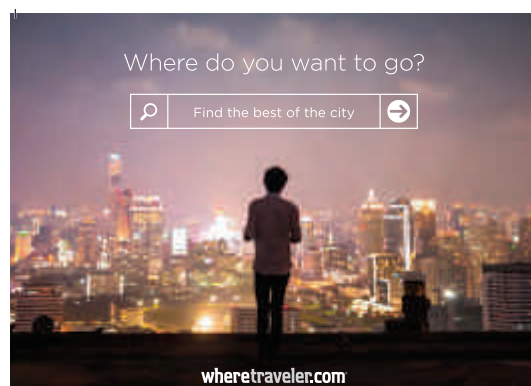
French Daniel Boulud's bustling bistro in CityCenter. House-cured meats, seafood, burgers, suckling pig. Glass walls, casual seats in Bar Room, china plates signed by celeb chef pals. Good spirits, French-focus wine list, unique



Authentic Ethiopian Cuisine
1334 9th Street, NW
Washington, DC 20001
202-299-9703
4921 Bethesda Avenue
Bethesda, MD 20814
301-652-6500
www.chercherrestaurant.com



Authentic Szechuan, Mandarin & Cantonese Cuisine
Dine-in ~ Carry-out ~ Delivery ~ Online Ordering
1912 I (Eye) St. NW 202.293.6000
www.chalins.com



Where do you want to go?
Find the best of the city
wheretraveler.com

beers. L (M-F), D (daily), Br (Sa-Su). 931 H St. NW, 202.695.7660 Metro: Metro Center or Gallery Pl-Chinatown

MOMOFUKU

Asian Prize-winning chef David Chang's popular NYC spot for pork buns, ramen noodles, "bo ssam" whole roasted pork shoulder lettuce wraps (\$\$\$\$) with Korean twist. Limited number of reservations accepted through website. L (M-F), D (daily), Br (Sa-Su). 1090 I St. NW, 202.602.1832 Metro: Metro Center or Gallery Pl-Chinatown

OYAMEL

Mexican A José Andrés cocina with ceviche, tacos (mahi mahi, baby pig, even cricket), stuffed poblano, hot and cold antojitos. Margarita with salt "air," 50 tequilas. Night owl bar menu. L (M-F), D (daily), Br (Sa-Su). 401 Seventh St. NW, 202.628.1005

RASIKA

Indian James Beard Award-winner Vikram Sunderam in a open kitchen with griddle, barbecue, tandoori, curries. (Pre-theater), 100 wines, bar with exotic cocktails. L (M-F), D (M-Sa). 633 D St. NW, 202.637.1222 Metro: Archives-Navy Memorial

ZAYTINYA

Mediterranean José Andrés' Santorini-esque spot with a mezze offerings inspired by Greek, Lebanese and Turkish cuisines. Go for the small plates, innovative cocktails and the selection of Mediterranean wines. L (daily); D (M-Sa); Br (Sa-Su) 701 9th St. NW, 202.638.0800 Metro: Gallery Pl-Chinatown

SHAW

CHERCHER

Ethiopian A friendly, casual restaurant serving popular and authentic dishes like doro

we't (chicken stew) and yebeg we't (lamb stew). Vegetarian options, Ethiopian coffee. Spices for sale. L, D (daily). 1334 Ninth St. NW, 202.299.9703; 4921 Bethesda Ave., Bethesda, Md., 301.652.6500

THE DABNEY

American Jeremiah Langhorne's Michelin-starred rustic digs in hip Blagden Alley for open-hearth cooking, using ingredients from a rooftop garden. Menu changes daily. D (Tu-Su). Downstairs, Dabney Cellar pouring wines by the glass paired with charcuterie in a cozy, low-light setting. No reservations. 122 Blagden Alley, 202.450.1015 Metro: Mt. Vernon Sq

HAIKAN

Japanese Bright, modernist backdrop for Sapporo-style ramen, along with playful small plates (mapo tofu pou-tine, "pea-sar" Caesar salad

with peas). Washington Post rated 2 1/2 stars. L (W-Su), D (daily). Bar late. 805 V St. NW, 202.299.1000 Metro: Shaw-Howard U

WATERFRONT

CHLOE

Global Lauded local Haidar Karoum's first solo endeavor exploring global flavors with a modern sensibility. Cobia crudo, spiced beef hummus, roasted potato gnocchi, whole fish. Chocolate sundae, cheese plate. Beer, wine, mocktails. L (Tu-F), D (daily), Br (Sa-Su). 1331 4th St. SE, 202.313.7007 Metro: Navy Yard

DEL MAR

Seafood James Beard Award-winner Fabio Trabocchi's soaring digs paying homage to his wife's Spanish coastal heritage. Wide-ranging menu from tapas with a seaside spin to caviar, grilled seafood and family-style paella. Classic cocktails, mocktails, ciders. Wine list focused on Spain, but also France and California. L (Tu-F), D (daily), Br (Sa-Su). 791 Wharf St. SW, 202.525.1402 Metro: Waterfront

KITH AND KIN

Caribbean "Top Chef" alum and CIA/Hyde Park grad Kwame Onwuachi's spot for African-accented flavors. "Torched" mackerel with jollof rice, burger with house-ground patties and jerk-spiced bacon. B, L, D (daily). The Wharf, 801 Wharf St. SW, 202.878.8566 Metro: Waterfront

REQUIN

French "Top Chef" celeb Mike Isabella's classic bistro fare (steak frites, roasted chicken), plus small plates (foie gras, steak tartare). Crème brûlée. Bottomless brunch. Mostly French wine list. D (daily), Br (Sa-Su) at Fairfax location. The Wharf, 100 District Square SW, 202.827.8380 Metro: Waterfront



Eat, Drink, SHAW
A world of flavors, steps from Chinatown, the Convention Center and U Street nightlife.
Use our free mobile app, DineinShaw, to see over 100 options.
www.shawmainstreets.org

CONVIVIAL An American Café "Bold and playful takes on the tried-and-true" —Michelin Guide 801 O Street, NW 202-525-2870 www.convivialdc.com	ESPITAL MEZCALERIA Masa, Mole & Mezcal 1250 9th Street, NW 202-621-9695 www.espitad.com
the dabney "The food is nothing short of stellar" -Michelin Guide 122 Blagden Alley, NW • 202-450-1015 www.thedabney.com	HANUMANH Laotian Cuisine & Cocktails 1604 7th Street, NW www.hanumanh.com
AWARD-WINNING ITALIAN CUISINE 1914 9th Street, NW 202.686.2966 www.DinosGrotto.com	Mason Dixie Southern Classics, Made to Order 1819 7th Street, NW • 202-849-3518 www.masondixiebiscuits.com

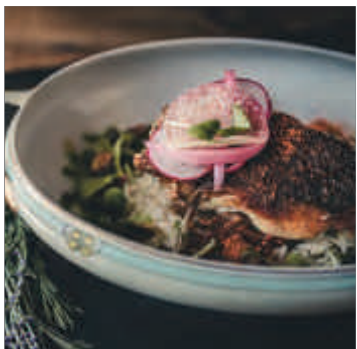
WHERE TO DINE IN DC



NAZCA MOCHICA

Peruvian. This *Michelin Guide* recommended restaurant located in Dupont is where modern takes on traditional Peruvian cuisine and drink, ranging from pisco cocktails to cebiches, seafood, beef tenderloin, lamb, and vegetarian dishes.

1633 P St NW
202.733.3170
nazcamochica.com



CEDAR KNOLL

Situated on a picturesque hill in a historic home overlooking the Potomac River, Cedar Knoll offers French and American cuisine using local ingredients.

9030 Lucia Ln. Alexandria, Va 22308
(703)780-3665
cedarknollva.com



THE DELEGATE

The Delegate is Shaw's fresh new-American restaurant, offering a modern bar and thoughtfully crafted menus with a twist. Find delicious in the center of DC!

901 L Street NW
202.567.6645
thedelegaterestaurant.com



TABERNA DEL ALABARDERO

The first Spanish restaurant in Washington celebrates its 30th Anniversary this year with its delightful paellas and authentic Spanish cuisine.

1776 I Street NW
(entrance on 18th Street)
202.429.2200
alabardero.com



CHARLIE PALMER STEAK

Under the direction of Executive Chef Mike Ellis, the menu not only stars the best American artisanal beef cuts but locally-sourced seafood and handmade pasta.

101 Constitution Ave NW
202.547.8100
charliepalmersteak.com



Sights | THE GUIDE

Folger Shakespeare Library

Literature buffs need look no further than this treasure trove, which houses the largest collection of Shakespeare's works in the world. The library also regularly hosts performances including live theater, concerts and poetry readings and special exhibitions that bring Shakespeare's world to life. Through March 31, "First Chefs" explores the hard work of getting food from the farm to the table in Britain during the early modern age. Free. 201 E. Capitol St. SE, 202.544.4600, folger.edu

HISTORIC HOMES

DUMBARTON OAKS MUSEUM AND GARDENS

Site of the United Nations 1944 beginnings, a 19th-century manse plus Philip Johnson-designed pavilion. Library for Byzantine, pre-Columbian and garden studies. "Juggling the Middle Ages," more than 100 objects interpreting the timeless tale of a humble juggler struggling to find a gift worthy of the Virgin Mary, through Feb. 28. Gift shop. Museum: Tu-Su 11:30 am-5:30 pm. Ten-acre formal gardens: Tu-Su 2-6 pm. Museum free. Gardens \$10, seniors \$8, students/children (12 and under) \$5. Arrange in advance for guided tours. 1703 32nd St. NW, 202.339.6400

FREDERICK DOUGLASS NATIONAL HISTORIC SITE

Hilltop residence of the 19th-century orator and abolitionist, restored to its 1895 appearance with original objects. By guided tour only. Reserve in advance by calling or visiting website. Daily 9 am-5 pm. 1411 W St. SE, 202.426.5961 Metro: Anacostia

HILLWOOD ESTATE, MUSEUMS AND GARDENS

Cereal heiress Marjorie Merriweather Post's mansion and gardens, her czarist treasures, jewelry, portraits. Cafe and gift shop. "Fabergé

Rediscovered," new research casting fresh light on objects by the storied design house, through Jan. 13. Tu-Su 10 am-5 pm. \$18 suggested donation, seniors \$15, college students \$10, children (6-18) \$5, under 6 free. Park on site, or take a cab. Guided, audio and printed tours of mansion and gardens plus "special access" tours. 4155 Linnean Ave. NW (between Upton & Tilden sts.), 202.686.5807

MOUNT VERNON

George Washington's riverside estate, with 14 rooms furnished per a 1799 inventory. The first couple's tomb, gardens, a blacksmith shop, reconstructed slave cabin. High-tech Ford Orientation Center and Donald W. Reynolds Museum and Education Center, featuring "Be Washington" interactive experience, plus new film with 4-D effects. Check website for seasonal hours. \$20, seniors \$16, children (6-11) \$9, under 6 free. Discount packages available. Free parking. 3200 Mount Vernon Memorial Highway, Alexandria, Va., 703.780.2000

PRESIDENT LINCOLN'S COTTAGE

Restored retreat where Lincoln drafted the Emancipation Proclamation, site deemed a national mon-

ument by Bill Clinton in 2000. Tour guides with interactive tablet technology leading hour-long tours. Education center with ongoing free exhibits. Guided tours only, reservations online. "American By Belief," displaying the 16th U.S. president's little-known immigration policies, ongoing. M-Sa first tour 10 am, last tour 3 pm. Visitor Center M-Sa 9:30 am-4:30 pm; Su 10:30 am-4:30 pm. \$15, military \$12, children (6-12) \$5. 140 Rock Creek Church Road NW, 202.829.0436

TUDOR PLACE

Neoclassical (1816) Georgetown mansion, home of Martha Washington's granddaughter, and 5.5-acre gardens. National Historic Landmark with largest collection of George Washington's personal items other than at Mount Vernon. Garden tours (\$3). Guided tours on the hour. Tu-Sa 10 am-4 pm, Su noon-4 pm. \$10, seniors/college students/military \$8, students (5-17) \$3, under 5 free. Self-guided garden-only tour \$3. 1644 31st St. NW, 202.965.0400

NATIONAL LANDMARKS

AFRICAN-AMERICAN CIVIL WAR MEMORIAL AND MUSEUM

Bronzes depict African-American Union soldiers and

sailors; surrounding walls list 200,000 etched names of soldiers and officers. M 10 am-5 pm, Tu-F 10 am-6:30 pm, Sa 10 am-4 pm, Su noon-4 pm. 10th St. & Vermont Ave. NW; museum at 1925 Vermont Ave. NW, 202.667.2667 Metro: U St-Cardozo

ARLINGTON NATIONAL CEMETERY

Interred here, thousands of veterans and government personnel. Changing of the guards every half hour. Kennedy gravesites, Tomb of the Unknowns, Iwo Jima Memorial, Women in Military Service for America memorial, Arlington House. Daily 8 am-5 pm. Self-guided tours free; bus tour \$13.50, seniors (65+) \$10, military/veterans with ID/children (4-12) \$6.75, children with military \$3.75, military in uniform free. 214 McNair Road, Arlington, Va., 877.907.8585 Metro: Arlington Cemetery

FRANKLIN D. ROOSEVELT MEMORIAL

A 7.5-acre landscaped park of waterfalls and tableaux paying homage to the 32nd president. Bronze sculptures (some by George Segal) and bas-reliefs depicting Roosevelt, wife Eleanor and dog Fala plus scenes from the Depression through WWII. West Potomac Park along Basin

Sights

Drive SW, 202.426.6841 Metro: Smithsonian (half a mile)

JAPANESE AMERICAN MEMORIAL TO PATRIOTISM DURING WORLD WAR II

Sculpture of entrapped cranes honors Japanese-Americans interned during WWII and Japanese-American soldiers who died during that war. Accessible 24 hours. *Intersection of New Jersey Ave., Louisiana Ave. and D St. NW, 202.643.8204 Metro: Union Station*

JEFFERSON MEMORIAL

At the Tidal Basin, John Russell Pope's neoclassical marble monument for the third U.S. president and main author of the Declaration of Independence. Rangers every hour daily 9:30 am-10 pm. Bookstore. Parking (south side). *South end of 15th St. SW, 202.426.6841*

LIBRARY OF CONGRESS

World's largest library with more than 130 million books, manuscripts, objects. Gutenberg Bible, Thomas Jefferson's founding collection. "Baseball Americana" exploring the country's favorite pastime, from its origins to the science of winning, **ongoing**. M-Sa 8:30 am-4:30 pm. Tours. Free. *Jefferson Building, 10 First St. SE, 202.707.8000; James Madison Memorial Building, 101 Independence Ave. SE, 202.707.9779 Metro: Capitol South*

MARTIN LUTHER KING JR. NATIONAL MEMORIAL

Commemorating the life and work of the civil rights leader. A nearly 30-foot-high statue of King emerging from a granite block, the Stone of Hope, and inscription walls bearing his eloquent words. *Northwest corner of Tidal Basin at the intersection of West Basin Drive SW & Independence Ave. SW, 888.484.3373*

NATIONAL ARCHIVES

The "Charters of Freedom"—Bill of Rights, U.S. Constitution,

Declaration of Independence. Theater with free films. David M. Rubenstein Gallery, Visitor Orientation Plaza. "Remembering Vietnam," iconic and recently discovered records relating to 12 critical episodes in the Vietnam War; "Records of Rights," documents and interactive exhibit illustrating how Americans have debated citizenship, free speech, voting rights and equal opportunity, **both ongoing**. Daily 10 am-5:30 pm (Last admission at 5 pm). Gift shop. Free. *700 Pennsylvania Ave. NW (enter rotunda on Constitution Ave. NW), 877.874.7616 Metro: Archives-Navy Memorial*

NATIONAL MALL

Planner Pierre L'Enfant's grand landscape. All memorials free, 24 hours.

U.S. Capitol—Home of the U.S. Congress since 1800 (M-Sa 8:30 am-4:30 pm). See Visitor Centers listings for more info. *202.226.8000 Metro: Capitol South*
Washington Monument—World's tallest freestanding masonry structure with elevator (**closed until spring**). *15th St. NW, 202.426.6841 Metro: Smithsonian*
Lincoln Memorial—Greek-style temple with statue by Daniel Chester French. Visitors center. Gift shop. *South of Constitution Ave. NW at 23rd St., 202.426.6841 Metro: Foggy Bottom-GWU (1 mile)*
Korean War Veterans Memorial—The Pool of Remembrance, steel soldiers, granite relief. *Independence Ave. & Daniel French Drive SW, 202.426.6841 Metro: Foggy Bottom-GWU (1 mile)*

World War II Memorial—Neoclassical plaza dedicated to 400,000 American lives lost. *17th St. NW between Constitution & Independence aves., 202.426.6841 Metro: Smithsonian (five blocks)*
Vietnam Veterans Memorial—Maya Lin's memorial with more than 58,000 names of dead or missing soldiers, nurses. *Constitution Ave. NW between 21st & 22nd*

STAND IN FRONT OF HISTORY



Explore the gripping story of how news helped topple an oppressive regime. See eight sections of the original wall – the largest display of unaltered portions of the Berlin Wall outside Germany.

NEWSEUM

NEWSEUM.ORG

Discover the Cradle of the Emancipation Proclamation



"Best Museum off the Mall" (Washington City Paper 2017, 2018)

TripAdvisor Hall of Fame Certificate of Excellence

Guided tours daily, 362 days a year.

LincolnCottage.com
202.829.0436



PRESIDENT LINCOLN'S COTTAGE
Entrance at 140 Rock Creek Church Rd NW
Washington DC 20011



where
TO EXPLORE



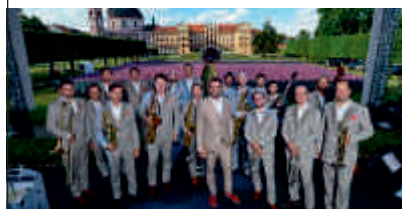
TRAVEL TIP No. 72: For the best views of Cinque Terre, avoid the train and take a boat from town to town. For more amazing destinations go to wheretraveler.com

wheretraveler.com

The Kennedy Center

Millennium Stage

A celebration of the human spirit



Free performances every day at 6 p.m.

No tickets required*

*Unless noted otherwise

Millennium Stage Presenting Sponsor:
CENTENE
Charitable Foundation

Brought to you by
Target
MARRIOTT FOUNDATION

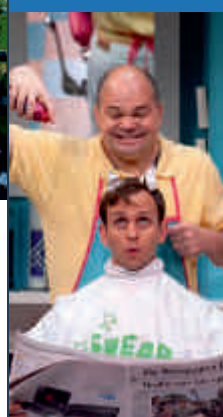
Kennedy-Center.org
(202) 467-4600

Groups call (202) 416-8400.

For all other ticket-related customer service inquiries, call the Advance Sales Box Office at (202) 416-8540.

Shear Madness

WASHINGTON'S HILARIOUS WHODUNIT!



Theater Lab

This wildly popular interactive comedy whodunit keeps the audiences laughing as they try to outwit the suspects and catch the killer. New clues and up to the minute improvisation deliver "shrieks of laughter night after night" (*Washington Post*).

NATIONAL ARCHIVES MUSEUM



CONSTITUTION AVENUE BETWEEN
7TH & 9TH STREETS NW

archives.gov/museum



Sights

sts., 202.426.6841 Metro: Foggy Bottom-GWU (1 mile)

PENTAGON

U.S. Dept. of Defense HQ and nerve center for command and control. On-site memorial (accessible 24 hours) dedicated to 184 lives lost there in the 9/11 attack. Tours M-Th 10 am-4 pm, F noon-4 pm. (No tours on federal holidays). Reserve online at least two weeks prior. Group tours. Free. *Army Navy Drive & Fern St., Arlington, Va., 703.697.1776 Metro: Pentagon*

SUPREME COURT

The nation's highest tribunal. Justices convene November through June in public sessions. M-F 9 am-4:30 pm. Free. When court isn't sitting, lectures on the half-hour from 9:30 am-3:30 pm. Cafeteria, gift shop. Plaza-level entrance facilitates security checks for entry. *First St. NE between Maryland Ave. & E. Capitol St., 202.479.3030 Metro: Capitol South*

U.S. HOLOCAUST MEMORIAL MUSEUM

By architect James Ingo Freed, America's only national memorial to genocide. More than 900 artifacts, 70 video monitors, four theaters, contemporary art and room for reflection. Daily 10 am-5:20 pm. Gift shop, cafe and library (M-F 10 am-5 pm) Free. *100 Raoul Wallenberg Place SW (14th St. main entry), 202.488.0400 Metro: Smithsonian*

THE WHITE HOUSE

Presidential residence from the time of John Adams. Photo opps from north and south gates. Self-guided public tour requests must be submitted through a member of Congress at least 21 days ahead. Tours Tu-Th 7:30 am-11:30 am, F-Sa 7:30 am-1:30 pm. See Visitor Centers listing for more information. *1600 Pennsylvania Ave. NW, 202.456.7041 Metro: McPherson Sq or Farragut West*

POINTS OF INTEREST

AIR FORCE MEMORIAL

Free performances by the U.S. Air Force Band and Honor Guard Drill Team plus wreath-laying ceremonies. See schedule online. *One Air Force Memorial Drive, Arlington, Va., 703.979.0674*

AMERICAN VETERANS DISABLED FOR LIFE MEMORIAL

Landscape architect Michael Vergason's star-shaped fountain with eternal flame book-ended by a grove of trees honoring men and women injured in combat. Inspirational quotes and profiles etched in glass and granite with bronze sculptures depicting the pain and courage of more than four million disabled veterans. Accessible 24 hours. *150 Washington Ave. SW, at 2nd and C sts. Metro: Federal Center SW*

BASILICA OF THE NATIONAL SHRINE OF THE IMMACULATE CONCEPTION

Dedicated to the Virgin Mary, the largest Roman Catholic basilica in North America and one of 10 largest churches in the world. Largest collection of contemporary ecclesiastical art in the world. Newly completed Trinity Dome Mosaic, with parts blessed by Pope Francis. Daily 7 am-6 pm. Tours: free audio or guided M-Sa 9-11 am and 1-3 pm, Su 1:30, 2:30 and 3:30 pm. Cafeteria, gift store, book shop, undercroft of more than 70 chapels and oratories. *400 Michigan Ave. NE, 202.526.8300 Metro: Brookland-CUA*

BELMONT-PAUL WOMEN'S EQUALITY NATIONAL MONUMENT

Now a feminist museum and library, Capitol Hill's oldest house (1798, with parts dating to 1680), the home of suffragette Alice Paul, drafter of the Equal Rights Amendment. Permanent galleries on suffrage origins and the contemporary cause. *W-Su 9 am-5 pm. Tours 9:30 am, 11 am, 2 pm and 3:30 pm. ADA*

accessible. Gift shop. Free. Entrance on 2nd St. next to Hart Senate Office Building. *2nd St. NE & Constitution Ave. NE, 202.546.1210 Metro: Union Station*

FORD'S THEATRE

Active stage and site of Lincoln's April 14, 1865 assassination by John Wilkes Booth. Museum artifacts like Lincoln's clothing and Booth's murder weapon, a derringer pistol. Petersen House museum and high-tech Center for Education and Leadership. Theater and museum open daily 9 am-4:30 pm. Free admission but ticket required (free, but \$3 fee for advance tickets). Show tickets same day at box office 8:30 am-5 pm. Advance tickets at www.ticketmaster.com or call 800.397.7328 (\$1.50 fee). *511 10th St. NW, 202.347.4833 Metro: Metro Center*

FRANCISCAN MONASTERY

Founded in 1899 by Franciscan friars, 42 acres of woods and landscaped gardens surrounding turn-of-the-century, Byzantine-style church modeled after Istanbul's Hagia Sophia. Guided tours showing replicas of the shrines of the Holy Land and Roman-style catacombs: M-Sa 10 am-noon and 1-3 pm, Su 1-3 pm. Seasonal garden tours. Free. Virtual tour online. Gift shop. *1400 Quincy St. NE, 202.526.6800*

INTERNATIONAL SPY MUSEUM

Artifacts like a WWII German Enigma cipher and an East German camera for seeing through walls. Exhibits on spy rings of World War II, Cold War spy games, intel training. "Operation Spy," guests assuming the role of an agent in a one-hour mission inside the museum. "Spy in the City," guests using a GPS-enabled tablet to uncover espionage-related secrets outside the museum. Hours vary. Check website for current schedule. \$21.95, seniors/military/intelligence (with ID)

\$15.95, children 7-11 \$14.95, under 6 free. Spy store. *800 F St. NW, 202.393.7798 Metro: Gallery Pl-Chinatown*

MADAME TUSSAUDS

Touchable wax figures and photo opps with The Beatles, Madonna, Babe Ruth, Stephen Colbert, the Duke and Duchess of Cambridge, Marilyn Monroe, Justin Bieber, Taylor Swift. Presidents Gallery with all U.S. presidents plus first ladies. Hours vary. Check website for updated schedule. \$22, children (4-12) \$17.50. *1025 F St. NW (corner of 10th & F sts.), 866.823.9565 Metro: Metro Center*

NATIONAL ACADEMY OF SCIENCES

Organization promoting science has exhibitions and Robert Berks's larger-than-life Einstein memorial statue inside. M-F 8:30 am-5 pm. Free. Photo ID required. *2101 Constitution Ave. NW, 202.334.2000*

NATIONAL BUILDING MUSEUM

Former U.S. Pension Building (1887) showcasing architecture, engineering, construction trades and design. "Flickering Treasures," a look at Baltimore's movie theaters from 1896 to the present through photographs by award-winning Baltimore Sun photojournalist Amy Davis, architectural artifacts and theater objects; "PLAY WORK BUILD," a hands-on block play area with digital interaction allowing visitors to move an entire wall of virtual blocks, **both ongoing**. M-Sa 10 am-5 pm, Su 11 am-5 pm. \$10, seniors/students/youth \$7. Building tours daily at 11:30 am, 12:30 pm, 1:30 pm. Cafe and gift shop. *401 F St. NW, 202.272.2448 Metro: Judiciary Square*

NATIONAL GEOGRAPHIC MUSEUM

At the Society's HQ, galleries plus Explorers Hall for exhibits, lectures. "Titanic: The Untold Story," the recently declassified tale about a secret Cold War mission and the 1985

discovery of the famous ship; "Tomb of Christ," immersive 3-D exhibit "transporting" visitors to Jerusalem for an in-depth look at this sacred structure, **both ongoing**. Daily 10 am-6 pm. \$15, seniors/military/students \$12, kids (5-12) \$10, under 5 free. 3-D movie \$7. Gift shop. *1145 17th St. NW, 202.857.7700 Metro: Farragut North or Farragut West*

NATIONAL INVENTORS HALL OF FAME AND MUSEUM

In the U.S. Patent and Trademark Office, museum capturing America's imaginative spirit through exhibits on patent and trademark systems. Interactive gallery displaying 500-plus inventors and their stories, plus a 1965 Ford Mustang merged with a 2015 model showing how inventions drive technology. Group tours upon request. Gift shop. M-F 10 am-5 pm, Sa 11 am-3 pm. Free. *600 Dulany St., Alexandria, Va., 571.272.0095*

NEWSEUM

Venue lauding the First Amendment. Sections of the Berlin Wall and historic front pages from the Civil War, plus 15 theaters and galleries and 130 interactive stations. Pulitzer-Prize photo winners, 9/11 memorial gallery, daily displays of front pages from every U.S. state. New media gallery tracing the digital news revolution. "Pictures of the Year," decades of award-winning photos, **ongoing**. M-Sa 9 am-5 pm, Su 10 am-5 pm. \$24.95, seniors \$19.95, children (7-18) \$14.95, ages 6 and under/museum members free. Discounts for military/students with ID. *555 Pennsylvania Ave. NW, 888.639.7386 Metro: Archives-Navy Memorial*

ROCK CREEK PARK

One of the country's earliest, urban national parks, a 2,000-acre wooded oasis following its namesake waterway through the heart of the city. Shady paved trails drawing bikers, jogger, skaters. Also

tennis courts, golf course, stables and planetarium/nature center (W-Su, 9 am-5 pm) with ranger-led tours. Free (fees for some activities). *Nature Center and Planetarium, 5200 Glover Road NW, 202.895.6070*

U.S. BOTANIC GARDEN

North America's oldest botanic garden. Art Deco-era conservatory, jungle area, orchid house. Rotating exhibitions. "Seasons Greenings," model train and set including iconic D.C. buildings, made of natural materials, **through Jan. 1**. Daily 10 am-5 pm. Free. *100 Maryland Ave. SW, 202.225.8333 Metro: Federal Center SW*

U.S. NATIONAL ARBORETUM

A 446-acre site with specialty gardens, the former U.S. Capitol columns, Arbor House Gift Shop and the National Bonsai & Penjing Museum (F-M 10 am-4 pm). Visitor Center F-M 8 am-4:30 pm. Grounds F-M 8 am-5 pm. Free. Visit by car recommended. *3501 New York Ave. NE, 202.245.2726*

SMITHSONIAN INSTITUTION

AFRICAN AMERICAN HISTORY AND CULTURE MUSEUM

LEED edifice wrapped in metal panels evoking a Yoruban crown and iron-work crafted by "invisible" slaves. Harriet Tubman's hymnal, Emmett Till's casket, Chuck Berry's Cadillac. Oprah Winfrey Theater, Contemplative Court with waterfall. Cafe. Timed-entry passes required. Reserve ahead online. Some same-day passes (four per visitor) online daily and at Visitor Services (one per visitor) weekdays. Daily 10 am-5:30 pm. Free. *1400 Constitution Ave. NW, 844.750.3012*

AIR AND SPACE MUSEUM

World's largest collection of aircraft and space vehicles (Lindbergh's Spirit of St. Louis, Bell X-1). Apollo Lunar Module and Enterprise studio model from "Star Trek" TV series.

(Some galleries closed for renovation. Check website for updated details.) Lockheed Martin IMAX Theater and Albert Einstein Planetarium daily from 10:30 am. Pulseworks VR Transporter (\$), virtual reality ride. Daily 10 am-5:30 pm. Tours 10:30 am and 1 pm. Free. IMAX and planetarium shows: \$9, seniors \$8, children \$7.50 (prices higher for new releases). Gift shop. Food court. *6th St. & Independence Ave. SW, 202.633.2214 Metro: L'Enfant Plaza*

AIR AND SPACE MUSEUM UDVAR-HAZY CENTER

National Air and Space Museum's hangar-like facility displaying 160-plus aircraft. The Enola Gay (first to drop an atomic bomb) and space shuttle Discovery. IMAX theater, flight simulations (fee). Daily 10 am-5:30 pm. Free. IMAX tickets: \$9, seniors \$8, children (2-12) \$7.50. Theater info: 866.868.7774. Parking (\$15) or Fairfax Connector No. 983 between Dulles Airport and museum. *14390 Air and Space Museum Parkway, Chantilly, Va., 202.633.1000*

AMERICAN HISTORY MUSEUM

National repository of cultural, scientific and technological heritage. Thomas Jefferson's desk, Julia Child's kitchen, restored Dorothy's ruby slippers back on view. The Star-Spangled Banner gallery holding the restored flag. **Ongoing**: "The First Ladies," gowns and memorabilia from presidencies past. Daily 10 am-5:30 pm. Free. Gift shops, ice cream parlor, cafeteria. *14th St. & Constitution Ave. NW, 202.633.1000 Metro: Smithsonian*

AMERICAN INDIAN MUSEUM

Curvilinear building of golden-hued limestone facing the rising sun in keeping with Native American traditions. Tribal exhibitions. Interactive imagiNATIONS Activity Center with hands-on projects like weaving a giant basket. "Trail of Tears: A Story of Cherokee Removal," an unflinching look

at the reality of this disturbing chapter in American history, from the Cherokee perspective; "Americans," exploring how American Indians are woven into the nation's identity from popular culture to street names and beyond, **both ongoing**. Daily 10 am-5:30 pm. Free. Groups reserve timed entry. Gift shops, two theaters, Mitsitam Cafe. *4th St. & Independence Ave. SW, 202.633.1000 Metro: L'Enfant Plaza*

ANACOSTIA COMMUNITY MUSEUM

Devoted to activism, urban communities and African-American heritage. "Your Community, Your Story: Celebrating Five Decades of the Anacostia Community Museum, 1967-2017," signature projects from past displays, **through Jan. 6**. "A Right to the City," exploring the history of D.C.'s changing neighborhoods, **ongoing**. Daily 10 am-5 pm. *1901 Fort Place SE, 202.633.4820*

THE CASTLE

The first Smithsonian building with info center, cafe, James Smithson's crypt and samples from the collection and exhibits. Daily 8:30 am-5:30 pm, Haupt Garden (south side) daily 6:30 am-dusk. Free. *1000 Jefferson Drive SW, 202.633.1000 Metro: Smithsonian*

NATIONAL POSTAL MUSEUM

Former main post office, now museum of artifacts multimedia stations and exhibits. "John Lennon: The Green Album," the musician's childhood stamp collection containing more than 500 stamps, **through Feb. 3**. Daily 10 am-5:30 pm. Free. Special workshops, welcome center, gift shop and post office. *2 Massachusetts Ave. NE, 202.633.1000 Metro: Union Station*

NATIONAL ZOO

Founded in 1889, a 163-acre zoo with more than 2,000 animals including giant pandas Tian Tian and Mei Xiang and their cub Bei Bei. Asia Trail with giant

sloths. American Trail with sea otters. Solar-powered carousel (\$3). Check website for seasonal hours. Free entry; parking \$22. *3001 Connecticut Ave. NW, 202.673.4888 Metro: Cleveland Park (downhill to zoo) or Woodley Park-Zoo (uphill to zoo)*

NATURAL HISTORY MUSEUM

Exhibits tracking the natural world since prehistoric time. In the Rotunda, taxidermic African elephant in a replica Angolan habitat. Hall of Geology, Gems and Minerals (Hope Diamond). Butterfly Pavilion (\$6, \$5.50 seniors, \$5 children; free, tickets required). "Outbreak: Epidemics in a Connected World," a 4,250-sq.-ft. exhibit exploring the causes and struggles to contain the spread of deadly diseases around the world, **ongoing**. Daily 10 am-5:30 pm. Free. IMAX theater (\$8, seniors/children \$6.50). Cafe and gift shop. *Constitution Ave. at 10th St. NW, 202.633.1000 Metro: Federal Triangle or Smithsonian*

VISITOR CENTERS

U.S. CAPITOL VISITOR CENTER

Entry to the U.S. Capitol with exhibits, artifacts, interactive kiosks. M-Sa 8:30 am-4:30 pm. Guided one-hour Capitol tours (M-Sa 8:50 am-3:20 pm) begin with a 13-minute film. Free. Admission to the House or Senate galleries issued by a constituent's representative or senator. Some same-day passes at the CVC information desks. *Below the East Plaza of the Capitol between Constitution & Independence aves., 202.226.8000 Metro: Capitol South*

WHITE HOUSE VISITOR CENTER

Interactive exhibits, photos and videos about the famed residence and its occupants. Free. Gift shop. Daily 7:30 am-4 pm. *1450 Pennsylvania Ave. NW, 202.208.1631 Metro: Farragut West*



Washington Capitals

Washington's hometown NHL heroes hold court at downtown's Capital One Arena. This season, fans have even more reason to rock the red, as Alex Ovechkin leads his teammates in defending their hard-won Stanley Cup title. This month, the Caps face off against the Philadelphia Flyers **Jan. 8**, the Columbus Blue Jackets **Jan. 12**, St. Louis Blues **Jan. 14**, New York Islanders **Jan. 18** and the San Jose Sharks **Jan. 22**. Times/prices vary. 601 F St. NW, 202.628.3200, nhl.com/capitals

BARS & LOUNGES

2 BIRDS 1 STONE

Under Doi Moi restaurant, an intimate cocktail den with six selections that rotate regularly. Also bar bites like Vietnamese dumplings from upstairs. T-Th 6 pm-12:15 am, F-Sa 6 pm-1:15 am, 1800 14th St. NW (entrance on S St.) Metro: U St-Cardozo

BARMINI

Adjoining his experimental Minibar, celeb chef José Andrés' sleek cocktail spot with 100-plus original creations and fresh takes on classics. Reservations recommended. Tu-Sa from 5:30 pm. 501 9th St. NW, 202.393.4451 Metro: Archives or Gallery Pl-Chinatown

BLUEJACKET

In a 1919 U.S. Navy factory, a buzzing brewery headed by Greg Engert. Traditional techniques combined with experimentation produce a rotating selection of 20 beers and five cask ales. On-site bar, tasting room, shop and Arsenal restaurant. Su-Th 11 am-1 am, F-Sa till 2 am. Tours and tastings F-Sa by reservation (\$29-\$35). 300 Tingey St. SE, 202.524.4862 Metro: Navy Yard

COLUMBIA ROOM

Spirits guru Derek Brown's acclaimed cocktail bar, featuring three different spaces. Tasting room (by reservation)

with seasonal drinks and amuse-bouches, spirits library (a la carte menu) and terrace. Tu-Th 5 pm-12:30 am, F-Sa till 1:30 am. 124 Blagden Alley NW, 202.316.9396 Metro: Mt. Vernon Sq-Convention Center

RI RA IRISH PUB

Decor from Ireland and live band most nights contributing a lively atmosphere for pub fare. Guinness, whiskey bar. M-Th 11 am-2 am, F till 3 am, Sa 10 am-3 am, Su 10 am-2 am. 3125 M St. NW, 202.751.2111

SHELLY'S BACK ROOM

For cigar aficionados, a casual but elegant tavern with air-ventilation system. Lunch, dinner and late-night menus plus premium cigars and rare whiskeys. M-Th 11:30 am-2 am, F 11:30 am-3 am, Sa noon-3 am, Su noon-1 am. 1331 F St. NW, 202.737.3003 Metro: Metro Center

COMEDY

THE CAPITOL STEPS

Congressional staffers satirizing politics and life inside the Beltway. Shows at Ronald Reagan Building Amphitheater and International Trade Center. F-Sa at 7:30 pm. \$36. 1300 Pennsylvania Ave. NW, 202.312.1555 Metro: Federal Triangle

CONCERTS & OPERA

Select shows listed; see venue websites for full schedules.

CAPITAL ONE ARENA

Penn Quarter/downtown arena for sports (NBA Wizards, NHL Capitals) and shows. Justin Timberlake, **Jan. 4**; Panic at the Disco!, **Jan. 20**; Monster Jam, **Jan. 26-27**. 601 F St. NW, 202.628.3200 Metro: Gallery Pl-Chinatown

KENNEDY CENTER

A living memorial to John F. Kennedy. Washington National Opera: "Taking Up Serpents," new opera about the daughter of a preacher bit by his own snakes, **Jan. 11-13**; National Symphony Orchestra: Renée Fleming sings Schubert, **Jan. 18-20**; NSO Pops: "Star Wars: Return of the Jedi," film with live orchestra, **Jan. 22-24**; NSO Pops: An Evening with Brandy, **Jan. 25-26**; NSO: Trifonov plays Beethoven's "Emperor," **Jan. 3-Feb. 2**. Free shows daily (6 pm) on Millennium Stage. Also cafe, restaurant, gift shops, free tours and roof terrace. 2700 F St. NW, 202.467.4600 Metro: Foggy Bottom-GWU (free shuttle to/from venue)

WOLF TRAP

America's only national park for the performing arts. Music and dance at Filene Center

with open-air pavilion, lawn for picnicking with food brought or purchased there. Arnaud Sussmann, Paul Neubauer and David Finckel, **Jan. 11**; The Verve Pipe, **Jan. 12**; Toots & The Maytals, **Jan. 16**; John Oates with The Good Road Band, **Jan. 17**; Bumper Jacksons, **Jan. 25**. 1551 Trap Road, Vienna, Va., 703.255.1900 Metro: West Falls Church (then Metro bus to venue)

MUSIC CLUBS

Select shows listed; see venue websites for full schedules.

9:30 CLUB

Frequent winner of nightclub of the year. Visit the Back Bar early for first entry into shows. Ozomatli, **Jan. 3**; The Wood Brothers, **Jan. 17-18**; Cracker and Camper Van Beethoven, **Jan. 19**; Guster, **Jan. 25-26**; Rainbow Kitten Surprise, **Jan. 28-29**; Amen Dunes, **Jan. 31**. 815 V St. NW, 202.265.0930 Metro: U St-Cardozo

THE ANTHEM

Concert venue on The Wharf waterfront redevelopment for big-name rock/pop and indie stars. State-of-the-art sound system, multilevel tiers, bars. DC101 Meltdown, **Jan. 10**; The Revivalists, **Jan. 11**; A\$AP Rocky, **Jan. 20**; Kacey Musgraves, **Jan. 24**; The Disco Biscuits, **Jan. 26**. 901 Wharf St. SW, 202.888.0020 Metro: Waterfront

BLACK CAT

Booking indie rockers for the upstairs Mainstage and the smaller downstairs Backstage (often local bands). Also DJ and theme nights, pinball machines, a bar and a cafe with vegan options. Jon Spencer & The Hitmakers, **Jan. 12**; Mineral, **Jan. 17**. 1811 14th St. NW, 202.667.4490 Metro: U St-Cardozo

BLUES ALLEY

Tucked in a Georgetown alley, legendary jazz supper club showcasing artists like Dizzy Gillespie and Charlie Byrd since 1965. Chris Thomas King, **Jan. 3-6**; Jose Andre Trio, **Jan. 8**; Terence Blanchard & the E-Collective, **Jan. 10-13**; Tiffany Lloyd, **Jan. 15**; Dave Kline Band, **Jan. 21**; Lenore Raphael, **Jan. 23**; Roy Ayers, **Jan. 24-27**; Rose Moraes, **Jan. 28**; Corey Harris, **Jan. 31**. 1073 Wisconsin Ave. NW, 202.337.4141

MADAM'S ORGAN

Find live music nightly at this rowdy Adams Morgan bar where redheads get a half-price drink special. Pool tables, karaoke and rooftop bar. One Nite Stand (reggae, funk, R&B) every Monday, Clusterfunk Tuesday, The Human Country Jukebox country music W, The Johnny Artis Band Th. M-Th, Su 5 pm-2 am, F-Sa till 3 am. 2461 18th St. NW, 202.667.5370

PEARL STREET WAREHOUSE

Intimate space for established and emerging rock, country, folk, soul, bluegrass and R&B acts. American diner fare. The All-Star "Graceland" Tribute Band with Bakithi Kumalo & Ryan Tennis, **Jan. 5**; Americana Night with Drew Gibson (free), **Jan. 10**; Bobby Thompson Trio & The Ron Holloway Trio, **Jan. 11**; Rock n' Soul Night with Mitchell Ferguson and Bryan Cherry (both of "The Voice," free), **Jan. 24**; The Walkaways, **Jan. 25**. The Wharf, 33 Pearl St. SW, 202.380.9620 Metro: Waterfront

RECREATION

ESCAPE ROOM LIVE

Teams of players testing their wits to escape locked rooms filled with clues, riddles and red herrings (in 45 minutes). Themes from spies to mummies. \$28. Reservations required. 2300 Wisconsin Ave. NW, 800.616.4880; 814 King St., 2nd floor, Alexandria, Va., 800.616.4880; 3345 M St. NW, 800.616.4880

SPORTS

WASHINGTON WIZARDS

D.C.'s NBA team on its home court. Atlanta Hawks, **Jan. 2**; Philadelphia 76ers, **Jan. 9**; Milwaukee Bucks, **Jan. 11**; Toronto Raptors, **Jan. 13**; Detroit Pistons, **Jan. 21**; Golden State Warriors, **Jan. 24**; Indiana Pacers **Jan. 30**; Capital One Arena, 601 F St. NW, 202.628.3200. Metro: Gallery Pl-Chinatown

THEATER & DANCE

ADVENTURE THEATRE

Family-friendly performances in Glen Echo Park. "Fancy Nancy's Splendiferous Christmas," based on the book about a young girl's plans for an upscale holiday, **through Jan. 6**. 7300 MacArthur Blvd., Glen Echo, Md., 301.634.2270

ARENA STAGE

Classic and contemporary productions in an architecturally striking complex by the water. Catwalk Cafe features dishes inspired by current shows. "Kleptocracy," Kenneth Lin's Soviet Union drama charting the rise of Oligarchs and Vladimir Putin's path to power, **Jan. 18-Feb. 24**. 1101 6th St. SW, 202.488.3300 Metro: Waterfront

FOLGER THEATRE

At Folger Shakespeare Library, an Elizabethan-style theater presenting classic plays and concerts. "Nell Gwynn," an orange seller turned theater star draws the attention of the king and becomes his favorite mistress, **Jan. 29-March 10**. 201 E. Capitol St. SE, 202.544.7077 Metro: Capitol South

FORD'S THEATRE

Historic venue where Lincoln was assassinated. On-site museum opens one hour before curtain (and for daytime visits). "Twelve Angry Men," the classic drama about jurors at odds over a murder trial, **Jan. 18-Feb. 17**. 511 10th St. NW, 202.347.4833 Metro: Metro Center

KENNEDY CENTER

A living memorial to John F. Kennedy. "Miss Saigon," the award-winning musical love story about a young Vietnamese woman and an American soldier during the Vietnam War in a new production, **through Jan. 13**; "The Play That Goes Wrong," the London hit comedy about a murder, **through Jan. 6**; Matthew Bourne's New Adventures: "Cinderella," a twist on the classic fairy tale, **Jan. 15-20**; American Ballet Theatre: "Harlequinade," **Jan. 29-Feb. 3**; "Shear Madness," long-running who-dunit comedy with audience playing detective, **ongoing**. Free shows daily (6 pm) on Millennium Stage. Also cafe, restaurant, gift shops, free tours and roof terrace. 2700 F St. NW, 202.467.4600 Metro: Foggy Bottom-GWU (free shuttle to/from venue)

MOSAIC THEATER COMPANY

Presenting thought-provoking works that grapple with social and political issues. "Oh, God," psychotherapist and single mother of an autistic child gets a new heaven-sent patient, **through Jan. 13**; "Shame," documentary portrayal of the controversy surrounding a play in Haifa, **Jan. 30-Feb. 17**. Based at the Atlas Performing Arts Center. 1333 H St. NE, 202.399.7993

NATIONAL THEATRE

Landmark playhouse opened in 1835, now with Broadway shows, musicals. "School of Rock," Andrew Lloyd Webber's toe-tapping adaptation of the rockin' film about an out-of-work musician who pretends

to be a substitute teacher so he can enter a rock contest, **Jan. 16-27**. 1321 Pennsylvania Ave. NW, 202.628.6161 Metro: Metro Center

SHAKESPEARE THEATRE COMPANY

Led by artistic director Michael Kahn, this company has two downtown stages for works by the Bard and other playwrights. "The Panties, the Partner and the Profit: Scenes from the Heroic Life of the Middle Class," David Ives' adapting Carl Sternheim's trilogy to today to hilarious effect, **through Jan. 6**. Harman, 610 F St. NW, 202.547.1122 Metro: Gallery Pl-Chinatown

SIGNATURE THEATRE

Contemporary plays and musicals; winner of the 2009 Regional Theater Tony Award. "Billy Elliot," heartwarming musical about an 11-year-old boy who dreams of being a ballet dancer, **through Jan. 6**; "Ain't Misbehavin'," the Tony Award-winning musical with a finger-snapping playlist of Thomas "Fats" Waller hits, **Jan. 23-March 10**. 4200 Campbell Ave., Arlington, Va., 703.820.9771

STUDIO THEATRE

Acclaimed venue for bold plays. "Admissions," Joshua Harmon's look at privilege and power in a progressive mid-tier New Hampshire boarding school, **Jan. 16-Feb. 17**. 1501 14th St. NW, 202.332.3300 Metro: Dupont Circle (five blocks)

WOOLLY MAMMOTH THEATRE

Unconventional plays of ideas. "The Second City's She the People," the sketch comedy company's take on female empowerment, **through Jan. 6**. 641 D St. NW, 202.393.3939 Metro: Gallery Pl-Chinatown



Walter E. Washington Convention Center

With 2.3 million square feet of space and the largest ballroom in the region, this center hosts some top events. It also happens to be home to the largest public art collection in the District. Inside, find more than 120 works by renowned artists including Sam Gilliam, Kendall Buster, Larry Kirkland and Costas Varotsos, plus over half coming from creatives living and working in the local area. Free. 801 Mount Vernon Place, 202.249.3000, dcconvention.com

ALTERNATIVE SPACES

ANACOSTIA ARTS CENTER

Nonprofit with a cafe, theater, boutiques, several art galleries. Tu-Sa 10 am-7 pm, Su 10 am-3 pm. Some events free. 1231 Good Hope Road SE, 202.631.6291

ARLINGTON ARTS CENTER

For more than 40 years, a venue addressing issues promoting social change. Open studios and solo shows. W-Su noon-5 pm. Free. 3550 Wilson Blvd., Arlington, Va., 703.248.6800 Metro: Va. Square-GMU

EMBASSY OF AUSTRALIA

Juried shows of works by artists with Down Under connections. M-F 10 am-2 pm. Free. Show photo I.D. Also films. 1601 Massachusetts Ave. NW, 202.797.3000

EMBASSY OF CANADA

In an important Pennsylvania Ave. NW structure across from National Gallery of Art and just down the street from the U.S. Capitol, exhibitions on the history and fine arts of Canada. Free. M-F 9 am-5 pm. 501 Pennsylvania Ave. NW 202.448.6391

HOUSE OF SWEDEN

The crown jewel of the Swedish U.S. presence opened in 2006 on the Georgetown waterfront,

home of the Embassy of Sweden and trade representatives. M-F 9 am-5 pm. 2900 K St. NW, 202.536.1500 Metro: Foggy Bottom

TORPEDO FACTORY ART CENTER

World War II munitions plant, now three floors of artist studios, plus archaeology museum, galleries. Free. Most open daily 10 am-6 pm, Th 10 am-9 pm. Artist-led tours 1 pm. 105 N. Union St., Alexandria, Va., 703.838.4565

WASHINGTON SCULPTORS GROUP

Since 1984, nonprofit group with 400 members (artists, collectors, curators) highlighting sculptural works. Exhibits at various locations. Check website for details, 202.686.8696

ART GALLERIES

ADAH ROSE GALLERY

Intimate gallery for contemporary regional art, especially text-based projects. Openings often with live music. Hours vary. Check website for latest. 3766 Howard Ave., Kensington, Md., 301.922.0162

CROSS MACKENZIE

Fine art with a focus on ceramics in charming Georgetown space with sculpture garden. Tu-Sa noon-

5 pm. 1675 Wisconsin Ave. NW, 202.337.7970

DTR MODERN GALLERIES

In Georgetown, contemporary and 20th-century masters from a privately held collection of works by artists like Picasso, Dali, Botero, Mars, Warhol, Basquiat, Hirst. Mon.-Sat. 11 a.m.-7 p.m., Sun. noon-7 p.m. 2820 Pennsylvania Ave. NW, 202.338.0625

HEMPHILL FINE ARTS

Celebrating 20-plus years showing contemporary and historically significant artists like Caldwell and late "father figures" Jacob Kainen and Willem de Looper. Tu-Sa 10 am-5 pm. 1515 14th St. NW, 202.234.5601

MARSHA MATEYKA

In a Dupont Circle town house, contemporary art since 1983. Representing Jim Sanborn, Sam Gilliam, Jae Ko, Kitty Klaidman, Athena Tacha, William T. Wiley and estates of Nathan Oliveira and Gene Davis. Th 11 am-5 pm, other days by appt. 2012 R St. NW, 202.328.0088 Metro: Dupont Circle (North)

TRANSFORMER

Nonprofit Warhol grantee project site for collaborating artists, scientists, poets, musicians, storytellers. W-Sa

noon-6 pm. 1404 P St. NW, 202.483.1102

ZENITH

Gallery celebrating 40 years of exhibitions, showing whimsical, figurative work in all media, some sited in a sculpture garden in former swimming pool, where varied works create a "wonderland." W-Sa noon-6 pm or by appointment. 1429 Iris St. NW, 202.783.2963

ART MUSEUMS

AMERICAN UNIVERSITY MUSEUM AT THE KATZEN

Dramatic building with museum and performance spaces of American University. Three floors of changing exhibitions by Washington and international artists. Tu-Su 11 am-4 pm. Free. Gift shop and cafe. Ward Circle, 4400 Massachusetts Ave. NW, 202.885.1300

ARTECHOUSE

Gallery space for forward-thinking computerized, immersive art exhibitions. Daily 10 am-5 pm; 5:30-10 pm and 11 pm (ages 21 and over only). \$15, seniors/students/military \$12, under 12 \$8. Tickets available online. 1238 Maryland Ave. SW, no phone

NATIONAL GALLERY OF ART/ EAST BUILDING

I.M. Pei-designed museum holds modern and contemporary American and European paintings, sculptures, prints by Matisse, Stella, Warhol and Picasso. Renovated with more space, skylight tower galleries highlighting works by Alexander Calder, Mark Rothko. Roof terrace with sculptures and views of the Capitol. Villareal LED passage to West Building. "Rachel Whiteread," the first comprehensive survey of the influential British sculptor's work, through Jan. 13. "Gordon Parks: The New Tide, Early Work 1940-1950" highlighting the self-taught photographer's formative decade with 150 photos and materials, through Feb. 18. M-Sa 10 am-5 pm, Su 11 am-6 pm. Free. Gift shop and cafes. Constitution Ave. NW between 3rd & 4th sts., 202.737.4215 Metro: Archives-Navy Memorial

NATIONAL GALLERY OF ART/ WEST BUILDING

One of the world's finest collections of American and European paintings and sculpture dating from the 13th century, including "Ginevra de' Benci," this hemisphere's only da Vinci painting. "Gordon Parks: The New Tide, 1940-1950," 150 photographs and other materials illustrating his influences, through Feb. 18. M-Sa 10 am-5 pm, Su 11 am-6 pm. Free. Gift shop, cafés, sculpture garden. Constitution Ave. NW between 4th & 7th sts., 202.737.4215 Metro: Archives-Navy Memorial

NATIONAL MUSEUM OF WOMEN IN THE ARTS

Pioneering museum dedicated to female artists with 4,500-plus works by, among others, Mary Cassatt, Frida Kahlo and Alma Thomas. "Rodarte," more than 90 complete outfits presented as shown on the runway, highlighting the work of the Mulleavy sisters, through Feb. 10. M-Sa 10 am-5 pm, Su noon-5 pm. \$10, students/sen-

iors \$8, 18 and under free. Free admission on "Community Days," the first Sunday of each month. Mezzanine Cafe with soups, salads, sandwiches. M-F 11 am-2 pm. New York Ave. & 13th St. NW, 202.783.5000 Metro: Metro Center

THE PHILLIPS COLLECTION

The country's first museum of modern art (1921) provides an intimate setting for a renowned collection: Renoir, Cézanne, Bonnard, Matisse, Daumier, Manet, El Greco, Miró, Monet, O'Keeffe and Picasso. Laib Wax Room, beeswax-lined niche accommodating two visitors at a time by Wolfgang Laib. "Nordic Impressions," representing the works of 53 artists spanning 200 years of Nordic art, through Jan. 13. Tu-Sa 10 am-5 pm, Th until 8:30 pm, Su noon-7 pm. Special exhibition, weekend admission: \$12. Permanent collection free weekdays with suggested donation. Gift shop. 21st & Q sts. NW, 202.387.2151 Metro: Dupont Circle (North)

SMITHSONIAN INSTITUTION

AMERICAN ART MUSEUM

National collections from folk art to LED installations and one gallery dedicated to video and time-based artwork. "Between Worlds: The Art of Bill Traylor," 155 of the self-taught artist's works illustrating his first-hand view of history, from slavery to Reconstruction and the dawn of the Civil Rights Movement, ongoing. Daily 11:30 am-7 pm Gift shop. Kogod Courtyard with Norman Foster-designed canopy, free Wi-Fi and a cafe until 6:30 pm. 8th & F sts. NW, 202.633.1000 Metro: Gallery Pl-Chinatown

ANACOSTIA COMMUNITY MUSEUM

Devoted to activism, urban communities and African-American heritage. "Your Community, Your Story: Celebrating Five Decades of the Anacostia Community Museum, 1967-2017," sig-

nature projects from past displays; "A Right to the City," exploring the history of D.C.'s changing neighborhoods, both ongoing. Daily 10 am-5 pm. 1901 Fort Place SE, 202.633.4820

ARTHUR M. SACKLER GALLERY

Recently reopened space featuring a number of newly installed collections. In a dramatic underground building, Asian and Near Eastern artworks spanning 6,000 years. "Japan Modern: Photography from the Gloria Katz and Willard Huyck Collection," pictures dating from the 1880s to 2015 tracing the development of this medium in the Land of the Rising Sun, through Jan. 24. Daily 10 am-5:30 pm. Gift shop. 1050 Independence Ave. SW, 202.633.1000 Metro: Smithsonian

FREER GALLERY

Recently reopened featuring reimagined spaces for displaying Eastern and South Asian and Islamic art in an Italian-style villa. James McNeill Whistler's "The Peacock Room Comes to America" restored to its original 1908 appearance. Daily 10 am-5:30 pm. Films, gift shop. Jefferson Drive and 12th St. SW, 202.633.1000 Metro: Smithsonian

HIRSHHORN MUSEUM AND SCULPTURE GARDEN

Designed by Gordon Bunshaft, doughnut-shaped building holds Joseph H. Hirshhorn's gift collection plus later acquisitions. Works by Dubuffet, Picasso, Rothko, Calder, Warhol and current stars. "Sean Scully: Landline," the artist's watercolors, oils and sculptures transforming the museum's second-level inner circle galleries, ongoing. Daily 10 am-5:30 pm. Sculpture Garden (7:30 am-dusk). Tours weekdays at 12:30 and 3:30 pm. 7th St. & Independence Ave. SW, 202.633.1000 Metro: L'Enfant Plaza-Smithsonian

NATIONAL MUSEUM OF AFRICAN ART

Sub-Saharan African art: masks, textiles, regalia, furniture, ceramics. "Good As Gold: Fashioning Senegalese Women," in a redesigned first-floor space, glittering collection of the country's jewelry past and present and how the pieces were used to express complex notions of beauty, ongoing. Daily 10 am-5:30 pm. Gift shop. 950 Independence Ave. SW, 202.633.4600 Metro: Smithsonian

NATIONAL PORTRAIT GALLERY

Famed visages throughout U.S. history. Only complete collection of presidential portraits outside the White House. "Unseen: Our Past in a New Light, Ken Gonzales-Day and Titus Kaphar," highlighting under- and misrepresented minorities in portraiture; "One Year: 1968, An American Odyssey," looking back at an important year in history, when the museum opened, the Civil Rights Act was signed and the Vietnam War reached a turning point, both ongoing. Daily 11:30 am-7 pm. Gift shop, cafe. Eighth & F sts. NW, 202.633.1000 Metro: Gallery Pl-Chinatown

RENWICK GALLERY

Revamped Second Empire-style museum across from White House designed by James Renwick Jr. in 1859 and rescued by Jacqueline Kennedy. American fine crafts, plus modern works. "Disrupting Craft: Renwick Invitational 2018," four artists challenging conventional ideas about craft, through May 5; "No Spectators: The Art of Burning Man," large-scale works from the annual boho gathering in Nevada's Black Rock Desert, ongoing. Daily 10 am-5:30 pm. Gift shop. 17th St. & Pennsylvania Ave. NW, 202.633.1000 Metro: Farragut West



Pilates ProWorks

The capital has earned a reputation as a town full of workaholics. But denizens here also take time to work out just as hard. Yes, you'll find yoga studios and standard gyms, but also the latest in full-body fitness regimes. In Alexandria, this light-filled studio has participants climbing aboard "FitFormer" machines, benches incorporating a weighted sliding platform designed to put the body through its paces. The result is an all-over burn that feels oh-so good. 1103 Queen St., Alexandria, Va., 703.575.8206, pilatesproworks.com

FITNESS CENTERS

THE BAR METHOD

"Targeted" body sculpting workout classes combine elements of dance conditioning and physical therapy with the pace of interval training. See website for class schedule. Drop-in class \$27. 750 9th St. NW, 202.347.7999 Metro: Gallery Pl-Chinatown

BIKER BARRE

High-energy spin and barre classes driven by upbeat music and instructors. All levels welcome. Single class \$25. 738 7th St. SE, 202.733.1009 Metro: Eastern Market

EQUINOX

High-end gym and spa chain. Tag line: "sustainable luxury" (think grass roof, cork flooring). No mani/pedis per LEED guidelines. Hours vary by location. 4905 Elm St., Bethesda, Md., 301.652.1078 Metro: Bethesda; 1170 22nd St. NW, 202.974.6600; 8065 Leesburg Pike, Vienna, Va., 703.790.6193

FLYWHEEL

Theater-style studio for stationary cycling on custom-made, high-tech bikes, plus "Torqboard" for performance monitoring. Drop-in class \$30 (includes shoes). Also FlyBarre body sculpting. 1927 Florida Ave. NW, 202.830.0755; 824 9th St. NW, 202.684.7208

JOY OF MOTION

Founded in 1976, a dance center that welcomes all levels and ages for a wide variety of classes, including ballet, jazz, modern, tap, hip hop and zumba. Drop-in class \$19. 1333 H St. NE, 202.399.6763; 5207 Wisconsin Ave. NW, second floor, 202.362.3042 Metro: Friendship Heights; 7315 Wisconsin Ave., Suite 180E, Bethesda, Md., 301.986.0016 Metro: Bethesda

PURE BARRE

Fifty-five minute sessions that use the ballet barre to perform small, isometric movements with the aim of creating long, lean physiques. Nine area locations (see all on the website). Drop-in class \$29. 407 8th St. SE, 202.847.3708 Metro: Eastern Market; 3308 Wisconsin Ave. NW, 202.244.7500; 2130 P St. NW, 202.870.1799 Metro: Dupont Circle (North)

SOULCYCLE

Indoor stationary cycling classes with a nightclub vibe (dim lighting, turned-up music). 45-, 60- and 90-minute sessions. Drop-in class \$30. 1935 14th St. NW, 202.332.7685; 601 Massachusetts Ave. NW, 202.293.7685; 1042 Wisconsin Ave. NW, 202.328.7685; 2301 M St. NW, 202.659.7685

SQUASH ON FIRE

The country's first pay-as-you-go squash facility, offering eight courts (two all-glass) for rentals, lessons and clinics. Pro shop, bar and restaurant. From \$10. 2233 M St. NW, 202.241.2233 Metro: Foggy Bottom

VIDA FITNESS

Hip local chain with classes, personal training, pool and spa. Six locations; see all on website. 601 F St. NW, 866.382.8431 Metro: Gallery Pl-Chinatown; 1517 15th St. NW, 202.588.5559 Metro: McPherson Sq; 999 9th St. NW, 202.742.1940 Metro: Gallery Pl-Chinatown

SALONS

BARBER OF HELL'S BOTTOM

Old-school barbershop in an industrial-style space made hip by tattooed stylists and barbers practicing straight-razor shaves (hot and cold towels, essential oils, face massage). Hair cuts, beard trimming, color and gray blending. M noon-5 pm, T-F 10 am-7 pm, Sa 9 am-6 pm 202.332.0200

COATROOM

Hip salon for manicures and pedicures (standard or "step up" with spa extras), nail art (fee). Gel, shellac, non-toxic polishes. Waxing services. M-Sa 9 am-8 pm, Su 10 am-

6 pm. 850 N. Randolph St., 703.717.5007 Metro: Ballston

DRYBAR

A "blow dry bar" (no cuts or color) offering \$45 blowouts in a chic white salon. Styles ranging from "Cosmo" (lots of loose curls) to "Manhattan" (sleek and shiny). Hours vary by location, but generally M-W 7 am-8 pm, Th-F 7 am-10 pm, Sa 8 am-10 pm, Su 9 am-7 pm. 1825 Wisconsin Ave. NW, 202.609.8644; 4840 Bethesda Ave., Bethesda, Md., 240.483.4277 Metro: Bethesda; 1635 Connecticut Ave. NW, 202.719.3809 Metro: Dupont Circle (North)

DUPONT NAILS & SPA

Multi-service spa with manicures, pedicures, massages, facials and waxing for women and men. Polishes like OPI, Gelish and Essie, plus organic brands for skin care. Hair: cut, style and color. M-Sa 9 am-6 pm, Su 10-6 pm. 1718 20th St. NW, 202.232.6473 Metro: Dupont Circle (North)

GROOMING LOUNGE

Upscale spot for men's shaving and haircare products with brands like Jack Black and Acqua di Parma, plus salon's own line. Services including hot lather shaves, nail treatments and facials. Hours vary by location. 1745 L St. NW, 202.466.8900 Metro: Farragut

North; Tysons Galleria, 1001 International Drive, McLean, Va., 703.288.0355

LUIGI PARASMO SALON

The first namesake salon from the Italian stylist. Hair color, extensions, treatments and cuts, plus products like Kerastase and Moroccan Oil. High-tech spa on second floor for massages, peels, masks and mani-pedis at cushy seats equipped with iPads. T 10 am-7 pm, W-F till 8 pm, Sa 9 am-7 pm. 1510 Wisconsin Ave. NW, 202.333.2244

VARNISH LANE

Well-appointed, environmentally conscious salon in a townhouse setting for waterless manicures and pedicures. Non-toxic brands like RGB, Smith & Cult, Lauren B, along with designer lines Chanel, YSL. Local natural products and some jewelry. T-F 10 am-7 pm, Sa 9 am-5 pm, Su 10 am-4 pm. 5236 44th St. NW, 202.506.5308 Metro: Friendship Heights

WISE OWL CLUB

In Adams Morgan, minimalist barbershop specializing in straight-razor shaves, beard maintenance and gray blending. Counter of men's apothecary goods and vintage finds by MUTINY. No appointments; walk-ins only. T-F 11 am-8 pm, Sa 9 am-6 pm. 2010 18th St. NW, 202.705.9425 Metro: Dupont Circle

SPAS

ARGENTTA SPA

Inside The Watergate Hotel, a luxurious retreat featuring the original 1960s-era indoor pool, plus a sauna, gym, steam room, nail salon and treatment areas for massages, scrubs and facials. Natural skin-care lines include Red Flower and Caudalie. M-Su 7 am-9 pm. 2650 Virginia Ave. NW, 202.838.5000. Metro: Foggy Bottom

AURA SPA

Housed in massive umbrella wellness center that includes Vida Fitness, a modern day spa offering body wraps, scrubs, facials, waxing and massages (warm stone, prenatal, aromatherapy). M-F 10 am-9 pm, Sa-Su 10 am-7 pm. 202.232.6620 Metro: U St.-Cardozo; 1517 15th St. NW, 202.588.5557; 445 K St. NW, 202.289.8432

BLISS

At the area's first W Hotel, a spa and retail boutique. Skin and nail care, massages and waxing plus customer faves like the "triple oxygen treatment" and ginger rub. Also luxurious lounges, a brownie buffet and R & B background music. Daily 9 am-9 pm. 515 15th St. NW, 877.862.5477 202.661.2418 Metro: Metro Center

CELADON

Luxury day spa offering hair, skin, nail, body and medspa treatments. Stone massage, coconut sugar scrub, seaweed body masque. Gift brands like Tocca, Agraria, Anthousa. M, W, F 8:30 am-6 pm, T, Th 8:30 am-7 pm, Sa 8:30 am-4:30 p.m. 1180 F St. NW, 202.347.3333 Metro: Metro Center

FOUNTAINS DAY SPA

Self-dubbed the "Home of Healers and Angels," a quiet and peaceful setting for massages (like the "Four Hands Massage"), facials and skincare services. Also waxing and reflexology. M-T 9 am-6 pm, W-F 9 am-6 pm, Su 11 am-6 pm. 422 S. Washington St., Alexandria, Va., 703.549.1990 Metro: King Street

GEORGETOWN SALON & SPA

From accomplished D.C. massage therapist Linda Hardiman, a serene spot for stress-reducing therapies including Swedish, deep-tissue massage and Myofascial release customized to individual needs. Also, hair cutting/styling, mani-pedis.

M-Sa 7 am-7 pm. 2715 M St. NW, 202.333.8099

NUSTA

Claim: the U.S.'s first LEED Gold-certified day spa. Massages like stone, couples, reflexology. Body scrubs, water therapies, facial treatments, nail care, waxing and bridal packages. M-F 10 am-8 pm, Sa 9 am-8 pm, Su 10 am-6 pm. 1129 20th St., NW, 202.530.5700 Metro: Dupont Circle (South)

THE RED DOOR BY ELIZABETH ARDEN

Express facials, massage, aqua and aromatherapy, makeup services. Hours vary by location. Willard InterContinental Hotel, 1401 Pennsylvania Ave. NW, 202.942.2700 Metro: Metro Center; 5225 Wisconsin Ave. NW, 202.362.9890 Metro: Friendship Heights

THE RITZ-CARLTON SPA, GEORGETOWN

A newly remodeled luxury oasis offering facials, massage therapy, hair removal/tinting and maternity treatments using ESPA products. Two couples rooms, plus steam room, sauna and fitness center. M-F 11 am-7 pm, Sa-Su 9 am-7 pm. 3100 South St. NW, 202.912.4175 Metro: Foggy Bottom

SOOTHE

On-demand service for massages (Swedish, deep tissue, couples) in 60-, 90- and 120-minute increments ordered via cellphone app, website or phone. Daily 8 am-midnight. 800.960.7668

THE SPA AND SALON AT MGM NATIONAL HARBOR

Inside the luxury resort, 27,000-sq.-foot glam spa on two levels with salon and barber shop. Eleven treatment rooms (hydro therapy, Vichy) using Clarins products, plus mani/pedis, couples treatment room, lounge. Daily 9 am-9 pm. 101 MGM National Ave., Oxon Hill, Md., 301.971.6115

THE SPA AT THE JEFFERSON

Massages, facials and treatments that use herbs and botanicals grown in Monticello's gardens plus vinotherapy that reflect Thomas Jefferson's passion for wine. Daily 9 am-8 pm. 1200 16th St. NW, 202.448.3270 Metro: Farragut North

SPA AT THE MANDARIN ORIENTAL

Silk-draped walls, hot and cold plunge pools and minimalist Asian decor. Ayurvedic massages, sesame body scrubs, facials. Daily 9 am-9 pm. 1330 Maryland Ave. SW, 202.787.6100

YOGA & MEDITATION

RECHARJ

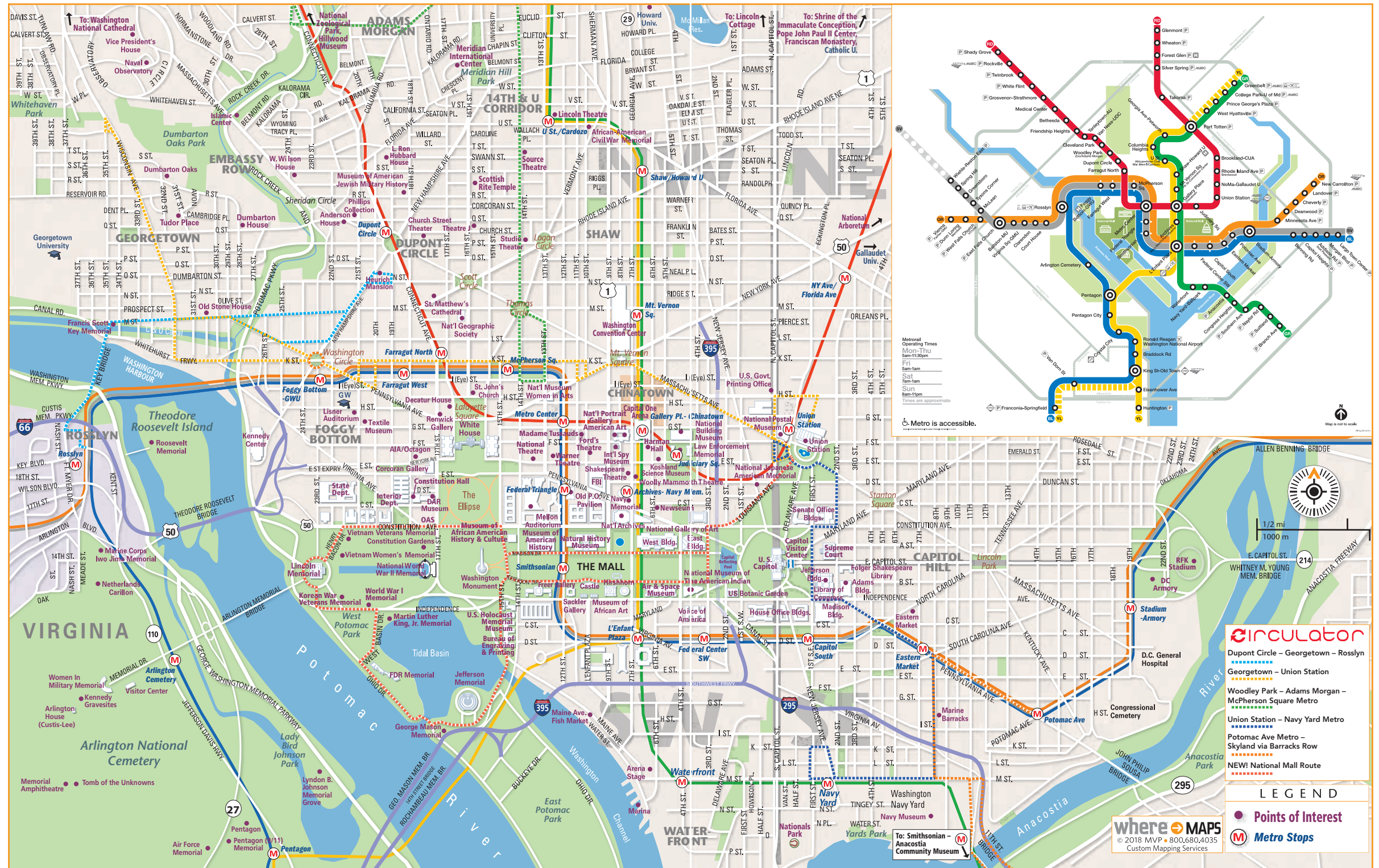
Modern space for meditation (guided, self) and power napping. Drop-in and membership-based classes ranging from 35 to 45 minutes, plus an hour-long "sound immersion" session. One-on-ones available. Drop-in meditation \$18, power nap \$9. 1445 New York Ave. NW #130, 202.347.4595 McPherson Sq; 6430 Rockledge Drive, Studio Suite 400, Bethesda, Md., 301.881.9464

TAKE FIVE MEDITATION


D.C.'s first meditation-only studio, offering drop-in and membership-based classes that range from 30 to 45 minutes (Breathe Now, Meditation for Athletes, Unplug), plus a 75-minute Mindfulness Games session. Drop-in class \$20-\$30. 1803 Connecticut Ave. NW, 2nd floor, 202.588.5198. Metro: Dupont Circle (North)

YOGA DISTRICT


An eco-friendly, community-run nonprofit with seven studios (see all on the website) and a wide selection of classes, from flow and restorative to Ashtanga and yoga-lates. Drop-in class \$11.35, mat rental \$2. 1635 Connecticut Ave. NW, Metro: Dupont Circle (North); 1910 14th St. NW; 2201 Wisconsin Ave. NW



Where do you want to go?



Find the best of the city





wheretraveler.com



ROLEX

THE DATEJUST 41

The new generation of the essential classic, with a new movement and design that keep it at the forefront of watchmaking. It doesn't just tell time. It tells history.



OYSTER PERPETUAL DATEJUST 41

LILJENQUIST & BECKSTEAD

Tysons Galleria	Fairfax Square	Westfield Montgomery
McLean, Virginia	Vienna, VA	Bethesda, Maryland
(703) 448-6731	(703) 749-1200	(301) 469-7575

LENKERSDORFER
JEWELERS

TYSONS CORNER CENTER MCLEAN, VIRGINIA (703) 506-6712

ROLEX • OYSTER PERPETUAL AND DATEJUST ARE ® TRADEMARKS.